



Countywide Community Wildfire Protection Plan (CCWPP)

Santa Monica Mountains Forecast Zone
Action Plan Workshop

August 20, 2025

Before we begin

We will be talking about and showing images related to wildfire in our communities.

We recognize the severe impacts that wildfire has had on individual members of our communities.

Agenda

1. Introduction
2. Countywide CWPP
3. Action Plan Development
4. Next Steps
5. Q&A



Use the Zoom Chat Box for immediate questions



Or use the "Reactions" tab to raise your hand

Interactive Poll - Instructions



CCWPP Project Partners

Project Lead:

- Los Angeles County Planning

Supporting Agency:

- Los Angeles County Fire

Partner Agencies:

- NPS, State Parks, Forest Service
- MRCA, SMMC, RMC, RCD

Partner Fire Organizations:

- Fire Safe Councils
- Fire Wise Communities
- CERTs

Partner Communities:

- Town Councils
- Community Organizations

What organization and community are you affiliated with?

Agoura Hills FSC

MRCA, topanga canyon

SMMFSC

Topanga Canyon Fire
Safe Council

Neighborhood network
coordinator under TCEP
in Topanga

Topanga Resident.
Topanga Canyon, CA

LA County Supervisor
Lindsey Horvath's office

Topanga Coalition For
Emergency
Preparedness - Topanga

What organization and community are you affiliated with?

Emergency
Preparedness in
Calabasas a Fire Safe
Council

The Acton Town Council. I
was unable to attend the
"High Country" meeting so I
am attending this one.

Calabasas Resident
CNPS LA-SMM chapter

Topanga Fire Safe
Council, Topanga

Entrada Encina
Association Entrance to
the Oaks Project

Topanga Town Council
Topanga Association for a
Scenic Community
Topanga Chamber Las
Virgines Home Owners Fed

Topanga volunteer fire
and forestry

Concerned
environmentalist

What organization and community are you affiliated with?

Firewise Regional
Coordinator

I live in Corral Canyon. We have
a Fire Safe Alliance Council. We
are also in the process of
building our own Fire Station to
house our Fire Engine Our Call
Firemen will man our station

Corral Canyon Fire
Safety Alliance

COUNTYWIDE CWPP

What is a CWPP

Healthy Forest Restoration Act (2003)

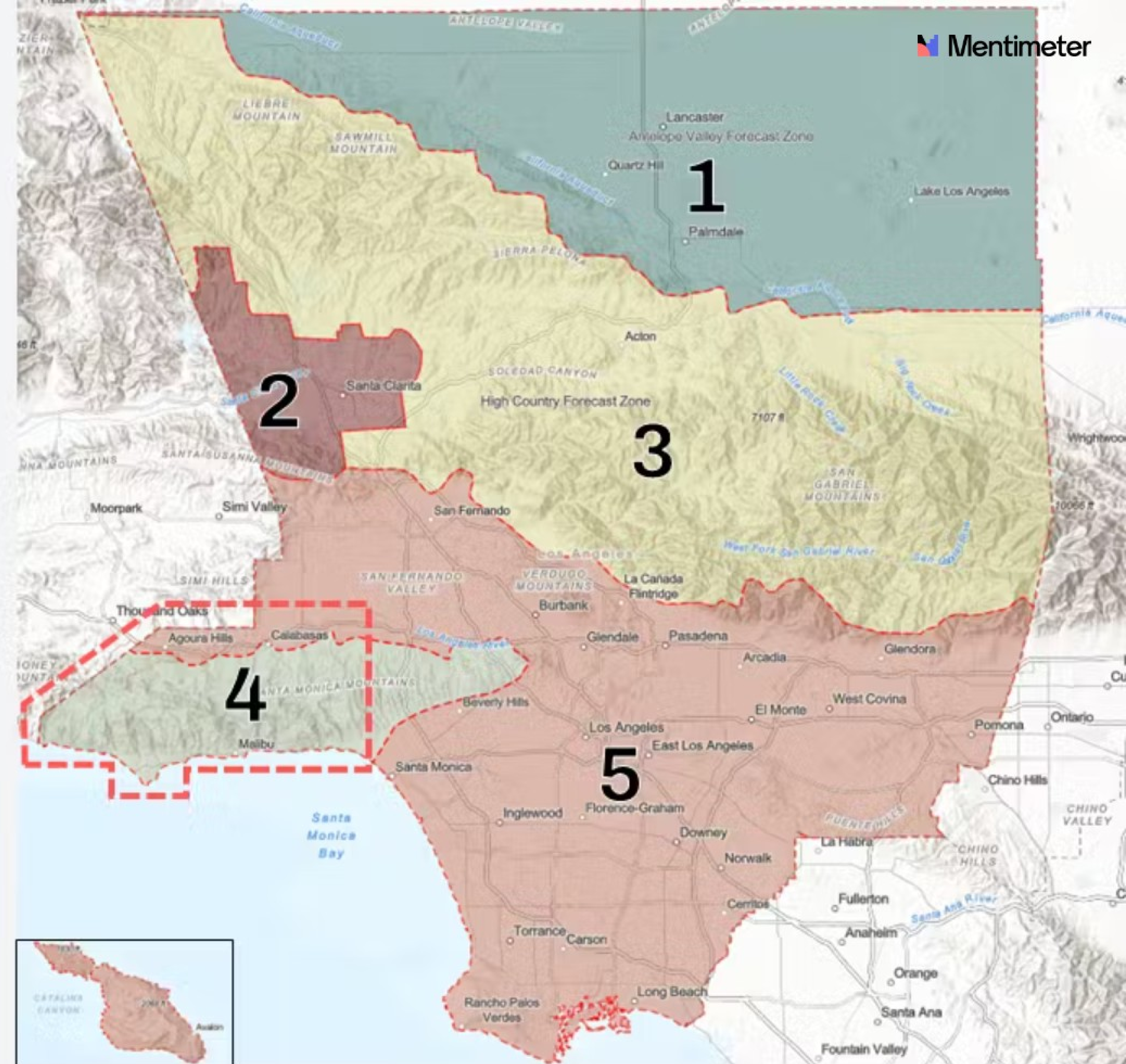
- ✓ A community-driven, collaborative plan
- ✓ Identifies and prioritizes areas for vegetation management
- ✓ Recommends measures for reducing structural ignitability
- ★ **Action Plan** – Projects eligible for grant funding and implementation



CCWPP Organization

Forecast Zones:

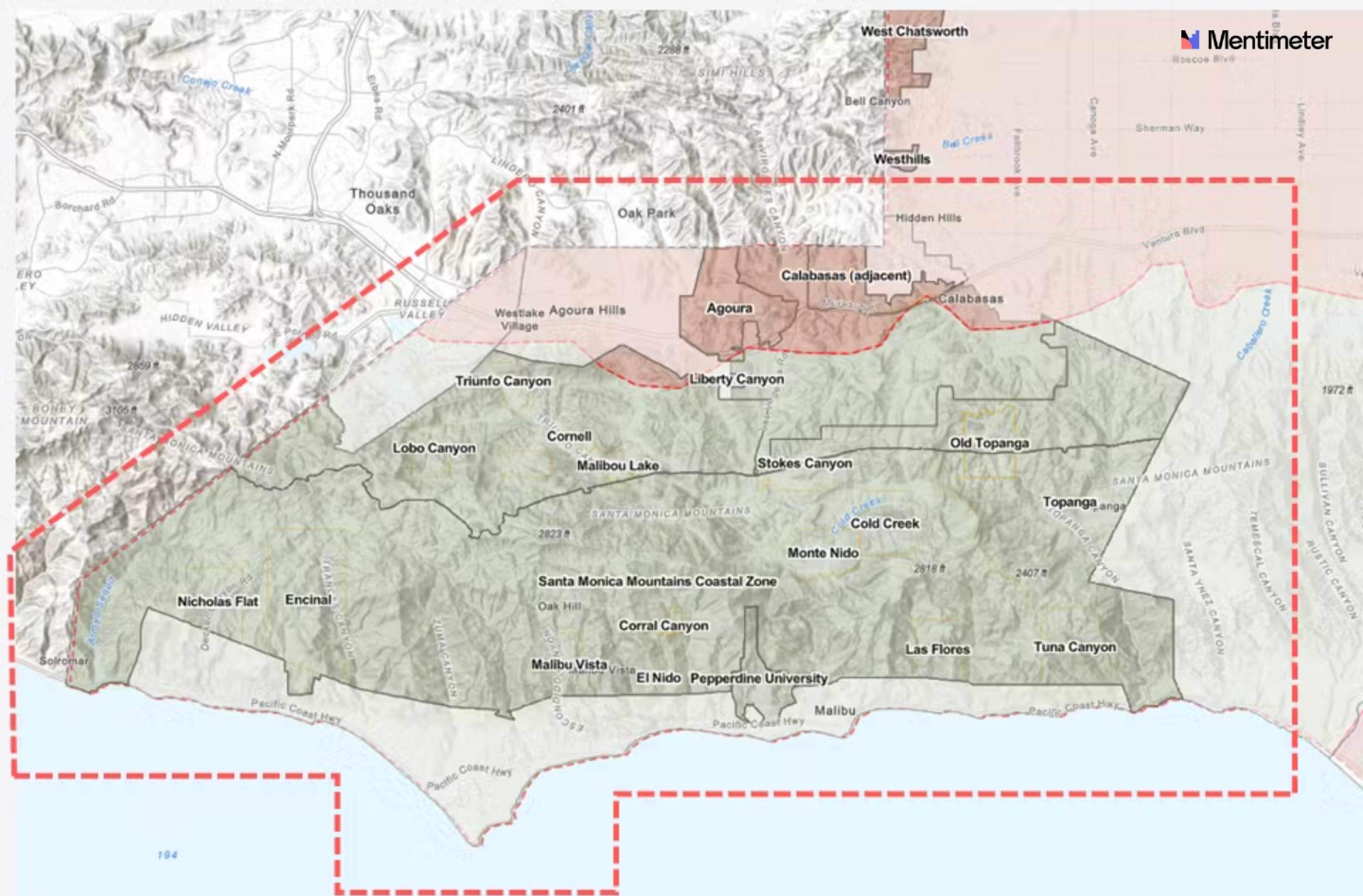
1. Antelope Valley
2. Santa Clarita Valley
3. High Country
4. Santa Monica Mountains
5. Los Angeles Basin



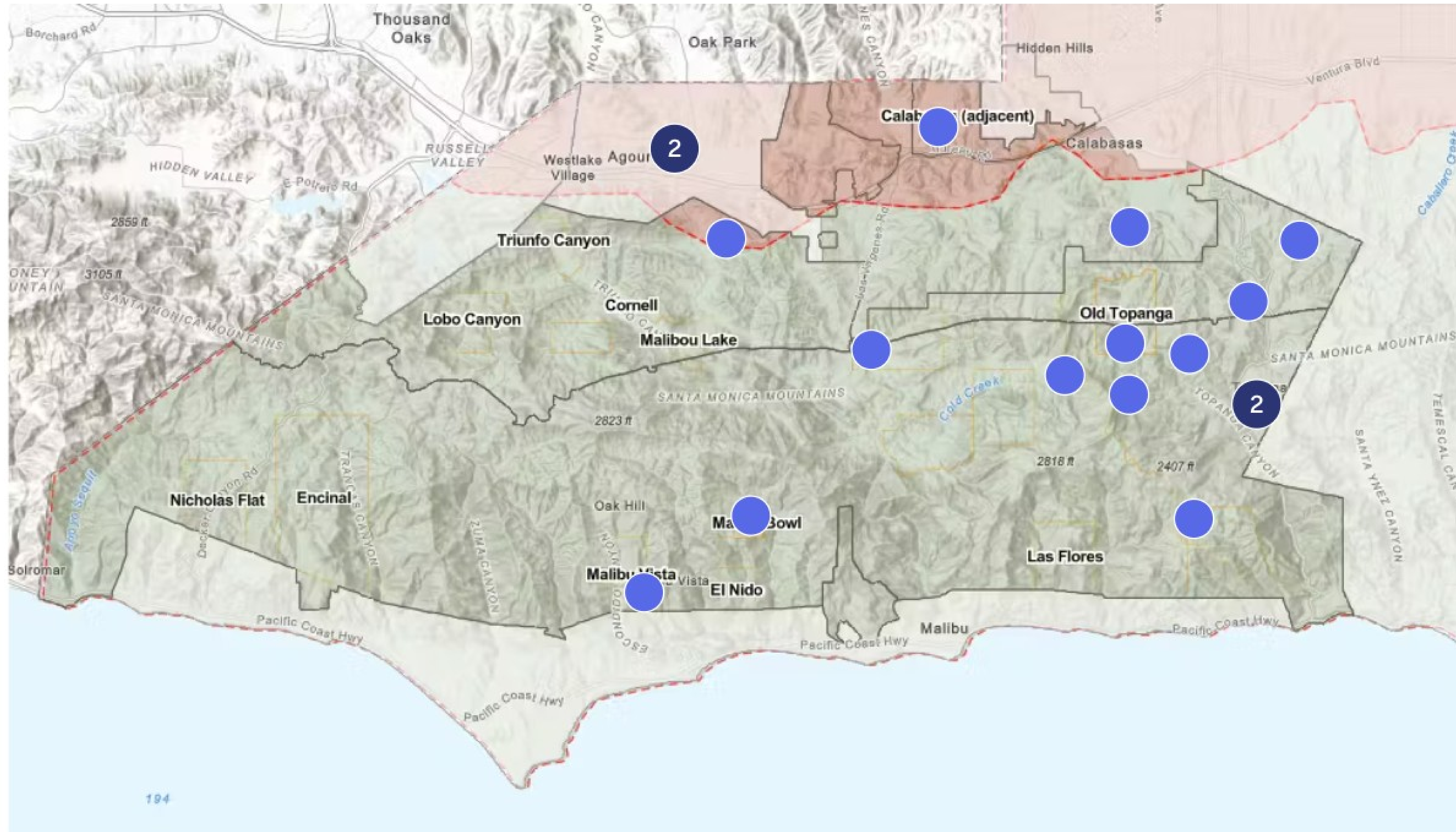
Focus Region

Forecast Zone:

- Santa Monica Mountains

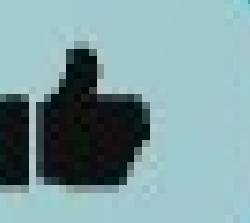
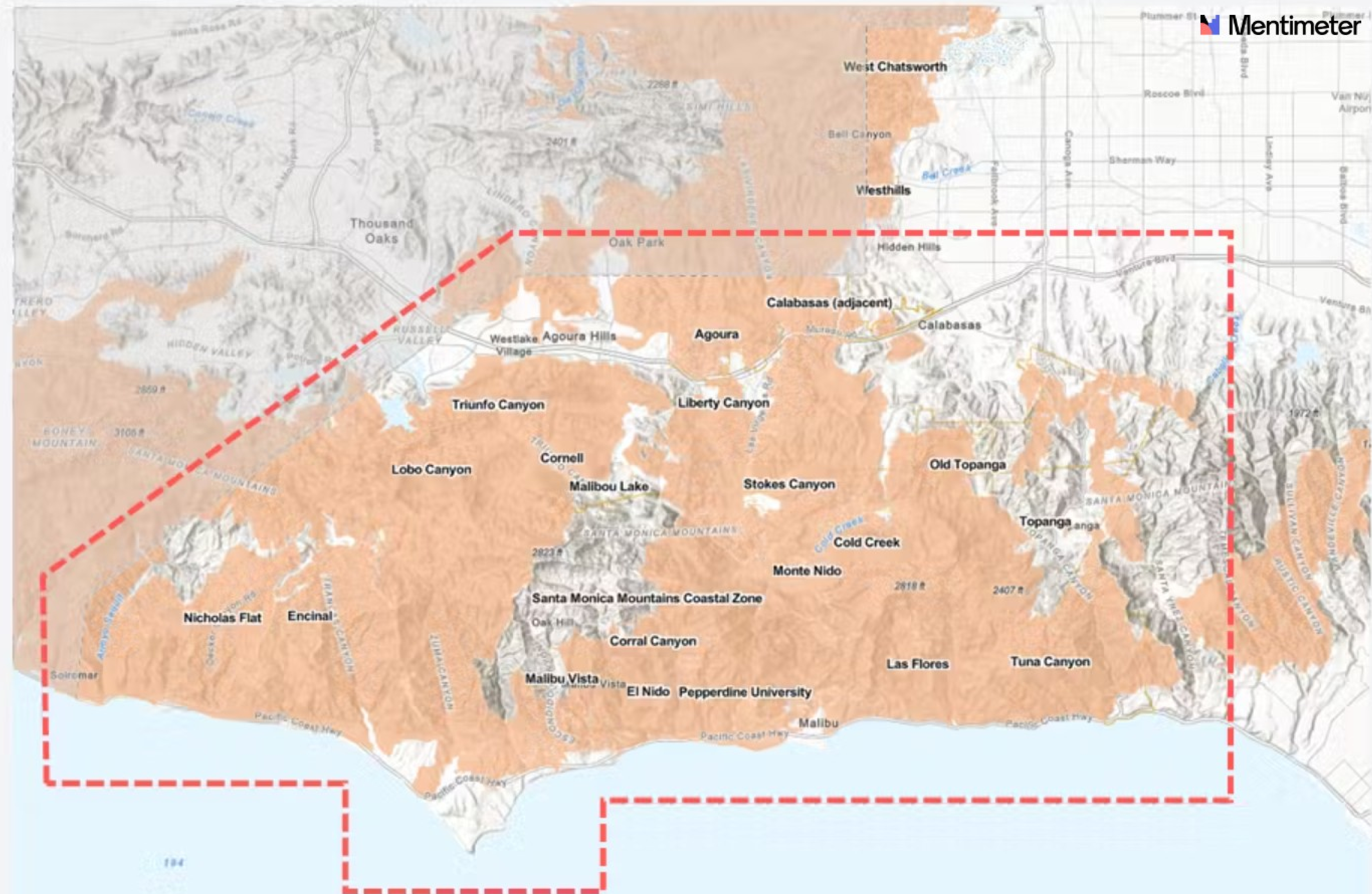


Place a pin where your community is located.



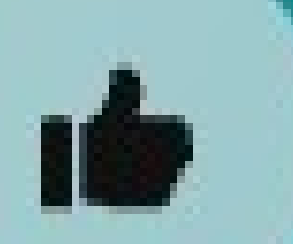
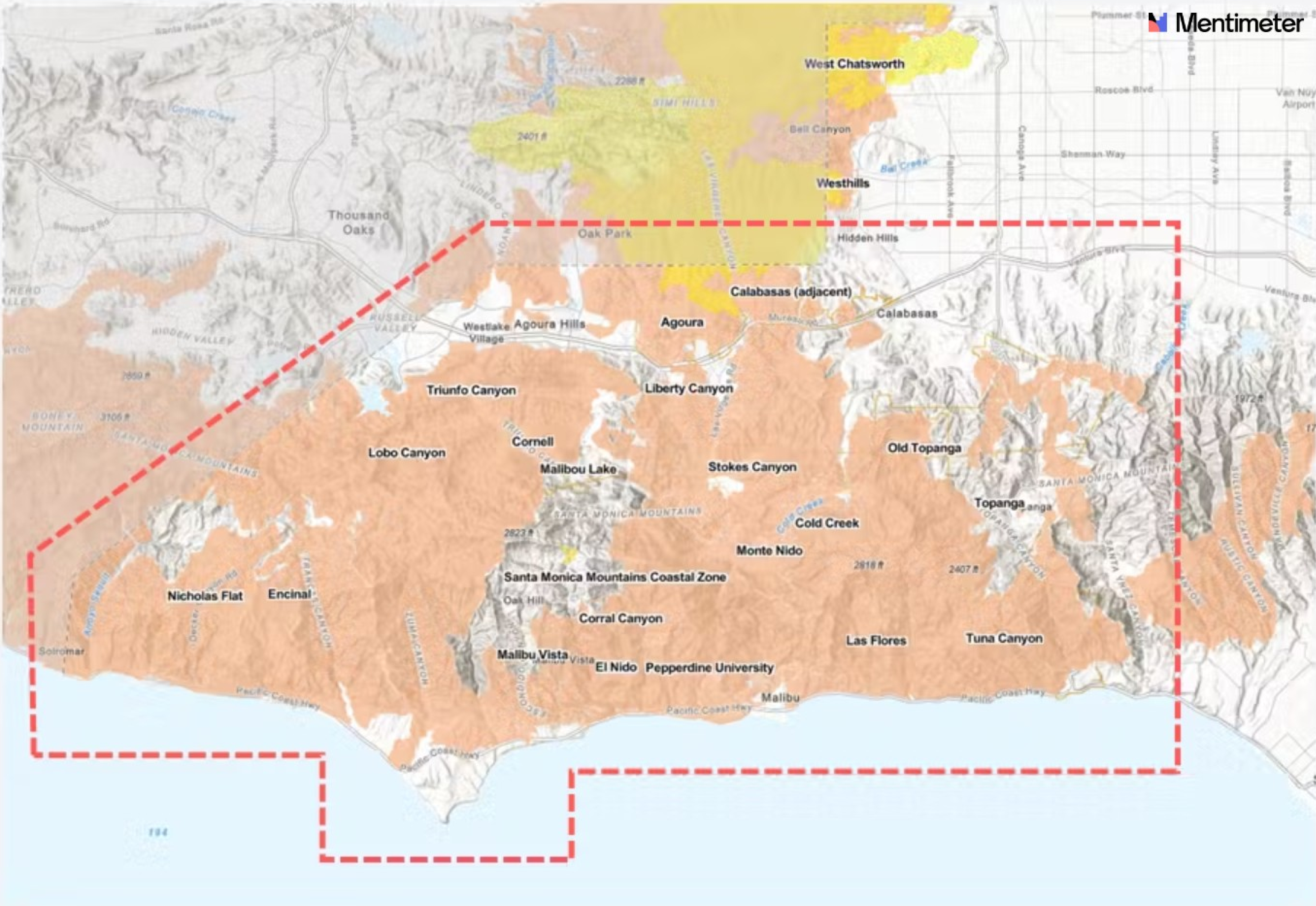
Fire History

1900-2000

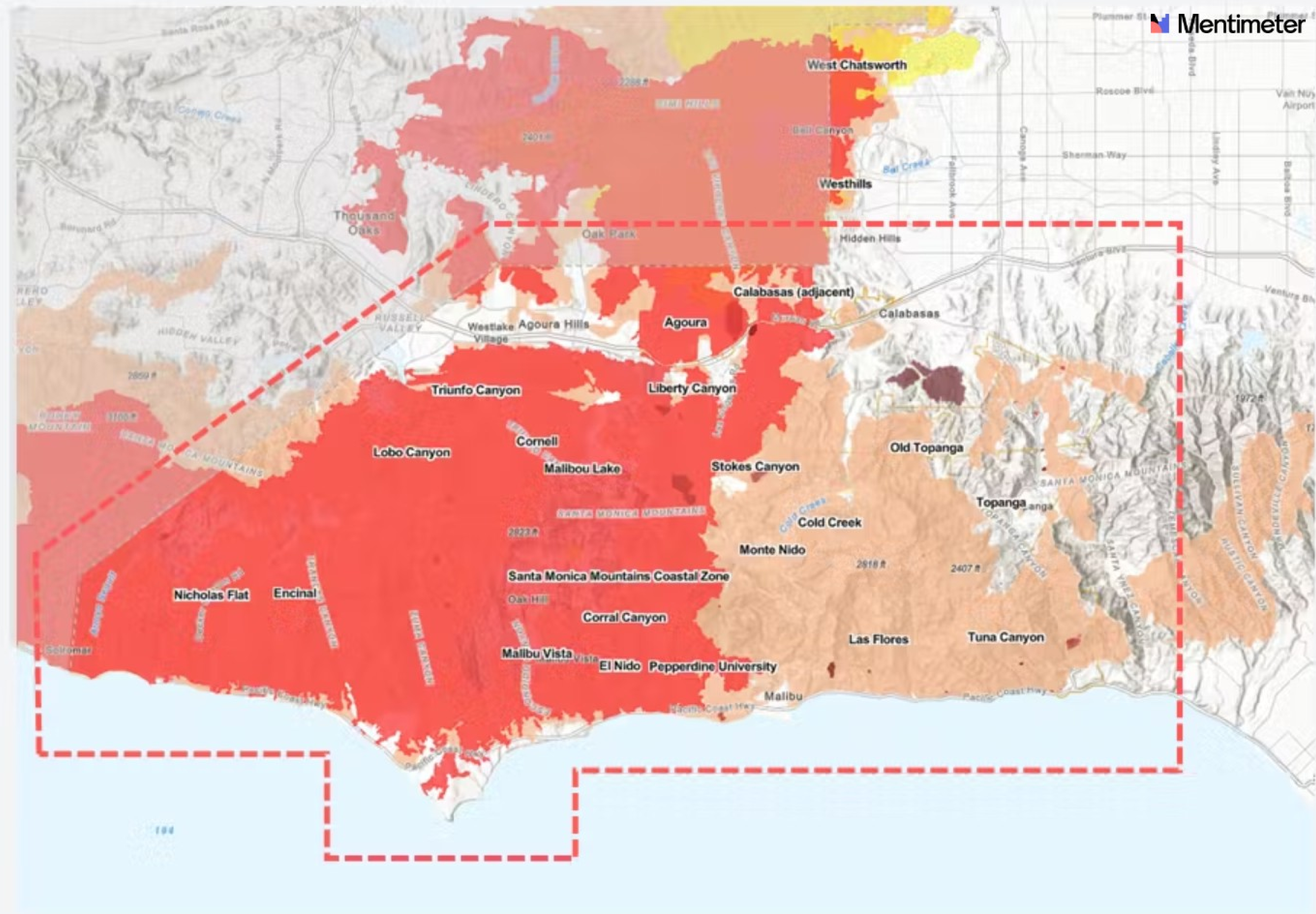


Fire History

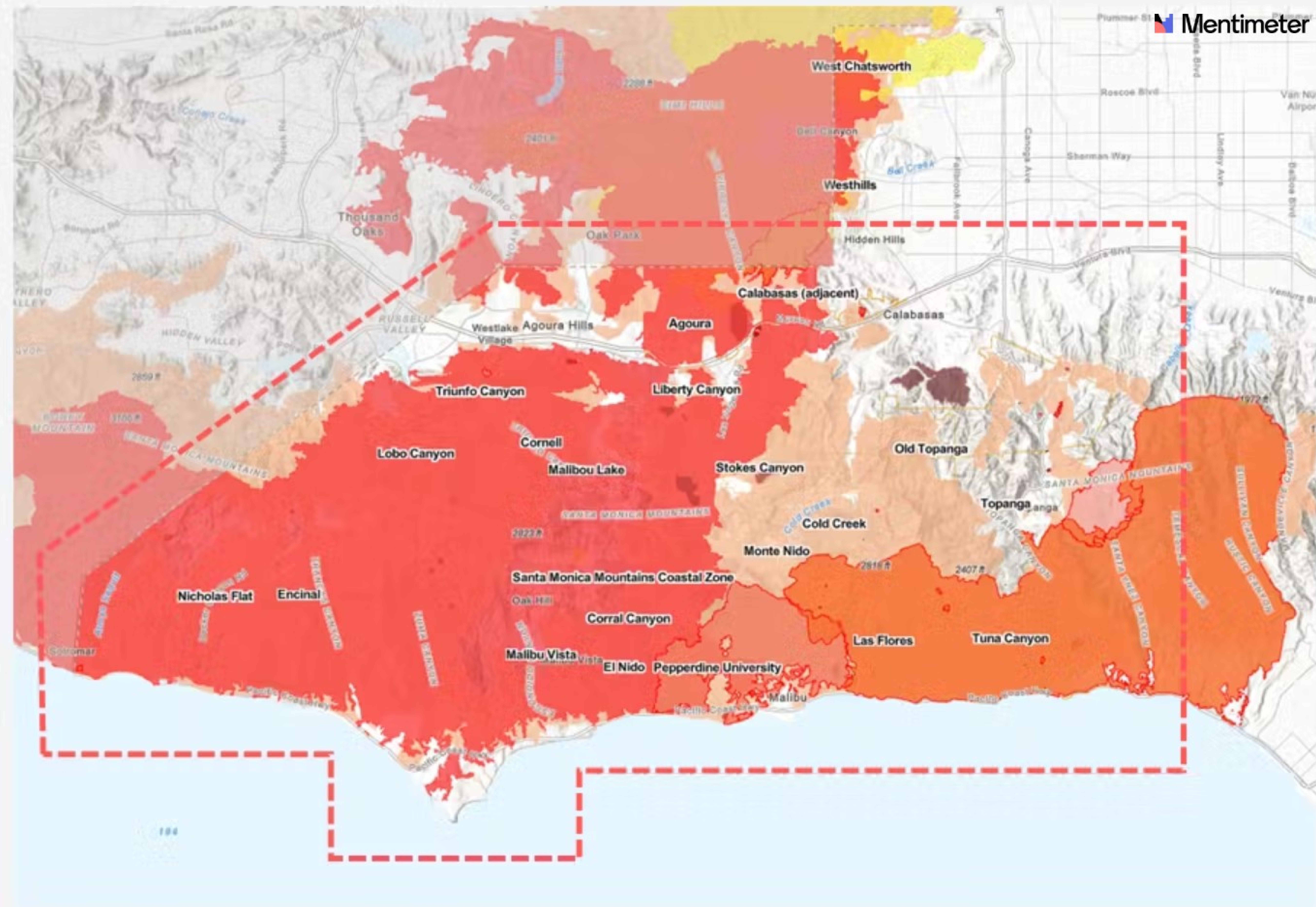
- 1900-2000
- 2001-2010



Fire History



Fire History



LET'S PLAN FOR ACTION

ACTION PLAN

Our Task

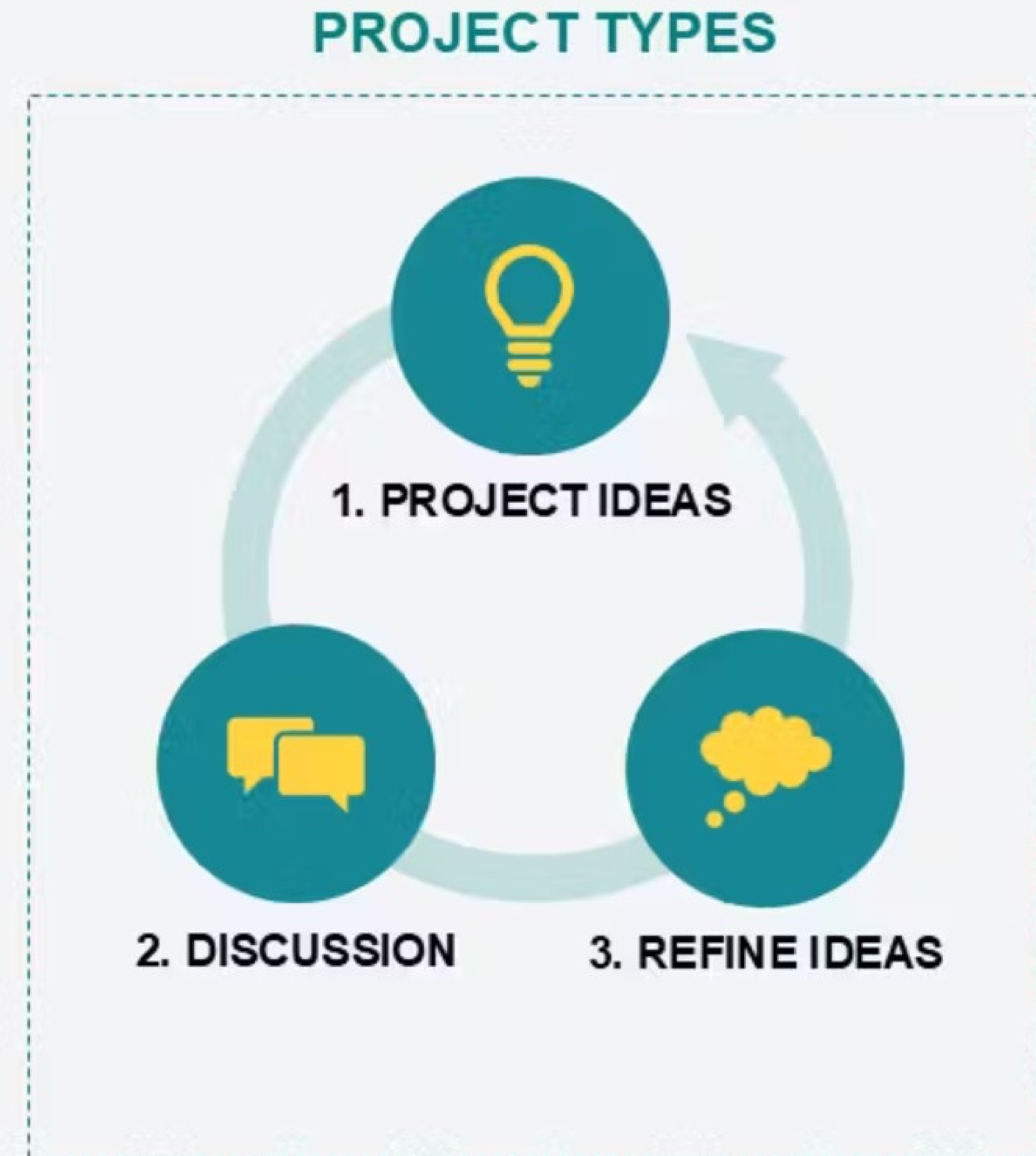
- Propose ideas for fire mitigation in your community
- Provide initial priorities for fire mitigation
- Create a base for later prioritization by public

➡ **Project grant eligibility**

★ **Set 10-year vision for project implementation**

Countywide Community Wildfire Protection Plan (CCWPP)	
<u>Partnerships</u> County collaboration with community safety organizations and governance groups	1
<u>Project Planning</u> Communities identify priority hazard reduction areas & projects for CCWPP Action List.	2
<u>Funding</u> Projects included on CCWPP Action List eligible for grant funding.	3
<u>Implementation</u> Community and agency partners implement CCWPP projects.	★

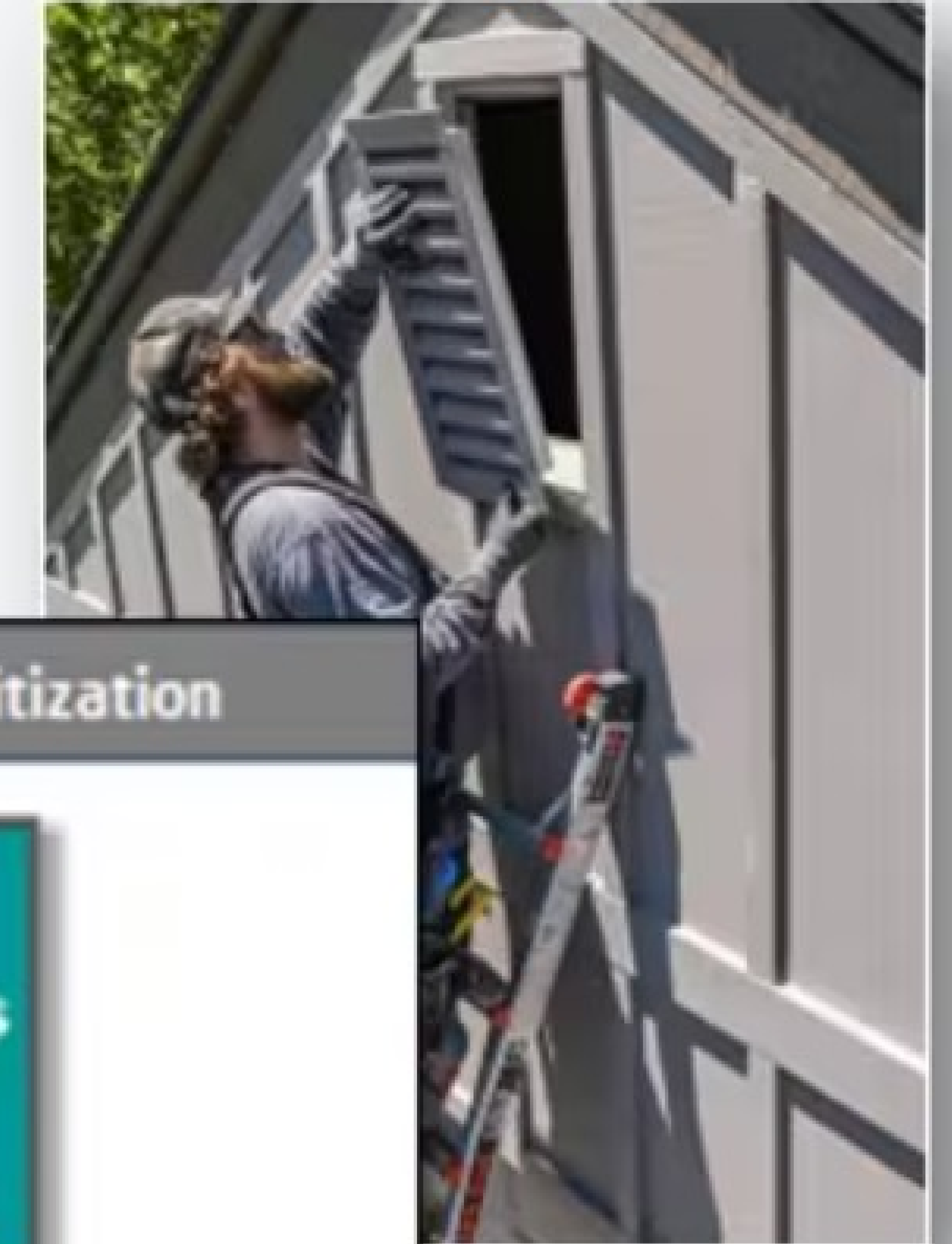
WORKSHOP STRUCTURE



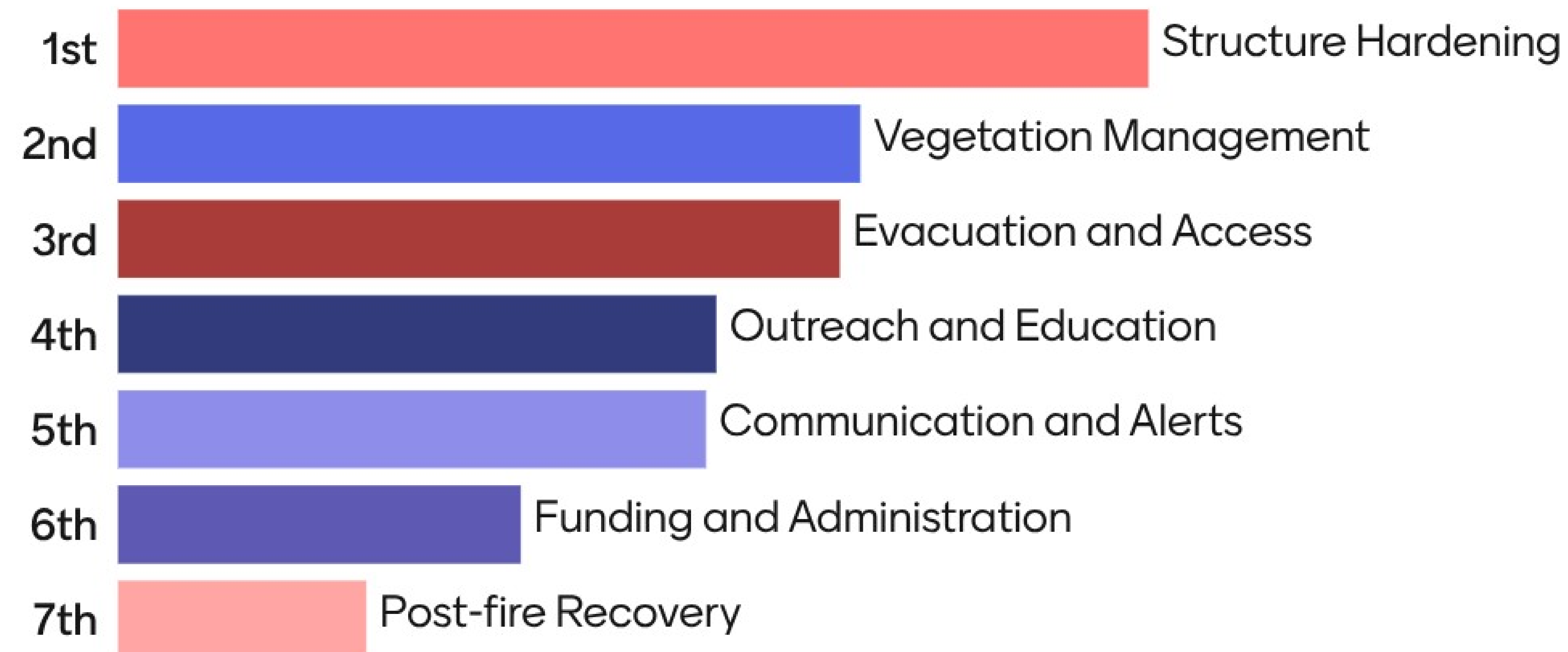
ACTION PLAN

Project Types

- Vegetation management
- Structure hardening
- Outreach and education
- Communications and alerts
- Evacuation and access
- Post fire recovery
- Funding and administration



What should we focus on for community wildfire mitigation?



FOCUS AREAS - Instructions:

- Rank project types to focus on
- Take group's top 2-3 ranked:

➡ Develop ideas for project types

What vegetation management projects do you want to see in your area? Where?

Vegetation Management Ideas

Priority Projects

- Maintenance along roadway...
- Maintenance in open space managed by...

SAMPLE: Hazardous fuels reduction along highway 89 south of Johnsonville.

SAMPLE: Arrundo and beetle kill tree removal by Fish Creek Trailhead

Community chipping and hauling

Education. Ties into zone 0 education. Oaks can act as ember buffers. I drive up old Topanga and see Italian cypress lined up driveways, we need to educate folks on what plants are super flammable

g...

- Green belt designations along...

For those of us who live next to parkland—we need help with vegetation management.

State Park land that borders our neighborhoods needs a balanced vegetation management plan now.

After weed abatement or a fire, hydroseed the scar with the right mixture of fire resistant, low to ground seeds

See click fix style system to flag or report problems

ig...

- Along _____ Foothills
- On _____ managed lands (NPS, USFS, ...)

What vegetation management projects do you want to see in your area? Where?

Vegetation Management Ideas

Priority Projects

- Maintenance along roadway...
- Maintenance in open space managed by...

Oak ember buffers

- Green belt designations along...

Rototiller wider swaths, and around neighborhoods. Our roads are choked with weeds making evac dangerous

- Along _____ Foothills
- On _____ managed lands (NPS, USFS, ...)

Habitat restoration for defensible space in open space adjacent to structures ie: state parks land

Remove and properly dispose of trees infested gold spotted oak borer and invasive shothole borers

We NEED a volunteers corp for seniors and/or low income residents to ensure they can perform their annual brush clearance requirements. Right now, far too many cannot and do not adequately clear brush

On this topic we MUST be very careful and not go overboard. We need experienced Folks to be guiding all of us

Invasive plant species removal

Open space vegetation management

What vegetation management projects do you want to see in your area? Where?

Vegetation Management Ideas

Priority Projects

- Maintenance along roadway...
- Maintenance in open space managed by...

Would LOVE to see publicity around projects, in local newspapers etc. Caught doing good...

Documenting oak and green buffers to use for future studies

1x-2x Year Community Chipping / Vegetation Curbside Pick Up / Hauling For Brush Clearance Deadline Compliance

GSOB education before potentially spreading into the smm. They pose a huge fire risk. Need to increase education on ID-ing

g...

- Green belt designations along...

Planting of more native species that promote mitigation and education. Swap non native highly flammable for native species.

Zone zero support

Vegetation management is a balance. How do we keep the beauty but minimize the risk?

Open space maintenance

ig...

- Along _____ Foothills
- On _____ managed lands (NPS, USFS, ...)

What vegetation management projects do you want to see in your area? Where?

Vegetation Management Ideas

Priority Projects

- Maintenance along roadway...
- Maintenance in open space managed by...

GSOB monitoring

- Green belt designations along...

Be careful to properly dispose of infested green waste (firewood and green waste can spread invasive non-native tree pests)

- Along _____ Foothills
- On _____ managed lands (NPS, USFS, ...)

Assessments and grants to help with zone 0 clearance and thinning or removal of fire prone trees, overgrown or crowded

No new fuel breaks far from communities. Our roads and current fuel breaks are enough.

Manual Brush work is the way to go . There have been some bad examples

Limit human activity in HVSZ

Community Workdays

We desperately need a way/place to dispose of the debris resulting from proper brush clearance. Waste disposal companies will haul only a very limited amount of green waste. Leaf blowers not effective

What vegetation management projects do you want to see in your area? Where?

Vegetation Management Ideas

Priority Projects

- Maintenance along roadway...
- Maintenance in open space managed by...

Firewise Community Workday — teach neighbors how to create an ember resistant zone zero and how to install 1/16" vent screens

Edelman Park - MRCA - veg management and restoration.

MRCA parcels in topanga zone 1 4434-003-900 4434-037-901

CalFire did a very bad job in Old Topanga stripped the land bare

Preservation of chaparral and coastal sage scrub. Get rid of invasives . Remove invasives around roads.

Human activity is the number one cause of fire, keep encampments out of the brush

Foster community days where neighbors work together to harden their homes and reduce hazardous vegetation in zone zero

Tree injections can fortify trees from pests

- Along _____ Foothills
- On _____ managed lands (NPS, USFS, ...)

What vegetation management projects do you want to see in your area? Where?

It would be great to have more clarity / transparency from agencies like MRCA where and whether or not veg. management is planned / will be happening or not so we can plan and organize as a community

Pruning and plant care workshops

Community work days!

Vegetation Management Ideas

Priority Projects

- Maintenance along roadway...
- Maintenance in open space managed by...
- Maintenance on vacant lots in...
- Community chipping, hauling at...
- Pest infestation monitoring in...
- Invasive species removal at...
- Planting oak tree ember screens along...
- Green belt designations along...
- Fire break installation/expansion along...

Priority Areas

- Along road or highway _____
- In _____ Canyon
- At _____ Trailhead
- On _____ Ridge
- Along _____ Foothills
- On _____ managed lands (NPS, USFS, ...)

What kind of structure hardening or help do you need?

Structure Hardening Ideas

Priority Projects

- Home hardening assessments for...

- Vent cover installation

A lot of homes in Topanga are older/made of wood. Can you provide recommendations on fire resistant coatings, wood filler and help promote tents practices, in addition to the vents zone 0 etc

- Garage - Battery backup for door

Rebate or grant program for residents to retrofit vent screens

- For vulnerable groups such as _____
- For old houses in _____
- For highest fire hazard areas in _____

SAMPLE: Need home hardening assessments and vent installation for Hillvale neighborhood, which has old wood shingle homes.

Zone zero CLARITY and education

Zone zero clarity

Home Hardning like what Ryan continues to do in the SSM

Vent retrofit installers and certifications

Help w new windows and glass doors

What kind of structure hardening or help do you need?

Structure Hardening Ideas

Priority Projects

- Home hardening assessments for...

- Vent cover installation

Will need major help with zone 0 compliance

- Garage - battery backup for door

Zone zero clarity - understanding of what species are recommended as part of hardening or mitigation.

- For vulnerable groups such as _____
- For old houses in _____
- For highest fire hazard areas in _____

It has to start with assessments

Replace gutters

HIZ assessments

Easy and affordable wins. It doesn't have to cost \$20k...

Home Hardening Assessments & Recommendations

home hardening assessments including recommendations on landscaping changes to better protect structures. Vent covers and screens would be part of that program

What kind of structure hardening or help do you need?

Structure Hardening Ideas

Priority Projects

- Home hardening assessments for...

- Vent cover installation

Focus on home older than 2010 and those which are within 10 ft of another structure

- Garage - battery backup for door

Overgrown vegetation around homes. Wood fencing against homes. Availability of different water storage for when the water runs out. How to get neighbors to participate

- For vulnerable groups such as _____
- For old houses in _____
- For highest fire hazard areas in _____

Ember entry point protection. Vents, garage doors, around decks.

dual pane window-grants should be made available

Can county promote / centralize the different home assessment providers?

People trained in home hardening implementation and funding

Home hardening is an individual responsibility. People have been offered free assessments, they don't take advantage or do the work. What we need are Underground electric utilities, Water tanks

Home hardening assessments Vent cover installation Fencing replacement

What kind of structure hardening or help do you need?

Structure Hardening Ideas

Priority Projects

- Home hardening assessments for...

- Vent cover installation

Assistance for home hardening, once a home has been evaluated. Vent replacement, gutter guards, Zone Zero vegetation management. Grants should be for materials and labor

- Garage - battery backup for door

the most cost-effective would be narrower vent grids & gutter guards. For a new roof or siding, that cost would likely have to be borne by the homeowner. Perhaps a grant could be sought to offset cost

- For vulnerable groups such as _____

- For old houses in _____

- For highest fire hazard areas in _____

Zone 0

Water tanks for neighborhoods

Grants for hardening:)

Cost share program for replacing fencing in zone zero

Trained evaluators

Vent cover installation; chimney screens + flashing; water tank installation; backup batteries -- especially for communication during power blackouts Corral Canyon

What kind of structure hardening or help do you need?

Need more contractors for home hardening

Expedited Permitting Process thru Regional Planning for Structural Hardening.

Grants for home hardening

Structure Hardening Ideas

Priority Projects

- Home hardening assessments for...
- Vent cover installation

Support program for elderly/ people on fixed income

- Garage – Battery backup for door
- Chimney – Screens & flashing
- Fencing – Replace flammable materials
- Water tank – Purchase/installation
- Zone 0 and defensible space assistance

Priority Areas

- For the community of _____
- For vulnerable groups such as _____
- For old houses in _____
- For highest fire hazard areas in _____

What kind of outreach and education is needed?

SAMPLE: The Grassview community needs a handbook and emergency communications info for new residents and people staying in Airbnbs.

Outreach and Education Ideas

- Structure hardening handbook
- Community What-to-Know handbook
- Defensible space information
- Vegetation care and maintenance info
- Evacuation planning and prep info
- CERT/Emergency Group coordination
- Insurance tips and guidance
- Post-fire recovery handbook
- School educational programming
- Volunteer opportunities
- Ads in local media

What kind of communication and alert improvements are needed?

SAMPLE: We need NOAA radios, particularly for elderly residents here in Hollyvine.

Community and Alerts Ideas

- Signage during red flag days in...
- Permanent signage at popular areas in...
- Local radio / walkie-talkie systems for...
- Backup power for cell towers in...
- Identify cell 'dead-zones' in...
- Local air-raid sirens in...
- Local media ads and alerts in...
- Dedicated informational website

Priority Areas

- In the community of _____
- In vulnerable areas such as _____
- In high-traffic areas such as _____
- In highest fire hazard areas in _____
- In _____ Canyon
- Along road _____

What kind of evacuation and access improvements are needed?

SAMPLE: We need shoulder widening along San Antonio Rd. and a traffic light study at the intersection of Los Prietos Rd.

Evacuation and Access Ideas

- Identify single access routes & areas in...
- Post permanent route signage along...
- Red-flag parking restrictions at...
- Roadway improvements along...
- Evac. training in schools, care facilities...
- Coordination for large animal evac. in...

Priority Areas

- In the community of _____
- For vulnerable areas such as _____
- For high-traffic areas such as _____
- For highest fire hazard areas in _____

What does your community need for post-fire recovery?

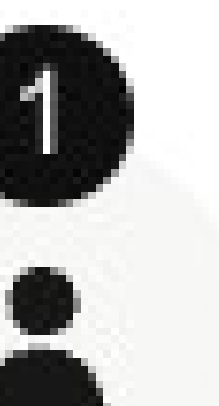
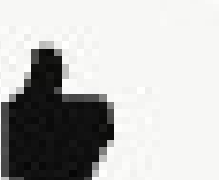
SAMPLE: The town of Blue Springs needs a plan for which trees should be protected and which can be removed after a fire.

Post-Fire Recovery Ideas

- Rebuild guidance and coordination
- Insurance guidance
- Soil testing coordination & resources
- Community rebuild priority planning
- Infrastructure planning **for/such as...**
- Business support planning **for/such as...**
- Housing assistance programs
- Tree removal & protection planning

Priority Areas

- For the community of _____
- For vulnerable groups such as _____
- Such as public transportation along _____
- Such as undergrounding along _____
- Such as _____ for downtown district
- Such as _____ for community businesses



What funding and admin help does your community need?

SAMPLE: The town of Sheridan doesn't have a 501c(3) with capacity to manage grants. We need both a financial sponsor and implementation partner.

Funding and Administration Ideas

- Grant application assistance for org...
- Grant management support for org...
- Get non-profit / 501c(3) status for org...
- Fiscal sponsorships for org...
- Implementation partnerships for org...
- Resource support (meeting space, etc.)

Priority Areas

- For the community of _____
- For _____ fire organization in _____
- For _____ emergency group in _____
- For _____ non-profit in _____
- For the _____ Tribe in _____

Action Plan - Surveys

- ➔ **Community Wildfire Survey**
- ➔ **Household Survey**
 - Provide more projects, details, ideas and concerns
 - Inform CCWPP and Action Plan
 - *Personal information will not be collected or shared.*



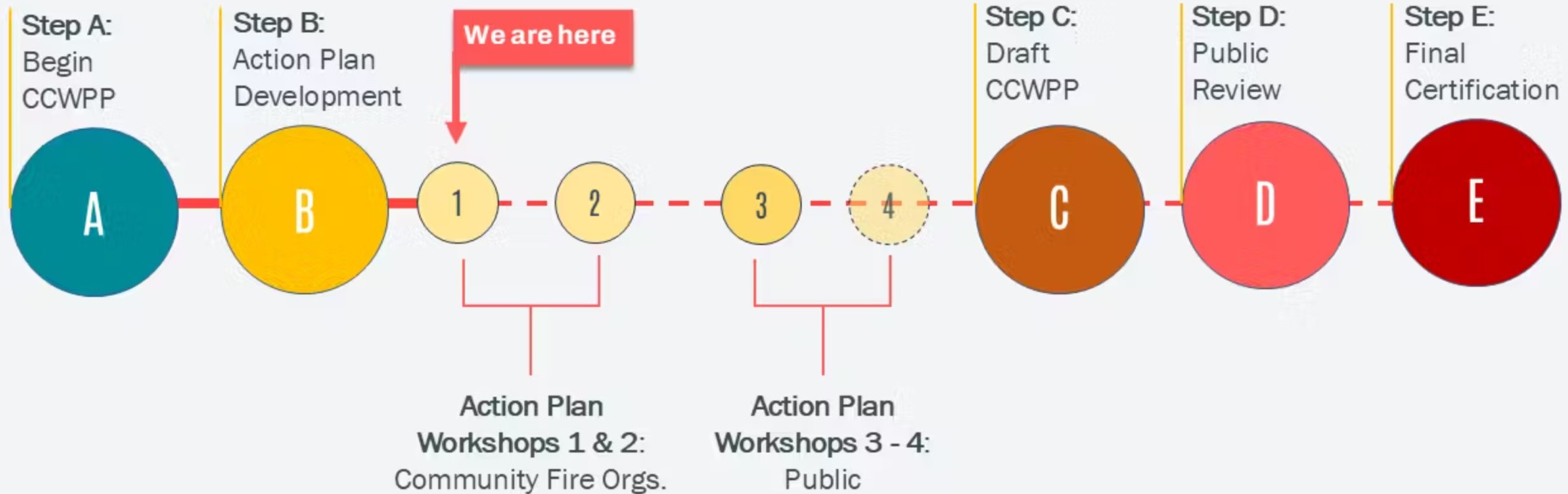
CCWPP Survey



Household Survey

NEXT STEPS

CCWPP Roadmap



Upcoming Workshops

FORECAST ZONE	MEETING DATE	MEETING TIME
ALL ZONES Intro Meeting	Wednesday 7/23/2025	6:00-7:00 pm
Antelope Valley	Wednesday 7/30/2025	6:00-7:00 pm
Santa Clarita Valley	Wednesday 8/6/2025	6:00-7:00 pm
High Country	Wednesday 8/13/2025	6:00-7:00 pm
Santa Monica Mountains	Wednesday 8/20/2025	6:00-7:00 pm
LA Basin - San Gabriel Foothills	Wednesday 8/27/2025	6:00-7:00 pm
LA Basin - Puente Hills	Wednesday 9/3/2025	6:00-7:00 pm

ACTION PLAN WORKSHOPS PART 2

SEPTEMBER-OCTOBER 2025

* Information coming soon

REGISTER
HERE

CCWPP EVENTS



Contact

Contact:

safety@planning.lacounty.gov

Project Page:

planning.lacounty.gov/ccwpp

CCWPP WEBSITE



Q & A



Resources

Setting up a Fire Wise Community

Gabriel Albarian Jr. - Regional Coordinator, NFPA Firewise USA, Los Angeles County
GabrielAlbarian@gmail.com

Gold Spotted Oak Borer (GSOB) and Tree of Heaven management

Gay Crusius - Green Valley-Angeles National Forest Fire Safe Council & Green Valley Oak Alliance
gcrusius@gmail.com

Hosting neighborhood education and workdays

Pauline Allen – Executive Director - Santa Monica Mountains Regional Fire Safe Council
pauline@smmfsc.org

Resources

CalFire Defensible Space Assessor (DSA) Class

September 16-September 17

8:00 am-5:00 pm

1333 Mayflower Ave. #360, Monrovia



To register – use QR Code or contact

Fire-ForestryPublicInfo@fire.lacounty.gov

CAL FIRE

Mentimeter

Defensible Space Assessor (DSA) Class



Upon completion of the class, qualified entities may perform defensible space and home hardening assessments.

9/16/2025 – 9/17/2025
8:00am – 5:00pm
San Gabriel Valley Council of Governments
1333 Mayflower Ave # 360, Monrovia, CA
91016
Please bring a smart device

What is a Qualified Entity (QE)?

Approved agencies/organizations that are eligible for the training.

- California Conservation Corps
- California Volunteers
- Local Conservation Corps
- Resource Conservation District
- Fire Safe Councils
- Firewise USA
- University of California Fire Advisors (UCCE)
- Registered Professional Foresters
- Counties, state conservancies, special districts, and other political subdivisions of the state


Training

- 16-hour (two days) in-person training
- Defensible Space requirements and best practices
- Home Hardening and retrofitting
- Wildfire history, laws, research, and assessments
- Document assessments using CAL FIRE's electronic data collection application
- Consistent training and coordinated messages throughout the state
- Certificate of Completion

Benefits

- Increased public education and awareness
- Nonregulatory assistance to reduce wildfire risk
- Create more wildfire-resistant communities
- Networking with other local agencies/organizations and CAL FIRE
- Allow fire agencies to focus their inspection, enforcement, and educational resources
- Assist in estimating defensible space compliance

Click [Register](#) or Scan the QR Code:



Questions?
Please contact Fire-ForestryPublicInfo@fire.lacounty.gov

THANK YOU!

