



THE GRIFFIN PLAYERS  
PROUDLY PRESENT



# THE FANTASTIC FAMILY PANTOMIME

WRITTEN BY  
TOM WHALLEY PANTOMIMES

# ROBIN

# HOOD

LUTON LIBRARY THEATRE  
6TH TO 8TH & 13TH TO  
15TH DECEMBER 2024

[THEGRIFFINPLAYERS.CO.UK](http://THEGRIFFINPLAYERS.CO.UK)



# T'WAS THE NIGHT BEFORE PANTO

By Joshua Thompson

T'was the night before Panto,  
and we're here for this show,  
The scenery is ready,  
the lights are aglow;

The cast are all ready to help bring Christmas joy,  
And to bring panto magic for each Girl and Boy;

The band are all ready, music plays in your head,  
While dances are perfected to every last tread.

See Robin Hood join forces with his brave Merry Men,  
He's amazing at archery, he always hits the ten!

Will the Sheriff win?... Or will Robin prevail?  
With Maid Marion beside him, they surely can't fail!

With King Richard away, Nanny Flapjack leads the clan;  
Can good defeat evil, and beat the Sheriff's plan?

Watch this adventure with awe, and all will be fine,  
As you sit back and enjoy our fun pantomime!

So, with panto-land looming,  
and Robin ready to go,  
Happy Christmas to all,  
and have fun at our show!





# A NOTE FROM OUR DIRECTOR

WELCOME TO SHERWOOD FOREST! I HOPE THAT YOU HAVE AN ENJOYABLE TIME WITH US. I HAVE CERTAINLY ENJOYED MY TIME REHEARSING THE SHOW WITH THIS GREAT CAST, WITH MANY LAUGHS ALONG THE WAY.

I WOULD ESPECIALLY LIKE TO THANK KATE AND KYRA FOR BEING MY SOUNDING BOARD, AND TO CHRIS, FOR BEING A GRIFFIN NEWBIE AND SETTLING IN SO WELL. A HUGE WELL DONE ALSO NEEDS TO BE GIVEN TO THE WHOLE OF THE TECHNICAL TEAM, LIGHTING, SOUND AND BACKSTAGE – WITHOUT WHOM THE SHOW WOULD BE HALF OF WHAT IT IS.

LASTLY, THANKS ALSO TO THE GRIFFIN PLAYERS COMMITTEE FOR ASKING ME TO DIRECT ONCE AGAIN. SINCE PERFORMING IN “DAZZLE”, MY FIRST GRIFFIN SHOW WAY BACK IN 1985, THIS IS NOW MY 49TH SHOW WITH THEM – WHAT WILL BE MY 50TH – IF THEY’LL HAVE ME BACK!? BUT BACK TO THE PRESENT – SO SIT BACK, GET READY TO ‘BOO’, CHEER AND SHOUT – AND ON WITH THE SHOW!



*Tim Hayden*



# THE CAST OF ROBIN HOOD



**ROBIN HOOD**

**ALEX CURRIE**



**MAID MARION**

**MADISON-MAY ORCHARD**



**NANNY FLAPJACK**

**TIM HAYDEN**



**SILLY WILLY**

**LUKE MURPHY**



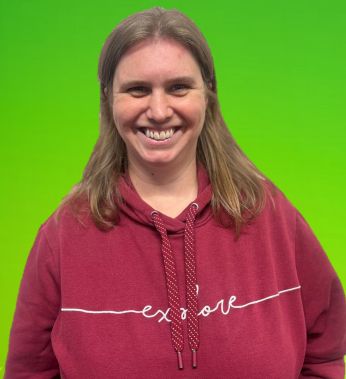
**SHERIFF OF NOTTINGHAM**

**PAUL RAMSEY**



**DEPUTY SCRATCH**

**MEL RAMSEY**



**SHERWOOD SPRITE**

**CHERYL DESBOROUGH**



**ALAN-A-DALE**

**LORNA TRAPP**



**KING RICHARD**

**BEN JAGGERS**



# THE CAST OF ROBIN HOOD

## TEAM SCRATCH



**LITTLE J.**

**INDY HILLS**



**MUCH**

**ELIZABETH POUND**



**AYANNA STRATFORD, EDDIE KELLY, IVY JAGGERS, LIVIA STRATFORD,  
PORTA-ROSE WILKINSON, LUCAS SMARTT, EVAN GROOM, MIA YATES,  
ROSIE BROOM, INDY HILLS, ELIZABETH POUND, MAE WIGLEY,  
ALICE BERMINGHAM**



# THE CAST OF ROBIN HOOD

## TEAM SNIFF



**LITTLE J.**  
**GRACE COLLINS**



**MUCH**  
**GRACE JOHNSTON**



**CASSIE ROGERS, ALEXANDER KAHAYOVA, CALLIE DESBOROUGH,**  
**DARCY EVANS, VICTORIA KEHAYOVA, AVA BREE LYNCH,**  
**ELODIE RAMSEY, EFFIE DESBOROUGH, EMILY BAXTER, KATIE EVANS,**  
**GRACE JOHNSTON, GRACE COLLINS, KATIE ALLEN**



# THE CAST OF ROBIN HOOD

## ADULT ENSEMBLE



**IZZY WHEELER, AILISH BRENNAN, LEWIS McINTOSH, BEN JAGGERS,  
ELLY FARRAR, ALLANAH ROGERS, ROSIE TILL, KERRY COLLINS,  
JACKIE HOUGHTON, MICHELLE GARUFI**



Have you **enjoyed** the show today?

Looking for a **fun** way to get involved in your community  
and meet some **great people** along the way?

**The Griffin Players are run entirely by volunteers, and we have lots of opportunities for volunteers to help us out to play the big part in our community that we do.**

Firstly, we are always interested in new people who would like to help out with one of productions; whether it's front of house, backstage, set design, lighting, costumes, sound, or another element of production, there is plenty of opportunity for you to get involved.

Secondly, if you want to get involved in the running of this group, then you could join our Committee members in helping behind the scenes to create the magic that is seen onstage.

Finally, we are looking for new Directors, Musical directors and Choreographers for future shows. If you are interested in letting your creative side out, then get in contact with us.

Community theatre has an amazing place in giving opportunities to people of all ages, and as volunteers, any help given is greatly appreciated. Previous experience is not always necessary.

Why not speak to one of our team members today if you are interested, or visit us online via our Facebook page or at [thegriffinplayers.co.uk](http://thegriffinplayers.co.uk).

**Merry Christmas and Happy New Year from everyone at  
THE GRIFFIN PLAYERS!**



# PRODUCTION TEAM

Written By	Tom Whalley
Director	Tim Hayden
Musical Director	Chris Burrett
Choreographer	Kate Johnson
Assistant Choreographer	Kyra Spratley
Production Manager	Joshua Thompson
Band	Chris Burrett (Drums), Jemma Graham (Piano)
Stage Manager	Mike Desborough
Back Stage Crew	Joshua Thompson, Luke Walsh, Alice Clothier, Miriam Swain, Martin Myers, Emma Carter
Lighting	Dave Houghton, Graeme Halls, Josh Mitchell, Zach Pugh and Andrew Maxted
Sound	Aidan Brown, Liam Whiteside and Ken Brown Sound equipment provided by EventTech Production Services Ltd.
Costumes	Kelly Seaton and Dress Up and Dance - 24 High Oaks, St Albans
Front of House	Debbie Cavanagh, Katy Elliott, Beth Thomas, Deborah Cheshire, Emma Mills, Fiona Whiteside, Fossy Meade-Fawcett, Gary Nash, Jenna Ryder -Oliver, Kelly Seaton, Liz Hale, Lynda Fagan, Peri Lynn, Steve Peters
Publicity	Nico Whitney-Bamford, Joshua Thompson, John O'Leary-Fawcett, Luke Walsh and Alex Currie
Programme	Joshua Thompson
Chaperones	Abbie Walsh, Nichola Johnston, Faye Tolliday

**We extend our thanks to the team at Bushmead Community Hub and the Luton Creative Community for their support, without whom, this production would not have been possible.**

**We would also like to thank our audiences for their support of The Griffin Players over the past 90 years of Amateur Dramatics in Luton**







OUR NEXT PRODUCTION



THE GRIFFIN PLAYERS PROUDLY PRESENT  
OUR HILARIOUS ADULT PANTOMIME



# SCROODE

*...the Naughty  
Christmas Carol!*

LUTON LIBRARY

THEATRE

23RD TO 25TH JAN

AND 30TH JAN

WRITTEN BY RICHARD ALEXANDER  
& JOSHUA THOMPSON

BOOK YOUR TICKETS NOW AT  
[THEGRIFFINPLAYERS.CO.UK](http://THEGRIFFINPLAYERS.CO.UK)





COMING SOON...



The Griffin Players  
Proudly Present

# The WEDDING Singer

Luton Library Theatre  
19th to 21<sup>st</sup> June 2025

Music by  
Matthew Sklar

Book by Chad Beguelin and  
Tim Herlihy

Lyrics by  
Chad Beguelin

Further information available at [thegriffinplayers.co.uk](http://thegriffinplayers.co.uk)

Based upon the New Line Cinema film, Written by Tim Herlihy

This amateur production is presented by arrangement with Music Theatre International

All authorised performance materials are also supplied by MTI

[www.mtishows.co.uk](http://www.mtishows.co.uk)



# OUR FUTURE PANTOMIMES

THE GRIFFIN PLAYERS PROUDLY PRESENT  
THE FANTASTIC FAMILY PANTOMIME



## Dick Whittington and his Wonderful Cat

LUTON LIBRARY THEATRE  
6TH-7TH & 13TH-14TH  
DECEMBER 2025

FOR MORE INFORMATION VISIT  
[THEGRIFFINPLAYERS.CO.UK](http://THEGRIFFINPLAYERS.CO.UK)



THE GRIFFIN PLAYERS PRESENT  
THE ANNUAL NAUGHTY ADULT PANTO



18+

## Dick Whittington Written by Tom Whalley

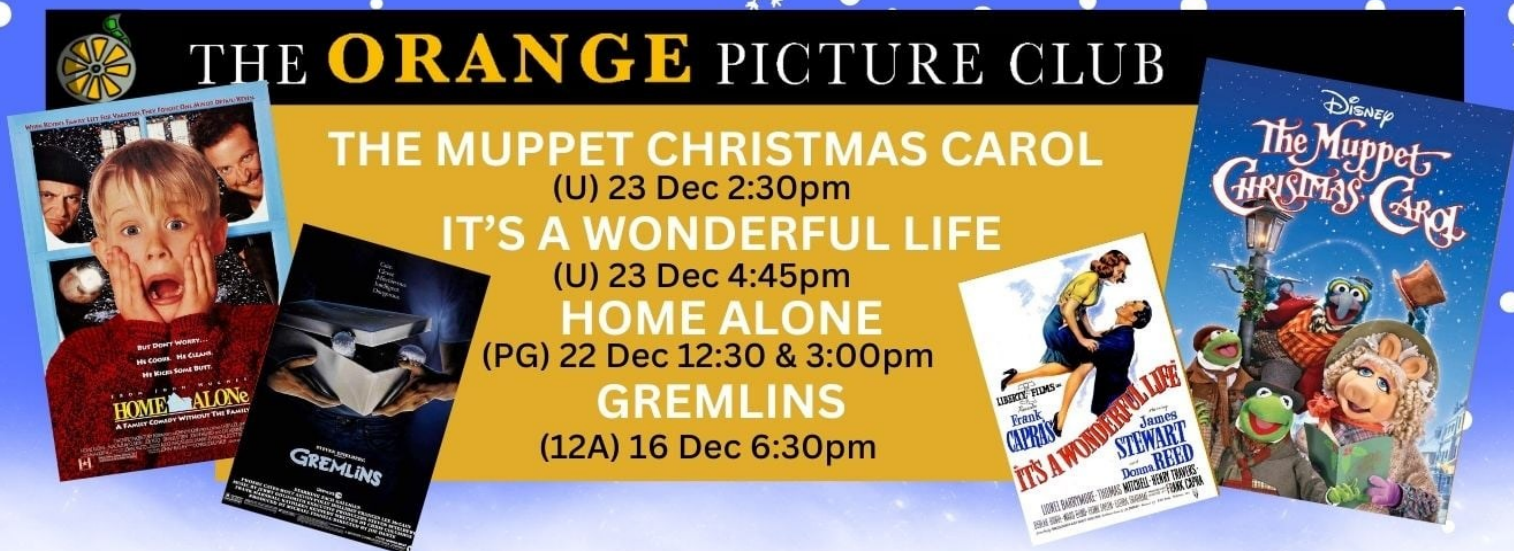
COMING TO THE LUTON LIBRARY  
THEATRE  
22ND-24TH & 29TH-31ST JANUARY 2026

FOR MORE INFORMATION VISIT  
[THEGRIFFINPLAYERS.CO.UK](http://THEGRIFFINPLAYERS.CO.UK)





# FUN FOR KIDS AT LUTON LIBRARY THEATRE





# OTHER PRODUCTIONS IN THE LOCAL AREA



St Andrew's Players

*Proudly Presents*

## Christmas is a Coming

OUR ONE ACT FESTIVE FAVOURITE!

7.30pm start

Saturday 21st December 2024

St. Andrews Church,  
Luton,  
LU3 1HA

Adults £10  
Children £5

[www.ticketsource.co.uk/standram](http://www.ticketsource.co.uk/standram)



CANCER  
RESEARCH  
UK



Keech  
hospice care



Dunstable Rep Proudly Present

## The House On The Cliff

A Mystery Thriller

By George Batson,

Directed by Philip Davis

From a TV play by

George Batson and Donn Harmon



[Instagram.com/dunstablerep](https://www.instagram.com/dunstablerep)



[Facebook.com/DunstableRep](https://www.facebook.com/DunstableRep)



[Twitter.com/DunstableRep](https://twitter.com/DunstableRep)

Performances HERE at  
THE LITTLE THEATRE

17th to 25th January 2025

Book tickets online at [littletheatre.org.uk](http://littletheatre.org.uk)

This amateur production of  
"The House on the Cliff" is presented by  
arrangement with Concord Theatricals Ltd.  
on behalf of Samuel French Ltd. [www.concordtheatricals.co.uk](http://www.concordtheatricals.co.uk)





OTHER PRODUCTIONS IN THE LOCAL AREA

PHOENIX PLAYERS  
PROUDLY PRESENTS:



# ABIGAIL'S PARTY

BY MIKE LEIGH



APRIL 3RD, 4TH & 5TH  
TADS THEATRE, CONGER LANE, TODDINGTON, BEDS. LU5 6BT

[www.lutonphoenixplayers.com](http://www.lutonphoenixplayers.com)



# OTHER PRODUCTIONS IN THE LOCAL AREA



St. Andrew's Players  
*Proudly Present*

15th - 17th  
May 2025

# Cadbury Angels

Written and directed by Ali Smith

St. Andrew's Church,  
Luton,  
LU3 1HA

[www.standrewsplayers.co.uk](http://www.standrewsplayers.co.uk)

By arrangement with Lazy Bee Scripts





Luton Creative Community (LCC) warmly welcome the Griffin Players back to the Luton Library Theatre, a year after LCC made this venue a community theatre for the community, run entirely by a small team of volunteers.

We would like to thank the Griffin Players for their continued support of the Library Theatre, and also thank their members, many of whom have played an invaluable role in LCC, as we battle to save the Library Theatre as a performance space, when there was a real danger it would close forever.

As we welcome you to our theatre, it may appear that everything is finished, but sadly that is not the case. The lights and sound you enjoy today during the production have been brought in temporarily by the Griffins. When they leave, LCC have the task of installing our own lighting and sound equipment, some of which still needs to be purchased.

Much has been donated for which we are hugely thankful, but we are still in desperate need of additional funds to help us complete the many outstanding tasks.

You can easily donate using any of the QR codes around the theatre, for which we would be immensely grateful.

Thank you for supporting the Griffin Players and LCC. We hope to see you back at the Library Theatre very soon.

**LCC Executive**