

NODA
for every stage

THE GRIFFIN PLAYERS PROUDLY PRESENT



FROM THE CREATOR OF
WICKED & **PRINCE OF EGYPT**
THE HIT MUSICAL

PIPPIN

**PRESS START
TO FIND YOUR EXTRAORDINARY**

**Book by
Roger O.Hirshon**

**Music & Lyrics by
Stephen Schwartz**

**Coming to Luton Library Theatre
19th - 20th June 2026**

Including Saturday Matinee

Originally produced on the Broadway stage by Stuart Ostrow
Directed on the Broadway stage by Bob Fosse
2013 Broadway revival directed by Diane Paulus
Theo Ending Originally Conceived In 1988 by Mitch Sebastian
This amateur production is presented by arrangement
All authorised performance materials are also supplied by MTI

PIPPIN

Back in 2012, Beth, Lynette and I went to see a production of 'Pippin' in the intimate surroundings of The Menier Chocolate Factory Theatre. I had seen a production back in the 90s but couldn't remember much about it apart from the fact I had enjoyed it. The production at the Menier blew us away and there and then we said we wanted to stage a production one day. Fourteen years later that wish has come true.

I want to thank Beth and Lynette for being so inspirational. We last worked together sixteen years ago and it has been an utter joy to work with these two incredibly talented people to bring Pippin to the Library Theatre. I also want to thank The Griffins for being willing to take on a show that is little known in this country, our fabulous cast who have worked tirelessly in rehearsals and kept me on my toes, our wonderful 'backstage' team, and finally you, our audience. We hope that there will be 'magic to do' tonight and that you will go home having had a fun evening.

Finally I would like to dedicate this production to my mum. She was always a great supporter of my theatrical endeavours and she is greatly missed.



Keith Turton

PIPPIN

Director Keith Turton

Musical Director Beth Thomas

Choreographer Lynette Driver

Orchestrations Tom Arnold

Additional Vocal Recordings Nico Whitney-Bamford

Stage Manager Jenny McDonald

Production Manager Katy Elliott

Costumes, Props and Set Keith Turton

Publicity Nicole Read, Alex Currie, Luke Walsh, Rosalind White, Beth Thomas, Nico Whitney-Bamford and Joshua Thompson

Front of House Manager Chloe Whitney-Bamford

Front of House Team Izzy Melville, Simon Tuck, Sighanne Seaton, Katy Elliott, Luke Walsh, Izzy Wheeler and Alex Currie

Lighting Design Dave Houghton

Lighting Programmer Zackary Pugh

Lighting Team Graeme Halls and Andrew Maxted

Sound Aidan Brown, Ken Brown and Liam Whiteside
Equipment provided by EventTech Ltd

Programme Design Joshua Thompson

Photography Rosalind White Photography

Chaperone Abbie Walsh

We would like to thank everyone at both Bushmead Community Hub and Hillborough Junior School for their continued help during our rehearsal process.

PIPPIN

Synopsis

A travelling troupe of performers invites the audience to witness the story of a young prince, Pippin, who is searching for meaning and purpose in his life.

Fresh from his studies, Pippin longs to find something extraordinary that will make his life worthwhile. Encouraged by the troupe's charismatic leader, he sets out on a journey of discovery, exploring different paths in search of fulfilment.

He first turns to glory in battle, joining his father, the powerful ruler Charlemagne. However, the brutality of war leaves him disillusioned. Seeking another path, he experiments with pleasure, power, and political influence—even briefly taking the throne himself—but each pursuit ultimately leaves him feeling empty and dissatisfied.

Lost and searching, Pippin encounters Catherine, a widow living a simple, honest life. Through his time with her and her young son, he begins to experience love, responsibility, and the quiet rewards of everyday living. Yet even this newfound happiness frightens him, and he continues to question whether it is enough.

As the troupe urges him toward one final, spectacular act that promises ultimate fulfilment, Pippin must decide what truly gives life meaning. In the end, he rejects the illusion of grandeur and embraces a more genuine, human connection—discovering that perhaps the extraordinary can be found within the ordinary.

PIPPIN

ACT ONE

Magic to Do	Leading Player, Players
Corner of the Sky	Pippin
War is a Science	Charlemagne, Pippin, Players
Glory	Leading Player, Players
Simple Joys	Leading Player
No Time at All	Berthe, Players
With You	Pippin
Spread a Little Sunshine	Fastrada
Morning Glow	Pippin, Leading Player, Players

ACT TWO

Entr'acte	Players
On the Right Track	Leading Player, Pippin
And There He Was	Catherine
Kind of Woman	Catherine, Players
Extraordinary	Pippin
Prayer for a Duck	Pippin, Theo
Love Song	Pippin, Catherine
I Guess I'll Miss the Man	Catherine
Finale	Players
Corner of the Sky (Reprise)	Theo

PIPPIN

CHOOSE YOUR PLAYER



Pippin - Ben Harte

Performing has been a huge part of Ben's life from a very young age. His first professional role was playing Oliver in *Oliver!* at the age of 13. Over the years, he has been fortunate enough to play a variety of memorable roles, including a Lost Boy in *Peter Pan* at the Grove Theatre, John Darling in *Peter Pan* at the Gordon Craig Theatre, Pinocchio, and appearing in productions of *The Sound of Music*. Playing Pippin has been a fantastic experience because his journey is one that many people can relate to—the search for purpose, belonging, and something truly special in life. His story is full of heart, humour, and self-discovery, and he can't wait to share it with audiences and bring his adventure to life on stage.



The Leading Player - Nicole Read

Nicole is fairly new to performing with The Griffin Players after making her debut as Linda in *The Wedding Singer* last year, so she is thrilled to be back for her second production, bringing the iconic character of The Leading Player to life on stage and has enjoyed sinking her teeth into the songs and dances. She previously studied Musical Theatre at the University of Chichester and previous roles include Wendla in *Spring Awakening*, Fay Apple in *Anyone Can Whistle* and 8 pantomimes including playing Cinderella, twice! She'd like to dedicate her performance to her friend, Mark Tuck, who sadly passed away last year but always encouraged her to go for this part!



Catherine - Carla Pointing

Carla is excited to play the role of Catherine because she's a fun, enthusiastic character who sings some great songs! Carla enjoyed performing during school and college, but took a long break. She joined The Griffins in 2022 where she played the role of the Princess in *Jack and the Beanstalk*. Outside of theatre, she enjoys singing and playing piano, occasionally performing at open mic nights. Carla loves playing Catherine as is lots of fun and allows her to be a bit silly.



Berthe - Debbie Cavanagh

Debbie has been performing with The Griffin Players since 1988 and is so happy being reunited with Keith who last directed her in 1995! She has taken part in too many shows to mention but her favourite roles have to be The Beggar Woman in *Sweeney Todd* and Fairy Big Bells in this year's adult pantomime. She loves singing, especially harmonies, so she asks 'Please don't look too closely at my dancing!' Playing Berthe is exciting, as although she is a kind and caring grandmother, she also has an outrageous side! "Pippin" is a show which is not performed very often, so Debbie wants to thank you for joining us in this journey of discovery into life, love, dance, drama, magic, and music!

PIPPIN

CHOOSE YOUR PLAYER



Fastrada - Vicky Wells

Vicky has been performing since the age of 5 and was in her first professional pantomime at age 7. She took a break when she left school at 18 and didn't return until about 4 years ago, where she has been involved in a show at least every 3 months since. Highlights have been performing at the Grove Theatre, Dunstable in "Sunset Boulevard" and playing Blanche DuBois in "A Streetcar named Desire". When she's not in rehearsals or performing, you will find me chilling out with a coffee and a book.



Lewis - Nick Norkin

Nick served in the army for a year, so finally feels his military training is somewhat useful. Nick is relatively new to performing, with just over a year of training under his belt, but already brings a brilliantly unique energy to the stage. His previous roles include Crow in The Snow Queen and, amazingly, Ded Moroz (basically Russian Santa) in a nightclub during university. Outside of theatre, Nick works as a software engineer, writes poetry and scripts he "never does anything with", dances salsa, learns to sing, and creates odd little art pieces - including resin cubes and disco mushrooms. Naturally.



Charlemagne - Joshua Thompson

Joshua has been performing with The Griffin Players since 2008, starring in shows including, Tommy, Footloose, Rock of Ages and has even been involved with 14 of our Adult Pantomimes. Most recently he directed last years summer Musical, The Wedding Singer and he wrote and directed our family pantomime, Dick Whittington and his Wonderful Cat, both of which were nominated in the Regional NODA Awards. He is currently in his fourth year as Chairman of The Griffin Players, and is very excited to be bringing Charlemagne to life in this wonderful show.



Theo - Effie Desborough

Effie has been part of Griffin Players since she was just 4 years old and has appeared in every pantomime since. Now, she's stepping into her first named role, and she couldn't be more excited. When she's not on stage, you'll find her dancing or taking part in her school's debate team.

PIPPIN

CHOOSE YOUR PLAYER



Ensemble - Katicia Blanchard

Katicia joined The Griffin Players last year for The Wedding Singer and has been part of the group ever since. She has loved being involved in productions, meeting so many wonderful people and sharing the stage with such a great group of performers. She is delighted to be part of this show and can't wait to help bring it to life.



Ensemble - Cheryl Desborough

Cheryl has been performing with the Griffins since playing Wendy in Peter Pan in 2005.

Since then Cheryl has performed in musicals such as Tommy and Little Shop of Horrors as well as many pantos (both adult and family).

Cheryl has also been seen being the Musical Director for the Griffins for Witches of Eastwick and pantos (including our next one!)

Cheryl has loved being part of this production and has loved performing with her daughter



Ensemble - Jo Herd

Jo has had the pleasure of performing with The Griffin Players for over 10 years, being involved in both adult pantomimes and musicals. Each experience has been incredibly fun and rewarding.

She was attracted to Pippin due to its iconic 'Fosse' style. She was also interested in how the theme would be brought to life, as she finds the story of a young man on a journey of self-discovery especially relevant today.

She is proud to be part of this production and has thoroughly enjoyed working with such talented individuals.



Ensemble - Lewis McIntosh

Lewis has been with The Griffin Players back in late 2024 with his first Family Panto with us - 'Robin Hood' This will mark his fourth musical in our company and always comes in with a positive attitude. He is always happy to be in the Ensemble as it means he can wear multiple costumes.

Lewis' Grandad, Jim, unfortunately passed away a week before Pippin, but he was always so excited about whatever show Lewis was going to do and even said he loved seeing Lewis doing something he loves so much. Lewis knows he'll still be watching him in spirit and will be with him every step of the way.

PIPPIN

CHOOSE YOUR PLAYER

Ensemble - Kelly Seaton



Kelly is delighted to be appearing in the ensemble of Pippin. She first joined the Griffin Players in 2022, choreographing the adult panto Jack and His Giant Stalk, before joining the committee and later becoming Secretary. She also co-choreographed The Wedding Singer and is excited to be taking to the stage as part of the cast this time around.

When she's not at rehearsals, Kelly runs Dress Up & Dance and has spent much of her life teaching dance and sharing her love of performing arts with others. She would like to thank her friends, family, and the entire cast and crew for making this experience so enjoyable, and hopes you enjoy the show!

Ensemble - Graham Thomas



Graham has very much enjoyed rehearsing for Pippin, working alongside very lovely, supportive and talented people. Although this is his first musical with the Griffins, he has been in other musicals including Priscilla, Guys and Dolls and Addams Family. His biggest role to date was playing Mr Mushnik in Little shop of horrors.

Ensemble - Rosie Till



Rosie has been watching The Griffin Players' productions since she was little, when her parents were still performing with the group. At 15, she decided to follow in their footsteps and has since appeared in several pantomimes. This is her first musical, and she is absolutely thrilled to be part of the cast and help bring this fantastic show to life.

Ensemble - Chloe Whitney-Bamford



Chloe joined The Griffin Players in 2019 and has loved being part of the society ever since, appearing in several of our much-loved pantomimes, mostly of the adult variety. Most recently, she choreographed last year's summer musical, The Wedding Singer, as well as our most recent adult pantomime. Having danced since the age of three, she is especially thrilled to be part of the dance ensemble in this magical show.

PIPPIN

IN THE REHEARSAL ROOM





Have you enjoyed the show today?
Looking for a fun way to get involved in your community and meet some
great people along the way?
Then why not consider joining...
THE GRIFFIN PLAYERS

We are run entirely by volunteers, and we have lots of opportunities for volunteers to help us out to play the big part in our community that we do.

Firstly, we are always interested in new people who would like to help out with one of productions; whether it's front of house, backstage, set design, lighting, costumes, sound, or another element of production, there is plenty of opportunity for you to get involved. Secondly, if you want to get involved in the running of this group, then you could join our Committee members in helping behind the scenes to create the magic that is seen onstage. Finally, we are looking for new Directors, Musical directors and Choreographers for future shows. If you are interested in letting your creative side out, then get in contact with us. Community theatre has an amazing place in giving opportunities to people of all ages, and as volunteers, any help given is greatly appreciated. Previous experience is not always necessary.

Why not speak to one of our team members today if you are interested, or visit us online via our Facebook page or at thegriffinplayers.co.uk.

**Thank you for your continued support from everyone here at
THE GRIFFIN PLAYERS!**



Luton Creative Community (LCC) warmly welcome the Griffin Players back to the Luton Library Theatre, a community theatre for the community, run entirely by a small team of volunteers. We would like to thank the Griffin Players for their continued support of the Library Theatre, and also thank their members, many of whom have played an invaluable role in LCC, as we battle to save the Library Theatre as a performance space, when there was a real danger it would close forever.

As we welcome you to our theatre, it may appear that everything is finished, but sadly that is not the case. The running of a Theatre takes a lot of time and money, and we are always looking for ways to improve this theatre to make your viewing experience as special as possible. Much has been donated for which we are hugely thankful, but we are still in desperate need of additional funds to help us complete the many outstanding tasks.

You can easily donate using any of the QR codes around the theatre, for which we would be immensely grateful.

Thank you for supporting the Griffin Players and LCC. We hope to see you back at the Library Theatre very soon.

LCC Executive

The Griffin Players Presents

Sleeping Beauty



A SPELLBINDING FAMILY PANTOMIME!

**5-6 & 12-13
DECEMBER**

LUTON LIBRARY THEATRE

www.book.thegriffinplayers.co.uk

NODA
For every stage

BY TIM FIRTH
THE AUTHOR OF 'CALENDAR GIRLS'

SHEILA'S ISLAND



A COMEDY IN
THICK FOG



DUNSTABLE REP Proudly Presents

SHEILA'S ISLAND

A Comedy in Thick Fog By Tim Firth

Directed by Johanna White



3-11 July 2026

At THE LITTLE THEATRE, DUNSTABLE

Book tickets online at littletheatre.org.uk

This amateur production of "Sheila's Island" is presented
by arrangement with Concord Theatricals Ltd.
on behalf of Samuel French Ltd. www.concordtheatricals.co.uk

ACT
Company

THE DA VINCI CODE

ADAPTED FOR THE STAGE

by Rachel Wagstaff & Duncan Abel

Based on the Novel by Dan Brown



THE LITTLE THEATRE, DUNSTABLE

21-25 JULY 2026

7:45PM & 2:30PM MATINEE

WWW.TICKETSOURCE.CO.UK/ACTCOMPANY

We have a murder to solve...



Maddie Norman
DS Nook

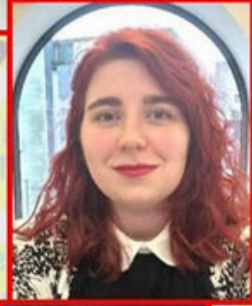


Jonathan Goodson
DI Maxwell



Andrew Mayze
Lysander

Julia Mark
Kimberley
(Saturday)



9-11
July

Thu, Fri
7.30 pm

Saturday
4 pm &
7.30 pm

Arlo Hooper
Beverley



Lucy Gosling



Kimberley (Thu, Fri)

[www.ticketsource.com/
five-pound-theatre](http://www.ticketsource.com/five-pound-theatre)

Bring your own
drinks and supper

Expect blood. Expect intrigue. Expect a shed.

TADS Theatre Group presents

Terry Pratchett's

WYRD SISTERS



A Discworld Play

Adapted by Stephen Briggs

18, 19, 25, 26 September at 7.45pm

Tickets: www.tadstheatre.org

An amateur production by arrangement with Colin Smythe Ltd





15TH - 17TH OCTOBER 2026 7:30PM
SATURDAY MATINEE 2:30PM
THE GROVE THEATRE, DUNSTABLE



IAN FLEMING'S

CHITTY CHITTY BANG BANG



St Andrew's Players

Proudly Presents

Christmas is a Coming

OUR ONE ACT FESTIVE FAVOURITE!

Thursday 10th December 2026



Rosalind White

PHOTOGRAPHY

SIMPLE. HONEST. TIMELESS PORTRAITS.



WWW.ROSALINDWHITEPHOTOGRAPHY.COM

TRINITY HALL BUSINESS PARK LU7 9PY



FANCY DRESS & DANCEWEAR SHOP

FANCY DRESS - Buy or hire costumes and accessories for shows, events, fancy dress parties, nights out, and much more! Our expert team is ready to assist you in finding the perfect look whatever the occasion. Visit our website to see our full range of hire costumes.

DANCE & GYMNASTICS WEAR - We sell a wide range of dancewear, dance shoes, and gymnastic leotards. Expert fitting service available in store.

POINTE SHOES - Our new owner is an Ex-RAD & ISTD Ballet Teacher who offers a professional Pointe Shoe fitting for beginners and seasoned dancers. We stock a range of Pointe Shoe brands such as Bloch, R-Class, Virtisse and more, as well as all of the Pointe Shoe accessories. We even offer a darning and ribbon/elastic sewing service.

FANCY DRESS

Costumes to Buy & Hire
Wigs, Hats, Masks & Accessories
Face Paints & Theatrical Make Up

DANCE

Ballet, Tap, Jazz, Character &
Ballroom Shoes
Pointe Shoes & Accessories
Leotards & Skirts
RAD, ISTD, BBO Uniforms
Dance Tights, Socks, &
Accessories

GYMNASTICS

Leotards & Shorts

& LOADS MORE!

Find Us

Dress Up and Dance, 24 High Oaks,
St Albans, Hertfordshire, AL3 6DL


W www.dressupanddance.com


T 01727 839700 (WHATSAPP)

E hello@dressupanddance.com

SOCIALS

 [dressupanddance](https://www.facebook.com/dressupanddance)

 [dressup_and_dance](https://www.instagram.com/dressup_and_dance)

 [@Dressup_n_dance](https://www.tiktok.com/@Dressup_n_dance)

Whether you are staging a musical, an opera, a play, a concert or a pantomime, as the UK's leading amateur theatre membership organisation, NODA is here for, every show, every rehearsal, every curtain call – here for our members every step of the way.

From just starting out to centre stage; village halls to professional venues; NODA exists to celebrate, connect, support and amplify amateur theatre and theatre groups across the UK.

We provide invaluable services, expertise and resources – that help thousands of our member groups create and produce theatre, that enhances lives and benefits communities everywhere.

Whatever your passion, level of experience or stage of life, we are here to help everyone enjoy the unique benefits, opportunities and sense of community that live performance can bring.

NODA

For every stage

NODA
For every stage

noda.org.uk