



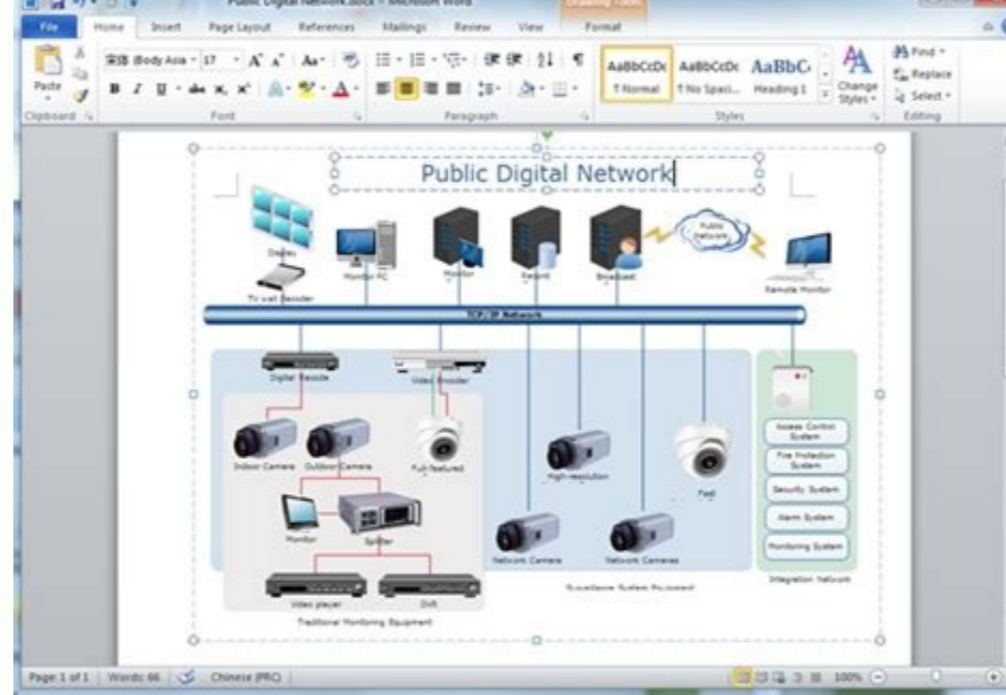
I'm not robot



Continue

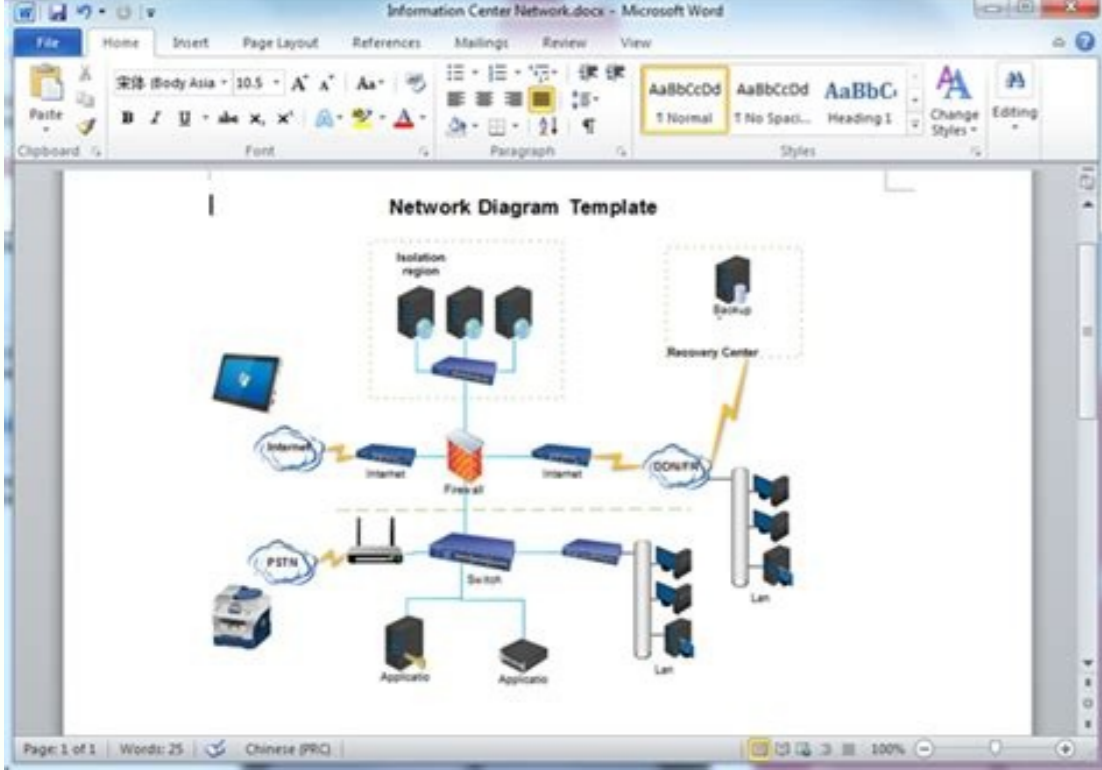
Draw network diagram in word

How to draw project network diagram in word. How to draw cpm network diagram in word. How to draw network diagram in ms word. How to draw a network diagram in microsoft word.



Drawing a network diagram in word. How to draw line diagram in word. How to draw computer network diagram in word.

It is crucial to understand every step of a network diagram, and it will be time-taking for any newbie. However, with Word and its user-friendly templates and other allied elements, a beginner will be able to get a vivid idea about network diagrams. So, here are the steps of how to draw a network diagram in Word: Step 1: Open the File menu. The user first has to open the File menu in Word, go to New and then to the Network option, and select Detailed Network Diagram. Step 2: Click Network Option Next, there will be an option called Networks and Peripherals. The user has to click either on Ring Network or Ethernet menu based on the requirement and insert the same in the drawing page. The user now has to drag the relevant device from the Networks and Peripherals option, or the Computers and Monitors option, accordingly on the drawing page. If users fail to find the network option they can also use shapes in the word option and draw the network diagram. To do so they have to draw shapes after shapes that will help them in creating a graphic group. Step 3: Edit the Shapes Once this is completed, connecting the inserted devices is the next task. So, the user now has to connect these either in Ring Network or Ethernet with the built-in connectors.

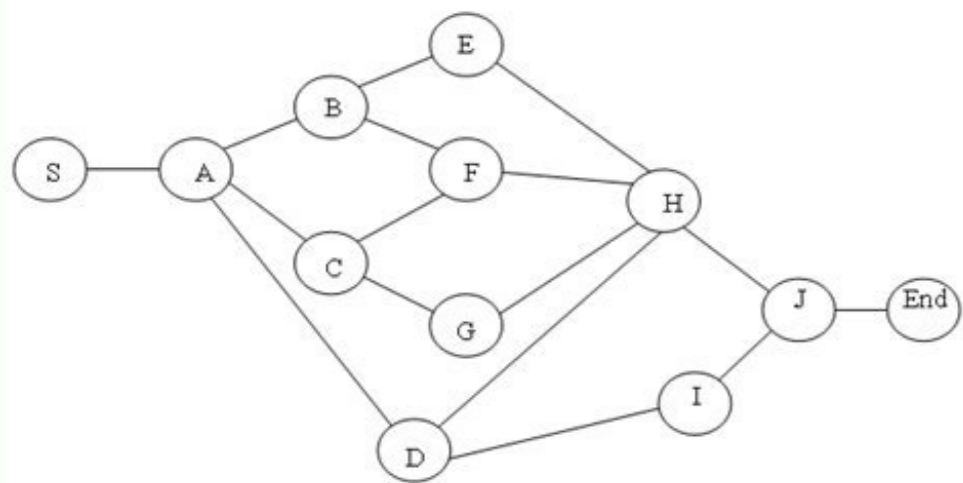


After clicking on the Ring Network or Ethernet menu, when the user takes the mouse cursor to the control handle, the pointer transforms into a four-headed arrow. The user has to drag this on any one of the device shapes. The connection point will turn red upon successful connecting of the shapes. Step 4: Add Text in the Shape The user can add meaning to the diagram by adding significant texts in the network shape, clicking the same, and typing thereafter. Dragging the control handle will enable free movement of the text to the desired location in the network. Step 5: Save and Export Now that your network diagram has finished, the user needs to click on Save and Close present in the top right corner of the drawing page. It will then add the user's diagram in Microsoft Word. 2. How to Make A Network Diagram Easier Now that a user has some initial hands-on over creating a network diagram in Word, it is time to explore the advanced and even better and exciting platforms of drawing a network diagram with none other than EdrawMax Online. Below are the steps to assist in drawing a network diagram in EdrawMax Online: Step 1: Select Mind Map Template The user needs to find the [Network Diagram] option in the EdrawMax online application. then select [Basic Network Diagram] under this classification, as image shows; Source:EdrawMax Online Step 2: Customize Your Network Diagram A page opens with a Plus sign to start with a fresh template.

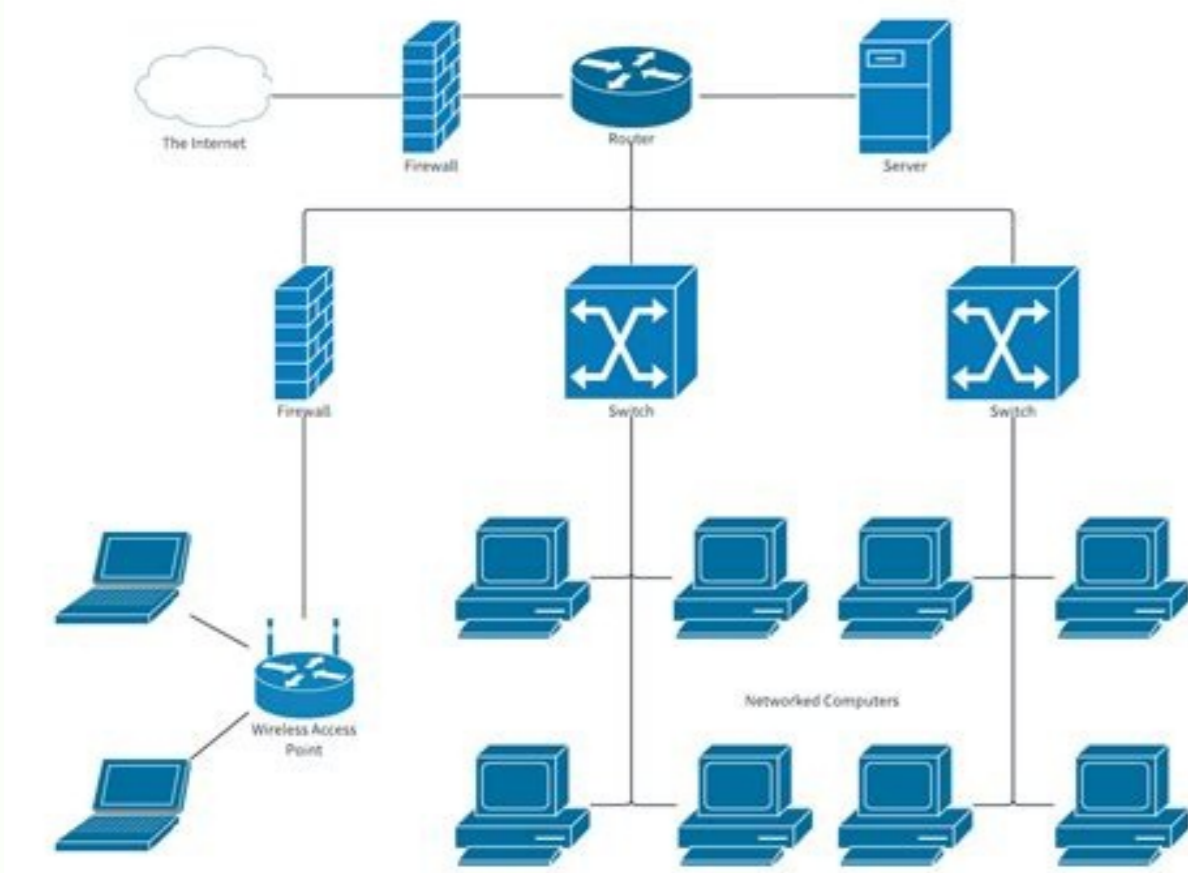


The user can now start editing and making changes in the template by dragging and dropping the shapes and connectors, adding texts, and then joining the whole thing in a relevant fashion to create the required Network Diagram. Source:EdrawMax Online Step 3: Export and Insert After completing the process, the user finally needs to save this in Word format. The file is now ready to use and share amongst all the users. Source:EdrawMax Online 3. Network Diagram Word Templates Sometimes, it is really hard to follow the steps on how to make a network diagram in Word or on EdrawMax Online and create the perfect diagram. At this time, there are network diagram examples you can edit immediately, or for more references. The network diagram examples not only help people to understand a network diagram and its classification deeper, but also assist to draw network diagrams without efforts. Network Diagram Word Template There is a network diagram about the 3D computing cluster upgrade plan. The system network diagram belongs to the system design stage, and the system architecture diagram is only a product of this stage. This template is a system architecture diagram about the framework of the integrated office management platform. Source:EdrawMax Online Visio Network Diagram Template Here is a simple network diagram. You can optimize your current network architecture. For example, using a UML diagram to visualize your software, a flowchart to design system, and a network diagram to understand the devices' relations. Source:EdrawMax Online Project Network Diagram Template A Virtual Private Network (VPN) is a network that allows the private networks at a remote location securely connect to the public Internet and provide access only to the intended recipients for transmitting data. VPN is built by creating the virtual point-to-point connection using the dedicated connections, traffic encryption or virtual tunneling protocols Source:EdrawMax Online 4. Online Network Diagram Maker A network diagram is basically and entirely a visual representation of a wholesome task in a synchronized manner of cluster grouping by way of the interconnection of various groups and systems. EdrawMax Online is a versatile graphical platform and one of the widely accepted choices by esteemed brands presently. Since a network diagram might seem a little puzzling at first, the attractive graphical interface of network diagram tool makes it very enticing for the user to draw a Network Diagram. With a little bit of know-how on how to Draw a Network diagram in Word, the user can work wonders with the fantastic features of EdrawMax Online. It also ensures data security and privacy and is compatible with any and every other platform. So all the users across the platforms can share and make use of the same for monitoring the progress of the project and take action accordingly. Why Choose EdrawMax Online Create over 280 diagram types Supports team collaboration Personal cloud & data protection Print, share and download Powerful template community 5.

Key Takeaways It is always mandatory to have a handy network diagram in place before setting up any computer or other telecommunication network. It helps to ensure seamless delivery of the tasks promptly. It does so by helping in an appropriate visualization of the process flow, troubleshooting the loopholes, getting the same rectified on time, applying the necessary updates in the network by foreseeing the requirements. Last but not least, present it to the financial stakeholders for sale purposes. Network Diagrams are the need of the hour for any industrial project. Therefore, knowing how to create a network diagram in word is of utmost necessity for any user associated with any such project. With EdrawMax Online, a user can always have a helpful and tactical way to solve the jargon of drawing a network diagram owing to its enhanced modern features. If you still confused about how to make a network diagram in EdrawMax Online, here is a network diagram guide to help you create in minutes. EdrawMax specializes in diagramming and visualizing. Learn from this article to know everything about how to make a network diagram and easier way. Just try it free now! Diagrams, charts, and maps are way easier to understand than text. With everything summarised into a visual representation, one can quickly analyze all the available data and make a judgment. Network diagrams have also become a core component of the business. They provide details of the components and linked PCs. Other than that, they show the data flow from one component to another. Network Diagrams are also essential for project management; hence creating them on a regular basis will require some effort and time. While diagram software like EdrawMax is solely designed to make diagrams, many people want to know how to create a network diagram in MS Word and EdrawMax. 1. How to Draw a Network Diagram in Word Network diagrams can be tricky and crucial. However, for beginners looking for a very simple network diagram, MS Word might be a good option. MS Word has a decent amount of symbols and templates to get you started on network diagrams. Creating a Network diagram in MS Word is simple. Follow the steps below to make your network diagram and save it. Open a New File: Open MS Word and click on New to open a new blank document. Now, click on the Network option and select Detailed Network Diagram. Choose the Network Diagram. Next, you will need to select the type of diagram you want from the Network and Peripherals option. From there, either select the ring diagram or the Ethernet network. This will insert the diagram on the page. Once the network is inserted, you can add components like monitors, servers, etc., to the diagram. If you cannot find the networks option, users can use the shapes in MS Word to create their own symbols and network diagram.



Lastly, add text to the diagram and write whatever you want. Connect the Components to Make a Diagram: How your components connect will depend on whether you have chosen Ring Network or Ethernet. Now click on the Ethernet or the Ring Network menu and bring your cursor to the control handle. You will see that the cursor transforms into a four-headed arrow. Click and drag the four-headed arrow to any component you want to connect it to. As the connection point turns red, you have successfully connected both shapes. Save and Export the File: After you are satisfied with your diagram, it is time to save it and exit the application. You can simply press Ctrl+S on the keyboard to save your document. You can also go to File and then click on Save from the left bar to save your work. Just specify the location and save it to the desired location on your PC.



How to Draw a Network Diagram in Word: Open a New File; Choose the Network Diagram; Connect the components to make a diagram; Save and Export the File; 2. How to Draw a Network Diagram in EdrawMax Now that you have seen the method to create a Network Diagram in Word, let us show you the easiest way of creating a similar network diagram in EdrawMax. Step 1 Open EdrawMax & Login The very first step that you need to follow is to install EdrawMax in your system. Go to EdrawMax Download and download the network diagram software depending upon your operating system. If you need remote collaboration with your office team, head to EdrawMax Online and log in using your registered email address. Step 2 Select a Template After launching, the Home screen opens by default. Head to the Template bar and search for Network Diagrams in the search box. In-built network diagram template specific to your search will appear on the screen. Select the template you like and click Use Immediately to open it in a new window for customization. Step 3 Create From Scratch From the EdrawMax homepage, you will find the '+' sign that takes you right to the canvas board, from where you can start designing the network diagram from scratch. Coupled with your technical expertise, you can use a wide range of symbols to draw a detailed network diagram. Step 4 Add Components All the symbols are available in the 'Symbol' section in the toolbar. You can also search for more network diagram symbols in the symbol library on the left side of the screen. Click "Symbols-Predefined Symbol>Network Diagram". Then, choose the network diagram icons you want to import to the symbol library on the left side of the screen. You just need to drag and drop the symbol where you want it to be and double-click on it so you can label it according to your needs. Step 5 Export & Share Once you are satisfied with your network diagram, you can export it into multiple formats, like JPEG, JPG, PNG, PDF, and other Microsoft formats, like MS Word, MS Excel, PPTX, etc. Step 6 Print Your Network Diagram You can also share the network diagram on different social media platforms, like Facebook, Twitter, LinkedIn, etc. Moreover, you can print your network diagram for showing with others. Basically, it is simple to draw a network diagram in EdrawMax, just grab a template and keep customizing, drag and drop professional network diagram symbols to make your plan better. If you are still confused about how to draw a network diagram in EdrawMax, just check the video below. 3. EdrawMax vs. MS Word Now that you have understood how to create a network diagram in both word and EdrawMax, you will better understand the differences. It is important to note here that EdrawMax is specially made to meet your diagramming needs. In comparison, MS Word is a document editing tool that does not specialize in diagrams. With MS word not designed to meet all your diagramming needs, the interface can be challenging to use. The options are limited as well as the tools. Compared to that, EdrawMax is a fantastic alternative as it provides multiple professional templates for you to create your network diagrams. EdrawMax is perfect for beginners and professionals alike, with professional-grade tools and a simple interface. MS Word is mainly an offline tool that does not allow sharing your diagrams in real-time. It also does not allow exporting your data or diagrams into other file formats. Unlike MS Word, EdrawMax will enable you to share your files with your peers so you can work on them simultaneously. EdrawMax also allows you to export your diagrams in any file format that suits you. While creating a network diagram, or any other diagram for that matter, in MS Word, you will note the diagram does not really turn out as you want. That is because Word offers limited options for making a diagram. It can be challenging to let your creativity flow with only certain styles and designs. EdrawMax includes a large number of symbol libraries. You may quickly build any type of diagram with over 26,000 vector-enabled symbols. If you can't locate the symbols you need, you can easily import some images/icons or build your own shape and save it as a symbol for later use. Simply go to the 'Symbols' part of EdrawMax and select the 'Predefined Symbol' section from the top toolbar. Hundreds of symbol categories are accessible for you to utilize and incorporate into your network diagram. Moreover, EdrawMax features a large library of templates. We have more than 25 million registered users who have produced through Templates Community for each design. Simply go to the left panel's template section and type any template you're looking for into the search bar. It will bring up hundreds of pre-built templates that you may utilize right away to meet your needs. Draw a Network Diagram in MS Word: No built-in templates for network diagrams to save time.

It does not allow you to export in multiple file formats. MS Word has a limited symbols library. MS Word works offline and does not allow you to collaborate with other users. Draw a Network Diagram in EdrawMax: Create a Network diagram in just a few seconds using one of the available professional templates. Use any of the available symbols from the vast library or make your own. Allows you to import and export files from multiple files and upload them on any social website. Excellent for beginners and professionals. 4. Free Network Diagram Software MS Word has limited resources when it comes to creating diagrams. While one might be able to create a Network diagram on MS Word, it is not really a satisfactory experience. EdrawMax is a dedicated network diagram software with a wide range of tools and features that will reduce the time and effort you need to create a simple diagram. Here is why we think EdrawMax is just the diagramming tool for you. EdrawMax has thousands of pre-existing templates that can be modified to meet your network diagram needs.

These templates are professionally designed, so you will only leave people in awe once you show them your network diagram. The symbol library contains 50,000+ vector-enabled symbols that are easy to connect to other shapes and icons. In case you do not find a particular symbol, you can import them or draw one yourself. You can reformat and modify them too. The drag and drop function is easy to use. You simply click on a symbol and drag it to your page. One of the best parts about EdrawMax is that it is very easy to use. Unlike other designing software, it has an interface similar to the MS Office suite that makes everything very accessible. EdrawMax also allows you to import and export your work in multiple file formats. EdrawMax Desktop Create over 280 types of diagrams Windows, Mac, Linux (runs in all environments) Professional inbuilt resources and templates On-premises software for business Enterprise-level data security EdrawMax Online Create over 280 types of diagrams online Access diagrams anywhere, anytime Templates Community Team management and collaboration Personal Cloud and Dropbox Integration 5.

Final Thoughts You must choose software carefully depending on what it is designed to do best. MS Word is excellent for typing and formatting documents. However, it lacks proper diagramming tools. That's why we highly recommend you give EdrawMax a try. You will not be disappointed. EdrawMax will allow you to create professional network diagrams with a very user-friendly interface. With an extensive library of templates and symbols, you will be able to better test your creativity with EdrawMax. EdrawMax provides affordable options for all the businesses and organizations that create diagrams regularly. Head to the download option and treat yourself to the best network diagram today. Check this complete guide to know everything about network diagram, like network diagram types, network diagram symbols, and how to make a network diagram.