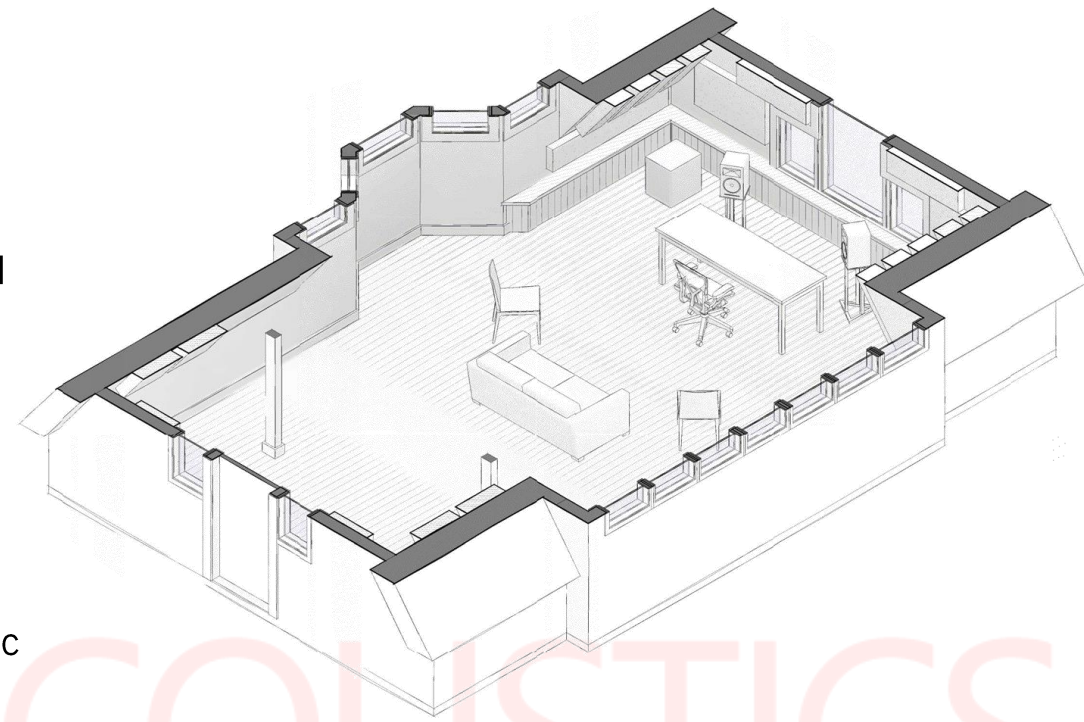


Abbott Road Studios

- Just outside of Boston, Abbott Road is an all-in-one 600-square foot residential recording studio owned by Berklee College of Music MP&E dean Rob Jaczko.
- With roughly 32 feet of depth and an A-frame ceiling, the room is a jack of all trades – from recording a live band to mixing and mastering.
- Rob had been the room with hardly any treatment and less than perfect acoustic response.
- REDI worked alongside WSDG to improve the acoustics of the room and create an environment with balanced acoustics while retaining great feel and look.
- NIRO software was used create a complete acoustic analysis and develop a package of surface applied treatments (Acoustic Parametric Equalizers - APEQs).
- *In-situ* measurements and predictions will follow.



Before & After



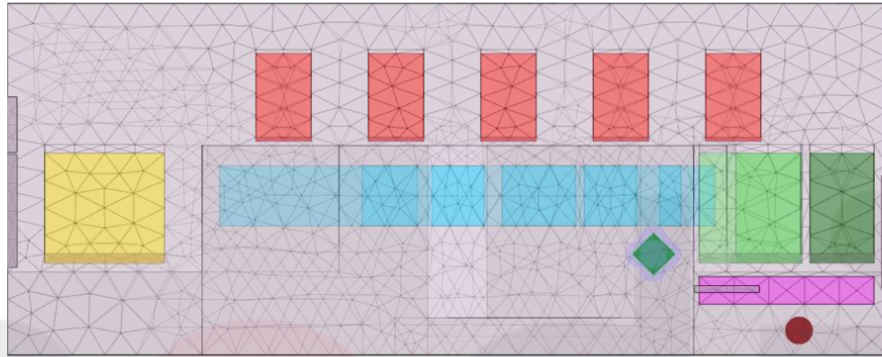
Room with no treatments – pre NIRO



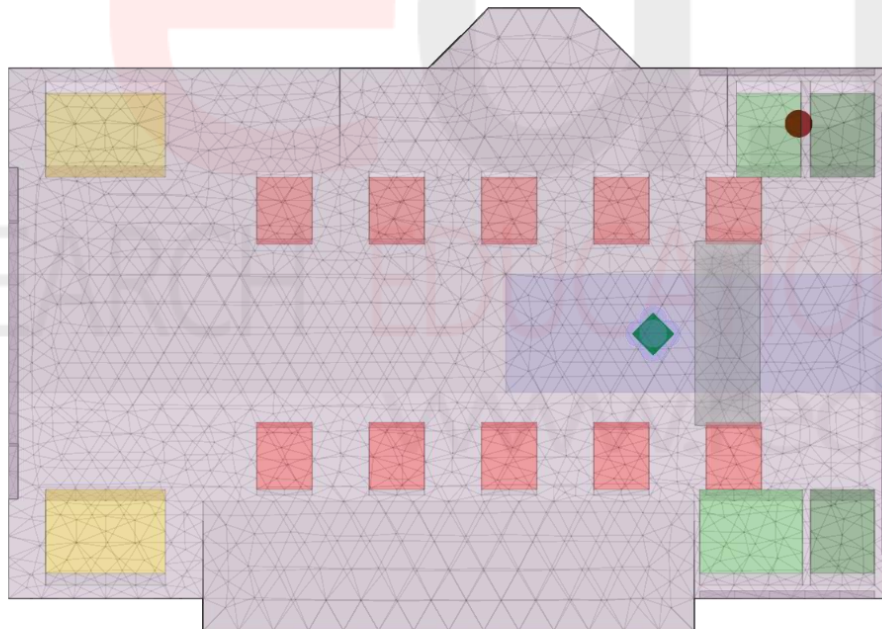
Room with treatments – post NIRO

NIRO Treatment Package

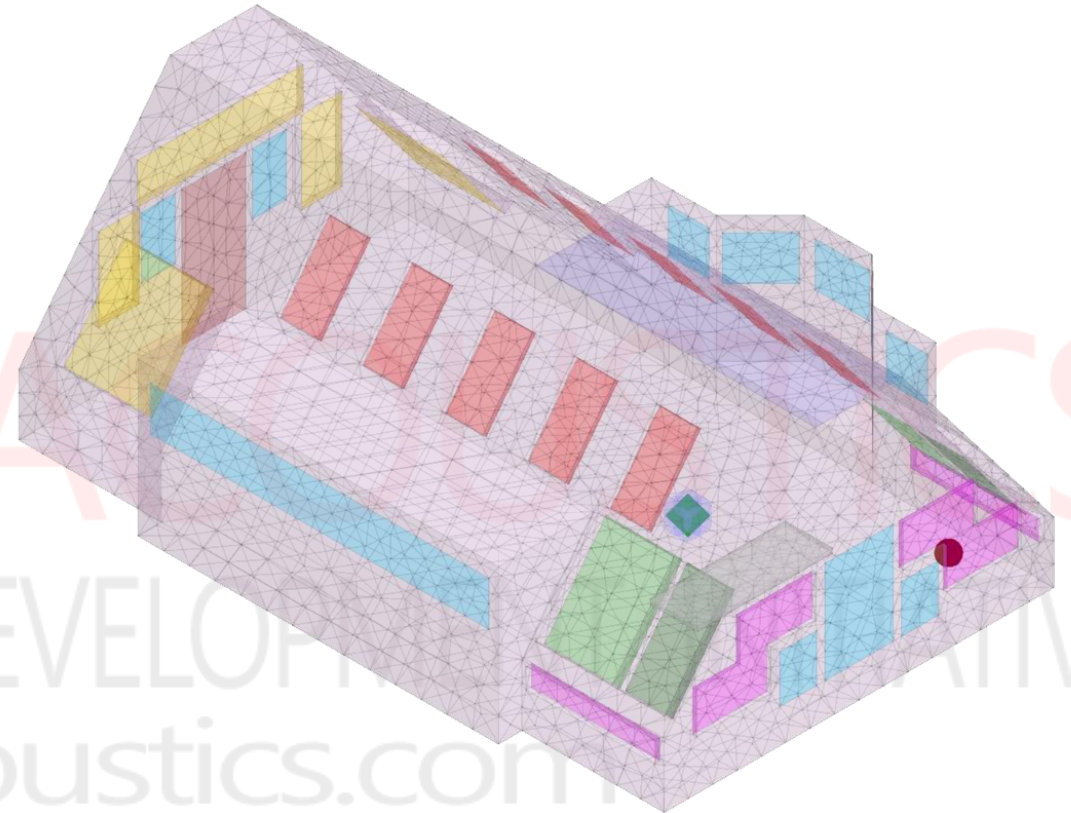
Surface applied APEQs by:



Elevation view



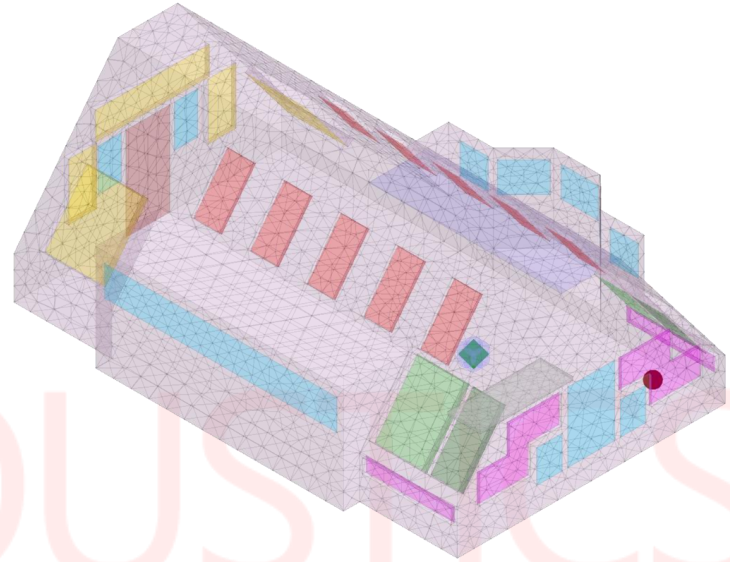
Reflected ceiling view



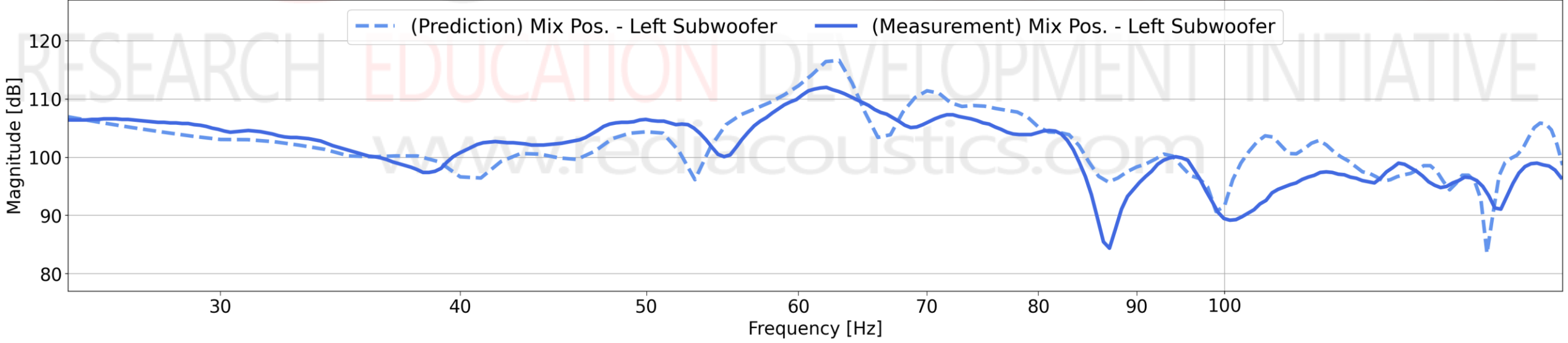
3D isometric view

RESEARCH & DEVELOPMENT
iacoustics.com

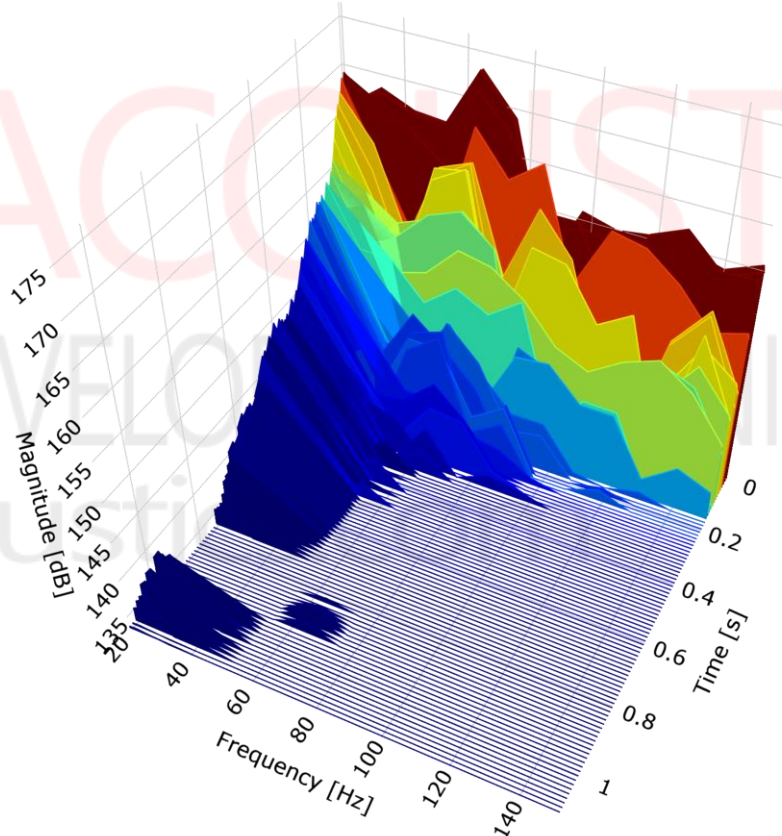
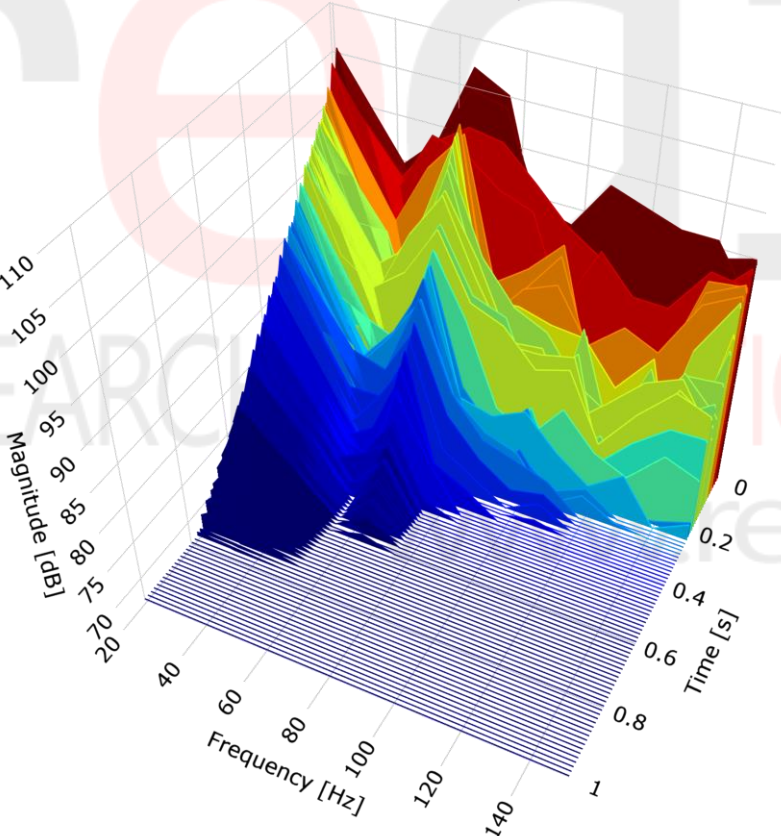
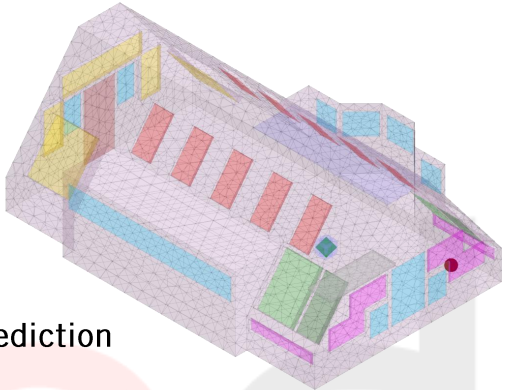
NIRO Prediction vs Measurement – Frequency Response



Narrowband Frequency Response



NIRO Prediction vs Measurement – Temporal Decay

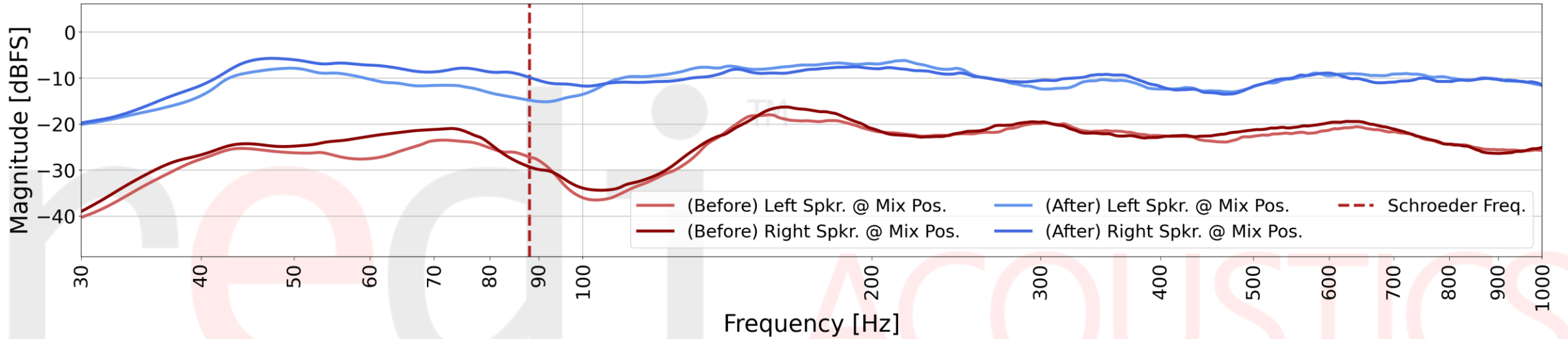


$\Delta\text{Mag.}: 40\text{dB}$

Research Initiative
ACCOUSTICS
RESEARCH INITIATIVE
ION DEVELOPMENT
Mediacoustics

In-situ Measurements – Before & After

Frequency Response Measurements



Reverberation Time Measurements

