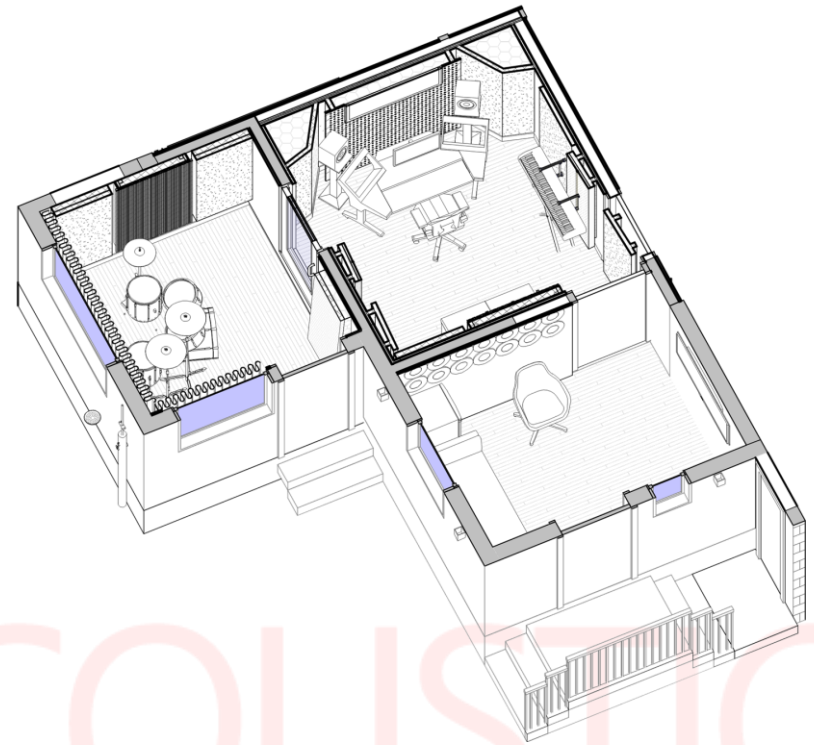
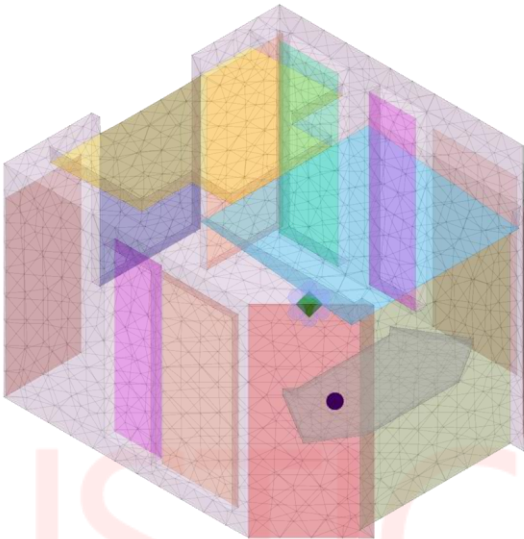
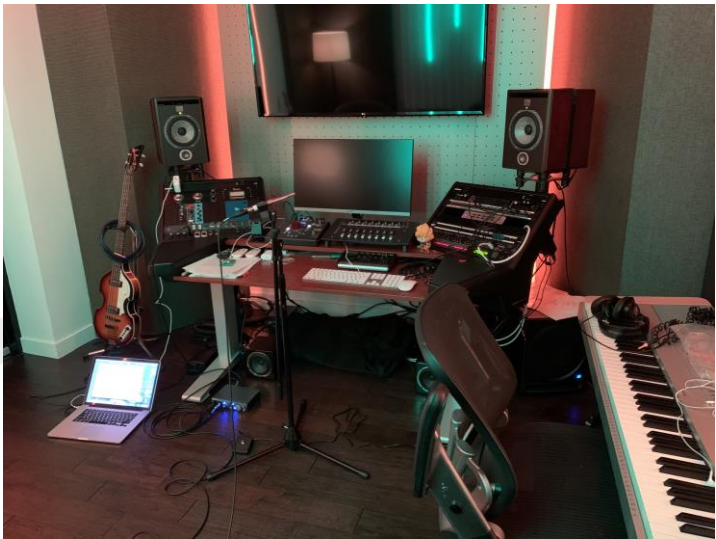


Groovyland Studios

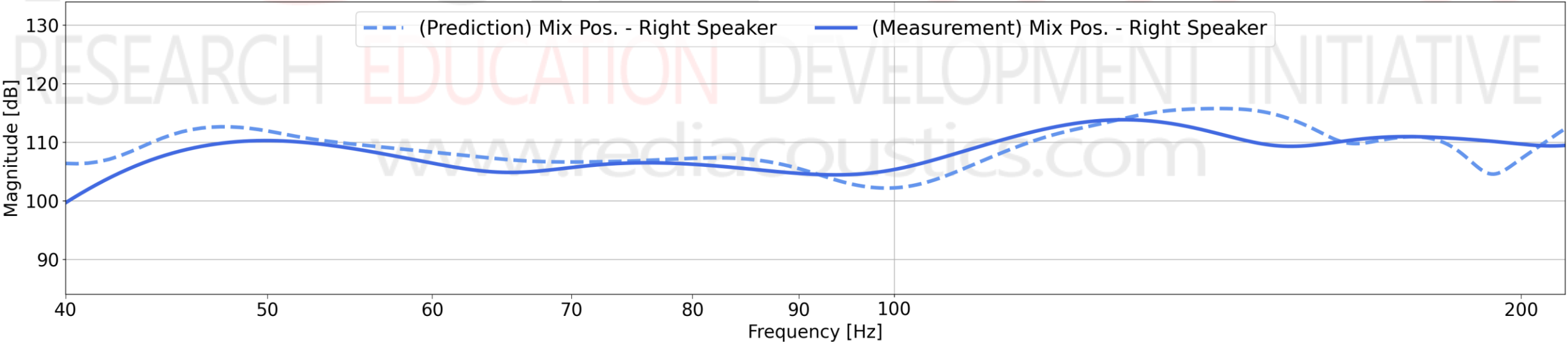
- Based in Miami Beach, Groovyland Studios is a fine representation of the new era “eStudios”.
- Just under 350 sq. ft., and built within the walls of a private home, Groovyland is a compact, multi-purpose recording/mixing/editing facility geared to produce a wide variety of music genres.
- Even though it not designed using NIRO, the REDI team has “reverse engineered” the control room and created an acoustic simulation model to compare the *in-situ* measurements with the NIRO predictions.



NIRO Prediction vs Measurement – Frequency Response

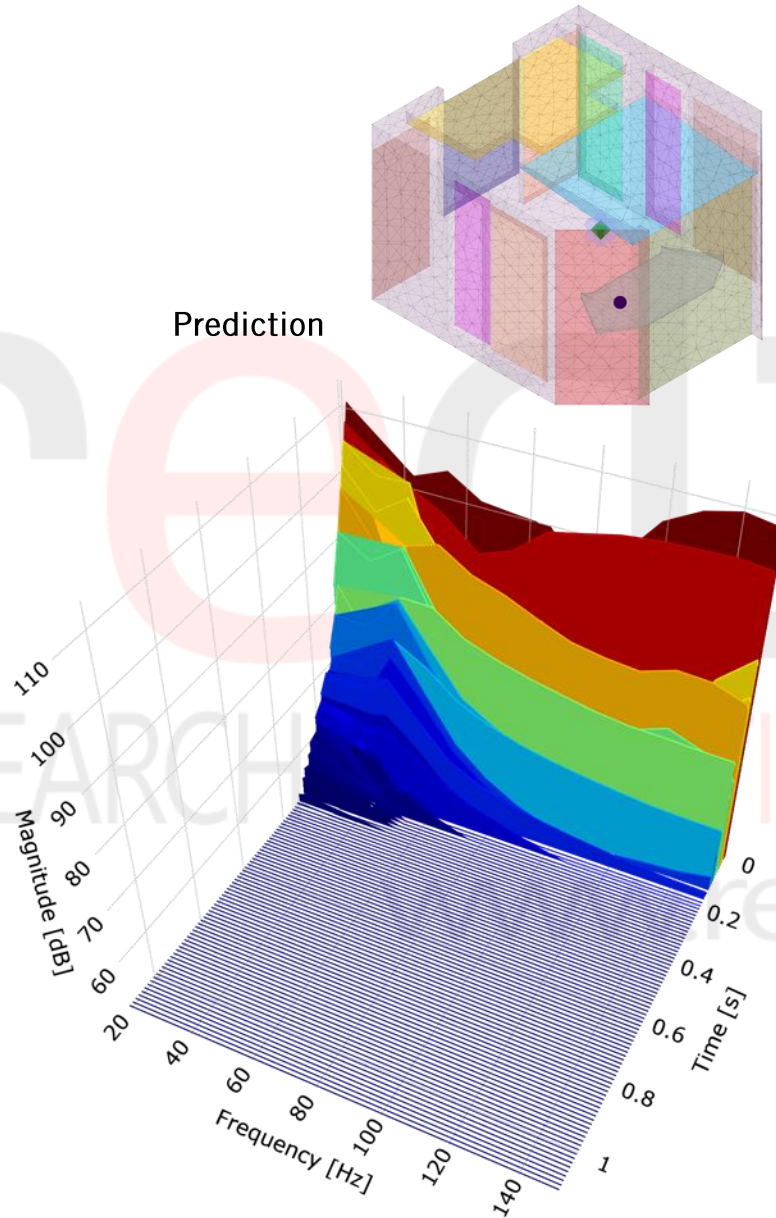


Narrowband Frequency Response



NIRO Prediction vs Measurement – Temporal Decay

Prediction



Measurement



$\Delta\text{Mag.}: 40\text{dB}$

