



**THE RITZ-CARLTON
RESIDENCES**

DUBAI, CREEKSIDE

RESIDENCES

————— FACT SHEET —————

Butterfly Buildings

CREEKSIDE
RESIDENCES

Crafted just like a piece of Art



This drawing is an artistic interpretation of the design. It is not meant to be an exact rendition. Some items may not be standard and/or represent an exact symbol. Exact grading may differ.

Elevator Lobby

MOOD BOARD





This drawing is an artistic interpretation of the design. It is not meant to be an exact rendition. Some items may not be standard and/or represent an exact symbol. Exact grading may differ.

The Interior

SELECTION



Interior decorations, furniture, and finishing are for demonstration purposes only. Final mansions will contain same or equivalent pieces.

Fabric

- Romo
- Casamance
- Rubelli
- Sahco
- Dedar
- Lelievre
- Pierre Frey

Aluminum

- Reynaers
- Gutmann
- Schueco
- Vitrocsa

Wardrobe

- Poliform
- Molteni
- Rimadesio
- Tisettanta

Indoor Furniture

- Giorgetti
- Molteni
- Poliform
- Flexform
- Minotti
- B&B Italia
- Maxalto
- Gubi
- Meridiani
- Cassina
- Ceccotti Collezioni
- Henge
- Porada
- Galloti & Radice
- Baxter Furniture

Outdoor Furniture

- Paola Lenti
- Varaschin
- Kettal
- Dedon
- Tribù
- Gervasoni
- Cassina

Decorative Lighting

- Baroncelli
- CTO Lighting
- Terzani
- Artemide
- Fontana Arte
- Barovier & Toso
- Foscari
- Studio Italia Design
- Penta
- Patrizia Garganti
- DelightFULL
- Andromeda International
- Jean-Michel Othoniel
- Viabizzuno
- Frederik Molenschot

Non-Decorative Lighting

- Viabizzuno
- Iguzzini
- Erco
- Delta Light
- Tragetti

Kitchen

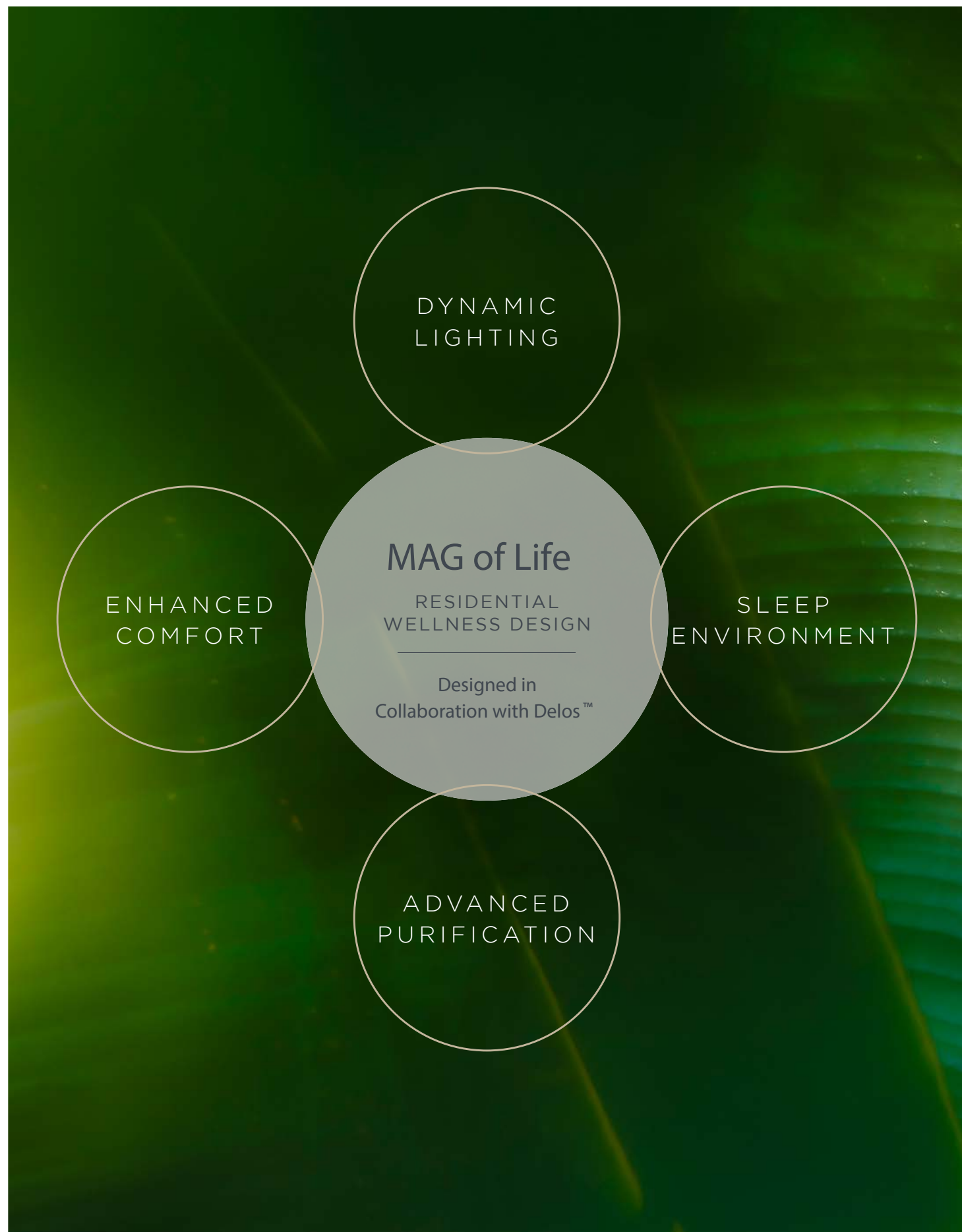
- Poliform
- Dada
- Poggenpohl
- Effeti
- Ernestomeda
- Gullo Luxury Kitchen
- Rossana Kitchen

Kitchen Equipment

- Gaggenau
- Miele Professional
- Sub-zero & Wolf

Sanitary Ware

- Gessi
- Ritmonio
- Zucchetti
- Agape
- Antonio Lupi
- Ceramica Flaminia
- TOTO



Residential Wellness Design

DELOS WELLNESS SOLUTIONS

The world is increasingly more fast-paced, with constant connectivity resulting in a data overload and our nervous systems being continually over stimulated. The necessity to counter balance the intensity of our daily lives is more prevalent than ever.

Every aspect of The Residences interior environment designed in collaboration with Wellness Real Estate pioneer Delos using the world’s leaders in wellness science; the expertise from the Mayo Clinic, Columbia University and Cleveland Clinic to create intimate spaces that heal, restore and nourish from within, to create the region’s first WELL Certified™ private residences.

Wellness is reached though many elements, so when the focus is on what we breath, see, hear and feel, a home can be created with the power to support body and mind.

From lighting based on circadian rhythms, to carefully balanced spaces, exceptional water quality and the world’s purest air, every residence is a haven of multi-dimensional wellness science in action.

Each of The Residence’s interior features fully integrated smart wellness solutions by designed to harmonise the systems of the body with those of the home by bringing in precisely what the body needs and filtering out elements that may harm it.



The DELOS™ Pathways to Health and Happiness.



Inspired by nature's sunrise, Dawn Simulation wakes you gradually and leaves you feeling refreshed.



Enjoy filtered water from the Water Purification system.



Circadian Lighting mimics natural sunlight throughout the day to balance your body's sleep-wake cycle.



As you settle in for the night, lower the Blackout Shades to enjoy a night of deep sleep. Night Lighting allows for safe navigation at night while minimizing sleep disruption.



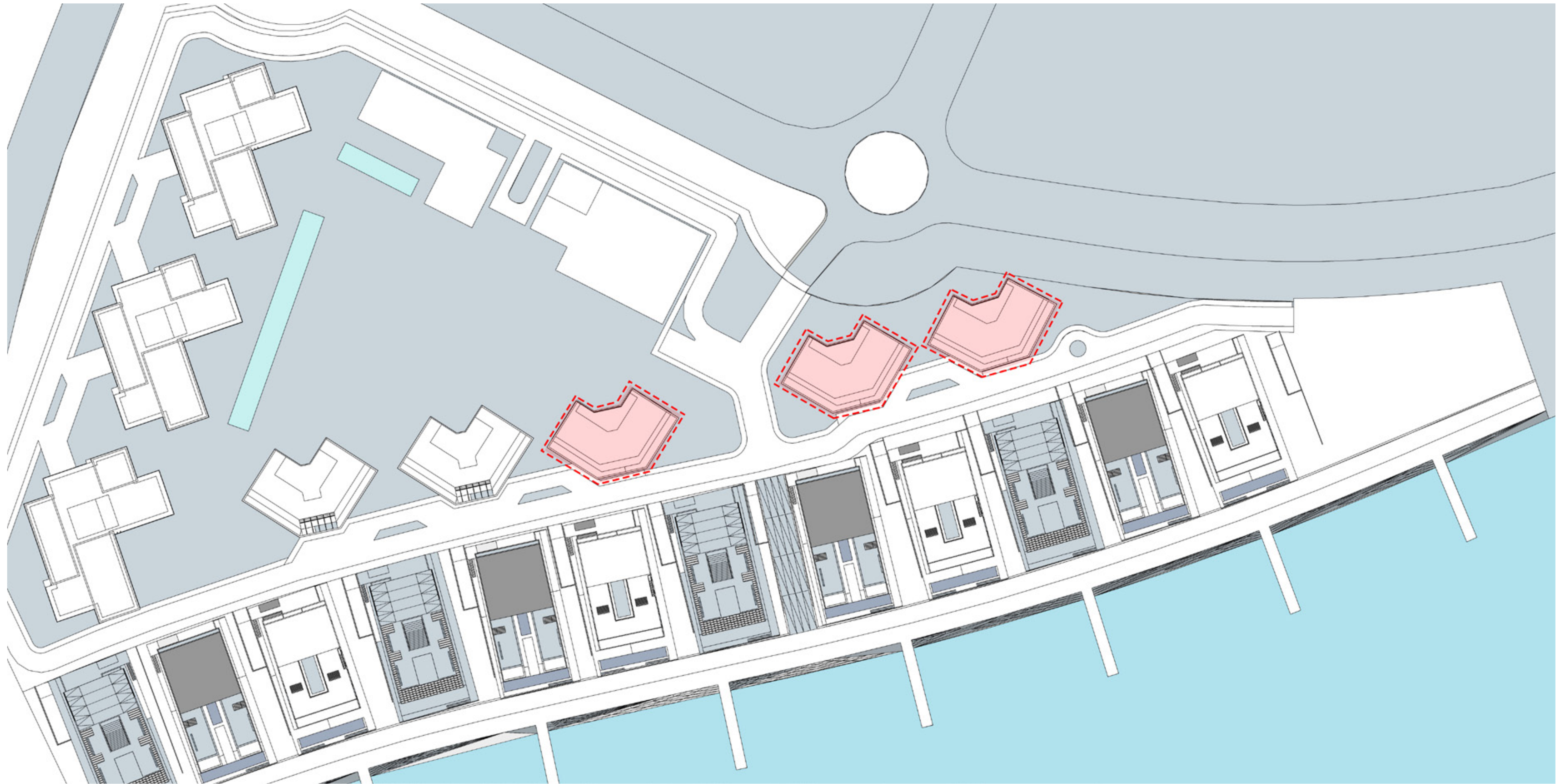
Experience the rejuvenating effects of the Energizing Light before you take your Shower, which will leave your skin and hair soft and smooth.



Throughout the day, the Air Purification system reduces allergens, toxins and smoke.



Unwind for the evening with Guided Meditation narrated by Deepak Chopra.



The Ritz-Carlton Residences, Dubai, Creekside are not owned, developed or sold by The Ritz-Carlton Hotel Company, L.L.C. or its affiliates ("Ritz-Carlton"). MAG of Life FZ-LLC uses The Ritz-Carlton marks under a license from Ritz-Carlton, which has not confirmed the accuracy of any of the statements or representations made herein.



All room sizes and floorplan measurements are approximate and may vary per unit. Floorplans and unit features are preliminary and proposed only. Developer reserves the right to modify, revise, change or withdraw any or all of same in its sole and absolute discretion and without prior notice. Depictions of furnishings, finishes, appliances, counters, soffits, floor coverings and other matters of detail, including, without limitation, items of finish and decoration are conceptual only and are not necessarily included in each Unit. Consult your Agreement and the Prospectus for items included with your Unit.

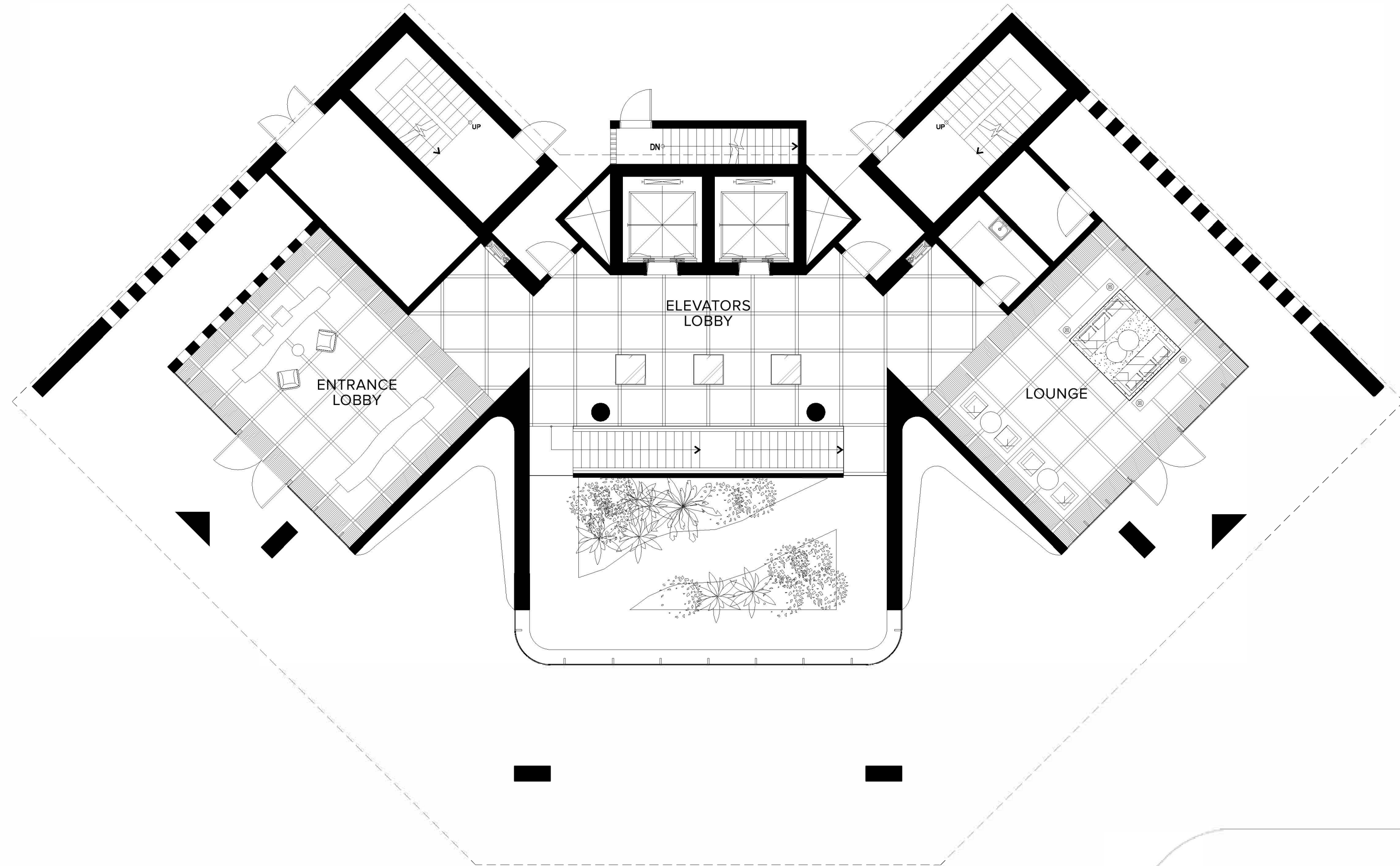


THE RITZ-CARLTON RESIDENCES

DUBAI, CREEKSIDE



Building Lobby



RESIDENCE LOBBY	70.0 SQ.M / 753.5 SQ.FT
ELEVATORS LOBBY & GALLERY	70.0 SQ.M / 753.5 SQ.FT
LIBRARY LOUNGE	90.0 SQ.M / 968.8 SQ.FT

RESIDENCE
DROP OFF

The Ritz-Carlton Residences, Dubai, Creekside are not owned, developed or sold by The Ritz-Carlton Hotel Company, L.L.C. or its affiliates ("Ritz-Carlton"). MAG of Life FZ-LLC uses The Ritz-Carlton marks under a license from Ritz-Carlton, which has not confirmed the accuracy of any of the statements or representations made herein.



All room sizes and floorplan measurements are approximate and may vary per unit. Floorplans and unit features are preliminary and proposed only. Developer reserves the right to modify, revise, change or withdraw any or all of same in its sole and absolute discretion and without prior notice. Depictions of furnishings, finishes, appliances, counters, soffits, floor coverings and other matters of detail, including, without limitation, items of finish and decoration are conceptual only and are not necessarily included in each Unit. Consult your Agreement and the Prospectus for items included with your Unit.



THE RITZ-CARLTON RESIDENCES

DUBAI, CREEKSIDE

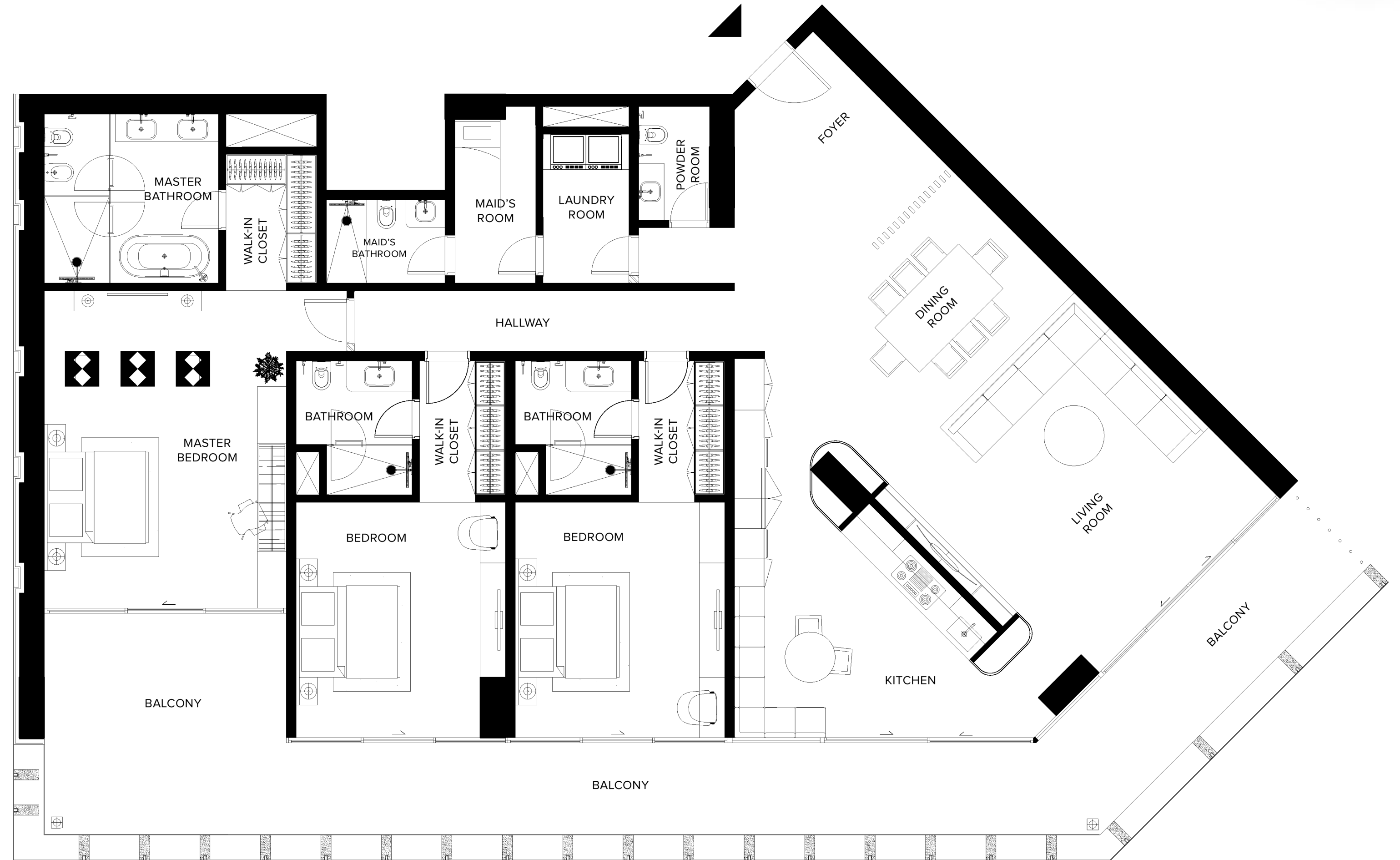


Three Bedroom

3 BEDROOM + MAID + 3.5 BATHROOMS



FLOOR(S)	3 RD TO 6 TH FLOOR
UNITS	301, 401, 501 and 601
INTERIOR	261.0 SQ.M / 2,810.0 SQ.FT
EXTERIOR	72.00 SQ.M / 775.0 SQ.FT
TOTAL AREA	333.0 SQ.M / 3,585.0 SQ.FT



The Ritz-Carlton Residences, Dubai, Creekside are not owned, developed or sold by The Ritz-Carlton Hotel Company, L.L.C. or its affiliates ("Ritz-Carlton"). MAG of Life FZ-LLC uses The Ritz-Carlton marks under a license from Ritz-Carlton, which has not confirmed the accuracy of any of the statements or representations made herein.



All room sizes and floorplan measurements are approximate and may vary per unit. Floorplans and unit features are preliminary and proposed only. Developer reserves the right to modify, revise, change or withdraw any or all of same in its sole and absolute discretion and without prior notice. Depictions of furnishings, finishes, appliances, counters, soffits, floor coverings and other matters of detail, including, without limitation, items of finish and decoration are conceptual only and are not necessarily included in each Unit. Consult your Agreement and the Prospectus for items included with your Unit.



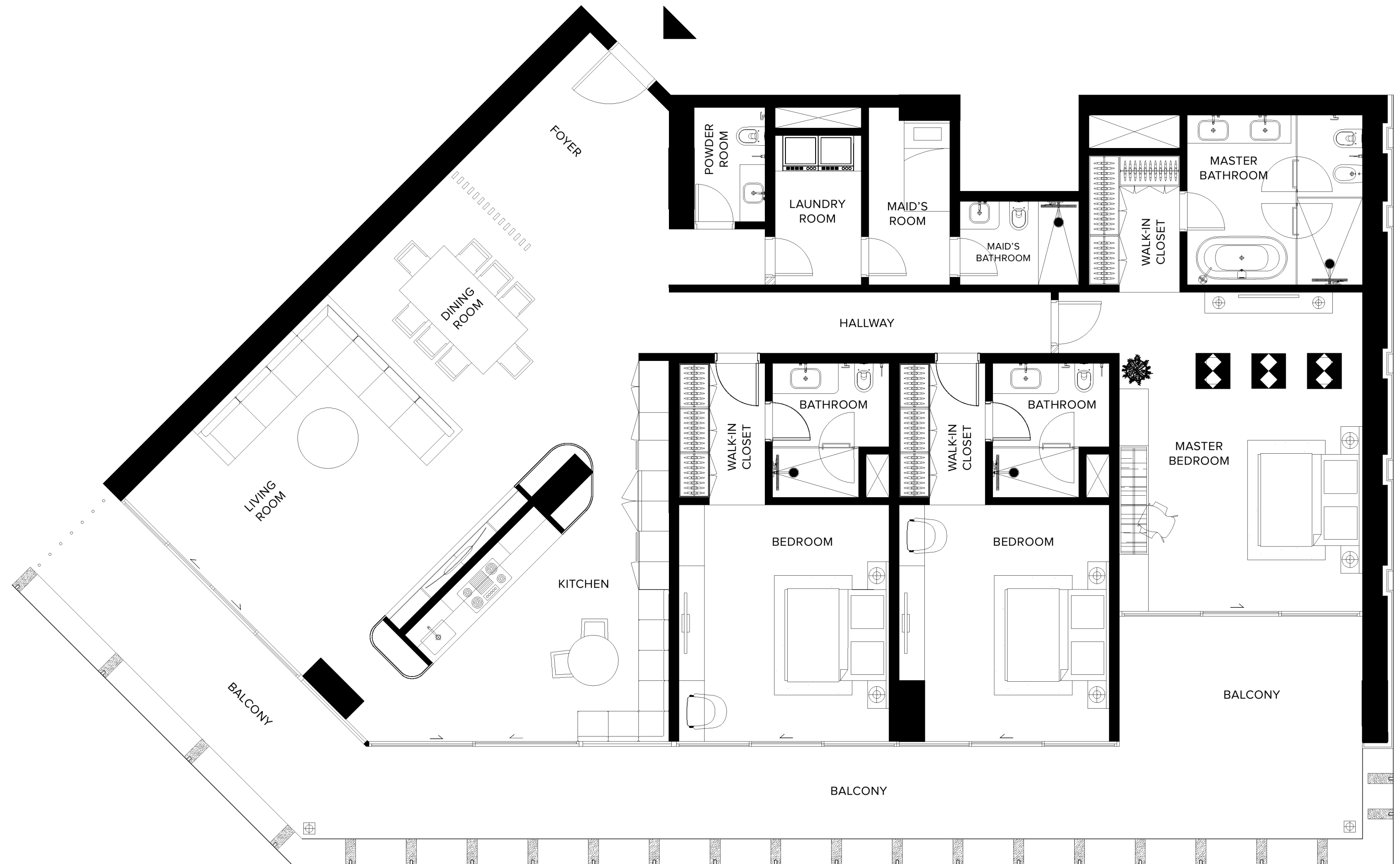
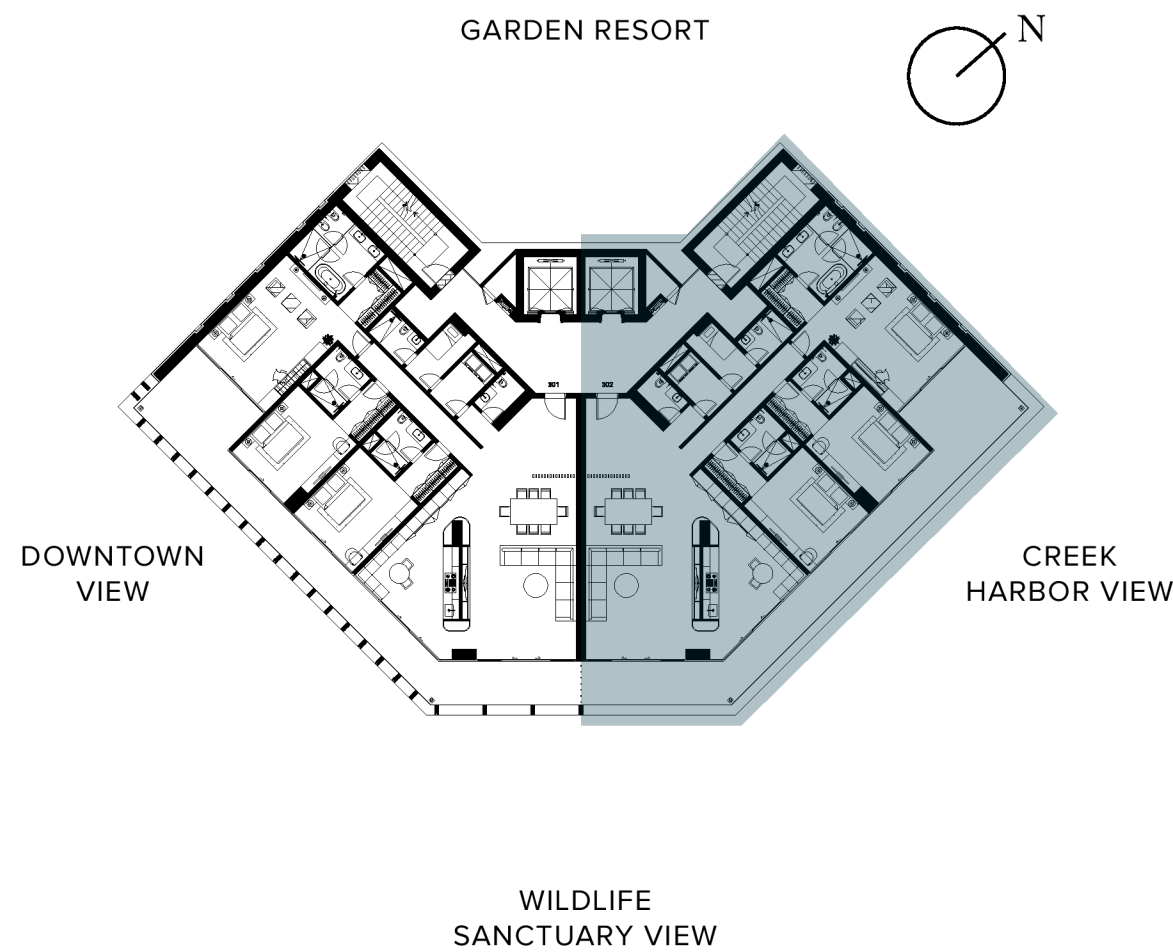
THE RITZ-CARLTON RESIDENCES

DUBAI, CREEKSIDE



Three Bedroom

3 BEDROOM + MAID + 3.5 BATHROOMS



FLOOR(S)	3 RD TO 6 TH FLOOR
UNITS	302, 402, 502 and 602
INTERIOR	261.0 SQ.M / 2,810.0 SQ.FT
EXTERIOR	72.00 SQ.M / 775.0 SQ.FT
TOTAL AREA	333.0 SQ.M / 3,585.0 SQ.FT

The Ritz-Carlton Residences, Dubai, Creekside are not owned, developed or sold by The Ritz-Carlton Hotel Company, L.L.C. or its affiliates ("Ritz-Carlton"). MAG of Life FZ-LLC uses The Ritz-Carlton marks under a license from Ritz-Carlton, which has not confirmed the accuracy of any of the statements or representations made herein.



All room sizes and floorplan measurements are approximate and may vary per unit. Floorplans and unit features are preliminary and proposed only. Developer reserves the right to modify, revise, change or withdraw any or all of same in its sole and absolute discretion and without prior notice. Depictions of furnishings, finishes, appliances, counters, soffits, floor coverings and other matters of detail, including, without limitation, items of finish and decoration are conceptual only and are not necessarily included in each Unit. Consult your Agreement and the Prospectus for items included with your Unit.



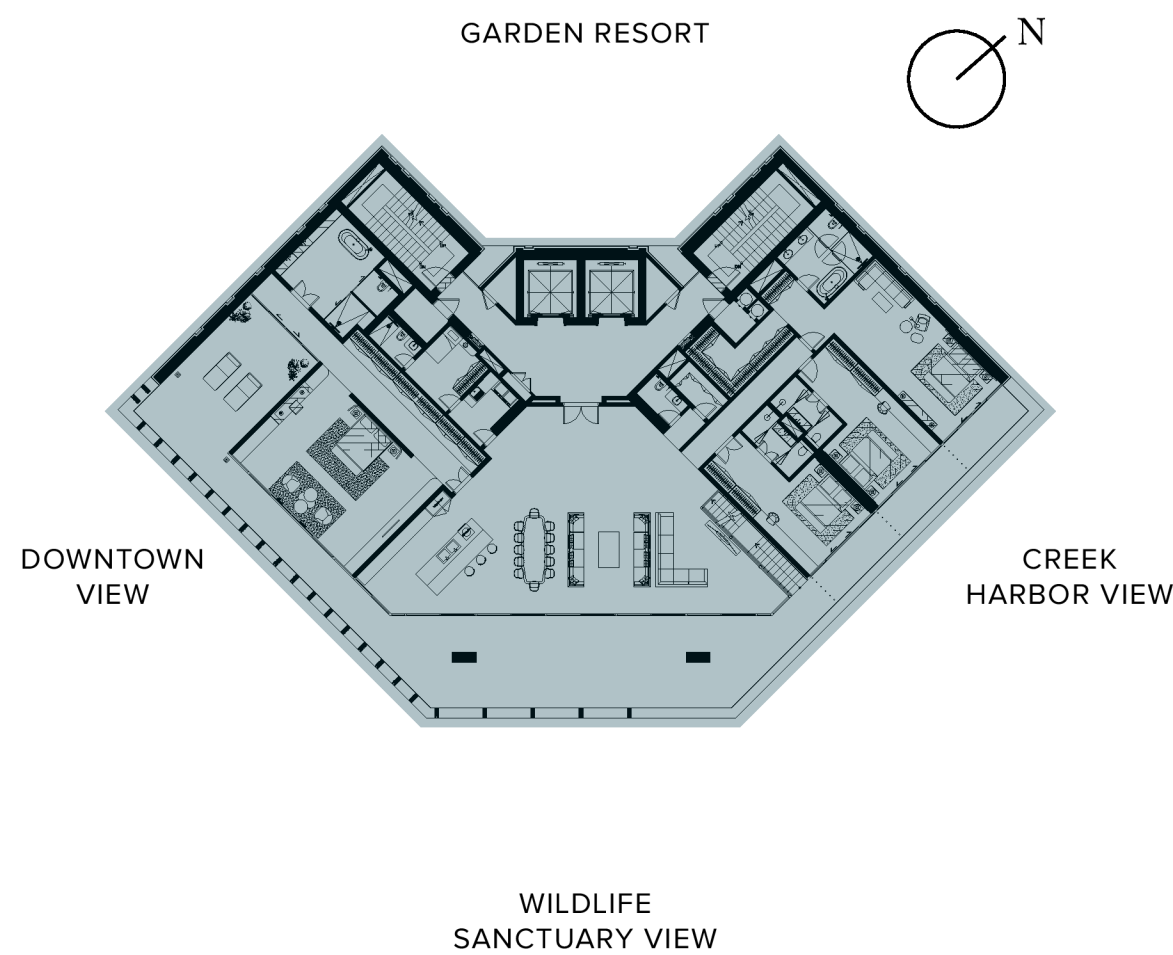
THE RITZ-CARLTON RESIDENCES

DUBAI, CREEKSIDE



Penthouse

4 BEDROOM + MAID + 4.5 BATHROOMS



FLOOR(S)	7 TH FLOOR - PENTHOUSE
UNITS	701
INTERIOR	473.8 SQ.M / 5,100.0 SQ.FT
EXTERIOR	187.7 SQ.M / 2,020.4 SQ.FT
TOTAL AREA	661.5 SQ.M / 7,120.4 SQ.FT

The Ritz-Carlton Residences, Dubai, Creekside are not owned, developed or sold by The Ritz-Carlton Hotel Company, L.L.C. or its affiliates ("Ritz-Carlton"). MAG of Life FZ-LLC uses The Ritz-Carlton marks under a license from Ritz-Carlton, which has not confirmed the accuracy of any of the statements or representations made herein.

MAG OF LIFE All room sizes and floorplan measurements are approximate and may vary per unit. Floorplans and unit features are preliminary and proposed only. Developer reserves the right to modify, revise, change or withdraw any or all of same in its sole and absolute discretion and without prior notice. Depictions of furnishings, finishes, appliances, counters, soffits, floor coverings and other matters of detail, including, without limitation, items of finish and decoration are conceptual only and are not necessarily included in each Unit. Consult your Agreement and the Prospectus for items included with your Unit.



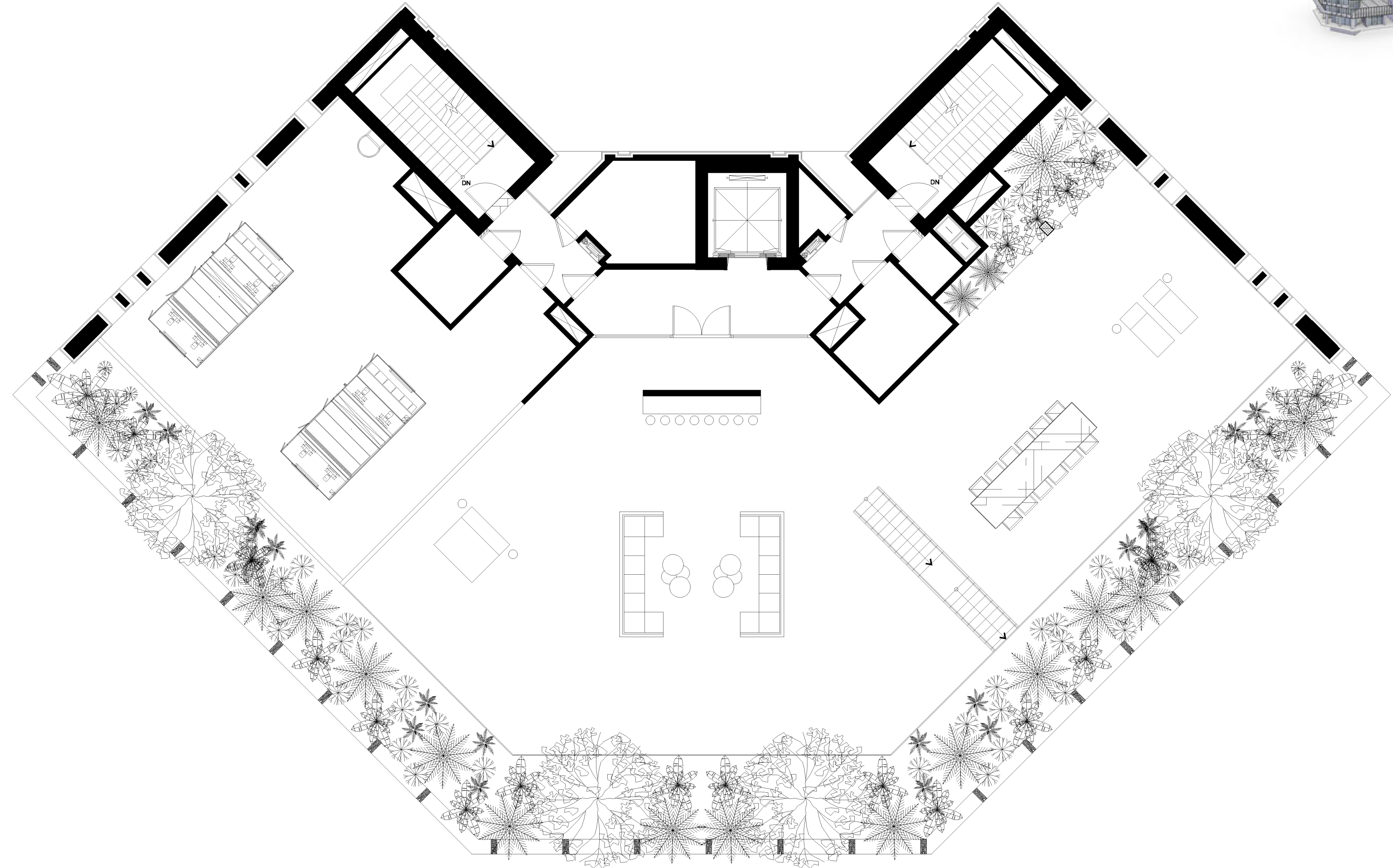
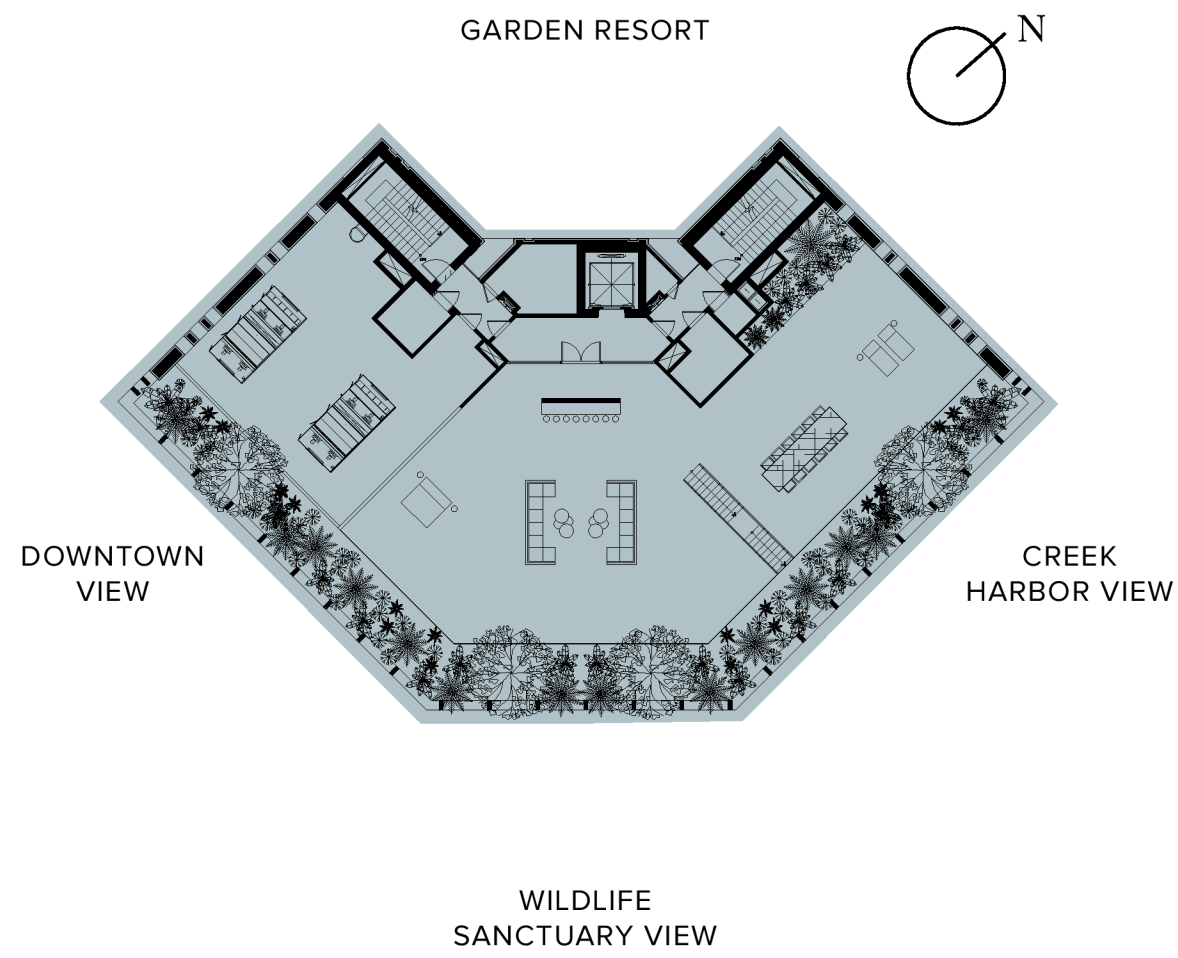
THE RITZ-CARLTON RESIDENCES

DUBAI, CREEKSIDE



Penthouse

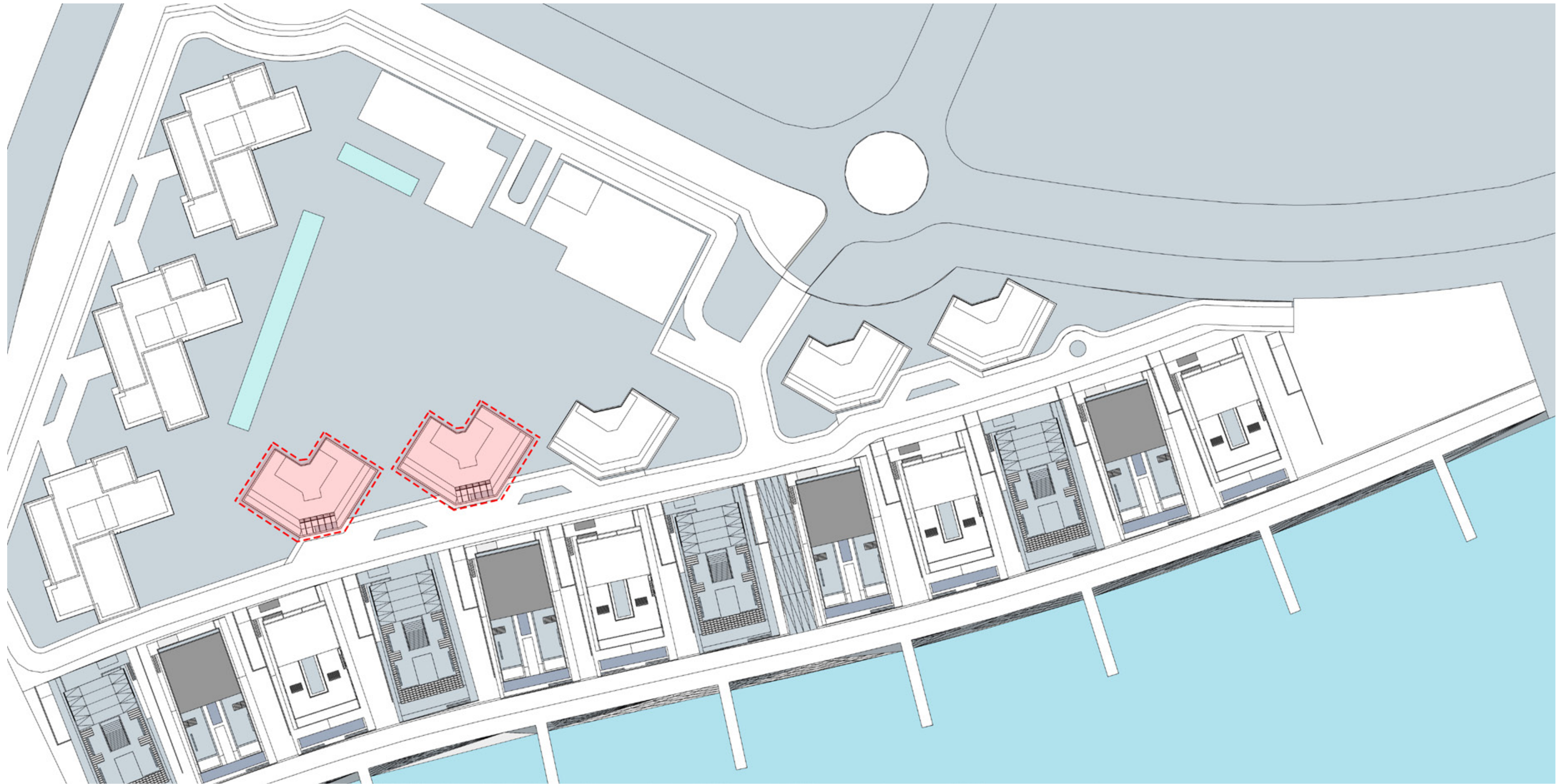
ROOF SKY GARDEN



FLOOR(S)	ROOF
EXTERIOR	357.0 SQ.M / 3,842.7 SQ.FT

The Ritz-Carlton Residences, Dubai, Creekside are not owned, developed or sold by The Ritz-Carlton Hotel Company, L.L.C. or its affiliates ("Ritz-Carlton"). MAG of Life FZ-LLC uses The Ritz-Carlton marks under a license from Ritz-Carlton, which has not confirmed the accuracy of any of the statements or representations made herein.

MAG OF LIFE All room sizes and floorplan measurements are approximate and may vary per unit. Floorplans and unit features are preliminary and proposed only. Developer reserves the right to modify, revise, change or withdraw any or all of same in its sole and absolute discretion and without prior notice. Depictions of furnishings, finishes, appliances, counters, soffits, floor coverings and other matters of detail, including, without limitation, items of finish and decoration are conceptual only and are not necessarily included in each Unit. Consult your Agreement and the Prospectus for items included with your Unit.



The Ritz-Carlton Residences, Dubai, Creekside are not owned, developed or sold by The Ritz-Carlton Hotel Company, L.L.C. or its affiliates ("Ritz-Carlton"). MAG of Life FZ-LLC uses The Ritz-Carlton marks under a license from Ritz-Carlton, which has not confirmed the accuracy of any of the statements or representations made herein.

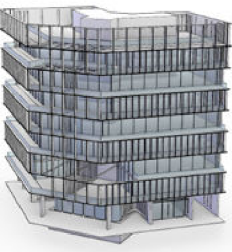


All room sizes and floorplan measurements are approximate and may vary per unit. Floorplans and unit features are preliminary and proposed only. Developer reserves the right to modify, revise, change or withdraw any or all of same in its sole and absolute discretion and without prior notice. Depictions of furnishings, finishes, appliances, counters, soffits, floor coverings and other matters of detail, including, without limitation, items of finish and decoration are conceptual only and are not necessarily included in each Unit. Consult your Agreement and the Prospectus for items included with your Unit.



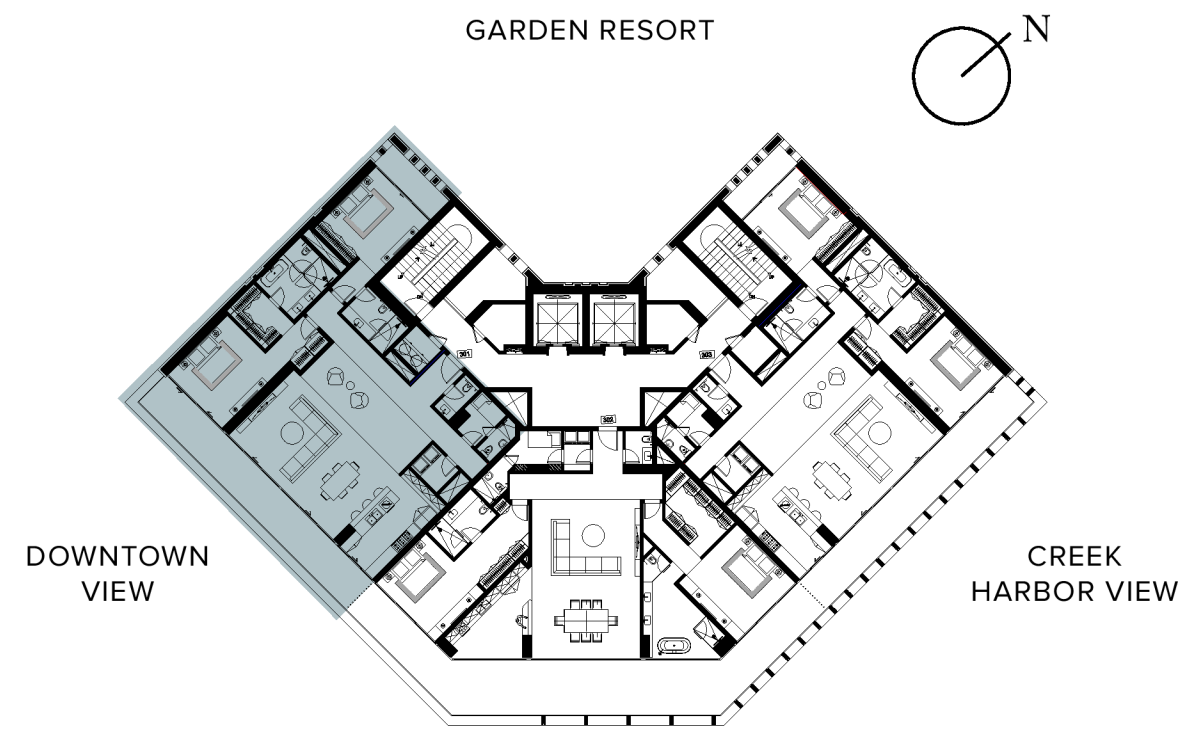
THE RITZ-CARLTON RESIDENCES

DUBAI, CREEKSIDE

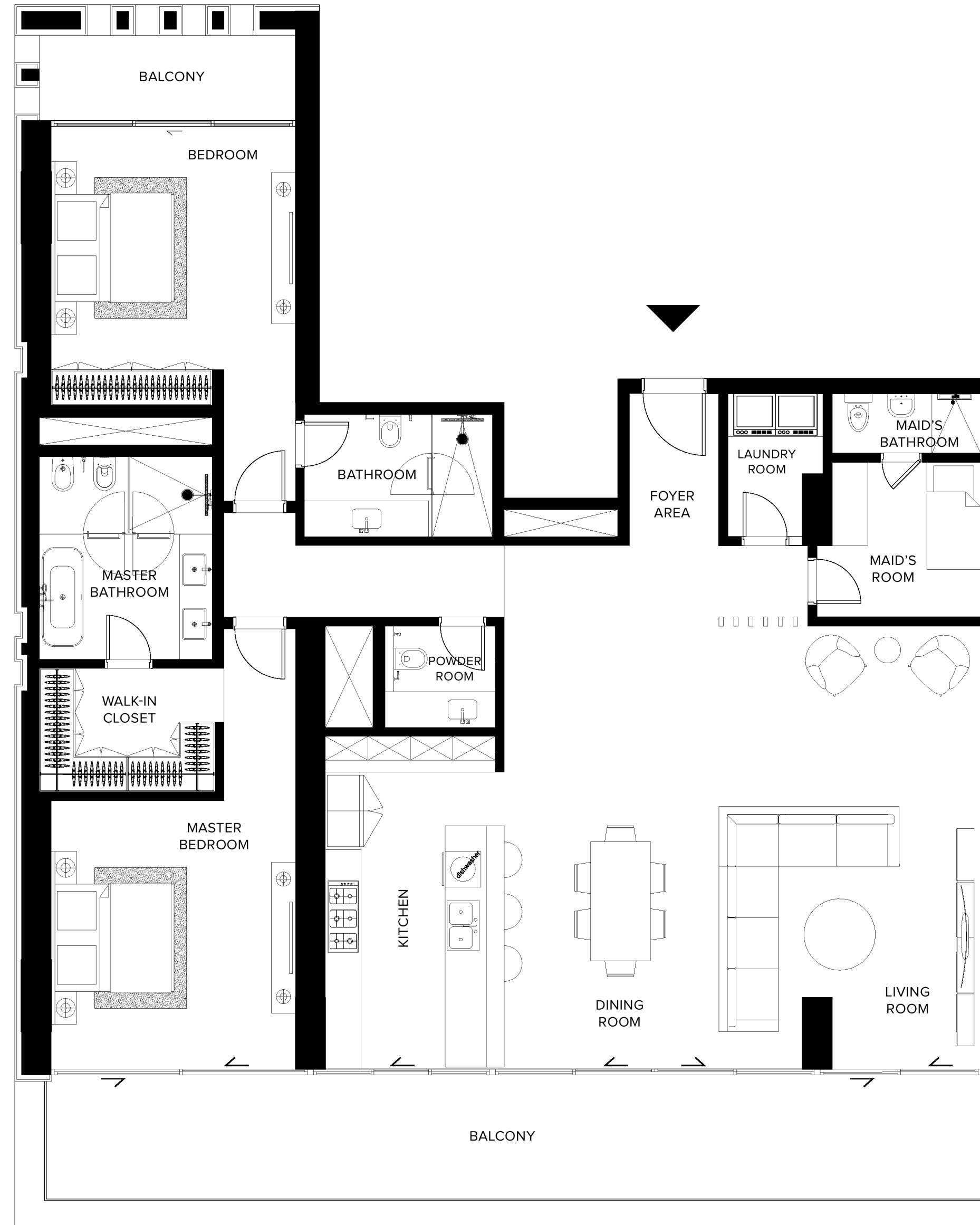


Two Bedroom

2 BEDROOM + MAID + 2.5 BATHROOMS



FLOOR(S)	3 RD TO 6 TH FLOOR
UNITS	301, 401, 501 and 601
INTERIOR	200.0 SQ.M / 2,152.8 SQ.FT
EXTERIOR	32.1 SQ.M / 345.5 SQ.FT
TOTAL AREA	232.1 SQ.M / 2,498.3 SQ.FT



The Ritz-Carlton Residences, Dubai, Creekside are not owned, developed or sold by The Ritz-Carlton Hotel Company, L.L.C. or its affiliates ("Ritz-Carlton"). MAG of Life FZ-LLC uses The Ritz-Carlton marks under a license from Ritz-Carlton, which has not confirmed the accuracy of any of the statements or representations made herein.



All room sizes and floorplan measurements are approximate and may vary per unit. Floorplans and unit features are preliminary and proposed only. Developer reserves the right to modify, revise, change or withdraw any or all of same in its sole and absolute discretion and without prior notice. Depictions of furnishings, finishes, appliances, counters, soffits, floor coverings and other matters of detail, including, without limitation, items of finish and decoration are conceptual only and are not necessarily included in each Unit. Consult your Agreement and the Prospectus for items included with your Unit.



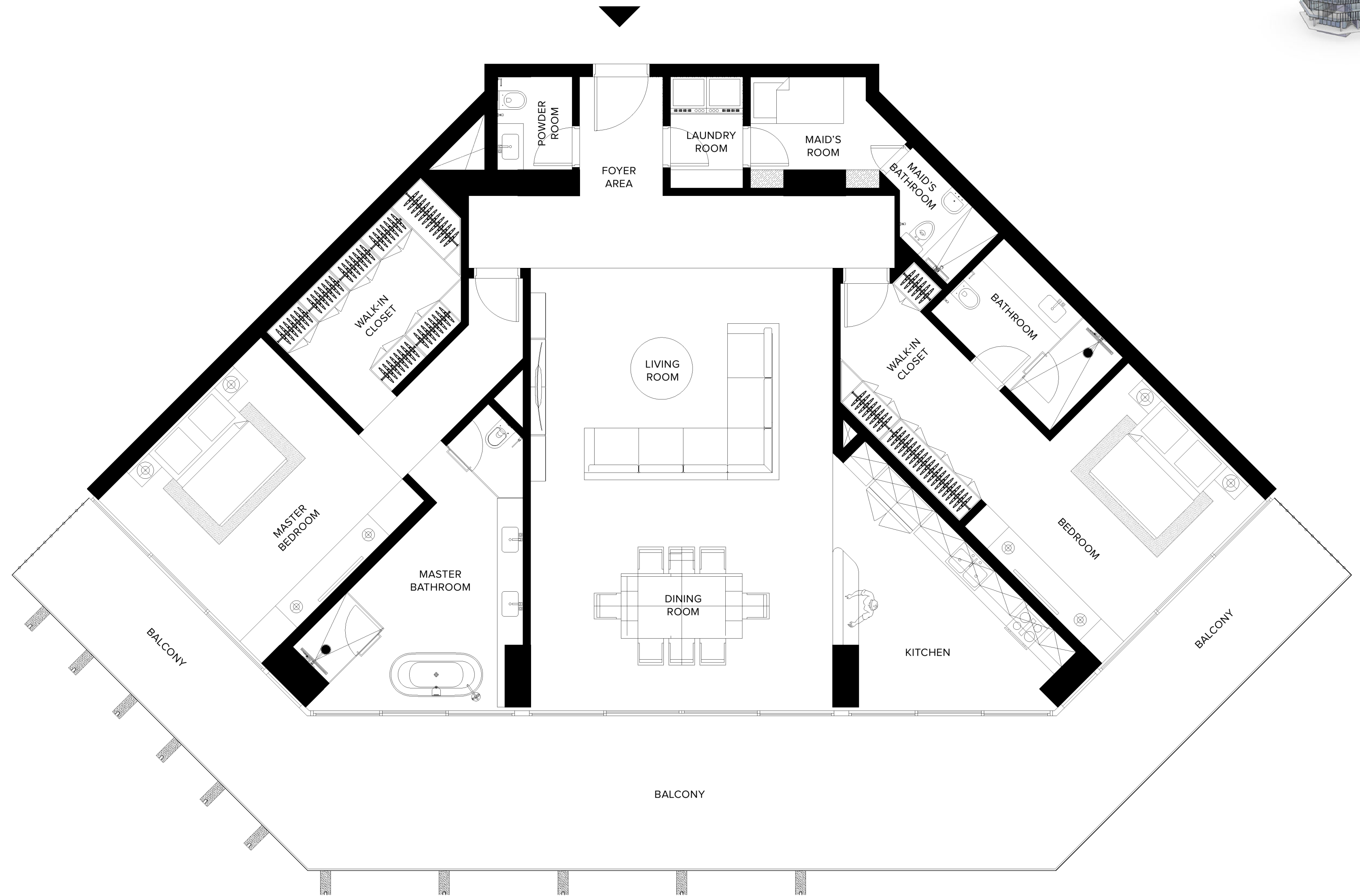
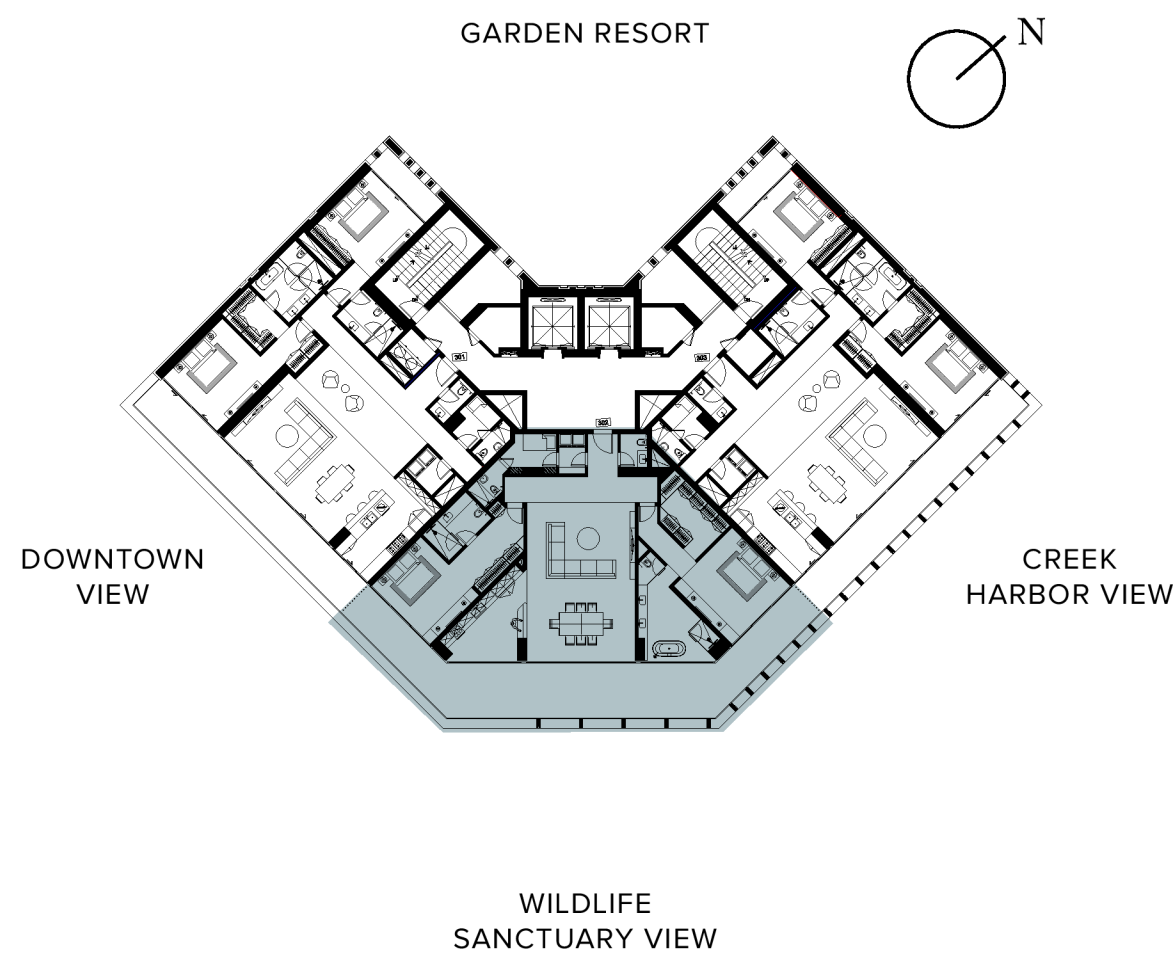
THE RITZ-CARLTON RESIDENCES

DUBAI, CREEKSIDE



Two Bedroom

2 BEDROOM + MAID + 2.5 BATHROOMS



FLOOR(S)	3 RD TO 6 TH FLOOR
UNITS	302, 402, 502 and 602
INTERIOR	200.0 SQ.M / 2,152.8 SQ.FT
EXTERIOR	72.5 SQ.M / 780.4 SQ.FT
TOTAL AREA	272.5 SQ.M / 2,933.2 SQ.FT

The Ritz-Carlton Residences, Dubai, Creekside are not owned, developed or sold by The Ritz-Carlton Hotel Company, L.L.C. or its affiliates ("Ritz-Carlton"). MAG of Life FZ-LLC uses The Ritz-Carlton marks under a license from Ritz-Carlton, which has not confirmed the accuracy of any of the statements or representations made herein.



All room sizes and floorplan measurements are approximate and may vary per unit. Floorplans and unit features are preliminary and proposed only. Developer reserves the right to modify, revise, change or withdraw any or all of same in its sole and absolute discretion and without prior notice. Depictions of furnishings, finishes, appliances, counters, soffits, floor coverings and other matters of detail, including, without limitation, items of finish and decoration are conceptual only and are not necessarily included in each Unit. Consult your Agreement and the Prospectus for items included with your Unit.



THE RITZ-CARLTON RESIDENCES

DUBAI, CREEKSIDE



Two Bedroom

2 BEDROOM + MAID + 2.5 BATHROOMS



FLOOR(S)	3 RD TO 6 TH FLOOR
UNITS	303, 403, 503 and 603
INTERIOR	200.0 SQ.M / 2,152.8 SQ.FT
EXTERIOR	32.1 SQ.M / 345.5 SQ.FT
TOTAL AREA	232.1 SQ.M / 2,498.3 SQ.FT



The Ritz-Carlton Residences, Dubai, Creekside are not owned, developed or sold by The Ritz-Carlton Hotel Company, L.L.C. or its affiliates ("Ritz-Carlton"). MAG of Life FZ-LLC uses The Ritz-Carlton marks under a license from Ritz-Carlton, which has not confirmed the accuracy of any of the statements or representations made herein.



All room sizes and floorplan measurements are approximate and may vary per unit. Floorplans and unit features are preliminary and proposed only. Developer reserves the right to modify, revise, change or withdraw any or all of same in its sole and absolute discretion and without prior notice. Depictions of furnishings, finishes, appliances, counters, soffits, floor coverings and other matters of detail, including, without limitation, items of finish and decoration are conceptual only and are not necessarily included in each Unit. Consult your Agreement and the Prospectus for items included with your Unit.



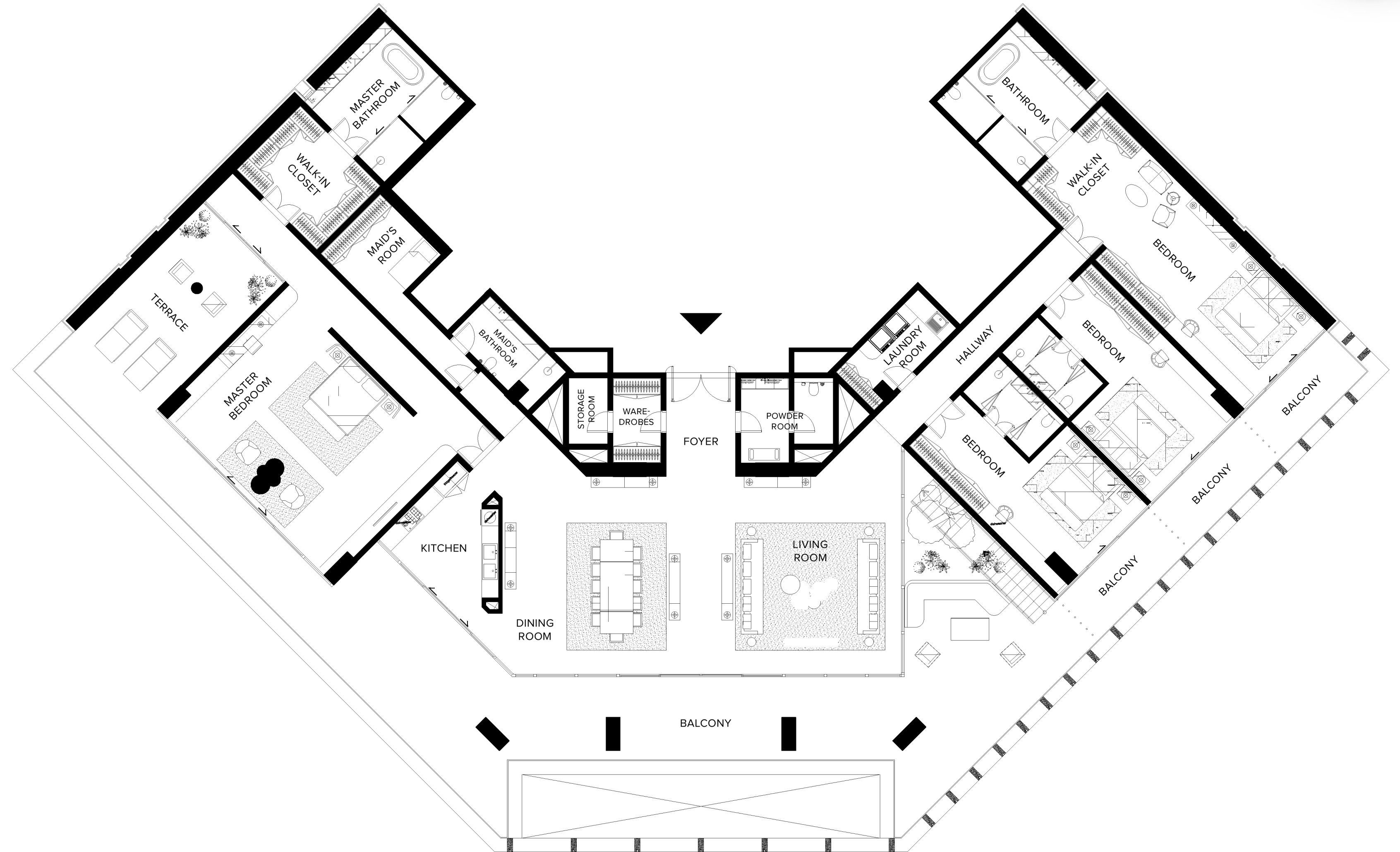
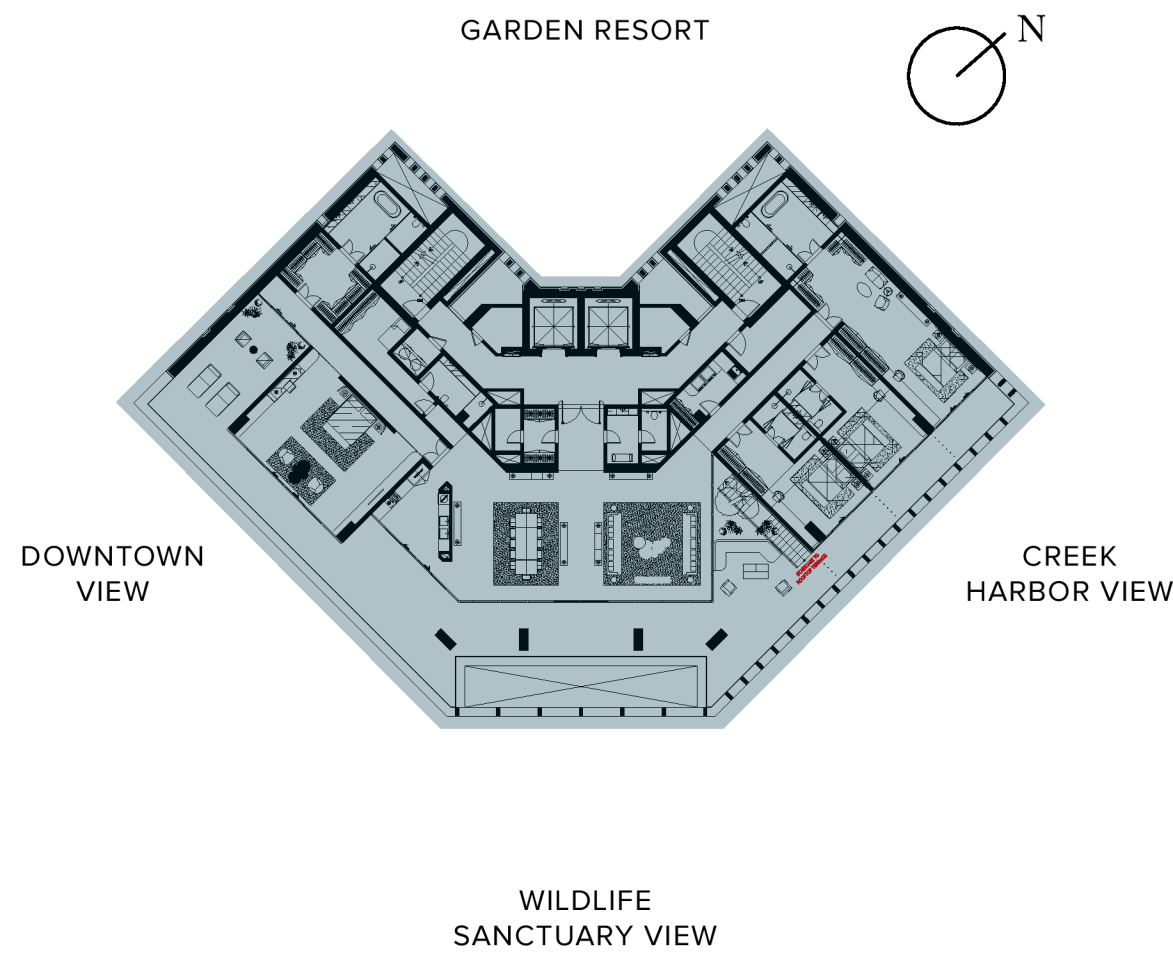
THE RITZ-CARLTON RESIDENCES

DUBAI, CREEKSIDE



Penthouse

4 BEDROOM + MAID + 4.5 BATHROOMS



FLOOR(S)	7 TH FLOOR - PENTHOUSE
UNITS	701
INTERIOR	494.4 SQ.M / 5,321.7 SQ.FT
EXTERIOR	219.6 SQ.M / 2,364.0 SQ.FT
TOTAL AREA	714.0 SQ.M / 7,685.7 SQ.FT

The Ritz-Carlton Residences, Dubai, Creekside are not owned, developed or sold by The Ritz-Carlton Hotel Company, L.L.C. or its affiliates ("Ritz-Carlton"). MAG of Life FZ-LLC uses The Ritz-Carlton marks under a license from Ritz-Carlton, which has not confirmed the accuracy of any of the statements or representations made herein.

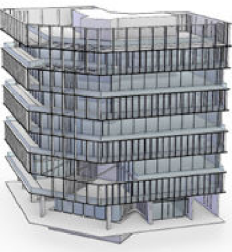


All room sizes and floorplan measurements are approximate and may vary per unit. Floorplans and unit features are preliminary and proposed only. Developer reserves the right to modify, revise, change or withdraw any or all of same in its sole and absolute discretion and without prior notice. Depictions of furnishings, finishes, appliances, counters, soffits, floor coverings and other matters of detail, including, without limitation, items of finish and decoration are conceptual only and are not necessarily included in each Unit. Consult your Agreement and the Prospectus for items included with your Unit.



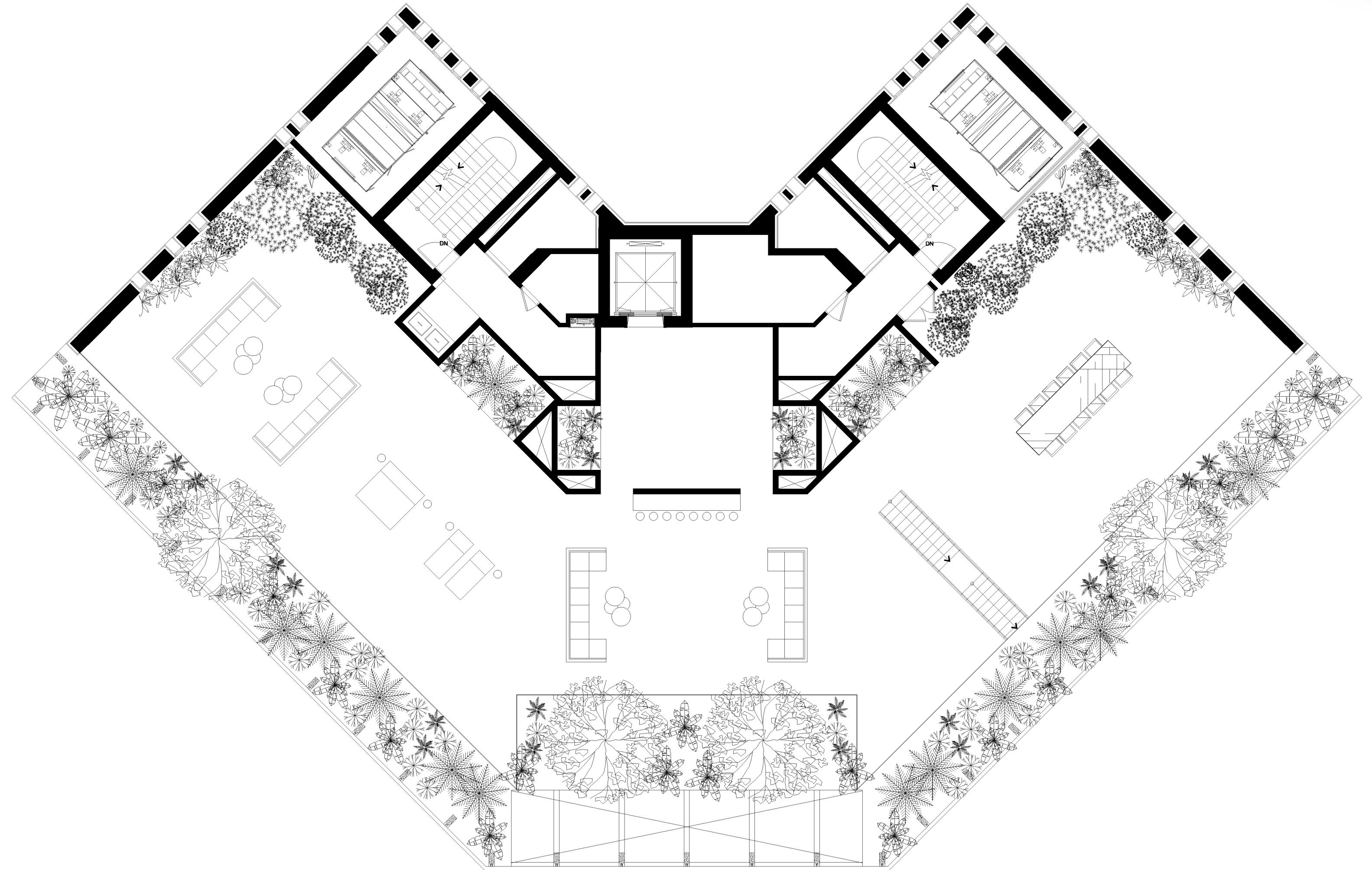
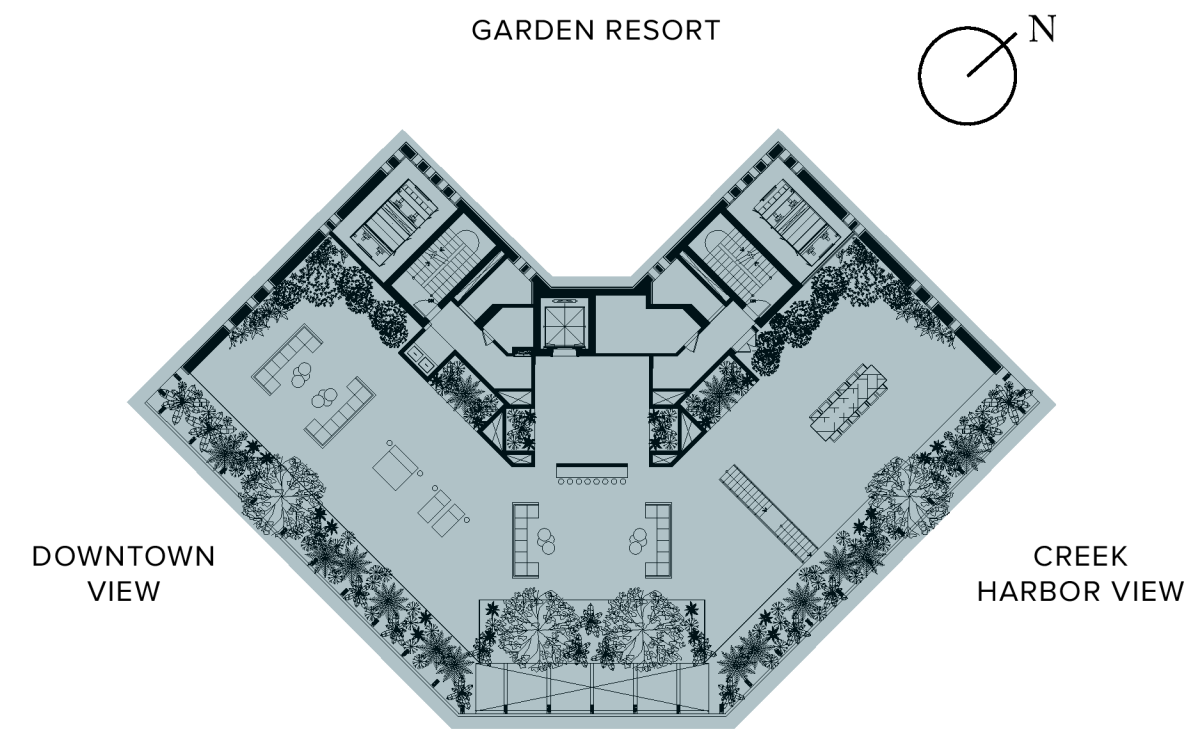
THE RITZ-CARLTON RESIDENCES

DUBAI, CREEKSIDE



Penthouse

ROOF SKY GARDEN



FLOOR(S)	ROOF
EXTERIOR	575.0 SQ.M / 6,189.2 SQ.FT

The Ritz-Carlton Residences, Dubai, Creekside are not owned, developed or sold by The Ritz-Carlton Hotel Company, L.L.C. or its affiliates ("Ritz-Carlton"). MAG of Life FZ-LLC uses The Ritz-Carlton marks under a license from Ritz-Carlton, which has not confirmed the accuracy of any of the statements or representations made herein.



All room sizes and floorplan measurements are approximate and may vary per unit. Floorplans and unit features are preliminary and proposed only. Developer reserves the right to modify, revise, change or withdraw any or all of same in its sole and absolute discretion and without prior notice. Depictions of furnishings, finishes, appliances, counters, soffits, floor coverings and other matters of detail, including, without limitation, items of finish and decoration are conceptual only and are not necessarily included in each Unit. Consult your Agreement and the Prospectus for items included with your Unit.

Amenities And Facilities

- Luxury Wellness Hotel
- Private Boat Dock For Up To 120ft. Yachts
- Eight Sustainable and Organic-Focused Retail Spaces, Including Weekend Farmers' Market
- 24/7 Secured Private Parking with Valet
- Gated Community with Unique Views on the Wildlife Sanctuary
- Beach Access to The Ritz-Carlton Jumeirah Hotel
- Unique Access to One of Dubai's Most Recognized Private School: Swiss International Scientific School

- Wellness Center
Rejuvenation and Detox Facilities
Full Floor of Fitness Gear
Multiple Yoga Rooms
Indoor Pools

- Members' Only Resort Clubhouse
Over Three Michelin-Star Fusion,
& Healthy-Cuisine Restaurants

- The Residences Indoor & Outdoor
Business Club Facilities
Members' Only Welcoming Lounge Area
Breakfast & All-Day Dining Restaurant
Health Bar
Board Room / Meeting Room
Event / Party Hall
Cinema / Media / Games Room
Indoor Pools

- The Residences Indoor & Outdoor Kids Club
Multi-Purpose Rooms: Party, Classroom, Yoga,...
Technology Rooms: Science, Coding,...
Play Zones: Lego, Climbing, Baby Play
Kitchen For Cooking Classes
Organic Plants Garden

- Residential Neighborhood Park
Adults Residential Pool, and its Deck
Kids Large Outdoor Park & Splash Pool
Yoga Platform

Residential Services

Included In Your Service Charges

- Move-In Coordination
- Concierge Service
- Butler/Doorman/Porter Services
- Valet Parking 24/7 in Exclusive Basement Parking for Residents & Visitors
- Airline / Private Air Reservations
- Airport / Ground Transportation Arrangements
- Automobile Rental Reservations
- Limousine Reservations, incl. Rolls-Royce
- Business Center Services
- Coordinate Delivery Services
- Hotel Reservations
- Reserving Golf Tee Times
- Theater & Entertainment Information
- Ordering Floral Arrangements
- City Activity Arrangements
- Common Area Housekeeping
- Loss Prevention



**THE RITZ-CARLTON
RESIDENCES**

DUBAI, CREEKSIDE

À La Carte Services

General

- Pre-arrival Grocery Shopping
- Laundry/Dry Cleaning
- Alterations Services
- Car Washing/Detailing
- Equipment Rental & Arrangements
- Secretarial Services
- Function/Event Planning
- Mail Packing & Shipping
- Plant Care Maintenance
- Translation Services
- Nanny/Child Care Services
- Pet Grooming
- Vacant Home Care Inspections
- Owner Absentee Program
- Sommelier
- Notary Public Service

Academics

- Swiss International Scientific School
- Bilingual, Private Boarding School
- Exclusive Scholarship
- Preferential Rate
- Guaranteed Entry for your children

Lifestyle

- Exclusive Access to Resort Exotic Car Fleet
- Exclusive Access to Resort Private Yachts
- Preferential Rate on Resort Hotel Stays for your guests
- Michelin-Star Fine Dining
- Healthy-Cuisine Restaurants
- In-Residence Dining and Catering by the Chef himself

Engineering And Housekeeping

Day-to-Day Maintenance Coordination by The Ritz-Carlton

- Furniture Assembly
- Bulk/Move-in Trash Removal
- Picture Hanging
- Minor Electrical & Plumbing
- HVAC Filter Vacuum & Mop Floors
- Dust Interior
- Strip Beds & Change Sheets
- Clean Patio

The Concierge and Management staff can assist you with the services listed on this page. Please note that some of these services are À La Carte Services and performed by third parties. Conditions and charges apply to À La Carte Services.

Collaborations & Experiences

OWNER AND DEVELOPER



MAG of Life, the Wellness Real Estate division of MAG Group and driving force behind the KETURAH Resort. With current project estimates of over US\$ 1 billion, the company focuses on developing and delivering high-quality projects that provide long-term benefits to both investors and customers. MAG of Life, spearheads the MAG Group's drive to the forefront of the real estate industry thanks to projects imbued with the company's philosophy of innovation and continuous improvement.

MAG of Life has always been inspired by the art of living well. Talal M. Al Gaddah, the founder and visionary behind the company has created a sanctuary of wellness and luxury, not in some far away sacred retreat, but rather in the city, and even closer, in your home where you can be nourished every day.

PROPERTY MANAGEMENT

THE RITZ-CARLTON

The Ritz-Carlton has always been a name synonymous with distinction that continues to redefine luxury, through an incomparable commitment to the finest personal services and devotion to the standards that have made them the top luxury brand in the world.

Residence owners enjoy the same Legendary services as The Ritz-Carlton hotel guests and the added value of a dedicated Residence staff and private, owners-only amenities.

OUR COMMITMENT

Our primary focus is health, wellness and happiness since without it, one cannot enjoy the richness of life and vitality. As part of the innovative program, specific wellness features and technologies focus on what you breathe, what you see, what you consume and how you feel, to create an environment that is uniquely yours, yet optimised for health and wellbeing. This combined with a mindful approach to crafted quality of design and construction in pursuit of excellence only seen before in private palaces.

THE ARCHITECT

AMAR SABEH

Acclaimed French designer, curator and architect Amar Sabeh renowned for his creativity is a master of interpreting luxury in unique ways and has been instrumental in achieving the vision and completion of The Ritz Carlton Residences, Dubai, Creekside.

For The Residences, he has translated this spectacular space into breath-taking interiors and seamless design and wellness features that are still effortlessly human. Here, nature does not end, inside or out. The architecture and interior design of The Residences exude timeless modernity based on grand, elegant and light-filled spaces complimented by bespoke customized designer furniture.

HEALTH & WELLNESS



Delos™ helps create spaces that actively contribute to human health, performance and well-being by marrying the best innovations in technology, health, science, and real estate. Combining the vision and philosophies of its parent companies, MAG of Life aims to provide Dubai a platform to improve human health and wellbeing by creating buildings that are developed with people's health and wellness at the centre of their design, supported by programming, aesthetics, consultation, research, and an array of innovative solutions and technologies.

Spaces that promote health, performance and wellbeing

THE CONTRACTOR



DCC is a leading turnkey construction company building world-class luxury residential, commercial, mixed-use, hospitality and leisure complexes. Established in Dubai in 1962 and specialized in high-quality construction.

DCC has raised the bar in construction expertise and excellence in the Middle East. For decades, discerning developers and leading architects have turned to DCC to help bring their visions to life and environments into vehicles for health, wellbeing, performance, and resilience.



THE RITZ-CARLTON RESIDENCES

DUBAI, CREEKSIDE



*Click or Scan QR Code
for location on maps*

The Ritz-Carlton Residences, Dubai, Creekside
Sales Gallery, Podium Level
Gate Village 11, Dubai International Financial Centre (DIFC), Dubai

www.theresidencesdubaicreek.com
info@theresidencesdubaicreek.com

The Ritz-Carlton Residences, Dubai, Creekside are not owned, developed or sold by The Ritz-Carlton Hotel Company, L.L.C. or its affiliates ("Ritz-Carlton"). MAG of Life FZ-LLC uses The Ritz-Carlton marks under a license from Ritz-Carlton, which has not confirmed the accuracy of any of the statements or representations made herein.