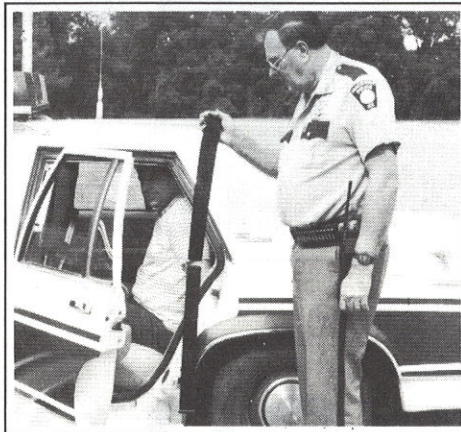
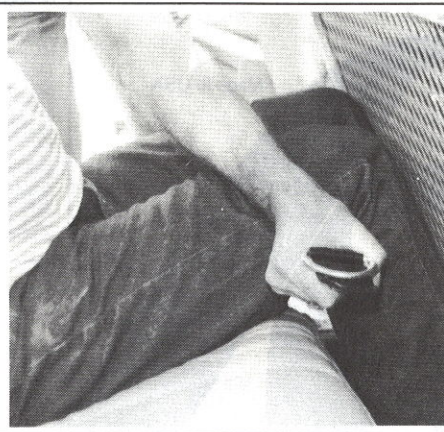


LEG Restraint LR-2

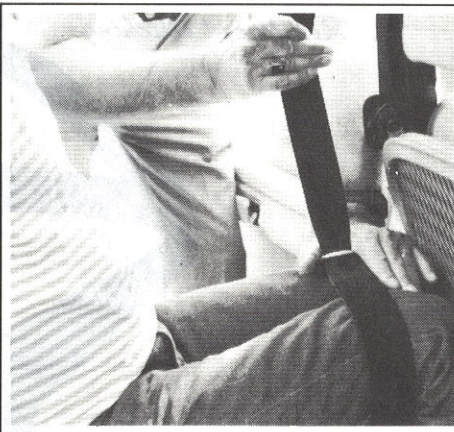
The LR-2, a safe and effective means of restraining a prisoners legs, is made of high strength nylon and solid steel hardware. It was designed to prevent a common problem that occurs with an unrestrained prisoner. A prisoners unrestrained legs can result in personal injury, broken vehicle windows, or damaged door frames. Applied in seconds, the LR-2 safely restricts the prisoners leg movement, decreasing the risk of injury to the officer and/or the prisoner.



With prisoner in vehicle (hands cuffed behind back) hold the LR-2 as shown with Velcro® side out, door belt down.



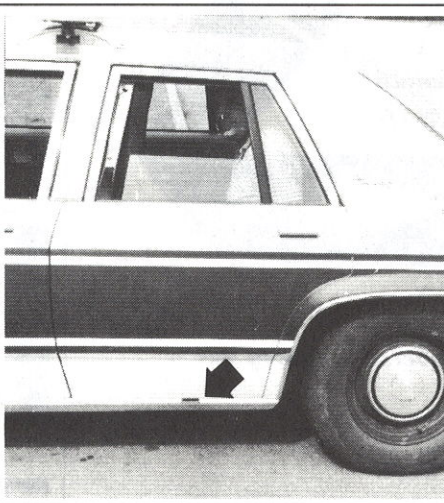
Place leg belt under legs as shown.



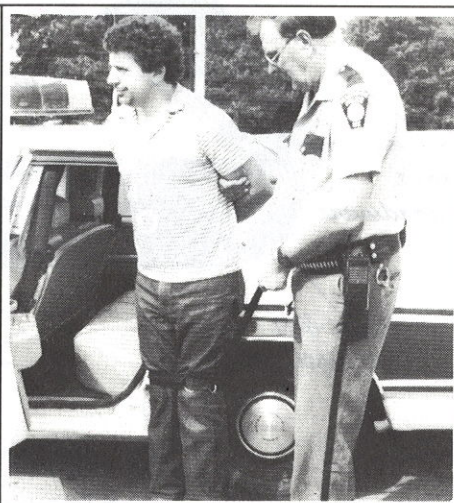
With "D" ring towards you, wrap belt around legs just above knees and place free end of belt through "D" ring. Pull to desired tightness and secure Velcro®.



Pull door belt toward door and place belt end labeled "this end out door", over rocker panel.



Close door on Belt.
To prevent any injury to the prisoner, the rocker panel bracket should be pulled securely to the door seam and **NEVER** be allowed to hang freely.



The LR-2 can also be used to prevent escape or injury while escorting the prisoner outside the vehicle.

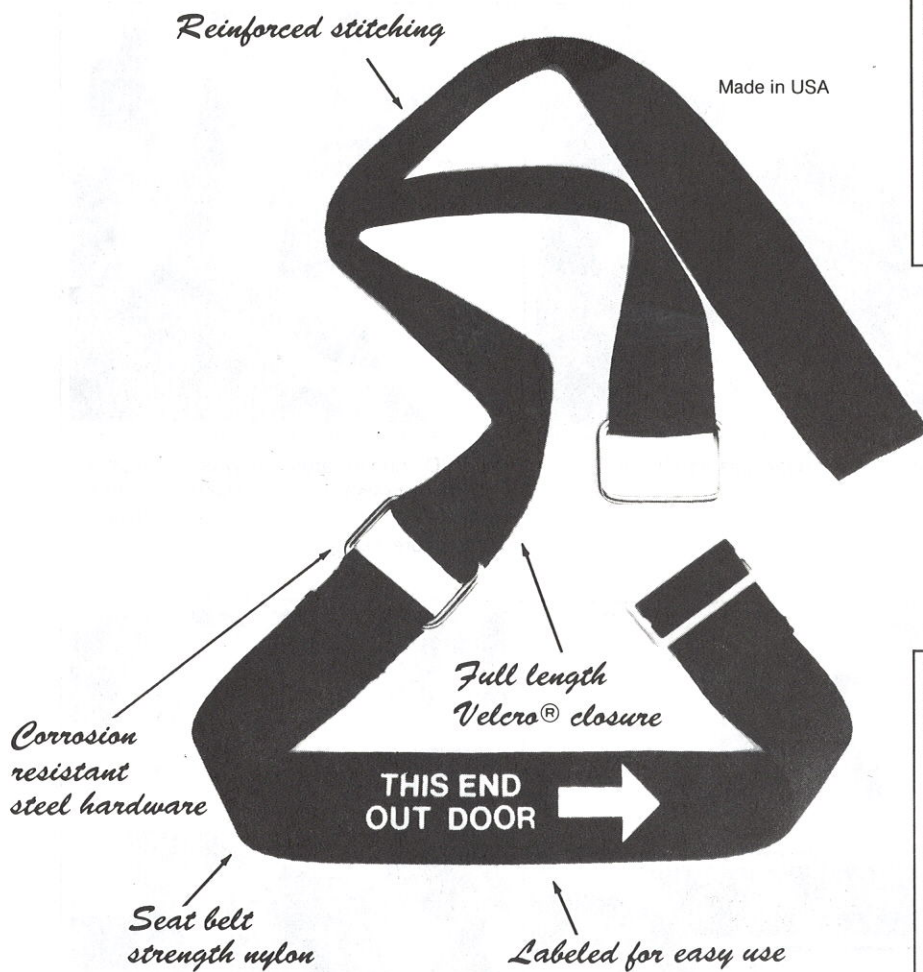
New York Police Supply, Inc.

1460 Ridge Road East • Rochester, NY 14621

1(800)262-2832

LEG Restraint LR-2

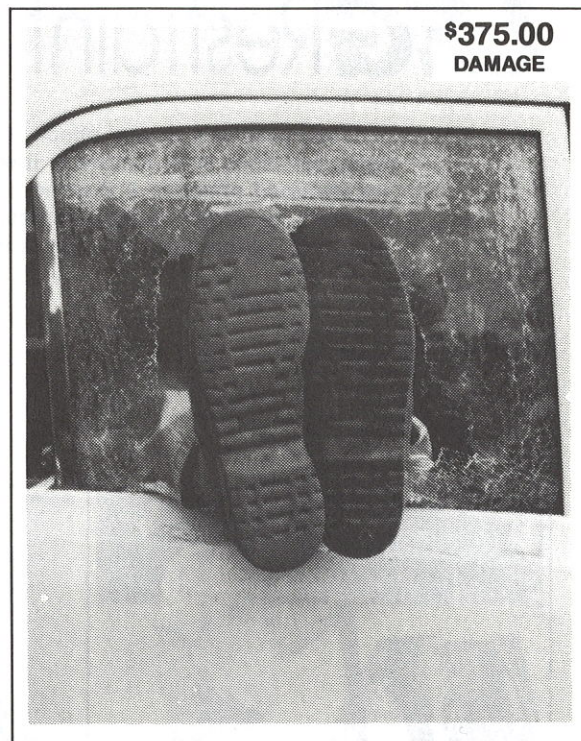
Compare Features & Quality



EFFECTIVE

- Easy to use
- Helps prevent injury to officer and prisoner
- Helps prevent vehicle damage

NEW YORK POLICE SUPPLY, INC.
1460 RIDGE ROAD EAST
ROCHESTER, NEW YORK 14621
(800)262-2832



OR

