

The background is a high-angle, night-time photograph of a city skyline, featuring prominent skyscrapers like the Petronas Towers. The image is overlaid with a complex digital network of glowing lines in blue, purple, and pink, with small dots at the end of the lines, suggesting a data or communication network. A large, semi-transparent blue arc is positioned in the upper right quadrant of the image.

# PRODUCT QUICK GUIDE CCTV SOLUTION PRODUCTS



# DEEP LEARNING

Deep Learning is the new buzzword in science and technology.

A technology with innumerable applications, Deep Learning is beginning to influence many aspects of our lives. When it comes to the field of video & image analytics, Deep Learning applications have grown rapidly in recent years, benefiting from sophisticated algorithms based on neural networks. Now, Hikvision's DeepinView Series Cameras and DeepinMind Series NVRs and Servers will lead the way in this new world of security technology by making invisible intelligence visible for users, and then putting that intelligence to good use.

And what can Hikvision's Deep Learning products do? Facial Detection is only the beginning. With analytics that take business solutions into the next century, and with automated alarm accuracy above 90%, this technology is a step above and beyond video security as we know it.

Hikvision's Deep Learning technology filters insignificant objects and movements in a scene that would trigger conventional alarm systems. Vehicle data gets recorded and shapes the database to perform numerous security functions. People Counting systems give businesses an edge in marketing and conversion rates.

Across the board, Hikvision's Deep Learning Solutions are adding value on multiple levels – today and tomorrow.



Facial Recognition



Vehicle Identification



Human & Vehicle  
Classification (AcuSense)



People Counting



Hard Hat Detection



More



# ULTRA-LOW LIGHT

## DarkFighter & DarkFighterX

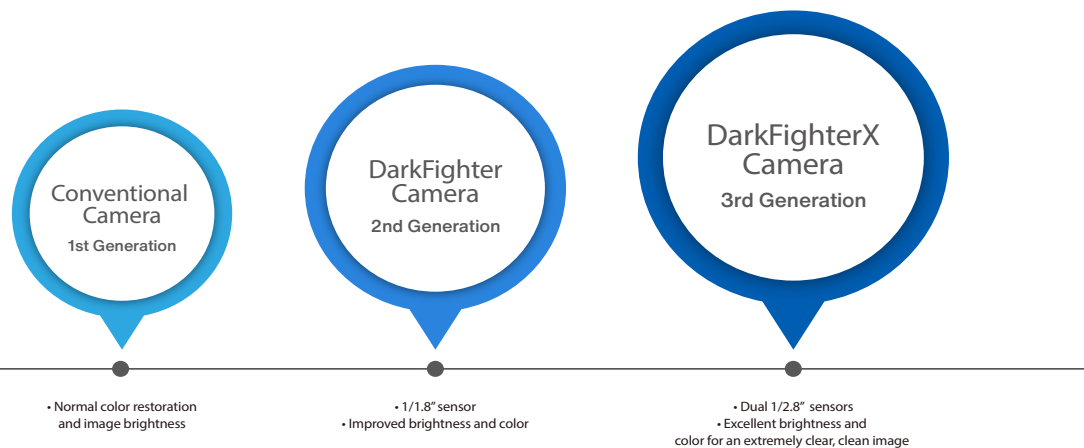
With the deepening of security awareness and the building boom of safe cities, high-quality video security has become a basic requirement. Since night hours make up almost half of the security recording, and since most crime happens at night, improving low-light video quality is the most critical problem in the video security industry today.

### DarkFighter – Stunning color video in near darkness

Featuring a large HD progressive scan CMOS sensor, Hikvision's DarkFighter Technology captures excellent color imaging in extremely dark environments – even down to 0.002 lux – and automatically switches to monochrome by removing the IR filter to boost sensitivity when illumination is lower than 0.002 lux. All the while, DarkFighter maintains superlative image quality.

### DarkFighterX – Dual-sensor imaging for full color images

DarkFighterX's technology is based on the retinal imaging that human eyes use to process color and brightness. This human-like technology features an innovative dual-sensor design – one sensor for IR imaging that guarantees image brightness, the other sensor for visible light that guarantees vivid color. These signals are then combined into one bright, full-color image.



# HIKVISION ACUSENSE

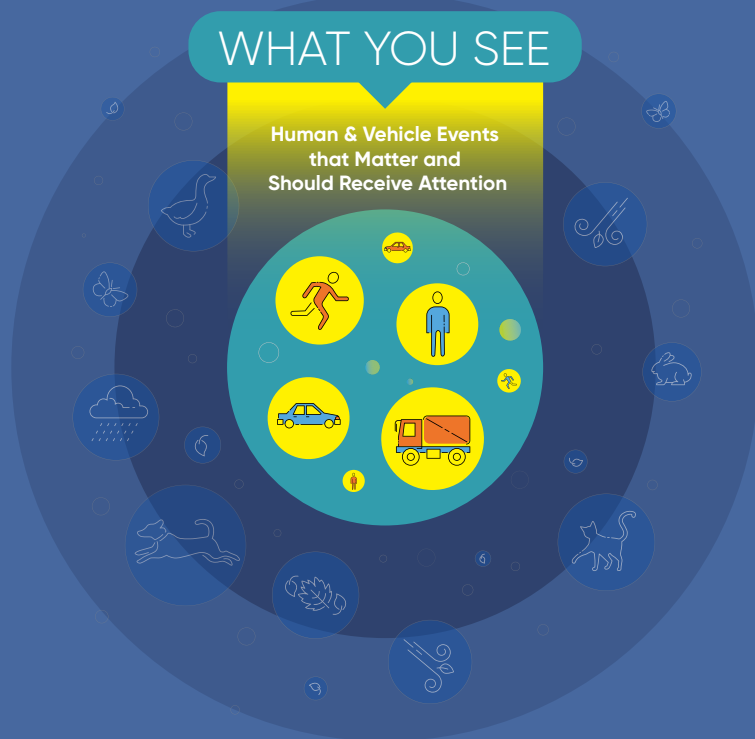
A sense of safety is one of the most basic human needs, and that goes for both personal and property safety. And this is exactly why people install security systems in their homes and businesses.

Compared to conventional sensor-based alarm systems, a video-based security system that utilizes cameras has several advantages: the ability to watch events in real-time over the live feed, capture critical data around those events, and provide solid and accurate evidence for law enforcement.

AcuSense technology adds a touch of intelligence to Hikvision's popular cameras and video recorders, making them perfect for an accessible and intelligent security system. Based on Deep Learning technology, AcuSense helps you focus on human and vehicle events in two ways: alarms will only trigger when the preset type of intrusion takes place, and video footage is sorted by target-type categories for easier searching through recorded footage. Strobe light and audio alarms serve as virtual security guards, protecting users from potential risks by warding off intruders. When emergencies occur, related videos are classified into human and vehicle categories for quick search and retrieval.

Sophisticated, highly effective, and affordable, the AcuSense solution provides SMB owners and operators an intelligent and easy-to-use protection system for their property and assets, while helping resellers build a uniquely competitive go-to-market proposition.

## AcuSense



FOCUS  
and ACT

## AcuSense Technology





The logo for ColorVu Series Camera, featuring the word "ColorVu" in a stylized font with a multi-colored "C" and "Series Camera" in a smaller, grey font below it. The logo is set against a dark, irregular shape on a background of colorful, abstract brushstrokes in orange, yellow, green, and purple.

ColorVu  
Series Camera

An icon representing 24x7 colorful imaging. It features a clock face with a checkmark inside, the text "24 Hours" next to it, and a green "x7 Colorful Imaging" to the right.

24 Hours x7 Colorful  
Imaging

View in color,  
Even in darkness

# HIKVISION COLORVU

Darkness provides cover for theft, trespassing, and other crimes. When incidents occur at night, dim, low-quality images from conventional cameras miss or lose critical details. Cameras with infrared LEDs are able to provide extra light for clearer image, but in black-and-white.

But now, imagine capturing vivid, colorful details – such as the color of people's clothing or of a car – even in total darkness. Hikvision ColorVu Technology makes this possible.

Hikvision ColorVu Technology enables front-end products to capture details in low light with three advantages: advanced hardware, superior ISP algorithm, and reliable quality control. ColorVu technology employs two specific breakthroughs in hardware technology: advanced lenses and powerful sensors. These lenses reach up to F1.0, allowing more light to enter and thereby increasing image brightness. Next, high-sensitivity sensors vastly improve the utilization of that light. The frontier ISP algorithm realizes precise color rendition to produce accurate colorful images. Moreover, active alignment technology guarantees the focusing performance of lenses in the mass production of ultra-high definition ColorVu products, resulting in superlative quality control.

Extreme light conditions are also taken into consideration in the design process. Some cameras are equipped with warm, natural-looking supplemental lighting. This way, when there is no light source whatsoever – even starlight or street lights – they can guarantee colorful imaging. For most scenes, the environmental light is bright enough for ColorVu cameras to render vivid color without supplemental lighting.

The ColorVu logo, featuring a multi-colored "C" followed by the text "ColorVu" in a sans-serif font.

# LIGHTFIGHTER

## 140 dB WDR

Hikvision is set to reach new heights in extremely high contrast imaging with the ultra-high 140 dB WDR “LightFighter” technology for exceptional, industry-leading visibility in brightly lit or high-contrast environments. The result of this cutting-edge advancement is crystal-clear, detail-rich images with true color reproduction in lighting conditions that would defeat conventional WDR technology.

The key to the performance of the LightFighter technology is the industry-leading WDR system that allows cameras to record greater scene details even where the intensity of illumination varies considerably, such as backlighting when very dark and very bright areas appear simultaneously in the field of view. The 140 dB WDR in the LightFighter offers 100 times more powerful enhancement than the conventional 120 dB WDR systems.

LightFighter is particularly suited to intense backlight situations, and is the ideal technology for cameras pointing towards windows and entrance doors.





# 4K

With the development of 4K technology quickly coming into focus, opportunities to use this technology in security will continue to grow. As a leading IoT solution provider with video as its core competency, Hikvision has paid close attention to the rise of 4K and has launched a total 4K system to harness this technology in the global security industry.

Without complementary 4K components, such as monitors and NVRs, 4K cameras cannot be used to their full potential, and therefore have little practical use in security applications.

By building a total system – complete with cameras, NVRs, etc. – Hikvision strives to provide a system that is more helpful and more useful to its customers. The Hikvision 4K system, which comes equipped with a variety of smart functions, satisfies the security industry's need for advanced analytics with ultra-high resolution video.

Recently, Hikvision has released an 8K camera which monitors large scenes over long distances. This one camera does the work that once required several cameras, thus reducing installation and maintenance costs.





# DeepinView Series Network Cameras

## Deeper Intelligence for Expansive Security

- High performance and intelligent products with Deep Learning algorithms and high performance GPU
- The 2nd-generation DeepinView Series supports multiple algorithms in one device for a variety of scenarios. Additionally, it integrates multiple lenses to simultaneously capture sharp details and the big picture for extensive situational awareness.
- People counting, dual-lens people counting, multi-target-type detection, ANPR, vehicle appearance analysis, hard hat detection, facial recognition, perimeter protection, and queue management.
- DeepinView Series products are edge nodes in the AI Cloud architecture, focusing on multidimensional data collection and front-end intelligent processing.





# Ultra Series Network Cameras

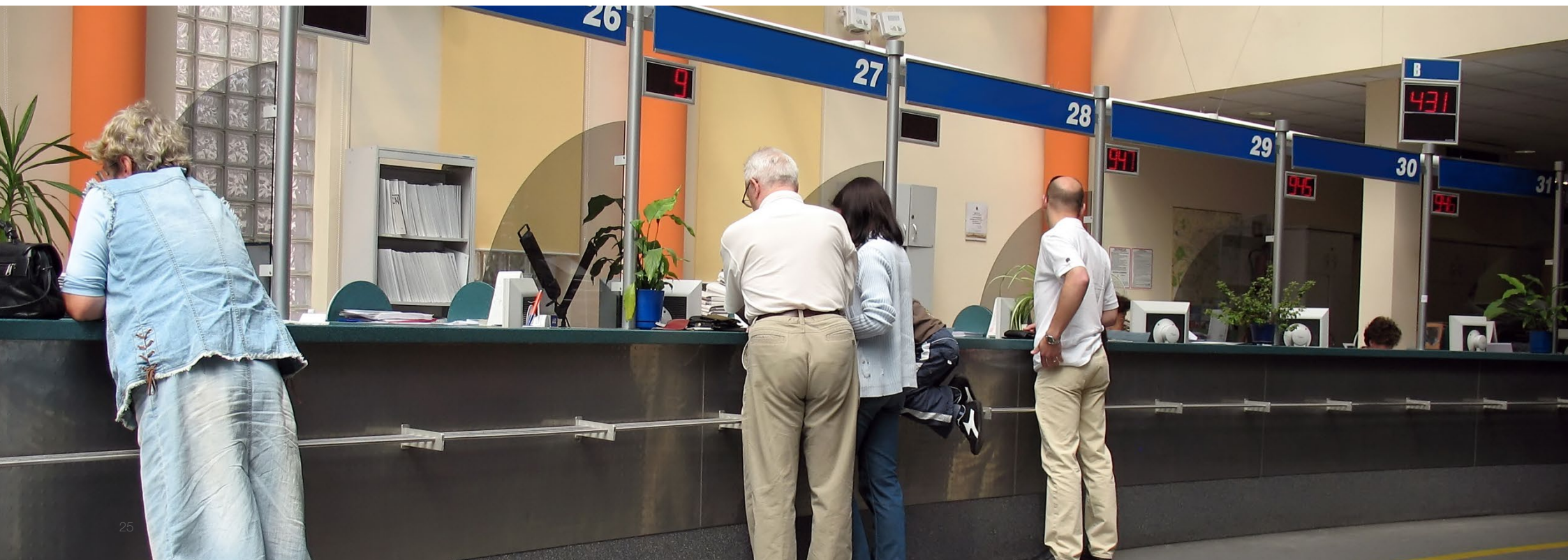
- › Ultra Series Cameras easily meet the requirements for projects with surprisingly high performance, excellent stability and network security
- › Excellent adaptability to lighting conditions with DarkFighter and ColorVu technologies
- › False alarm reduction through human and vehicle target classification based on AcuSense technology
- › Excellent stability: dual-file system backup, wide voltage range, NEMA 4X anti-corrosion, etc.
- › Loaded with advanced security functionalities to increase your system's cyber defense capabilities, including 802.1x EAP-TLS 1.2, security audit log, stream encryption, SFTP, SD card encryption, etc.
- › Supports HEOP, Metadata, ONVIF, ISAPI, SDK, and E-Home to make integration easier



# Special Series Network Cameras

Fits Anywhere, Monitors Everything

- Covert design
- Various lens options
- Deep Learning face capture or ANPR (optional)
- Dual channels on one camera
- Standalone security site with solar panels and 4G connectivity





# PTZ Dome Camera

**029** Ultra Series

**038** Special Series



# Ultra Series PTZ Cameras

Great Innovation, Inside and Out

- H.265+/H.265 codec
- 4K ultra HD
- DarkFighterX technology
- High resolution DarkFighter Deep Learning-based target classification algorithm for Auto-Tracking 3.0 and perimeter protection
- False alarm reduction
- Face capture and ANPR
- Image enhancement including rapid focus, P-Iris, 140 dB WDR, and extended IR
- High zoom ratio & optical image stabilization (OIS)
- Supports IK10 & IP67, wiper
- Supports ONVIF, ISAPI, and CGI
- Supports Hikvision SDK and third-party management platform





# Special Series PTZ Cameras

Great Innovation, Inside and Out

- Up to 1920 x 1080 resolution
- H.265+ / H.265 codec
- DarkFighter Technology
- More zoom ratio options – 20x / 23x / 30x / 36x / 50x
- Supplemental light options – IR (up to 200 m in distance), Laser (up to 1,000 m in distance)
- Supports IP66, wiper
- Supports ONVIF, ISAPI, and CGI
- Supports Hikvision SDK and third-party management platform



# Explosion-Proof & Anti-Corrosion Series

**049** Explosion-Proof Series

**053** Anti-Corrosion Series





# Explosion-Proof Series

Complete Protection with Superior Design Inside and Out

- Explosion-proof certification: ATEX, IECEx, ULEx
- Anti-corrosion certification: NEMA-4X, C5
- 316L Stainless Steel
- DarkFighter (optional)
- Smart function: Hard hat detection (optional)
- H.265+/H.265 codec



# NVR

**056** DeepinMind Series

**061** Ultra Series

**065** Pro Series

**069** Workstation Series

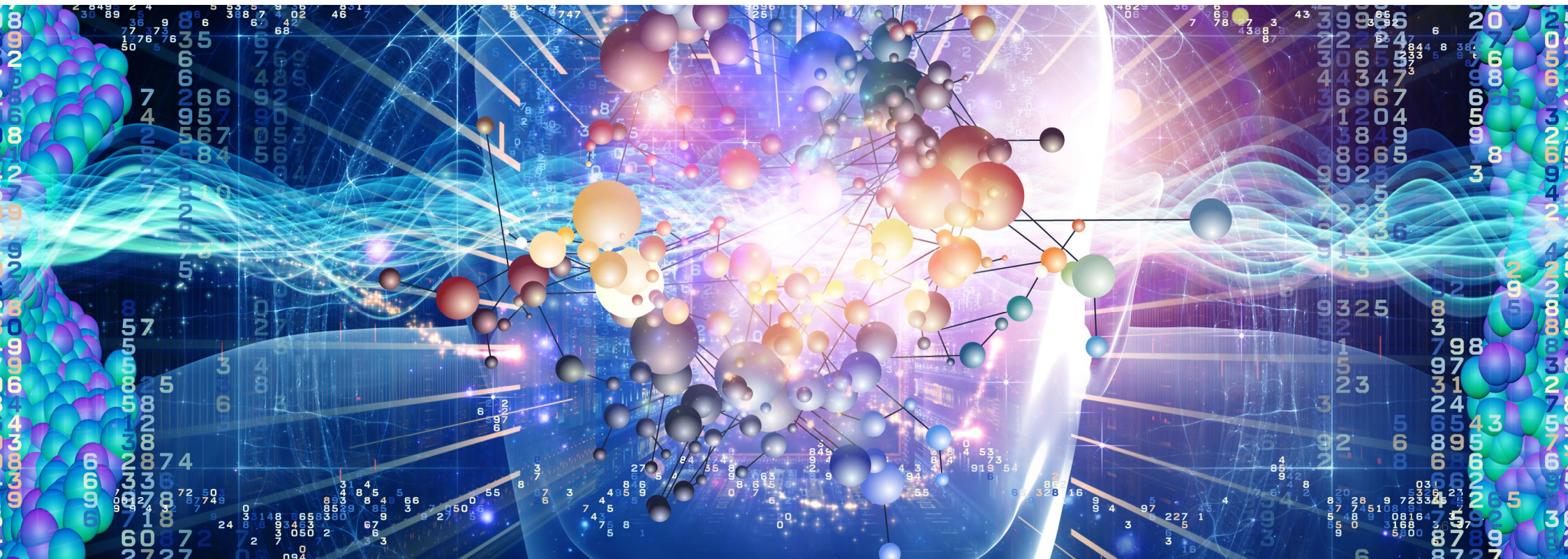




# DeepinMind Series NVR

## Deeper Intelligence for Expansive Security

- The first Deep Learning NVR in the industry
- GPU-based designs
- Intelligent analytics and advanced storage in one
- Fast and accurate facial, human body, vehicle, and behavior recognition, and perimeter protection

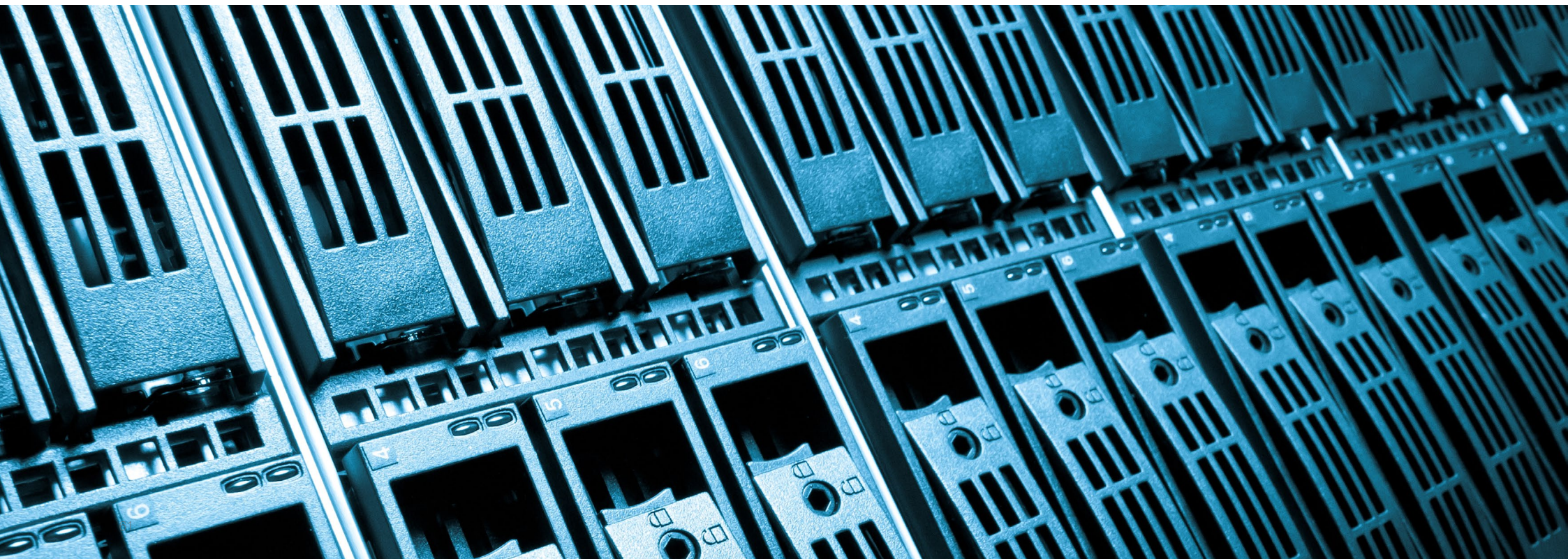




# Ultra Series NVR

## Superior Storage and Robust Recording

- H.265+/H.265, H.264+/H.264, MPEG4 self-adapting decoding
- Supports people counting cameras, automatic number plate recognition (ANPR) cameras, fisheye cameras, and PoS text overlay
- Advanced streaming technology enables a smooth live feed even under imperfect network conditions
- Supports RAID 0, 1, 5, 6, 10 and N+1 hot spare for even more reliable data storage, effectively reducing data loss risks
- Supports IoT systems (CCTV and Non-CCTV convergence)





## Pro Series NVR

First choice for small- to medium-sized projects

- H.264/H.264+, H.265/H.265+, MPEG4 self-adapting decoding
- Supports VCA search and POS function
- New easy-to-use GUI 4.0 features intuitive interface
- Hik-Connect for easy network management



# Network Storage

**072** Hybrid SAN

**076** Cluster Storage





# Hikvision Hybrid SAN Products

Cost-Effective, Dedicated, Superior Data Security and Sustainability

- Dual mode support: Video Direct Streaming and IPSAN
- Video Direct Streaming mode eliminates need for recording servers, with excellent cost-effective video storage
- Video stream-based R/W/Search operation, higher efficiency
- Super N+1 failover (1 failover node to take over traffic of multiple faulty nodes) providing enhanced video safety
- Proven lab and field compatibility in IPSAN mode with leading VMSs such as Milestone, AXXON, ISS, etc.
- Supports local, remote, and scheduled backup
- Hybrid SAN with pre-installed HDDs creates cost-effective solutions for long-term storage
- Supports ONVIF, PSIA, and RTSP protocols and extended data retention (with third-party cameras such as Bosch, Axis, Sony, Samsung, etc.)



# Hikvision Cluster Storage Products

High Performance, High Scalability, High Reliability,  
High Availability

- Clustering technology creates load balancing and prevents single-point failure
- Supports fault tolerance to prevent single device failure
- Virtual management unifies storage resources to one pool for flexible utilization.
- Storage types include video, images, files, and objects
- Equipment-level redundancy reaches the highest levels of data security
- Real-time online system capacity expansion; one cluster device can expand to up to 30,000 channels of video input and 300 PB storage
- These products make use of ultra-fault-tolerant Network RAID technology (based on Erasure Code)
- One IP for the entire storage system means easy maintenance
- Video can be backed up locally and via cluster storage to improve system reliability





# Data Center

**079** DeepinMind Server

**083** General Purpose Server



# DeepinMind Server

Create Utility, Accurate, and Innovative AI

- Fast and accurate facial, human body, vehicle and behavior recognition based on Deep Learning algorithms
- Supports clustered implementation to facilitate load balancing, dynamic expansion, and system failover
- Professional GPU accelerator with high computing capacity
- Abundance of functions to meet needs in a multitude of scenarios and requirements





# Thermal

**086** HeatPro Series

**088** Security Group Cameras

**093** Thermographic Group Products

**097** Temperature Screening Products



# HeatPro Series

## Professional Protection Made Simple

Hikvision HeatPro Series Cameras feature Deep Learning thermal video analytics for all-weather perimeter protection, object temperature measurement, and fire detection with real-time alarms. They are easy to configure, making the cameras ideal for SMB applications in residential, retail, parking, museums, data centers, and other verticals.

- > All-weather deterrence and alerts
- > Simple, three-step deployment for perimeter protection
- > Thermal video analytics with Deep Learning human & vehicle classification, reducing maintenance overhead
- > Temperature exception alarms for fire prevention
- > Visual and auditory alarms (offered by /PA models)



## Hikvision HeatPro Series Thermal Cameras

### Professional Protection Made Simple





# Security Group Cameras

## See the World in a New Way

Hikvision's Thermal Security Cameras feature Deep Learning thermal video analytics for all-weather perimeter protection, object temperature measurement, and fire detection with real-time alarms. They feature expert design for high value infrastructure applications in power stations, substations, airports, warehouses, and other verticals.

- All-weather deterrence and alerts
- Thermal video analytics with Deep Learning human & vehicle classification, reducing maintenance overhead
- Temperature exception alarms for fire prevention
- Multiple model options covering short and long range demands



# Thermography Group Products

## Any Moment, Any Condition

Hikvision's Thermographic Cameras have been used widely for temperature detection in regions of interest, inspection on potential heat sources, and failure detection in noncontact electromechanical systems. They meet high demands for substations, hydropower stations, waste treatment plants, manufacturing workshops, and similar applications.

- Accurate temperature measurement, up to  $\pm 2^{\circ}\text{C}$  ( $\pm 6^{\circ}\text{F}$ ) or  $\pm 2\%$
- 24/7 real-time measurement with instant alarms on temperature anomalies
- Deep Learning algorithm reduces false alarms from forklifts, shadows, etc.
- Various types of measuring rules for detection and recording flexibility
- Continuous and consistent temperature data





# Temperature Screening Products

## Safer & Smarter, Towards the New Normal

Hikvision's Temperature Screening Thermographic Cameras, with advanced algorithm and thermal detectors, are designed to detect elevated skin-surface temperatures. With accuracy up to  $\pm 0.3^{\circ}\text{C}$ , they can be used for rapid and preliminary temperature screening in office buildings, factories, stations, airports, and other public places.

- > Safe - Noncontact measurement prevents physical contact
- > Fast - One second per capita for skin-surface temperature detection
- > Smart - Deep Learning detection reduces false alarms
- > Flexible - Multiple product choices for fixed or portable deployment
- > Accurate - Up to  $\pm 0.5^{\circ}\text{C}$  ( $\pm 0.9^{\circ}\text{F}$ ) w/o Blackbody Calibrator and  $\pm 0.3^{\circ}\text{C}$  ( $\pm 0.5^{\circ}\text{F}$ ) w/ Blackbody Calibrator



# Commercial Display

- 101** LCD Video Wall
- 104** LED Display
- 110** Interactive Display
- 111** Digital Signage





# LCD Video Wall

See It Better

- > Ultra-narrow bezel widths: 0.88, 1.8, and 3.5 mm
- > Industrial-grade panel and structure design
- > Precise in-factory color calibration
- > Various modes for multiple scenarios
- > Advanced UHD (4K) Splicing
- > Anti-static/Radiation protection





# LED Display

## Brighten Every Moment

- Pix Master Pixel Control – Proprietary image processing technology enhances image clarity without loss of detail.
- Top Grey Level – 22-bit top grey level brings you a wider range of color grades
- Remote Control – Remote controller meets all your needs, including display modes adjustments & signal source switches, brightness level, automatic dehumidification and blue light filtering
- User-friendly Design – Flexible installation with floor-standing, wall-mounting, and hoisting methods to choose from; easier maintenance with front magnetic wireless module design
- Automatic Dehumidification – Automatic dehumidification function lowers light failures by 30% on average, effectively lengthening lifespan





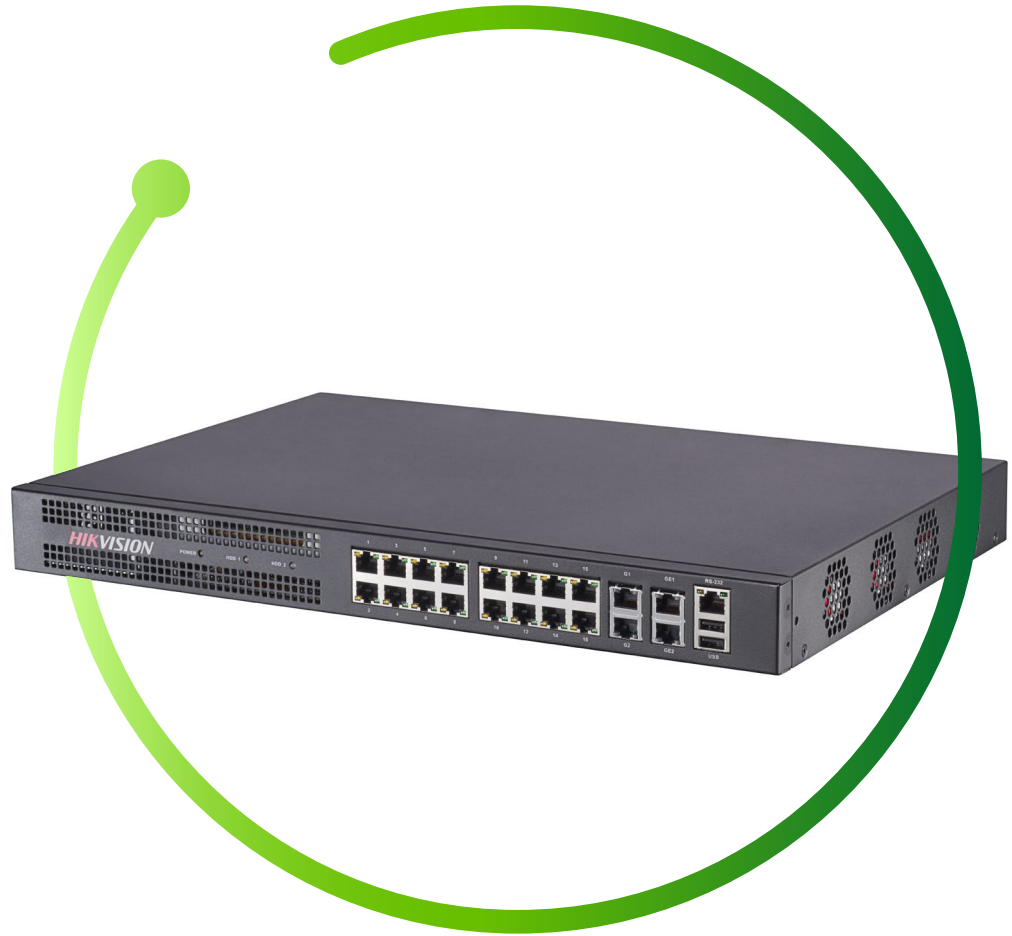
# Digital Signage

## Diversified Advertisement Media Player

- Flexible and efficient advisement display and management
- Ready-to-go design templates
- Cross-network management
- Environmentally-friendly “green” advertising
- Multiple applications to suit various business scenarios



# Decoder





# Decoder

## Dynamic and Secure Video Stream

- > Multiple output interfaces
- > Supports various video compression formats
- > Decoding capability up to 128-ch 1080p
- > Supports splicing, cross-window, division, and roaming modes
- > Video wall controlling up to 16 screens



# Video Wall Controller





# Software

- 119** HikCentral Professional
- 120** HikCentral Enterprise–Commercial
- 121** HikCentral Enterprise–Retail
- 122** HikCentral Enterprise–Industrial
- 123** HikCentral Enterprise–Education
- 124** HikCentral Master
- 125** HikCentral–Workstation
- 127** Blazer Pro

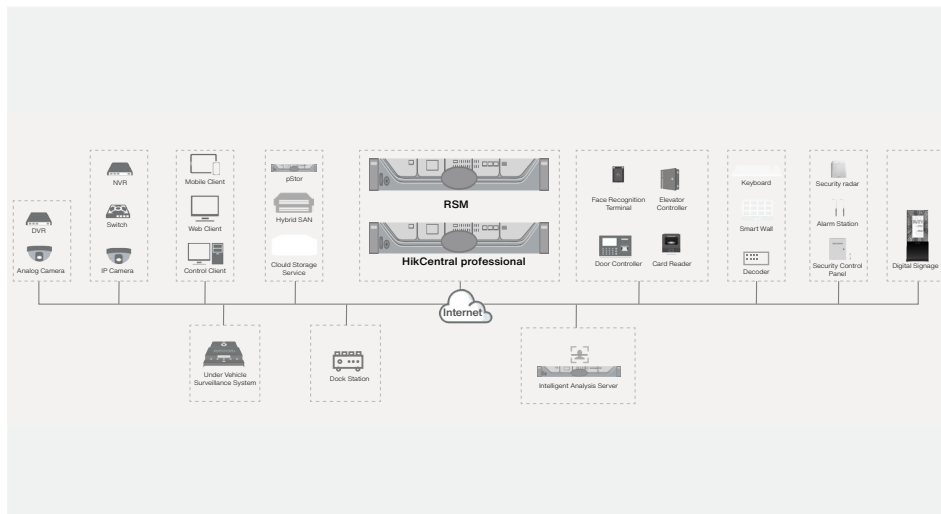


# HikCentral Professional

## Versatile Security in One Platform

HikCentral Professional, Hikvision's software platform for integrating and managing security systems, is designed to meet a variety of security challenges in one place. With this advanced platform, users can manage individual systems such as video security, access control, security alarms, and more, as well as explore cross-system functionalities. While facilitating protection of people and property, HikCentral Professional makes daily operations more efficient and helps users of all kinds make smarter decisions.

- > **Simplifies Deployment and Maintenance** – With a minimum system requirement of Intel i3 CPU and 8 GB RAM, you can have your own security platform deployed with limited hardware cost. Moreover, maintenance of the whole system is much easier with visualized health monitoring in real time.
- > **Facilitates Hassle-free Integration** – Through an open architecture design and a series of highly adaptive OpenAPI interfaces, you will enjoy hassle-free integration with a wide range of third-party systems such as ARC and payroll systems.
- > **Streamlines Operations and Management** – With situational awareness powered by informative dashboards and interactive E-maps, optimal approaches advised by operation wizards, and the flexibility of a user-defined control panel, you will make smarter decisions fluidly and efficiently.
- > **Scales as Business Grows** – By virtue of a flexible and scalable architecture, the platform can be scaled as your business needs evolve. You can expand it from a small 32-channel, 8-door system to an ultra-large-scale system that links up to 100,000 channels of equipment (under the RSM mode).



Software	
<b>System Architecture</b>	Server / Web Client / PC Client / Mobile APP
<b>OS</b>	Microsoft® Windows 7 SP1 (64-bit)
	Microsoft® Windows 8.1 (64-bit)
	Microsoft® Windows 10 (64-bit)
	Microsoft® Windows Server 2008 R2 SP1 / 2012 / 2012 R2 / 2016 / 2019 (64-bit)
<b>Browser</b>	Internet Explorer 10/11 and above
	Chrome 61 and above
	Firefox 57 and above
<b>Database</b>	Safari 11 and above (running on Mac OS X 10.3/10.4)
	PostgreSQL V9.6.13
<b>Supported Language</b>	25 languages: English, 简体中文 (Simplified Chinese), Русский (Russian), Български (Bulgarian), Magyar (Hungarian), Deutsch (German), Italiano (Italian), Čeština (Czech), Français (French), Polski (Polish), Nederlands (Dutch), Português (Portuguese), Português (Portuguese), Español (Spanish), Dansk (Danish), Suomi (Finnish), Türkçe (Turkish), 한국어 (Korean), 繁體中文 (Traditional Chinese), ไทย (Thai), Tiếng Việt (Vietnamese), 日本語 (Japanese), العربية (Arabic), Українська (Ukrainian), עברית (Hebrew)
Hardware	
<b>CPU</b>	Intel® Core™ i5-4590 @ 3.30 GHz 3.30 GHz
<b>Memory</b>	8 GB
<b>HDD</b>	At least 650 GB

HikCentral Professional Maximum Performance		
<b>General</b>	<b>Managed Devices</b>	General Performance: 1,024 ①
		High Performance: 2,048 ②
<b>Users and Roles</b>	<b>Areas</b>	3,000
	<b>Users</b>	3,000
<b>Person</b>	<b>Roles</b>	3,000
	<b>Persons</b>	50,000
	<b>Cards</b>	250,000
	<b>Fingerprints</b>	200,000
<b>Video Surveillance</b>	<b>Profiles</b>	50,000
	<b>Cameras</b>	General Performance: 3,000 ①
		High Performance: 10,000 ②
		High Performance (RSM): 100,000
<b>Face Comparison</b>	<b>Decoding Devices</b>	32
	<b>Smart Walls</b>	32
	<b>Persons with Profiles for Face Comparison</b>	1,000,000
<b>Access Control</b>	<b>Face Comparison Groups</b>	64
	<b>Access Points (Doors + Floors)</b>	1,024
<b>Visitor</b>	<b>Access Schedules</b>	32
	<b>Visitors</b>	10,000
<b>Time &amp; Attendance</b>	<b>Shift Schedules</b>	128
	<b>Persons for Time and Attendance</b>	10,000
	<b>Attendance Reports</b>	16
<b>Entrance &amp; Exit</b>	<b>Lanes</b>	8
	<b>Cards Linked with Vehicles</b>	250,000
	<b>Vehicle Passing Frequency in Each Lane</b>	1 Vehicle/s
<b>Alarm</b>	<b>Alarms</b>	60 million
	<b>Alarms Sent to All Clients</b>	120/s

①: The general performance requires Intel® Xeon® E3-1220 or higher.

②: The high performance requires Intel® Xeon® E5-2620 or higher.



# HikCentral Enterprise-Commercial

## Platform Solution Tailored for Commercial Buildings

HikCentral Enterprise-Commercial is a video-based software platform focused on commercial real estate, providing video security, access control, video intercom, alarm, operations and maintenance support, parking lot management, and other functions through centralized management, multiple applications, and intelligent analytics.

- **Video-Based Security** – Using HikCentral's functional modules for live viewing, playback, smart video walls, and PTZ control, this system helps users complete daily security inspections and monitoring.
- **Access Control** – The integrated system includes access control, elevator control, visitor management, video intercom, patrols, and other functions to help users manage the access permissions of various personnel and formulate patrol tasks.
- **Vehicle Control** – Entrance and exit management, parking lot management, parking guidance, checkpoint violation management, etc., constitute a vehicle control system so users can build their own parking payment and violation management system.
- **Event Management** – Highly flexible event & alarm modules and a powerful map-based monitoring module can help users take precautions before an event occurs, and even intervene in an event in real time. Intelligent event search functions facilitate post-event investigations as well.
- **Operation and Maintenance** – Users can check the status of various devices and services in real time, troubleshooting and making repairs in a timely manner wherever and whenever needed.



Software	
System Architecture	Server / Web Client / PC Client / Mobile APP
OS for Server	CentOS 7.2 64 bit / CentOS 7.4 64 bit / CentOS 7.6 64 bit
OS for Client	Microsoft® Windows 7 (32/64 bit)
	Microsoft® Windows 10 (64 bit)
Browser	Internet Explorer 11 and above
	Chrome 63.0.3239.108 and above
Supported Language	2 languages: English, 简体中文 [Simplified Chinese] [Ukrainian],(Hebrew)
Hardware	
CPU	CPU: 2.1G, 8C/16T
Memory	64 GB
HDD	HDD: 1T SATA × 2, 3.5" Enterprise SATA 7.2k HDDs
NIC	1GbE × 4

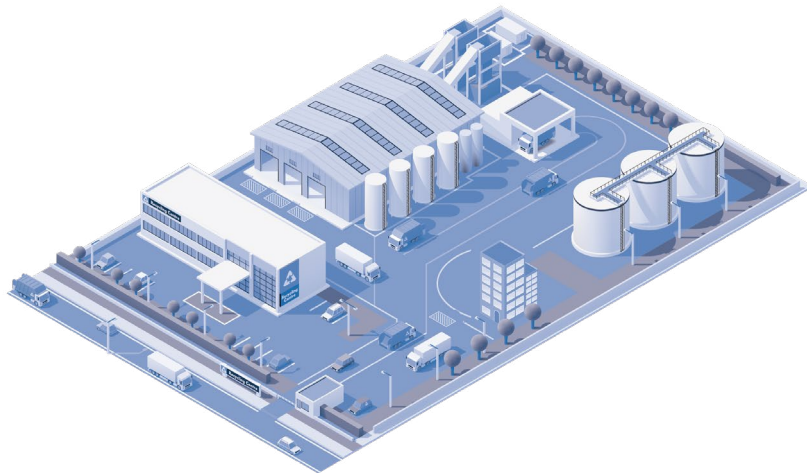
HikCentral Enterprise-Commercial Maximum Performance		
	Items	Max Performance
General	Organizations	50000
	Areas	20000
	Users	200000
	Roles	10000
	Persons	300000
	Cards	300000
Video Security	Channels for Video Surveillance	100000
	Smart Walls	10
	Screens per Video Wall	25 * 25
Event & Alarm	Event Storage	72000000
	Simultaneous Events	300/s
	Security Control Panels	100
Intrusion	Zones	1000
	Face Capture Cameras	500
Facial Application	Faces	300000
	Face Groups	16
	Face Pictures per Face Group	30000
Attendance	People for Attendance	200,000
	Residences	10000
	Parking Lots	20
Parking	Lanes	60
	Parking Spaces in Total	10000
	Parking Spaces per Floor	2000
Campus Checkpoint	Registered Vehicles	30000
	Checkpoints	30
	Display Screens	30
Central Storage	Channels	100000

# HikCentral Enterprise-Retail

## Platform Solution for Retail Business Intelligence

HikCentral Enterprise-Retail is a store auditing software that combines reliable video security functionality with intelligent software, helping retailers improve in-store service and increase profits. It provides functions such as customer traffic analytics, customer group analytics, heat mapping, area popularity analytics, remote audits, etc., meeting the requirements of retailers who need a boost in operations, management, and more.

- **Customer Traffic Analysis** – The retail component supports multiple customer traffic statistics, such as customer traffic analytics (face) and customer traffic analytics (conventional). And multiple customer traffic analytics, such as store ranking, YoY & MoM analytics, customer attributes, area popularity, and heat mapping. It can exclude clerks and repetitive customers for more accurate customer traffic analytics (based on faces). Customer and unauthorized-person archive management, and store visit prompts are also available by mobile.
- **Audits and Rating** – Real-time random audits, timed random audits, on-site audits (via E-Store app), image scheduled audits, and video scheduled audits are featured. Users can submit deficiencies found in audits to the audited store for rectification. The deficiency center provides a closed-loop rectification procedure for any issues found in an audit, including rectification, submission of results, and review of the submitted results.
- For base functionality, please refer to HikCentral Enterprise-Commercial.



Software	
System Architecture	Server / Web Client / PC Client / Mobile APP
OS for Server	CentOS 7.2 64 bit / CentOS 7.4 64 bit / CentOS 7.6 64 bit
OS for Client	Microsoft® Windows 7 (32/64 bit)
	Microsoft® Windows 10 (64 bit)
Browser	Internet Explorer 11 and above
	Chrome 63.0.3239.108 and above
Supported Language	2 languages: English, 简体中文 (Simplified Chinese) (Ukrainian),(Hebrew)
Hardware	
CPU	CPU: 2.1G, 8C/16T
Memory	64 GB
HDD	HDD: 1T SATA × 4, 3.5" Enterprise SATA 7.2k HDDs
NIC	1GbE * 2

HikCentral Enterprise - Retail Maximum Performance		
	Items	Max Performance
Retail Application	Stores	500
	Archives	3,000,000 archives, including archives of customers and archives of unauthorized persons.
	Store Visit Notification Time	Within 5s in average for one notification when there are less than 1,000,000 archives; within 10s in average when there are less than 3,000,000 archives.
	Counting Groups	3000
	Cameras per Counting Group	100
	Cameras per Counting Group	100
	Accessed Dual-Lens People Counting Camera	5000
General	Organizations	50000
	Areas	20000
	Users	200000
	Roles	10000
	Persons	300000
	Cards	300000
	Channels for Video Surveillance	100000
Video Security	Smart Walls	10
	Screens per Video Wall	25 * 25
Event & Alarm	Event Storage	72000000
	Simultaneous Events	300/s
Intrusion	Security Control Panels	100
	Zones	1000
	Face Capture Cameras	500
Facial Application	Faces	300000
	Face Groups	16
	Face Pictures per Face Group	30000
Attendance	People for Attendance	200000
	Residences	10000
	Parking Lots	20
Video Intercom	Lanes	60
	Parking Spaces in Total	10000
	Parking Spaces per Floor	2000
	Registered Vehicles	30000
Campus Checkpoint	Checkpoints	30
	Display Screens	30
Central Storage	Channels	100000

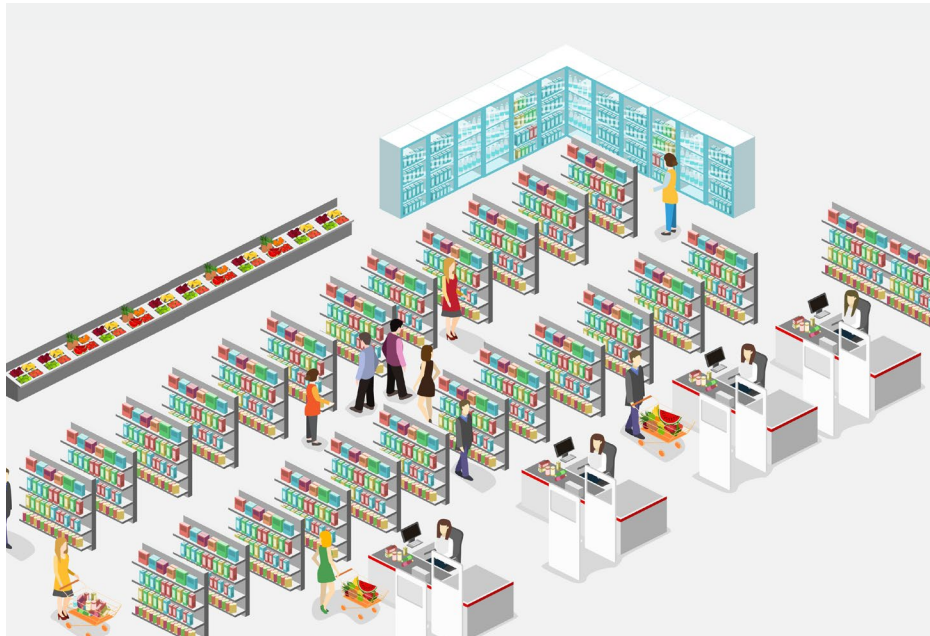


# HikCentral Enterprise-Industrial

## All-inclusive Platform Solution for Industrial Parks

HikCentral Enterprise-Industrial is a centralized and intelligent platform integrates and links security information by accessing video security devices, single-card system devices, parking lot devices, alarm system devices, and more, to give you diversified intelligent applications. Based on IoT technology, it integrates technologies such as video monitoring, facial recognition, AI, big data, etc., and combine hardware with software.

- Industrial Application – Goods management, dock management, AR-scenario application, AI-model management, remote patrol, thermal analysis, dashboard – it's all here. This system is suitable for industrial sites of commodities businesses, manufacturing industry, and logistics companies. Based on an "Integrated Software Framework", HikCentral Enterprise-Industrial will keep satisfying users' quickly updating needs via its advanced componential technology. This system will excel in every industry with its integration and centralized management of various resources.
- For base functionality, please refer to HikCentral Enterprise-Commercial.



### HCE-Industrial

Software	
System Architecture	Server / Web Client / PC Client / Mobile APP
OS for Server	CentOS 7.2 64 bit / CentOS 7.4 64 bit / CentOS 7.6 64 bit
OS for Client	Microsoft® Windows 7 (32/64 bit)
	Microsoft® Windows 10 (64 bit)
Browser	Internet Explorer 11 and above
	Chrome 63.0.3239.108 and above
Supported Language	2 languages: English, 简体中文 [Simplified Chinese] [Ukrainian],(Hebrew)
Hardware	
CPU	CPU: 2.1G, 8C/16T
Memory	64 GB
HDD	HDD: 1T SATA × 4, 3.5" Enterprise SATA 7.2k HDDs
NIC	1GbE × 4

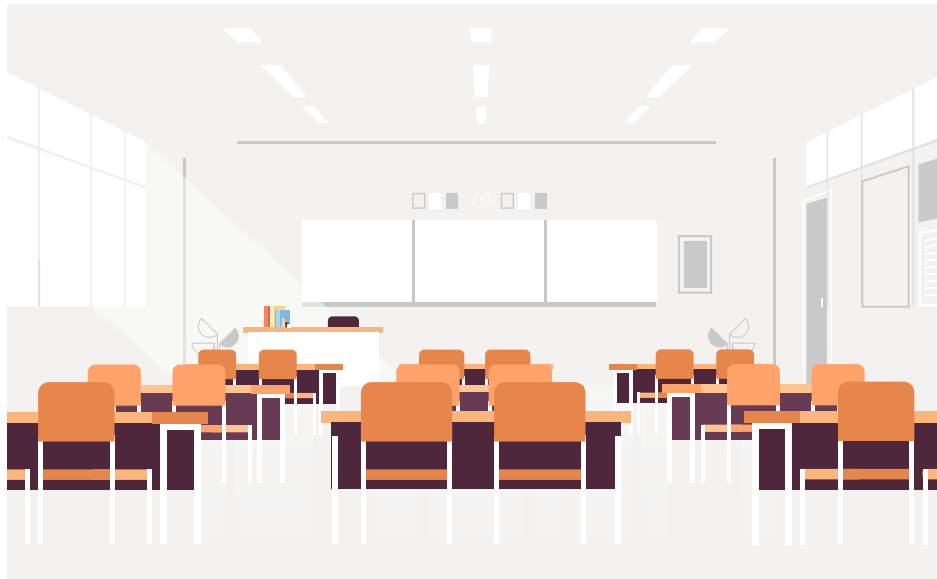
HikCentral Enterprise - Industrial Maximum Performance		
	Items	Max Performance
Goods Management	Scanning Units	5000
	Thermography Rules	500
Thermal Analysis	Scenes	8
	Patrol Items	20000
AR Scenario Application	Patrol Schedules	20
	Organizations	50000
Patrol Application	Areas	20000
	Users	200000
General	Roles	10000
	Persons	300000
	Cards	300000
	Channels for Video Surveillance	100000
Video Security	Smart Walls	10
	Screens per Video Wall	25 * 25
Event & Alarm	Event Storage	72000000
	Simultaneous Events	300/s
Intrusion	Security Control Panels	100
	Zones	1000
	Face Capture Cameras	500
	Faces	300000
Facial Application	Face Groups	16
	Face Pictures per Face Group	30000
Attendance	People for Attendance	200,000
	Residences	10000
Video Intercom	Parking Lots	20
	Lanes	60
Parking	Parking Spaces in Total	10000
	Parking Spaces per Floor	2000
Campus Checkpoint	Registered Vehicles	30000
	Checkpoints	30
Central Storage	Display Screens	30
	Channels	100000

# HikCentral Enterprise-Education

## Intelligent Platform Solution for Education

HikCentral Enterprise-Education is an information technology which has been developed for central management of video monitoring and education. It is a platform for collaborative teaching-learning to connect students and educators virtually and ensure uninterrupted learning with screen sharing. It features flexibility, scalability, high reliability, and powerful functions.

- Education Application – This deep vertical application provides education sharing, classroom attendance, and classroom information release screen. The informatization of education is designed to use information technology to support the use and development of educational resources.
- For base functionality, please refer to HikCentral Enterprise-Commercial.



Software	
System Architecture	Server / Web Client / PC Client / Mobile APP
OS for Server	CentOS 7.2 64 bit / CentOS 7.4 64 bit / CentOS 7.6 64 bit
OS for Client	Microsoft® Windows 7 (32/64 bit)
	Microsoft® Windows 10 (64 bit)
Browser	Internet Explorer 11 and above
	Chrome 63.0.3239.108 and above
Supported Language	2 languages: English, 简体中文 (Simplified Chinese) (Ukrainian),(Hebrew)
Hardware	
CPU	CPU: 2.1G, 8C/16T
Memory	64 GB
HDD	HDD: 1T SATA × 2, 3.5" Enterprise SATA 7.2k HDDs
NIC	1GbE * 4

HikCentral Enterprise - Education Maximum Performance		
	Items	Max Performance
Education Application	Classrooms	100
	Teachers and Students	2000
	Education Sharing System	100
	Persons for Viewing Recorded Courses	50
	Persons for Viewing Live Courses	150
	Classroom Information Release Screen	36
	Classroom Attendance Check Camera	36
General	Organizations	50000
	Areas	20000
	Users	200000
	Roles	10000
	Persons	300000
	Cards	300000
Video Security	Channels for Video Surveillance	100000
	Smart Walls	10
Event & Alarm	Screens per Video Wall	25 * 25
	Event Storage	72000000
Intrusion	Simultaneous Events	300/s
	Security Control Panels	100
Facial Application	Zones	1000
	Face Capture Cameras	500
	Faces	300000
	Face Groups	16
Attendance	Face Pictures per Face Group	30000
	People for Attendance	200000
Video Intercom	Residences	10000
	Parking Lots	20
Parking	Lanes	60
	Parking Spaces in Total	10000
	Parking Spaces per Floor	2000
	Registered Vehicles	30000
Campus Checkpoint	Checkpoints	30
	Display Screens	30
Central Storage	Channels	100000

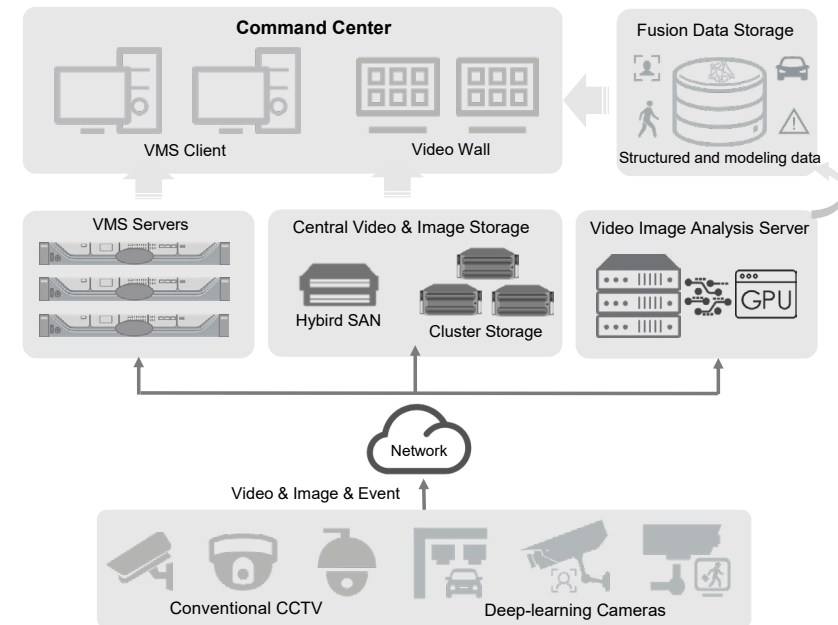


# HikCentral Master

## Comprehensive Platform Solution with Unlimited Expandability

HikCentral Master is an application platform designed for immense, fail-safe distribution of devices and services across multiple locations. Integrating AI, AR, big data, and other capabilities under the AI-Cloud architecture, HikCentral Master supports a virtually unlimited number of devices, users, and sites to meet a diversity of needs for data storage, analysis, and application.

- **Intelligent Platform Management** – Supports non-stop installation, parameter configuration, server monitoring, and log analysis. Supports cluster management and authorization management.
- **Intelligent Applications** – Integrating multiple function and application software, the platform extends its applications from video security to those based on AI algorithms, such as ANPR and facial recognition. This makes the platform applicable to scenarios such as public security and intelligent transportation.
- **Intelligent Scheduling** – Supports dynamic scheduling of computer resources based on integrated management of computers. Supports accessing multiple types of storage devices and integrates their management. It's compatible with devices from multiple manufacturers and multiple algorithms versions
- **Open Platform** – Supports integration with third-party infrastructure, data, platforms, and applications based on open standards.
- **Comprehensive Security Mechanism** – Provides security mechanisms for devices, networks, host computers, data, and applications, and supports multiple security control schemes.
- **Extensibility and Scalability** – Supports expanding the service capacities such as the maximum number of added devices, streaming storage, events, and data libraries. Increases capacity and stability by distributed deployment.
- **Multiple Usage Scenarios** – Supports assembling various modules into bespoke platforms based on specific usage scenarios.



### HCM

What HikCentral Master can do for you ?	
HikCentral Master focuses on data application, data collection, storage, processing, and intelligent applications. It provides data integration, storage and analysis of multidimensional data in the scenario of Edge Domain and Cloud Center, integrated with technologies of Artificial Intelligence and Internet-of-Things (IoT).	
<b>Video Center</b>	Through video inspection, electronic map, video analysis and other technologies, the system can realize video real-time viewing and query, and conduct video map applications and analysis.
<b>Multidimensional Data Fusion</b>	With the functions of fusion search, face search, vehicle search and human body search basing on big data technology, the system can conduct fast query and advanced search on people and vehicles, so as to help users quickly determine personnel and vehicle information.
<b>Intelligent Data Applications</b>	Through AI and big data technology, the system can realize various face tactical functions such as peer analysis, personnel landing, and frequent passing, as well as vehicle tactical functions such as trajectory search, regional collision, and vehicle landing analysis.
<b>Alarm Arming</b>	By target arming and alarm query function, the system can realize arming on the vehicles and people, and configure corresponding alarm rules and linkage rules.
<b>Statistics Center</b>	Through face data statistics, vehicle data statistics, human data statistics and other big data storage and analysis technologies, the system can graphically display the multi-dimensional data friendly.
<b>Video Maintenance and Operation &amp; Management Center</b>	The video maintenance module can achieve intelligent real-time monitoring of the system video running status through cameras online status detection, video content diagnosis and video record inspection. The operation & management center, as an integrator of background services, provides integration capabilities for configuration, logging, and monitoring. It can integrate the component's own monitoring and configuration interface, and provides a single sign-on service for the operation management center.
<b>AR Application</b>	Through AR technology, various images, videos, 3D models, etc. are superimposed on the AR PanoVu camera's view in real time to realize functions such as video labeling, video planning, high-high linkage, high-low linkage, etc., providing a more intuitive and flexible central command and management way.

# HikCentral-Workstation

## A Cost-Effective Product with HikCentral Professional

HikCentral-Workstation is a cost-effective unit embedded with HikCentral Professional software and Windows operating system. Combining the HikCentral Professional server and client, it creates efficient management of the live feed, playback, facial recognition, ANPR, access control, video intercom, alarm management, and more. It is used widely in small- to medium-sized projects and Hikvision's "solutions by scenario."





# Accessories

