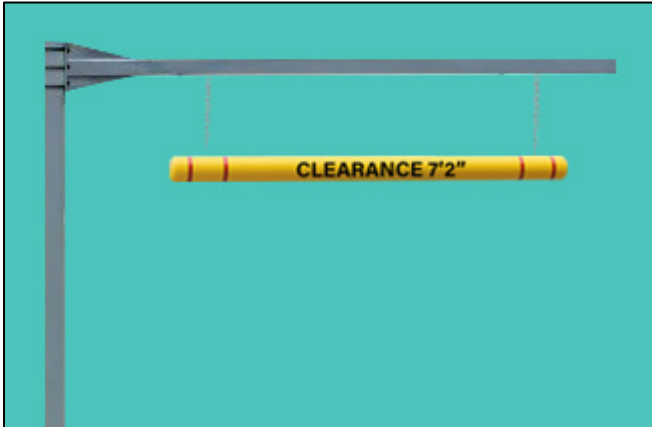
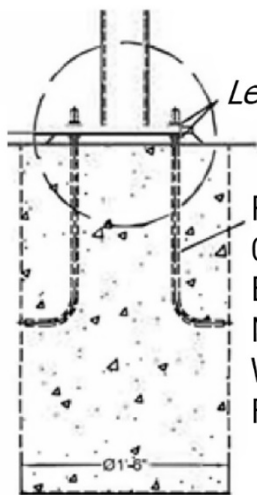
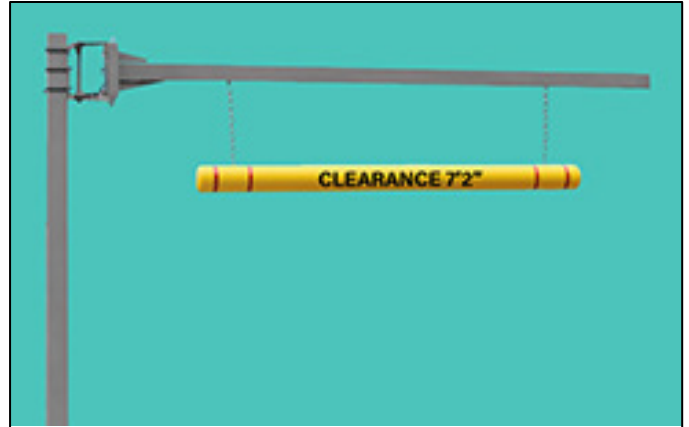


Carbon Steel Clearance Structure Installation

**Clearance Structure
with Fixed Arm**



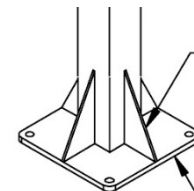
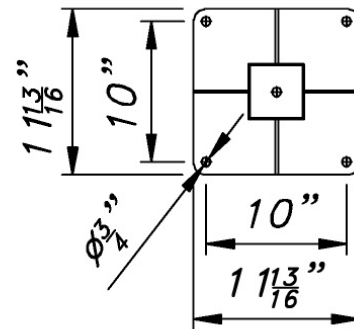
**Clearance Structure
with Retractable Arm**



Leveling Bolts with Washers

Recommended:
0.5" L18" Galvanized Steel J Anchor
Bolts: ASTM 1554 Grade 36 Bent
Nuts: ASTM A563 Grade A Hex
Washers: ASTM F436 Hardened
Finish: ASTM F2329 Hot Dip Galvanized

Mounting Plate Dimensions



Sheet steel 6ga

Sheet steel 0.55" thickness



Optional:

This anchor assembly helps with mounting the Carbon Steel Clearance Structure. J-Anchor Kit includes:
(4) 5/8" Hex Nuts, (4) 5/8" Washers, & (4) 5/8" x 17-7/8" x 3-7/8" Galvanized Bent Anchors along with steel template.



It is recommended to use Sonotube® filled with foundation grade high strength concrete with steel rods enforcement. 30" deep or 4" deeper than local frost line.