



SECTION 05 50 00

Metal Fabrications

SECTION 34 71 13

Vehicle Barriers

Carbon Steel Free-Standing Overhead Clearance Structure

Simon Marketing Group, LLC
dba Parking Lot Safety Solutions
1405 White Oak Drive
Kalamazoo, MI 49008
Phone: 248-855-6647
carol@simonmarketinggroup.net

Simon Marketing Group, LLC, dba Parking Lot Safety Solutions, is 100% woman owned and operated in Kalamazoo, Michigan and certified by the SBA. We are a National Distributor of the Clearance Structure and the Height Guard product and offer discounted pricing. Simon Marketing Group and Parking Lot Safety Solutions are committed to providing the most colors and sizes of overhead clearance bars. We pride ourselves on being a leader in bringing you innovative products.

Carbon Steel Free-Standing Overhead Clearance Structure with a Height Guard Clearance Bar alert drivers of the height of a facility's vehicular drive-thru or passage way. Revise spec section number and title below to suit project requirements, specification practices and section content.

Part 1 GENERAL

1.01 SUMMARY

- A. Carbon Steel Free-Standing Overhead Clearance Structure, available with a fixed arm or optional hinge retractable arm, and a (HDPE) High density plastic Polyethylene "Height Guard Clearance Bar" which hangs below it.
- B. The Clearance Structure is designed for efficient containment and protection of outdoor structures and open spaces.
- C. Designed for high-traffic areas requiring secure, accessible entry points.
- D. Applications include commercial, industrial and residential projects.

1.02 MATERIALS

- 1. Size: Manufactured in two pieces – Hot rolled Carbon Steel 10'2" high vertical post and 9'7-15/16" horizontal beam.
- 2. Sheet Steel Gussets Welded to 11-13/16" x 11-13/16" plate with (4) 3/4" holes.
- 3. Finish: Powder coat, minimum thickness of 2.5 mils in silver, yellow, or black.
- 4. Hinge Mechanism
 - a. Type: Heavy Duty carbon steel hinges designed for high-cycle applications.
 - b. Configuration: Continuous or pivot hinge.
- 5. **HDPE Height Guard Clearance Bar**
 - a. High molecular weight HDPE Polyethylene. Designed for optimum balance of density, molecular weight and molecular distribution demonstrating maximum property advantages for large products that require high impact resistance. **Specifier note:** Specify size and Height Guard length. Custom lengths and colors are available. Contractor is responsible for giving accurate dimensions to Simon Marketing Group at the time of ordering.
 - b. Size: 5.0" Diameter x 80", 96" or 120" Long*
 - c. Size: 7.0" Diameter x 80", 96", 110", 120" or 144" Long*
*Custom lengths available.
 - d. Chains hanging: Bright Galvanized Double Loop Chain #1x36 (2 units includes (4) 3/16" Zinc plated snap hooks.
 - e. Self-Adhesive Vinyl Graphics Kit (Optional Graphics Available) "Clearance", two sets of Numbers for height description.
 - f. Reflective Stripes: Four (4) 3M Reflective stripes on each Height Guard.

1.03 DELIVERY, STORAGE & HANDLING

- A. Product ships from Inventory. Typical ship date is 5-7 working days. Contractor shall place order in a timely fashion to ensure construction schedule is not adversely impacted.
- B. Delivery: Materials are delivered in original, unopened, undamaged containers with identification labels intact.

Part 2 PRODUCTS

1.01 CARBON STEEL OVERHEAD CLEARANCE STRUCTURE WITH FIXED ARM (AND OPTIONAL HINGE RETRACTABLE ARM), AND HEIGHT GUARD OVERHEAD CLEARANCE BAR

A. National Distributor: Simon Marketing Group, LLC

- 1. Contact: Carol Berg, 1405 White Oak Drive, Kalamazoo, MI 49008 248-855-6647

Email: carol@simonmarketinggroup.net

Website: www.parkinglotsafety.com

PART 3 EXECUTION

1.01 Installation - Carbon Steel Free-Standing Clearance Structure

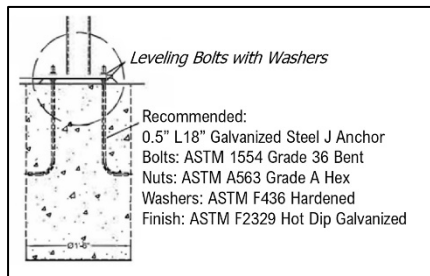
- A. It is recommended to use the optional J-Anchor Kit for mounting the clearance structure.
 - 1. (4) 5/8" Hex Nuts, (4) 5/8" Washers, & (4) 5/8" x 17-7/8" x 3-7/8" Galvanized Bent Anchors.
 - 2. Steel template for installation.
- B. It is also recommended to use Sonotubes® filled with foundation grade high strength concrete with steel rods enforcement, 30" deep or 4" deeper than local frost line to stabilize the galvanized bent anchors.
- C. **Installation – Height Guard Clearance Bar**
 - 1. Measure Height Opening and attach letters and numbers to Height Guard Clearance Bar.
 - 2. Attach eye hook to each end of the Height Guard Clearance Bar.
 - 3. Attach chain to eye hook. Affix to top of vehicle drive thru opening.



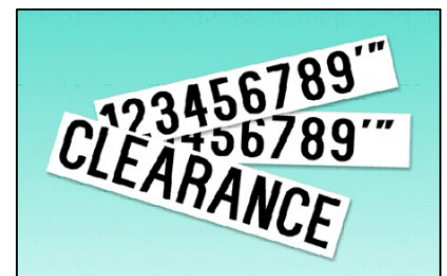
J-Anchor Kit



Sonotube



J-Anchor Kit Installation



Vinyl Graphics Kit



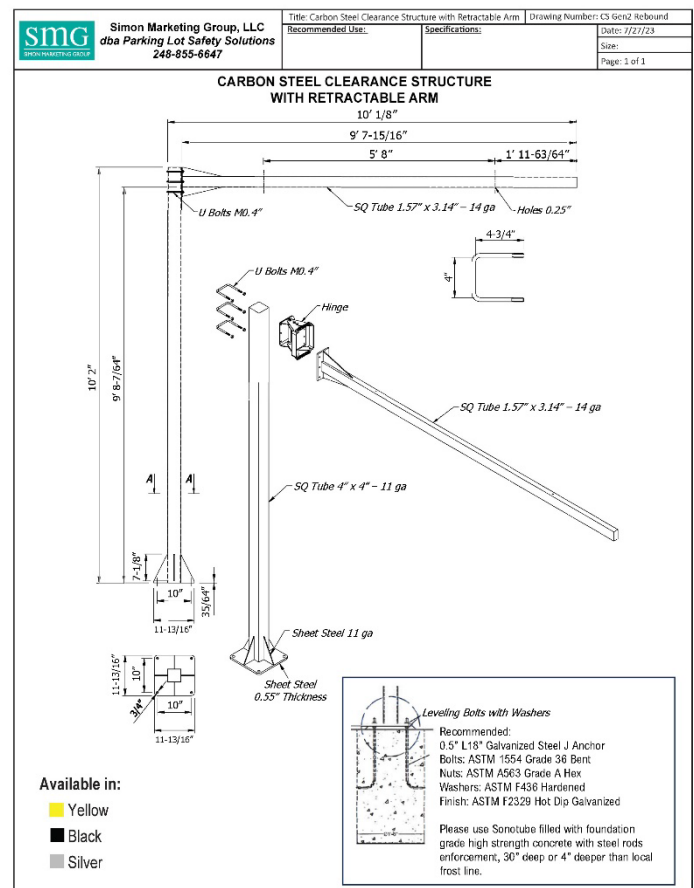
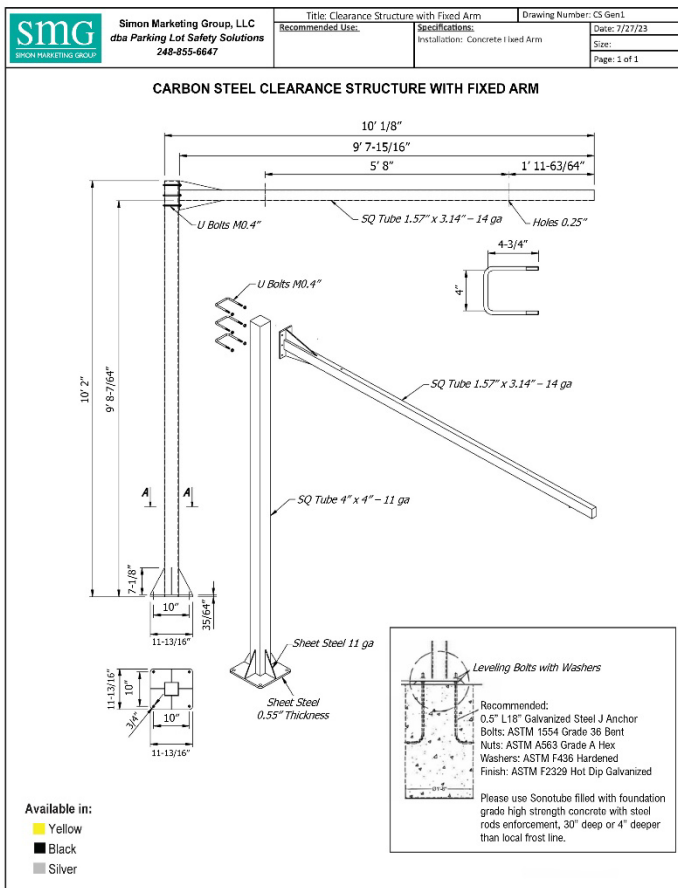
Height Guard Standard Colors
and Graphics

Optional Graphics

Carbon Steel Clearance Structure Finishes Silver, Yellow, Black



Installation Diagrams



[Click Here to Download Fixed Arm Structure Diagram](#)

[Click Here to Download Retractable Arm Structure Diagram](#)



Parking Lot Safety Solutions from Simon Marketing Group
1405 White Oak Drive • Kalamazoo, MI 49008 • 248-855-6647
parkinglotsafety.com



SBA WOSB
Woman Owned Small Business