



## Who we are

CMA Engineerings LLC is an associated company of Chiba Marine Japan Co. Ltd and Chiba Marine Korea Co., Ltd.

CMA Engineerings LLC originated from its roots in Japan. CMA lives the Japanese tradition built on trust, quality, and excellence. CMA's founding pillars are Trust, Quality, Fair pricing, and Customer Satisfaction. We understand the shipping business where expenses in off-hire and loss of hire cost dearly. Hence, we optimize our repairs to minimize the costs to our customers.



## Contact Us

CMA Engineerings LLC  
6701 Dixie Dr, Houston, TX 77087, USA

Kayden Kim: Managing Director  
Email: [service@cmaengineering.org](mailto:service@cmaengineering.org)  
Email: [kayden@cmaengineering.org](mailto:kayden@cmaengineering.org)  
cell: +1 214-738-7328

Zuriel Maldonado: General Manager  
Email: [Zuriel@cmaengineering.org](mailto:Zuriel@cmaengineering.org)  
Email: [info@cmaengineering.org](mailto:info@cmaengineering.org)  
cell: +1 713- 927- 2035  
[www.cmaengineering.org](http://www.cmaengineering.org)



# CMA Engineerings LLC

The result-driven Marine Repair Company



# Table of Contents

About us ..... 4

Heritage..... 2

Our commitment to service ..... 6

Pictures speak a thousand words.....7-13

Contact us.....14

Our customers .....17-20



# About us

## CMA Engineerings LLC



CMA Egneerings LLC was formed in the USA realizing the need of the industry to have a marine repair company. Led by experienced marine professionals and engineers who are truly passionate about solving problems of the ships and marine assets.

CMA is an associated company of Chiba Marine Japan Co. Ltd and Chiba Marine Korea Co., Ltd.

## Expertise domains



- Engine repairs | Marine auxiliary repairs
- Deck machinery and hull repairs
- Afloat repairs | workshop reconditioning
- Voyage repairs | in-situ machining
- Hull structure and piping work
- Controls and automation repairs
- Replacement of machinery
- Installation support
- Spares supply
- Inspections and audits
- Layup and reactivation support



## Heritage

CMA Engineerings LLC or commonly known as Chiba Marine originates from its roots in Japan and lives the Japanese tradition built on trust, quality, and excellence. CMA's founding pillars are Trust, Quality, Fair pricing, and Customer Satisfaction.

**We live the "Omotenashi Spirit".**

The "Omotenashi" refers to a philosophy of "selfless customer service". It means "anything to do with delivering a great Customer experience".

---

***The result-driven marine service company....***



---

We do not use emergency repair as an occasion to mark up our tariff. Our teams are available 24x7, even in countries like the US, where service providers often limit themselves to designated working hours.

Our company is operated by experienced marine Engineers who've sailed as career Chief Engineers and technical Superintendents. Show casing decades of workshop experience and others specializing in each machinery segment. They possess extensive knowledge in marine engineering.

CMA Engineerings LLC is registered with EVERLLENCE (MAN B&W) and YANMAR as a trusted service provider. The company engages certified and trained engineers. CMA employs class-certified welders for vessel structural repair and piping work.

We currently provide port to port service across the USA.



## Our commitment

### Values



Fair dealing and fair pricing with all clients. Building a long-term partnership with our clients. Keeping the focus on delivering results.

### Mission



Assist our clients in maximizing asset utilization and minimizing off-hires. Solving engineering problems for smooth vessel operation.

Living the "Omotenashi Spirit".

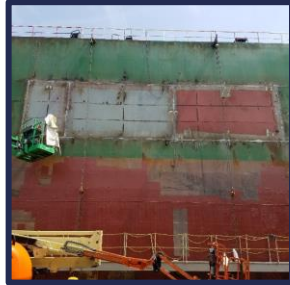
### Vision



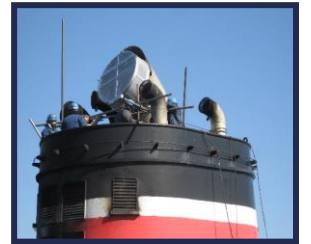
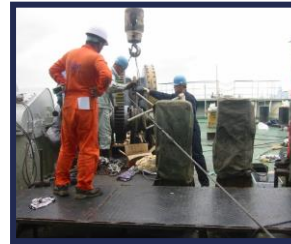
To be a trusted partner for ship maintenance requirements and cater service irrespective of the ship's location.



## HULL AND DECK MACHINERY REPAIRS



## HULL AND DECK MACHINERY REPAIRS

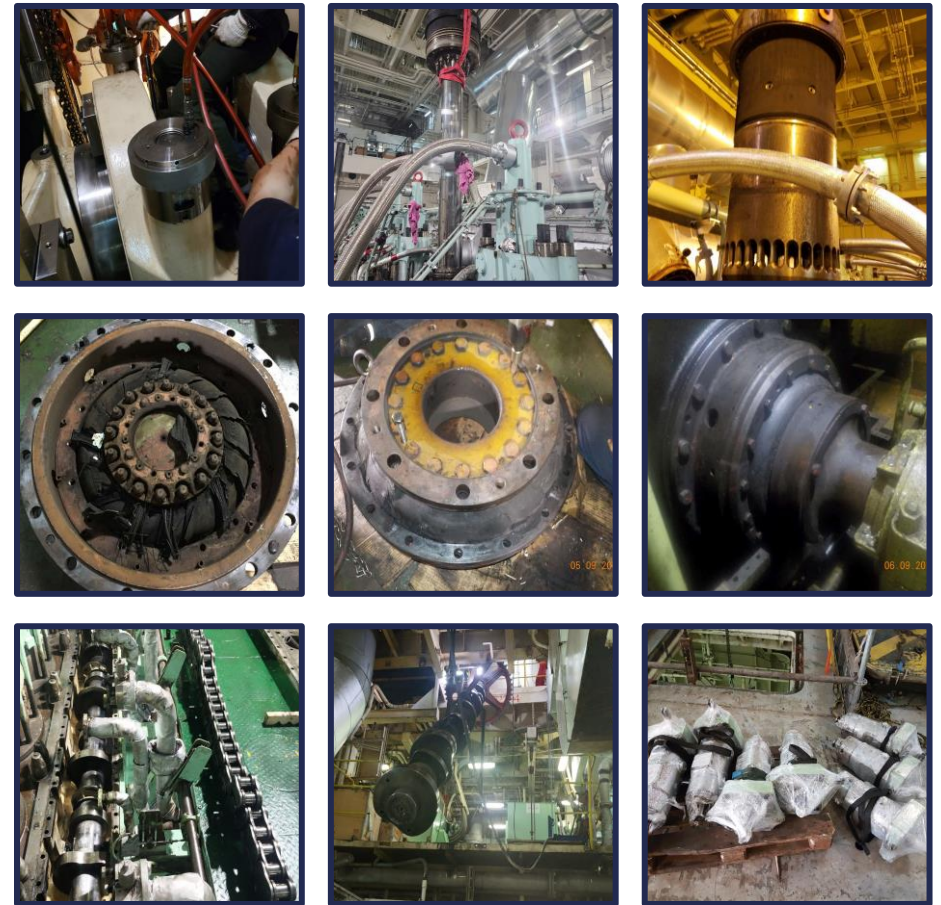




## MAIN PROPULSION ENGINE REPAIRS



## MAIN PROPULSION ENGINE REPAIRS





## AUX ENGINE AND GENERATOR REPAIRS

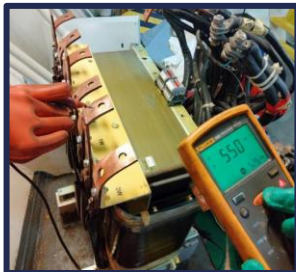
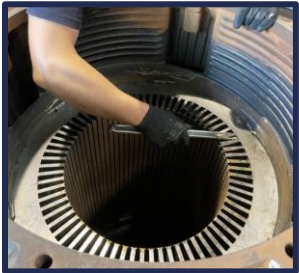


## AUX MACHINERY AND PIPING REPAIRS





## ELECTRICAL REPAIRS



## CONTACT US!



### CMA Engineerings LLC

6701 Dixie Dr. Houston, TX 77087, USA  
Kayden Kim: Managing Director

Cell: +1 214 738 7328

Cell: +1 713 927 2035

E-mail: [service@cmaengineeing.org](mailto:service@cmaengineeing.org)

E-mail: [info@cmaengineering.org](mailto:info@cmaengineering.org)

[www.cmaengineering.org](http://www.cmaengineering.org)

### Chiba Marine Korea Co., Ltd.

21-1, Gupyeong-Ro, (Gupyeong-Dong) Saha-Gu, Busan, 49454, South Korea

W.S. Choe: Managiang Director

Tel: +82-51-418-8998 /Fax: +82-52-428-5880

E-mail: [cmk@chibamarine.kr](mailto:cmk@chibamarine.kr)

E-mail: [wschoe01@daum.net](mailto:wschoe01@daum.net)

### Chiba Marine Japan Co., Ltd.

Mitsuyu Kawakami: Managing Director/ Engineer In-Charge

661-0024 2-1-1-407 SANTANDA CHO AMAGASAKI CITY HYOGO PRE JAPAN

Tel: +81 6-7172-3765/ Fax: +81 6 7182-9865

Cell: +81 80-5093-7463 (SNS: What's App)

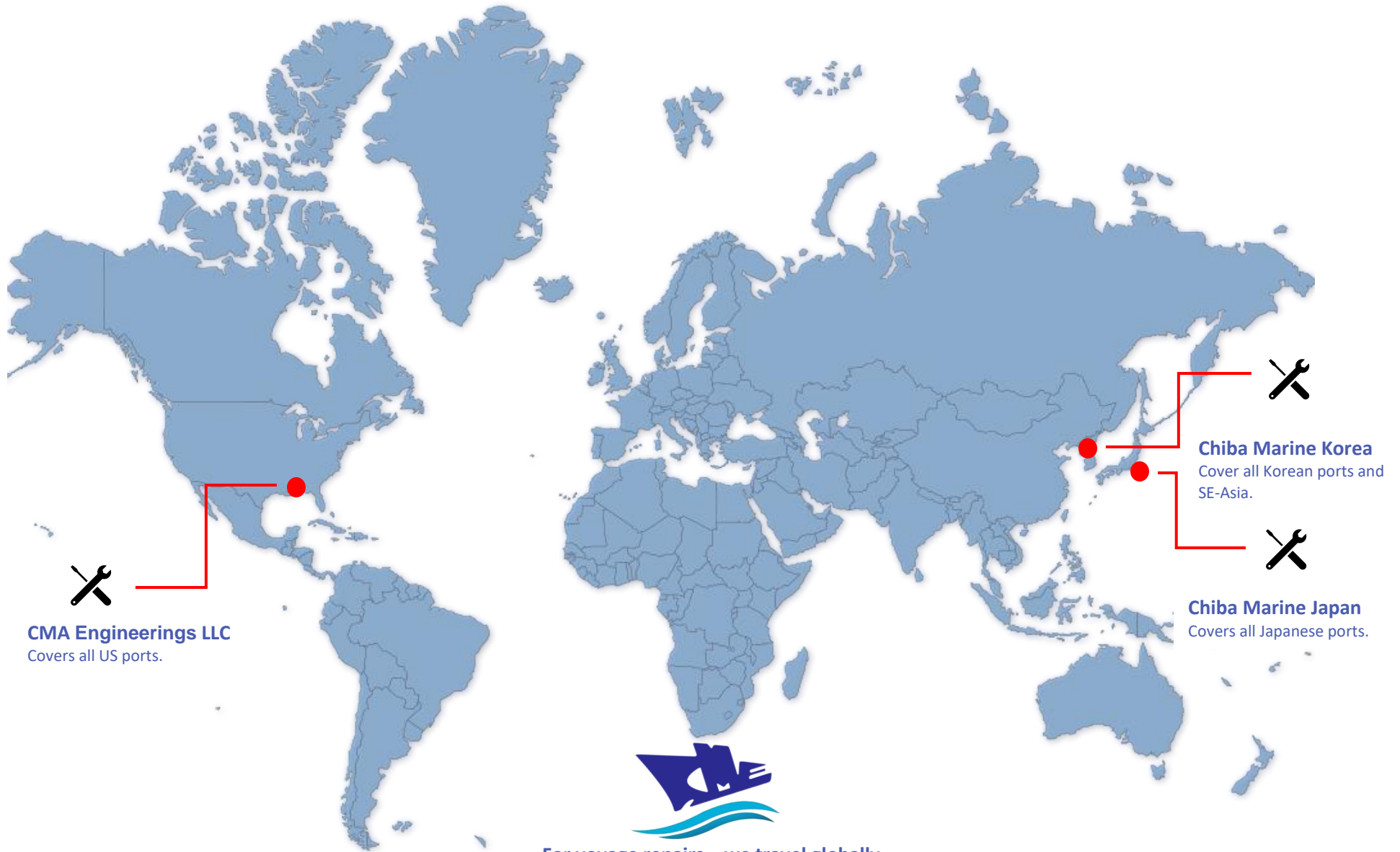
Email: [cmj@chibamarinejapan.jp](mailto:cmj@chibamarinejapan.jp)

Personal Email: [m.kawakami@chibamarinejapan.jp](mailto:m.kawakami@chibamarinejapan.jp)





## Chiba Marine Global Offices



For voyage repairs – we travel globally.



# Our customers

“K” Line - Kawasaki Kisen Kaisha, Ltd.



Chevron Corporation



Cummins Inc.



International Shipholding Corp.



Maersk Line



Matson Inc.



Anglo-Eastern



Columbia Shipmanagement, Greece



Fleet Management Ltd.



M. T. M. Ship Management Pte Ltd.



EVERLLENCE (MAN Diesel & Turbo (B&W))



MAN Diesel & Turbo

Mitsui O.S.K. Lines



Mitsui O.S.K. Lines



## Our customers

Navios Maritime Holdings Inc, Greece



NorthStar Ship Management



Northstar Ship Management Ltd

NYK Line - Nippon Yusen Kabushiki Kaisha



Pacific Basin Shipping Limited



Royal Caribbean Cruises



Santoku Senpaku Co., Ltd

SANTOKU SENPAKU CO.,LTD.



Heart to Earth

Synergy Marine Group



VR Marine Management Pte. Ltd.



Wallem Group



Yanmar Asia (Singapore) Corporation Pte Ltd

