

HAORI

Haori, the air conditioner
that respects your universe



TOSHIBA

 *Better Air Solutions*



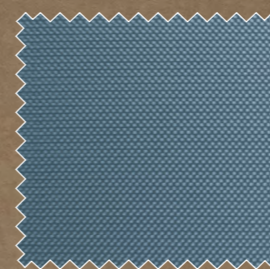
HAORI

TRULY
ELEGANT
DESIGN

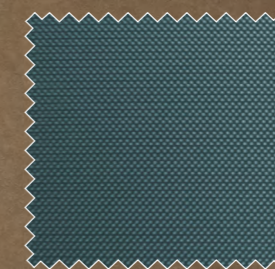
HAORI is featuring
a stylish textile
fabric cover

Fabrics with infinite possibilities.
Easy to dress, just peel and stick.

LET YOUR STYLE BE YOUR GUIDE



Bluish grey



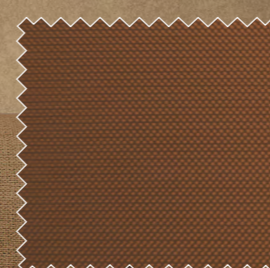
Dark grey



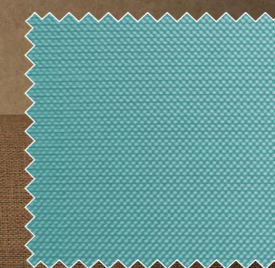
Light Grey



Grey beige



Dark brown



Emerald blue

HAORI



A+++
in cooling
and heating



Ultra-quiet system
Less than
19 dB(A)



Silent operation
Down to
37 dB(A)



TOSHIBA
ABSOLUTE
INDOOR
AIR QUALITY

The fabric cover in this image is a user made example

TREAT YOURSELF TO
JAPANESE QUALITY

HAORI

Design
and **reliability**

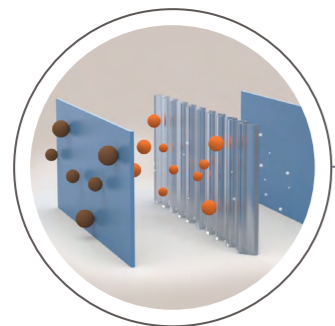
Innovation, efficiency, high reliability, energy savings, respect for the environment. These powerful values are at the heart of everything we do at Toshiba.

For over 50 years, Toshiba has been providing its clients with the guaranteed precision and expertise of flawless Japanese quality.

Toshiba's innovative
inverter technology

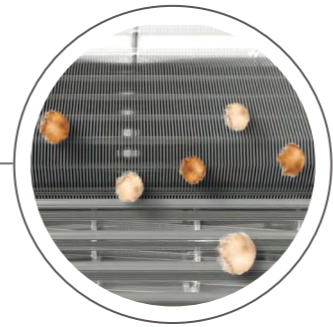
Toshiba's innovative rotary compressor technology combines exemplary performance with outstanding reliability. Minimising fluctuations to ensure a constant temperature, it increases efficiency while eliminating the risk of incidental noise.

Toshiba, Inverter Technology allows the HAORI to regulate heating and cooling capacity at all times, by adjusting the compressor speed to demand.



TOSHIBA
ULTRA PURE FILTER

Toshiba ultra pure filter captures up to 94% of PM 2.5

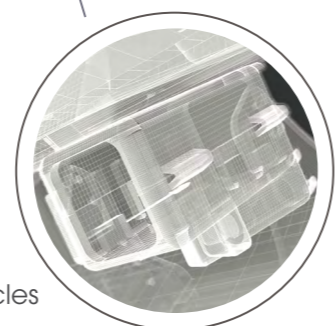


TOSHIBA
MAGIC COIL

Always as clean as new

TOSHIBA
PLASMA
IONIZER

Catches & neutralizes the contaminated particles





SOLUTION
WELL-BEING

MAKE YOUR AIR CONDITIONER **SMART**

Enhance your comfort
at home or away



This intuitive remote-control functions include:
Power select and ECO modes to reduce energy bills, Hi-power for rapid cooling or heating.

Toshiba HAORI remote control features a magnetic wall-mounted holder.



- **Energy monitoring**
- Smart speaker voice control functions compatible with **Google Home Assistant & Amazon Alexa**



HAORI - R32 Performance data

| Outdoor unit | | RAS-10J2AVSG-E1 | RAS-13J2AVSG-E1 | RAS-16J2AVSG-E1 |
|----------------------------------|-----------|-----------------|-----------------|-----------------|
| Indoor unit | | RAS-B10N4KVRG-E | RAS-B13N4KVRG-E | RAS-B16N4KVRG-E |
| Cooling capacity | kW | 2.5 | 3.5 | 4.6 |
| Cooling range (min. - max.) | kW | (0.89 - 3.20) | (1.00 - 4.10) | (1.20 - 5.30) |
| EER | W/W | 4.63 | 4.38 | 3.41 |
| SEER | | 8.60 | 8.70 | 7.80 |
| Energy efficiency class | C | A+++ | A+++ | A++ |
| Seasonal electricity consumption | kWh/a | 102 | 142 | 206 |
| Heating capacity | kW | 3.2 | 4.2 | 5.5 |
| Heating range (min. - max.) | kW | (0.90 - 4.70) | (1.00 - 5.30) | (1.10 - 6.30) |
| Pdesignh | kW | 2.5 | 3.2 | 4.00 |
| COP | W/W | 4.32 | 3.89 | 3.62 |
| SCOP | | 5.10 | 5.10 | 4.60 |
| Energy efficiency class | H | A+++ | A+++ | A++ |
| Seasonal electricity consumption | kWh/a | 684 | 876 | 1214 |

HAORI - R32 Physical data indoor unit

| Indoor unit | | | RAS-B10N4KVRG-E | RAS-B13N4KVRG-E | RAS-B16N4KVRG-E |
|-----------------------------------|--------------|----------|-----------------|-----------------|-----------------|
| Sound pressure level (h/q) | dB(A) | C | 41/19 | 43/19 | 45/21 |
| Sound power level (h) | dB(A) | C | 54 | 56 | 58 |
| Air flow (h) | m³/h - l/s | C | 600 - 166 | 670 - 186 | 690 - 180 |
| Sound pressure level (h/q) | dB(A) | H | 41/19 | 43/19 | 45/22 |
| Sound power level (h) | dB(A) | H | 54 | 56 | 58 |
| Air flow (h) | m³/h - l/s | H | 610 - 169 | 680 - 189 | 730 - 186 |
| Dimensions (hwxwd) | mm | | 300x987x210 | 300x987x210 | 300x987x210 |
| Weight | kg | | 11 | 11 | 12 |
| Remote controller | | | WH-UA01UE | WH-UA01UE | WH-UA01UE |

HAORI - R32 Physical data indoor unit

| Outdoor unit | | | RAS-10J2AVSG-E1 | RAS-13J2AVSG-E1 | RAS-16J2AVSG-E1 |
|--|--------------|----------|-----------------|-----------------|-----------------|
| Sound pressure level (h) | dB(A) | C | 44 | 46 | 48 |
| Sound pressure level (Silent CDU#2) | dB(A) | C | 37 | 39 | 40 |
| Sound power level (h) | dB(A) | C | 57 | 59 | 61 |
| Operating range | °C | C | -15~46 | -15~46 | -15~46 |
| Sound pressure level (h) | dB(A) | H | 46 | 48 | 50 |
| Sound pressure level (Silent CDU#2) | dB(A) | H | 39 | 43 | 43 |
| Sound power level (h) | dB(A) | H | 59 | 61 | 63 |
| Operating range | °C | H | -15~24 | -15~24 | -15~24 |
| Dimensions (hwxwd) | mm | | 550x780x290 | 550x780x290 | 550x780x290 |
| Weight | kg | | 26 | 30 | 33 |
| Compressor type | Toshiba | | DC Rotary | DC Rotary | DC Rotary |
| Flare connections (gas-liquid) | inch | | 3/8" - 1/4" | 3/8" - 1/4" | 1/2" - 1/4" |
| Minimum pipe length | m | | 2 | 2 | 2 |
| Maximum pipe length | m | | 20 | 20 | 20 |
| Maximum height difference | m | | 12 | 12 | 12 |
| Chargeless pipe length | m | | 15 | 15 | 15 |
| Refrigerant charging (R32) | kg | | 0.55 | 0.8 | 0.8 |
| Power supply | V-ph-Hz | | 230-1-50 | 230-1-50 | 230-1-50 |

C: cooling mode
H: heating mode



TOSHIBA Air Conditioning participates in the ECP program for Comfort Air Conditioners (AC). Check ongoing validity of certificate: www.eurovent-certification.com



Better Air Solutions



UK ENERGY SERVICES

Sustainable Cooling & Heating Solutions

Tel: 01249 474118

email: enquiries@ukenergyservices.com