

DVM GLOBAL EXPORTS LLP

2029, First Floor, Opp Modhwada, Chachar Chowk, Dolatkhana,
Sarangpur, Ahmedabad, Gujarat, PIN Code: 380001

Contact Person : Dipti Dalwadi

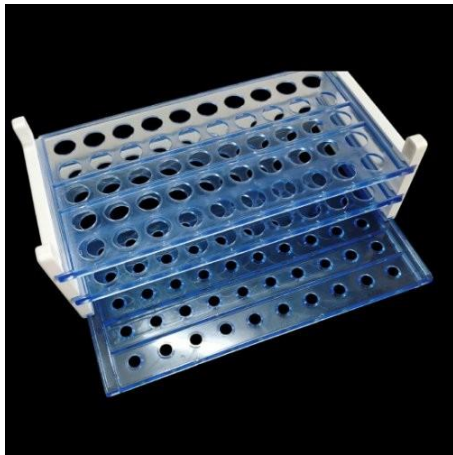
Contact Number : 9023125265

Email : info@dvmglobalexports.com

GST NO : 24AAAYFD5812F1ZB

PAN NO : AAYFD5812F

Website : www.dvmglobalexports.com



**Detachable Test tube
stand**



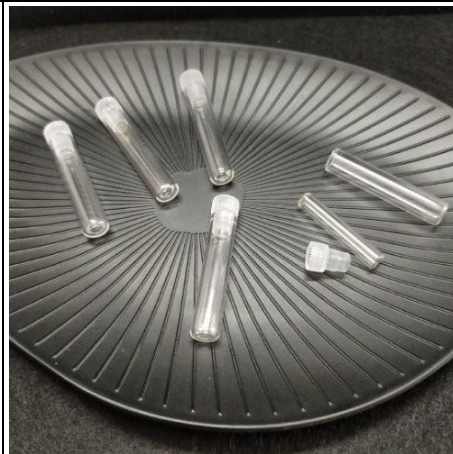
**LAB CHEM ,LEISHMAN 'S
STAN SOLUTION**



TIPS yellow 200 ul



**LAB CHEM ,SURGICAL
SPIRIT**



Vials set with cap



125 ml measuring cup



ETHANOL



**MUCAP, CAPILLARIES
TUBE, MICRO
CAPILLARIES TUBE**



200ul Filter tips Rack pack



FILTER PAPER



AMPOULE CUTTER



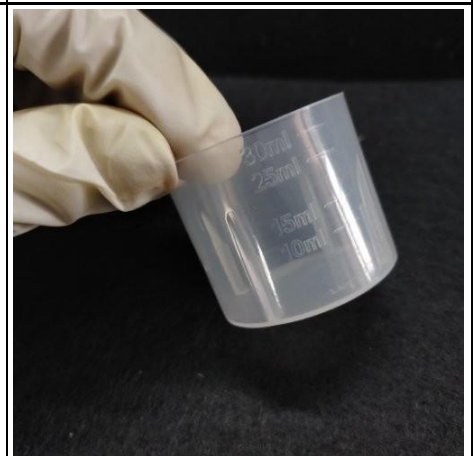
**MANWARD ALCOHOL
SWAB**



**MEDI + GRIP - ADHESIVE
BANDAGE**



**30 ML MEASURING CUP
- BELL SHAPE**



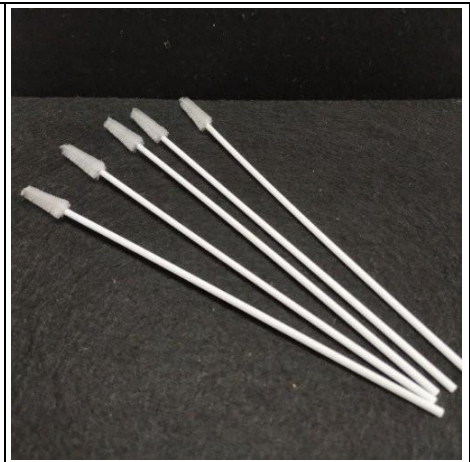
30 ML MEASURING CUP



**125 ML MEASURING CUP
WITH FLAPS INSIDE**



**DISPOSABLE
PAPSMEAR KIT**



CYTO BRUSH



**ADHESIVE BANDAGE
ANTISEPTIC**



SPIN COLUMN



STEEL LANCET



**RAPID TEST KIT
CASSETTE**



20 ML CONTAINER



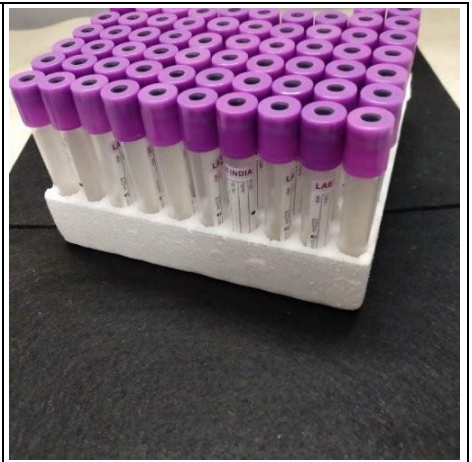
MICRO TIPS BOX



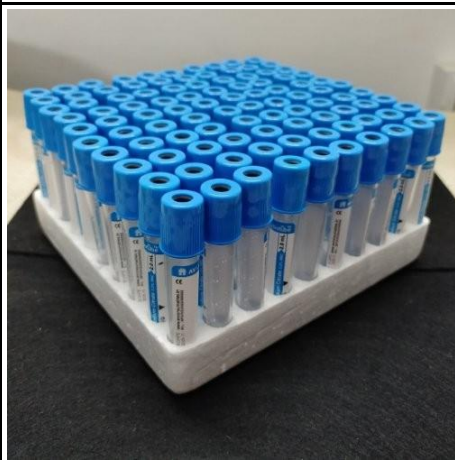
**MISSION - URINALYSIS
REAGENT STRIPS**



HITACHICUP



LAB INDIA BCT EDTA



**LAB INDIA BCT SODIUM
CITRATE TUBES**



**PETRI DISH WITH
PARTITION .**



**BUCKET FOR
CENTRIFUGE MACHINE**



**EXAMINATION - LATEX
GLOVES**



**EXAMINATION - NITRILE
GLOVES**



BEARD CAP



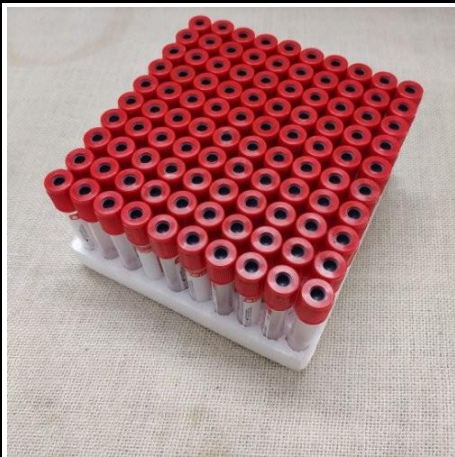
BOUFFANT CAP .



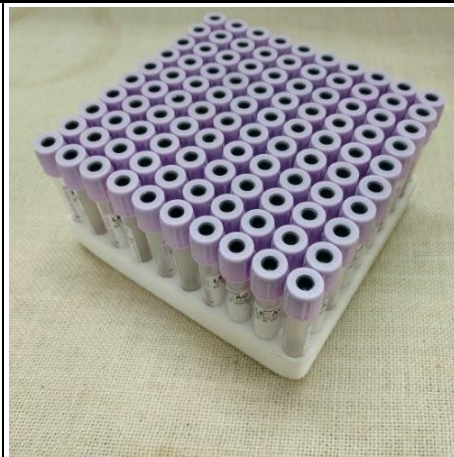
3 PLY MASK



BCT



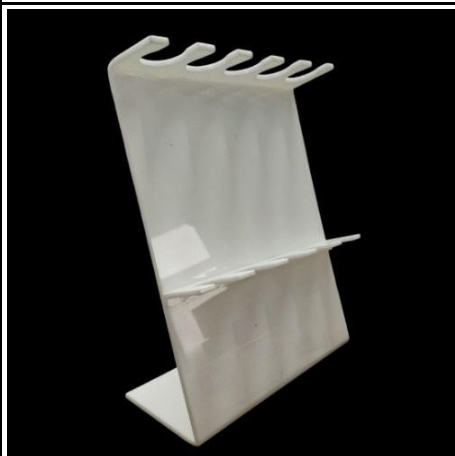
BCT - CLOT ACTIVATOR



EDTA K2



**ACRYLIC PIPETTE
STAND**



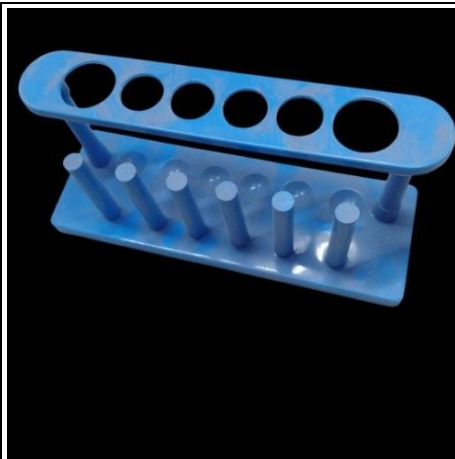
**ACRYLIC PIPETTE
STAND**



**VOLUMATIC SPACER
DEVICE WITH MASK**



TEST TUBE RACK BLUE



PIPETTE STAND



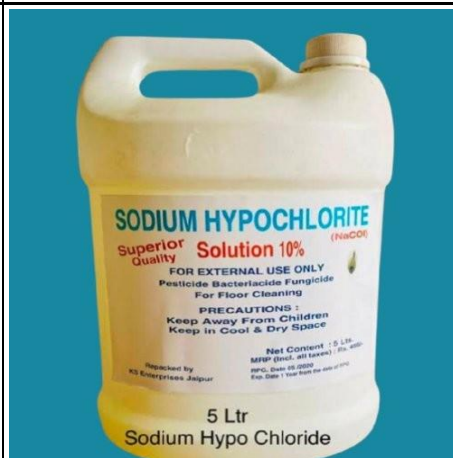
BOROSILICATE GLASS



**BOROSILICATE GLASS
TUBE**



AC+ URINE CONTAINER



**SODIUM
HYPOCHLORITE
SOLUTION 10%**



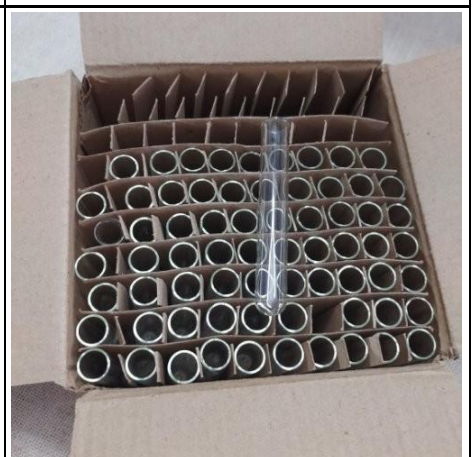
**DISPO VAN -STERILE
SINGLE USE
HYPODERMIC SYRINGE**



VELCRO TOURNIQUET



**BOROSILICATE GLASS
TUBE**



**BOROSILICATE GLASS
TUBE**



BCT - sodium flouride



KIDNEY TRAYS 15cm



KIDNEY TRAYS 20cm



KIDNEY TRAYS 24cm



KIDNEY TRAYS 30cm



DROPPER



**URINE CONTAINER
SAMPLE TRAY - 24
HOLES WHITE**



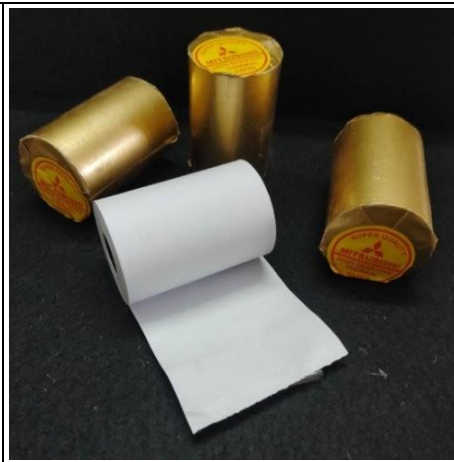
**URINE CONTAINER
SAMPLE TRAY -
SQUARE
24 HOLES WHITE**



test tube brush



ECG GEL



Thermal Paper Roll



COPLIN JAR



capillary tubes



**RUBBER BULB - BP
BULB**



PLASTIC LANCET



**DISPOSABLE MEDICAL
APRON**



PP BEDSHEET



NON WOVEN BEDSHEET



FOB TUBES - Fecal Occult Blood tubes.



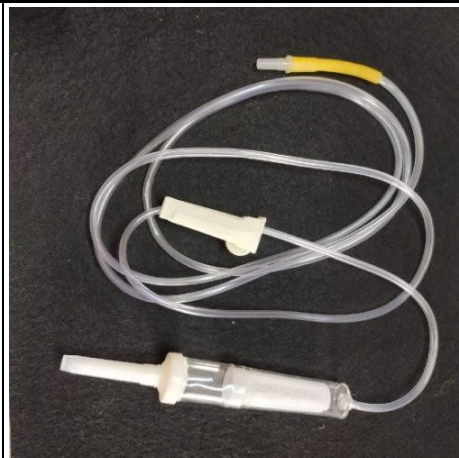
FOB TUBES - Fecal Occult Blood tubes.



white tips



ryles tube



INSUSION SET



INFANT FEEDING TUBES



SUCTION CATHETER



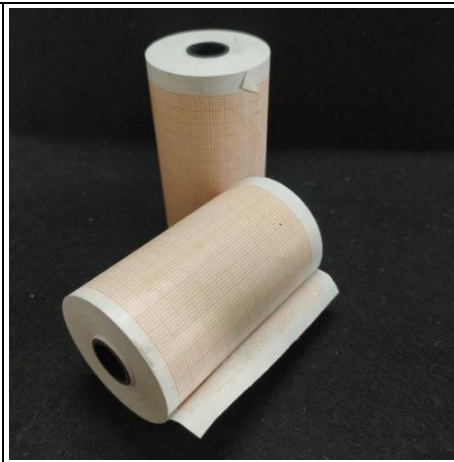
BLOOD ADMINISTRATION SET



3 WAYS STOP COCK



blood collection micro tubes with screw cap -non vacuum



ECG roll



storage vials



swab sticks



abc



centrifuge tube - 15 ml



AI DISPO SINGLE USE SYRINGE



plazma slide



pipette stand with drawer



swab sticks with tube



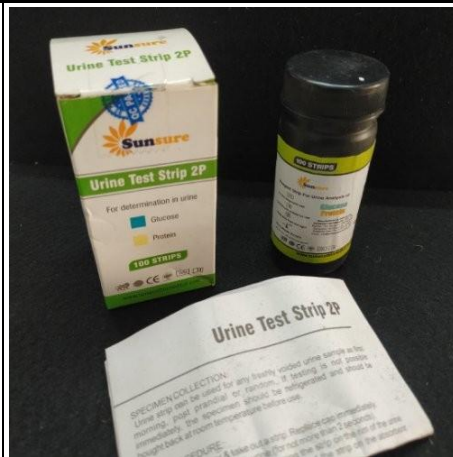
diamond pencil



centrifuge tube - 50 ml



micro tips box



URINE TEST STRIPS 2P



wash bottle



urine sediment observation plate



red cap container



AI-DISPO SYRINGE



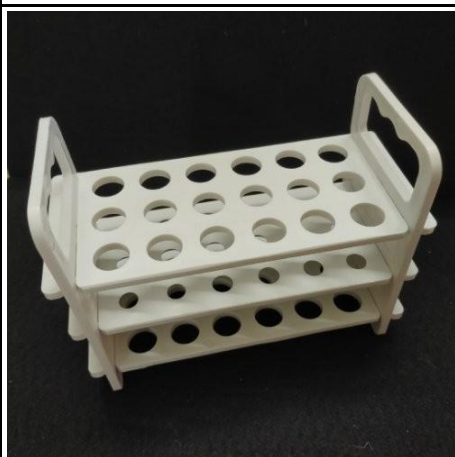
storage vial



**REAGENT DROPPER
BOTTLE**



PLAIN TEST TUBE



TEST TUBE STAND



**MICROCENTRIFUGE
TUBE**



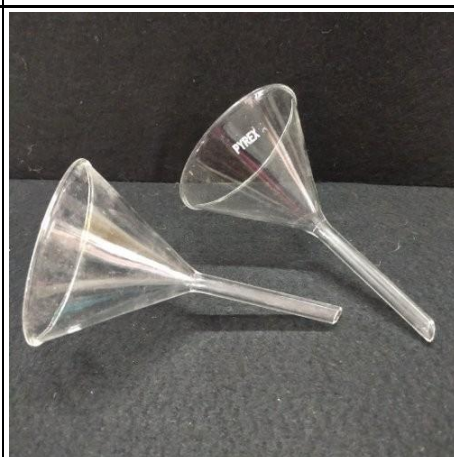
**METGENE MICROSCOPE
CLEAR SLIDES**



MICROSCOPE SLIDE



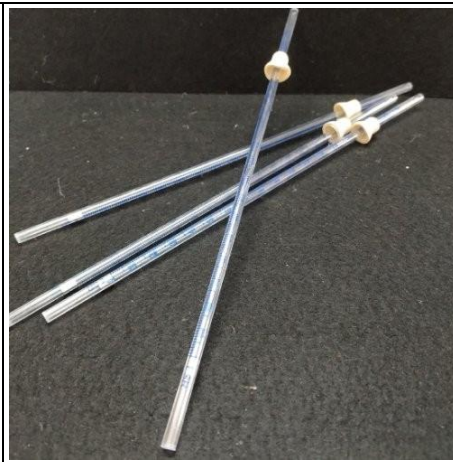
SILICA CRUCIBLE



glass funnels



collection swab



pasteur pipettes



**MICROPIPETTE TIPS
BLUE**



sample collection vials



**MICROPIPETTE TIPS
CLEAR TRANSPERANT
TYPE**



MICROPIPETTE



DIGITAL TIMER



MICRO COVER GLASS



**TEST TUBE HOLDER
STAND**



**TEST TUBE HOLDER
STAND**



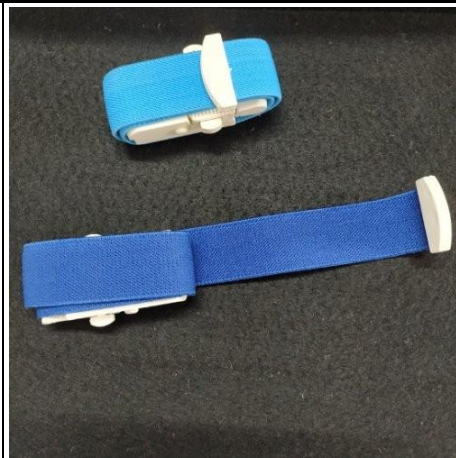
MICROPIPETTE



BOROSILICATE GLASS



DROPPER



**EMERGENCY
TOURNIQUET BANDS**



WASH BOTTLE



SLIDES



STETHOSCOPE



WOODEN STICKS



**FINGER TIP PULSE
OXIMETER**