



CATALOG

2024



OUR HISTORY

Bear Cabinetry was established in 2024. The founders aimed to create a company dedicated to providing high-quality, stylish cabinetry that combines durability with aesthetic appeal. The initial goal was to address a gap in the market for well-designed, reliable cabinetry solutions that met functional, budgetary, and design needs of homeowners and businesses.

As it started to gain traction, we began expanding the product offerings to include a wider range of cabinetry styles and options, catering to various tastes and needs, with many more additions to come as time goes on.

Bear Cabinetry is beginning to grow its market presence from local to regional and eventually national distribution. This expansion is supported by strategic partnerships, dealer networks, and increased production capabilities.

From the beginning, Bear Cabinetry has been committed to high standards of quality, craftsmanship, and customer satisfaction. This commitment is and always will be reflected in the attention to detail and use of premium materials.

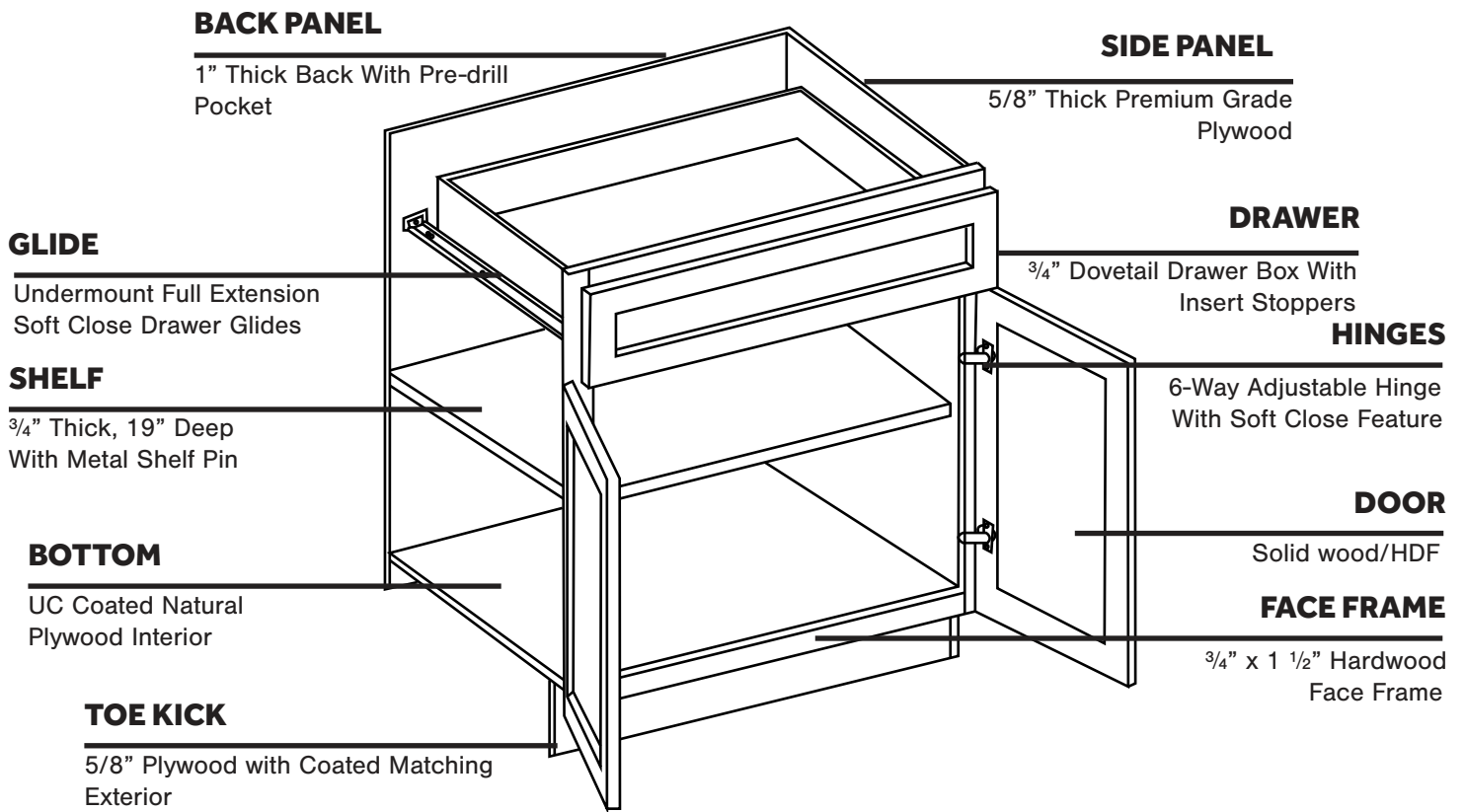
Our company's focus on customer needs and satisfaction helps us build a strong reputation in the industry, leading to positive word-of-mouth and repeat business for us and our dealers.

Bear Cabinetry has continuously adapted to changing market trends and customer preferences, incorporating new technologies and design trends into its offerings. The company has also embraced sustainability practices, including the use of eco-friendly materials and processes.

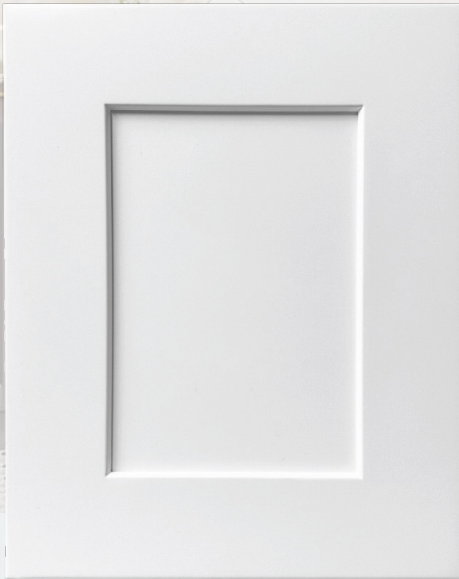
Looking forward Bear Cabinetry aims to continue its legacy of innovation and quality.



CABINET CONSTRUCTION



BEAR SERIES



BEAR WHITE



DESCRIPTION

The Bear White style, a classic and timeless design, embodies simplicity, functionality, and elegance. This style of cabinetry is a popular choice for kitchens and other spaces, known for its clean lines, versatility, and ability to complement a variety of design aesthetics.



DESCRIPTION

Bear Light Gray is a painted finish that gives the kitchen a modern industrial look without feeling too dark. This style offers an impressive minimalist masterpiece with enduring appeal.



BEAR LIGHT GRAY

BEAR NATURAL



DESCRIPTION

The Bear Natural style has a timeless and enduring quality. The inherent warmth and authenticity of the natural wood create a design that can transcend changing trends and remain a classic choice for homeowners seeking lasting elegance.



DESCRIPTION

The Bear Driftwood cabinet captures the essence of coastal living and rustic elegance, drawing inspiration from weathered wood and the natural beauty of driftwood. This unique cabinet style adds a touch of organic charm to any space, blending coastal aesthetics with a sense of well-worn, relaxed sophistication.



BEAR DRIFTWOOD

CUB SERIES



CUB WHITE



DESCRIPTION

The Cub White style is a classic and timeless choice for kitchen and bathroom cabinetry. It's characterized by its clean and bright appearance, making it a popular option for a wide range of interior design themes. Cub White exudes classic elegance that stands the test of time. It can suit both contemporary and traditional design schemes, offering a timeless quality that doesn't go out of style.



DESCRIPTION

The Cub Green represent a harmonious fusion of classic sophistication and nature's timeless beauty. The muted and tranquil hue of green exudes a sense of tranquility and rejuvenation, making it a popular choice for kitchens and living spaces.



CUB GREEN

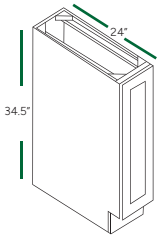
CUB BLUE



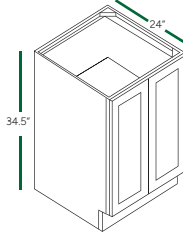
DESCRIPTION

The Cub Blue style is the epitome of sophistication and versatility. The deep, rich shade of blue brings an air of timeless elegance to kitchens and living spaces, offering a modern twist on a classic color. The color choice brings a modern edge to classic designs, creating a space that feels both sophisticated and up-to-date.

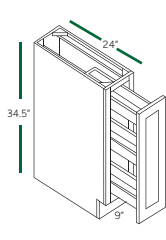
BASE CABINETS (34 1/2" HEIGHT, 24" DEEP)



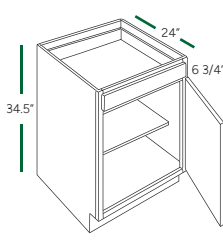
FULL DOOR BASE
BF0924 BF1524 BF2124 BF1224
BF1824



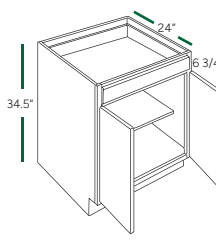
FULL DOOR BASE
BF2424 BF3024 BF3624 BF2724
BF3324



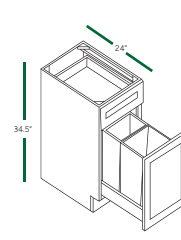
FULL DOOR BASE 9"
BF09-PO



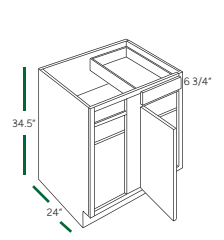
BASE SINGLE DOOR
B18B15B12 B21



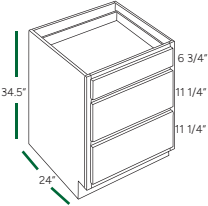
BASE DOUBLE DOOR
B30 B36B24 B33B27



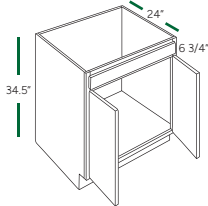
BASE WASTE BASKET
B18TR



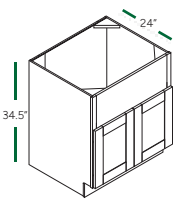
BLIND BASE
BBC42/45BBC39/42



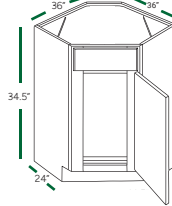
3 DRAWER BASE
DB12 DB21 DB30
DB15 DB24 DB33
DB18 DB27 DB36



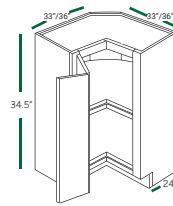
SINK BASE
SB36SB30SB24
SB33SB27



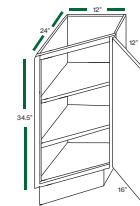
FARM SINK
FS33 FS36



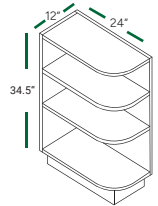
DIAGONAL SINK BASE
DSB36



LAZY SUSAN
LSB33 LSB36

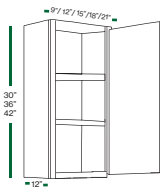


TRANSITIONAL BASE
BTL12BTR12



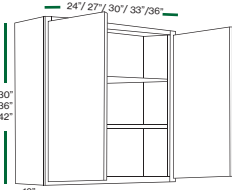
TRANSITIONAL BASE
BES12L BES12R

WALL CABINETS (12" DEEP)



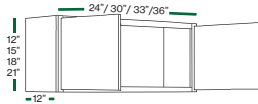
1 DOOR

W0930 W0936 W0942
W1230 W1236 W1242
W1530 W1536 W1542
W1830 W1836 W1842
W2130 W2136 W2142



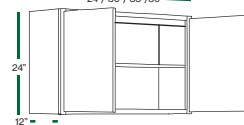
2 DOORS

W2430 W2436 W2442
W2730 W2736 W2742
W3030 W3036 W3042
W3330 W3336 W3342
W3630 W3636 W3642



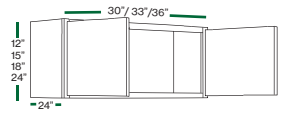
2 DOORS

W3012 W2418 W3021W2415 W3312
W3015 W3018 W3612 W3318W3315
W3618W3615



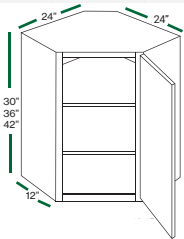
2 DOORS

W2424
W3024



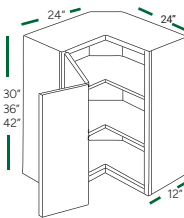
2 DOORS

W301224 W301524 W301824 W302424
W331224 W331824 W332424
W361224 W361824 W362424



WALL DIAGONAL CORNER

WDC2430 WDC2436 WDC2442



PIE CUT CORNER

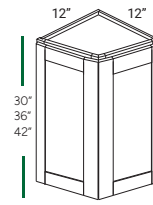
WPC2430 WPC2436 WPC2442



BLIND CORNER WBC2430

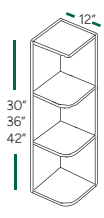
WBC2436 WBC2442
WBC3630 WBC3636 WBC3642

W3324
W3624



WALL ANGLE END

WAE1230 WAE1242WAE1236

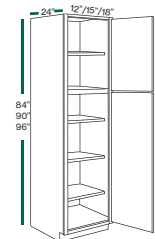


OPEN END

OE1230 OE1236 OE1242

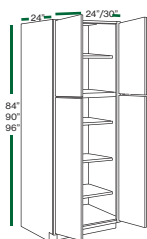
PANTRY TALL CABINETS

MICROWAVE CABINETS



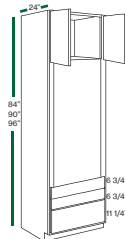
PANTRY 2 DOORS

TP128424 TP129024 TP129624
TP158424 TP159024 TP159624
TP188424 TP189024 TP189624



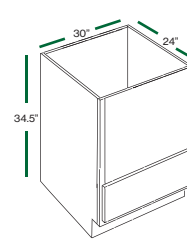
PANTRY 4 DOORS

TP248424 TP249024 TP249624
TP308424 TP309024 TP309624
TP368424 TP369024 TP369624



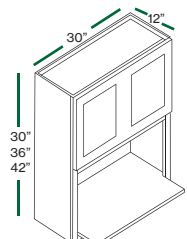
OVEN CABINET

OC3384 OC3390 OC3396



MICROWAVE BASE

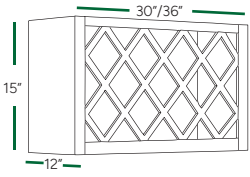
BMC30



WALL MICROWAVE

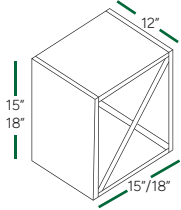
WM3030 WM3036 WM3042

SPECIALTY ACCESSORIES



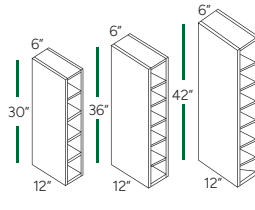
WINE RACK

WR3015 WR3615



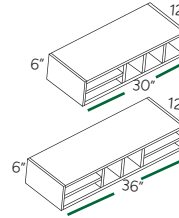
WINE RACK

WR1515 WR1818



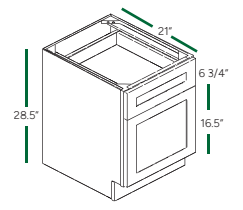
WINE CUBE

WC0630 WC0636 WC0642



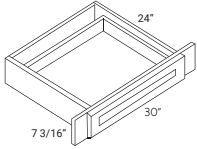
WALL ORGANIZER

WO306 WO366



FILE DRAWER BASE

FD1821



KNEE DRAWER

BRD390 KD880

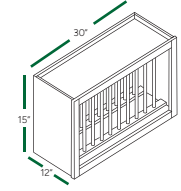
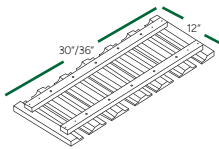


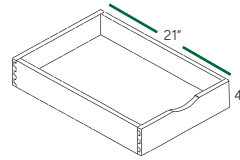
PLATE RACK

PR3015



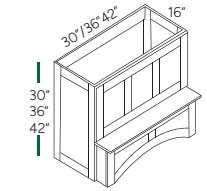
GLASS HOLD GL-30

GL-36



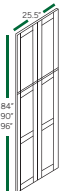
ROLL-OUT TRAY

RD15 RD24 RD33
RD18 RD27 RD36
RD21 RD30



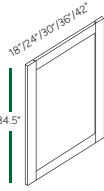
CUSTOM HOOD

RHA3030 RHA4230
RHA3630 RHA4236
RHA4242



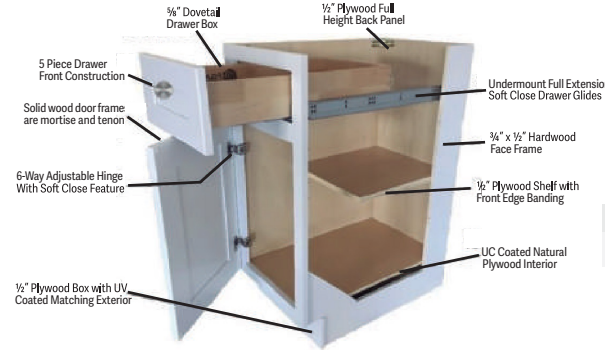
PANEL DOOR

WP-T84 WP-T90 WP-T96



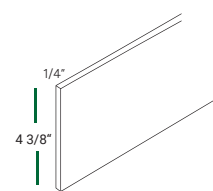
PANEL DOOR

WP-BASE 18 WP-W30
WP-BASE 24 WP-W36
WP-W42



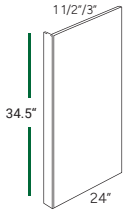
POST

SP336



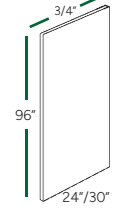
TOE KICK

TK8



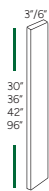
DISHWASHER PANEL

DWR1 DWR3



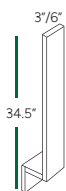
REFRIGERATOR PANEL

REF2496-1/2 REF3096-1/2/2
1/2



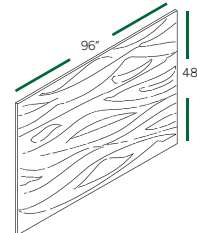
WALL FILLER

WF330 WF630 WF396
WF336 WF636 WF696
WF342 WF642



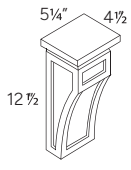
BASE FILLER

BF3 BF6



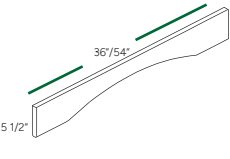
PANEL

PLY-48x96x1/4
PLY-48x96x3/4



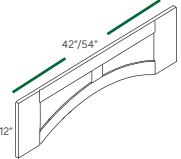
CORBEL

CMCB CML



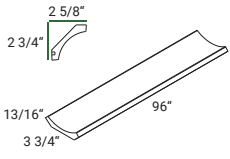
VALANCE VAR36

VAR54



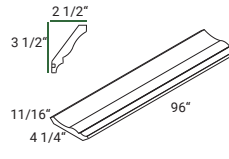
VALANCE

VARP42 VARP54



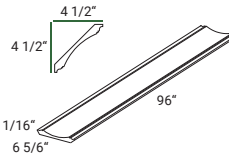
MOLDING

CM4



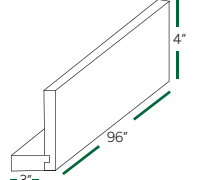
MOLDING

CM6



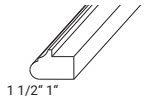
MOLDING

CM7

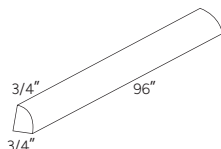


MOLDING

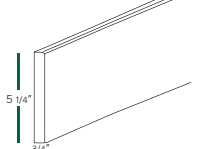
CMR4



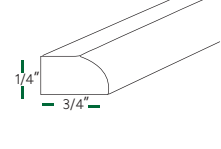
LIGHT RAIL MOLDING LRM



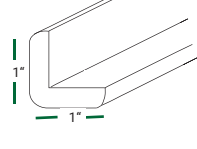
QUARTER ROUND MOLDING QRM



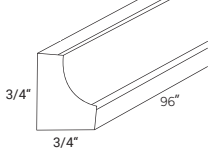
BASE BOARD MOLDING BBM5



SIMPLE SCRIBE SM8-S



OUTSIDE CORNER OCM8



INSIDE CORNER ICM8

Limited Warranty

5-Year Limited Warranty

Bear Cabinetry offers a five-year warranty covering defects in materials and workmanship. If an issue arises, Bear Cabinetry may choose to repair or replace the product.

This warranty does not cover issues resulting from improper storage or installation, and it has several exclusions, including:

- Costs associated with removing or installing materials.
- Natural variations and aging of wood.
- Damage from misuse, abuse, negligence, or unauthorized modifications.
- Products purchased without finish.
- Labor charges and incidental or consequential damages.

Certain conditions are not covered, including:

1. Natural aging or wood characteristics.
2. Damage from misuse, abuse, negligence, alteration, or non-residential use.
3. Installation of heating vents near cabinets.
4. Use with non-Bear Cabinetry products.
5. Final sales or clearance items.

For doors with warping or panel shrinkage of 1/4" or less, allow them to hang for one season before requesting a replacement. Ensure proper installation before initiating a claim.

For warranty claims, contact your local authorized Bear Cabinetry dealer.

For assistance with warranty claims, customers are encouraged to contact their local authorized Bear Cabinetry dealer.



BECOME A DEALER

VISIT OUR SITE

