

PROPERTY INFORMATION

Property: 778 Osos Street, Ste. A
San Luis Obispo, CA

Lease Rate: \$2.25/SF MG

Lease Size: ±740 sq. ft.

Type: Office

Zoning: Office

Available: Now

HIGHLIGHTS:

Approximately 740 SF of office space on the second floor in an elevator building. Situated on the corner of Mill + Osos Streets, downtown San Luis Obispo one block from the Court House.

FOR LEASE
±740 SQ. FT. PRIME OFFICE SPACE



CONTACT:

ROD TRUJILLO

OWNER/BROKER

DRE #01388764

CELL: 805.703.0999

ROD@TRUJILLO-GROUP.COM

The information contained herein has been obtained from the owner of the property or from other sources deemed reliable. While we have no reason to doubt its accuracy, we do not guarantee it.

TRUJILLO 
Commercial Real Estate
GROUP

1308 Monterey Street Suite 250 | San Luis Obispo, CA 93401

www.Trujillo-Group.com

PROPERTY PHOTOS

FOR LEASE
±740 SQ. FT. PRIME OFFICE SPACE



TRUJILLO 
Commercial Real Estate
GROUP

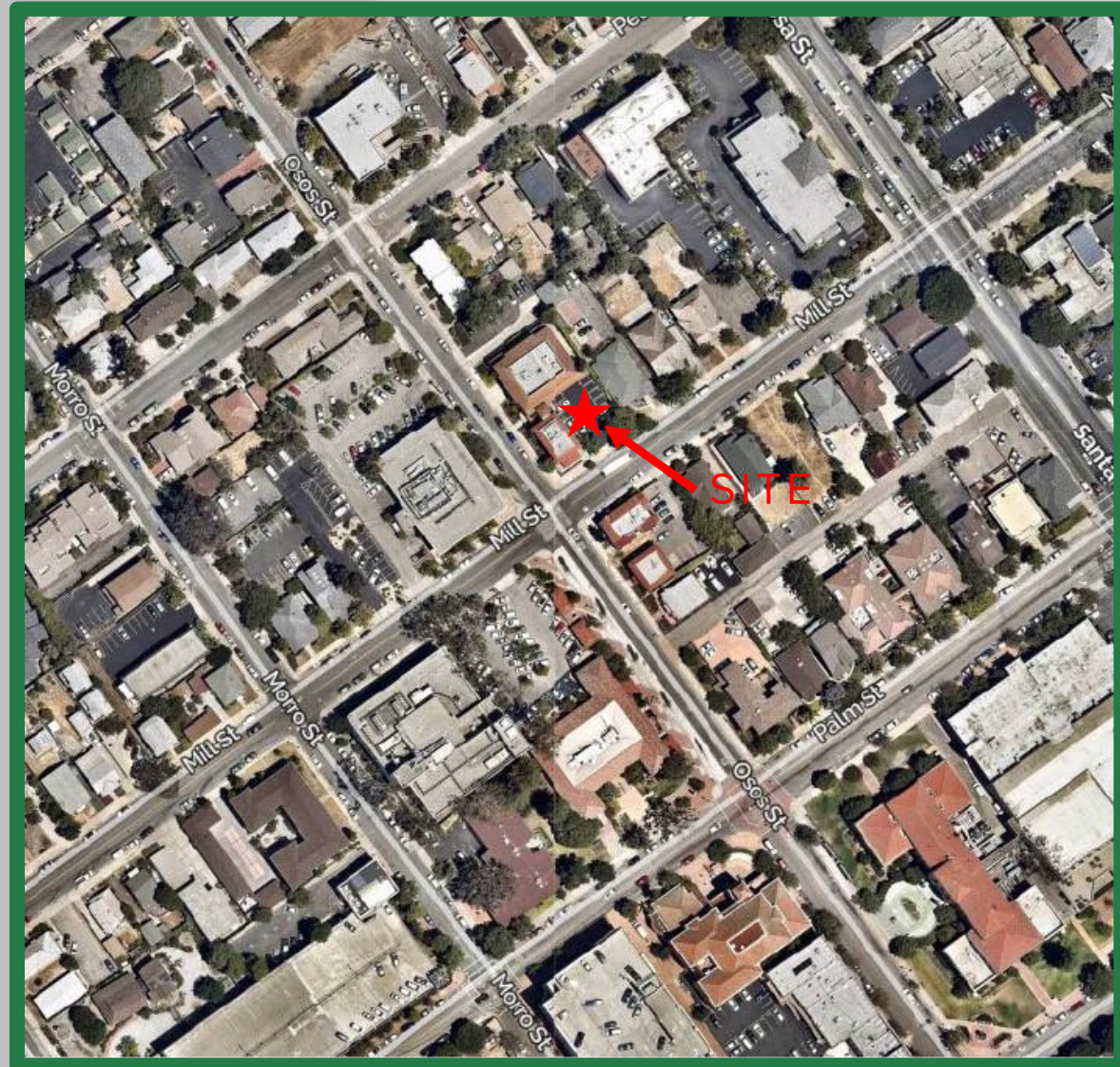
1308 Monterey Street Suite 250 | San Luis Obispo, CA 93401

www.Trujillo-Group.com

The information contained herein has been obtained from the owner of the property or from other sources deemed reliable. While we have no reason to doubt its accuracy, we do not guarantee it.

LOCATION MAP

FOR LEASE
±740 SQ. FT. PRIME OFFICE SPACE



CONTACT:

ROD TRUJILLO
OWNER/BROKER
DRE #01388764
CELL: 805.703.0999
ROD@TRUJILLO-GROUP.COM

TRUJILLO 
Commercial Real Estate
GROUP

1308 Monterey Street Suite 250 | San Luis Obispo, CA 93401

www.Trujillo-Group.com

The information contained herein has been obtained from the owner of the property or from other sources deemed reliable. While we have no reason to doubt its accuracy, we do not guarantee it.