

Gary Noland

KIRCHNERISM

*from Six and a Half Pieces for Piano*

Op. 8, No. 2



Freeland Publications

Gary Noland

KIRCHNERISM

*from Six and a Half Pieces for Piano*

Op. 8, No. 2

Copyright © 1986 by Gary Noland / Seventh Species Publications  
Cover Illustration by Gary Noland  
All Rights Reserved • BMI

**Freeland Publications**

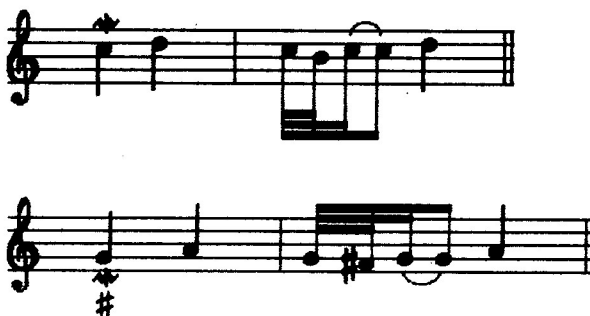
13080 Princeton Court, Lake Oswego, OR 97035, USA  
(503) 635-1216 • [species7th@centurylink.net](mailto:species7th@centurylink.net) • [www.garynolandcomposer.com](http://www.garynolandcomposer.com)

## NOTES:

1. Please note that all trills, long and short, should be played starting with the upper auxiliary note:



2. Mordents are played thus:



3. The glissandi in the *Proverb* should be played on black and white keys simultaneously (as indicated).

4. *Optional*: "A-eeet-a Garrlic-a!" ("eat garlic!" with a Sicilian accent) may be shouted by a chorus of up to five hundred voices directly prior to the performance of the last piece. It is recommended that all participants be attired in garlic T-shirts and / or pink jump suits. After the performance, garlic vegetable curry with mango chutney should be served to audience.

## 2. "Kirchnerism"

by Gary Noland

dedicated to Leon Kirchner.

**Andante**

**mp**

**p** **mp** **mf**

**rit. ----- a tempo**

**p** **f** **ff**

\*See NOTES 2, page 2.

dim.

This system contains two staves of music. The upper staff features a melodic line with several slurs and accents. The lower staff provides a harmonic accompaniment with chords and moving lines. A dynamic marking of *dim.* is placed at the end of the system.

rit. ----- a tempo

*mp* *p* *pp* *p*

This system is divided into two parts by a dashed line. The first part is marked *rit.* and the second part is marked *a tempo*. The music includes various dynamic markings: *mp*, *p*, and *pp*. There are also slurs and accents throughout the system.

*dim.*

This system continues the musical piece with two staves. It features a prominent slur in the upper staff and a triplet in the lower staff. A dynamic marking of *dim.* is present.

rit. -----

*mp* *p* *pp*

This system is also divided into two parts by a dashed line. The first part is marked *rit.* and the second part is marked *a tempo*. Dynamic markings include *mp*, *p*, and *pp*. The system concludes with a final chord in the lower staff.