



Culture Shock

[www.culture-shock.tn](http://www.culture-shock.tn)

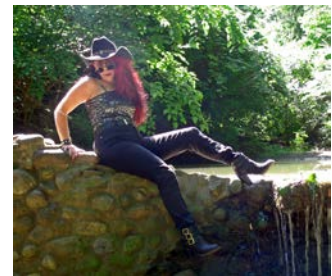


Culture Shock is a group of individual musicians from Northeast Ohio that have come together in pursuit of a common cause; to bring culture back to music and to bring you an artwork with the music that lives in each of us.

Culture Shock started as Kimberly Wilson's phone number on a piece of paper that sat for a year or more in a candleholder at Michael Briney's apartment. From humble roots as a five piece cover band beginning in the year 2000 in Canton, Ohio consisting of Michael, Kimberly, Gene Lesnewski, Don Aukerman, and Drew Miller, over the years we've gone through several member changes (with Doug Rozenek replacing Drew in early 2001 and Gene & Don leaving the band in 2004) and as many ups and downs personally and professionally.



Through sheer force of will or stubborn bullheadedness, depending on your perspective, we have persevered and are still rockin'. In 2003 Kimberly Wilson became Kimberly Rozenek and in 2005 Beverly Richards and John Borzea joined the band. This line-up set the ground work for where we are today with the release of the debut CD "Celebrity" which is available from CDBaby (<https://store.cdbaby.com/Artist/CultureShock1>) or on our website. ([www.culture-shock.us](http://www.culture-shock.us))



In 2012 Culture Shock went back into the studio to begin recording our second CD "Stop and Hear the Music". Over the course of the next 5 years several more obstacles were thrown in our way; but we kept on working.



In February 2017, Adrian Muica joined the band as our new Rhythm and Auxiliary Lead Guitarist. In July 2017, Beverly Richards left the band for family and personal reasons. We wish her the best!

Currently the band is finishing the final mix-down and mastering of "Stop and Hear the Music" and polishing the stage show in anticipation of our long awaited return to the stage!



Our purpose is to tell a story and evoke emotions with our music. This is our lives symphony and we take great pride in what we're creating. We hope you will enjoy it...



[www.culture-shock.us](http://www.culture-shock.us)

Facebook: @CultureShockUS

Twitter: @CultureShockUS

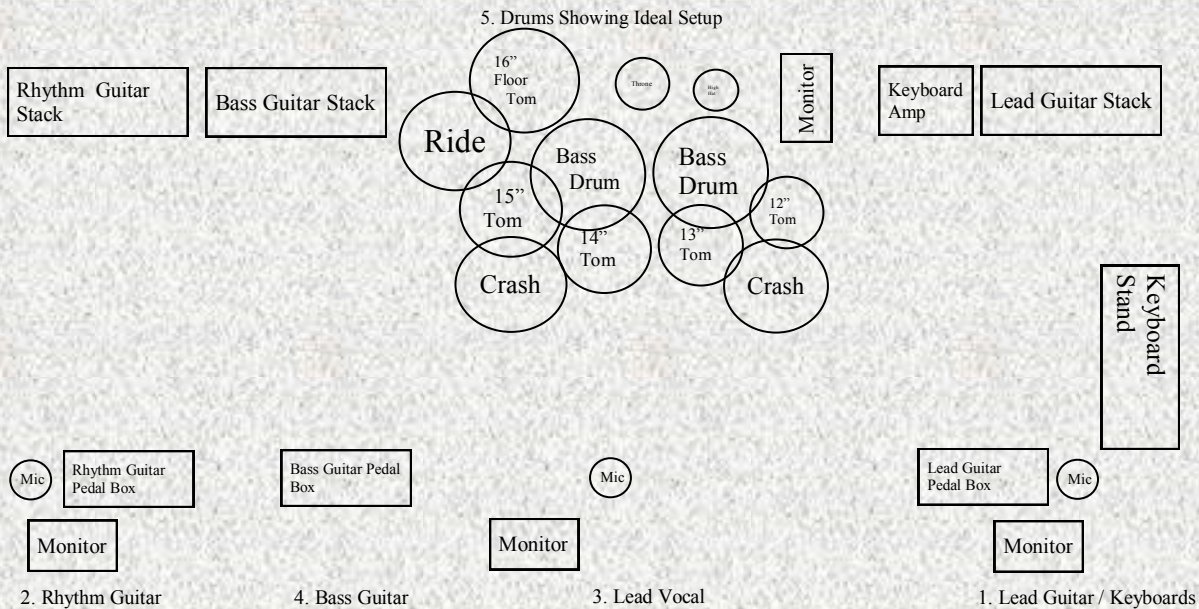
ReverbNation: @CultureShockUS

numberonemusic.com: @CultureShockUS

Lincoln Claar Sr. CEO - Knightstalker Records, LLC - Phone: 330-990-2305 - Email: [knight.stalker.records2016@gmail.com](mailto:knight.stalker.records2016@gmail.com)

Press: Knightstalker Promotions, LLC - Beth Anslow - Email: [Knightstalkerpromotionsllc@gmail.com](mailto:Knightstalkerpromotionsllc@gmail.com)

**Culture Shock takes professionalism very seriously. We want to make sure that everyone has a rewarding experience and build lasting business relationships. Below you will see our ideal stage plot and other pertinent information that you may need as a venue, sound professional or talent buyer.**



**1. Lead Guitar / Keyboards**

Fender 4x12 Stack  
 Wireless System (Provided by Culture Shock)  
 Roland Keyboard Amp  
 (2) Keyboards (Double Stacked Stand)  
 Mic & Stand (Boom preferred) for backing vocals  
 Monitor

**2. Rhythm Guitar**

Marshall Amp w/ 4x12 Cabinet  
 Mic & Stand (Boom preferred) for backing vocals  
 Monitor

**3. Lead Vocal**

Wireless Handset (Provided by Culture Shock)  
 Mic Stand  
 Monitor

**4. Bass Guitar**

Behringer 450 Bass Amp (w/direct out)  
 Hartke 2x15 Cabinet  
 Wireless System (Provided by Culture Shock)  
 Wireless Headset Mic (Provided by Culture Shock)  
 For lead & backing vocals

**5. Drums (Prefer to use own)**

Ideal:

- (4) Mounted Toms (12", 13", 14", 15")
- (1) Floor Tom (16")
- (2) Bass Drums (24")
- High Hat
- Ride
- (2) Crash (18")

Wired Headset Mic (Provided by Culture Shock)

Monitor

Full kit ideal setup measures 5'x8'

Minimum:

- (2) Mounted Toms (14", 15")
- (1) Floor Tom (16")
- (1) Bass Drum (24")
- High Hat
- Ride
- (1) Crash (18")

**Additional Information:**

**Touring Region:** Culture Shock is based in Canton, OH with a primary touring region of the Midwest and East Coast.

**Style:** 70's/80's style or iginal melodic rock

**Set Info / Live Show:** Culture Shock is available to play a show of approximately 45 minutes to 1 1/2 hours. Shows may consist of material from the debut CD "Celebrity" released in 2010 as well as music from the upcoming "Stop and Hear the Music" CD.

**Pricing / Booking Info:** Please contact Lincoln Claar Sr. - Knightstalker Records @ [knight.stalker.records2016@gmail.com](mailto:knight.stalker.records2016@gmail.com) or (330) 990-2305

**Band Website & Contact Info:** Please feel free to contact us through our website @ [www.culture-shock.us](http://www.culture-shock.us)