

ΖΦΒ



ZETA PHI BETA SORORITY, INCORPORATED

*Membership
Recruitment*

Dr. Stacie NC Grant, International President & CEO

Gina Merritt-Epps, Esq., International First Vice President for Membership

OUR FOUNDATION



Arizona
Cleaver Stemmons



Pearl
Anna Neal



Myrtle
Tyler Faithful



Viola
Tyler Goings



Fannie
Pettie Watts

THE FIVE PEARLS

Zeta Phi Beta Sorority, Incorporated is an international women's organization that has established itself as the foremost network of socially and politically conscious activists working to empower disenfranchised communities.

Shortly after World War One, during a time when women were still fighting for the right to vote, during the worst and longest economic recession to ever hit the United States, and on the very day the Volstead Act became effective, Zeta Phi Beta Sorority, Incorporated was birthed.

On January 16, 1920, five trailblazers at Howard University in Washington D.C.: Arizona Cleaver Stemmons, Pearl Anna Neal, Myrtle Tyler Faithful, Viola Tyler Goings and Fannie Pettie Watts, sought to depart from established organizations and founded a new sisterhood predicated on the precepts of Scholarship, Service, Sisterhood and Finer Womanhood.

Only Zeta has been and continues to be the "Sorority of Firsts" creating best-in-class educational programming models like Stork's Nest and Z-HOPE and a family of youth and adult auxiliary groups to advance our local communities.

With more than 130,000 members initiated, Zeta has become one of the world's for most movements for social justice and civic change. Members of Zeta are called to a higher purpose of Finer Womanhood. Zeta women are achievers and leaders in every field in more than 800 communities across the United States, Africa, Asia, the Caribbean and Europe.

BECOMING A ZETA



Although membership in Zeta Phi Beta Sorority, Incorporated, is by invitation only, we encourage interested women with a track record of community service and currently pursuing a baccalaureate degree or in possession of a baccalaureate degree to contact a chapter in your local area for more information.

The required way to show formal interest in membership is attending an Informational Interest Meeting hosted by Zeta Phi Beta Sorority, Incorporated. You are welcome to bring a resume. Attendance at the Informational Interest Meeting does not guarantee that an invitation to membership will be extended.

EDUCATIONAL STANDARDS - GRADUATES

- Bachelor's level degree conferred from a four-year college or university that meets the sorority's accreditation standards.
- If applying within three (3) years after graduating with a bachelor's degree, must have either earned at least a cumulative 2.75 grade point average on a 4.0 scale for the bachelor's level degree or earned an advanced degree such as a master's or professional degree.
- Undergraduate transcript must be provided to confirm eligibility for membership in a graduate chapter regardless of whether any advanced degrees have been earned.



Please Scan  to learn more about membership



POLICY AGAINST HAZING

Zeta Phi Beta Sorority, Incorporated (the “Sorority”) has designed a process for the selection, intake, and education of women who aspire to membership in the Sorority. The goal of the process is to inform the new members of the history, policies and procedures important to membership in the Sorority. Potential members of the Sorority have the right to participate in the process in environments that are not intentionally harmful.

Individuals who engage in hazing activities risk sanctions by the Sorority and criminal sanctions.

Hazing in any form or fashion is contrary to the philosophy and objectives of Zeta Phi Beta Sorority, Incorporated, and as such, the Sorority emphatically prohibits and denounces hazing.

Zeta Phi Beta Sorority defines hazing as any action or activity which:

- Brings about physical, mental, emotional or psychological harm to the potential member or is humiliating in its intent;
- Is vulgar, abusive, physically exhausting or dangerous;
- Materially disrupts an individual’s academic, professional, and personal endeavors;
- Abridges a person’s moral, religious or dietary beliefs;
- Compels an individual to break the rules and regulations of her college or university, Zeta Phi Beta Sorority, Incorporated or other entities; or
- Is defined as hazing under applicable laws.



HAZING REPORTING INFO:

International Headquarters:
202.387.3107

After Hours/Weekend: 800.368.5772

Email: reporthazing@zphib1920.org

Please Scan  to read the Sorority's Diversity Statement



PRINCIPLES



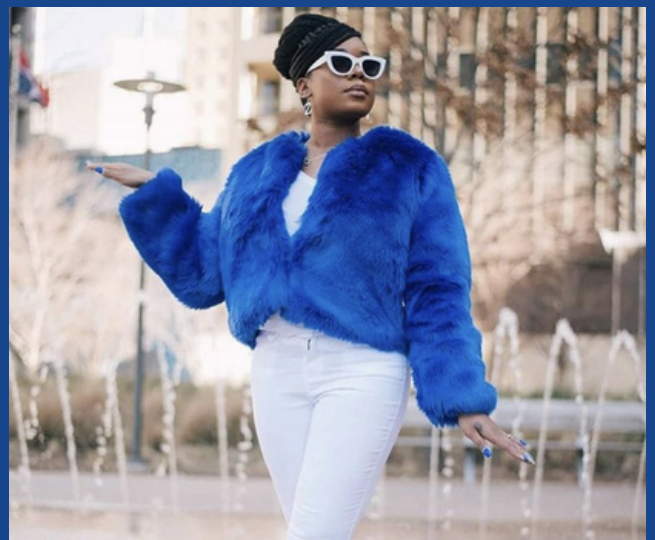
Scholarship
WHAT WE PRESENT



Service
WHAT WE DO



Sisterhood
WHO WE ARE



Finer Womanhood
WHAT WE EXHIBIT

Select PROGRAMMING & PARTNERSHIPS

BGLC

HEALTH LITERACY MONTH

All of Us
RESEARCH PROGRAM

Health research is important because we all want to live long and healthy lives. People who do health research are identifying better ways to keep us healthy, and they are discovering new ways to treat diseases.

Join the program today!

JoinAllOfUs.org/together

All of Us, the All of Us logo, and "The Future of Health Begins with You" are service marks of the U.S. Department of Health and Human Services.

ZETA PHI BETA
SORORITY, INCORPORATED

Pride MONTH

LOVE IS LOVE

WWW.ZPHB1920.ORG @OFFICIALZETA1920

APRIL IS
SEXUAL ASSAULT
AWARENESS MONTH

—INTERVENE AS A BYSTANDER
—SUPPORT AS A FRIEND

Wear Teal or
White
April 14

#zphibeta1920sexualassault
#SEXUALASSAULTAWARENESS

Dr. Stephanie M. Grant, International President; CEO
Dr. Sherrill G. Smith, International DV Co-Chair
Dorcas Smith, MSW, International DV Co-Chair

ZETA PHI BETA SORORITY, INCORPORATED

Juneteenth...
A NATIONAL
HOLIDAY!!

ZETAS *Y Talk* WITH OPAL LEE

CELEBRATING
JUNETEENTH

WWW.ZPHB1920.ORG @ZPHIBHQ @OFFICIALZETA1920

ZETA PHI BETA SORORITY, INCORPORATED

INTERNATIONAL FRIENDSHIP DAY

July 30, 2023

WWW.ZPHB1920.ORG @OFFICIALZETA1920

BGLC

BREAST CANCER AWARENESS MONTH

All Us
RESEARCH PROGRAM

At the moment, health care is often one-size-fits-all. But imagine a future where your health care is tailored to you, especially as a cancer patient. The All of Us Research Program could make that future possible.

Join the program today!

JoinAllOfUs.org/together

All of Us, the All of Us logo, and "The Future of Health Begins with You" are service marks of the U.S. Department of Health and Human Services.

ZETA PHI BETA
SORORITY, INCORPORATED

WORLD autism Acceptance Day

WWW.ZPHB1920.ORG @OFFICIALZETA1920

ZETA PHI BETA SORORITY, INCORPORATED

July 1st

Minority Mental Health

AWARENESS MONTH
TOGETHER FOR MENTAL HEALTH

WWW.ZPHB1920.ORG @ZPHIBHQ @OFFICIALZETA1920

GET **ENGAGED**
BE THE CHANGE!

ZETA PHI BETA SORORITY, INCORPORATED

ZETA NATIONAL VOTER REGISTRATION DAY

TUESDAY,
SEPTEMBER 20, 2022

WWW.ZPHB1920.ORG GOOD HEALTH WINS

ZETA PHI BETA SORORITY, INCORPORATED

WORLD MENTAL HEALTH DAY

WWW.ZPHB1920.ORG @ZPHIBHQ @OFFICIALZETA1920

ADDITIONAL MEMBERSHIP OPPORTUNITIES



ZETA AMICAE

As early as 1940, graduate chapters of Zeta Phi Beta began to realize the importance of the prestige, goodwill, and cooperation of women who, for various reasons, were not members of any Greek-letter organization and had not received a degree from an accredited four-year college or university. Under the administration of Past President Lullelia Harrison, the first Amicae chapter was organized in Omaha, Nebraska in 1947 making Zeta the first sorority in the National Pan-Hellenic Council to organize an auxiliary group. Zeta Amicae is affiliated through local chapters and is lovingly referred to as Friends of Zeta. To date, there are well over 2000 members in the Amicae Auxiliary.



PEARLETTES

Pearlettes (girls aged 4-8) are mentored by ladies of Zeta Phi Beta Sorority to become outstanding leaders in their community.



AMICETTES

Amicettes (girls aged 9-13) are willing to strive toward the high ideals of Zeta Phi Beta Sorority and who demonstrate the potential for leadership in service to the community.



ARCHONETTES

Archonettes (young ladies aged 14-18) demonstrate an interest in the goals and the ideals of scholarship, sisterly love, and community service.

ZETA MALE NETWORK

Zeta Male Network provides much-needed support to the programs and service projects of the Sorority. They assist the members of Zeta Phi Beta Sorority with mentoring programs and other positive influences that help young people build a strong future.



An Auxiliary of Zeta Phi Beta Sorority, Inc.



www.zphib1920.org