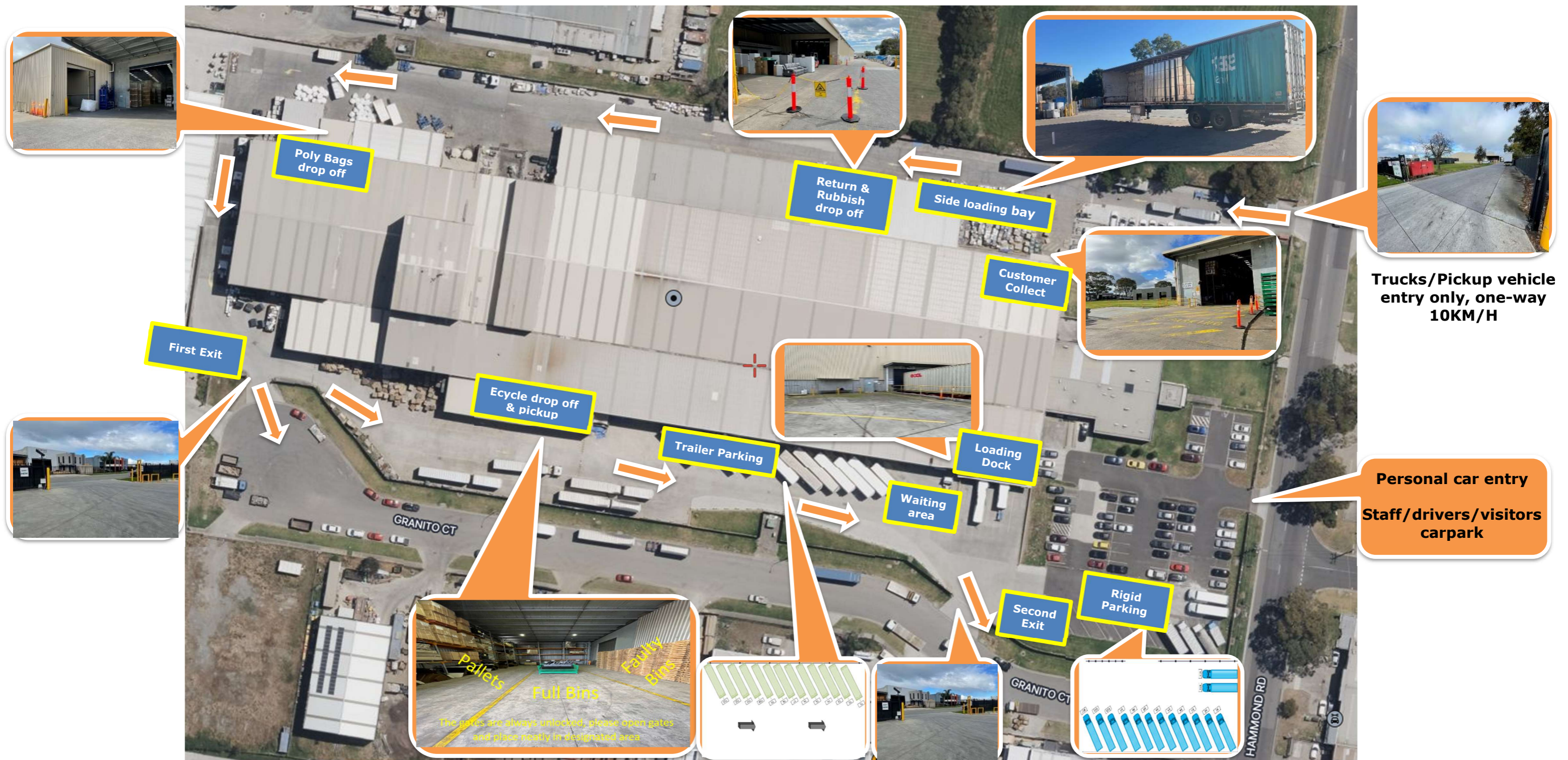


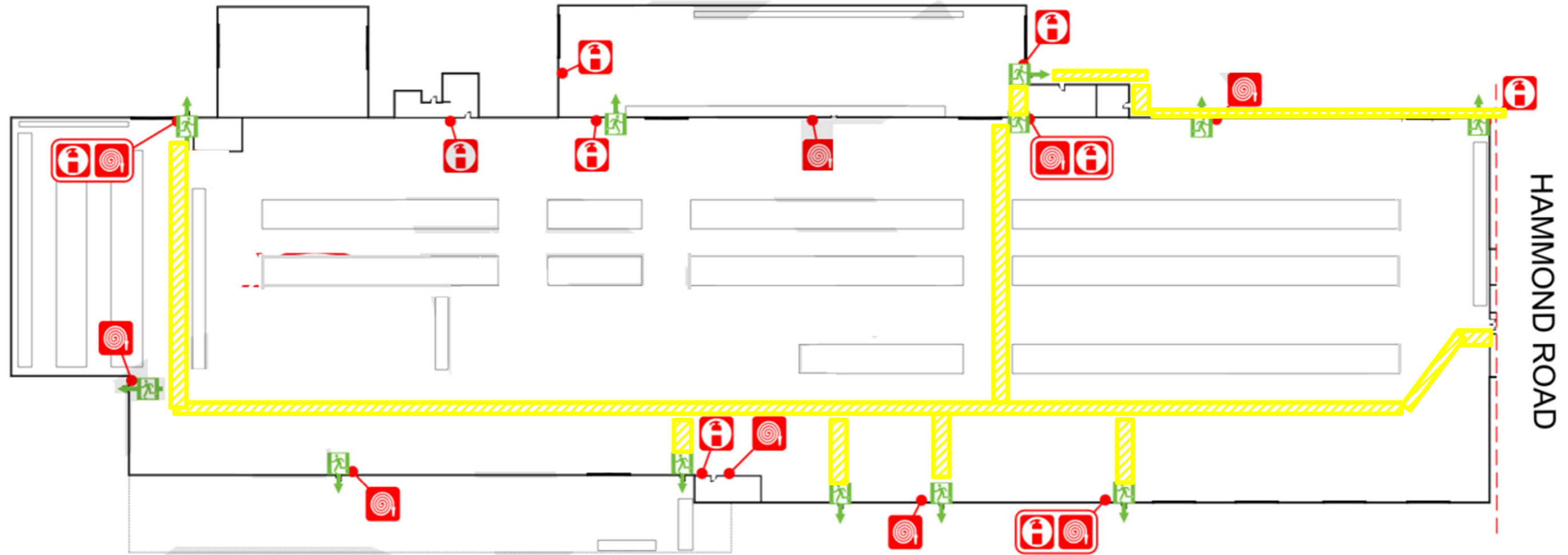
Hammond Road Traffic Management



- Site speed limit is 10 kph.
- Must follow to site PPE require (Hi Visibility clothing)
- All Delivery drivers are to park in destined waiting area and report to QLS office.
- Delivery drivers to follow instruction of QLS staff and adhere to vehicle mobilization procedures as provided by QLS.
- No personal car to be allowed park in the yard.

Hammond Road Traffic Management

Inside warehouse



GRANITO COURT

- Site speed limit is 12 kph.
- Must follow to site PPE require. (Hi Visibility clothing)
- All plant give way to pedestrian.
- Forklift operators to slow down proceed with sound horn on approach to blind sport.
- Pedestrian/Plant operator adhere to all relevant traffic management procedures.

***Pedestrian must follow the destinated pathway mark as yellow**