



Yuantai International SCM Pvt. Ltd.



Presentation of YUANTAI



Contents

- 1 **About Yuantai**
- 2 **Logistics Service**
- 3 **Sustainable Supply Chain Solutions**
- 4 **Vertical Customer References**
- 5 **Best Practices**
- 6 **Yuantai's Value Creation**



➤ About Yuantai

- **Guangzhou Yuantai Logistics Co., Ltd.** (for short name is **Yuantai Logistics**)
Yuantai Logistics was established in the year 1993.
- it is an comprehensive logistics company, which is registered by the China State Administration for Industry and Commerce, China State Administration of Taxation and approved of the establishment by the Transportation Management Committee.
- Yuantai international supply chain management private limited(for short name is **Indian Yuantai**) **Indian Yuantai** was established in the year November,2016.





➤ Yuantai— An International Logistics Network

Did you know?

International
Network
300 locations in
more than
10 countries

Warehousing
Space
2 Billion m²

+2000
employees

Integrated
Service
Portfolio



OVERLAND
Top1

- Focus on network services, LTL & FTL business
- Pan-Asian coverage of 10 countries
- Innovative intermodal solutions



AIR
Top 2

- Well positioned in the top league
- Leader in innovative cargo management concepts
- Strong partnerships with preferred airlines



WAREHOUSE
TOP3

- International network of warehouse & distribution facilities
- Dedicated and shared warehousing & distribution management



CUSTOMS
CLEARANCE
TOP4

- Sustained year-on-year double digit growth in managed freight
- Strong partnerships with extensive range of preferred ocean carriers



SUPPLY
CHAIN
TOP5

- Managed Integrated and Managed Neutral Solutions



- Strong Footprint in China
- From 15 to over 30 Cities by 2021



Central & North China

North

Beijing	34
Jinan	60
Shijiazhuang	28
Tianjin	15
Shanghai	20
Xi'an	10

Central

Chengdu	35
Chongqing	50
Nanjing	35
Shanghai	10
Hangzhou	10

Hong Kong & South China

Dongguan	223
Guangzhou	168
Hong Kong	5
Shenzhen	359



Network Expansion

Opening of 15 new branches by 2021

New Delhi
Greater Noida,
Mumbai
Dehradun
Bangalore
Chennai
Hyderabad
Lucknow
Jaipur
Gurgaon
Coimbatore
Patna
Rachin
Cochin
Chandigarh

Will be more.....

- New Footprint in India
- From 5 to over 15 Cities by 2021





In China,

Warehouse space in total: **2,000,000** sqm.

Domestic warehouse: 13

CFS Warehouse: 29





In India,

Warehouse space in total: **50,000 sqm.**

Domestic warehouse: 5

CFS Warehouse: 10





Contents

- 1 About Yuantai
- 2 **Logistics Service**
- 3 Sustainable Supply Chain Solutions
- 4 Vertical Customer References
- 5 Best Practices
- 6 Yuantai's Value Creation

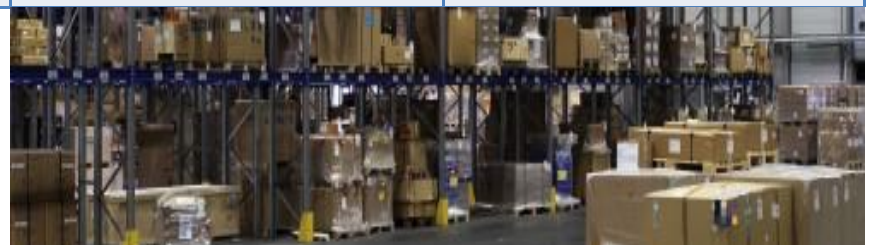


- Collection Services
- Track & Trace
- Order Fulfillment
- Air / Sea Forwarding
- Equipment Selection
- Customs Brokerage
- Supply Logistics

- Shared Warehousing
- Dedicated Warehousing
- Quality Checking
- Pick & Pack / Split Case Picking
- Value Added Services
- WMS

- FTL/LTL
- Courier / Parcel
- Carrier Selection
- Carrier Management
- Network Analysis
- Track & Trace
- TMS

- Returns Management
- Inspection Services
- Re-Working
- Re-Packing
- Re-Labeling
- Testing
- Repair Management





➤ Warehousing and Cross-docking

- **Tailor made solutions at strategic locations**
 - Supply logistics, distribution logistics and reverse logistics
 - Global, regional, national and local warehousing
 - Bonded and non-bonded warehousing
 - Public and dedicated warehousing
- **Optimised processes with advanced technology**
 - Break-bulk & pick-to-zero
 - Pick & pack
 - Postponement
 - Merge-in-transit
- **Value-added services**
 - Quality checking, Kitting, labeling, packing, slip sheeting, pick and pack ...





➤ Transportation Management - Distribution

- **Ability to offer large range of services**
 - FTL / LTL
 - Dedicated / shared fleet
 - Parcels & express courier
- **Asset and Non-asset based solutions**
 - Building own transportation network in China and India
 - Carrier management
 - Freight audit & payment
- **Information system capabilities**
 - Track & trace (TMS)
 - Customised reporting





➤ Transportation Management - Overland

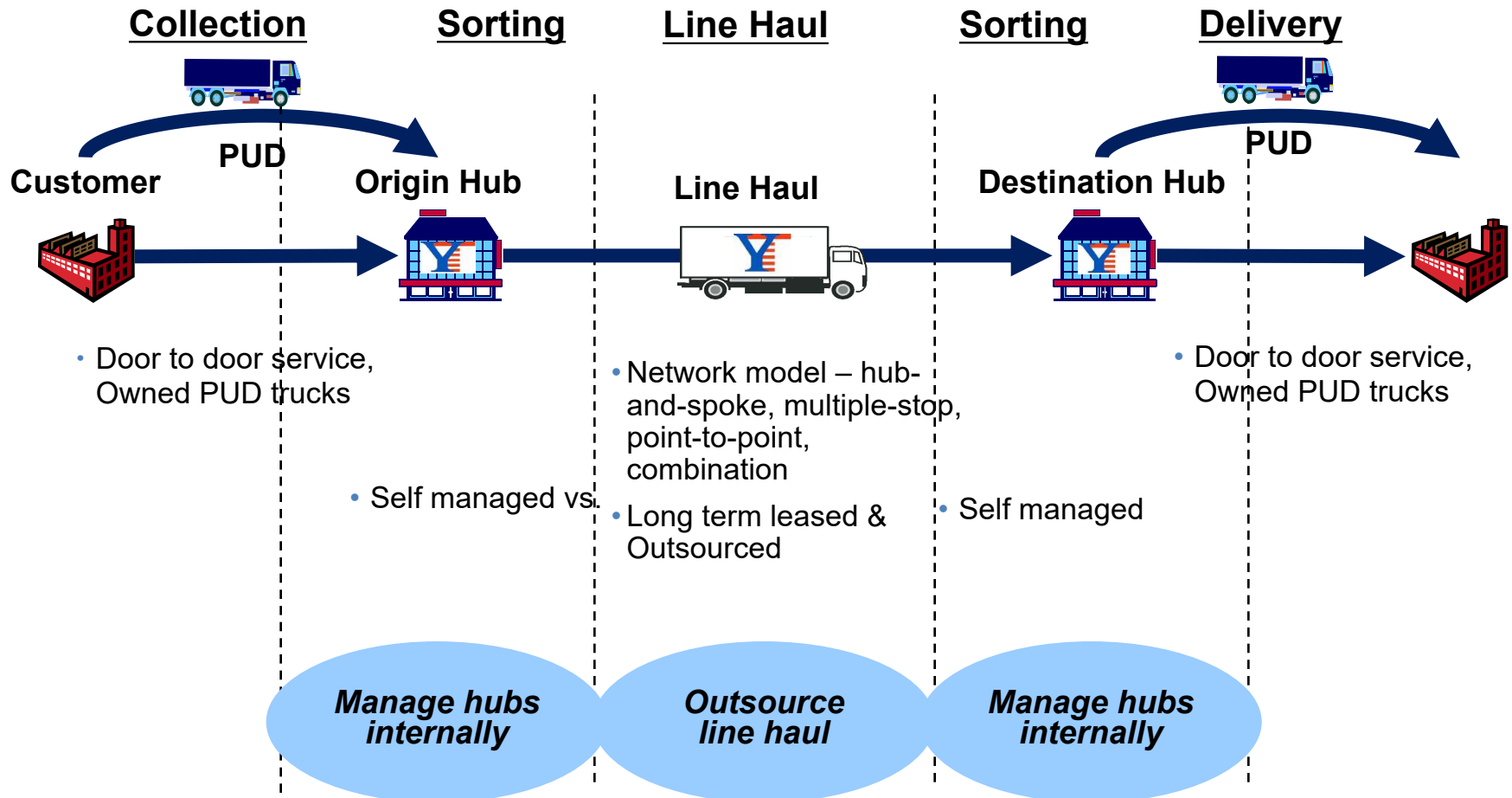
• Key features

- Owned Hub and Spoke network
- Direct pick-up and delivery
- Guaranteed departures
- Dedicated fleet & capacity
- Reliable lead-times
- GPS installed for tracking and tracing
- Compliant with safety standards
- POD Management
- Closed body truck





➤ Hub and Spoke Network





➤ Customs Clearance and Overseas Warehouse Service

1, Provide door to door service to customer from China to Pan India.

import and export port as below,

Delhi, Mumbai, Chennai ,Bangalore, Kolkata.

2, Fast customs Clearance service , there are own staffs set up in local customs.

3,More than 20,000 Sq. meter overseas warehouse storage and distribution in metro city.

4,Super network coverage in Pan India, cover 25,000 pin code service .

5,Professional and strong local team .





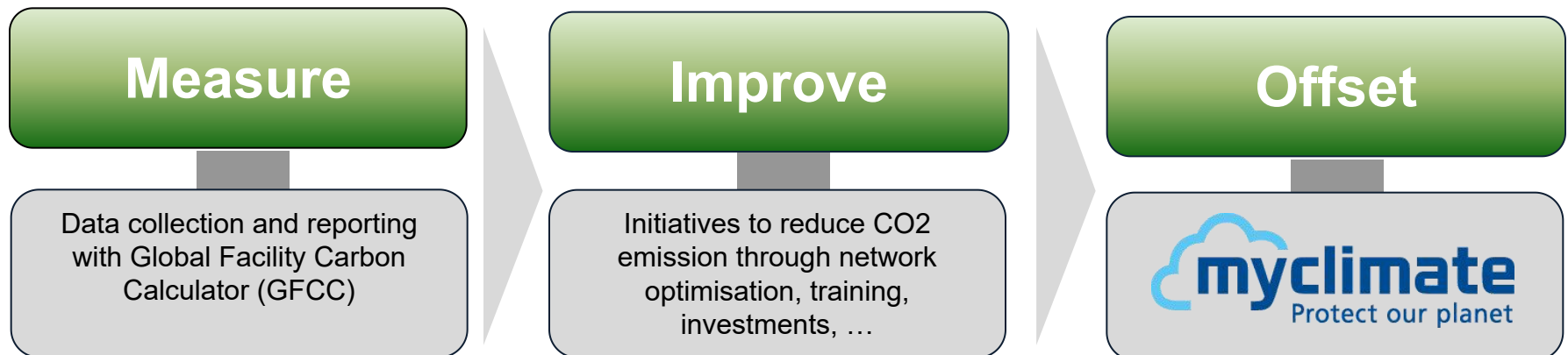
Contents

- 1 About Yuantai
- 2 Logistics Service
- 3 **Sustainable Supply Chain Solutions**
- 4 Vertical Customer References
- 5 Best Practices
- 6 Yuantai's Value Creation



➤ Sustainable Solutions in the Supply Chain

- Global Warehouse Carbon Calculator
- Measuring and Reducing the Energy consumption
- Green Warehouses





Contents

- 1 About Yuantai
- 2 Logistics Service
- 3 Sustainable Supply Chain Solutions
- 4 **Vertical Customer References**
- 5 Best Practices
- 6 Yuantai's Value Creation



➤ Customer References

China

India

Hi-Tech



Others





Contents

- 1 About Yuantai
- 2 Logistics Service
- 3 Sustainable Supply Chain Solutions
- 4 Vertical Customer References
- 5 **Best Practices**
- 6 Yuantai's Value Creation



➤ Case Study – OPPO India

• Product Type

- Mobile phone
- Spare part
- Marketing

• Scope of service

- Customs Clearance
- Trucking
- Transportation
- Warehouse management
- Order processing
- Local & Asian distribution
- Value added services: Repacking, quality check, stuffing, lashing

• Capacity:

- 25,000 SQM warehouse
- Weight of In- & Out-bound Orders: 4,000 ton / month





➤ Case Study – VIVO India



• Product Type

- Mobile phone
- Spare part
- Marketing

• Scope of service

- Trucking
- Order processing
- Local & Asian distribution
- Value added services: Repacking, quality check, stuffing, lashing

• Capacity

- 6,000 SQM warehouse in Mumbai
- Weight of In- & Out-bound Orders: 1,000 ton / month





➤ Case Study – Mobitech Creations



• Product Type

- Mobile phone
- Accessories

• Scope of service

- Warehousing management of 2C Business
- Order processing
- Picking
- Packing
- Distribution
- RTO
- Value added services: Repacking, quality check, stuffing lashing
- Trade in service





➤ Case Study – Mobitech Creations

• System Supporting

- API intergration with Client and Distribution party
- Push order through system
- Fetch tracking information from Distribution party system directory

• Facilities Supporting

- Three-dimensional rack warehouses locate in metro city
Delhi,Mumbai,Bangalore,Chennai
- Professional localized team management

• Capacity

- 5,000 SQM warehouse in Delhi and Mumbai and Bangalor
- Weight of In- & Out-bound Orders: 600 ton / month/
per warehouse





Contents

- 1 About Yuantai
- 2 Logistics Service
- 3 Sustainable Supply Chain Solutions
- 4 Vertical Customer References
- 5 Best Practices
- 6 **Yuantai's Value Creation**



➤ Yuantai's unique Value Proposition

Innovative,
Integrated Solutions

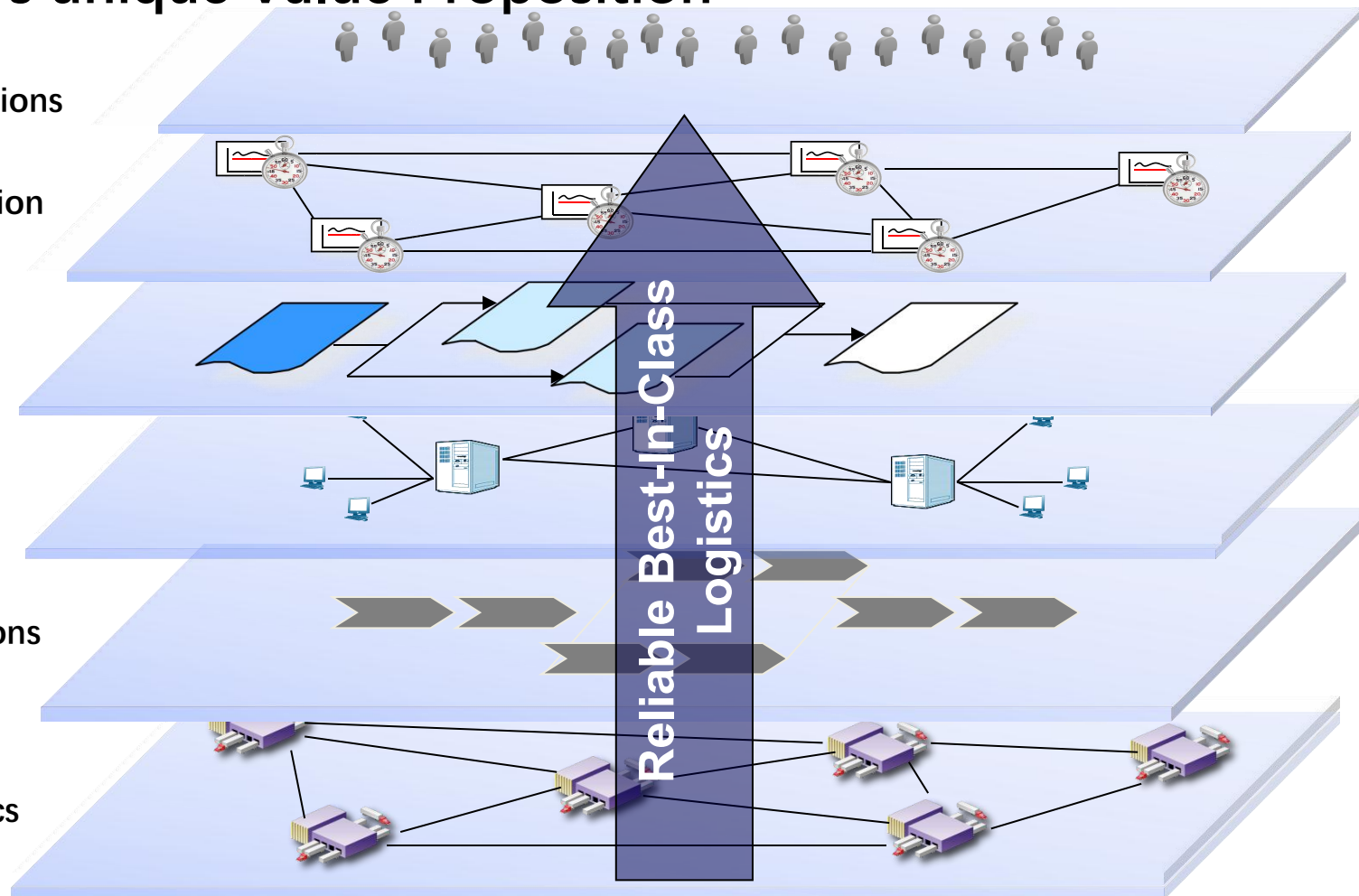
International
Yuantai Production
System

International
Implementation
Methodology

International
Information
System platform

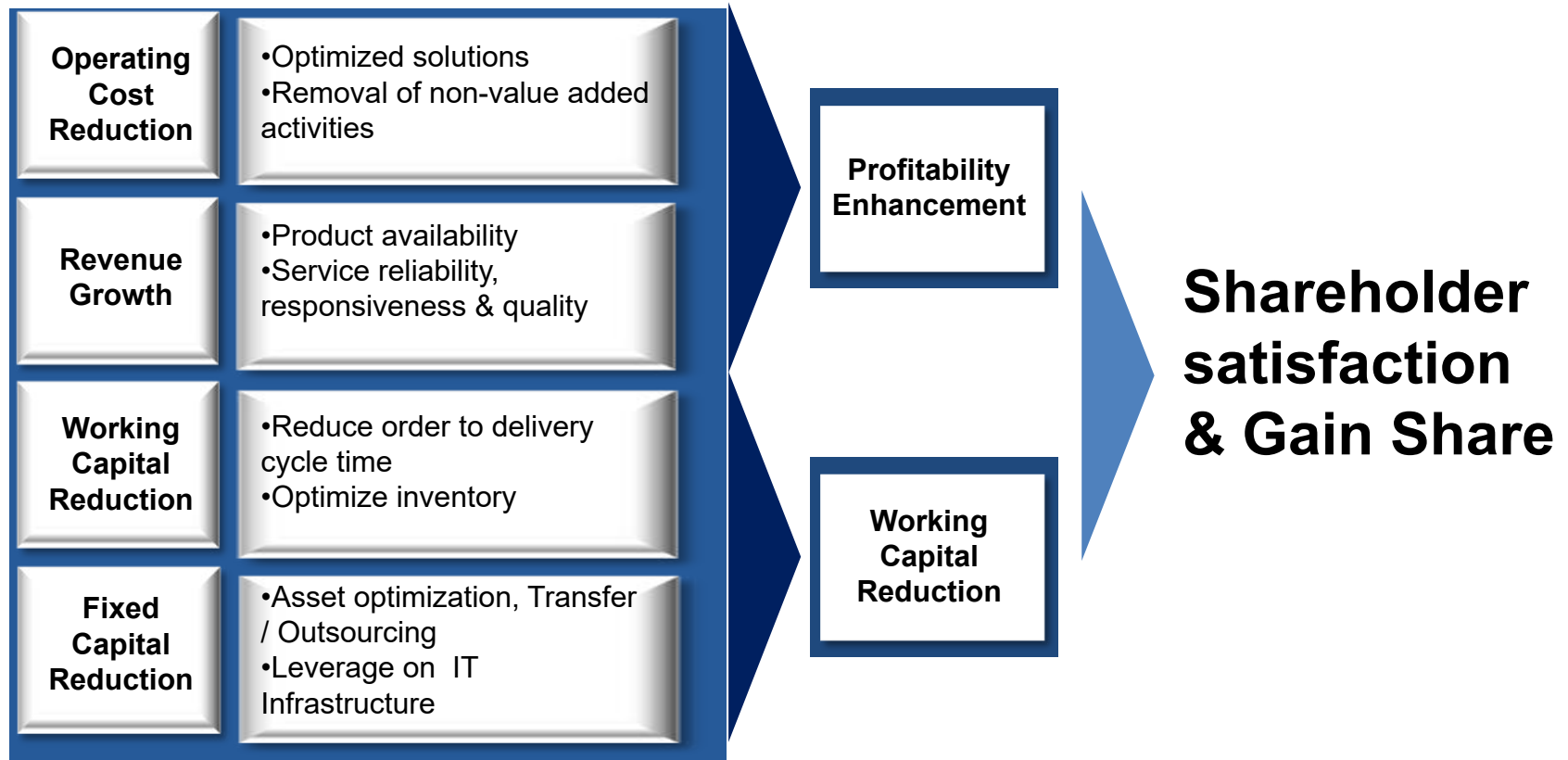
Standard Solutions
& Processes

International
Contract Logistics
Network





➤ Yuantai's Value Creation True win-win partnership



We Deliver What We Promise



Yuantai International SCM Pvt. Ltd



Yuantai The Extension of Your Business