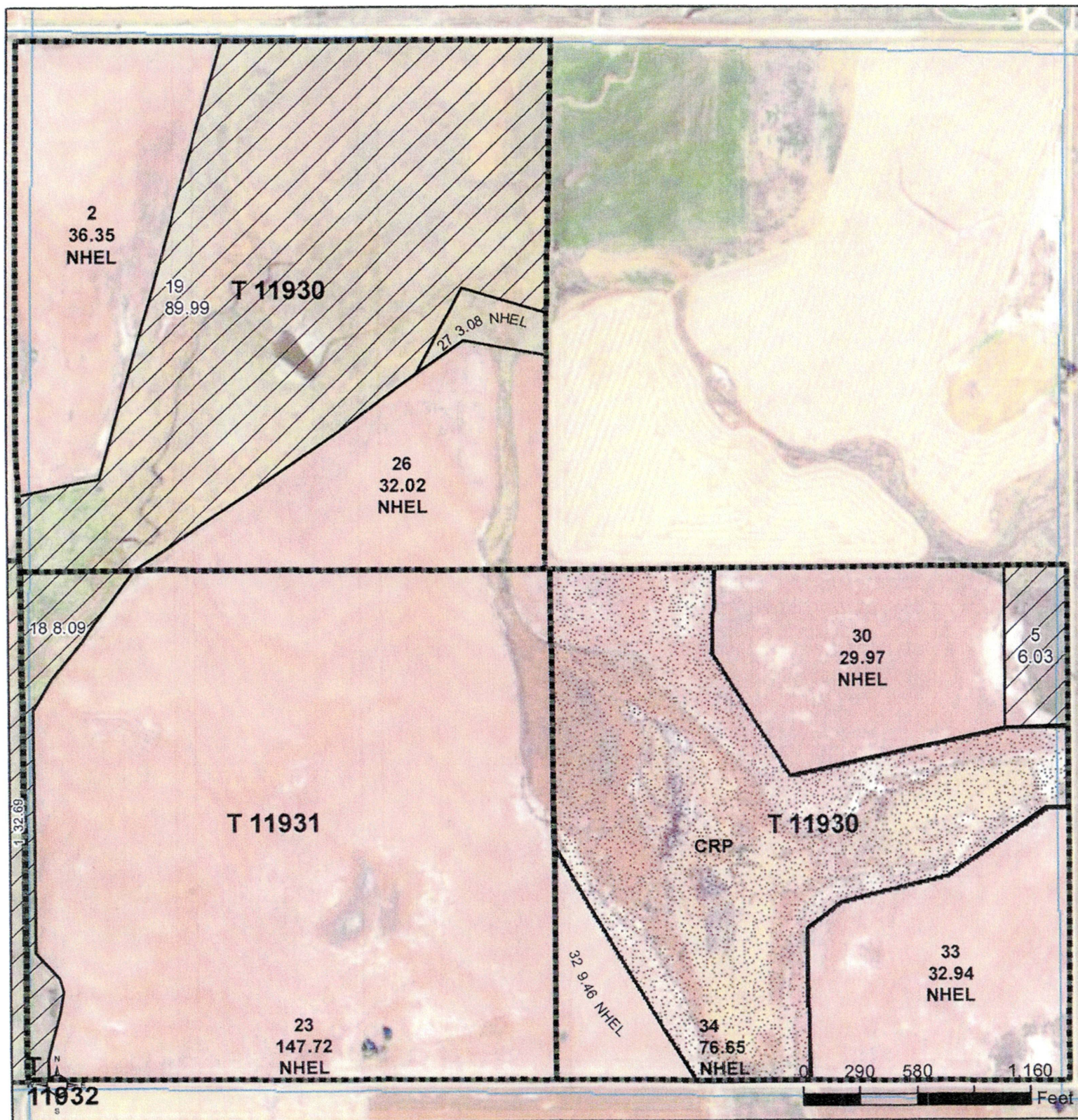




United States
Department of
Agriculture

Clark County, South Dakota



Common Land Unit

- Non-Cropland
- Cropland

- CRP
- Tract Boundary
- PLSS

Wetland Determination Identifiers

- Restricted Use
- Limited Restrictions
- Exempt from Conservation
- Compliance Provisions

Unless otherwise noted,
crops listed below are:

Non-irrigated
Intended for Grain
Corn = Yellow
Soybeans = Common
Wheat - HRS or HRW
Sunflowers = Oil or Non

Producer initial _____
Date _____

2025 Program Year

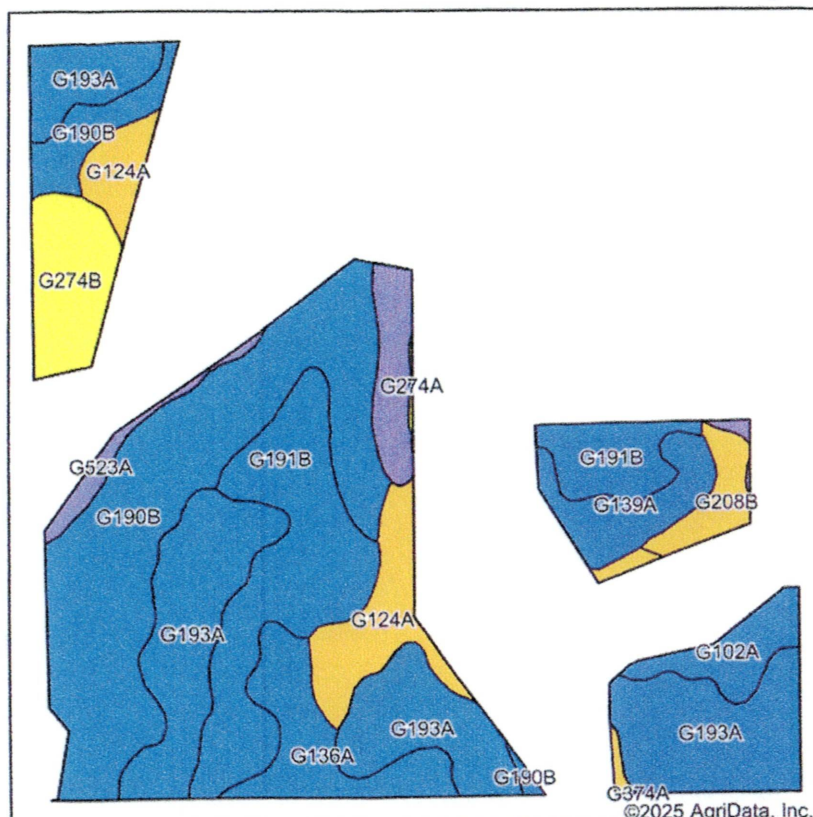
Map Created February 20, 2025

Farm 5899

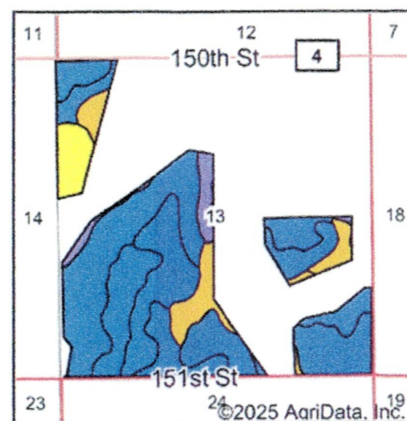
13-120N-60W-Spink

United States Department of Agriculture (USDA) Farm Service Agency (FSA) maps are for FSA Program administration only. This map does not represent a legal survey or reflect actual ownership; rather it depicts the information provided directly from the producer and/or National Agricultural Imagery Program (NAIP) imagery. The producer accepts the data 'as is' and assumes all risks associated with its use. USDA-FSA assumes no responsibility for actual or consequential damage incurred as a result of any user's reliance on this data outside FSA Programs. Wetland identifiers do not represent the size, shape, or specific determination of the area. Refer to your original determination (CPA-026 and attached maps) for exact boundaries and determinations or contact USDA Natural Resources Conservation Service (NRCS).

Soils Map



Soils data provided by USDA and NRCS.



State: **South Dakota**
 County: **Spink**
 Location: **13-120N-60W**
 Township: **Conde**
 Acres: **288.46**
 Date: **12/17/2025**

Maps Provided By



Area Symbol: SD115, Soil Area Version: 26							
Code	Soil Description	Acres	Percent of field	Non-Irr Class Legend	Non-Irr Class *c	Productivity Index	*n NCCPI Soybeans
G190B	Forman-Buse-Aastad loams, 1 to 6 percent slopes	74.82	25.9%		Ile	82	56
G193A	Aastad-Forman loams, 0 to 3 percent slopes	74.11	25.7%		Ilc	90	59
G191B	Forman-Aastad loams, 0 to 6 percent slopes	46.96	16.3%		Ile	86	56
G124A	Cresbard-Cavour loams, 0 to 3 percent slopes	21.97	7.6%		IIIs	57	44
G136A	Forman-Cresbard-Tonka complex, 0 to 3 percent slopes	16.67	5.8%		Ilc	72	47
G274B	Renshaw-Fordville loams, 2 to 6 percent slopes	14.31	5.0%		IVe	47	29
G139A	Forman-Cresbard loams, 0 to 3 percent slopes	11.50	4.0%		Ilc	77	52
G543A	Playmoor silty clay loam, 0 to 2 percent slopes, frequently flooded	9.58	3.3%		VIw	24	11
G102A	Hamerly loam, 0 to 3 percent slopes	8.62	3.0%		Ile	76	55
G208B	Peever-Buse clay loams, 1 to 6 percent slopes	6.43	2.2%		IIle	63	47
G523A	Lowe-Fluvaquents, channeled complex, 0 to 2 percent slopes, frequently flooded	3.16	1.1%		VIw	21	9
G274A	Renshaw-Fordville loams, 0 to 2 percent slopes	0.33	0.1%		IVs	50	29
Weighted Average					2.38	77.1	*n 51.6

*n: The aggregation method is "Weighted Average using all components"

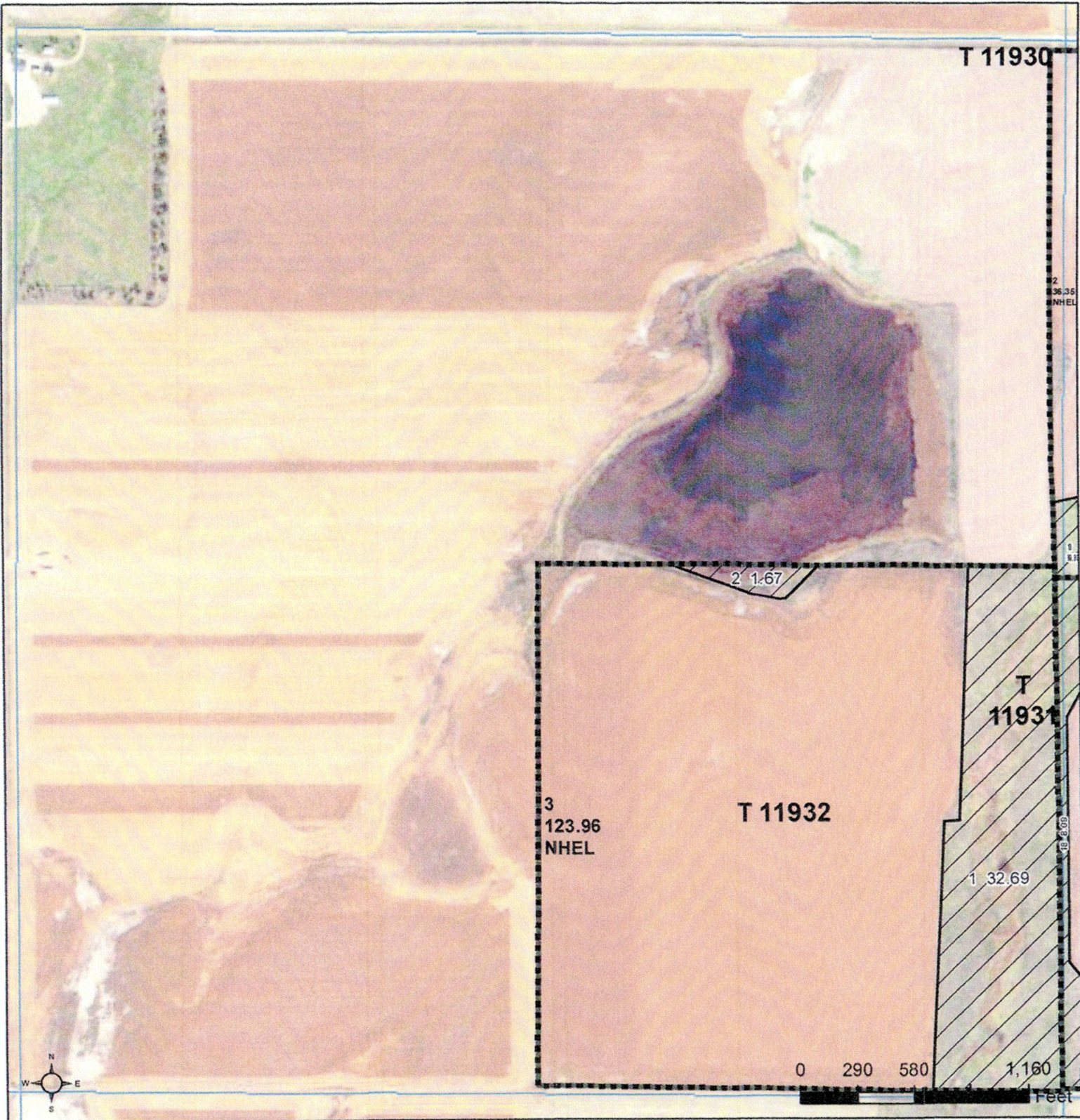
*c: Using Capabilities Class Dominant Condition Aggregation Method

Soils data provided by USDA and NRCS.



United States
Department of
Agriculture

Clark County, South Dakota



Common Land Unit

- Non-Cropland
- Cropland

- Tract Boundary
- PLSS

Wetland Determination Identifiers

- Restricted Use
- Limited Restrictions
- Exempt from Conservation
- Compliance Provisions

Unless otherwise noted,
crops listed below are:
Non-irrigated
Intended for Grain
Corn = Yellow
Soybeans = Common
Wheat - HRS or HRW
Sunflowers = Oil or Non

Producer initial _____
Date _____

2025 Program Year

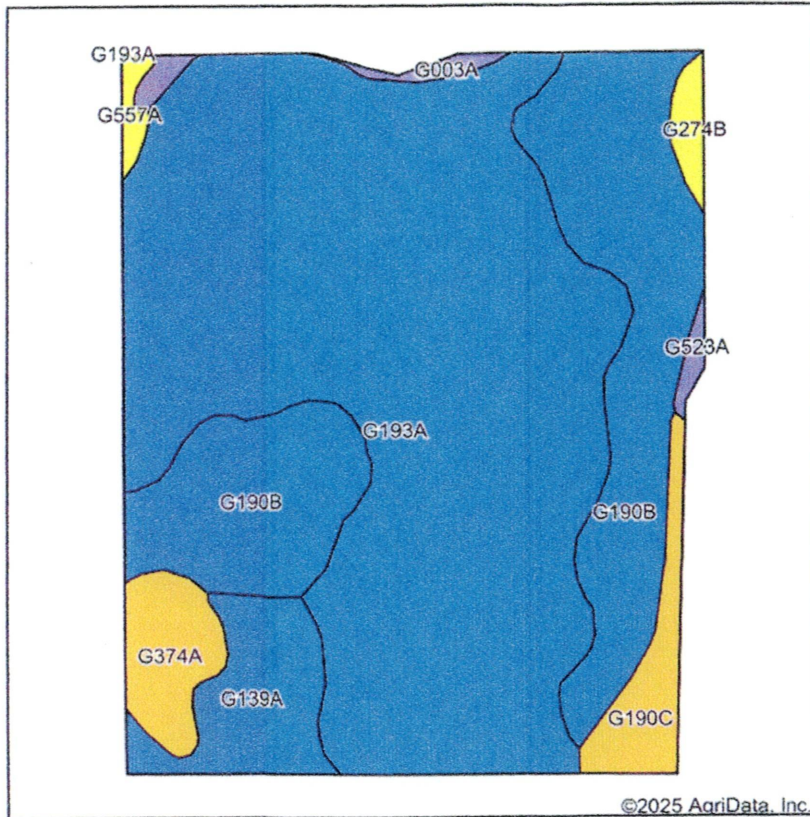
Map Created February 20, 2025

Farm 5899

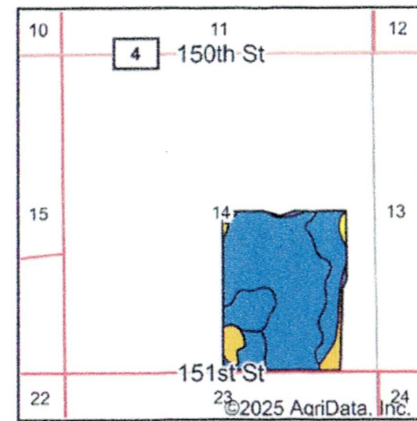
14-120N-60W-Spink

United States Department of Agriculture (USDA) Farm Service Agency (FSA) maps are for FSA Program administration only. This map does not represent a legal survey or reflect actual ownership; rather it depicts the information provided directly from the producer and/or National Agricultural Imagery Program (NAIP) imagery. The producer accepts the data 'as is' and assumes all risks associated with its use. USDA-FSA assumes no responsibility for actual or consequential damage incurred as a result of any user's reliance on this data outside FSA Programs. Wetland identifiers do not represent the size, shape, or specific determination of the area. Refer to your original determination (CPA-026 and attached maps) for exact boundaries and determinations or contact USDA Natural Resources Conservation Service (NRCS).

Soils Map



Soils data provided by USDA and NRCS.



State: **South Dakota**
 County: **Spink**
 Location: **14-120N-60W**
 Township: **Conde**
 Acres: **123.96**
 Date: **12/17/2025**

Maps Provided By



Area Symbol: SD115, Soil Area Version: 26							
Code	Soil Description	Acres	Percent of field	Non-Irr Class Legend	Non-Irr Class *c	Productivity Index	*n NCCPI Soybeans
G193A	Aastad-Forman loams, 0 to 3 percent slopes	75.62	60.9%		IIc	90	59
G190B	Forman-Buse-Aastad loams, 1 to 6 percent slopes	29.82	24.1%		IIe	82	56
G139A	Forman-Cresbard loams, 0 to 3 percent slopes	6.92	5.6%		IIc	77	52
G374A	Egeland-Embsden complex, 0 to 2 percent slopes	4.17	3.4%		IIIe	61	42
G190C	Forman-Buse-Aastad loams, 3 to 9 percent slopes	3.96	3.2%		IIIe	77	54
G274B	Renshaw-Fordville loams, 2 to 6 percent slopes	1.13	0.9%		IVe	47	29
G003A	Parnell silty clay loam, 0 to 1 percent slopes	1.11	0.9%		Vw	25	13
G557A	Ranslo silty clay loam, 0 to 1 percent slopes, occasionally flooded	0.72	0.6%		IVs	31	44
G523A	Lowe-Fluvaquents, channeled complex, 0 to 2 percent slopes, frequently flooded	0.51	0.4%		VIw	21	9
Weighted Average					2.14	84.4	*n 56.2

*n: The aggregation method is "Weighted Average using all components"

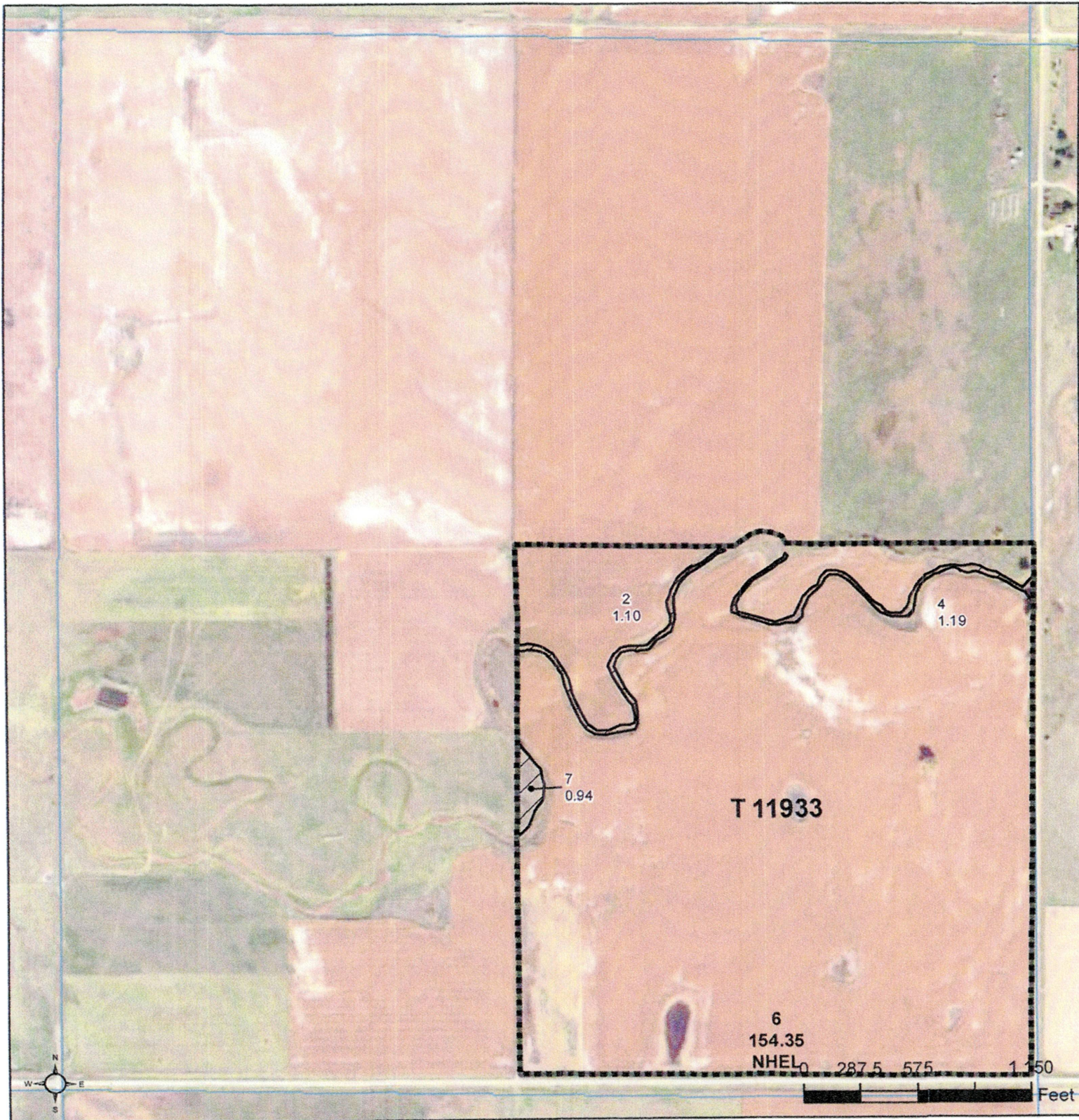
*c: Using Capabilities Class Dominant Condition Aggregation Method

Soils data provided by USDA and NRCS.



United States
Department of
Agriculture

Clark County, South Dakota



Common Land Unit

	Tract Boundary
	Non-Cropland
	Cropland
	PLSS

Wetland Determination Identifiers

- Restricted Use
- Limited Restrictions
- Exempt from Conservation Compliance Provisions

Unless otherwise noted,
crops listed below are:
Non-irrigated
Intended for Grain
Corn = Yellow
Soybeans = Common
Wheat - HRS or HRW
Sunflowers = Oil or Non

Producer initial _____
Date _____

2025 Program Year

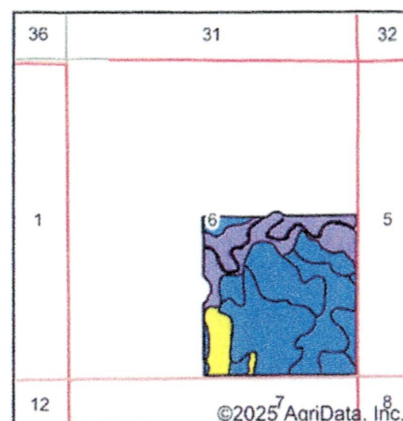
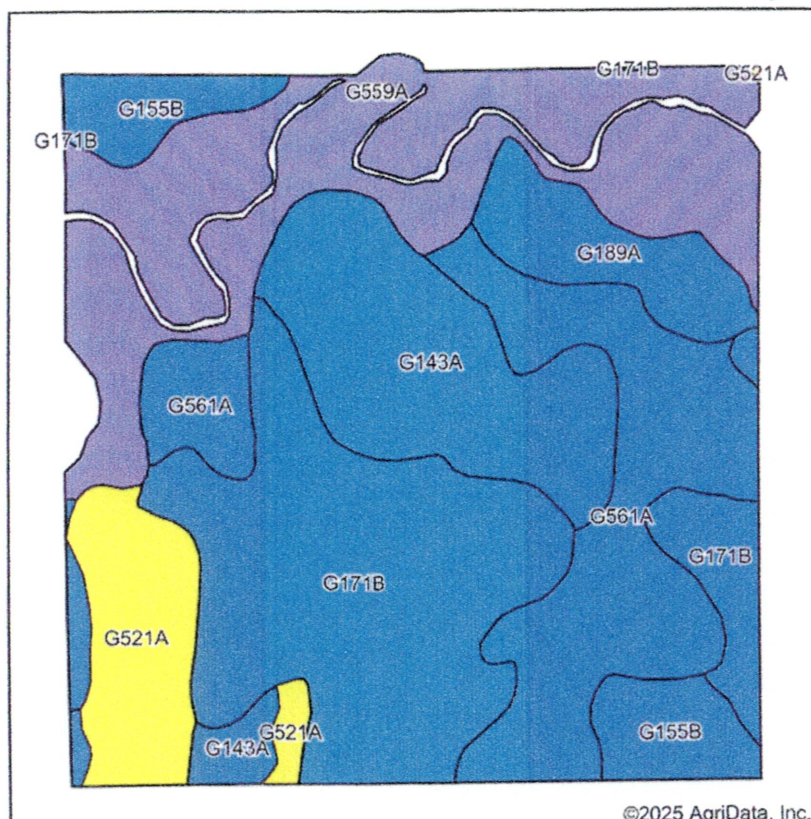
Map Created February 20, 2025

Farm 5899

6-118N-59W-Clark

United States Department of Agriculture (USDA) Farm Service Agency (FSA) maps are for FSA Program administration only. This map does not represent a legal survey or reflect actual ownership; rather it depicts the information provided directly from the producer and/or National Agricultural Imagery Program (NAIP) imagery. The producer accepts the data 'as is' and assumes all risks associated with its use. USDA-FSA assumes no responsibility for actual or consequential damage incurred as a result of any user's reliance on this data outside FSA Programs. Wetland identifiers do not represent the size, shape, or specific determination of the area. Refer to your original determination (CPA-026 and attached maps) for exact boundaries and determinations or contact USDA Natural Resources Conservation Service (NRCS).

Soils Map



State: **South Dakota**
 County: **Clark**
 Location: **6-118N-59W**
 Township: **Ash**
 Acres: **154.36**
 Date: **12/17/2025**

Maps Provided By
surety
 CUSTOMIZED ONLINE MAPPING
 © AgriData, Inc. 2025 www.AgriDataInc.com



Soils data provided by USDA and NRCS.

©2025 AgriData, Inc.

Area Symbol: SD025, Soil Area Version: 28							
Code	Soil Description	Acres	Percent of field	Non-Irr Class Legend	Non-Irr Class *c	Productivity Index	*n NCCPI Soybeans
G171B	Barnes-Buse-Svea loams, 0 to 6 percent slopes	40.64	26.4%		Ile	76	54
G559A	Fluvaquents, channeled-La Prairie-Fairdale complex, 0 to 2 percent slopes, frequently flooded	36.01	23.3%		VIw	32	24
G561A	La Prairie loam, 0 to 2 percent slopes, occasionally flooded	27.89	18.1%		IIc	83	57
G143A	Barnes-Svea loams, 0 to 3 percent slopes	22.20	14.4%		IIc	85	57
G521A	Lowe loam, 0 to 1 percent slopes, occasionally flooded	11.03	7.1%		IVw	41	29
G155B	Barnes-Svea loams, 0 to 6 percent slopes	8.71	5.6%		Ile	86	58
G189A	Aastad loam, 0 to 3 percent slopes, drainageway	7.88	5.1%		IIc	97	63
Weighted Average					3.08	67.4	*n 46.9

*n: The aggregation method is "Weighted Average using all components"

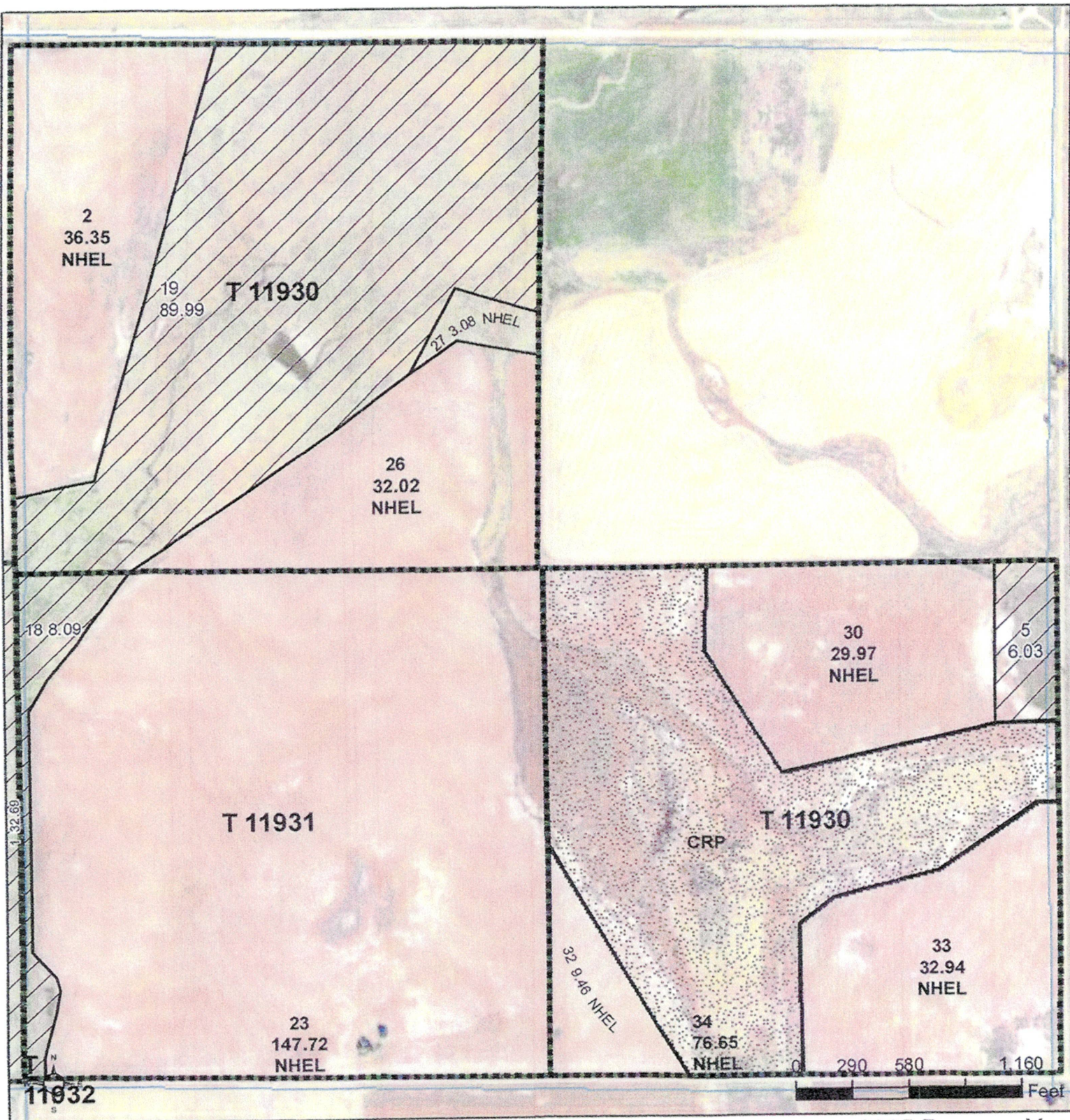
*c: Using Capabilities Class Dominant Condition Aggregation Method

Soils data provided by USDA and NRCS.



United States
Department of
Agriculture

Clark County, South Dakota



Common Land Unit

- Non-Cropland
- Cropland

Wetland Determination Identifiers

- Restricted Use
- Limited Restrictions
- Exempt from Conservation
- Compliance Provisions

- CRP
- Tract Boundary
- PLSS

Unless otherwise noted,
crops listed below are:
Non-irrigated
Intended for Grain
Corn = Yellow
Soybeans = Common
Wheat - HRS or HRW
Sunflowers = Oil or Non

Producer initial _____
Date _____

2025 Program Year

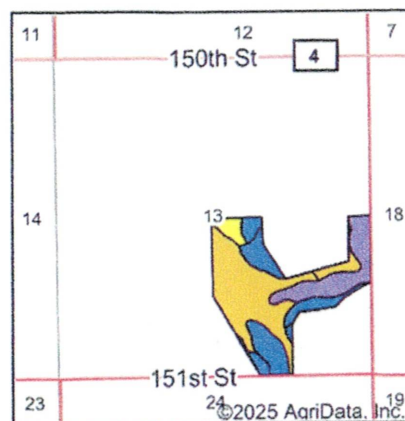
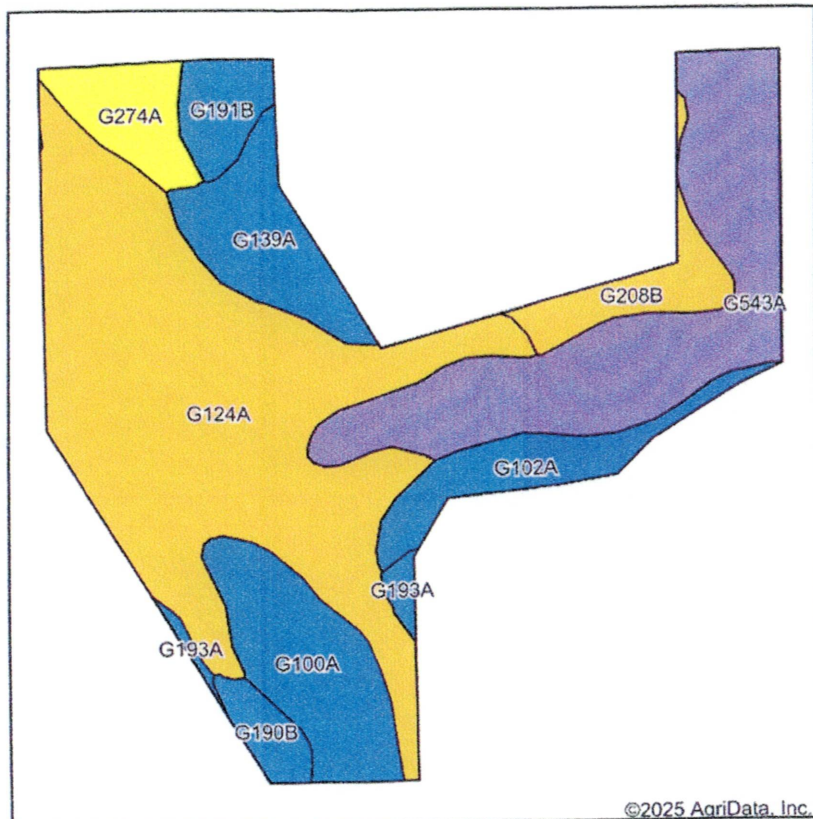
Map Created February 20, 2025

Farm 5899

13-120N-60W-Spink

United States Department of Agriculture (USDA) Farm Service Agency (FSA) maps are for FSA Program administration only. This map does not represent a legal survey or reflect actual ownership; rather it depicts the information provided directly from the producer and/or National Agricultural Imagery Program (NAIP) imagery. The producer accepts the data 'as is' and assumes all risks associated with its use. USDA-FSA assumes no responsibility for actual or consequential damage incurred as a result of any user's reliance on this data outside FSA Programs. Wetland identifiers do not represent the size, shape, or specific determination of the area. Refer to your original determination (CPA-026 and attached maps) for exact boundaries and determinations or contact USDA Natural Resources Conservation Service (NRCS).

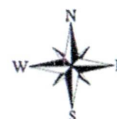
Soils Map













State: **South Dakota**
 County: **Spink**
 Location: **13-120N-60W**
 Township: **Conde**
 Acres: **82.99**
 Date: **12/17/2025**

Maps Provided By

 CUSTOMIZED ONLINE MAPPING
 © AgriData, Inc. 2025 www.AgriDataInc.com



Soils data provided by USDA and NRCS.

Area Symbol: SD115, Soil Area Version: 26							
Code	Soil Description	Acres	Percent of field	Non-Irr Class Legend	Non-Irr Class *c	Productivity Index	*n NCCPI Soybeans
G124A	Cresbard-Cavour loams, 0 to 3 percent slopes	35.45	42.6%		III s	57	44
G543A	Playmoor silty clay loam, 0 to 2 percent slopes, frequently flooded	17.59	21.2%		VI w	24	11
G100A	Hamerly-Tonka complex, 0 to 3 percent slopes	7.62	9.2%		II e	61	44
G139A	Forman-Cresbard loams, 0 to 3 percent slopes	5.70	6.9%		II c	77	52
G102A	Hamerly loam, 0 to 3 percent slopes	4.63	5.6%		II e	76	55
G274A	Renshaw-Fordville loams, 0 to 2 percent slopes	3.55	4.3%		IV s	50	29
G208B	Peever-Buse clay loams, 1 to 6 percent slopes	3.39	4.1%		III e	63	47
G191B	Forman-Aastad loams, 0 to 6 percent slopes	2.54	3.1%		II e	86	56
G190B	Forman-Buse-Aastad loams, 1 to 6 percent slopes	1.67	2.0%		II e	82	56
G193A	Aastad-Forman loams, 0 to 3 percent slopes	0.85	1.0%		II c	90	59
Weighted Average					3.40	54.5	*n 38.4

*n: The aggregation method is "Weighted Average using all components"

*c: Using Capabilities Class Dominant Condition Aggregation Method

Approx CRP Acres
 plus 6 acres
 NE corner

Soils data provided by USDA and NRCS.