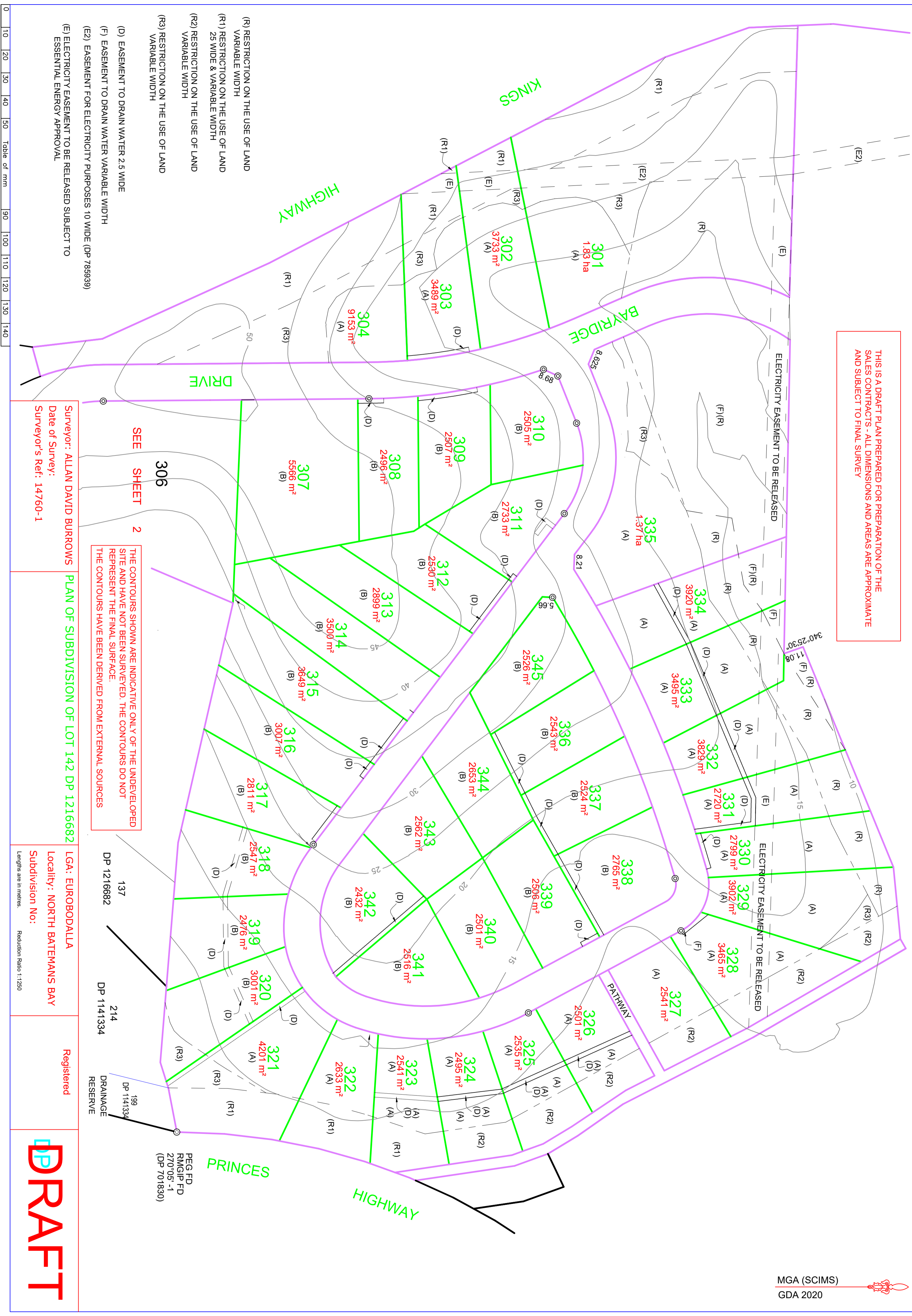


THIS IS A DRAFT PLAN PREPARED FOR PREPARATION OF THE SALES CONTRACTS - ALL DIMENSIONS AND AREAS ARE APPROXIMATE AND SUBJECT TO FINAL SURVEY



- (R) RESTRICTION ON THE USE OF LAND VARIABLE WIDTH
- (R1) RESTRICTION ON THE USE OF LAND 25 WIDE & VARIABLE WIDTH
- (R2) RESTRICTION ON THE USE OF LAND VARIABLE WIDTH
- (R3) RESTRICTION ON THE USE OF LAND VARIABLE WIDTH
- (D) EASEMENT TO DRAIN WATER 2.5 WIDE
- (F) EASEMENT TO DRAIN WATER VARIABLE WIDTH
- (E) EASEMENT FOR ELECTRICITY PURPOSES 10 WIDE (DP 78939)
- (E) ELECTRICITY EASEMENT TO BE RELEASED SUBJECT TO ESSENTIAL ENERGY APPROVAL

SEE SHEET 2

THE CONTOURS SHOWN ARE INDICATIVE ONLY OF THE UNDEVELOPED SITE AND HAVE NOT BEEN SURVEYED. THE CONTOURS DO NOT REPRESENT THE FINAL SURFACE. THE CONTOURS HAVE BEEN DERIVED FROM EXTERNAL SOURCES

Surveyor: ALLAN DAVID BURROWS
 Date of Survey:
 Surveyor's Ref: 14760-1

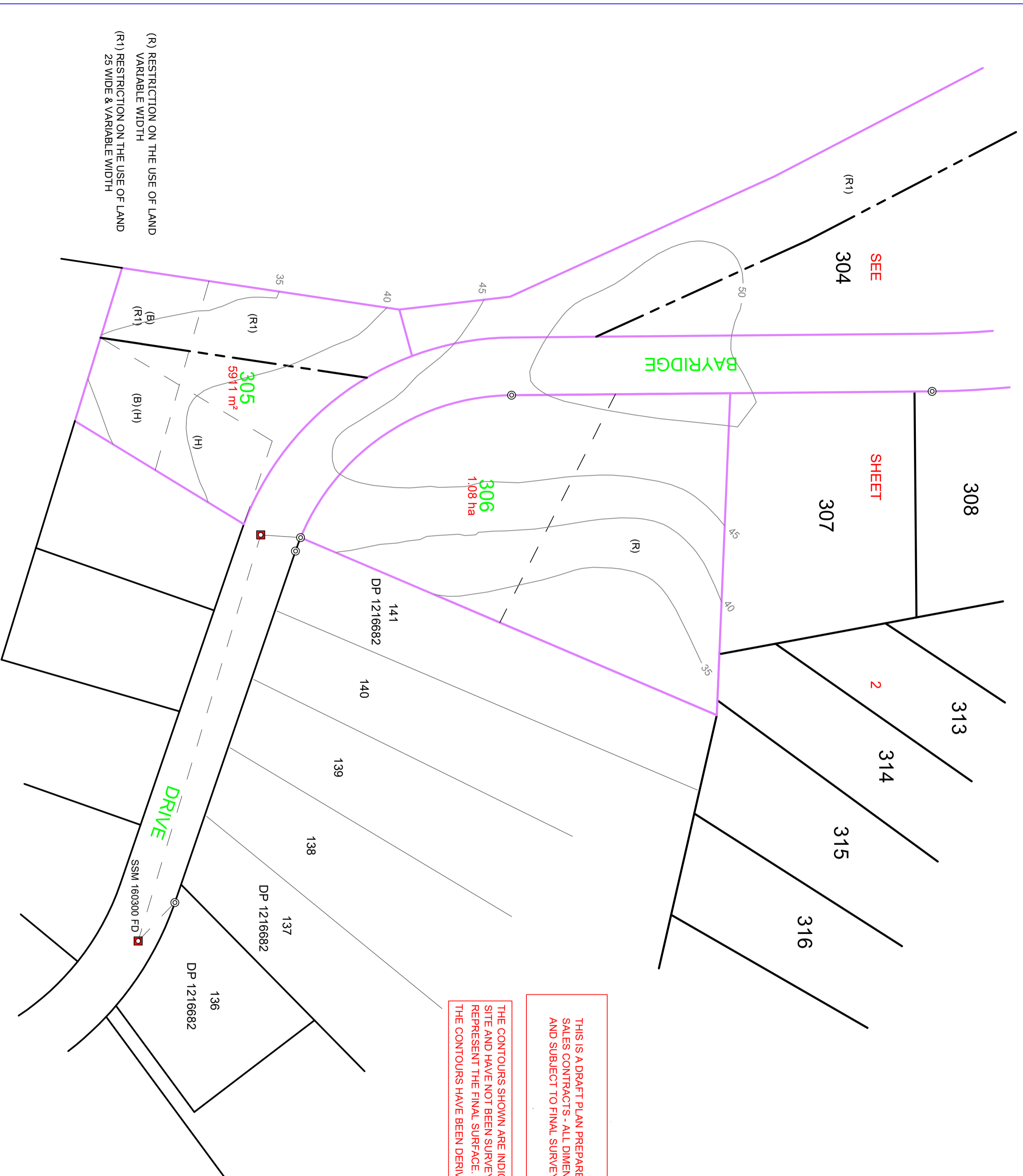
PLAN OF SUBDIVISION OF LOT 142 DP 1216682

LGA: EUROBODALLA
 Locality: NORTH BATEMANS BAY
 Subdivision No:

Registered

DRAFT





THIS IS A DRAFT PLAN PREPARED FOR PREPARATION OF THE SALES CONTRACTS - ALL DIMENSIONS AND AREAS ARE APPROXIMATE AND SUBJECT TO FINAL SURVEY

THE CONTOURS SHOWN ARE INDICATIVE ONLY OF THE UNDEVELOPED SITE AND HAVE NOT BEEN SURVEYED. THE CONTOURS DO NOT REPRESENT THE FINAL SURFACE. THE CONTOURS HAVE BEEN DERIVED FROM EXTERNAL SOURCES

(R) RESTRICTION ON THE USE OF LAND
VARIABLE WIDTH
(R1) RESTRICTION ON THE USE OF LAND
25 WIDE & VARIABLE WIDTH

(B) EASEMENT FOR ASSET PROTECTION ZONE
MAINTENANCE VARIABLE WIDTH (DP 1211931) (No 7)
(H) EASEMENT FOR ASSET PROTECTION ZONE
MAINTENANCE VARIABLE WIDTH (DP 1216682)

0 10 20 30 40 50 Table of mm 90 100 110 120 130 140

Surveyor: ALLAN DAVID BURROWS
Date of Survey:
Surveyor's Ref: 14760-1

PLAN OF SUBDIVISION OF LOT 142 DP 1216682

LGA: EUROBODALLA
Locality: NORTH BATEMANS BAY
Subdivision No:
Lengths are in metres. Reduction Ratio 1:1250

Registered

DRAFT

