

Community Circle

Keeping the Lodi
Community in the Loop

Jan./Feb./Mar. 2023

Reach Out Lodi, Inc. is committed to being diverse, equitable and inclusive.

Quote of the Month

"Do your little bit of good where you are; it's those little bits of good put together that overwhelm the world."

—Desmond Tutu



Community Center and Community Store

601 Clark Street
Lodi, WI 53555
Mailing address: P.O. Box 316
Lodi, WI 53555
reachoutlodi@gmail.com
reachoutlodi.org
608-592-4592

Find us on  

Community Store Hours:

Monday - Friday
8:30am-3:30pm
Saturday 8:30am-11am
By appointment

Community Center Hours:

Monday - Thursday
8:30am-3:30pm
Friday 8:30am-3:00pm
Saturday 8:30am-11am

Reach Out Lodi Inc. is a 501(c)
(3) nonprofit agency supported
by donations and grants. We
charge no fees to our
Community Store customers.

HIGHLIGHTS OF 2022

Bringing people together to provide vital programs and services that strengthen our community is at the heart of what we do at Reach Out Lodi (ROL). 2022 was a very challenging but productive year. Together with an outstanding group of volunteers and fiscal support from many people we were able to improve our infrastructure and offer new programs and services. Listed below are some of our major accomplishments in 2022.

Infrastructure Projects

- Construction of a 24'X36' Utility Building.
- Installation of a larger parking lot.
- Replacement of five sections of concrete sidewalk in the front of the building.
- Installation of an irrigation system for the Community Garden; a gift from Arlington Hardware Co.

New Programs and Services

- ROL began offering transportation services for medical appointments, food deliveries, and more for those who need help.
- ROL was honored to award four \$1000 scholarships to graduating LHS students to further their higher educational interests.
- Memory Café is a relatively new program that offers a safe and comfortable place where someone living with dementia and their care partner can socialize and enjoy a variety of fun activities together. Dementia Journey Support Group was also started to offer new information, networking, and support for those caring for those struggling with dementia.
- On Veteran's Day, November 11, we hosted a delicious breakfast and program of recognition for veterans and their spouses. (Photos on page 7.)
- During Medicare's open enrollment period, an Elder Benefit Specialist from the Columbia County ADRC provided one-on-one insurance counseling and assistance at ROL.
- Several of our Community Center programs that were negatively impacted by the pandemic are bouncing back nicely, such as Painting for Pleasure, Wellness On Wednesday and senior exercise programs.
- At the 2022 Thanksgiving Day Meal, we served 163 meals. Most were dine-in, but we also provided take-out meals and delivered to 11 homes.

On behalf of our Board of Directors, volunteers, and staff we want to express our gratitude to every one who helped sustain us with prayers, donations, time and gifts. Working in partnership we strengthen our community.

—Jim Schmiedlin, President, ROL Board of Directors

What's Happening at Reach Out Lodi January/February/March 2023 Calendar of Events

Dinner with... First Impressions

Tuesday, January 10th, 5:00 pm

Jessica Michna as Laura Ingalls Wilder

Generations of children worldwide have been fascinated by the stories and books of Laura Ingalls Wilder. But how did her life really evolve? In this First Impressions presentation you will meet Mrs. Wilder, older, wiser and reflecting back on her life. She will tell you her life story and how she came to produce her literary works.

Please make reservations by **January 9th**.

Call: 608-592-4592 to make reservations.

Cost: \$10

Dinner With... entertainment is funded with a grant from the Community Foundation of South Central Wisconsin.



Dinner with... Finding North

Tuesday, February 7th, 5:00 pm

Finding North is an American singer/songwriter duo from Sun Prairie, Wisconsin. Paul and Sussanah Herrick bring each audience along with them on a heartfelt journey of life's highs and lows through catchy melodies and beautiful vocal harmonies with piano and guitar for instrumentation. They are offering a Valentine's theme with songs from the 40's-60's.

Please make reservations by **February 6th**.

Call: 608-592-4592 to make reservations.

Cost: \$10

Dinner With... entertainment is funded with a grant from the Community Foundation of South Central Wisconsin.

Dinner with... Casey Olson

March 14th, 5:00 pm

Casey currently lives and works in Lodi and performs regularly as a solo musician or in groups around the Madison area. Casey will take us through familiar songs from the 50's, 60's and 70's. You will be tapping your toes as these tunes bring back memories.

Please make reservations by **March 13th**.

Call: 608-592-4592 to make reservations.

Cost: \$10

Dinner With... entertainment is funded with a grant from the Community Foundation of South Central Wisconsin.



What's Happening at Reach Out Lodi

January/February/March 2023 Calendar of Events



DEMENTIA JOURNEY SUPPORT GROUP

3rd Thursday of each month 1:00-2:30 pm

Feb. 16th and Mar. 16th

(No meeting in January)

This is a support group for caregivers of people with dementia. Participants learn new information, share their experience and support each other. We learn from each other while caring for our loved one and taking care of ourselves to stay healthy through the journey.

Contact: Janet Wiegel, 608-697-2838, for more information.

Soup'r Supper

Community Meal



Tuesday, January 24th

Tuesday, February 21st

Tuesday, March 28th

5:00-6:30 pm

Come for dinner. Stay to get to know your neighbors, play cards, or just relax.

Memory Café

Words of Wisdom *on Love*



Friday, February 24th

1:00-2:30 pm

Some unique perspectives on what it takes to make love last. Fun trivia and games!

Memory Cafés are a safe and comfortable space where someone living with dementia and their care partner can socialize, listen to music, play games, and enjoy other activities.

Contact: Janet Wiegel, 608-697-2838, for more information.

Memory Café

Signs of Luck

Friday, March 24th

1:00-2:30 pm

Come join us for a little luck o' the Irish and learn what is considered "lucky" around the world! Wear your green and watch out for those leprechauns!

Memory Cafés are a safe and comfortable space where someone living with dementia and their care partner can socialize, listen to music, play games, and enjoy other activities.

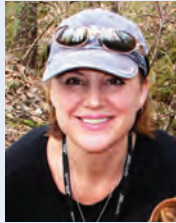
Contact: Janet Wiegel, 608-697-2838, for more information.

What's Happening at Reach Out Lodi

January/February/March 2023 Calendar of Events

Senior Yoga — with Tess Carr

Tess has a gentle, peaceful nature as she helps you with range of motion, balance and strength. This class is for EVERYONE. We invite you to come and give it a try.



JANUARY SESSION:

Tuesdays January 3rd-31st

2:00-2:45 pm

Cost: \$10 for 5 weeks.

FEBRUARY SESSION: Tuesdays February 7th-28th

2:00-2:45 pm

Cost: \$10 for 4 weeks.

MARCH SESSION: Tuesdays March 7th-25th

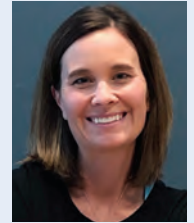
2:00-2:45 pm

Cost: \$10 for 4 weeks

Senior Yoga is funded with a grant from the Community Foundation of South Central Wisconsin.

Senior Movement — with Stephanie Caves

Stephanie will guide you through movement, strength, balance and posture exercises. She provides individualized modifications as needed and ensures success for EVERYONE.



JANUARY SESSION: Wednesdays January 4th-25th

2:00-2:45 pm

Cost: \$10 for 4 weeks.

FEBRUARY SESSION: Wednesdays February 1st-22nd

2:00-2:45 pm

Cost: \$10 for 4 weeks.

MARCH SESSION: Wednesdays March 1st-22nd

2:00-2:45 pm

Cost: \$10 for 4 weeks.

NO CLASS on March 29th.

Senior Movement is funded with a grant from the Community Foundation of South Central Wisconsin.

GAME NIGHT

For people with special needs 14 & older

Jan. 7th & 21st, Feb. 4th & 18th,
March 4th & 18th

Saturday January 7th, 5:00-7:00 pm
Dinner at 5:00 followed by board games.

Saturday January 21st, 5:00-7:00 pm
Dinner followed by Bingo with prizes!

Saturday February 4th, 5:00-7:00pm
Dinner at 5:00 followed by board games.

Saturday February 18th, 5:00-7:00pm
Happy Valentine's Day Party. Dinner at 5:00 followed by board games.

Saturday March 4th, 5:00-7:00pm
Dinner at 5:00 followed by board games.

Saturday March 18th, 5:00-7:00pm
Be Your Hero. Come dressed as your favorite hero. Dinner at 5:00 followed by board games.

Call: 608-592-4592 to make reservations.



Painting for Pleasure — with Gladys Grieger

Gladys will teach the wonderful art of painting with acrylics.

MARCH SCHEDULE:

Mondays March 6th-28th

12:30-3:00 pm

Fridays March 10th-31st

10:00 am-12:30 pm

FOR INFORMATION:

Call Gladys at 608-445-0589.

Cost: \$45.00 for 4 weeks.



Artists of the season

Students from Gladys Grieger's Painting for Pleasure classes will have their work displayed at ROL all winter (January/February/March). (Artwork shown is by June Fisk.)



What's Happening at Reach Out Lodi January/February/March 2023 Calendar of Events

Mah Jongg

Every Thursday throughout the year.
9:30-12:00 pm

This interesting and challenging game is played with small tiles. Don't know how to play? We will teach you!
No reservation needed.

Cards—Euchre

Every Thursday throughout the year.

1:00-3:00 pm

Make new friends, have fun and share a snack before you leave.
No reservation needed.



freepik.com

Wellness on Wednesday (WOW)

Wednesday January 25th
1:00-2:00 pm

Home and Personal Safety

We will talk about securing your home and personal belongings, The 9 pm Routine, and some current scam information.

Presented by: Police Chief Wayne Smith.



Wednesday February 8th

1:00-2:00 pm

Boost your Brain Health

Come and learn strategies to keep your brain healthy and happy.

Presented by: Janet Weigel,
Dementia Outreach Specialist,
Alzheimer's & Dementia Alliance of Wisconsin.



freepik.com

Wednesday March 22

1:00-2:00 pm

Safety in your Medicine Cabinet

Join Lodi Community Action Team (LCAT) as they help you navigate what to do with unused or expired medication. Learn the potential dangers of both over the counter and prescription drugs. Receive a free medication lock box!

Presented by: Paula Enger, LCAT Project Director.

WOW events are funded with a grant from the Community Foundation of South Central Wisconsin.



freepik.com



freepik.com

Reach Out Lodi Tamale Sale

**Take home and enjoy
delicious tamales!**

Call to pre-order your dozen or half dozen pork or chicken tamales today! Pick up your order at Reach Out Lodi on February 25th.

\$8 for a half dozen — \$15 for a dozen

Saturday, February 25th

Pick up between 6:00 - 7:00 pm

Please order by Friday, February 17th

Call: 608-592-4592 to place your order.

Room Rentals

The ROL Community Center has two rooms available for use. These can be reserved for family gatherings, special occasions, educational classes, celebration of life events, and civic group meetings. Call 608-592-4592 to learn more.

The Community Circle is published by Reach Out Lodi ©2023, 601 Clark Street, Lodi WI 53555, 608-592-4592, reachoutlodi@gmail.com
Editor Patti Herman; Graphic Designer Maribeth Fleischmann; Contributing Writers include Events Coordinator Penny Schmiedlin, President Jim Schmiedlin, and Managing Director Kimberly Miller.

Getting to know Bernie & Audrey Kvam

Bernie and Audrey Kvam were both born and raised in Lodi and have remained here their entire lives. Both graduated from LHS in the late 40's and ventured out to make their way into the world.

Audrey started working at Dairyland Associates in Lodi, (a seasonal cheese packing plant) and then at the Lodi Library until the fall season of cheese packing began. This went on about 2 years when the position at Dairyland became year-round and she worked there until they married in 1955.

Bernie attended MATC pursuing a Commercial Arts and Sign Writing degree. His education was interrupted by the Korean War draft. He was only in Korea for 3 months when he was called home on emergency leave as his mother was ill. While home the armistice was signed and to finish his final year of service, he was sent to Ft. Hood, Texas and was assigned to the Battalion Sign Shop. Bernie glows with pride as he talks about his service, hand-painting and designing signs, as it provided the validation he needed to be sure of his next career move.

Bernie was discharged in 1954 and found a job at Badger Display Company in Madison. Bernie & Audrey were married in 1955 and settled down in Lodi and started a family. They have two children, Kenneth and Kathy, who live nearby.

Audrey started at the Lodi Elementary School as a Health and Resource Aide in 1968 and then moved up to being Secretary to the Principal and then finishing

up her 25.5 year stint as Secretary to the Business Manager in the District Office. Meanwhile, Bernie's career took off, eventually presenting him with an opportunity to buy into Badger Display. They jumped at it and Bernie found himself as co-owner of the business.

The couple are very involved in their community and church. Bernie regularly donated his time and talent to local business and churches and Rotary (of which he has been a member for 60 years). I guess you could say there are signs of Bernie all over!

Both Bernie and Audrey retired from their careers in 1993 and Bernie started dabbling in artwork alongside some sign painting. They were privileged to spend 14 winters in Green Valley, AZ making new friends and staying warm! Two memorable trips they took were to New Zealand in 1986 for 1 month visiting an exchange student and to Norway in 2000, homeland of Bernie's ancestors.

They feel they have been truly blessed in their lives and enjoy giving back to their hometown like supporting Reach Out Lodi. They especially enjoy the monthly meals and programs and getting together with people in the community.

—By Kimberly Miller



Getting to know Pat Haberli

Pat hails from Freeport and attended High School in Galena IL. Upon graduation, Pat attended Nurses Training in Rockford from 1955-1958. After completion, Pat worked for a few years for a local doctor until she met Jim.

Pat attended a St Patrick's Day dance in Galena early in her professional career and met a

handsome man from Sturgeon Bay WI. Turned out that Jim had been attending college at UW Platteville. After a whirlwind romance, Jim and Pat were married in Galena in 1960.

After college graduation, Jim was presented with a teaching opportunity at Lodi High School. He and Pat moved into a small apartment in Lodi, and Jim took over as the 7th grade Science teacher and football coach. One of the most beloved teachers in Lodi, Jim spent almost 40 years in service to the students of the Lodi School District.

Meanwhile, Pat worked at the Sauk Hospital for a time and then moved to the Lodi Good Samaritan Center, where she remained for 35 years.

Jim & Pat eventually purchased a home in an undeveloped area in Lodi where they enjoyed raising their two daughters and son.

Pat and Jim were always involved in their church and community, Pat an active member of the Lodi Woman's Club, and Jim always very active with the Lodi student population.

Pat and Jim have been great supporters of Reach Out since its opening. Pat loves the safety and security she feels here, as well as the welcoming and friendly atmosphere. She commented that she always feels like she's family when she visits and enjoys the fellowship with other patrons during our community events.

—By Kimberly Miller

Veteran's Day Breakfast at ROL A Grand Salute to Service



Reach Out Lodi hosted a free breakfast for all Lodi area veterans and their spouses on Veteran's Day. Heroes that served in WWII, Korea, Vietnam, and the Gulf Wars assembled for fellowship and to share "sea stories". Local photographer Dave Anderson was on hand to take photos and St. Croix Hospice presented Certificates of Appreciation to all vets in attendance. Paul Fisk, Commander, Lodi Legion made a moving presentation, providing an explanation of the Missing Man's table and paying tribute to those lost.



2022 ROL Thanksgiving Community Meal



Again this year, ROL hosted a Thanksgiving Community meal. Turkey, stuffing, and all the fixings were prepared and donated by generous local volunteers. Over 163 meals were served, delivered, or taken home to enjoy. Diners appreciated the togetherness and fellowship experienced with close neighborhood friends while sharing Thanksgiving dinner. ROL is incredibly grateful to all who donated and to all the volunteers that came together to organize and put on this important event. We are all truly blessed to live in such a giving community!



Foot & Nail Care



NEW! We will be offering Foot Care and Nail Care with a registered nurse, certified in nail care. By appointment only. Watch for more information in the new year.

freepik.com

ROL Receives LACE Grant!



The Lodi Area Community Endowment (LACE) is dedicated to enhancing the quality of life in the greater Lodi area for present and future generations. In this spirit, LACE has been instrumental in providing support to Reach Out and has played a key role in our overall success.

Most recently, LACE awarded ROL a \$1,614 grant to purchase 2 additional card tables and a computer tablet for the Community Store. The card tables will be utilized for our Euchre group, as well as other community events, and the tablet is already proving to be an invaluable resource in improving communications with our Spanish speaking population.

ROL is proud to partner with LACE in cultivating positive changes in our community. Thank you for all you're doing for Reach Out and the Lodi area!

The Theater Bus

Theater Bus, Inc. is a nonprofit organization committed to enriching the quality of life for all adults over 55 residing in the greater Madison community by providing safe, affordable escorted outings to theatrical, cultural and social events. The Theater Bus will purchase your tickets to a play or musical, provide transportation, lunch and all tips for around \$125.00.

Some of ROL's patrons are interested in this adventure but are concerned about driving to Madison to meet the bus. We are investigating ways to transport you to and from the Theater Bus in Madison. If you are interested in being part of a theater group leaving from ROL please call us. If there is an interest we will have a meeting in February to plan a spring trip.

To join a February planning meeting call ROL at 608-592-4592

freepik.com

COMMUNITY STORE TOP 10 WISH LISTS

Top 10 Food

1. Sugar
2. Salt
3. Mayonnaise
4. Peas (canned)
5. Black Beans (canned)
6. Ramen
7. Mustard
8. Cooking Oil
9. Juice (large bottles)
10. Saltine Crackers

Top 10 Personal Essentials

1. Garbage Bags (Size 13 & 30)
2. Razors (M & W)
3. Paper Towels
4. Laundry Detergent/Dryer Sheets
5. Household Cleaning Products
6. Tissue (Kleenex or Puffs)
7. Toothpaste (full sized)
8. Bar Soap
9. Body Wash
10. Baby Wipes

Top Clothing Items

1. New underwear and socks
Girls' 2 & 16
Boys' 2 & 18
Women's Sm, Med, Lg
& Men's Sm, Med
2. Winter Coats, mittens and gloves, all sizes, kids & adults
3. Men's shirts sizes Sm, Med, Lg
4. Girls' pants 6-8, 14-16
5. Boys pants 16-20

Volunteer Corner

A DAY IN THE LIFE OF A VOLUNTEER AT REACH OUT LODI COMMUNITY STORE

A lifelong resident of Lodi and the surrounding area, I watched with wonder as Reach Out Lodi grew in our community. I became interested in volunteering initially after my employer began offering volunteering incentives. I immediately knew I wanted to give my time to Reach Out.

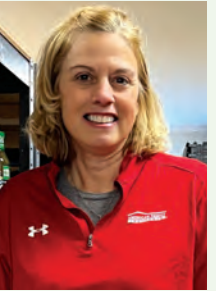
I volunteered for the Community Store. Wow, I was busy! Despite not knowing much about the process of helping customers, the other volunteers were so patient and helpful in assisting me with anything I needed. It was great to have such wonderful support!

During my initial shift, I had 4 customer appointments. I assisted them with their shopping, bagged their groceries, and then helped

them to their car. Customers were so appreciative and thankful. Their sentiments melted my heart and left me with a feeling of being blessed.

Overall, it was a fantastic experience. I am so glad I volunteered! It's a great way to get to know community members and see firsthand the needs of those in our community.

I will definitely continue to volunteer at Reach Out. The experience has convinced me that there is real good in the world, and I want to be part of it!



—Deanna Gilles

Customer Comments

Luis and Geydi love Reach Out Lodi for its comfortable and welcoming atmosphere and friendly, kind-hearted volunteers. They've lived in the Lodi area for a while now and have shopped at ROL several times. Luis specifically expressed his gratefulness that ROL is here to provide a safety net when his work gets slow, especially during the winter months.



Today he and Geydi picked up their Thanksgiving meal and were also shopping for a winter coat for a friend that doesn't have one. Luis commented that it makes him feel good to be able to help others because of Reach Out Lodi.

Luis and Geydi will host a small gathering for Thanksgiving and are most thankful to Reach Out for making it possible!

—Kimberly Miller

Many Thanks!



Lodi Middle Schoolers collected 169 lbs of candy to donate to active duty service members. Lodi Valley Dental matched their donation, giving \$1 to ROL for every pound collected. Thank you Ms. Howe, LMS, and Lodi Valley Dental!



Dane Dandy Doers

Donations from the Dane Dandy Doers, "Trick or Treat so Others can Eat" food drive. Pictured is Lynn Deans delivering the haul. We greatly appreciate your help in keeping our shelves filled with these much needed supplies.



Warm Thoughts

Vince & Judy Miller donated three Nesco roasters for use in serving the Community Thanksgiving meal and other dinners at ROL.



Underwear Avalanche

A friend of ROL did an online drive that specifically targeted fulfilling the need for children's underwear. She and her friends, family, and business associates contributed over 400 packages. Mission accomplished!



Hams for Christmas

1....2....3....36! Yes 36! Howie and Asta Blanchard donated 36 hams to ROL for our customers holiday meals. What a generous way to celebrate Christmas.



Stuff the Turkey

Lodi Primary school students and staff hosted "Stuff the Turkey" donation drive. So much was collected, the turkey exploded!

The City of Lodi & Lodi Utilities Joint Effort Proves Positive for ROL

Citizens brought in donations of food and personal essentials on election day. Then, Lodi Utilities matched one dollar for every item collected from voters and gave ROL a check for \$1,000. Thank you City of Lodi voters, City of Lodi and Lodi Utilities for this grand gesture! Pictured are Brenda Ayers and James Lincoln who organized this event.



Toys for Kids

Whitney Haboush of Dollar General in Lodi donated proceeds (6 HUGE bags!!) from their toy drive to Reach Out Lodi. There will be lots of happy kids this Christmas!! Thank you Whitney & Dollar General customers!!



Wisconsin Cares

Reach Out Lodi received a grant of \$10,000 from the Community Foundation of South Central Wisconsin from the Harland & Lorraine Hartmann Fund. With this funding we will continue our mission of providing a safe and welcoming Community Center where people can gather and a Community Store for folks in need. This continued support of our organization is greatly appreciated.



freepik.com

Divine Donations

➔ Blessed Trinity Church collected items for our Community Store and Giving Tree. Items included towels, bedding, diapers, coats, gloves and hats for all ages. Thank you Blessed Trinity Church! (Half donation shown.)



◀ Lake Wisconsin Evangelical Free Church donated \$500 to ROL, proceeds from their Kettle Corn fundraiser. Jim & Linda Krinke (shown) donated an additional \$500. Much appreciated.

➔ Mitch Falk & Erica Bardwell presented much needed personal essentials collected from the New Life Christian Church congregation. Very generous—thank you so much!



Many Thanks! (Continued)

Good Students



Lodi OSC along with Lodi Elementary School brought in donations of food items and personal essentials during the holiday season. Students were given a tour of ROL and learned more about how to help their community. Thank you teachers for showing our young people what a supportive community looks like!

Coats for All!

The Lodi & Lake Wisconsin Chamber of Commerce is amazing! They are helping to keep people warm this winter by organizing a coat drive. The coats arrived recently and we are overwhelmed with gratitude. Thank you to everyone who participated, and Heidi LeHew, Director, for organizing.



Random Acts of Kindness

We do our very best to thank everyone that donates to Reach Out by recognizing them with a photo in our quarterly Community Circle newsletter. This year, however, Lodi's holiday spirit has been overwhelmingly generous, and we just can't make all the photos fit (you can always check them out on Facebook though!)

Please join ROL in recognizing the businesses and individuals listed below for their big hearts and selfless charitable giving!

- Leah Arndt of Jetz Farm, LLC, donated warm hats, gloves, and socks. Know that your efforts will keep lots of Lodi residents protected from the harsh Wisconsin winter. Very much appreciated!
- For the second year in a row, Mystical Nails in Waunakee hit the pavement and collected food items and cash to donate. Way to help out a neighboring community! You guys rock!
- Laura Graff & Marcia Schaefer of Spring Valley Chiropractic hosted a food drive for the entire month of November and delivered proceeds to ROL. A million thanks, ladies!!
- The Kevin & Jane Maier family and friends collected essential items for the community store. In addition, they collected \$200 for personal items. Thank you! Thank you!
- Prairie Winds Flower Market (Lodi) offered photos with Santa at the flower shop in exchange for 3 nonperishables or a monetary donation to support Reach Out. Very creative!
- Denis & Sharon Jones from the Dells Area Cruisers made a donation of \$250 from a car show they host every year. Thank you for including ROL in your season of giving.

Support Reach Out Lodi Inc.

When you shop at smile.amazon.com, Amazon donates.

[Go to smile.amazon.com](https://smile.amazon.com)

AmazonSmile is a simple way for you to support Reach Out Lodi. Every time you shop, AmazonSmile will donate 0.5% of your eligible purchases to ROL, at no cost to you.

January

Sunday	Monday	Tuesday	Wednesday	Thursday	Friday	Saturday
1 ROL Rented 12:00 pm	2 CLOSED	3 + Senior Yoga 2:00-2:45 pm	4 Optimists Executive Meeting 10:30 am Optimists 12:00 pm + Senior Movement 2:00-2:45 pm	5 Mah Jongg 9:30-12:00 pm Transition Program Euchre 1:00-3:00 pm Kitchen Rented 5 pm	6	7 Game Night 5:00-7:00 pm
8 Common Ground Church 9:00-11:00 am ROL Rented 1:00 pm Boy & Girl Scouts 5:00-8:00 pm	9	10 Senior Yoga 2:00-2:45 pm Dinner With... First Impressions 5:00-7:00 pm	11 Senior Movement 2:00-2:45 pm	12 Mah Jongg 9:30-12:00 pm Euchre 1:00-3:00 pm Kitchen Rented 5 pm	13	14
15 Common Ground Church 9:00-11:00 am	16 MLK Jr. Day	17 Senior Yoga 2:00-2:45 pm	18 Optimists 12:00 pm Senior Movement 2:00-2:45 pm	19 Mah Jongg 9:30-12:00 pm Transition Program Euchre 1:00-3:00 pm Kitchen Rented 5 pm Ice Age Trail 7:00 pm	20	21 Game Night 5:00-7:00 pm
22 Common Ground Church 9:00-11:00 am	23	24 Senior Yoga 2:00-2:45 pm Soup'r Supper 5:00-6:30 pm	25 WOW Personal Safety 1:00-2:00 pm Senior Movement 2:00-2:45 pm	26 Mah Jongg 9:30-12:00 pm Euchre 1:00-3:00 pm Kitchen Rented 5 pm	27	28
29 Common Ground Church 9:00-11:00 am Boy & Girl Scouts 5:00-8:00 pm	30	31 Senior Yoga 2:00-2:45 pm		<p>NEW SESSION</p> <p>+ =</p> <p>● = ROL Event</p> <p>● = Other</p>		

February

Sunday	Monday	Tuesday	Wednesday	Thursday	Friday	Saturday
	<p>NEW SESSION</p> <p>† = ROL Event</p> <p>● = Other</p>		<p>1</p> <p>Optimists Executive Meeting 10:30 am</p> <p>Optimists 12:00 pm</p> <p>† Senior Movement 2:00-2:45 pm</p>	<p>2</p> <p>Mah Jongg 9:30-12:00 pm</p> <p>Transition Program</p> <p>Euchre 1:00-3:00 pm</p> <p>Kitchen Rented 5 pm</p>	<p>3</p>	<p>4</p> <p>Game Night 5:00-7:00 pm</p>
<p>5</p> <p>Common Ground Church 9:00-11:00 am</p> <p>Boy & Girl Scouts 5:00-8:00 pm</p>	<p>6</p>	<p>7</p> <p>† Senior Yoga 2:00-2:45 pm</p> <p>Dinner With... Finding North 5:00-7:00 pm</p>	<p>8</p> <p>WOW</p> <p>Brain Health 1:00-2:00 pm</p> <p>Senior Movement 2:00-2:45 pm</p>	<p>9</p> <p>Mah Jongg 9:30-12:00 pm</p> <p>Euchre 1:00-3:00 pm</p> <p>Kitchen Rented 5 pm</p>	<p>10</p>	<p>11</p>
<p>12</p> <p>Superbowl Sunday</p> <p>Common Ground Church 9:00-11:00 am</p>	<p>13</p>	<p>14</p> <p>Valentine's Day</p> <p>Senior Yoga 2:00-2:45 pm</p>	<p>15</p> <p>Optimists 12:00 pm</p> <p>Senior Movement 2:00-2:45 pm</p>	<p>16</p> <p>Mah Jongg</p> <p>Transition Program</p> <p>Dementia Journey Support Group 1:00-2:30 pm</p> <p>Euchre 1:00-3:00 pm</p> <p>Ice Age Trail 7 pm</p>	<p>17</p> <p>Tamale Sale</p> <p>Order Deadline</p>	<p>18</p> <p>Game Night 5:00-7:00 pm</p>
<p>19</p> <p>Common Ground Church 9:00-11:00 am</p> <p>Boy & Girl Scouts 5:00-8:00 pm</p>	<p>20</p> <p>President's Day</p>	<p>21</p> <p>Senior Yoga 2:00-2:45 pm</p> <p>Soup'r Supper 5:00-6:30 pm</p>	<p>22</p> <p>Senior Movement 2:00-2:45 pm</p>	<p>23</p> <p>Mah Jongg 9:30-12:00 pm</p> <p>Euchre 1:00-3:00 pm</p> <p>Kitchen Rented 5 pm</p>	<p>24</p> <p>Kitchen Rented 8:00</p> <p>Memory Café 1:00-2:30 pm</p>	<p>25</p> <p>Kitchen Rented 9:00-5:00 pm</p> <p>Tamale Sale at ROL! Pick up 6:00-7:00 pm</p>
<p>26</p> <p>Common Ground Church 9:00-11:00 am</p>	<p>27</p>	<p>28</p> <p>Senior Yoga 2:00-2:45 pm</p>				

March

Sunday	Monday	Tuesday	Wednesday	Thursday	Friday	Saturday
	<p>NEW SESSION</p> <p>† = NEW SESSION</p> <p>● = ROL Event</p> <p>● = Other</p>		<p>1</p> <p>Optimists Executive Meeting 10:30 am</p> <p>Optimists 12:00 pm</p> <p>† Senior Movement 2:00-2:45 pm</p>	<p>2</p> <p>Mah Jongg 9:30-12:00 pm</p> <p>Transition Program</p> <p>Euchre 1:00-3:00 pm</p> <p>Kitchen Rented 5 pm</p>	<p>3</p>	<p>4</p> <p>Game Night 5:00-7:00 pm</p>
<p>5</p> <p>Common Ground Church 9:00-11:00 am</p> <p>Boy & Girl Scouts 5:00-8:00 pm</p>	<p>6</p> <p>† Painting for Pleasure 12:30-3:00 pm</p>	<p>7</p> <p>† Senior Yoga 2:00-2:45 pm</p>	<p>8</p> <p>Senior Movement 2:00-2:45 pm</p>	<p>9</p> <p>Mah Jongg 9:30-12:00 pm</p> <p>Euchre 1:00-3:00 pm</p> <p>Kitchen Rented 5 pm</p>	<p>10</p> <p>† Painting for Pleasure 10:00-12:30 pm</p>	<p>11</p>
<p>12</p> <p>Daylight Savings Time</p> <p>Common Ground Church 9:00-11:00 am</p>	<p>13</p> <p>Painting for Pleasure 12:30-3:00 pm</p>	<p>14</p> <p>Senior Yoga 2:00-2:45 pm</p> <p>Dinner With... Casey Olson 5:00-7:00 pm</p>	<p>15</p> <p>Optimists 12:00 pm</p> <p>Senior Movement 2:00-2:45 pm</p>	<p>16</p> <p>Mah Jongg 9:30-12:00 pm</p> <p>Transition Program</p> <p>Euchre 1:00-3:00 pm</p> <p>Dementia Journey Support Group 1:00-2:30 pm</p>	<p>17</p> <p>St. Patrick's Day</p> <p>Painting for Pleasure 10:00-12:30 pm</p>	<p>18</p> <p>Game Night 5:00-7:00 pm</p>
<p>19</p> <p>Common Ground Church 9:00-11:00 am</p> <p>Boy & Girl Scouts 5:00-8:00 pm</p>	<p>20</p> <p>Painting for Pleasure 12:30-3:00 pm</p>	<p>21</p> <p>Senior Yoga 2:00-2:45 pm</p>	<p>22</p> <p>WOW Medication Safety 1:00-2:30 pm</p> <p>Senior Movement 2:00-2:45 pm</p>	<p>23</p> <p>Mah Jongg 9:30-12:00 pm</p> <p>Euchre 1:00-3:00 pm</p> <p>Kitchen Rented 5 pm</p>	<p>24</p> <p>Painting for Pleasure 10:00-12:30 pm</p> <p>Memory Café 1:00-2:30 pm</p>	<p>25</p> <p>Game Night 5:00-7:00 pm</p>
<p>26</p> <p>Common Ground Church 9:00-11:00 am</p>	<p>27</p> <p>Painting for Pleasure 12:30-3:00 pm</p>	<p>28</p> <p>Senior Yoga 2:00-2:45 pm</p> <p>Soup'r Supper 5:00-6:30 pm</p>	<p>29</p> <p>NO Senior Movement</p>	<p>30</p> <p>Mah Jongg 9:30-12:00 pm</p> <p>Euchre 1:00-3:00 pm</p> <p>Kitchen Rented 5 pm</p>	<p>31</p> <p>Painting for Pleasure 10:00-12:30 pm</p>	

GIVING TUESDAY



Thank you to all who participated in our first GivingTuesday fundraiser. GivingTuesday is the Tuesday after Thanksgiving and is a movement that unleashes the power of radical generosity around the world! Whether it's making someone smile or giving some of what we have to those who need our help, every act of generosity counts, and everyone has something to give.

As was seen on social media, written in letters to past supporters, and spread via word of mouth, ROL's goal was to raise \$10,000 which would "Stock the Shelves" for 25 families for one month.

We surpassed this goal by raising \$22,770!!

Thank you to everyone who donated and supported ROL in this worldwide fundraising effort.

Together
we gave.

Nov. 29, 2022

Thank You!

We couldn't have
done it without you!

Supporting Your Community

Reach Out Lodi (ROL) has been blessed with generous support from all corners of our community. Gifts from people like you allow us to provide a safe and welcoming Community Center where youth and adults gather for a variety of special events and activities. The Community Store helps families and individuals who are experiencing difficulties provide for their basic living needs. What we do collectively is very important in sustaining our overall community "quality of life."

There are several ways that you can help sustain programs and services at ROL, including:

- Consider giving on a consistent, ongoing basis, i.e., monthly, quarterly, semi-annually or annually
- Purchase an 8" x 8" or 4" x 8" engraved tile to be placed on our Wall of Honor with your name, name of a loved one, family or business
- Include ROL in your estate planning
- Donate stocks or bonds
- Utilize ROL website for credit card donations, reachoutlodi.org
- Apply to become a volunteer

For more information contact Kimberly Miller or Jim Schmiedlin at 608-592-4592, or stop in at the Community Center to discuss how you can help support Reach Out Lodi.



freepik.com