

Community Circle

April/May/June 2021

Keeping the Lodi
Community in the Loop

Quote of the Month

"A little flower that blooms in May
A lovely sunset at the end of a day

Someone helping a stranger
along the way
That's Heaven to me."

—Sam Cooke



Community Center and Community Store

601 Clark Street
Lodi, WI 53555
Mailing address: P.O. Box 316
Lodi, WI 53555
reachoutlodi@gmail.com
reachoutlodi.org
608-592-4592

Find us on 

Community Store Hours:

Monday - Friday
8:30am-3:30pm
Saturday 8:30am-11am
By appointment

Community Center Hours:

Monday - Friday
8:30am-3:30pm
Saturday 8:30am-11am

Reach Out Lodi Community Store is a 501(c) (3) non-profit agency supported by donations and some grants. We charge no fees for our customers.



Jim Schmiedlin

Working Together Makes A Huge Difference

In the midst of uncertainty, caused by the COVID-19 pandemic, Reach Out Lodi (ROL) has had to change the way we conduct our business. First and foremost we have focused on keeping our building clean and safe by following CDC guidelines like wearing masks, socially distancing, reducing the number of people in the building, washing hands, routinely sanitizing everything from light switches, doorknobs, and shopping carts. We also electronically check body temperature as part of our protocol.

Since March of 2020 the ROL Community Center has been used restrictively. Many programs and services were canceled, for example, educational, recreational, and socialization opportunities. The ROL Community Store, however, has remained open daily to provide basic living needs, for families with seemingly insurmountable struggles, like clothing, personal care items, dental products, household cleaning supplies, food, utility and rental assistance, auto repair, delivery and transport services, and finding shelter for the homeless.

During the pandemic there has been a reported 65% increase of families experiencing food insecurity across the country. Many workers have lost their jobs, or their work hours were significantly reduced, making it difficult to pay rent, utility bills, purchase gas, and so on. The good news is that ROL, regardless of all the hardships many of our neighbors are experiencing, has been able to answer the call, by providing assistance using ROL resources or redirecting people to other resources that can help.

Our Board of Directors, caring staff, and outstanding volunteers, are so grateful that we have generous supporters who have our back during these challenging times. Because of them we have remained strong and visible working in partnership with the greater community of Lodi.

Thank you for your trust and support in what we do and for the role you play in strengthening our community and keeping our vision moving forward into the years ahead. Soon we will be launching our 2021 funding appeal and hope you will honor us with a gift, large or small, that will allow us to continue to make the Lodi area a vibrant community where all people thrive. By rising up for others we can all make a difference.

With Sincere Gratitude,

Jim Schmiedlin

Reach Out Lodi

65%

What's Happening at Reach Out Lodi

April/May/June 2021 List of Events



Thank you to everyone who supported Tasty Tuesday by cooking, packing, delivering and eating our home cooked comfort meals.

Tasty Tuesday has been fun, challenging and a success for everyone here at Reach Out Lodi. We have prepared 65-80 meals every Tues. from Dec. 1 through March 30. It has given us the opportunity to connect with so many friends and find out how you are doing through this long winter. Please let us know if you enjoyed it and if you would like to participate again next winter.

Now as we put the winter behind and head into spring with so many of our friends having received their COVID19 injections we are planning to slowly and carefully open a few activities.



Calling... All Euchre Players

Euchre is coming back to Reach Out in May with some important restrictions.

EUCHRE every Thursday starting on May 6, 1:00-2:30pm

Restrictions:

- All card players must have received their COVID19 injections.
- Masks must be worn at all times.
- Temperatures will be taken.
- Hands must be sanitized.
- Food and drinks are not allowed at this time.
- All table and chairs will be sanitized before and after each get together.

If you do not feel comfortable playing cards at this time please wait a month or two. We will be here for



you when you feel comfortable coming back. If we feel at anytime there is a safety problem we will cancel this group activity.

Senior Yoga — With Tess Carr

Tess has a gentle, peaceful nature as she helps us with range of motion, balance and strength. This class is for EVERYONE, come and give it a try.

SESSION 1: Tuesdays May 4th-25th 3:00-3:45 pm

Cost: \$10 for 4 weeks.

SESSION 2: Tuesdays June 1-22nd 3:00-3:45 pm

Cost: \$10 for 4 weeks.

Restrictions:

- This class is restricted to 15 students who have received their COVID19 injections.
- Masks must be worn at all times.
- Temperatures will be taken.
- All chairs are sanitized before and after class.
- Chairs will be placed 6ft. apart.

Call: 592-4592 to reserve a spot



Painting for Pleasure — with Gladys Grieger

Gladys will teach the wonderful art of painting with acrylics.

SESSION 1: Mondays June 7-28 12:30-3:00pm

Cost: \$45.00 for 4 weeks.

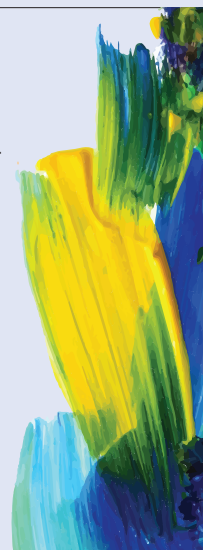
SESSION 2: Mondays July 12-Aug. 2 12:30-3:00pm

Cost: \$45.00 for 4 weeks.

FOR INFORMATION: Call Gladys at (608) 445-0589

Restrictions:

- Class is restricted to 9 participants who have received their COVID19 injections.
- Masks must be worn at all times.
- Each student will have their own table.
- Tables are 6ft apart and will be sanitized before and after class.



freepik.com

Tasty Tuesday with...The Trippers Lite Band

We are excited to welcome back...the Trippers!

Tuesday May 11th, 5:30 pm

We will offer a Picnic Style meal outdoors at Reach Out Lodi, complete with utensils and beverages. Our picnic will be followed at 6:00 pm with entertainment by the Trippers. The band offers a large variety of music including gospel, old country, bluegrass and folk.

We ask all picnic goers to continue to wear a mask when not eating. Please bring your own folding chairs. We will help you with your chairs.

Come for food, fun and the Trippers!

Reservations must be made *before* May 11 at ROL, call 592-4592 for reservations or questions. **Free will offering.**

Rain date Wednesday May 12 same time and place.



Corona virus Food Assistance Program

2020 was a year of many challenges. The pandemic created stress, heartbreak, sadness, grief, worry, and confusion for people throughout our community and beyond. Reach Out Lodi's (ROL) food, clothing, and personal essentials distribution increased significantly because of demand.

To meet the needs of growing food insecurity in our area ROL partnered with the Second Harvest of Southern Wisconsin Corona virus Food Assistance Program and the Lodi Public Schools to distribute food to a growing number of families. From June through December 2020 ROL organized 21 mobile food distributions at the Lodi Elementary School. The number of families served varied between 270 and 320.

During 2020 Second Harvest provided 34,486 pounds of food valued at \$51,384. A team of over 30 exceptional ROL volunteers loaded family vehicles with needed food.

We are grateful for the partnership of Second Harvest, Lodi Public Schools, and the role volunteers play in strengthening our community. ROL looks forward to the work we will continue to do together in 2021.



Reach Out Lodi Needs You To Save To Give!

Focus on Energy selected Lodi Utilities to participate in a new and unique program. **Save to Give** offers residents the opportunity to save energy in their home while earning up to \$25,000 for local nonprofits.

This winter **110 residential customers** signed up raising **\$5,600** for 3 local nonprofits, including ROL. This amount is from Focus on Energy and includes an added incentive from Lodi Utilities challenging 100 families to sign up for an award of \$900 to be divided between 3 nonprofits.

The summer campaign begins **June 14th**. Households enrolled record what they're doing each week to save energy. Those enrolled in the winter program, will automatically earn points in the summer with their weekly actions and recordings.

Challenge yourself and your neighbors to get involved. **SAVE** energy, **EARN** big (for local nonprofits).

Don't wait to sign up! Enroll in the free program today to support Reach Out Lodi at www.myaccount.lodiutilities.org.



Time to Grow Again!

As spring arrives, even faced with our current challenges, gardening season comes with it. There is an old zen adage that when life is complicated one should remember to haul water, chop wood — go to the basics of life. I would add to that, dig dirt!



The Reach Out Lodi Community Garden is now open for gardeners to reserve a plot. The garden is located right by the ROL community center at 601 Clark Street. Plots that are 20' x 20' can be reserved for \$20 on a first come, first served basis. Some half plots may be available. At the end of last year we added several more plots to the garden so there is room for many new gardeners. There are tools and water available there... all you need to bring is your seeds and plants and enthusiasm!

The Community Garden is there to give individuals and families the opportunity to grow food and flowers. A well planned garden plot can produce up to \$800 worth of food. There is a satisfaction one feels when you produce food for your table with your own hands. If you are new to gardening there is help available from experienced gardeners to assist and mentor you.

For more information contact Reach Out Lodi at (608) 592-4592.

Supporting Your Community

Reach Out Lodi (ROL) has been blessed with generous support from all corners of our community. Gifts from people like you allow us to provide a safe and welcoming Community Center where youth and adults gather for a variety of special events and activities. The Community Store helps families and individuals who experience difficulties provide for their basic living needs. What we do collectively, as ROL supporters, is very important in sustaining our overall community "quality of life."

There are several ways that you can help sustain programs and services at ROL, they include:

- Consider giving on a consistent ongoing basis, i.e., monthly, quarterly, semi-annually, or annually.
- Purchase an (8" x 8") or (4" x 8") engraved tile to be placed on our Wall of Honor with your name, name of a loved one, family or business.
- Include ROL in your estate planning.
- Donate stocks or bonds.
- Apply to become a volunteer.

For more information contact Mary Wilkes or Jim Schmiedlin at 608-592-4592, or stop at the Community Center and discuss how you would like to help support ROL.

