

WHO WE ARE

Alzheimers Society Manawatu (ASM) covers the Manawatu, Horowhenua, Tararua and Otaki regions.

ASM seeks to destigmatize dementia, reconnect those who have become socially isolated and empower people through education, advice and guidance to take ownership of their own health and wellbeing.

We're committed to:

- Providing support to people with dementia, their families/whanau, friends and carers
- Education and informing the public and associated professionals about dementia
- Raising government awareness and encouraging action by highlighting the needs of people affected by dementia



CONTACT US

Main Office

642 Featherston Street, Palmerston North 4414

Phone:

06 357 9539

Email:

manawatu@alz-man.org.nz

Website:

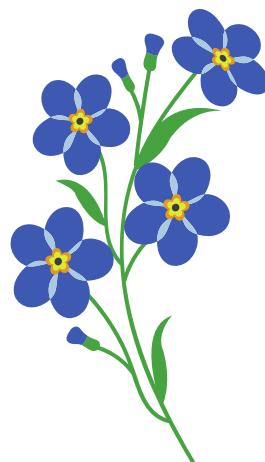
www.alzheimersmanawatu.org



@alzheimersmanawatu



Alzheimers Manawatu



Current at date of publish of May 2025



Manawatu

Marion Kennedy Centre

CARER SUPPORT GROUPS

Palmerston North, Feilding, Dannevirke and Levin



Supporting people affected by dementia throughout the district

Alzheimers Manawatu

Marion Kennedy Centre

CARER SUPPORT GROUPS

A place to come to relax and spend time with others who understand what you're going through. Have a cuppa and a chat for an hour or two with others who are experiencing similar behaviours and actions from their loved ones with dementia.

Support groups are an option for carers/families and loved ones to enjoy the ongoing support of others who have similar experiences as yours. They are an opportunity to meet other people who are in a similar position; share what it is like to care for someone with memory loss; learn from each other; gain practical ideas for coping and gain knowledge about dementia.

Contact the Dementia Advisors:

Andrea Hodgetts: 027 357 9560
(Manawatu & Taranaki)

Liam Walsh: 027 600 4408
(Palmerston North
& Horowhenua)

Please call 06 357 9539 or
email manawatu@alz-man.org.nz for
more details.



PALMERSTON NORTH

Where: Marion Kennedy Centre,
642 Featherston Street

Time: 10am-12noon

When: First Wednesday each month

Facilitator: Liam or Andrea

Phone: 06 357 9539 ext 204 or 207

PALMERSTON NORTH MEN'S CARER SUPPORT GROUP

Where: Marion Kennedy Centre,
642 Featherston Street

Time: 10am-12noon

When: First Friday each month

Facilitator: Liam Walsh

Phone: 027 600 4408

DANNEVIRKE

Where: The HUB
Entry via carpark Allardice St

Time: 10am-12noon

When: First Thursday each month

Facilitator: Andrea Hodgetts

Phone: 027 357 9560

LEVIN MEN'S CARER SUPPORT GROUP

Where: Freemasons Centre, cnr Parker
and Power Street

Time: 12.30pm-2.30pm

When: Fourth Friday each month

Facilitator: Liam Walsh

Phone: 027 600 4408

LEVIN

Where: Freemasons Centre, cnr Parker
and Power Street

Time: 12.30pm-2.30pm

When: Fourth Wednesday each month

Facilitator: Liam Walsh

Phone: 027 600 4408

FEILDING

Where: St John, 33 Bowen Street

Time: 10am-12noon

When: First Monday each month

Facilitator: Andrea Hodgetts

Phone: 027 357 9560