

## WHO WE ARE

Alzheimers Society Manawatu (ASM) covers the Manawatu, Horowhenua, Tararua and Otaki regions.

ASM seeks to destigmatize dementia, reconnect those who have become socially isolated and empower people through education, advice and guidance to take ownership of their own health and wellbeing.

We're committed to:

- Providing support to people with dementia, their families/whanau, friends and carers
- Education and informing the public and associated professionals about dementia
- Raising government awareness and encouraging action by highlighting the needs of people affected by dementia



## CONTACT US

### Main Office

642 Featherston Street, Palmerston North 4414

### Phone:

06 357 9539

### Email:

manawatu@alz-man.org.nz

### Website:

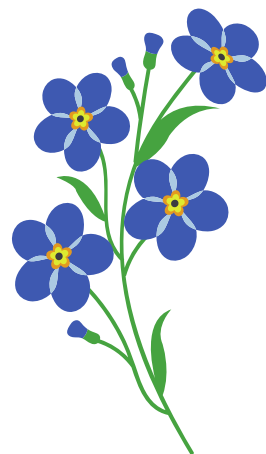
www.alzheimersmanawatu.org



@alzheimersmanawatu



Alzheimers Manawatu



*Manawatu*

Marion Kennedy Centre

## CARER SUPPORT GROUPS

Held in Palmerston North, Feilding, Dannevirke, Levin and Otaki



Supporting people affected by dementia throughout the district

**Alzheimers Manawatu**

Marion Kennedy Centre

# CARER SUPPORT GROUPS

A place to come to relax and spend time with others who understand what you're going through. Have a cuppa and a chat for an hour or two with others who are experiencing similar behaviours and actions from their loved ones with dementia.

Support groups are an option for carers/families and loved ones to enjoy the ongoing support of others who have similar experiences as yours. They are an opportunity to meet other people who are in a similar position; share what it is like to care for someone with memory loss; learn from each other; gain practical ideas for coping and gain knowledge about dementia.

Anne Lowry: 027 357 9543  
(Horowhenua)

Andrea Hodgetts: 027 357 9560  
(Manawatu & Tararua)

Liam Walsh: 027 600 4408  
(Palmerston North)

Please call us on 06 357 9539 or email [manawatu@alz-man.org.nz](mailto:manawatu@alz-man.org.nz) for more details.

## PALMERSTON NORTH

**Where:** Marion Kennedy Centre, 642 Featherston Street  
**Time:** 1pm-3pm  
**When:** First Tuesday each month  
**Facilitator:** Liam Walsh  
**Phone:** 021 100 4408

**Where:** Marion Kennedy Centre, 642 Featherston Street  
**Time:** 10am-12pm  
**When:** Last Wednesday each month  
**Facilitator:** Andrea Hodgetts  
**Phone:** 027 357 9560



## FEILDING

**Where:** St Johns, 33 Bowen Street  
**Time:** 10am-12pm  
**When:** First Monday each month  
**Facilitator:** Andrea Hodgetts  
**Phone:** 027 357 9560

## DANNEVIRKE

**Where:** The HUB, 23 Gordon Street  
**Time:** 10am-12pm  
**When:** First Thursday each month  
**Facilitator:** Andrea Hodgetts  
**Phone:** 027 357 9560



## LEVIN

**Where:** Freemasons Centre, cnr Parker and Power Street  
**Time:** 1pm-3pm  
**When:** First Wednesday each month  
**Facilitator:** Anne Lowry  
**Phone:** 027 357 9543

## OTAKI

**Where:** To be advised  
**Time:** To be advised  
**When:** First Friday each month  
**Facilitator:** Jill Watson  
**Phone:** 027 357 9543 (Anne Lowry)