

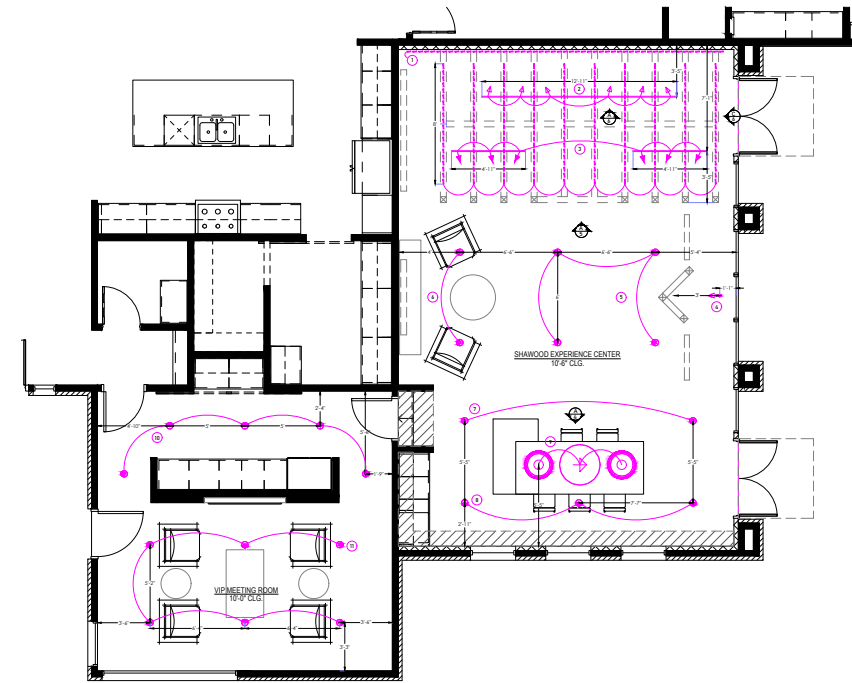
Residential Design

[Shawood Experience Center]
Woodside Homes

2024, Sommers Bend, Temecular, CA, USA



SHAWOOD EXPERIENCE CENTER - CONCEPTUAL PLAN
INTERIOR LIGHTING PLAN



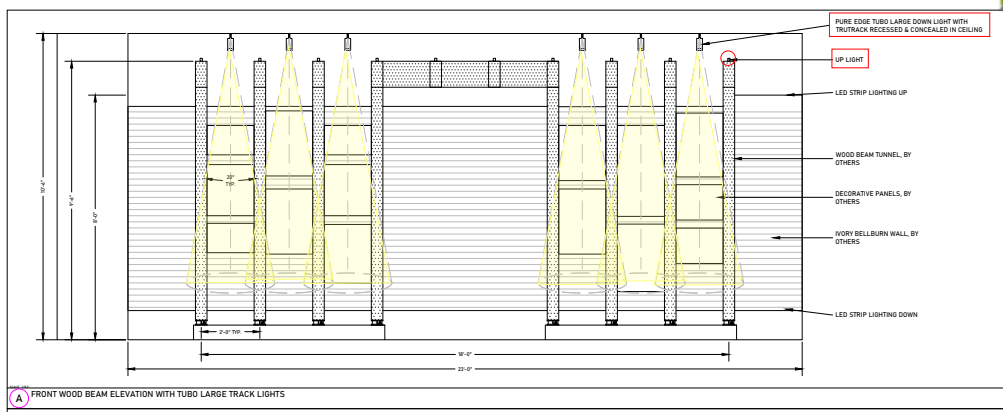
Type	Symbol	Qty	Light / CCT	Manufacture
T1	→	6	LED, 3000K	PURE EDGE LIGHTING, TUBO LARGE (FOR DISPLAY ART IN TUNNEL)
T2	→	6	LED, 3000K	PURE EDGE LIGHTING, TUBO SMALL (FOR BELLBURN WALL IN TUNNEL)
T3	→	1	LED, 3000K	PURE EDGE LIGHTING, RADIANT LARGE (MONOPOINT SPOT LIGHT FOR MOCK-UP)
L1	—	88' x 10' + 808'	LED, 3000K	MELVIX LIGHT (ON THE WOOD BEAM TOWARDS CEILING)
L2	—	218' x 2' + 428'	LED, 3000K	MELVIX LIGHT (INDIRECT LIGHT FOR BELLBURN WALL)
D1	●	22	LED, 3000K	ALPHABET LIGHTING TRIM LESS ADJUSTABLE DOWN (NUS-RAT-09W-15LM-30K-90-3SD)
P1	⊕	1	LED, 3000K	LUCE PLAN - ILLAN (MEDIUM PENDANT)
P2	⊕	2	LED, 3000K	LUCE PLAN - ILLAN (SMALL PENDANT)



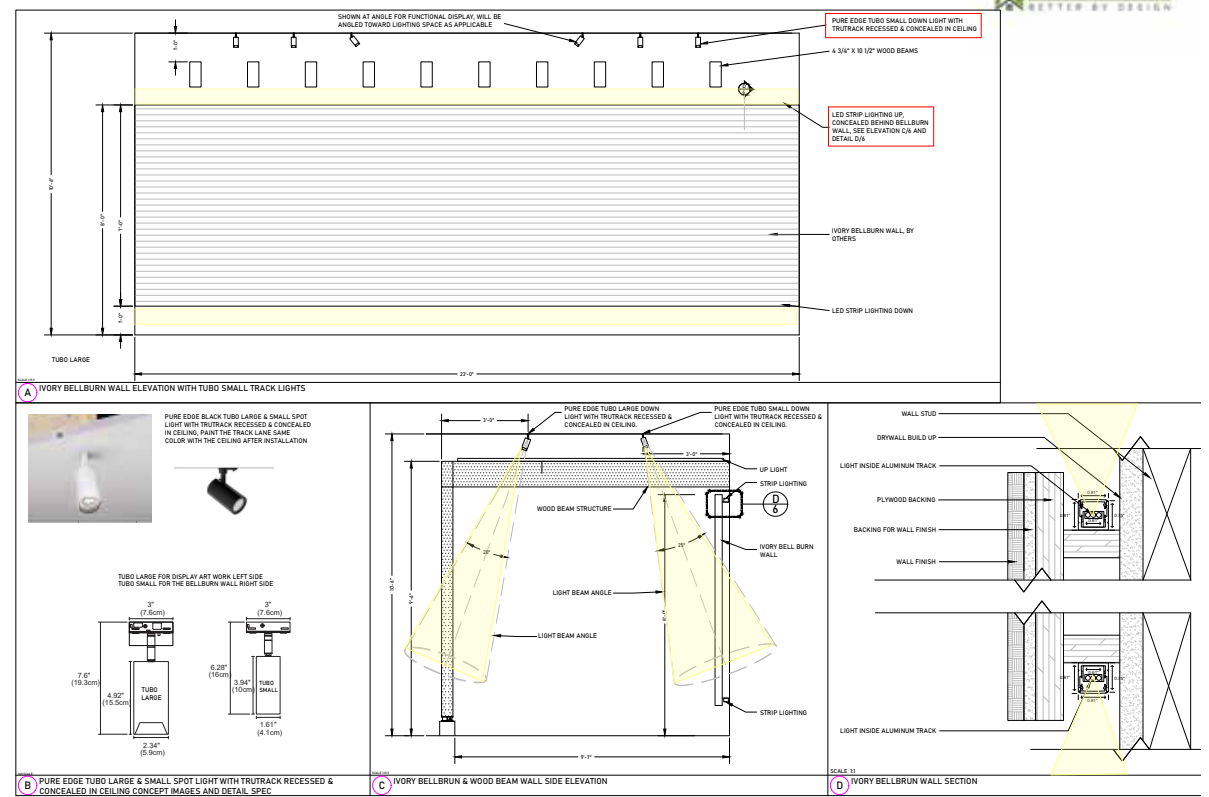
The Shawood Experience Center is a high-end showroom for Woodside Homes, designed to feel warm and luxurious with a unique lighting design. I used small, discreet fixtures, with downlights and spotlights seamlessly blended into the architecture and interior. A special pendant light adds rhythm to the main wall with its natural material, while indirect lighting on the wall creates a sophisticated mood.



SHAWOOD EXPERIENCE CENTER - CONCEPTUAL PLAN
ELEVATION 2 FOR TRACK LIGHT T1



SHAWOOD EXPERIENCE CENTER - CONCEPTUAL PLAN
SECTION & DETAIL FOR T2, L2



This wooden tunnel is a key feature designed for customers to experience the Shawood architectural elements, materials, and craftsmanship that contribute to exceptional homes. I used uplighting to highlight the ceiling and create a daylight effect, while small spotlights emphasize the graphics and signage. All recessed track lights are concealed in the ceiling, painted white to blend in and create the appearance of linear illumination.

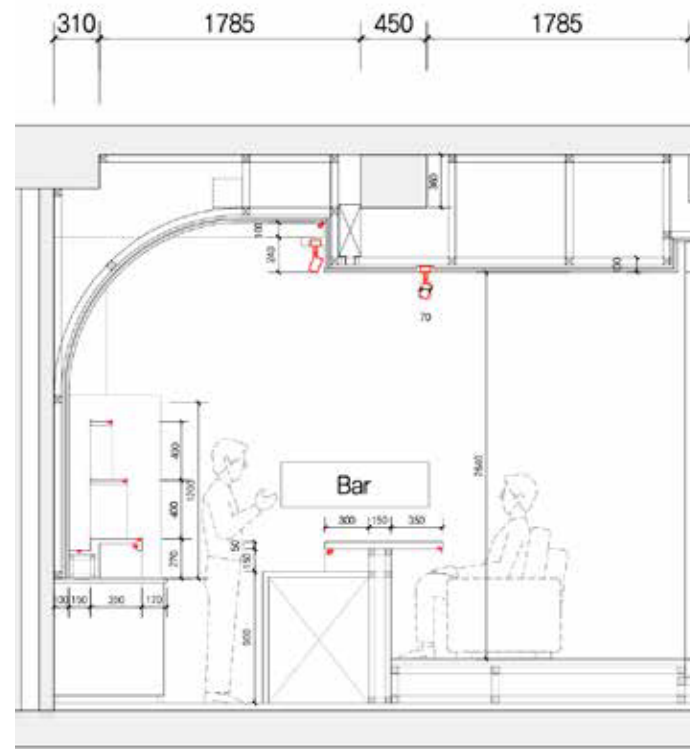


Bar Design

[Bar Moonriver]
YZA Architects

2020, Gangnam-gu, Seoul, Korea

The Moonriver bar, with its brick-clad arched walls, was designed to feel like a hidden, luxurious cave. LED uplight behind the liquor shelf, illuminates the back wall softly, and track spot lights aimed for whole displays in front of the liquor bottles.

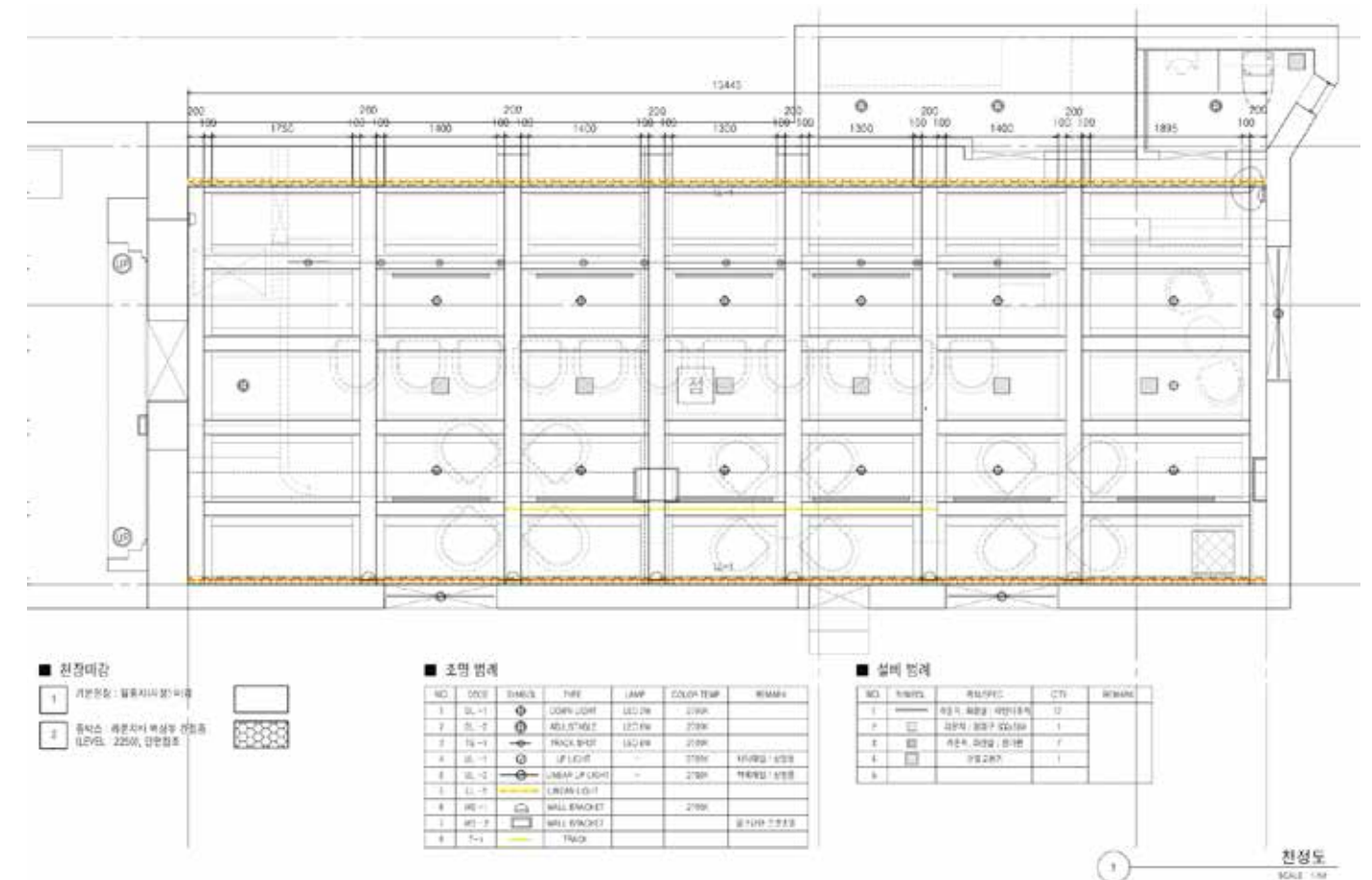
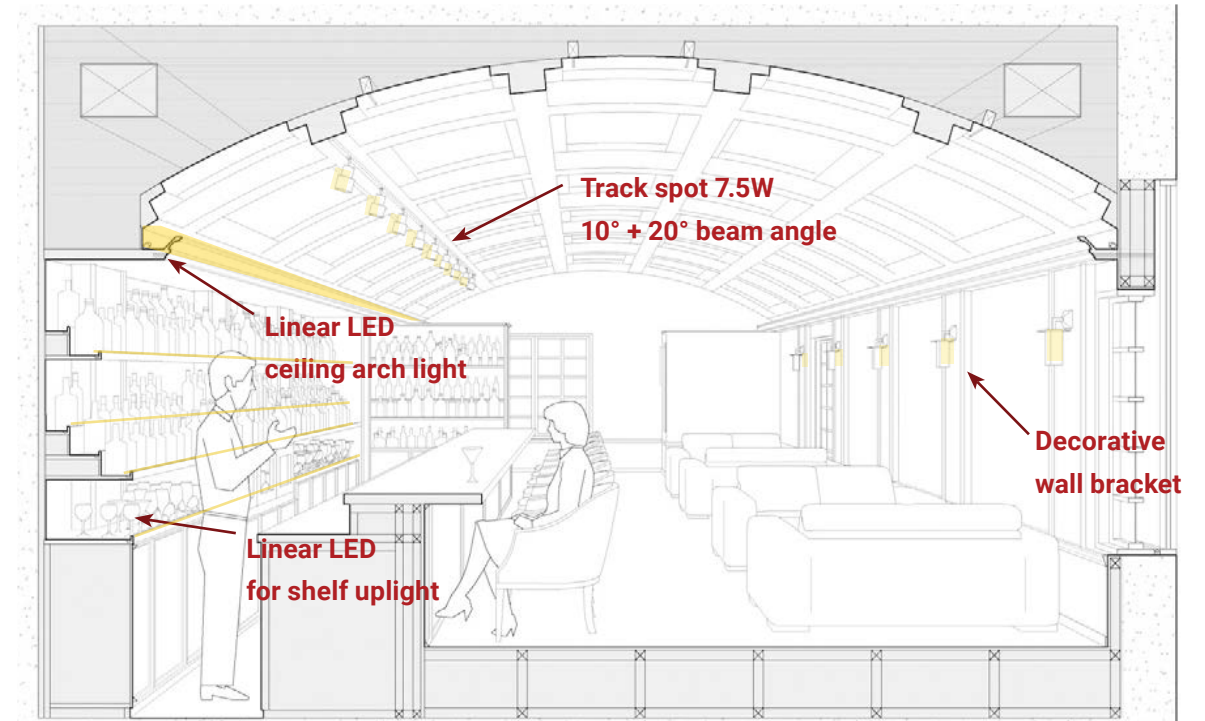


Bar Design

[Bar Musk]
YZA Architects

2017, Gangnam-gu, Seoul, Korea

This single malt bar was designed as a luxurious and private space for drinking and socializing. The client wanted it to feel like a long cave, so we highlighted the arched vaulted ceilings with indirect lighting for a warm, cozy feel. We hid most of the lights, except for a few decorative ones, to blend with the ceiling and create a mysterious, intimate atmosphere.

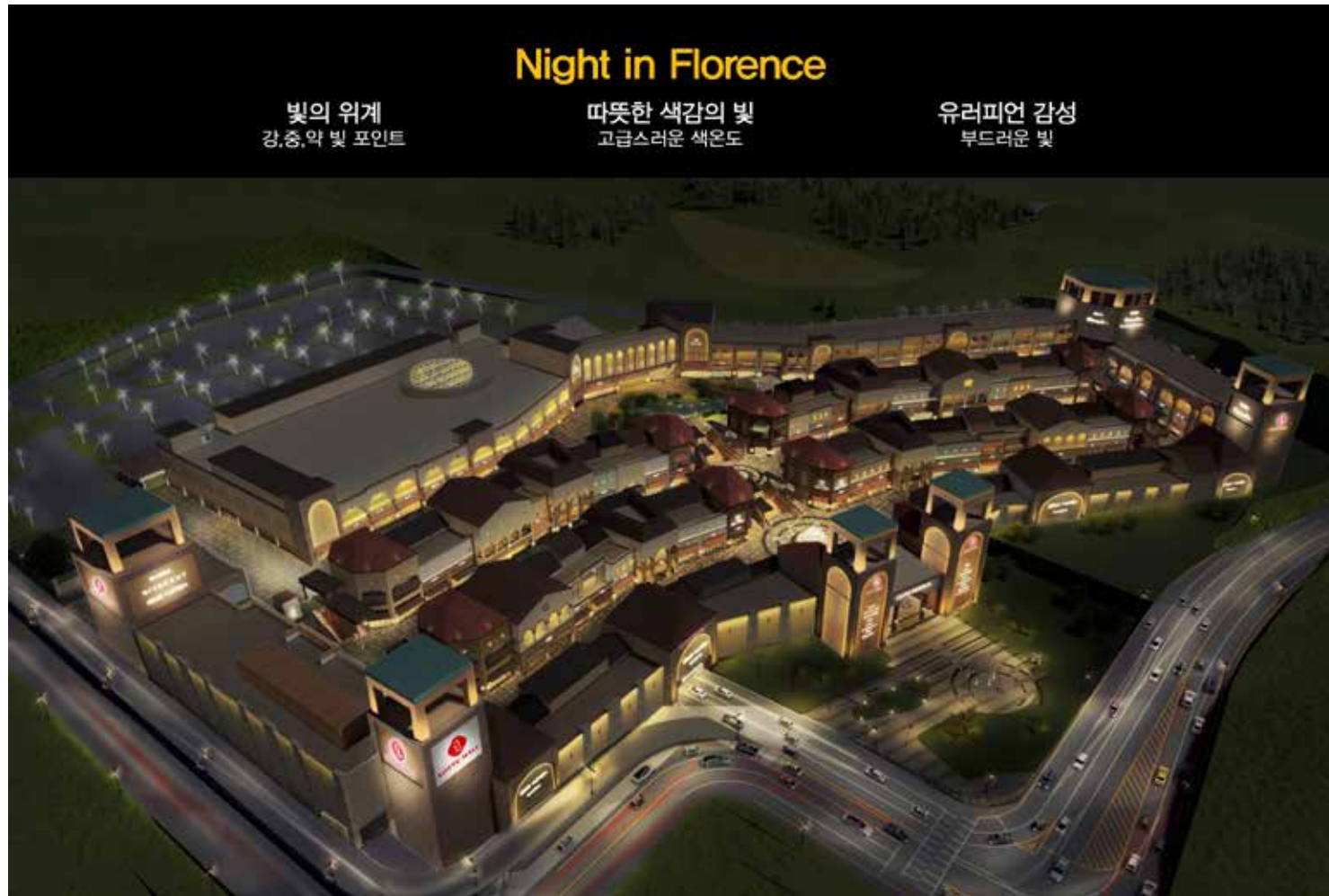


Commercial Design

**[Lotte Premium Outlet]
Yong-In branch**

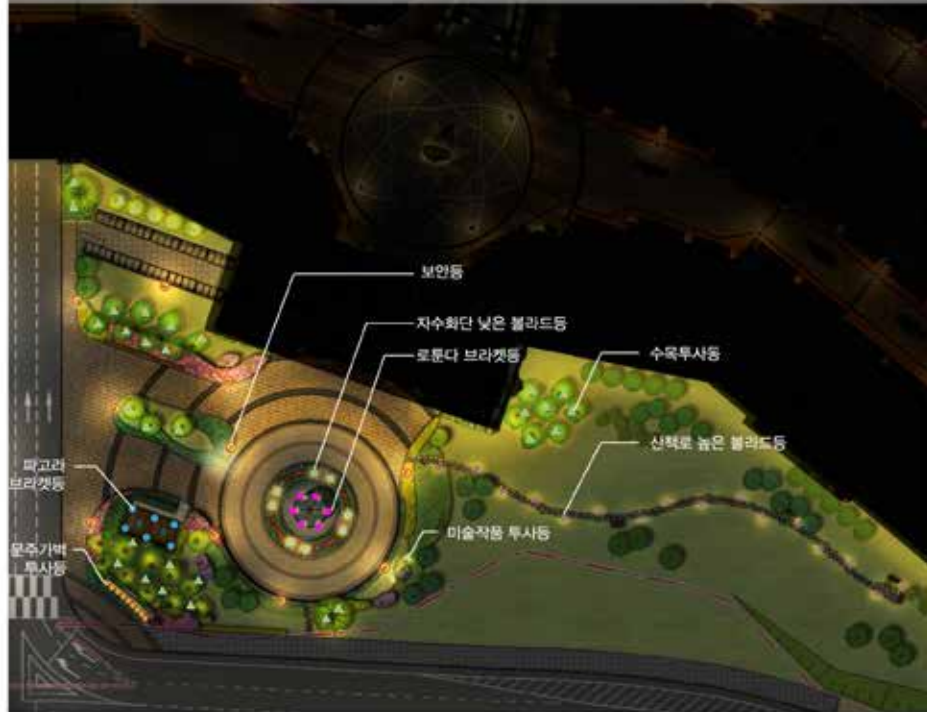
2018, Yong-In, Korea

The lighting concept was Night in Florence, which provides softly glowing night walk experience to people. We created a light hierarchy in three different light levels from the main entrance to the narrow street. Front facade lighting was focal point and all the fixtures were intergrated with the architecture structure.



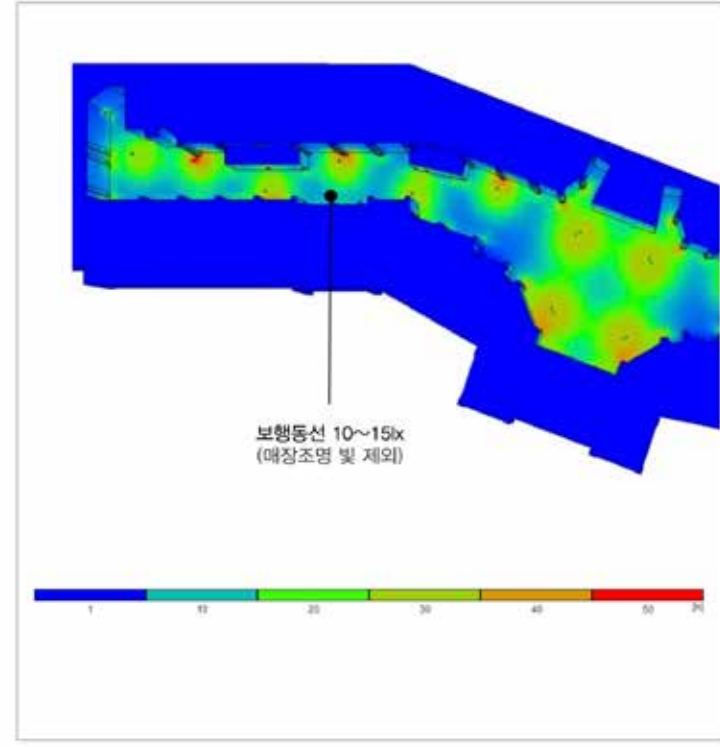
Wall Flood Light	Tower Crown Light	Edge Indirect Light	Bracket Light
<ul style="list-style-type: none"> - 타입: Flood Light - 램프: LED 60W, 100W - 색온도: 3000K - 빔각: 30°, 60°  	<ul style="list-style-type: none"> - 타입: Power LED-Bar - 램프: LED 14W/m - 색온도: 3000K - 빔각: 120°  	<ul style="list-style-type: none"> - 타입: Flexible LED-Bar - 램프: LED 12.3W/m - 색온도: 3000K - 빔각: 120°  	<ul style="list-style-type: none"> - 타입: Bracket Light Arm type - 램프: LED 10W - 색온도: 3000K  
Tower Up Light	Column Up Light	Wall Grazing Light	
<ul style="list-style-type: none"> - 타입: Power LED-Bar - 램프: LED 75W/1.5m - 색온도: 3000K - 빔각: 10°  	<ul style="list-style-type: none"> - 타입: In-Ground Light - 램프: LED 18W - 색온도: 3000K - 빔각: 6°  	<ul style="list-style-type: none"> - 타입: Power LED-Bar - 램프: LED 50W/m - 색온도: 3000K - 빔각: 10° x 60°  	

외부에서 가장 처음 마주하는 공간으로, 조경의 다양한 요소와 바다를 밝은 빛으로 연출하여 입구성 강조



- 보안등**
Type: Pole Light
Lamp: LED PCB 40W x 2ea
Color Temp: 3000K
Distance Apert: 20~25m
- 수목투사등**
Type: Tree Up Light
Lamp: LED 14W
Color Temp: 3000K
Beam Angle: 15° (S.A118)
30° (N.A119)
- 자수화단 낮은 플라드등**
신책로 높은 플라드등
Type: Low BidardL (420mm), High BidardL (900mm)
Lamp: LED RW
Color Temp: 3000K
- 로톤다 브라켓등**
Type: Bracket Light
Lamp: LED 10~15W
Color Temp: 3000K
- 파고라 브라켓등**
Type: Bracket Light
Lamp: LED 8W x 2ea
Color Temp: 3000K
Beam Angle: 15°
- 문주기벽 투사등**
Type: Flood Up Light
Lamp: LED 10W
Color Temp: 3000K
Beam Angle: 150°
(1/8 인치 후 빔과 회전)
- 미술작품 투사등**
Type: Flood Up Light
Lamp: LED 10W
Color Temp: 3000K
Beam Angle: 150°
(1/8 인치 후 빔과 회전)

당사 보행로 예상조도



경쟁사 보행로 예상조도



아울렛 내에서 가장 밝게 연출하는 공간으로 시각적으로 중심의 의미 강조



- 보안등**
Type: Pole Light
Lamp: LED PCB 40W x 2ea
Color Temp: 3000K
Distance Apert: 15~20m
- 미술장식품 투사등 (지중등)**
Type: In-ground Up Light
Lamp: LED 10W
Color Temp: 3000K
Beam Angle: 150°
(1/8 인치 후 빔과 회전)
- 스탠드등**
Type: Stand Light
Lamp: 12W
Color Temp: 3000K
Beam Angle: 90°(H)
- 낮은 플라드등**
Type: Low Bidard Light (L: 400mm)
Lamp: LED 8W
Color Temp: 3000K
- 스탠드 간접조명**
Type: Linear Light
Lamp: 12.24W
Color Temp: 3000K

가로

중심가로: 2 Head Type
Lamp: LED PCB 40W x 2ea
Color Temp: 3000K
Head: W43 x H89.5cm
Pole: 4m

가로: 1 Head Type
Lamp: LED PCB 40W
Color Temp: 3000K
Head: W43 x H89.5cm
Pole: 3m

Residential Design

[Cheongun Residence] **Tectonics Lab**

2017, Cheongun-dong, Seoul, Korea



The Cheongun Residence was a modern house designed for a retired professor. It had a central and symmetric layout with an arched structure that captured both modern and traditional elements. The emphasis was on the architecture itself, so we minimized the use of downlights and instead focused on indirect uplighting to harmonize with the structure.

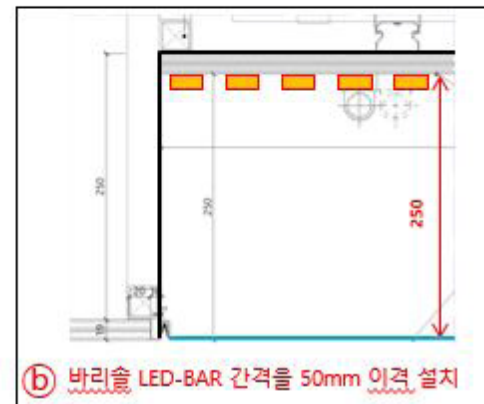
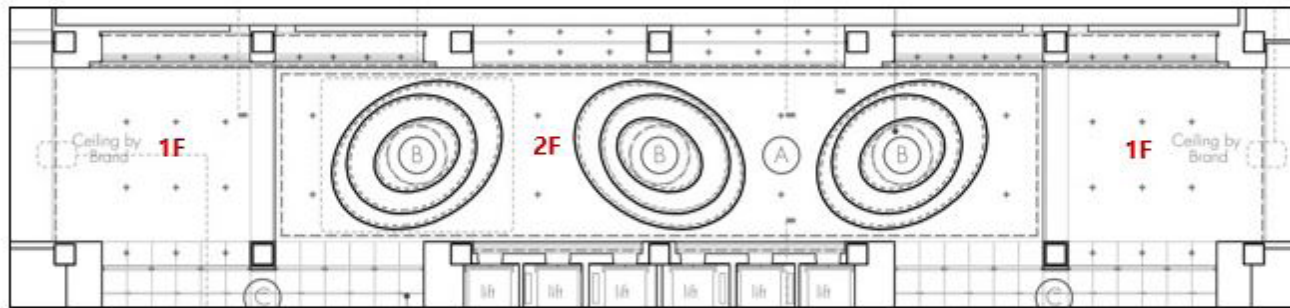
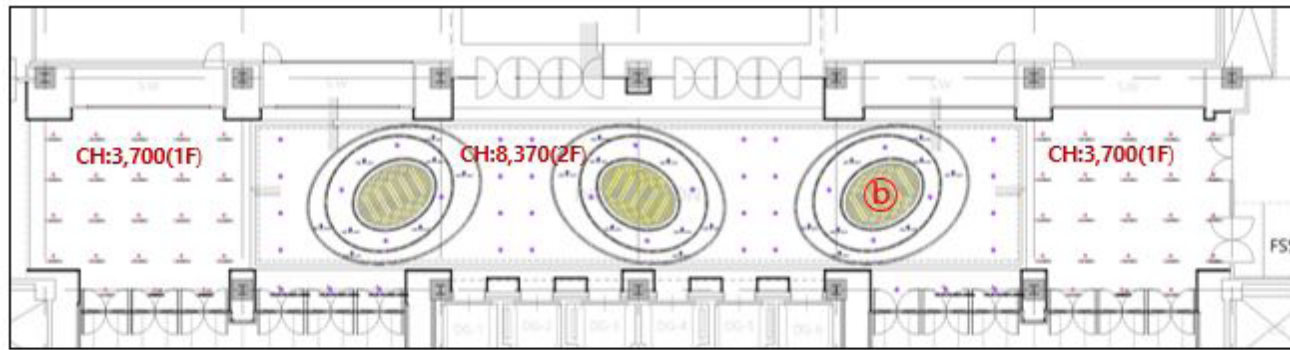


Retail Design

[Lotte Department Store] Seoul branch

2017, Seoul, Korea

This high ceiling wind break room, the main entrance of Lotte department store was remodeled with a new vivid atmosphere, sense of rhythm. The custom round fixtures gradually increased and repeated like water vibration and down lights looked like a star creating bright welcoming feeling to the customer.



1-2F			
구분	설계조도[lx]		실측조도[lx]
입구	방풍실2	1000	1200(1F) 1800(2F)



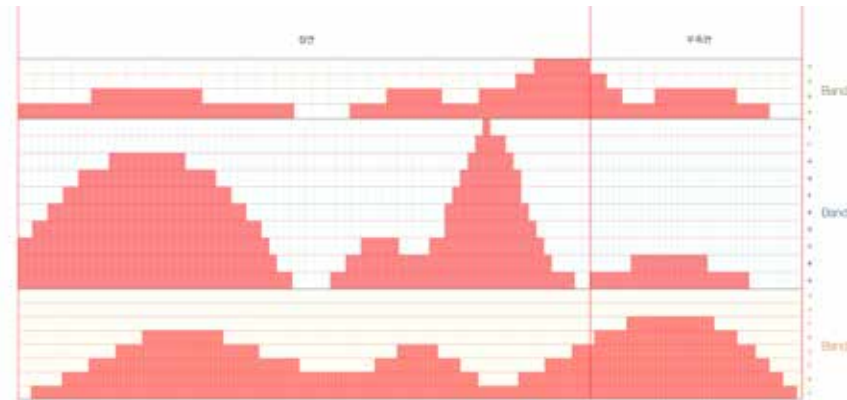
Facade Design

[SK Pavilion]
Yeosu Expo

2012, Yeosu, Korea

[Lotte Department Store]
Busan branch

2017, Busan, Korea



[제한 적용 일면 확대전거도]

구분	High Power LED X 30 LED
재료	소재 : Anodized Aluminum / PMMA - Stained PC
크기	1270 X 1100.0 X 114.7 mm
출력	30W
전압	300mA
전류	300mA
설치	벽부
비고	벽부 부착, 벽부 부착

구분	High Power LED X 30 LED
재료	소재 : Anodized Aluminum / PMMA - Stained PC
크기	1270 X 1100 X 110 mm
출력	30W
전압	DC 34V
전류	300mA
설치	벽부
비고	벽부 부착

구분	High Intensity LED per 84 module
재료	소재 : Anodized Aluminum / PMMA - Stained PC
크기	1200 X 1100 X 101 mm
출력	max. 300W
전압	DC 34V
전류	1000mA
설치	벽부
비고	벽부 부착

구분	LED Module X 84 Head
재료	소재
크기	1200 X 1100 X 100 mm
출력	max. 300W
전압	AC 220V
전류	Panel 147V
설치	Panel 147V
비고	

구분	POWER SUPPLY 150W
재료	소재
크기	1200 X 110 X 100 mm
출력	DC 34V 150W
전압	AC 100-240V
전류	Panel 147V
설치	Panel 147V
비고	

구분	POWER SUPPLY 300W
재료	소재
크기	1270 X 110 X 100 mm
출력	DC 34V 300W
전압	AC 100-240V
전류	Panel 147V
설치	Panel 147V
비고	

구분	DMX 8CH DRIVER
재료	소재
크기	1200 X 110 X 114 mm
출력	8x max per channel / DMX data output terminal / Stained
전압	DC 12-24V
전류	Panel 147V
설치	Panel 147V
비고	

구분	DMX Driver
재료	소재
크기	1200 X 110 X 117 mm
출력	DMX 8CH Standard
전압	DC 12-24V
전류	Panel 147V
설치	Panel 147V
비고	



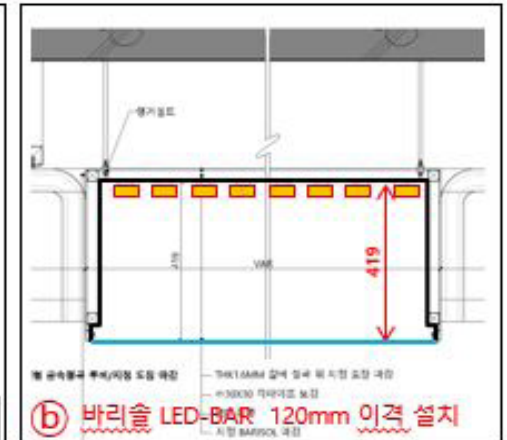
Retail Design

[Lotte Department Store] Daegu branch

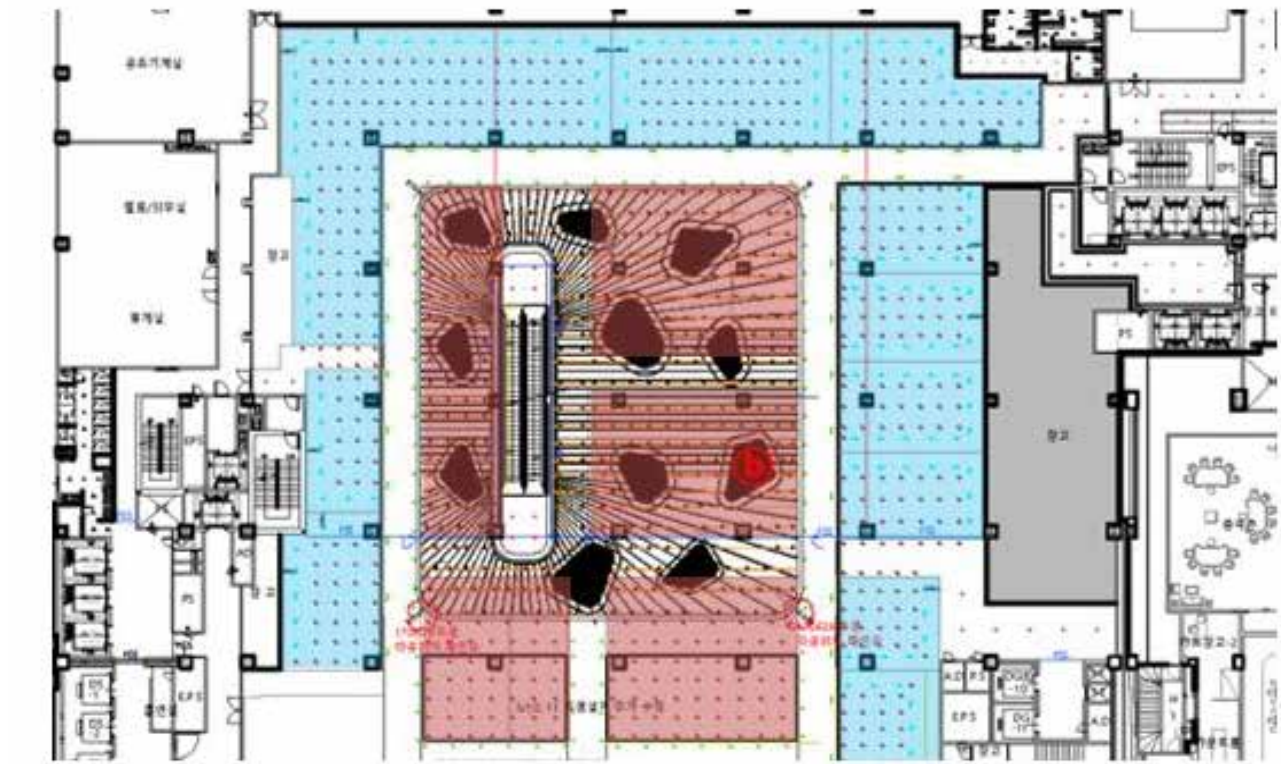
2016, Daegu, Korea

This is sports and mens floor of Lotte Department store remodeling project. The design concept keyword was dynamic energy. Linear track structure was designed to expend from the round shaped stretched ceiling light. It was well combination of diffused light and narrow spot VP light for the display products.

4F			
구분	설계조도[lx]		실측조도[lx]
동선	동선	400-500	415
	ELEV HALL		450
매장	매장	1100	1200
	매장 VP	2000	2400



WE INSTALLED LED LINEAR BARS INSIDE THE BARRISOL STRETCHED CEILING. SOFT DIFFUSED LIGHT SPREADS BASIC ILLUMINANCE TO THE STORE AND NARROW BEAM ANGLED TRACK SPOT LIGHT AIMED TOWARDS VISUAL POINT, MAIN DISPLAY TO HIGHLIGHT THE FOCAL POINT OF THE STORE.



Retail Design

[Hyundai Motors Showroom] Hyundai Motors

2011, Gangnam-gu, Korea

This showroom was basic reference of new Hyundai design manual. The ceiling was perforated aluminum with wavy shape module lighting. We designed ceramic media wall for luxury & dynamic mood and installed some spot lights for highlighting main car display.

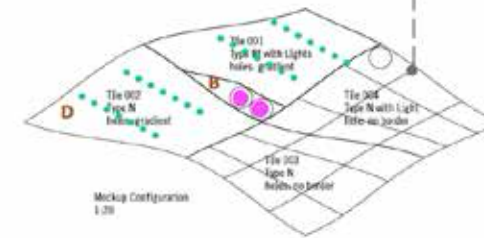
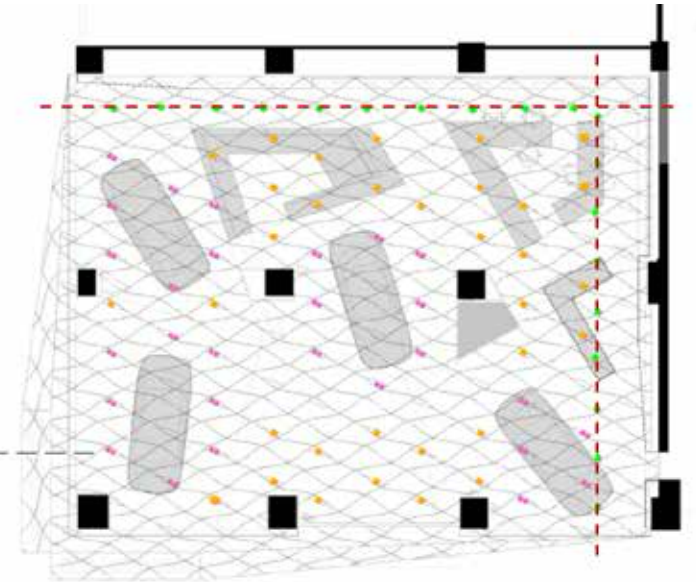


[SHOW ROOM LIGHTING PLAN]

Illuminance Level
IES Code: 500 lx
Korean Standard: 1000 lx

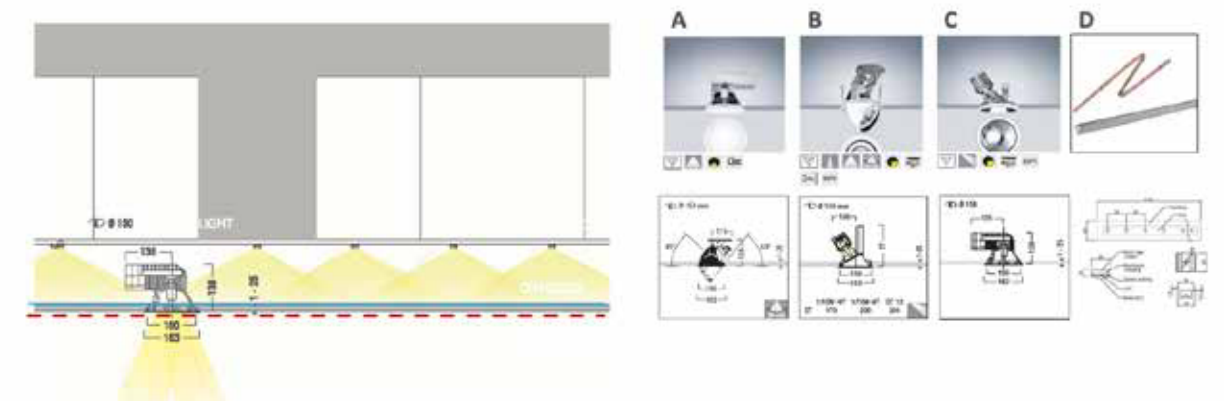
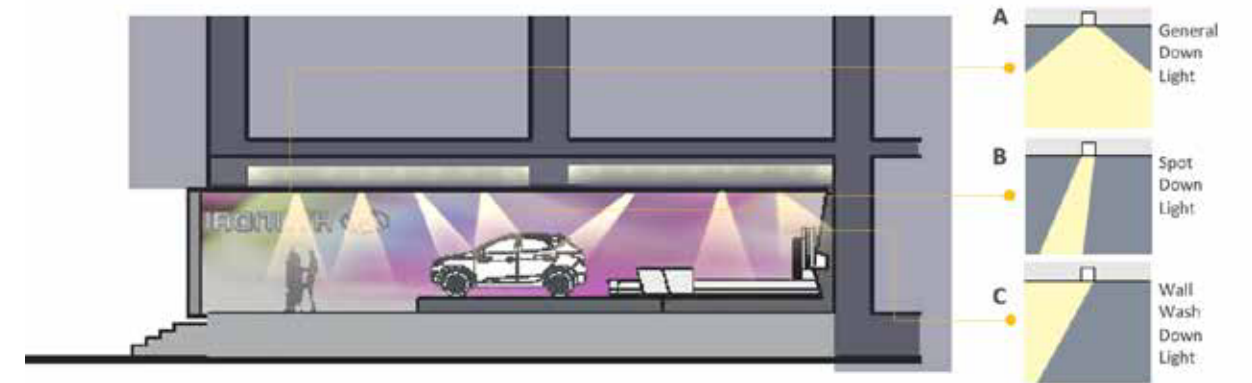
Lighting Application

- A- general down light**
-for standard ambient illumination
General D.L 35W MH or 32W LED
- B- adjustable spot down light**
-for accentuating leading car zone
Spot D.L (2)70W MH or 52W LED
- C- wall wash down light (dimmable)**
-for vertical illuminance on brand wall
increase our impression of brightness
Wall Wash D.L (2)26W CFL or 27W LED
- D- ceiling light (inside perforated panel)**
-linear LED 24W for ceiling illumination



A	●	General D.L 35W MH or 32W LED	207#
B	●	Spot D.L (2)70W MH or 52W LED	307#
C	●	Wall Wash (2)26W CFL/27W LED (dimmable)	357#
D	●	Linear LED 24W ceiling illumination	4707#

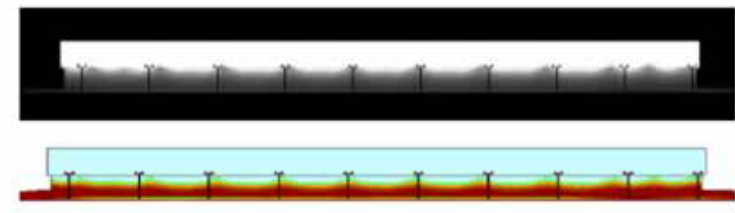
- * the amount of wattage & fixture are approximate number
- * current Hyundai 3store total wattage: 18KW, fixture number: 170
- * new layout for 1S need only approximately 9KW fixture number 90
- * but if we install LED ceiling illumination, we need extra 12KW





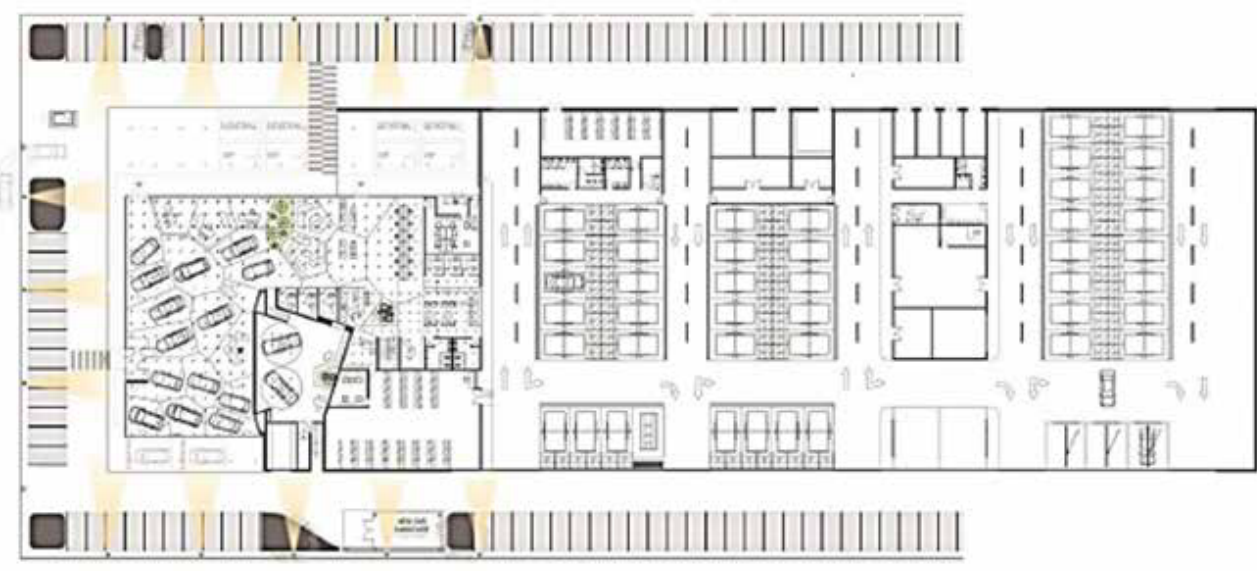
3D 휘도 시뮬레이션 Lighting Calculation

5m pole + 250W Metal Halide 투광등 (3000K) 12m-15m간격

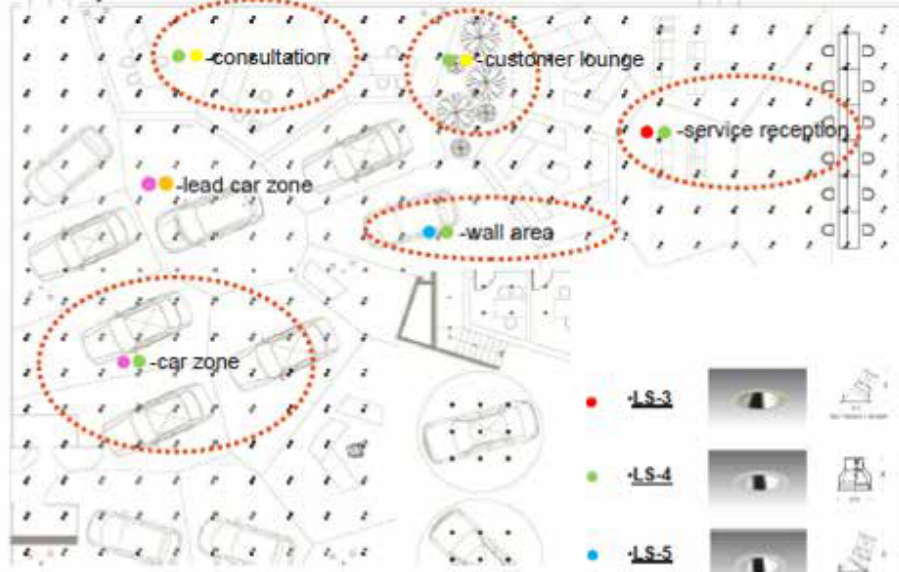


Lamp : HQT-DE 250W
Lamp holder : Fc2
Dimension : Ø420 x 513 mm

Illuminance		
Average Illuminance	83 lx	
Minimum Illuminance	33 lx	
Maximum Illuminance	160 lx	
Uniformity of	Even/Emax	1:2.40 (0.4)
Uniformity (2)	Even/Emax	1:5.05 (0.2)



5.4 실내 조명기구배치계획 (Interior Lighting Plan)



SHOW ROOM AREA

- lead car zone
- consultation
- customer lounge
- service reception
- wall area

- LS-1** 150W Metal Halide adjustable down light
- LS-2** 27W LED tunable general down light
- LS-3** 70W Metal Halide adjustable down light
- LS-4** 70W Metal Halide general down light
- LS-5** 70W Metal Halide wall washer light
- LS-6** 35W Metal Halide adjustable down light
- LS-7** 35W Metal Halide general down light