

The tape that covers the joint where the T-molding attaches to the roof is lifting. It is recommended that this be further evaluated by a qualified RV technician.



Slideout Roof

8.3.A Slideout - Sidewall - Condition

Acceptable

8.4.A Slideout - T-Molding Trim - Condition

Acceptable

8.5.A Seals, Sweeps and Gaskets - Condition

Acceptable

8.6.A Slideout - Override System - Accessible

Acceptable

8.7.A Slide Rail - Gear Rack System - Condition

Acceptable

8.8.A Wiring Harness Under Slideout

Acceptable

8.9.A 12-Volt DC Control and Switches

Acceptable

8.10.A Slideout Awning Topper - Operation

Acceptable

8.11.A Slideout Awning Topper - Frame & Latching Mechanism - Condition

Acceptable

8.12.A Slideout Awning Topper - Fabric

Fair

(1) There is a 2 inch tear on rear end of fabric next to the sidewall.



Slideout Awning Topper Fabric

(2) There is a 2 inch tear on front end of fabric next to the sidewall.



Slideout Front Fabric Tear



Slideout Rear Awning Topper

8(B) . Streetside Center Slideout

Styles & Materials

Slideout Roof - Type: EPDM Membrane	Slideout Drive System: Electric Motor / Gear and Rack System	Awning Topper - Length: 21 Feet
--	---	------------------------------------

Items

- 8.0.B Slideout - Operation
Acceptable
- 8.1.B Slideout - Alignment
Acceptable
- 8.2.B Slideout - Roof
Acceptable

The tape that covers the joint where the T-molding attaches to the roof is lifting. It is recommended that this be further evaluated by a qualified RV technician.



Slideout Roof

8.3.B Slideout - Sidewall - Condition

Acceptable

(2) The material underneath the slide ism ripped and coming out.



Slide Bottom

8.4.B Slideout - T-Molding Trim - Condition

Acceptable

The sealant along the streetside rear t-molding and the sidewall joint is peeling. This could allow water intrusion. It is recommended that this be further evaluated by a qualified RV Technician.



Curbside T-Molding Trim



Streetside Slideout T Mold

8.5.B Seals, Sweeps and Gaskets - Condition

Poor

The underneath gasket is torn and coming out. This could allow water intrusion. It is recommended that this be further evaluated by a qualified RV technician.



Underneath Gasket

8.6.B Slideout - Override System - Accessible

Acceptable

8.7.B Slide Rail - Gear Rack System - Condition

Acceptable

8.8.B Wiring Harness Under Slideout

Acceptable

8.9.B 12-Volt DC Control and Switches

Acceptable

8.10.B Slideout Awning Topper - Operation

Acceptable

8.11.B Slideout Awning Topper - Frame & Latching Mechanism - Condition

Acceptable

8.12.B Slideout Awning Topper - Fabric

Acceptable

9(A) . Curbside Front Wheel Assembly

NOTE: The National Transportation Safety Board (NTSB) and some tire manufacturers are recommending that all tires older than six (6) years should be replaced, regardless of their condition.

Styles & Materials

Tire - Brand:

Tire - Size:

Tire - DOT Date:

Sunflower RV Inspections

Doe

Other
Brand : Yokohoma

Other
Size : 255/70R22.5

Visually Verified

Tire - Load Capacity:
Single Tire Rating

Tire - Load Range:
H

Tire - Maximum Cold
Inflation Pressure:
120 PSI

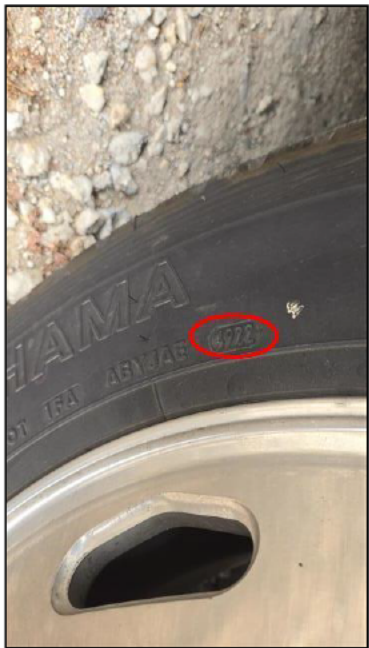
Tire - RV Manufacturer's
Recommended Inflation Pressure:
120 PSI
PSI : 111

Tire - Current Air
Pressure:
Reading from Tire Pressure
Monitoring System (TPMS)
PSI : 111

Items

9.0.A Tire - Age

Acceptable
DOT Date 4922 The tire pressure is 111 PSI. The RV manufacture recommended level is 120 PSI. It is recommended that this be further evaluated by a qualified tire specialist.



Curbside Front DOT Date

9.1.A Tire / Rim - Condition

Acceptable

9.2.A Tire - Tread - Condition

Acceptable

9.3.A Tire - Valve Extensions - Condition

Acceptable

9.4.A Tire Pressure Monitoring System - Condition

Acceptable

9(B) . Curbside Rear Outside Wheel Assembly / Drive Axle

Styles & Materials

Tire - Brand:

Tire - Size:

Tire - DOT Date:

Sunflower RV Inspections

Doe

Other
Brand : Yokohoma

Other
Size : 255/70R22.5

Visually Verified
DOT Date Code (WWYY) : 4722

Tire - Load Capacity:
Single Tire Rating
lbs or kgs : 10,500 lbs

Tire - Load Range:
H

**Tire - Maximum Cold
Inflation Pressure:**
120 PSI

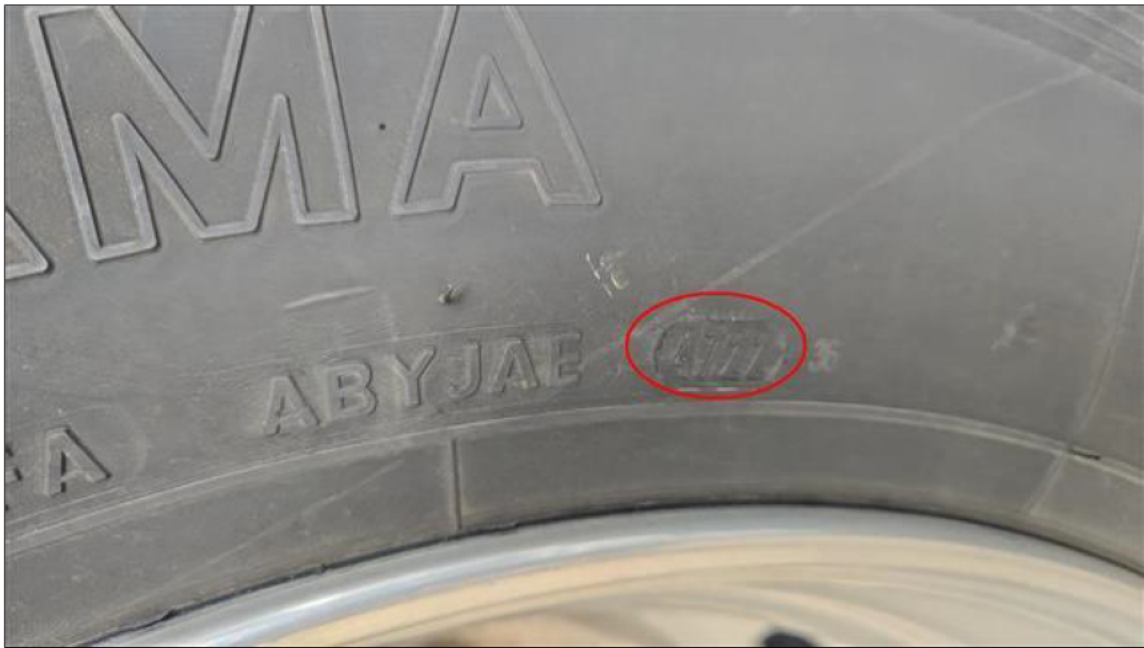
**Tire - RV Manufacturer's
Recommended Inflation Pressure:**
120 PSI

**Tire - Current Air
Pressure:**
Reading from Tire Pressure
Monitoring System (TPMS)
PSI : 108

Items

9.0.B Tire - Age

Acceptable
DOT Date 4722 The tire pressure is 108 PSI. The RV manufacture recommended level is 120 PSI. It is recommended that this be further evaluated by a qualified tire specialist.



Curbside Rear Outside DOT Date

9.1.B Tire / Rim - Condition

Acceptable

9.2.B Tire - Tread - Condition

Acceptable

9.3.B Tire - Valve Extensions - Condition

Acceptable

9.4.B Tire Pressure Monitoring System - Condition

Acceptable

9(C) . Curbside Rear Inside Wheel Assembly / Drive Axle

Styles & Materials

Tire - Brand:

Tire - Size:

Tire - DOT Date:

Sunflower RV Inspections

Doe

Other
Brand : Yokohama

Other
Size : 255/70R22.5

Visually Verified

Tire - Load Capacity:
Dual Tire Rating
lbs or kgs : 17,500 lbs

Tire - Load Range:
H

Tire - Maximum Cold Inflation Pressure:
120 PSI

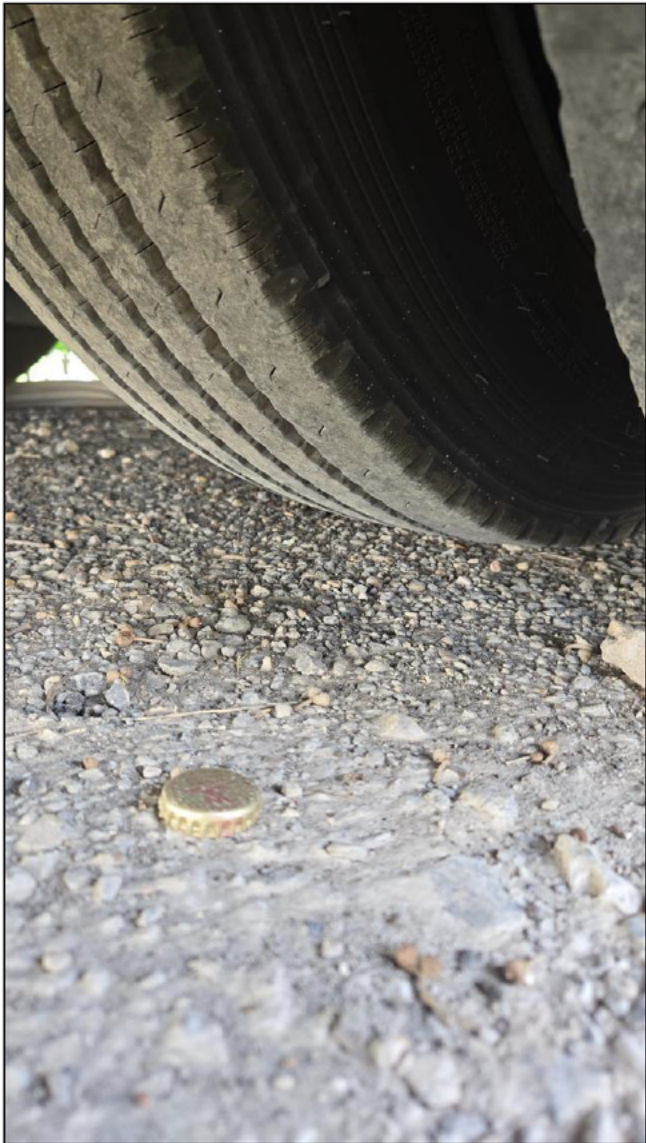
Tire - RV Manufacturer's Recommended Inflation Pressure:
120 PSI

Tire - Current Air Pressure:
Reading from Tire Pressure Monitoring System (TPMS)
PSI : 108

Items

9.0.C Tire - Age

Acceptable
The DOT Date Code was inaccessible during the inspection. It is recommended that the tire be evaluated by a tire specialist prior to driving the unit. The tire pressure is 105 PSI. The RV manufacture recommended level is 120 PSI. It is recommended that this be further evaluated by a qualified tire specialist.



Curbside Inside Wheel

9.1.C Tire / Rim - Condition

- Acceptable
- 9.2.C Tire - Tread - Condition
 - Acceptable
- 9.3.C Tire - Valve Extensions - Condition
 - Acceptable
- 9.4.C Tire Pressure Monitoring System - Condition
 - Acceptable

9(D) . Streetside Rear Wheel Outside Assembly / Drive Axle

Styles & Materials

Tire - Brand: Other Brand : Yokohama	Tire - Size: Other Size : 255/70R22.5	Tire - DOT Date: Visually Verified
Tire - Load Capacity: Dual Tire Rating lbs or kgs : 17000lbs	Tire - Load Range: H	Tire - Maximum Cold Inflation Pressure: 120 PSI
Tire - RV Manufacturer's Recommended Inflation Pressure: 120 PSI	Tire - Current Air Pressure: Reading from Tire Pressure Monitoring System (TPMS) PSI : 108	

Items

- 9.0.D Tire - Age
 - Acceptable
 - DOT Date 4722 The tire pressure is 107 PSI. The RV manufacture recommended level is 120 PSI. It is recommended that this be further evaluated by a qualified tire specialist.



Streetside Rear Outside DOT Date

- 9.1.D Tire / Rim - Condition

- Acceptable
- 9.2.D Tire - Tread - Condition
- Acceptable
- 9.3.D Tire - Valve Extensions - Condition
- Acceptable
- 9.4.D Tire Pressure Monitoring System - Condition
- Acceptable

9(E) . Streetside Rear Wheel Inside Wheel Assembly / Drive Axle

Styles & Materials		
Tire - Brand: Other Brand : Yokohama	Tire - Size: Other Size : 255/70R22.5	Tire - DOT Date: Visually Verified
Tire - Load Capacity: Dual Tire Rating lbs or kgs : 17,000	Tire - Load Range: H	Tire - Maximum Cold Inflation Pressure: 120 PSI
Tire - RV Manufacturer's Recommended Inflation Pressure: 120 PSI	Tire - Current Air Pressure: Reading from Tire Pressure Monitoring System (TPMS)	

Items

- 9.0.E Tire - Age
- Acceptable

The DOT Date Code was inaccessible during the inspection. It is recommended that the tire be evaluated by a tire specialist prior to driving the unit. The tire pressure is 107 PSI. The RV manufacture recommended level is 120 PSI. It is recommended that this be further evaluated by a qualified tire specialist.



Curbside Inside Wheel

9.1.E Tire / Rim - Condition

Acceptable

9.2.E Tire - Tread - Condition

Acceptable

9.3.E Tire - Valve Extensions - Condition

Acceptable

9.4.E Tire Pressure Monitoring System - Condition

Acceptable

9(F) . Streetside Front Wheel Assembly

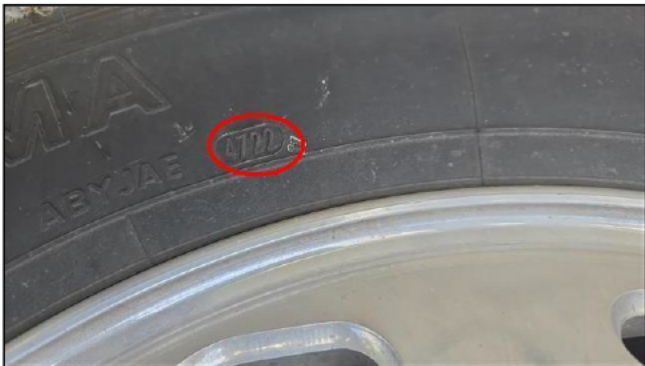
Styles & Materials

Tire - Brand: Other Brand : Yokohama	Tire - Size: Other Size : 255/70R22.5	Tire - DOT Date: Visually Verified DOT Date Code (WWYY) : 4722
Tire - Load Capacity: Single Tire Rating lbs or kgs : 10,000	Tire - Load Range: H	Tire - Maximum Cold Inflation Pressure: 120 PSI
Tire - RV Manufacturer's Recommended Inflation Pressure: 120 PSI	Tire - Current Air Pressure: Reading from Tire Pressure Monitoring System (TPMS) PSI : 107	

Items

9.0.F Tire - Age

Acceptable
DOT Date 4722 The tire pressure is 108 PSI. The RV manufacture recommended level is 120 PSI. It is recommended that this be further evaluated by a qualified tire specialist.



Streetside Front DOT Date

9.1.F Tire / Rim - Condition

Acceptable

9.2.F Tire - Tread - Condition

Acceptable

9.3.F Tire - Valve Extensions - Condition

Acceptable

9.4.F Tire Pressure Monitoring System - Condition

Acceptable

9(G) . Spare Tire Wheel Assembly

Items

10. Leveling System and Components

Styles & Materials

Leveling System - Type:
Air

Leveling System - Manufacturer:
Lippert

Items**10.0 Leveling System - Condition**

Acceptable

10.1 Leveling System - Visible Signs of Damage

No

10.2 Leveling System - Jacks Extend and Fully Retract

Yes

10.3 Leveling System - Leaks or Mechanical Issues

No

11. Exterior Chassis and Undercarriage

The inspector will evaluate for signs of rust but will not make a determination of the severity of the rust. Pictures may be included to show what the inspector observed at the time of the inspection.

Note: Due to insurance restrictions, the motor home can NOT be driven by the inspector. Also, due to the lack of clearance under the motor home and safety concerns, the inspector will conduct the following visual inspections from the outer perimeter of the motor home.

Styles & Materials

Axles - Quantity:
Two

Front Axle Weight Rating:
From Data Plate
lbs or kgs : 10,500 lbs

Drive Axle Weight Rating:
From Data Plate
lbs or kgs : 17,500 lbs

Hitch Receiver - Brand:
Freightliner Custom Chassis

Hitch Receiver - Weight Rating:
Class 4 (up to 12000 lbs GTW)

Hitch Receiver - Modifications:
No

Hitch Connector - Pin Type:
7-Pin

Underbelly - Type:
Enclosed

Items**11.0 Chassis and Frame - Condition**

Acceptable

11.1 Chassis and Frame - Visible Signs of Rust

No

11.2 Chassis and Frame - Bent or Damaged Components

No

11.3 Chassis and Frame - Excessive Wear

Not Inspected

11.4 Chassis and Frame - Signs of Tire Failure Damage

No

11.5 Running Gear - Scrape or Drag Damage

Not Inspected

- 11.6 Running Gear - Hydraulic Hose Leaks
No
- 11.7 Steering Components - Condition
Acceptable
- 11.8 Oil Leaks / Excessive Oil
No
- 11.9 Hitch Receiver - Condition
Acceptable
- 11.10 Hitch Connector (4-Pin or 7-Pin) - Condition
Acceptable
- 11.11 Underbelly - Condition
Acceptable

12. Engine, Radiator and Transmission

Note: Due to insurance restrictions, the motor home can NOT be driven by the inspector. Also, due to the lack of clearance under the motor home, and safety concerns, the inspector will conduct the following visual inspections from the outer perimeter of the motor home.

Styles & Materials		
Engine - Brand: Cummins	Engine - Model / HP: B6.7	Engine - Location / Type: Rear Diesel
Engine - Starts and Runs: Yes	Last Oil Change Recorded: No / Unknown	Last Oil Filter Change Recorded: No / Unknown
Last Fuel Filter Change Recorded: No / Unknown	Radiator - Location: Rear	Cooling Fan(s) - Accessible: Yes
Cooling Fan(s) - Type: Belt Driven	Transmission - Brand: Allison	Brake - Type: Air
Items		

- 12.0 Engine - Running Condition
Acceptable
- 12.1 Engine Compartment - Cleanliness
Acceptable
- 12.2 Oil - Level on Dipstick
Acceptable
- 12.3 Oil - Analysis Performed
Not Present
- 12.4 Radiator - Condition
Acceptable
- 12.5 Radiator - Hoses - Condition
Acceptable
- 12.6 Coolant - Reservoir - Condition
Acceptable
- 12.7 Coolant - Level

- Acceptable
- 12.8 Coolant - Analysis Performed
- Not Present
- 12.9 Cooling Fan(s) - Operation
- Acceptable
- 12.10 Transmission Fluid - Leaks
- Acceptable
- 12.11 Transmission Fluid - Level on Dipstick
- Acceptable
- 12.12 Transmission Fluid - Discolored / Contaminated
- No
- 12.13 Transmission Fluid - Analysis Performed
- Not Present
- 12.14 Exhaust System - Exhaust Pipe / Catalytic Converter / Muffler / Brackets in Place
- Acceptable
- 12.15 Exhaust - Leaks
- Not Inspected
- 12.16 Windshield Washer Fluid - Level
- Acceptable

13. 12-Volt DC Chassis Lights

Styles & Materials

Light Bulbs for Chassis Lights - Type:
LED

- Items
- 13.0 Clearance Lights - Front
- Acceptable
- 13.1 Clearance Light - Rear
- Acceptable
- 13.2 Marker Lights - Streetside
- Acceptable
- 13.3 Marker Lights - Curbside
- Acceptable
- 13.4 Turn and Brake Lights - Left
- Acceptable
- 13.5 Turn and Brake Lights - Right
- Acceptable
- 13.6 Tail Lights
- Acceptable
- 13.7 Headlights - Low Beam

Acceptable

13.9 Fog Lights

Acceptable

13.10 Backup Lights

Acceptable

13.11 Flood Lights

Acceptable

13.12 Utility Lights

Acceptable

13.13 Hitch Lights

Acceptable

13.14 Porch Lights

Acceptable

13.15 Security Lights

Acceptable

14. Driver / Cab Area

Styles & Materials

Engine - Mileage:

Miles
Current Mileage : 21,334

Oil Pressure Reading:

Normal

Fuel - Level:

1/4

Seat Operation - Type:

Electric

Window Blinds / Curtain - Type:

Electric

Inside Step Cover - Type:

Electric

Mirrors - Type:

Electric

Dash Radio - Brand:

Jensen

Dash Air Conditioner - Temperature:

Degrees F
Degrees : 59

Dash Heater -

Temperature:

Degrees F
Degrees : 89

Items

14.0 Driver Seat - Condition

Fair

There is wear on the driver's seat.



Driver Seat

14.1 Driver Seat - Operation

Acceptable

14.2 Passenger Seat - Condition

Fair

There is wear on the passenger seat.



Passenger Seat

14.3 Passenger Seat - Operation

Acceptable

14.4 Seatbelts - Condition and Operation

Acceptable

14.5 Windshield Blinds / Curtains - Condition

Acceptable

14.6 Windshield Blinds / Curtains - Operation

Acceptable

14.7 Sunvisor - Condition and Operation

Acceptable

14.8 Windshield Wipers - Condition and Operation

Acceptable

14.9 Steering Wheel - Tilt - Operation

Acceptable

14.10 Steering Wheel - Telescoping - Operation

No

14.11 Dashboard - Condition

Acceptable

14.12 Dashboard - Knobs - Condition and Operation

Acceptable

14.13 Interior Step Cover - Condition

Acceptable

14.14 Interior Step Cover - Operation

Acceptable

14.15 Fan(s) - Condition and Operation

Acceptable

14.16 Horns - Operation

Acceptable

14.17 Mirrors - Condition and Operation

Acceptable

14.18 Camera - Rear View - Operation

Acceptable

14.19 Camera - Curbside View - Operation

Acceptable

14.20 Camera - Streetside View - Operation

Acceptable

14.21 Dash Radio - Condition and Operation

No

14.22 12-Volt DC Power Outlet(s) - Condition and Operation

Acceptable

14.23 USB Power Outlet(s) - Condition and Operation

Acceptable

14.24 Tire Pressure Monitor - Condition and Operation

Acceptable

15. Electrical System 120-Volt AC and 12-Volt DC

Styles & Materials

Power Source:

50 Amp / 120/240 Volts AC

Power Converter - AC

Power On:

Operational Test

Power Converter - AC Power Off:

Operational Test

Generator - Brand:

Onan

Generator - Model

Number:

From Manufacturer's Label
Model Number

Generator - Serial Number:

From Manufacturer's Label
Serial Number : L16029089

Generator - Hours of Operation:

From Generator Meter
Hours : 317

Generator - Tested

Under Load:

By Running Two Air
Conditioners

Generator - Voltage Output:

Under Minimum 50% Load

Generator - Frequency Output:

Under Minimum 50% Load

Inverter - Brand:

Magnum

Inverter - Model:

From Manufacturer's Label

Inverter - Serial Number:

Inverter - Voltage

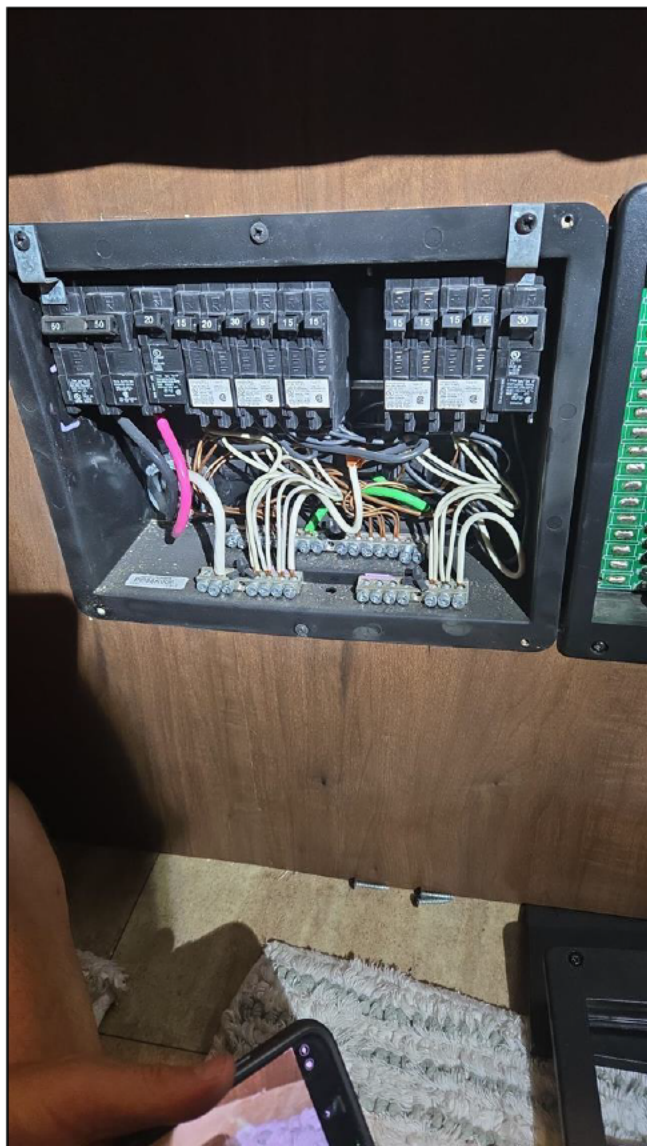
Inverter - Frequency Output:

From Manufacturer's Label	Output: Under 50% load AC Voltage : 123	Under 50% Load Hertz : 60
12-Volt DC House Battery(s) - Disconnect Switch Present: Yes	12-Volt DC House Battery(s) - Location: Storage Bay	12-Volt DC Chassis Battery(s) - Disconnect Switch Present: Yes
12-Volt DC Chassis Battery(s) - Location: Storage Bay		

Items

- 15.0 Power Cord - Condition
Acceptable
- 15.1 Electrical Panel Box - Condition
Acceptable
- 15.2 Electrical Panel Box - Wiring Secure
Acceptable
- 15.3 Electrical Panel Box - All Black, White and Ground Wires Kept Separate
Poor

The neutral wires are 2 to a slot on the bus. Each individual wire belongs in a slot by itself.



Electric Panel Box

15.4 Electrical Panel Box - Signs of Service or Repair

No

15.5 Electrical Panel Box - Circuit Breakers in Place

Acceptable

15.6 Electrical Panel Box - Wiring with Signs of Discoloration from Heat

No

15.7 12-Volt DC Fuse Panel - Condition

Acceptable

15.8 12-Volt DC Fuse Panel - Wires and Terminals Tight

Yes

15.9 12-Volt DC Fuse Panel - Fuse Connections - Condition

Acceptable

15.10 12-Volt DC Fuses - Condition

Acceptable

15.11 Power Converter - AC Power On

Acceptable

15.12 Power Converter - AC Power Off

Acceptable

15.13 Power Converter - Operation - 0.5 V Drop

Yes

15.14 Polarity / Voltage Test - Exterior Receptacles

Acceptable

15.15 Polarity / Voltage Test - Storage Bay Receptacles

Not Present

15.16 Polarity / Voltage Test - Bedroom Receptacles

Acceptable

15.17 Polarity / Voltage Test - Receptacle Behind Refrigerator

Not Inspected

Backside of refrigerator is inaccessible.

15.18 Polarity / Voltage Test - Kitchen Receptacles

Acceptable

15.19 Polarity / Voltage Test - Living Room Receptacles

Acceptable

15.20 Polarity / Voltage Test - Dining Area Receptacles

Acceptable

15.21 Polarity / Voltage Test - Bath and Toilet Area Receptacles

Acceptable

15.22 Polarity / Voltage Test - Receptacles Behind all Electronics and Appliances

Not Inspected

Behind appliances are inaccessible.

15.23 GFCI Trip Testing - Bathroom Receptacles

Acceptable

15.24 GFCI Trip Testing - Kitchen Receptacles

Acceptable

15.25 GFCI Trip Testing - Bedroom Receptacles

Acceptable

15.26 GFCI Trip Testing - Storage Bay Receptacles

Not Present

15.27 GFCI Trip Testing - Exterior Receptacles

Acceptable

15.28 GFCI Trip Testing - All Receptacles Behind Electronics and Appliances

Not Inspected

Receptacles behind appliances are inaccessible.

15.29 GFCI Trip Testing - Circuit Breaker(s) in Electrical Panel Box

Acceptable

15.30 Generator - Fuel Level Greater than 1/4 Tank

Acceptable

15.31 Generator - Oil Level

Acceptable

15.32 Generator - Radiator - Condition

Acceptable

15.33 Generator - Radiator Reservoir and Hoses - Condition

Acceptable

15.34 Generator - Starts and Runs

Acceptable

15.35 Generator - Transfer Switch - Operation

Acceptable

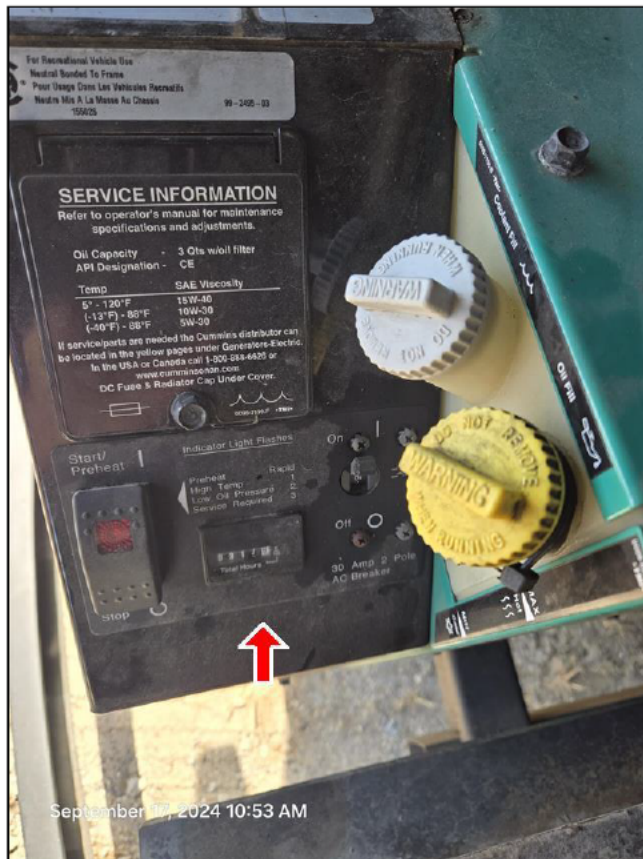
15.36 Generator - Tested Under Load

Acceptable

15.37 Generator - Operation

Acceptable

The generator hours reading is 317



Generator Hour Meter

15.38 Generator - Exhaust

Acceptable

15.39 Generator - Oil Analysis Performed

Not Present

15.40 Generator - Coolant Analysis Performed

Not Present

15.41 Inverter - Condition

Acceptable

15.42 Inverter - Cables, Wiring and Fuses - Condition

Acceptable

15.43 12-Volt DC House Battery(s) - Condition

Acceptable

15.44 12-Volt DC House Battery(s) - Operational

Yes

15.45 12-Volt DC House Battery(s) - Box(es) - Condition

Acceptable

15.46 12-Volt DC House Battery(s) - Box(es) - Vented and Secured

Yes

15.47 12-Volt DC House Battery(s) - Cables and Terminals - Condition

Acceptable

15.48 12-Volt DC House Battery(s) - Matched for Size and Age

Yes

15.49 12-Volt DC House Battery(s) - Positive and Negative Cables Matched for Load

Yes

15.50 12-Volt DC House Battery(s) - Have They Been Maintained

Acceptable

15.51 12-Volt DC Chassis Battery(s) - Condition

Acceptable

15.52 12-Volt DC Chassis Battery(s) - Operation

Acceptable

15.53 12-Volt DC Chassis Battery(s) - Box(es) - Condition

Acceptable

15.54 12-Volt DC Chassis Battery(s) - Cables and Terminals - Condition

Acceptable

15.55 12-Volt DC Chassis Battery(s) - Matched for Size and Age

Yes

15.56 Cable and Satellite TV Hookup - Visually Acceptable

Acceptable

15.57 12-Volt DC Power Outlet(s) - Condition and Operation

Acceptable

15.58 USB Power Outlet(s) - Condition and Operation

Acceptable



16. Water Systems

NOTE: Due to the inability to determine the age and quality of the water in the fresh water tank, the tank should be drained and sanitized before refilling for use.

NOTE: Due to the types of materials and waste used in the tanks and depending on previous maintenance, fresh and waste monitor sensor probes may perform inaccurately between applications due to build up.

NOTE: The onboard in-line water filter will be visually inspected but the canister assembly will not be removed to verify the presence of a filter or to determine its condition at the time of the inspection.

Styles & Materials		
Black Water Tank #1 - Valve Type: Manual Pull T-Handle	Black Water Tank #1 - Flush - Present and Labeled: No	Black Water Tank #2 - Flush - Present and Labeled: No
Gray Water Tank #1 - Valve Type: Manual Pull T-Handle	Gray Water Tank #1 - Flush - Present and Labeled: No	Battery Monitor - Reading: Full
Fresh Water Tank - Reading: 1/2	Black Water Tank #1 - Reading: 1/2	Gray Water Tank #1 - Reading: Full

Items

16.0 City Water - Connection - Condition

Acceptable

16.1 City Water - System Holds Pressure

Acceptable

16.2 City Water - Pressure Regulator Available

Acceptable

16.3 City Water - Drinking Water Safe Hose Available for Test

Acceptable

16.4 Outside Shower - Condition and Operation

Acceptable

16.5 On-Board Water Filtration System

Yes

16.6 On-Board Water System - Tank, Water Pump and Fixtures for Tank Fill - Condition

Yes

16.7 On-Board Water System - Tested Fresh Water Fill

Yes

16.8 On-Board Water System - Operation

Acceptable

16.9 On-Board Water System - Pump - Creates and Holds Pressure

Acceptable

16.10 In-Line Check Valve - Operation

Acceptable

16.11 Waste Water - Sewer / Hose Fittings

Acceptable

16.12 Black Water Tank #1 - Condition

Acceptable

16.13 Black Water Tank #1 - Valve - Condition and Operation

Acceptable

16.14 Black Water Tank #1 - Tank, Valve or Line Leaks

Acceptable

16.15 Black Water Tank #1 - Drain Cap - Condition

Acceptable

16.16 Black Water Tank #1 - Drain Cap - In Place

Acceptable

16.17 Black Water Tank #1 - Drain Cap - Holds Back Water

Acceptable

16.18 Gray Water Tank #1 - Condition

Acceptable

16.19 Gray Water Tank #1 - Valve - Condition and Operation

Acceptable

16.20 Gray Water Tank #1 - Tank, Valve or Line Leaks

Acceptable

16.21 Gray Water Tank #1 - Drain Cap - Condition

Acceptable

16.22 Gray Water Tank #1 - Drain Cap - In Place

Acceptable

16.23 Gray Water Tank #1 - Drain Cap - Holds Back Water

Acceptable

16.24 Battery / Waste / Water Monitor Panel - Condition

Acceptable

17. LP (Propane) System Leak Test**Styles & Materials****LP System - Leak Test - Start Time:**PM
Time : 2:51**LP System - Leak Test - End Time:**PM
Time : 2:57**LP System - Leak Test - Did Pressure Drop During Test:**

No

Items**17.0 LP System - Leak Test**

Acceptable

18. Propane Containers, Lines and Connection

NOTE: Liquid Propane gas detectors have an estimated service life of five years after which time it is recommended they be replaced.

NOTE: Smoke Detectors have an estimated service life of ten years after which time it is recommended they be replaced.

NOTE: Carbon Monoxide detectors have an estimated service life of five years after which time it is recommended they be replaced.

Styles & Materials**ASME Tank - Mounting Location:**

Mounted Outside Frame Rails

ASME Tank - Size:

43.5 Gallons

ASME Tank - Date of Manufacture:

2016

Combination LP/CO Detector - Brand:

Atwood

Combination LP/CO Detector - Date:

Unknown (Replacement Recommended)

Combination LP/CO Detector - Test Method:

Tested By Pushing Button

Combination LP/CO Detector - Alarm During Test:

Yes, When Button Pressed

Smoke Detector - Brand:Other
Model / Serial # : S1816**Smoke Detector - Date:**

One Year Old

Smoke Detector - Test Method:

Tested By Pushing Button

Smoke Detector - Alarm During Test:

Yes, When Button Pressed

Fire Extinguisher - Brand:

Kidde

Fire Extinguisher - Size:

10 B:C - Minimum 10 B:C Required

Fire Extinguisher - Meets Minimum Size Requirement:

Yes

Fire Extinguisher - Mounted Within 24 Inches of Entrance Door:

No

Fire Extinguisher - Secured in Bracket:

No

Fire Extinguisher - Gauge Indicates Charged State:

Yes

Items

18.0 ASME Tank - Condition

Acceptable

18.1 ASME Tank - Rust or Damage

Acceptable

18.2 ASME Tank - Hoses and Regulators - Condition

Acceptable

18.3 ASME Tank - Cover over Regulator

Acceptable

18.4 ASME Tank - Regulator Vents Downwards

Acceptable

18.5 ASME Tank - LP Shutoff Valve - Operation

Yes

18.6 LP Detector - Condition and Operation

Acceptable

18.7 Carbon Monoxide (CO) Detector - Condition and Operation

Acceptable

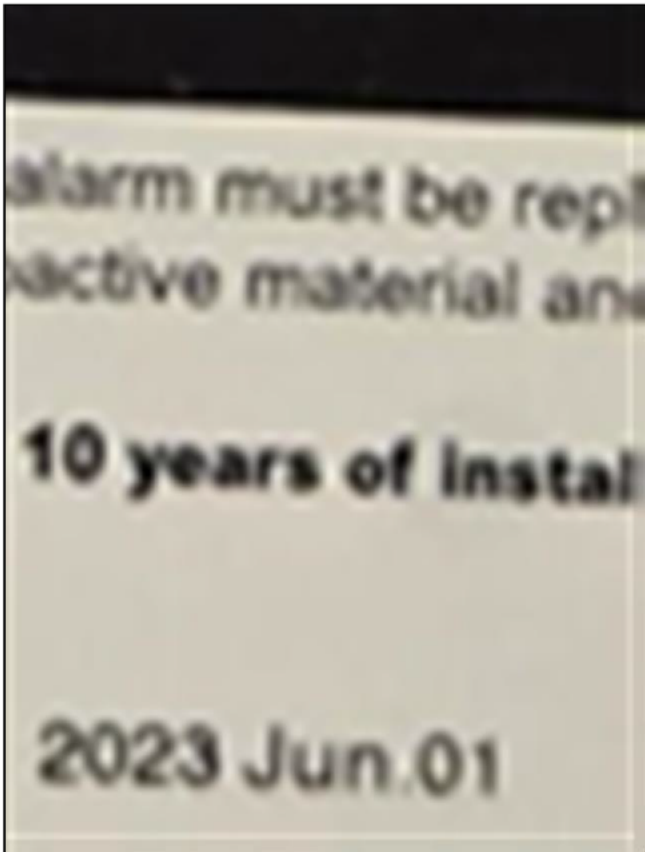
18.8 Combination LP / CO Detector - Condition and Operation

Yes

18.9 Smoke Detector - Condition and Operation

Acceptable

The smoke detector's date is Jun 01 2023.



Smoke Detector

18.10 Fire Extinguisher - Condition

Acceptable

The fire extinguisher date 2016 and the gauge is in the green.



Fire Extinguisher Date



Fire Extinguisher Gauge

19. Appliances: Kitchen

NOTE: Refrigerators need to be on for a minimum of 12 hours to be at full cooling condition. This inspection may not reveal a problem if during the inspection the refrigerator was not on for the minimum recommended time.

Styles & Materials

Refrigerator - Brand: Whirlpool	Refrigerator - Type: Residential Style - 120 VAC Compressor	Refrigerator - Cooling Source(s): 12 Volts DC
Refrigerator - User Control Panel - Location: Inside Door	Refrigerator - Has Unit been Running 12 + Hours: Yes	Refrigerator - Thermister Sensor - Type: Adjustable
Refrigerator - Vent Panels - Location: None	Refrigerator - Current Temperature: Degrees F Degrees : 32	Refrigerator - Freezer - Current Temperature: Degrees F Degrees : 2
Cooktop - Brand: Atwood	Cooktop - Regulator Installed on Propane Line: Yes	Cooktop - Burner Ignition Source: Piezo Ignition - Turn Knob To Create Spark
Cooktop Exhaust Vent - Part of Microwave: Yes	Cooktop Exhaust Vent - Venting Type: Recirculates Air	Microwave - Brand: Whirlpool

Microwave - Type: Microwave / Convection	Microwave - Output Wattage Rating: 1100 Watts	Microwave - Temperature of Water after 60 Seconds: Degrees F Degrees : 125
Microwave - Rack(s) and Turntable are Installed: Yes		

Items
19.0 Refrigerator - Exterior - Backside Cooling Coils / Proper Venting Not Inspected There is no access to the back of the refrigerator.
19.1 Refrigerator - Exterior - Recall Installed (Back of Refrigerator) Not Inspected There is no access to the back of the refrigerator.
19.2 Refrigerator - Exterior - Dauber Screens Installed No
19.3 Refrigerator - Exterior - Condensate Line Drain - Condition Acceptable
19.4 Refrigerator - Operates on All Sources No
19.5 Refrigerator - Condition Acceptable
19.6 Refrigerator - User Control Panel Acceptable
19.7 Refrigerator - Front Side Door Panels Acceptable
19.8 Refrigerator - Front Side Door Frame Acceptable
19.9 Refrigerator - Door Seals Acceptable
19.10 Refrigerator - Door Latch Secure Acceptable
19.11 Refrigerator - Inside Light - Operation Acceptable
19.12 Refrigerator - Thermostat Sensor - Control Mounted on Fins Acceptable
19.13 Refrigerator - Inside Walls Acceptable
19.14 Refrigerator - Shelves / Door Racks Acceptable
19.15 Refrigerator - Crisper Trays and Drawers Acceptable
19.16 Refrigerator - Odor Detectable No
19.17 Refrigerator - Freezer - Inside Walls Acceptable

19.18 Refrigerator - Freezer - Shelves / Door Racks

Acceptable

19.19 Refrigerator - Freezer - Odor Detectable

No

19.20 Cooktop - Condition

Acceptable

19.21 Cooktop - Knobs / Controls / - Condition

Acceptable

19.22 Cooktop - Burner Grate / Cover - Condition

Acceptable

19.23 Cooktop - Color of Burner Flame

Acceptable

19.24 Cooktop - All Burners Operate

Yes

19.25 Cooktop - Rubber Grommets for Stovetop Grate

Yes

19.26 Cooktop - Cover Matches Countertop Material

Yes

19.27 Cooktop Exhaust Vent - Condition

Acceptable

19.28 Cooktop Exhaust Vent - Fan Speeds and Vent Condition

Acceptable

19.29 Cooktop Exhaust Vent - Filter and Lighting - Condition

Acceptable

19.30 Microwave - Condition

Acceptable

19.31 Microwave - Convection Mode - Fan Blower - Operation

Acceptable

19.32 Microwave - Convection Mode - Verified Temperature of 350 Degrees F

No

The temperature only reached 325.

20. Appliances: Other

Styles & Materials

Water Heater - Brand:

Atwood
Model / Serial # :
20170106

Water Heater - Type:

Tank Type

Water Heater - Heat Source(s):

Electric
Propane

Water Heater - Ignition Type:

Direct Spark Ignition (DSI)

Water Heater - Water Output Temperature:

Degrees F
Degrees : 127

Water Heater - Bypass Valves in Correct Position:

Yes

Furnace #1 - Brand:

Atwood

Washer / Dryer - Type:

Washer / Dryer Combo

Washer - Brand:

Whirlpool

Dryer - Brand:

Whirlpool

Items**20.0 Water Heater - Condition**

Acceptable

20.1 Water Heater - Operates on All Sources

Yes

20.2 Water Heater - Exterior - Burner Assembly Area - Condition

Acceptable

20.3 Water Heater - Exterior - Rubber Grommet(s)

Yes

20.4 Water Heater - Exterior - Dauber Screens Installed

No

20.5 Water Heater - Exterior - Leaks at Pressure Relief Valve

No

20.6 Water Heater - Exterior - Correct Drain Plug Installed

Yes

20.7 Furnace #1 - Operation

Acceptable

20.8 Furnace #1 - Floor Vents Blocked or Covered

No

20.9 Furnace #1 - Warm Air Discharge Out of Vents

Yes

20.10 Furnace #1 - Return Air Blocked

No

20.11 Furnace #1 - Exterior - Air Intake / Exhaust Area - Condition

Acceptable

20.12 Furnace #1 - Exterior - Dauber Screens Installed

No

20.13 Washer - Operation and Condition

Acceptable

20.14 Washer - Signs of Leaks or Damaged Hoses

No

20.15 Dryer - Operation and Condition

Acceptable

20.16 Dryer - Vent Condition

Acceptable

21(A) . Front Air Conditioner

NOTE: The Delta-T average acceptable performance range is 14 to 22 degrees F (8 to 12 degrees C). In high humidity areas, the range may be lower (12 to 16 degrees F or 7 to 9 degrees C) and in desert areas, it may be higher (23 to 26 degrees F or 13 to 15 degrees C).

NOTE: Restricted air flow over the evaporator coils may also cause greater than 22°F temperature differences. In these cases, even though the temperature difference is greater the capacity of the AC unit would be less.

Styles & Materials		
Air Conditioner - Brand: Dometic	Air Conditioner - Thermostatic Controls: Dual with Furnace	Air Conditioner - Options: Air Conditioner Only
Air Conditioner - Delta-T: Degrees F Degrees : 16		

Items
21.0.A Air Conditioner - Condition Acceptable
21.1.A Air Conditioner - Filter - Condition Acceptable
21.2.A Air Conditioner - Exhaust - Condition Acceptable

21(B) . Center Air Conditioner

Items
21(C) . Rear Air Conditioner

Styles & Materials		
Air Conditioner - Brand: Dometic	Air Conditioner - Thermostatic Controls: Dual with Furnace	Air Conditioner - Options: Air Conditioner Only
Air Conditioner - Delta-T: Degrees F Degrees : 20		

Items
21.0.C Air Conditioner - Condition Acceptable
21.1.C Air Conditioner - Filter - Condition Acceptable
21.2.C Air Conditioner - Exhaust - Condition Acceptable
21.3.C Air Conditioner - Heat Mode - Operation Acceptable

22. Interior

Styles & Materials

Ceiling Vents - Type: Electric Vent with Fan - Thermostatic Controls	System Controls / Switches - Type: Maunal Switches	Lights - Light Bulbs - Type: LED
Closets / Cabinets / Pantries -Types of Hinges: Hidden	Window Coverings / Blinds - Type: Double Roller - Attached at Bottom	Flooring - Type: Sheet Vinyl
Kitchen Sink - Style: Double Bowl	Kitchen Sink - Type: Stainless	Bathroom Sink - Style: Single Bowl
Bathroom Sink - Type: Stainless	Shower / Tub - Style: Shower Stall	Shower / Tub - Enclosure - Type: Glass Door(s)

Items

- 22.0 Interior - Condition
Acceptable
- 22.1 System Controls / Switches - Operation
Acceptable
- 22.2 System Controls / Switches - Condition
Acceptable
- 22.3 Ceiling - Condition
Fair
(1) The ceiling above the stove has a tear.



Ceiling Above Stove

(2) The wallpaper above the coach is coming loose.



Above Coach

(3) There is a teat in the ceiling above the driver seat.



Ceiling Above Driver Seat

22.4 Ceiling - Panels Loose

No

22.5 Ceiling - Discoloration or Stains

Fair

The curbside bedroom ceiling has a stain.



Curbside Bedroom Ceiling

22.6 Ceiling - Water Damaged Panels

No

22.7 Ceiling - Trim Work Missing or Damaged

No

22.8 Ceiling - Vents and Skylights - Condition

Acceptable

22.9 Ceiling - Vents and Skylights - Thermostatic Controls and Switches - Operation

Acceptable

22.10 Ceiling - Vents and Skylights - Trim Ring Around Vents and Skylights

Acceptable

22.11 Ceiling - Vents and Skylights - Stains Around Roof Vents and Skylights

Acceptable

22.12 Ceiling Vents - Manual - Operation

Acceptable

22.13 Ceiling Vents - 12-Volt DC Fans - Operation

Acceptable

22.14 Lights and Light Fixtures - Condition

Acceptable

22.15 Lights and Light Fixtures - 12-Volt DC Lights - Operation

Acceptable

22.16 Lights and Light Fixtures - Wall Mounted Light Fixtures - Operation

22.17 Lights and Light Fixtures - Rope Lights - Operation

No

22.18 Lights and Light Fixtures - Spot Lights - Operation

No

22.19 Lights and Light Fixtures - Floor Lights - Operation

No

22.20 Lights and Light Fixtures - Entry Lights Inside RV - Operation

Acceptable

22.21 Lights and Light Fixtures - Missing or Broken Lenses

No

22.22 Lights and Light Fixtures - Missing Shades or Broken Covers

No

22.23 Walls - Condition

Acceptable

There is a ripple in the bathroom wallpaper.



Bathroom Wallpaper

22.24 Walls - Panels Loose

No

22.25 Walls - Water Damaged Panels

No

22.26 Walls - Panels Discolored or Stained

No

22.27 Walls - Soft Spots

No

22.28 Walls - Trim Work on Walls - Condition

Acceptable

22.29 Walls - Damage Repairs Performed

No

22.30 Walls - Holes or Wall repairs

No

22.31 Interior Doors - Condition

Acceptable

22.32 Interior Doors - Operation

Acceptable

22.33 Privacy Curtains /Screens - Condition

Acceptable

22.34 Privacy Curtains / Screens - Operation

Acceptable

22.35 Closets / Cabinets / Pantries - Condition

Acceptable

22.36 Closets / Cabinets / Pantries - Operation

Acceptable

22.37 Closets / Cabinets / Pantries - Door Damage / Scratches

No

22.38 Closets / Cabinets / Pantries - Wood Rot or Broken

No

22.39 Closets / Cabinets / Pantries - Drawer Damage / Scratches

No

22.40 Countertop - Damage / Scratches

No

22.41 Windows - Condition

Acceptable

22.42 Windows - Operation

Acceptable

22.43 Windows - Screens - Condition

Acceptable

22.44 Windows - Emergency Exit Windows - Operation

Acceptable

22.45 Windows - Emergency Exit Windows - Installed

Yes

22.46 Windows - Window Covering / Blinds - Operation

Acceptable

22.47 Windows - Window Covering / Blinds - Condition

Acceptable

22.48 Flooring - Condition

Acceptable

22.49 Flooring - Sheet Vinyl - Condition

Acceptable

22.50 Flooring - Floor Panels Loose

No

22.51 Flooring - Floor Covering Discolored or Stained

No

22.52 Flooring - Water Damage

No

22.53 Flooring - Sheet Vinyl Stained

No

22.54 Flooring - Soft Spots in Floor

No22.55 Flooring - Previous Repairs Performed

No

Acceptable

22.57 Kitchen Faucet - Hot and Cold Water Available

Yes

22.58 Kitchen Faucet - Leaks at Stem

No

22.59 Kitchen Sink - Condition

Acceptable

22.60 Kitchen Sink - Sink(s) Holds Water

Yes

22.61 Kitchen Sink - P-Trap Holds Water

Yes

22.62 Kitchen Sink - Under Sink - Condition

Acceptable

22.63 Toilet - Operation and Condition

Acceptable

22.64 Toilet - Bowl Holds Water

Yes

22.65 Toilet - Mounting Problems

No

22.66 Toilet - Water Leaks

No

22.67 Toilet - Indication of Previous Damage or Repair

No

22.68 Shower / Tub - Condition

Acceptable

22.69 Shower / Tub - Operation

Acceptable

22.70 Shower / Tub - Hot and Cold Water Available

Yes

22.71 Shower / Tub - Stains or Chemical Buildup

No

22.72 Shower / Tub - Discoloration

No

22.73 Shower / Tub - Water Damage or Leaks

No

22.74 Shower / Tub - Glass Doors - Operation

Acceptable

22.75 Shower / Tub - Door(s), Frames and Seals - Condition

Acceptable

22.76 Shower / Tub - Door Latch - Operation

Acceptable

22.77 Shower / Tub - Soap Dish in Place

Yes22.78 Shower / Tub - Towel Racks in Place

Yes

- Acceptable
- 22.80 Bathroom Faucet - Hot and Cold Water Available
- Yes
- 22.81 Bathroom Faucet - Leaks at Stem
- No
- 22.82 Bathroom Sink - Condition
- Acceptable
- 22.83 Bathroom Sink - Sink(s) Hold Water
- Fair
- The stopper does not stay closed.
- 22.84 Bathroom Sink - P-Trap Holds Water
- Acceptable
- 22.85 Bathroom Sink - Under Sink - Condition
- No

23. Furniture

Styles & Materials		
Mattress - Type:	Closet(s) / Cabinet(s) / Dresser(s) - Hinges - Type:	Sofa(s) - Type:
Memory Foam	Hidden	Pull Out Bed

- Items
- 23.0 Chair - Condition
- Acceptable
- 23.1 Chair - Fabric Tears or Separation
- No
- (2) The driver's chair is showing wear.
- 23.2 Chair - Fabric Discoloration or Stains
- No
- 23.3 Chair - Signs of Excess Wear
- No
- 23.4 Chair - Water Damage
- No
- 23.5 Sofa(s) - Condition
- Acceptable
- 23.6 Sofa(s) - Operation
- Acceptable
- 23.7 Sofa(s) - Fabric Tears or Separation
- Fair

The front arm of the sofa has vinyl separating.



Sofa Right Arm

23.8 Sofa(s) - Fabric Discolored or Stains

Acceptable

23.9 Sofa(s) - Signs of Excess Wear

Acceptable

23.10 Sofa(s) - Water Damage

Acceptable

23.11 Dinette or Table and Chairs - Condition

No

23.12 Dinette or Table and Chairs - Operation

Acceptable

23.13 Dinette or Table and Chairs - Fabric Tears or Separation

Acceptable

23.14 Dinette or Table and Chairs - Fabric Discolored or Stains

Acceptable

23.15 Dinette or Table and Chairs - Signs of Excess Wear

Acceptable

23.16 Dinette or Table and Chairs - Water Damage

Acceptable

23.17 Dinette or Table and Chairs - Previous Repairs Performed

No

23.18 Bed(s) - Condition

Acceptable

The bed above the driving area operates as expected.



Bed Above Driving Area

23.19 Bed(s) - Fabric Tears or Separation

No

23.20 Bed(s) - Fabric Discolored or Stains

No

23.21 Bed(s) - Signs of Excess Wear

No

23.22 Bed(s) - Bed Covers Present

Yes

23.23 Bed(s) - Covers Match Decor

Yes

23.24 Closet(s) / Cabinet(s) / Dresser(s) - Condition

Acceptable

23.25 Closet(s) / Cabinet(s) / Dresser(s) - Operation

Acceptable

23.26 Closet(s) / Cabinet(s) / Dresser(s) - Door Damage or Scratches

No

(s) / Dresser(s) - Countertop - Damage or Scratches

- No
- 23.28 Closet(s) / Cabinet(s) / Dresser(s) - Wood Rot or Broken
- No
- 23.29 Closet(s) / Cabinet(s) / Dresser(s) - Drawer Damage or Scratches
- No
- 23.30 Closet Door(s) / Cabinet Door(s) / Drawer(s) - Pull Out - Condition
- Acceptable
- 23.31 Closet Door(s) / Cabinet Door(s) / Drawer(s) - Pull Out - Operation
- Acceptable
- 23.32 Closet Door(s) / Cabinet Door(s) / Drawer(s) - Previous Repairs Performed
- No
- 23.33 Desk / Vanity - Condition
- Acceptable
- 23.34 Desk / Vanity - Operation
- Not Present

24(A) . Above Cab Television

Styles & Materials

Unit Brand:

Other

Model / Serial # : Seki

Items

- 24.0.A Unit Works Properly
- Yes
- 24.1.A Unit Cleaned and Maintained
- Yes
- 24.2.A Unit Properly Mounted and Secured
- Yes
- 24.3.A Unit Remote Control(s) - Operation
- Acceptable
- 24.4.A Antenna - Power Booster - Operation
- Acceptable
- 24.5.A Antenna - Picks Up Local Channels
- Acceptable

24(B) . Living Room Television

Styles & Materials

Unit Brand:

Other

Model / Serial # : Seki

Items
24.0.B Unit Works Properly Yes
24.1.B Unit Cleaned and Maintained Yes
24.2.B Unit Properly Mounted and Secured Yes
24.3.B Unit Remote Control(s) - Operation Yes
24.4.B Antenna - Power Booster - Operation Yes
24.5.B Antenna - Picks Up Local Channels Yes
24(C) . Bedroom Television

Styles & Materials
Unit Brand: Other Model / Serial # : Seki

Items
24.0.C Unit Works Properly Yes
24.1.C Unit Cleaned and Maintained Yes
24.2.C Unit Properly Mounted and Secured Yes
24.3.C Unit Remote Control(s) - Operation Yes
24.4.C Antenna - Power Booster - Operation Yes
24.5.C Antenna - Picks Up Local Channels Yes
24(D) . Outdoor Television

Styles & Materials
Unit Brand: Other Model / Serial # : Seki

Items
24.0.D Unit Works Properly
Yes
24.1.D Unit Cleaned and Maintained
Yes
24.2.D Unit Properly Mounted and Secured
Yes
24.3.D Unit Remote Control(s) - Operation
Yes
24.4.D Antenna - Power Booster - Operation
Yes
24.5.D Antenna - Picks Up Local Channels
Yes
24(E) . Radio / Stereo

Styles & Materials

Unit Brand:
Other
Model / Serial # : Jenson

Items

24.0.E Unit Works Properly

Poor

The radio does not work because the antennae is broken off.



Roof Antennae

24.1.E Unit Cleaned and Maintained

Yes

24.2.E Unit Properly Mounted and Secured

Yes

24.3.E Unit Remote Control(s) - Operation

Yes

24.4.E Antenna - Power Booster - Operation

Yes

24.5.E Antenna - Picks Up Local Channels

Yes