



3504 N. JANSSEN

7 Beds | 7.1 Baths | 6965 sqft | Extra Wide 37.5' Lot

JASON O'BEIRNE

773-368-3421 | jasonobeirne.com
jobeirne@jamesonsir.com

Jameson | Sotheby's
INTERNATIONAL REALTY



Site Plan

- 37.5 x 124 lot
- Landscaping and sod
- Attached three-car garage with finished interior
- Fully enclosed yard
- Spacious main level patio
- Primary bedroom balcony
- 3rd floor front patio and covered back patio with outdoor fireplace

Exterior

- Brick: Glen-Gery Granite Red Colonial
- Siding: JamesHardie panel in Iron Gray
- Windows and patio doors: Weather Shield Signature Series Aluminum-Clad Wood Windows in Black
- Front door: Glenview Haus Mahogany front door with transom in Coffee Bean finish with EMTEK hardware

Interior

- 7 Bedrooms, 7.1 Baths
- 6965 square feet
- Flooring: 4" White Oak hardwood throughout main and upper levels, carpeted lower level
- Interior doors: Solid core, single panel doors with EMTEK Helios door hardware
- 8' interior doors on lower, main, and second level
- Custom casework and ceiling details
- Ceilings: Lower 9'4", Main 10'8", 2nd 9', 3rd 8'
- Fireplaces
- **Living room:** ProBuilder 42" Traditional gas fireplace
- **Great room:** Fireplace Xtrordinair 6015 High Output Linear fireplace
- **Covered patio:** FireGarden 4024 Outdoor Linear Gas Fireplace
- Built-ins in great room
- Rear mudroom with built-in bench and coat closet
- Custom built self-supporting staircase
- 30" x 46" Velux skylight over main staircase
- Radiant Heat: Throughout lower level, mudroom, garage, and all bathrooms

Kitchen

- Custom shaker style rift cut White Oak cabinetry
- Butler's Pantry with sink and wine cooler
- Prep kitchen/pantry with sink and second dishwasher
- Breakfast area + island with bar seating
- Plumbing Fixtures
- **Kitchen:** Graff Perfeque Pull-Down Faucet
- **Soap dispenser:** Graff
- **Butler's Pantry:** Hansgrohe Focus HighArc Faucet
- Appliances:
 - Sub-Zero 30" Designer Column Refrigerator with Internal Dispenser
 - Sub-Zero 30" Designer Column Freezer with Ice Maker
 - Wolf 48" Sealed Burner Rangetop - 6 Burners and Infrared Griddle
 - Wolf 30" M Series Professional Built-In Double Oven
 - Best built-in range hood
 - Cove 24" Dishwasher (2)
 - Sharp Microwave Drawer
 - Sub-Zero 24" Undercounter Wine storage

Wet Bar

- 3rd floor and lower level wet bar:
- Hansgrohe Focus HighArc Kitchen Faucet with Kohler under-mount sink with rack
 - U-Line 24" Beverage Center

Bathrooms

Primary Bath:

- Steam shower with Jaclo Rain Machine shower head, Phylrich fixtures, and Thermasol touch control
- Victoria & Albert freestanding Barcelona soaking tub with Phylrich freestanding tub filler and hand shower
- Custom shaker style rift cut White Oak cabinetry
- Two Toto Nexus II One-Piece Toilets
- Kohler Rectangle Under-Mount Sink with Phylrich widespread faucet

Ensuite Bath Two:

- Maax Alcove Tub with Phylrich and Kohler fixtures
- Toto Nexus II One-Piece Toilet
- Kohler Rectangle Under-Mount Sink with Phylrich single-handle faucet

Ensuite Bath Three:

- Maax Alcove Tub with Phylrich and Kohler fixtures
- Toto Nexus II One-Piece Toilet
- Kohler Rectangle Under-Mount Sink with Phylrich single-handle faucet

Ensuite Bath Four:

- Maax Alcove Tub with Phylrich and Kohler fixtures
- Toto Nexus II One-Piece Toilet
- Kohler Rectangle Under-Mount Sink with Phylrich single-handle faucet

Bath Five:

- Shower with Phylrich and Kohler fixtures
- Toto Nexus II One-Piece Toilet
- Kohler Rectangle Under-Mount Sink with Phylrich single-handle faucet

Ensuite Bath Six:

- Shower with Phylrich and Kohler fixtures
- Toto Nexus II One-Piece Toilet
- Kohler Rectangle Under-Mount Sink with Phylrich single-handle faucet

Bath Seven:

- Shower with Phylrich and Kohler fixtures
- Toto Nexus II One-Piece Toilet
- Kohler Rectangle Under-Mount Sink with Phylrich single-handle faucet

Main Powder:

- Kohler Rectangle Under-Mount Sink with Phylrich widespread faucet
- Toto Nexus II One-Piece Toilet

Laundry

Upper and lower Laundry:

- Electrolux Front Load Perfect Steam™ Washer with LuxCare® Plus Wash and SmartBoost® - 4.5 Cu. Ft.
- Electrolux Front Load Perfect Steam™ Gas Dryer with LuxCare® Dry and Instant Refresh - 8.0 Cu. Ft.
- Allure stainless steel sink with Moen faucet

Electrical

- 400 amp service provided
- Recessed cans throughout
- Designer light fixtures

Low Voltage

- Security & fire alarm system with 3 keypads
- DoorBird video entry system for front gate
- Low voltage pre-wire for data, cable, cameras, speakers and window shades

Mechanical

- 3-zone High efficiency HVAC systems
- Two 75 gallon high efficiency gas water heaters
- Drain tile system with sump and ejector pump
- Fire suppression sprinkler system
- Hydronic snow melt - front entry walkway and stairs





Sub-Zero Column Panel Ready Refrigerator and Freezer

Interior water dispenser with advanced filtration, Air purification system, Automatic ice maker, Monitor and control remotely with Wi-Fi connectivity

Sub-Zero 24" Panel Ready Undercounter Wine storage

42 Bottle capacity, Wi-Fi enabled features allow for remote control of independent temperatures zones, provide important door-ajar notifications, and assist with remote service diagnostics—all from your mobile device

Best Potenza series built-in hood

Wolf 48" Sealed Burner Rangetop

6 Dual-stacked, sealed burners, Infrared griddle, Heavy-gauge stainless steel, Continuous cast-iron grates, Spark ignition system

Wolf 30" M Series Professional Built-In Double Oven

Interactive touchscreen control, Advanced Dual Verti-Cross™ convection system, a variety of modes, including Convection Roast, Proof, and Dehydrate, prepares 50 popular dishes with the Gourmet feature that automatically adjusts cook times and temperatures

Cove 24" Panel Ready Dishwasher (2)

43 spray jets across three spray arms, Four-stage, fine mesh filter, adjustable shelves/racks

Sharp Microwave Drawer

Easy Touch automatic drawer system smoothly opens and enables hands-free close

Graff Perfeque Pull-Down Faucet

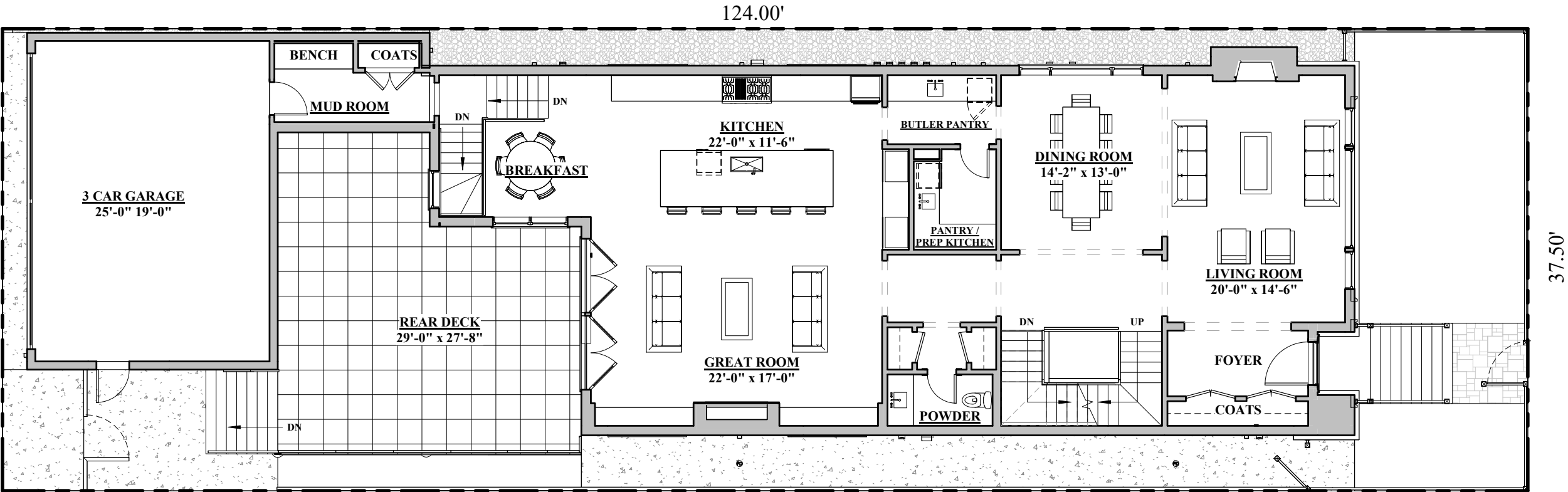
Kitchen

Hansgrohe Focus HighArc Faucet

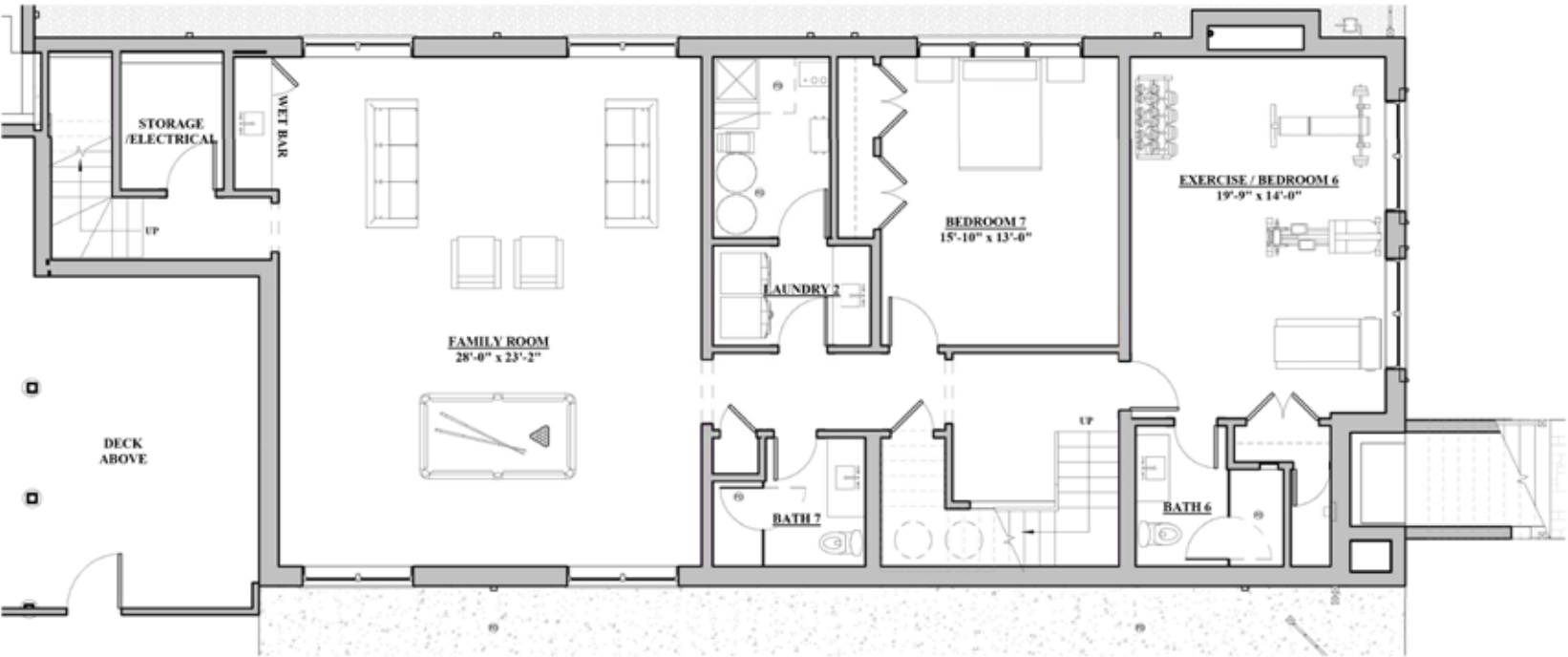
Butler Pantry

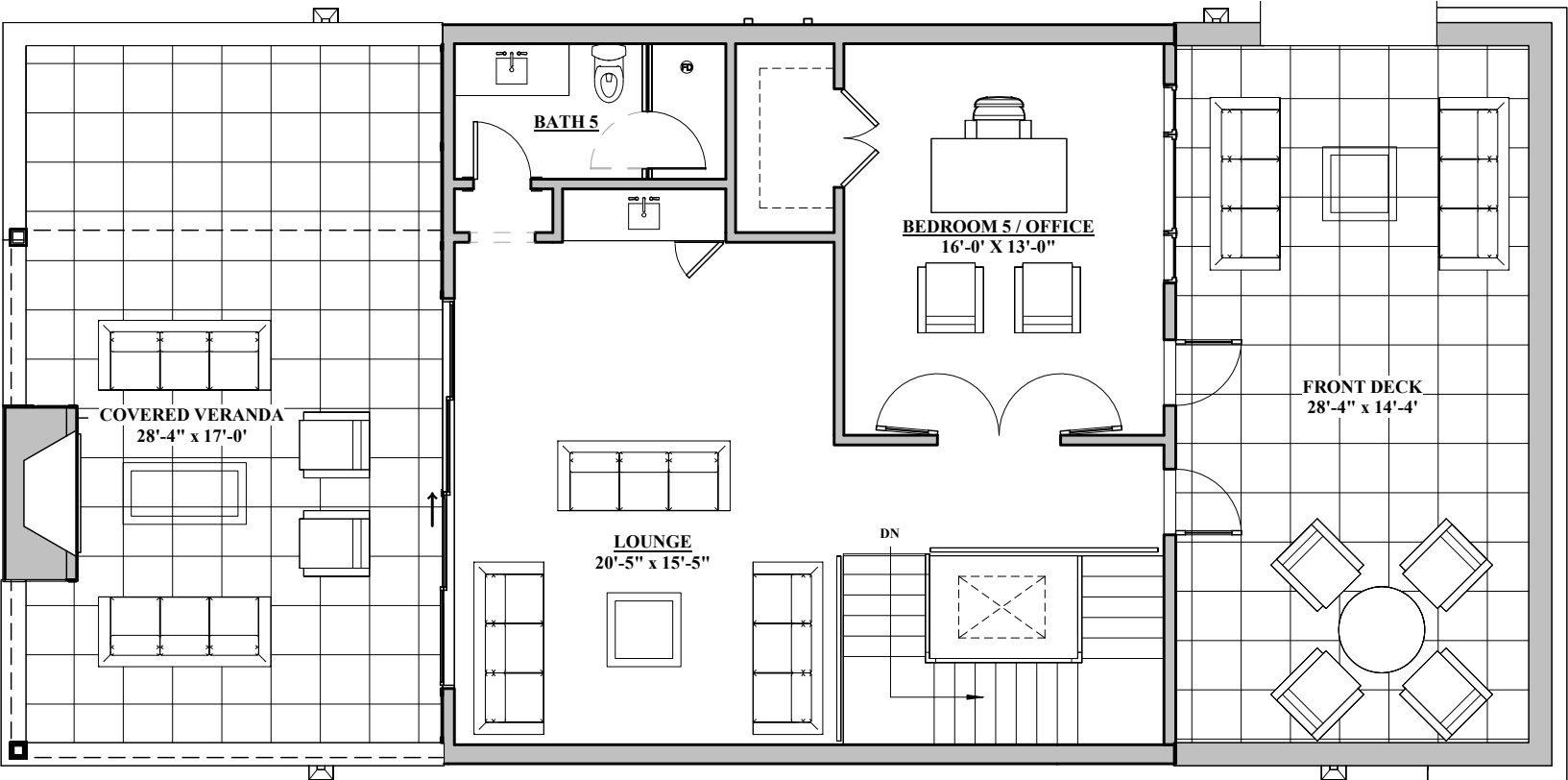
Graff Soap Dispenser

Main Level

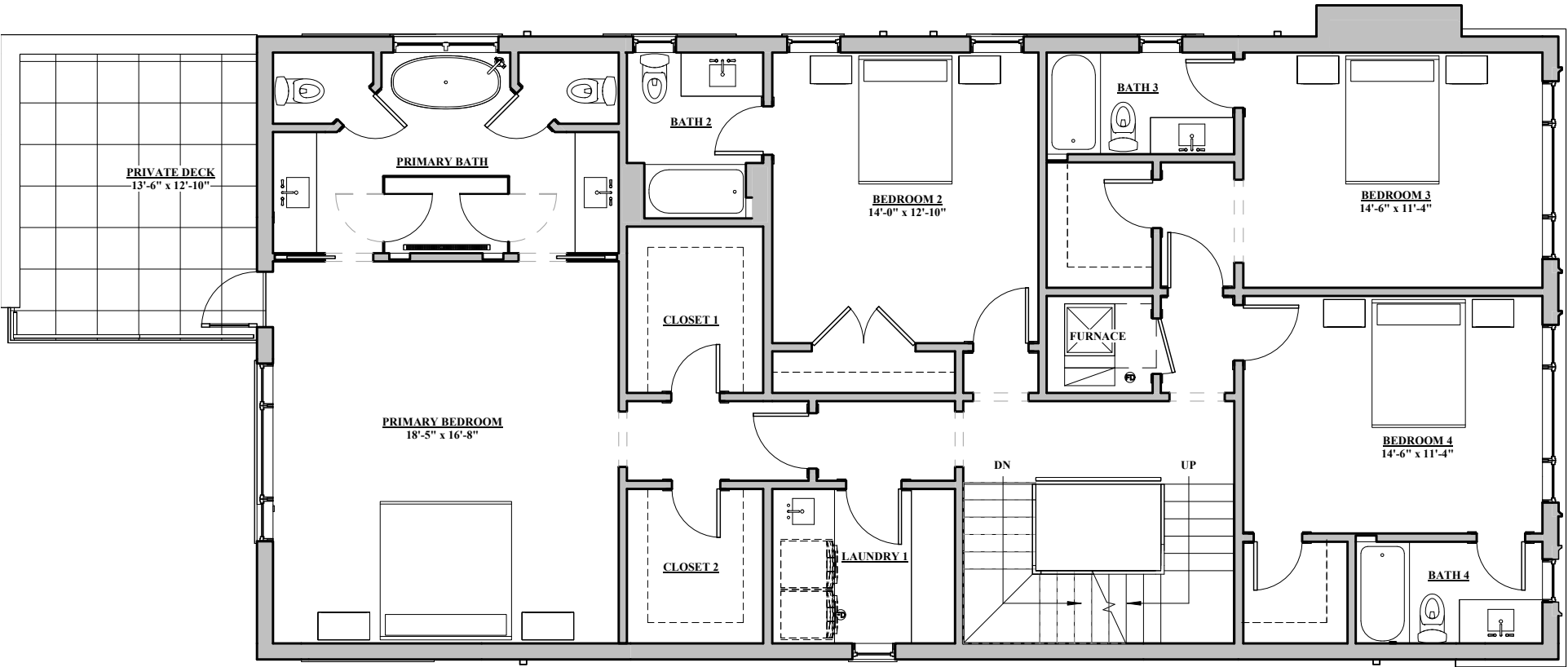


Lower Level

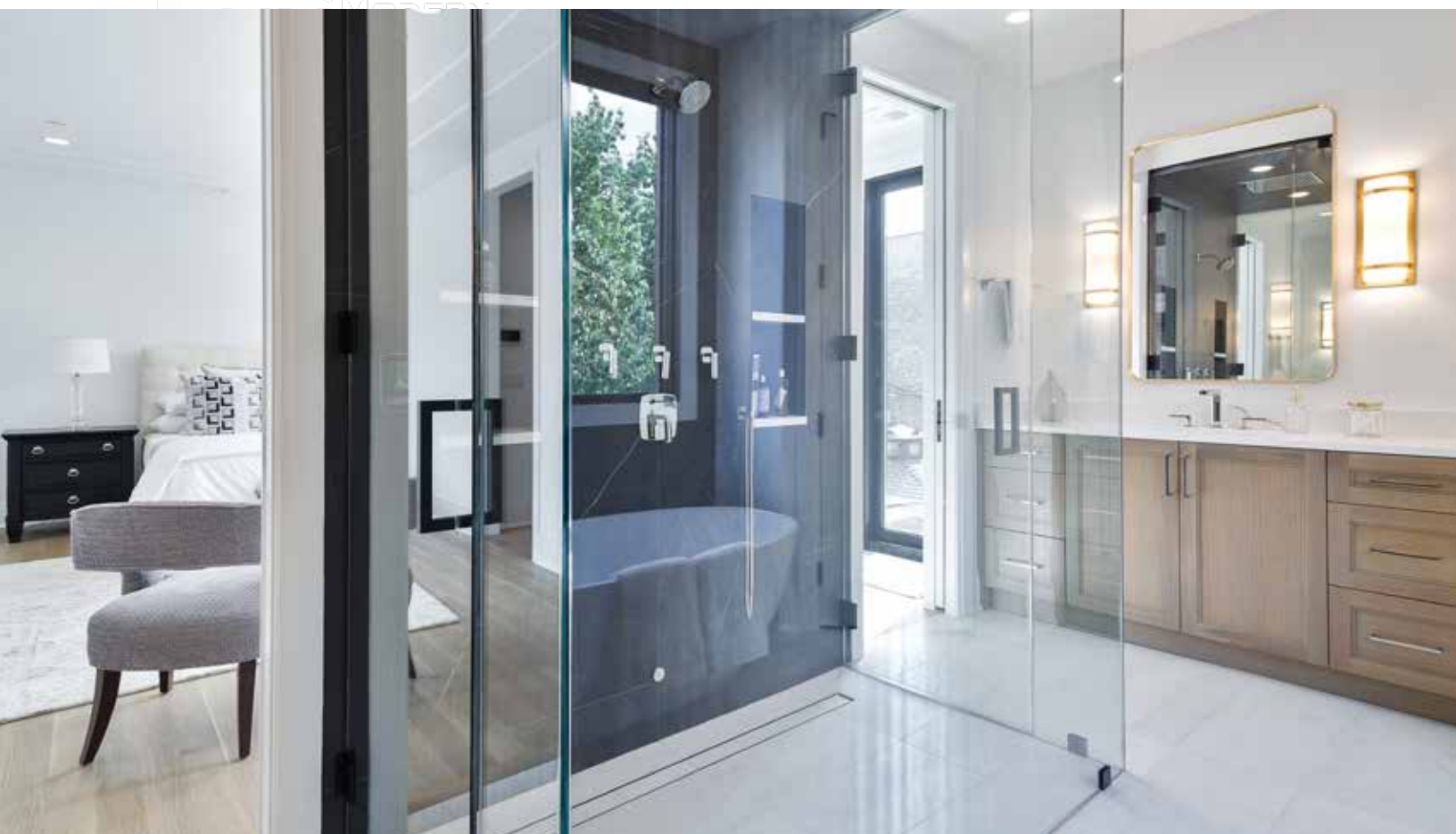




Third Level



Second Level









JASON O'BEIRNE

773.368.3421 | jasonobeirne.com | jobeirne@jamesonsir.com | Jameson | Sotheby's
INTERNATIONAL REALTY

Sotheby's International Realty® and the Sotheby's International Realty Logo are service marks licensed to Sotheby's International Realty Affiliates LLC and used with permission. Jameson Real Estate LLC fully supports the principles of the Fair Housing Act and the Equal Opportunity Act. Each franchise is independently owned and operated. Any services or products provided by independently owned and operated franchisees are not provided by, affiliated with or related to Sotheby's International Realty Affiliates LLC nor any of its affiliated companies.