

NEW TOWN THREATS

What are the threats?

Stratford on Avon District Council (SDC) with Warwick DC have identified the **Long Marston / Meon Vale** area for a **NEW TOWN** of **10,000–12,000 homes** (known as **'site E1'**). A proposed **relief road** (the Southwest Relief Road, 'SWRR') is also proposed to pave the way for the new town. This Relief Road will cause major harm AND potentially open-up significant future development along its length. The impact to our communities will be significant and will have generational, irreversible harm.

SDC has also highlighted **South East Stratford** for growth (**Strategic Growth Site 19, 'SG19'**) with **3,000 - 4,000 new homes** and significant traffic.

Why should this matter to you?

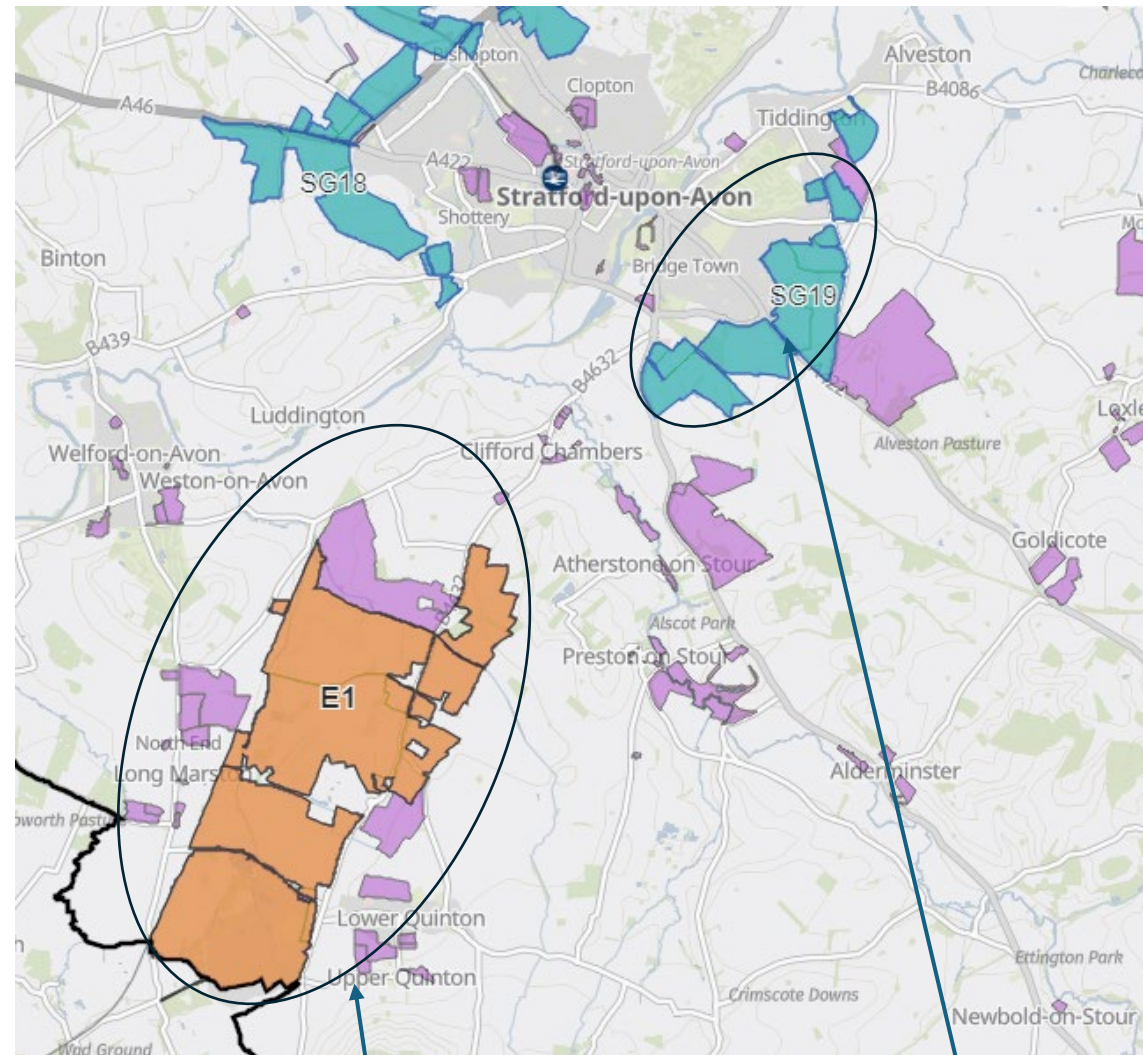
These proposals, on their own and jointly, will impact harmfully on communities in **Meon Vale, Quinton, Long Marston, Welford on Avon, Luddington, Weston on Avon, Binton, Clifford Chambers and Milcote, Bridge Town/Trinity Mead (S-u-A), Preston on Stour, Atherstone, Bidford on Avon, Mickleton, Pebworth..and more**

Serious concerns include transport, infrastructure, environmental impact, and long-term sustainability. That would likely just be the start too.

Impacts will not stop at the District/County boundary. **E1** will be a town almost the size of Stratford. We all know that south of the river is the **WRONG** place for such development (**E1 and SG19**). The Local Plan should focus on better-connected locations north of the river, near the A46 and M40, and the many rail stations in that area where a relief road would NOT be required. Or around larger, well-connected settlements like Leamington and Warwick. This would save SDC £ 100's millions.

I'm concerned, how can I help?

Sharing objections matters – other parishes are doing/have done this in large numbers. We need to do the same **QUICKLY – SEE OVERLEAF**



Proposed new settlement, site E1 (orange/purple)
890+ hectares (c 9km²)

Approx. 10- 12,000 houses

Approx. 29,000 population

Approx. 5,000 additional vehicles at peak hour

Strategic Growth site 19 (SG19):
South East Stratford (blue)

230 hectares
Approx. 3000-4000 houses

Approx. 9,000 population
Approx. 1500 additional vehicles at peak hour

TAKE ACTION BEFORE 18th May

Send your OBJECTION in to SDC – AND – spread the word!

Send your objection to these people/addresses:

John Careford, SDC	john.careford@stratford-dc.gov.uk
Graham Nelson, SDC	graham.nelson@stratford-dc.gov.uk
Manuela Perteghella MP	manuela.perteghella.mp@parliament.uk
Cllr Stuart Keighley	stuart.keighley@stratford-dc.gov.uk
Cllr Susan Juned	susan.juned@stratford-dc.gov.uk
Cllr Cliff Brown	cliff.brown@stratford-dc.gov.uk
Cllr Paul Harrison	paul.harrison@stratford-dc.gov.uk
Cllr Jenny Fradgley	jenny.fradgley@stratford-dc.gov.uk
Local plan teams	swlp@stratford-dc.gov.uk & swlp@warwickdc.gov.uk

Please copy your email to (so that we can check numbers) replies@clifford-milcote-ra.org

Email header : Objection to South Warwickshire Local Plan and South West Relief Road proposals

In your email please include your name and where you live, that you object and why. The following list overleaf are examples of some points you may want to include. You will have your own too.

So, Dear Stratford on Avon District Council

Objection to South Warwickshire Local Plan and South West Relief Road

I object to the above because.....

If you would like further information on the proposals please contact us at planning@clifford-milcote-ra.org

And lastly please take action to ask your neighbours & friends in your community and those listed in previous page to do the same. Numbers matter and before 18th May.

We will be back in touch when SDC carry out their next formal consultation.

**Sent from - Clifford Chamber & Milcote Residents' Association
working with other communities
Contact: planning@clifford-milcote-ra.org**

Many residents believe that:

- Surrounding communities will face worsening congestion and traffic overflow, with air, light and noise pollution, including Welford, Binton, Mickleton, Clifford and Stratford itself. This is the WRONG side of the river. The relief road won't address all these problems from increased traffic.
- We value our DARK SKIES – this will destroy them together with our ecology.
- Our landscape will be destroyed, including the setting of the Cotswold National Landscape (AONB), a NATIONALLY-IMPORTANT designation and elevated views from the north within Preston on Stour and Clifford Chambers parishes.
- Villages will lose their identity through development proximity and scale, including Long Marston, Quinton, Meon Vale and Luddington (relief road)
- The previous 'relief road' plan of 2016 failed to deliver – 10 years later and no relief road. The 2018 relief road planning application is still to be determined. This history casts doubt on whether a relief road would come forwards. Let alone the matter of COSTS. Better to spend that money on much-needed Affordable Housing and other infrastructure across the Districts than on a white elephant.
- Floodplain risks, topography, and rising engineering costs have not been properly addressed for the new relief road proposal. The 'Iran' war will already have pushed up costs. UK infrastructure tends to cost far more than anticipated.
- The proposed relief road is being used as a "trigger" for excessive housing expansion and will bring negative impacts of its own on the countryside and communities. And lead to increased pressure for further future development.
- Planning relies too heavily on private car use, with no rail and sustainable transport links. Development should be where transport choices ARE available – near rail and bus routes. And ideally near the strategic road network (A46, M40/M42). Site E1 and SG19 have NONE of these. Sites north of the river DO.
- Alternative locations for housing with stronger transport connections are being overlooked – these include sites at Bearley (BW), Tanworth in Arden (3 sites A1/A2 and East of Danzey), Hatton (B1), Leamington (X1 and X2)