



Note: This industrial Certificate of Analysis (COA) is prepared for industrial/commercial use. It is not intended for consumers and does not address consumer use of this product. For information regarding consumer use and applications of this product, please refer to the product label.

SECTION 1: PRODUCT AND COMPANY IDENTIFICATION

PRODUCT NAME: RETATRUTIDE PEN INJECTOR
PRODUCT CODE: N/A
PRODUCT USE: GLUCAGON-LIKE PEPTIDE-1
COUNTRY OF ORIGIN: U.S.A.

COMPANY: RAPHA PHARMACEUTICALS, INC.
ADDRESS: 7208 W. SAND LAKE RD., SUITE 305, ORLANDO, FL 32819 USA
PHONE: 407-362-7638

SECTION 1 NOTES: RETATRUTIDE 20 MG LOT#: RET20RPDEC25
RETATRUTIDE 40 MG LOT#: RET40RPDEC25

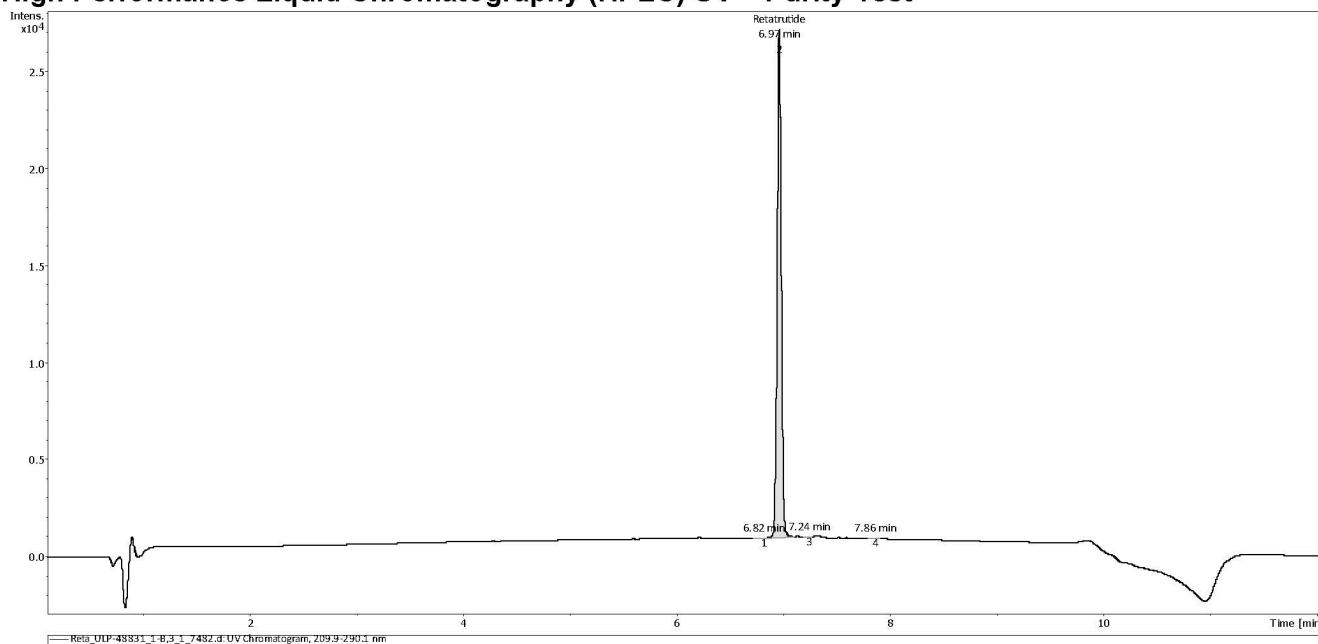
SECTION 2: HIGH PERFORMANCE LIQUID CHROMATOGRAPHY (HPLC) UV AND RESULTS

PHYSICAL & CHEMICAL PROPERTIES:

SPECIFICATIONS

Compound: Retatrutide
Lot Number: Export Lot Production
Analysis Date: 2025-12-15
Purity %: 99.85%
Method: HPLC-UV-MS

High Performance Liquid Chromatography (HPLC) UV – Purity Test



PEAK LIST

	Time (min)	Area	%Area	
1	6.82	2.32E+01	0.03	
2	6.97	6.77E+04	99.85	Retatrutide
3	7.24	2.60E+01	0.04	
4	7.86	5.09E+01	0.08	

Quantification by HPLC-UV

Measured quantity : 20.21 mg/vial

SECTION 2 NOTES: * Injectable peptides may contain salts and sugars to aid in solubility and act as pH buffers. These are not normally detected using UV and are not considered impurities.

CERTIFICATE OF ANALYSIS

NAME OF PRODUCT: RETATRUTIDE PEN INJECTOR

COA DATE: 12/15/2025

SECTION 3: MASS SPECTROMETRY (MS) IDENTITY TEST AND RESULTS

MASS SPECTROMETRY (MS) – IDENTITY TEST

Identity confirmed using HPLC-MS

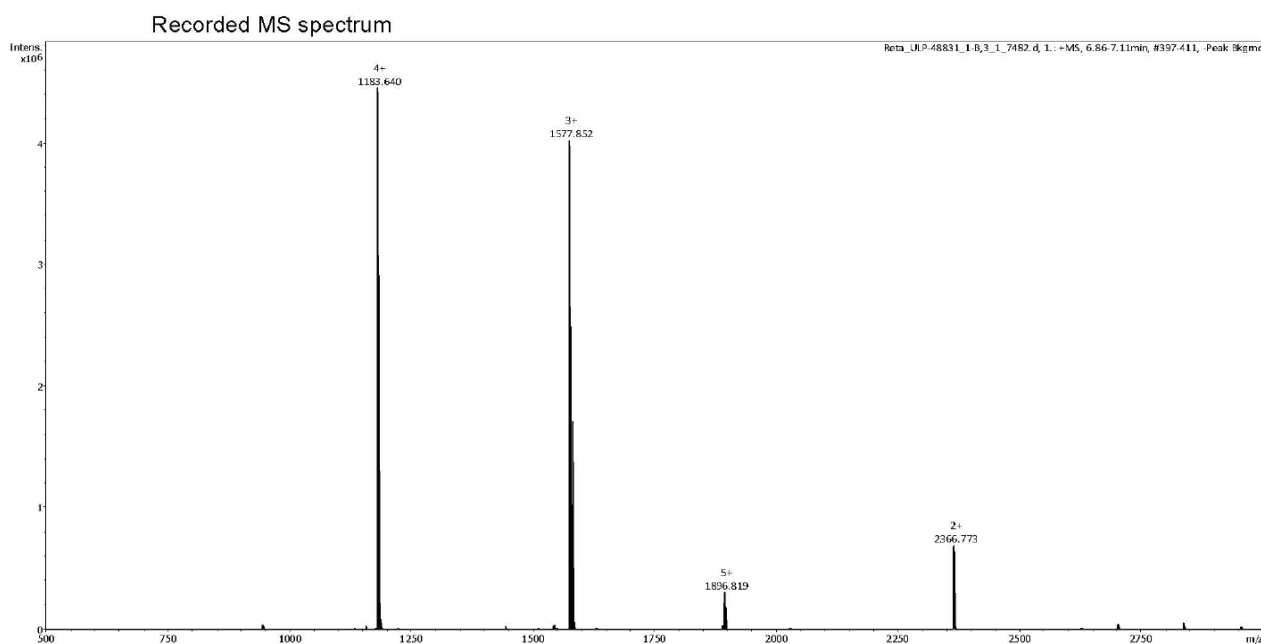
Molecular weight calculated using monoisotopic m/z values from mass spectrum

Expected monoisotopic mass: 4728.47 Da

Measured monoisotopic mass: 4728.55 Da

RESULT: Molecular weight confirmed

SECTION 3 NOTES: *Monoisotopic m/z values are not easily seen in full spectrum view for larger molecules and peptides. The dominant isotopic peak (base peak) shown in the spectrum below can be used to approximate the average molecular weight frequently reported by vendors and databases as a secondary means of confirmation.*



PREPARED BY: BETH FAWCETT, ChE
ANALYTICAL CHEMIST
GLOBAL QUALITY GROUP, INC.
INFO@GLOBALQUALITYGROUP.COM
DATE: 12/15/2025

VERIFICATION QR:

