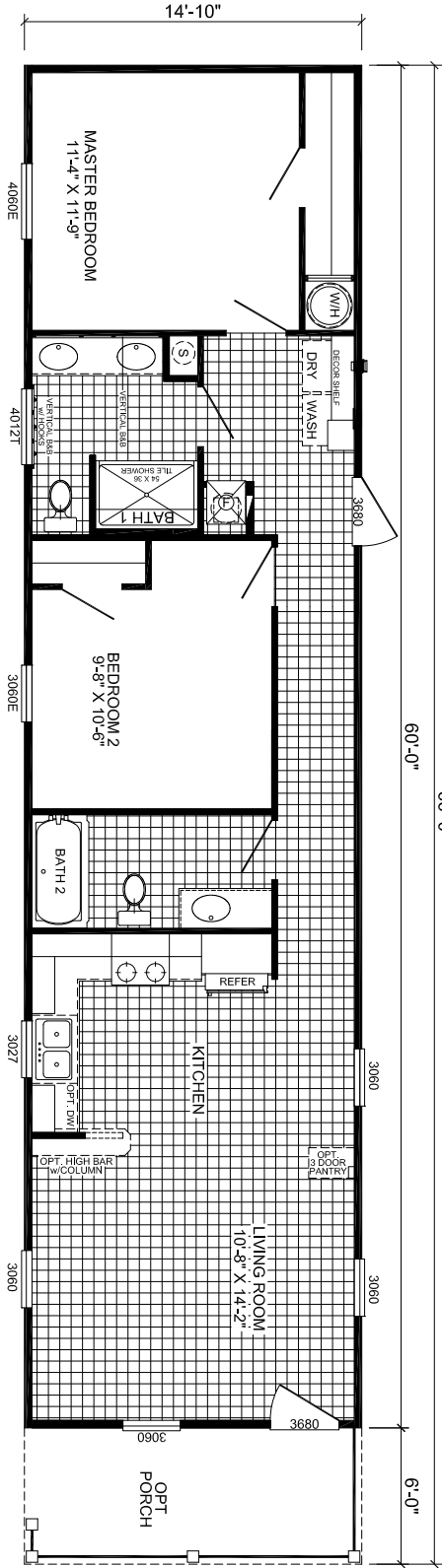


NOTE: SHOWN w/ OPT PORCH

66'-0"
60'-0"

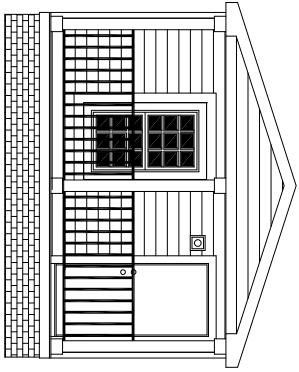
6'-0"



S-5662F - CLASSIC OAK
2-BEDROOM / 2-BATH
16 X 70 - Approx. 890 Sq. Ft. (Heated)
- Approx. 979 Sq. Ft. (w/ PORCH)

Date: 10/31/23

* All room dimensions include closets and square footage figures are approximate.
* Live Oak Homes reserves the right to modify product offering at any time.



FRONT ELEVATION
(SHOWN w/ OPT PORCH)