

Bedroom #4
11'-6" x 12'-7"

Bedroom #3
10'-1" x 12'-7"

Master Bedroom
19'-3" x 14'-5"

Bath #3

Bath #2

Living Room
19'-11" x 12'-7"

Kitchen

Dining Room
12'-7" x 12'-7"

Home Office
10'-0" x 12'-7"

Foyer

Mst. Bath

Utility

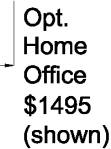
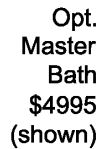
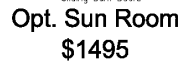
HIS

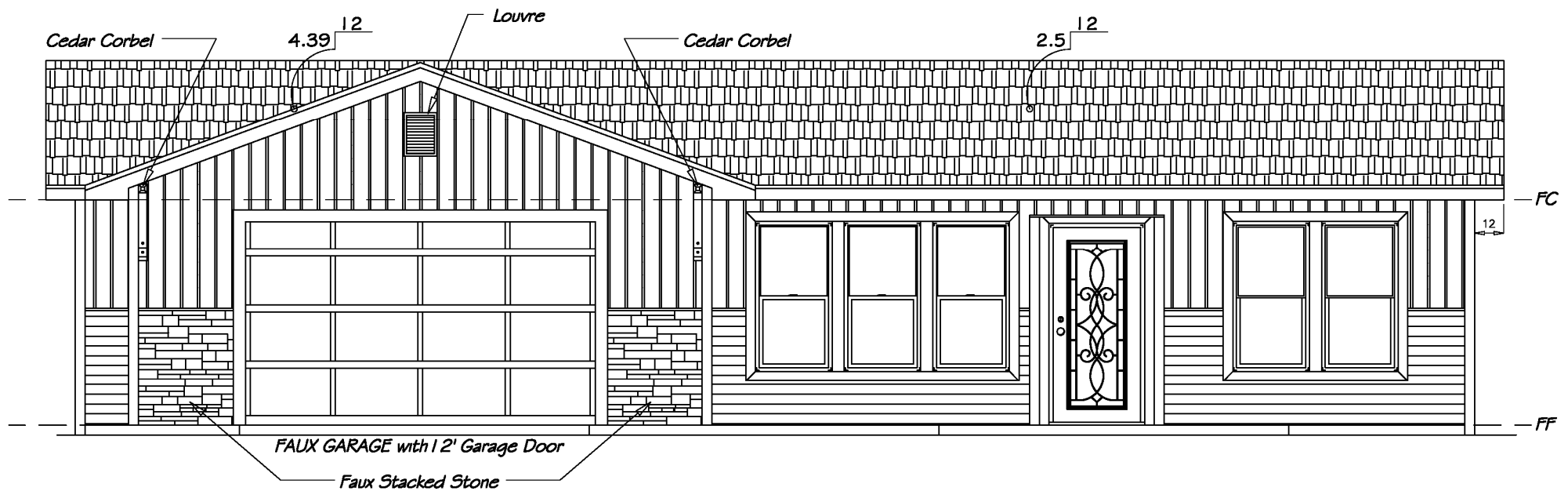
HERS

PH2820F33 DORMER

Opt. Master Bath \$4995 (shown)

Opt. Home Office \$149 (shown)





Isla II Optional Exterior