



1245
McCron
Crescent

Welcome to 1245 McCron Crescent, nestled in sought copper hills community in Newmarket! This bright semi-detached home offers 4 bedrooms, 4 washrooms, 1920 square feet plus professional finished basement, Landscaped front and back with interlock, Loads of upgrades in the sun-drenched kitchen and generously sized bedrooms. This exceptional property provides the perfect blend of comfort, functionality and charm.

For more property details, 3D Virtual & video home tours, visit us at [1245McCron.com](https://www.1245McCron.com)

Contents

Introduction	2
Property Images	3
Property Details	6
Floor Plan	12
Community Map	15









PARTICULARS of this property

Possession Date | 90 Days / TBA

Taxes | \$4,729.17 (2022)

Lot | 24.11 x 104.99 Feet

Sq. Footage | 1,920 (MPAC)
+ Basement 912 sq ft

Year Built | 2013

Bedrooms | 4

Washrooms | 4

Garage | 1 Car Garage

Driveway | Private

Parking | 3 Car Spaces

Mechanics | Forced Air, CAC

Attic Insulation | R50

Extras:

Refrigerator

Stove & Oven

Range Hood

B/I Dishwasher

Washer & Dryer

All Light Fixtures

Water Softener (Rental)

Hot Water Tank (Rental)

Furnace w/ Humidifier

Air Conditioner

Heat Recovery Ventilator

Exclusions:

Magnolia plant in backyard

Elementary Schools:

Bogart Public School

Mazo De La Rcohe Public School (French)

High Schools:

Newmarket High School

Catholic Schools:

Notre Dame Catholic School

St. Elizabeth Seton Catholic School(French)

St. Maximilian Kolbe Secondary School

Private Schools:

Pickering College (JK-Gr12)

St. Andrew's College (Gr5-Gr12 Boys)

St. Anne's School (Gr5-Gr9 Girls)



SOPHIA
SONG
416.356.9215



NICK
XU
647.502.9215



DIMITRI
KARAGIANNIS
289.500.1109



MICHAEL
KARAGIANNIS
905.960.9484

Scan QR code to see
video home tour and more!



Main Floor:

Living Room

Laminate
Smooth Ceiling
Pot Lights

Kitchen

Stainless Steel Appliances
Custom Backsplash
Quartz Countertops
Centre Island
Ceramic Floor
Smooth Ceiling
Pot Lights
Walk Out to Backyard

Dining Room

Open Concept
Laminate
Smooth Ceiling

Upper Floor:

Primary Bedroom

Engineered Wood Floor
Custom Walk-in closet
4 Piece Ensuite
Sitting area
Large Windows

Bedrooms

Engineered Wood Floor
Large Windows
Closets
4 Piece Washroom

Basement:

Laundry Room

Tiled Floor
Utility sink

Recreation Room

Pot lights
Laminate Flooring
Custom Smooth Ceiling
Built-in Selves
3 Piece Washroom

All information and statements contained herein, provided by RE/MAX Hallmark York Group Realty Ltd. regarding property for sale is from sources deemed reliable and assumed correct, but no warranty or representation is made as to the accuracy thereof and same is submitted subject to errors, omissions, changes in price, rental or other conditions, prior sale or withdrawal without notice.



HALLMARK® YORK GROUP REALTY LTD.

Brokerage, Independently Owned and Operated

RAISING THE BAR

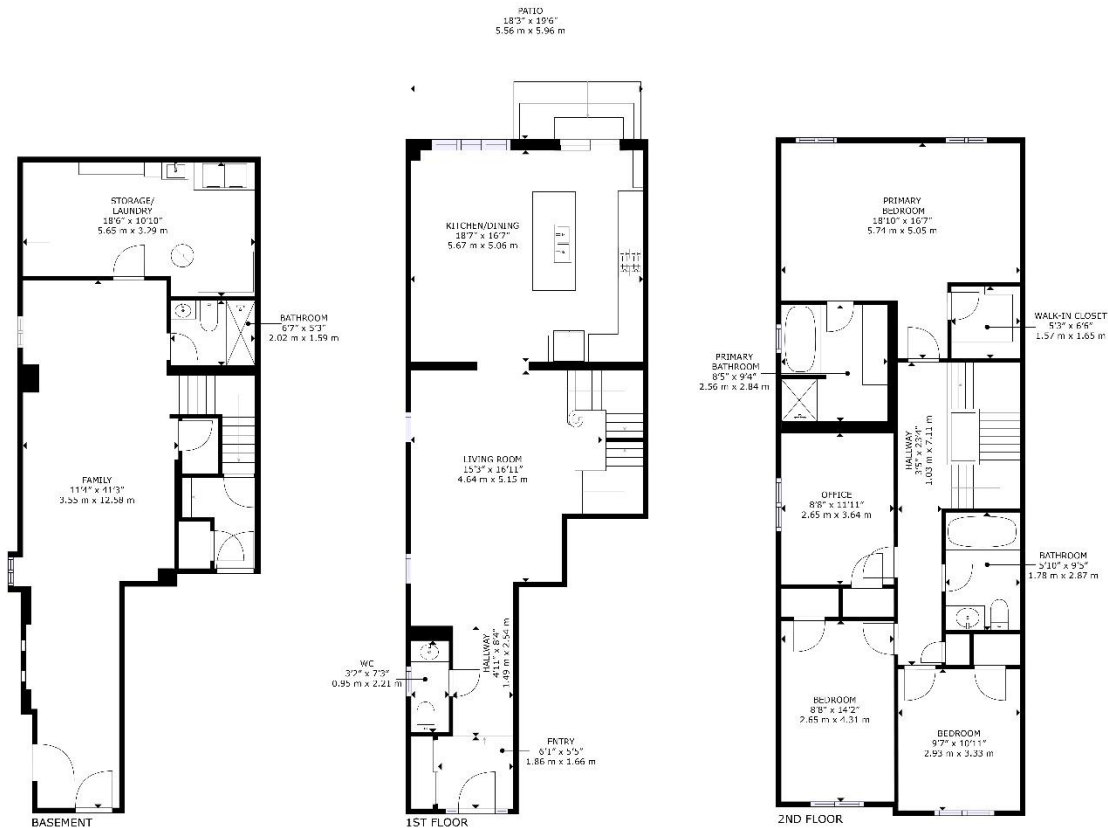








Floor Plans



SIZES AND DIMENSIONS ARE APPROXIMATE, ACTUAL MAY VARY.

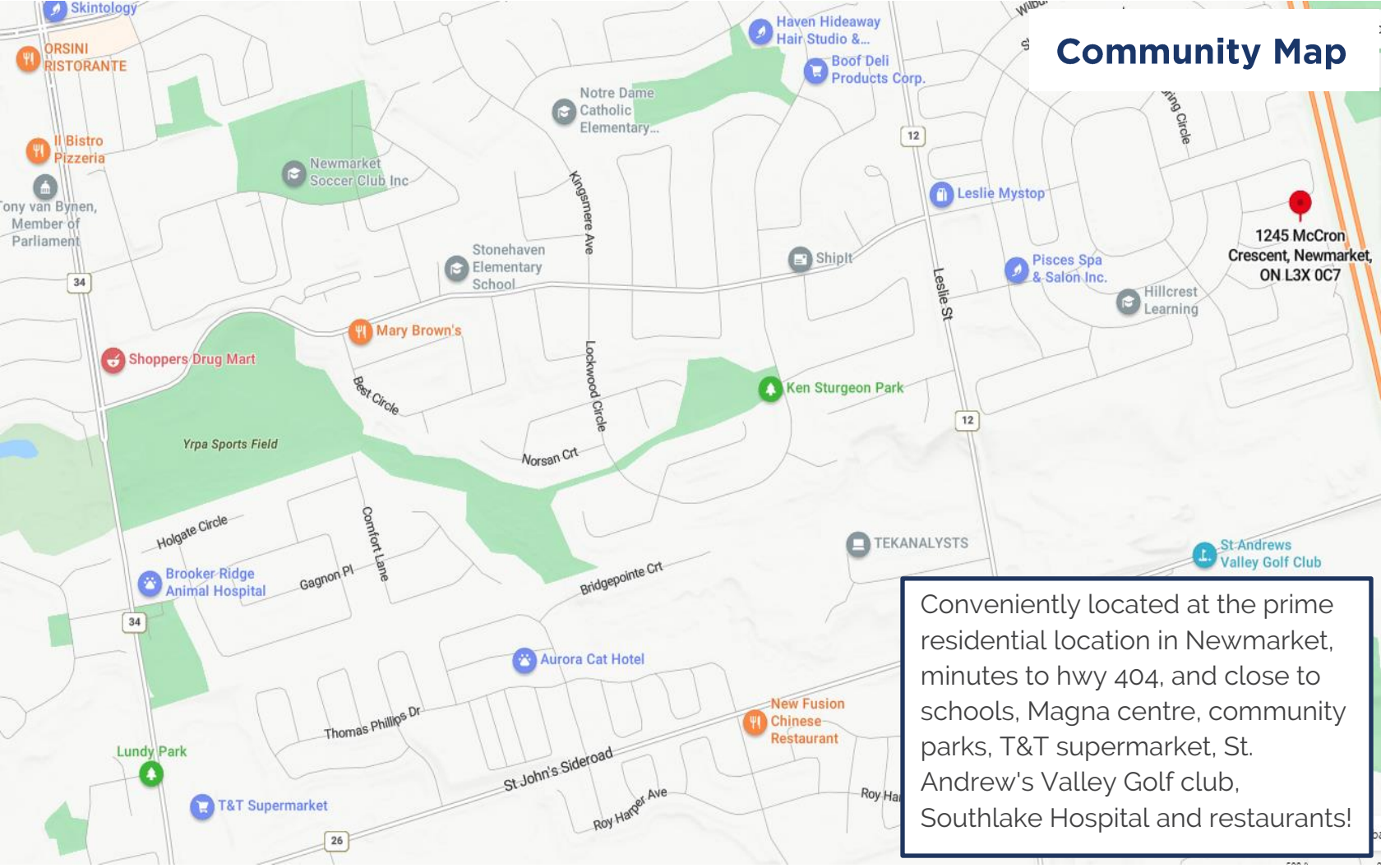


1245

1247



Community Map



1245 McCron
Crescent, Newmarket,
ON L3X 0C7

Conveniently located at the prime residential location in Newmarket, minutes to hwy 404, and close to schools, Magna centre, community parks, T&T supermarket, St. Andrew's Valley Golf club, Southlake Hospital and restaurants!



1245McCron.com

