

Unit 21 - 30
Greensborough
Village

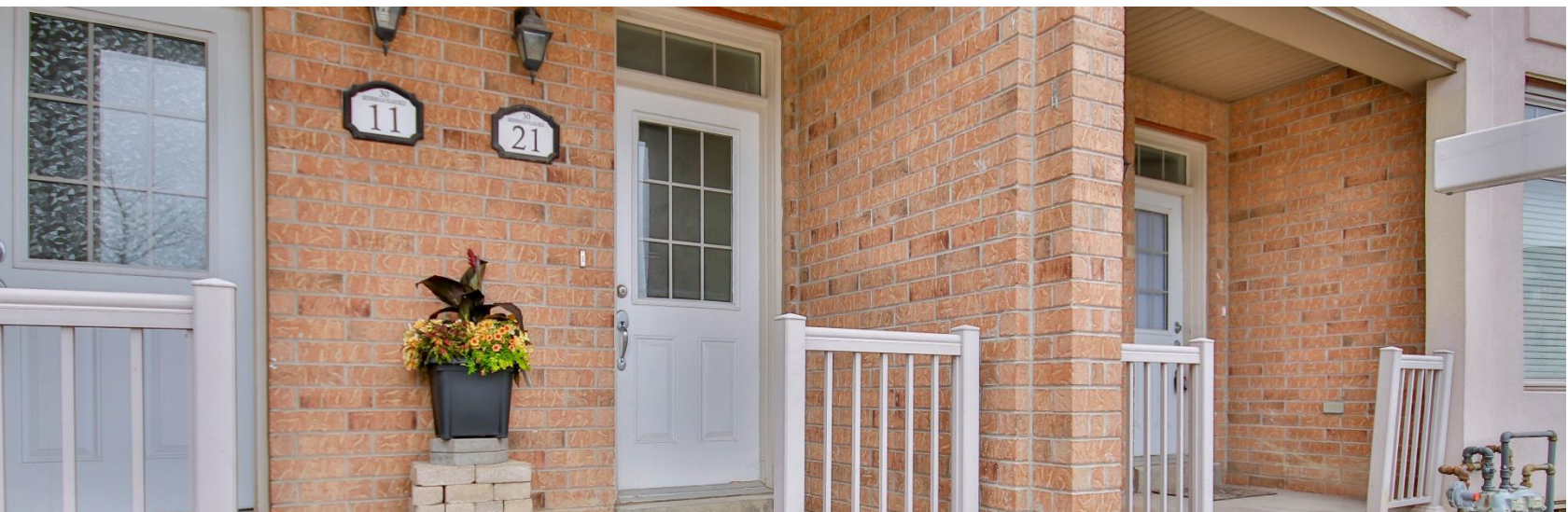


Welcome to one of the largest townhomes in the tranquil neighbourhood of Greensborough Village. With a generous 2,204 sq ft open concept space plus two balconies, south facing with unobstructed view of the town centre park, two car garage with a total of 4 car parking spaces, this two story, 4 bedroom and 3 bathroom home is the perfect place for a convenient living style while keeping you connected with nature.

For more property details, 3D Virtual & video home tours, visit us at [30greensborough.com](https://www.30greensborough.com)

Contents

Introduction	2
Property Images	3
Property Details	6
Floor Plan	11
Community Map	15









PARTICULARS of this property

Possession Date | Flexible / TBA

Taxes | \$3,449.35 (2021)

Sq. Footage | 2,204 (MPAC)

Year Built | 2008

Maintenance Fee | \$333.51

Bedrooms | 4

Washrooms | 3

Garage | 2 Car Garage

Driveway | Private Drive

Parking | 4 Car Spaces

Mechanics | Forced Air, CAC

Extras:

Fridge

Stove & Oven

Range Hood

B/I Dishwasher

Washer & Dryer

All Light Fixtures

All Window Coverings

Hot Water Tank on Rental

Elementary Schools:

Greensborough Public School

Fred Varley Public School (French)

High Schools:

Bur Oak Secondary School

Bill Hogarth Secondary School (French)

Unionville High School (Art Program)

Milliken Mills High School (IB)

Catholic Schools:

St. Julia Catholic School

St. Brother André Catholic High School

Scan QR code to see
video home tour and more!



Nick Xu

Broker,

SRS, PSA, RENE,

P.Eng, LEED AP

647-502-9215

nick@songteam.ca



Sophia Song

Sales Rep,

CLHMS, ABR,

GREEN, CSP Elite

416-356-9215

sophia@songteam.ca



Main Floor:

Living & Dining Room

Hardwood Flooring
High Ceiling
Large Windows overlooks park

Kitchen

Open Concept
Eat-in Kitchen
Cabinetry
Stainless Steel Appliances
Breakfast Area walkout to balcony

Family Room

Hardwood Flooring
Large Windows

Upper Floor:

Primary Bedroom

Broadloom
4 piece Ensuite
Walk in closet
Walkout to balcony

Bedrooms

Broadloom
Large Windows
Solid wood doors

Laundry

Easy access from bedrooms

All information and statements contained herein, provided by RE/MAX Hallmark York Group Realty Ltd. regarding property for sale is from sources deemed reliable and assumed correct, but no warranty or representation is made as to the accuracy thereof and same is submitted subject to errors, omissions, changes in price, rental or other conditions, prior sale or withdrawal without notice.



HALLMARK YORK GROUP REALTY LTD.

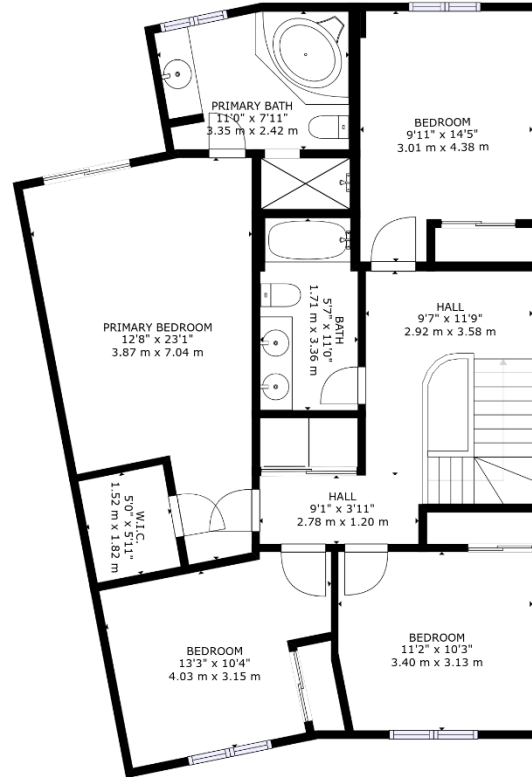
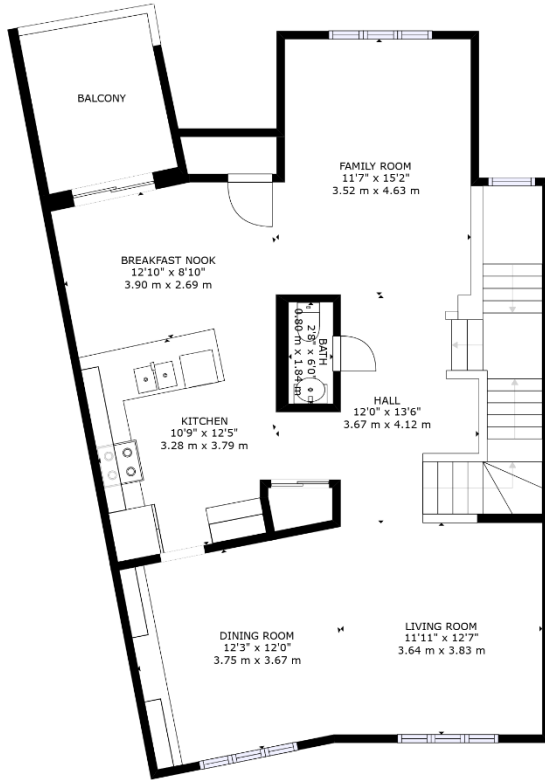
Brokerage, Independently Owned and Operated

RAISING THE BAR







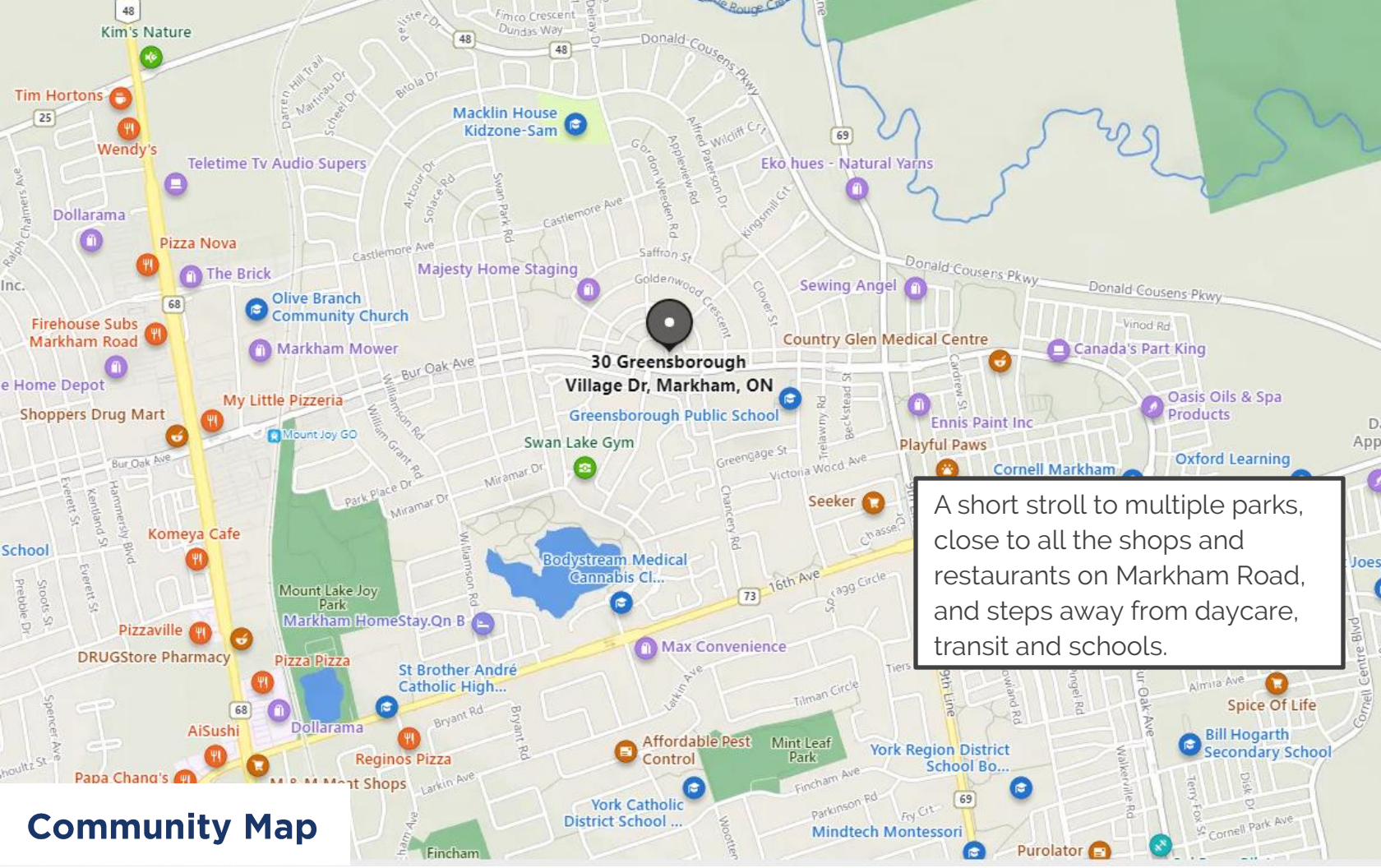


Floor Plan





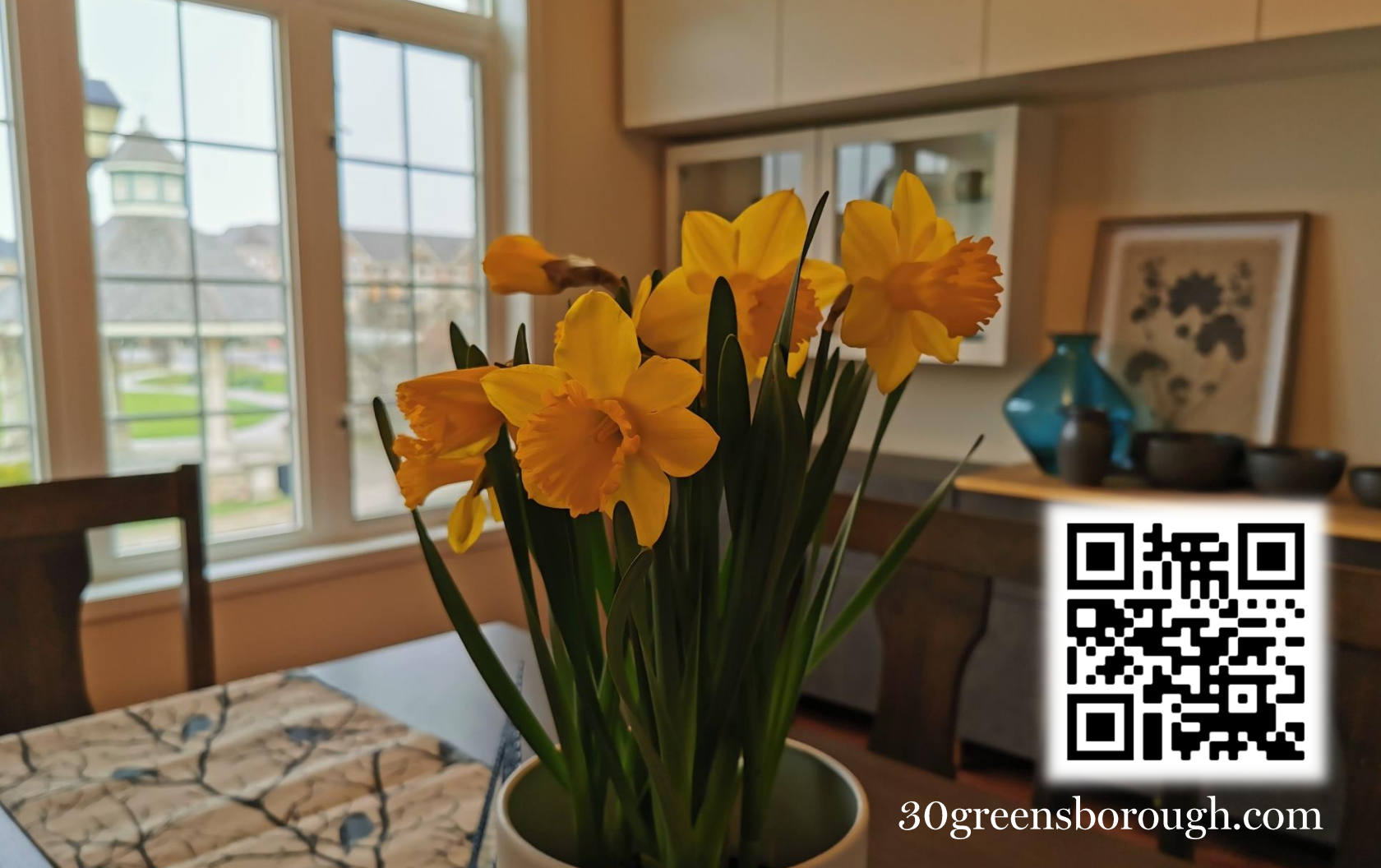




**30 Greensborough
Village Dr, Markham, ON**

A short stroll to multiple parks, close to all the shops and restaurants on Markham Road, and steps away from daycare, transit and schools.

Community Map



30greensborough.com