



THE
RE/MAX
COLLECTION®

WELCOME TO

Suite 6714

388 Yonge Street

Toronto ON

2 Bedrooms

2 Washrooms

1090 sq ft



OUR MISSION

We set and pursue the highest business, professional and ethical standards. We strive to exceed our clients' expectations. We maintain superior professional expertise and constantly work at understanding our clients' challenges from the broadest possible perspective. We do that through what we know best – the application of technology shift and management to our clients' opportunities and needs. And we strive to do it with the utmost integrity, guided by our duty to our clients and ourselves. *That is our mission.*

OUR VISION

Success to us means that our clients put us at the top of their list of realtors they want to work with. Yes, we want to be fairly compensated for the work we do, and for the years we've invested in learning and honing our disciplines. But we also recognize that financial success only occurs when we add significant value to our clients



**SONG
TEAM**

PARTNERS
IN YOUR SUCCESS



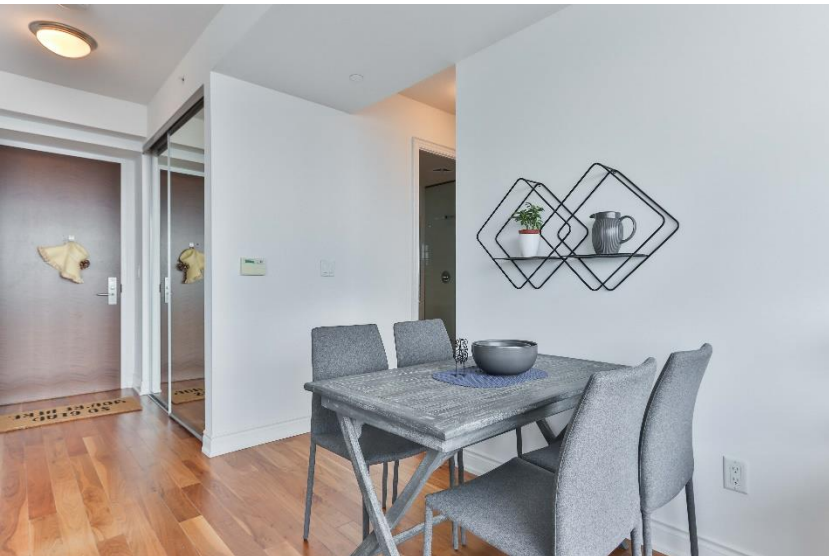
Welcome to Aura. This amazing 2-bedroom suite 6714 at 388 Yonge Street is located on the executive floor with only 7 neighbours on the same floor and dedicated high-speed elevators. The suite offers an open concept designer kitchen with a centre island & top of the line appliances, 9 feet smooth ceiling, plus a rare and magnificent panoramic view.

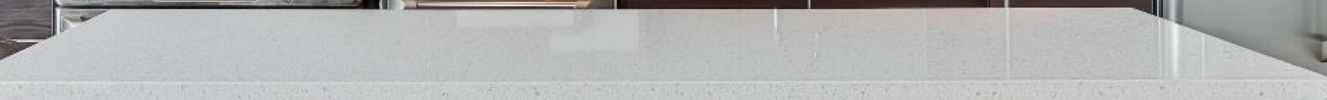
We love the elevated living at one of the tallest skyscrapers in Canada, and we hope you will too!

Contents

About Us	2
Introduction	3
Property Images	4
Community Map	9
Floor plans	11
Property Details	12

Visit us at www.388yonge.ca for more property details



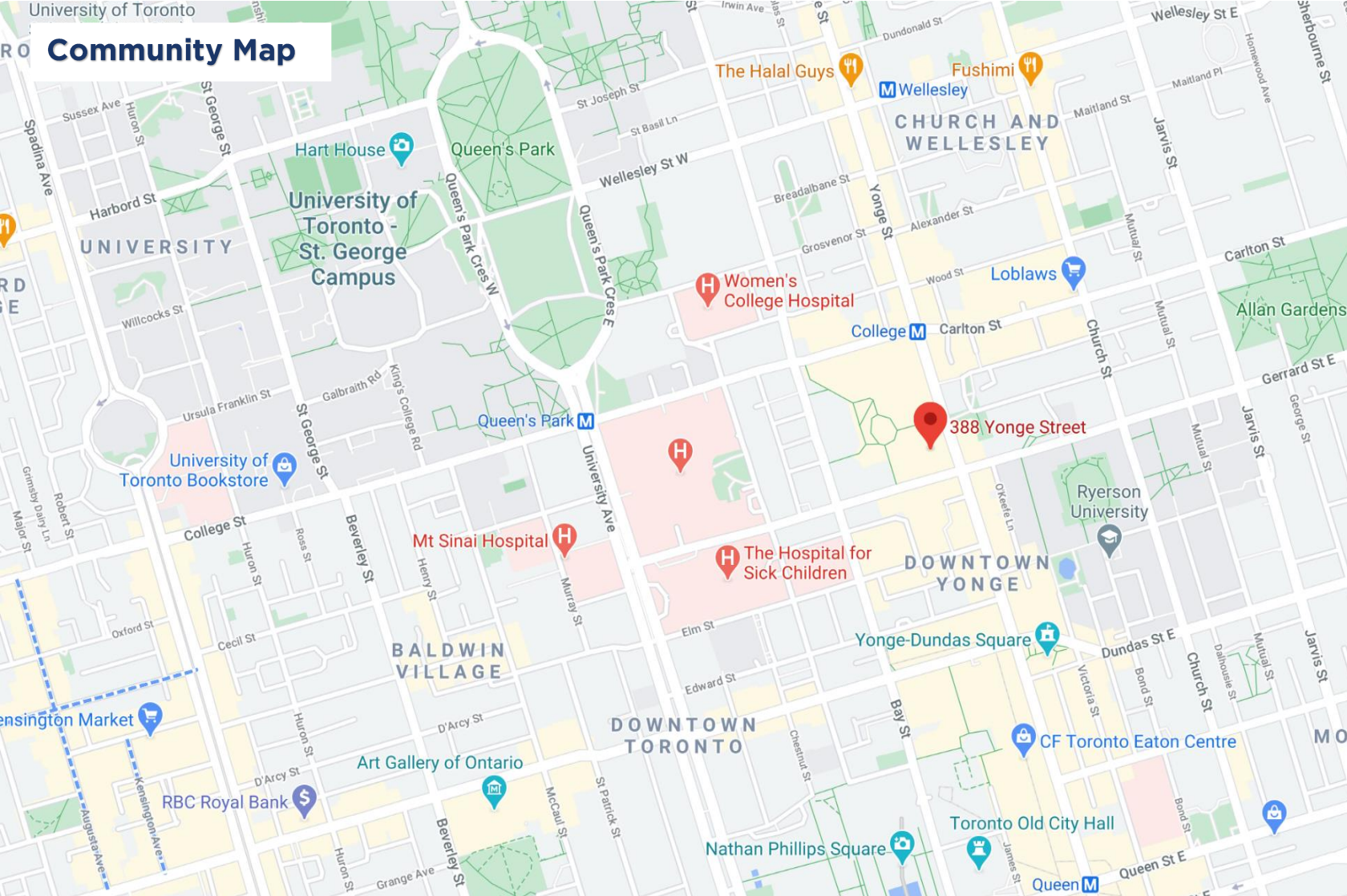






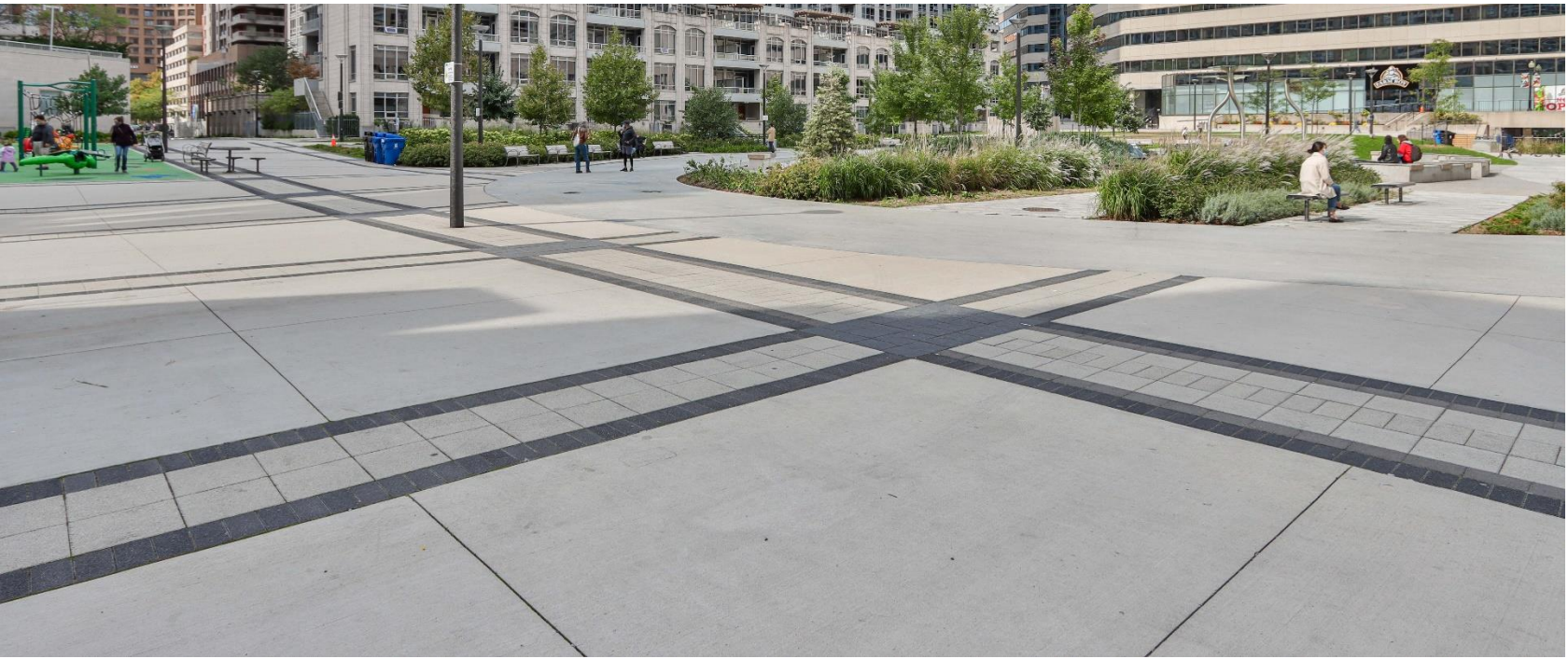


Community Map



Aura condo offers World-class amenities with direct access to The Shops at Aura with banks, shops, restaurants, and Crunch fitness – which is a state-of-the-art 40,000 sq. ft gym facility that you will have complimentary access to.

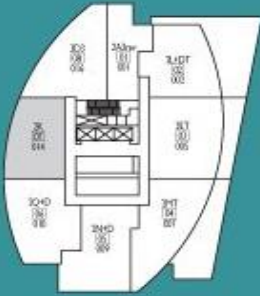
Situated in the prime downtown location, you can walk to Toronto's best Universities and Hospitals, parks, TTC, financial district, Eaton Centre, endless shopping & entertainment options.



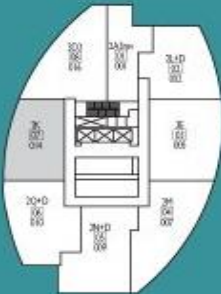


Builder Floor Plan

two bedroom

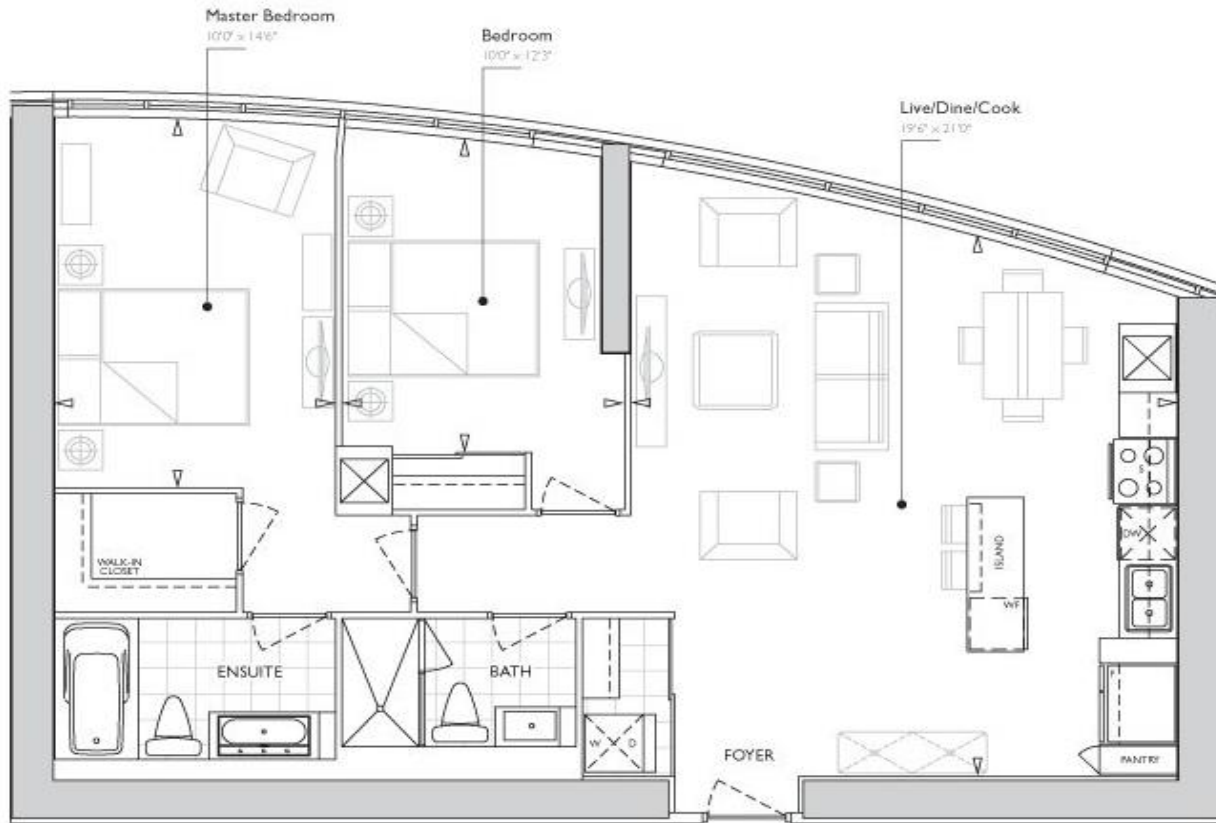


56th floor



57th - 71st floors

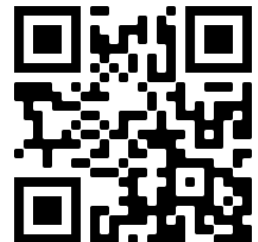
Suite: 1090 sf
Total: 1090 sf



Children's
Miracle Network



Download Full Size Plan
Here: www.388yonge.ca



PARTICULARS of this property

Possession Date | Immediate / TBA

Taxes | \$5,439.32 (2020)

Exposure | West

Sq. Footage | 1,090

Maintenance Fee | \$805.08

Year Built | 2013

Bedrooms | Two

Washrooms | Two

Parking | One Owned P2

Locker | One Owned same floor

Mechanics | Forced Air, CAC

Maintenance Fee Inclusions:

Water

CAC

Common Element

Building Insurance

Parking

Building Amenities:

Concierge and Security Guard

Games Room

Guest Suites

Gym

Party Room/Meeting Room

Roof Top Desk/Garden

Bike Storage

Living Room & Dining Room

9-Foot Ceiling

Soaring floor-to-ceiling Windows

American Walnut engineered hardwood

Master Bedroom

9-Foot Ceiling

Large Walk In Closet

4 piece ensuite

American Walnut engineered hardwood

Kitchen

Stove & Oven

Built-in Dishwasher

French Door Fridge

Wine Fridge

Hood Fan with Microwave

Laundry

Washer and Dryer

Tile flooring

Additional storage space

Second Bedroom

9-Foot Ceiling

Large Closet

American Walnut engineered hardwood

All information and statements contained herein, provided by RE/MAX Hallmark York Group Realty Ltd. regarding property for sale is from sources deemed reliable and assumed correct, but no warranty or representation is made as to the accuracy thereof and same is submitted subject to errors, omissions, changes in price, rental or other conditions, prior sale or withdrawal without notice.

Scan QR code to see
video home tour!



Nick Xu

Broker, SRS, PSA

647-502-9215

nick@songteam.ca



Sophia Song

Sales Rep, ABR, CLHMS

416-356-9215

sophia@songteam.ca



HALLMARK YORK GROUP REALTY LTD.
Brokerage, Independently Owned and Operated | RAISING THE BAR