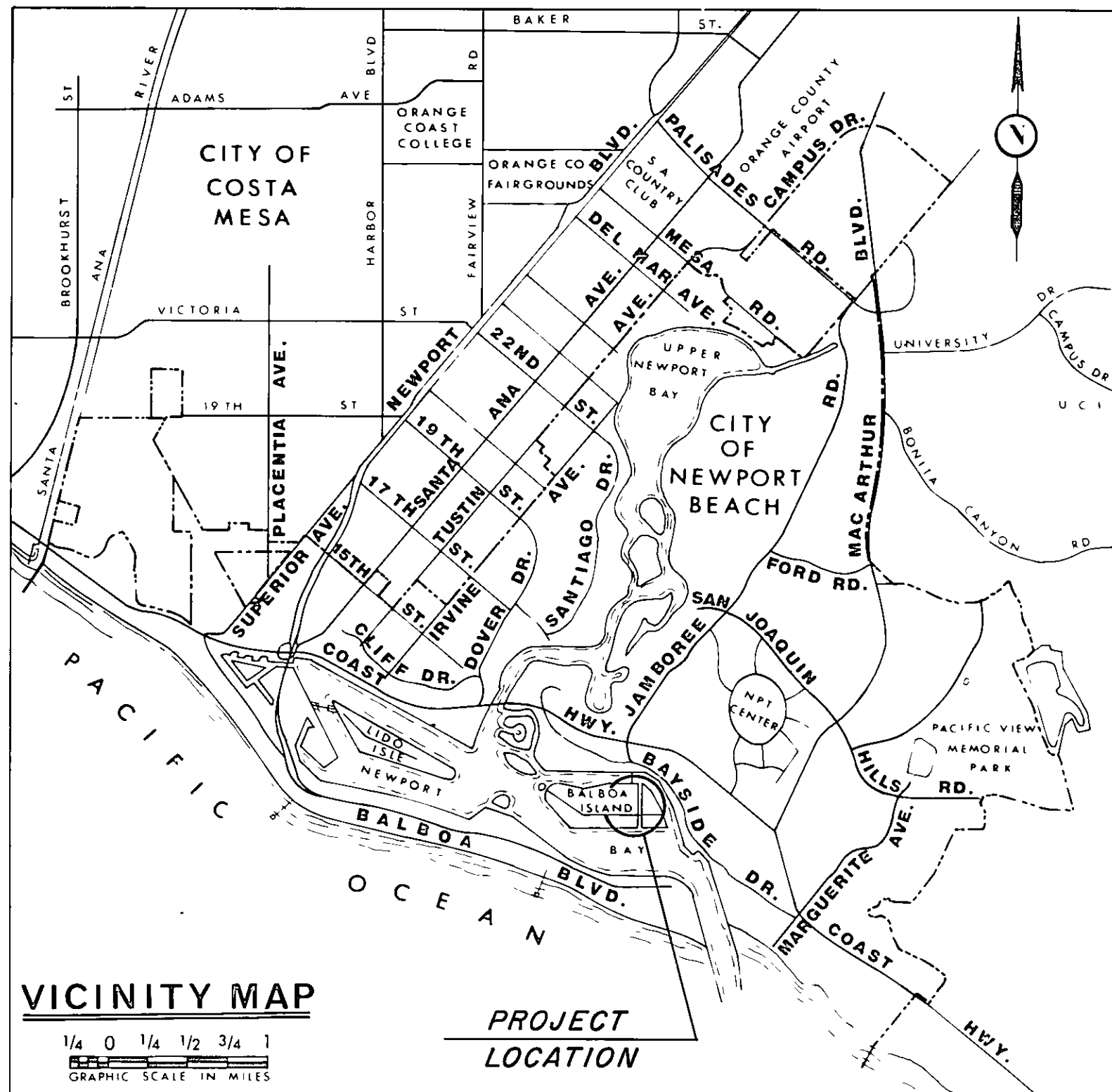


CITY OF NEWPORT BEACH PUBLIC WORKS DEPARTMENT

BALBOA AVENUE STORM DRAIN IMPROVEMENTS FROM MARINE AVENUE TO THE GRAND CANAL C-1683

GENERAL NOTES

- (1) ALL CONSTRUCTION SHALL BE IN ACCORDANCE WITH THE STANDARD SPECIFICATIONS FOR PUBLIC WORKS CONSTRUCTION (1976 EDITION), THE APPLICABLE PORTIONS OF THE "CONSTRUCTION STANDARDS AND SPECIFICATIONS" PUBLIC WORKS DEPARTMENT, CITY OF NEWPORT BEACH AND THE APPLICABLE STANDARD DRAWINGS.
- (2) EXISTING UNDERGROUND UTILITIES SHOWN ARE BASED ON AVAILABLE RECORDS, THE CONTRACTOR SHALL BE RESPONSIBLE FOR VERIFYING THE ACTUAL LOCATION AND ELEVATION IN THE FIELD.
- (3) ALL STATIONING FOR STORM DRAIN IS ON CENTERLINE OF STORM DRAIN UNLESS OTHERWISE NOTED.
- (4) ELEVATIONS SHOWN ON PLAN AND PROFILE ARE IN FEET ABOVE U.S.C. & G.S. MEAN SEA LEVEL = O.C.S. DATUM.

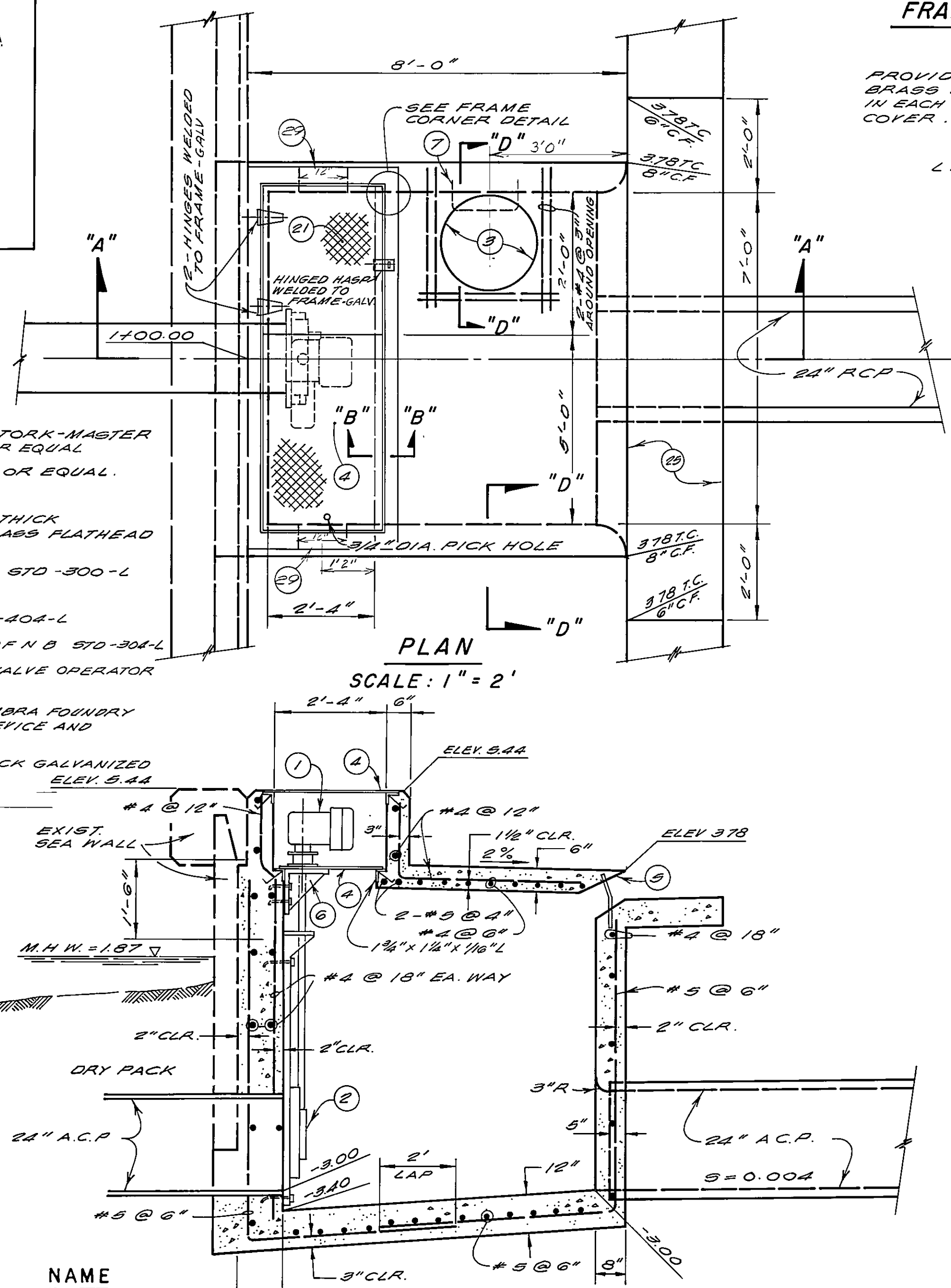


SYMBOL LEGEND

- POWER POLE
- MANHOLE
- ⊕ FIRE HYDRANT
- METER BOX
- ⊗ VALVE
- ⊖ POWER POLE ANCHOR
- △ MONUMENT
- x-x- FENCE
- ▬ BLOCK WALL
- ⊙ TREE
- ⊙ SHRUBBERY
- ▨ ASPHALT PAVEMENT
- ▨ BRICK WALK
- ▨ CONCRETE
- ▨ BUILDING
- - - - - EXISTING CONSTRUCTION
- NEW CONSTRUCTION
- CENTERLINE
- S SEWER LINE
- W WATER LINE
- G GAS LINE
- E POWER LINE
- TEL TELEPHONE LINE
- TV CABLEVISION LINE
- SP SPRINKLER SYSTEM
- ⊗ STREET LIGHT

CONSTRUCTION NOTES

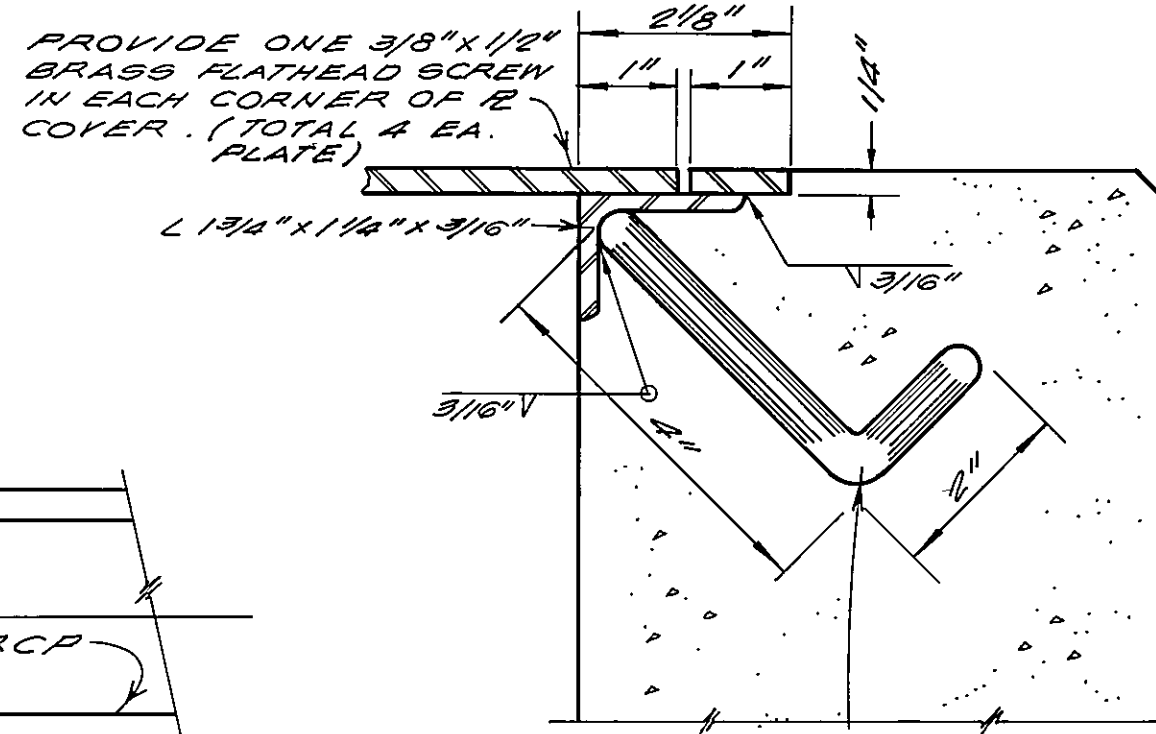
- (1) ELECTRIC VALVE OPERATOR, TORK-MASTER TME-00 W/ THRUST ADAPTOR OR EQUAL
- (2) 24" DIA. GATE, SHASTA MODEL SH OR EQUAL
- (3) CHECKERED STEEL PLATE 1/4" THICK GALVANIZED, W/ 3/8" Ø X 1/2" BRASS FLATHEAD SCREW IN EACH CORNER
- (4) CURB INLET PER CITY OF N.B. STD-300-L
- (5) STEPS PER CITY OF N.B. STD.-40A-L
- (6) LOCAL DEPRESSION PER CITY OF N.B. STD-30A-L
- (7) 1/2" THICK GALV STL BRACKET FOR VALVE OPERATOR W/ 2-1/2" BOLTS
- (8) MANHOLE FRAME AND COVER ALHAMBRA FOUNDRY #A-1231 OR EQUAL W/ LOCKING DEVICE AND LETTER "D" ON NAME PLATE
- (9) CHECKERED STEEL PLATE 1/4" THICK GALVANIZED ELEV. 5.44
- (10) INSTALL 12" X 12" GALV. STEEL FLUSH FLANGE WALL LINDER.



TIDAL STRUCTURE DETAIL

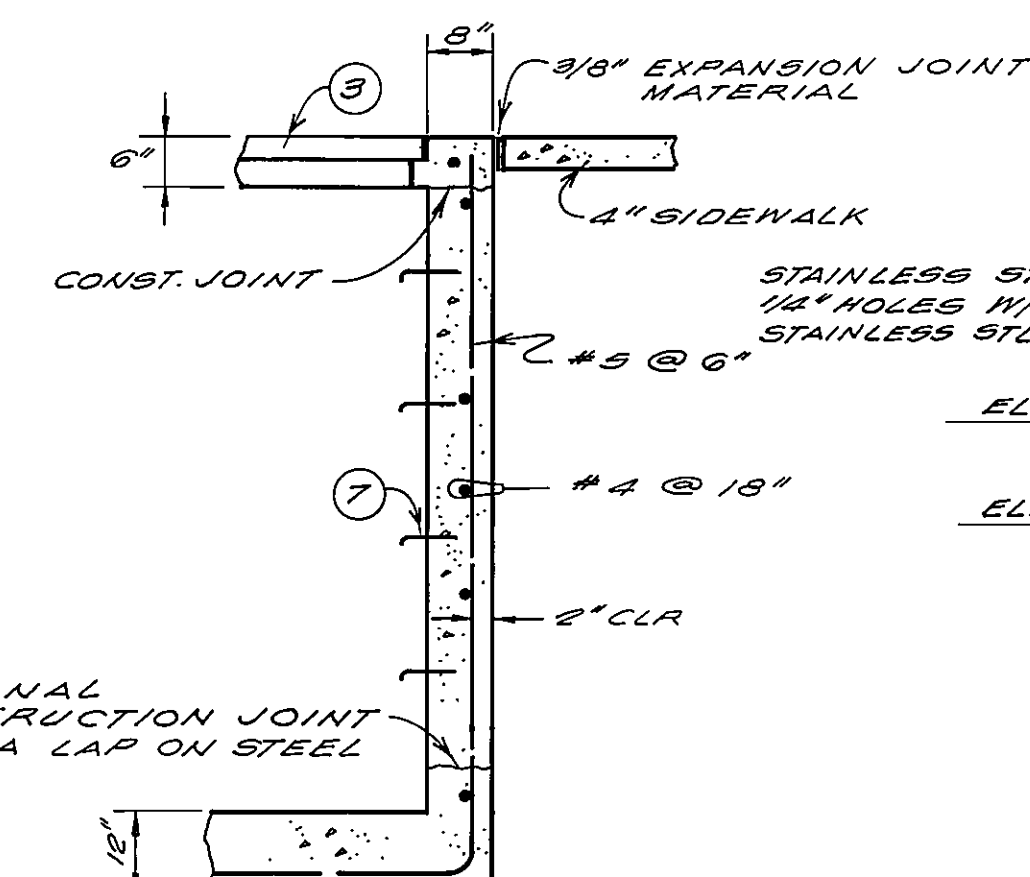
FOR LOCATION SEE SHT. 2.

FRAME CORNER DETAIL



SECTION "B"-"B"

SCALE: 1" = 2"

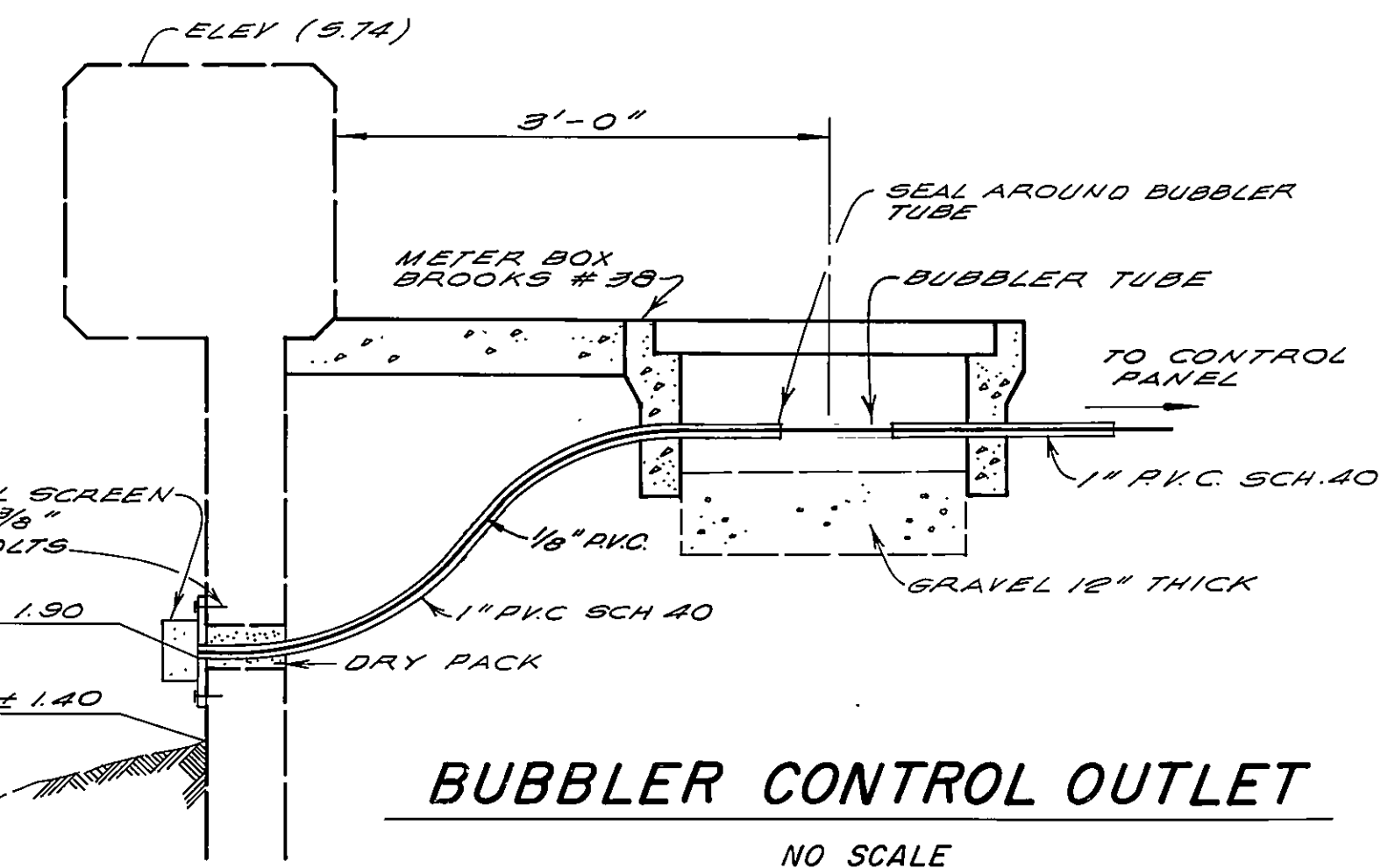


SECTION "D"-"D"

SCALE: 1" = 2"

BENCH MARK

NB3-16-70. IN THE SOUTHWEST PART OF THE BRIDGE TO BALBOA ISLAND AND MARINE AVENUE; 0.5 OF A FOOT SOUTH AND 1.3 FEET WEST OF SOUTHWEST CORNER OF THE BRIDGE, IN THE TOP OF CONCRETE RETAINING WALL OF CHANNEL.
U.S.C. & G.S. DATUM 1971 ADJ. ELEV. = 6.106



APPROVALS

CITY OF NEWPORT BEACH

APPROVED BY:

Benjamin P. Nolan MAY 27, 1976
ASS'T. PUBLIC WORKS DIRECTOR DATE
R.C.E. 12806

SIMPSON - STEPPAT
CONSULTING CIVIL ENGINEERS
PREPARED UNDER THE SUPERVISION OF:

Fritz C. Steppat 3-18-76
FRITZ C. STEPPAT DATE
R.C.E. 19249

EMERGENCY TELEPHONE NUMBERS

AGENCY	NUMBER
SOUTHERN CALIFORNIA GAS COMPANY	634-0211
SOUTHERN CALIFORNIA EDISON COMPANY	835-3833
PACIFIC TELEPHONE COMPANY	546-7130
CITY OF NEWPORT BEACH (SEWER & WATER)	640-2221

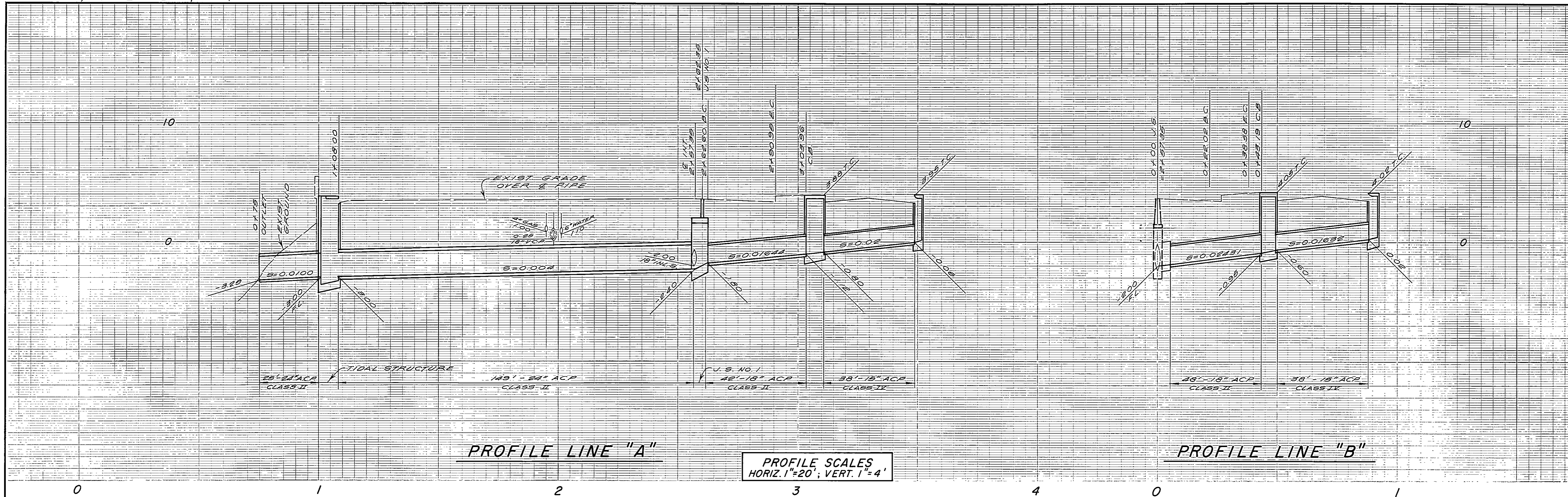
NAME
MR. ANDERSON
MR. KIRSCH
MS. KASHEN
MR. PHILLIPS

C-1683
D-5016-S
SHT. 1 OF 3

SS.# 6327

SHT. 1 OF 3
D-5016-S

MSL DATUM ?



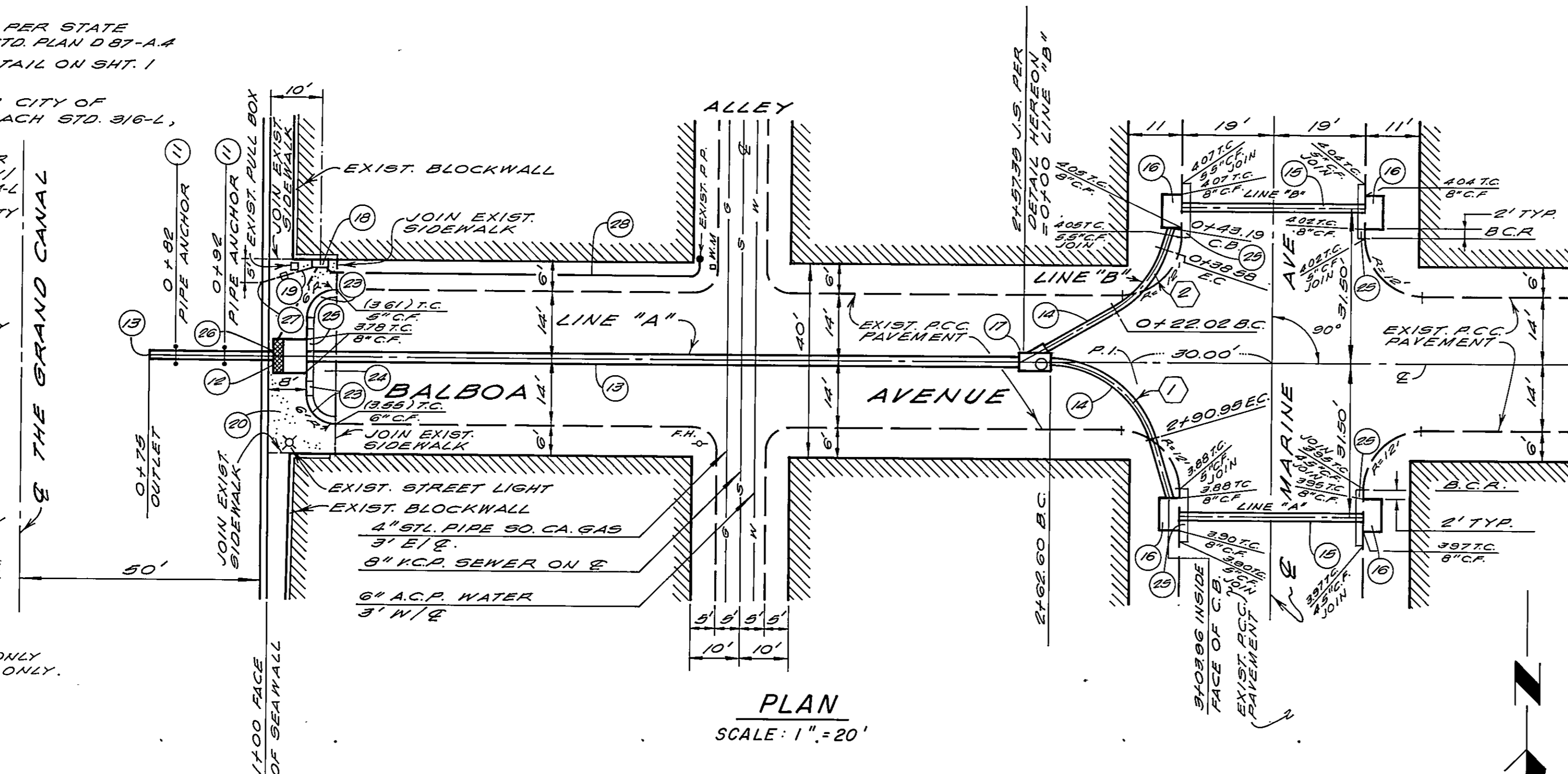
PROFILE LINE "A"

PROFILE SCALES
HORIZ. 1"=20'; VERT. 1"=4'

PROFILE LINE "B"

CONSTRUCTION NOTES

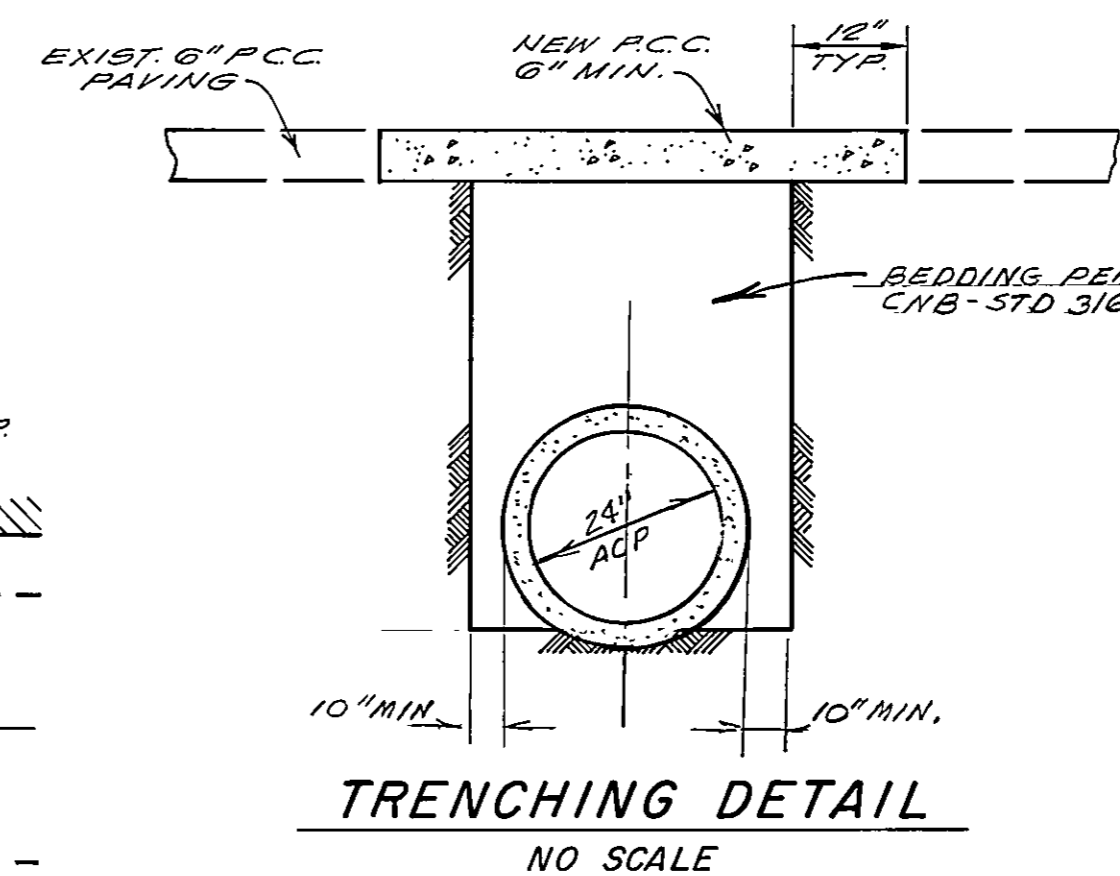
- 11 PIPE ANCHOR FOR C.M.P. PER STATE DEPT. OF TRANSPORTATION STD. PLAN D 87-A-A
- 12 TIDAL STRUCTURE PER DETAIL ON SHT. 1
- 13 24" A.C.P.
- 14 18" A.C.P. } BEDDING PER CITY OF NEWPORT BEACH STD. 316-L, CLASS "C"
- 15 15" A.C.P. }
- 16 CURB INLET TYPE OL-A PER CITY OF N.B. STD. 305-L W/ LOCAL DEPRESSION STD. 304-L
- 17 JUNCTION STRUCTURE PER CITY OF N.B. STD. 310-L AND DETAIL HEREON.
- 18 CONTROL PANEL PER DETAILS ON SHT. 5
- 19 1" P.V.C. CONDUIT TO BUBBLER CONTROL.
- 20 4" P.C.C. SIDEWALK PER CITY OF N.B. STD. 110-L.
- 21 TYPE "A" P.C.C. CURB & GUTTER PER CITY OF N.B. STD. 105-L.
- 22 6" P.C.C. PAVING
- 23 LOCAL DEPRESSION PER CITY OF N.B. STD. 304-L
- 24 REMOVE EXIST. 8" DRAIN & SEAL OPENING IN SEA WALL WITH CONCRETE.
- 25 BUBBLER CONTROL OUTLET PER DETAIL ON SHT. 1.
- 26 2 1/2" ELECTRICAL CONDUIT ONLY AND 3/4" TELEPHONE CONDUIT ONLY.



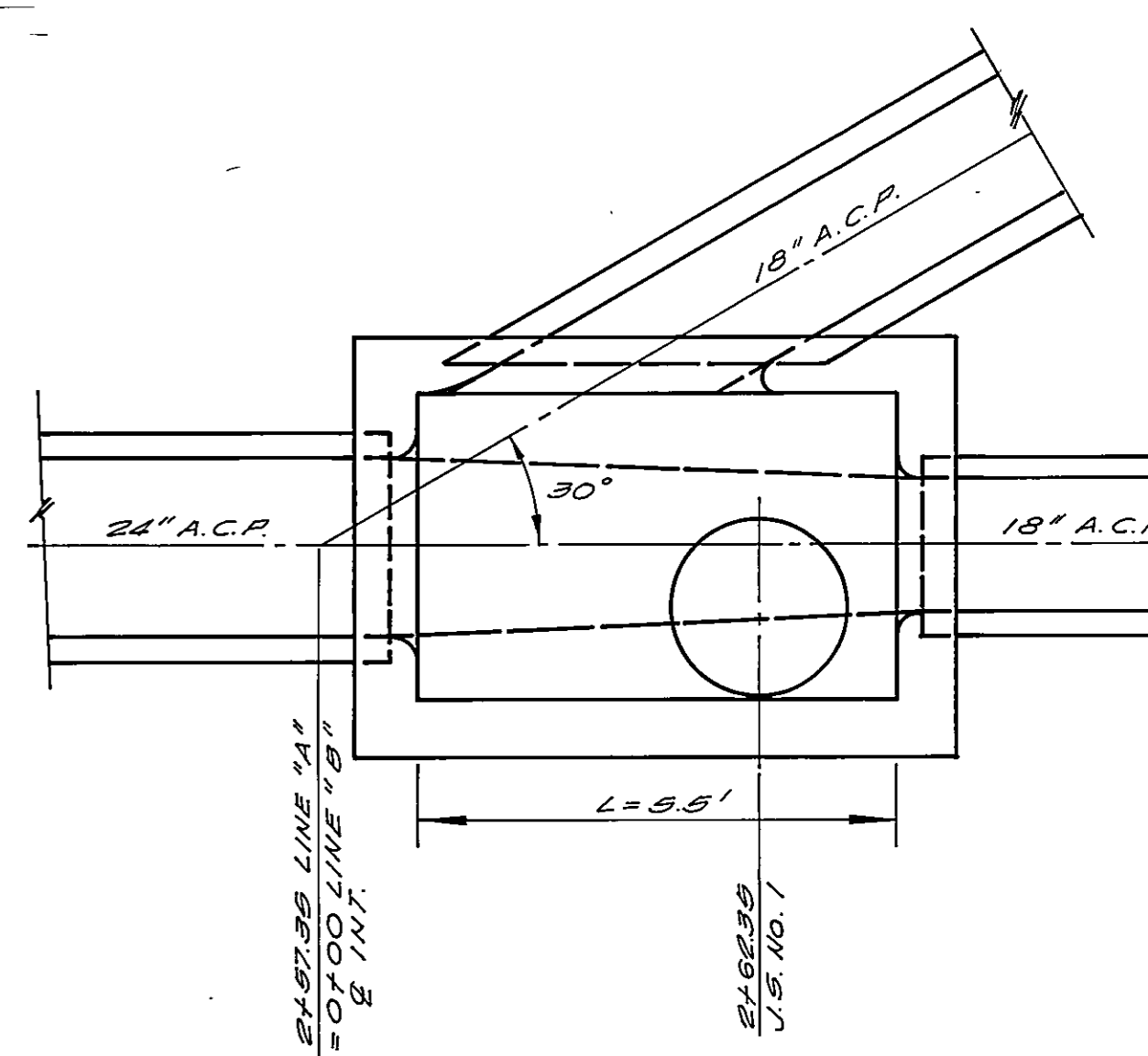
PLAN
SCALE: 1"=20'

NOTE: THE CENTERLINES OF MARINE AVE. AND BALBOA AVE. WERE ESTABLISHED BY SPLITTING THE DISTANCE BETWEEN THE EXISTING CURBS.

Q STORM DRAIN CURVE DATA				
NO.	Δ	R	L	T
1	72° 10' 32"	2250'	28.75'	16.40'
2	42° 10' 32"	2250'	16.66'	9.68'



TRENCHING DETAIL
NO SCALE



JUNCTION STRUCTURE DETAIL
SCALE 1"=2'

DATE		BY	DESCRIPTION	APPD.	DESIGNED	F.C.S.	DRAWN	E.J.T.	APPROVED	BALBOA AVENUE STORM IMPROVEMENT: MARINE AVE. TO THE GRAND
REVISIONS		CHECKED	F.C.S.	DATE	5-25-76				CITY OF NEWPORT BEACH PUBLIC WORKS DEPARTMENT	

