



SHED WEST COMMUNITY MENS SHED INC.

Friday, March 24, 2023
NEWSLITTER

Shed West Community Mens Shed Inc.
98 Brookfield Rd, Kenmore
O Box 391, Kenmore, Qld 4069
shedwest@bigpond.com
ABN 38 009 395 013

Contents

Shed News	1
Member Project of the Month	6
Social Events	7
Member Profile	8
Safety and Operations	9
Tool Tips	10
Tuesday Talks	11
Scheduled Events	12
Weekly Routine	13
Shed Contacts	14
Mens Sheds	16

I'm H-A-P-P-Y



See this month's report from the Vehicle Restoration Group to find out why.

Shed News

Shed Improvement Project - Storage Cabinets



The large stock of pre-cut ply pictured at left is for the first five of the nine storage cabinets that we are currently building. Three of the cabinets will be installed in the Blue Shed, and six cabinets in the Green Shed.

Our first three Thursday Project working days were devoted to preparing the parts by applying timber edging for the ply and routing grooves for assembly and gluing.

We are five weeks into the project now, and so far, we are right on time and on budget. There is more preparation of parts to do next week, then we will be into assembly of the drawers the week after.

Sometimes the efficiency of the team is down due to poor leadership and management, but the team's enthusiasm is beyond reproach.

Feedback from members on the prototype cabinets built last year has been very positive. A member was recently heard to say, "I was looking for some screws, and I found them straight away 😊". It was not always so 😞!

Improved storage facilities = better housekeeping = ability to find what you are looking for.

From little things, big things grow.

DA



Community Projects



Doug Nissen and Howard White - Toy Trucks

The first week of the new routine of Community Project Tuesdays in the Green Shed got off to a fine start this week. These are just a few of the skilled workers from Shed West, hard at it on a variety of projects.

There are plenty of interesting projects on the go at the moment, so come along to the shed on any Tuesday to lend a hand.



Gerald Barber – Bird Boxes



Phil Batten – Craft Table for Preschool

Tuesday Barbeque



The lads must have been hungry after their efforts last Tuesday. The burgers were polished off in a lot shorter time than the cooks needed to prepare them!

Looks like Russel Hawksford is dreaming of Land Rovers, and Mike Symes is ready for seconds!



Wood Turning Group



The simple bowl at left was used as an instruction example to demonstrate the variation in grain orientation when turning bowls (end grain – side grain – end grain – side grain).

Gavan Clarke



The wood turners have been busy developing their skills, turning goblets as pictured above.

Gavan Clarke

Which reminds me of a line from an old movie

“The pellet with the poison is in the flagon with the dragon, the vessel with the pestle has the brew that is true”

Ed.





Vehicle Restoration Group

Ollie's 60th Birthday - There are no known records showing when, if ever, Ollie was registered in Queensland. However, the chassis number suggests it was built in March 1963. That being the case, Ollie turns 60 this month. When I think of what I have done since March 1963, it's no wonder that Ollie has a few worn out parts and needs a bit of an overhaul.

Ollie was assembled in Australia by Pressed Metal Corp, Sydney. PMC assembled a range of cars and commercial vehicles from the 1930s to 1990s. From the BMC/Leyland range, this included the Austin A40/A50/A55 utilities, Austin-Healey Sprite, MGA, MGB, MG Midget, Morris J2, Land Rover, and for a while the Datsun Bluebird 1300.

Rebuild Progress - Work on refurbishing Ollie's mechanical parts continues. The rear differential has been overhauled by Diff Lapping Queensland in Kedron. It is back at the Shed for incorporation into the rear axle that we are rebuilding. Diff Lapping Queensland also assessed the front differential and advised that it was fit for another 50,000 miles as it was. We will tackle the reassembly of the front axle once the rear axle is complete.

The engine block is with the Precision Engine Reconditioning in Yamanto for a rebore, new cam bearings and replacement core plugs. It will come back to the Shed in the next few weeks for Pete to continue the engine rebuild.



Farm visit - Last Saturday, four members of the VRG (Doug, Russ, Martin and Bruce) together with Gene, a local Land Rover enthusiast travelled to Nimbin to recover another Series 2A. 'Mabel', as it is now affectionally known will be used as a parts vehicle, particularly to provide a rear tub and full-length roof for Ollie.

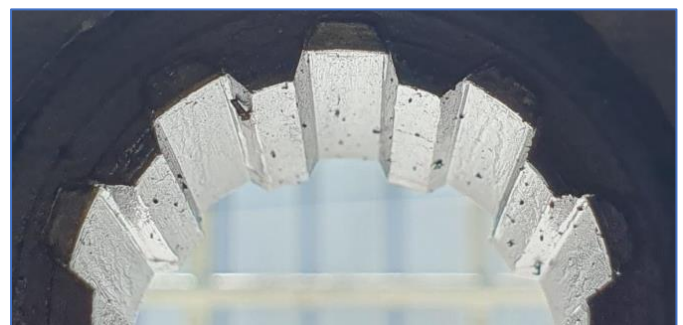
The first group left with Russ at 6am on Saturday with the Shed trailer, wheels (with air in them) and associated equipment to get Mabel out of the paddock to a location near where it could be safely loaded. Gene and Bruce followed in Gene's 1988 ex-Army Land Rover 110 and the car trailer. With the help of the local farmer and his JCB, Mabel was on the car trailer by early afternoon, and together with a few spare parts, we were back in Brisbane by Saturday evening.

The VRG is planning a quick turnaround with Mabel, removing the parts we need before on selling the rest of the vehicle

Ormiston Swap Meet – The VRG will have a site at the car swap meet at the Ormiston State School this Sunday, 26th March. We will be promoting the Shed and the opportunities it provides to the local community, as well as selling some of our range of Land Rover spare parts.

Worn Components - Following on from last month's worn shackle photos and the feedback I received from that, I have provided another two comparison photos.

This month's photos show the axle hub splines from the rear axle, with the worn hub splines (LH photo) resulting from the axle not being tightened sufficiently and a comparatively unworn spline (RH photo).



Bruce Woodhouse



Leatherwork Group

The whole group have again been busy over the past month with personal projects.



John has now completed the briefcase he was working on and is now hoping to find someone who needs a briefcase. 😊



Alan is now working on moulded leather stubby coolers.



Greg completed his belt pouch last month. He has now made a cover for a Japanese saw.



Baden continues to work on a plaited leather belt

During the month we also had a sort out, tidy up and clean out of the tools and resources in the cupboard and drawers. It is amazing what you find!

Alan Ernst



Member Project of the Month

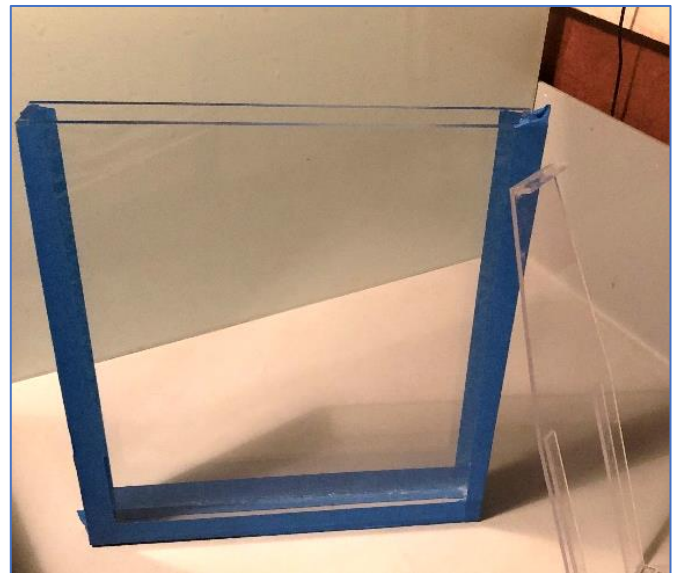
Developing Tank for a 19th Century Photographic Process

I'm a photographer who uses a 19th century process called wet plate or collodion process to create photos on tin (trophy) plate. Stu suggested I put a few words together about wet plate photography.



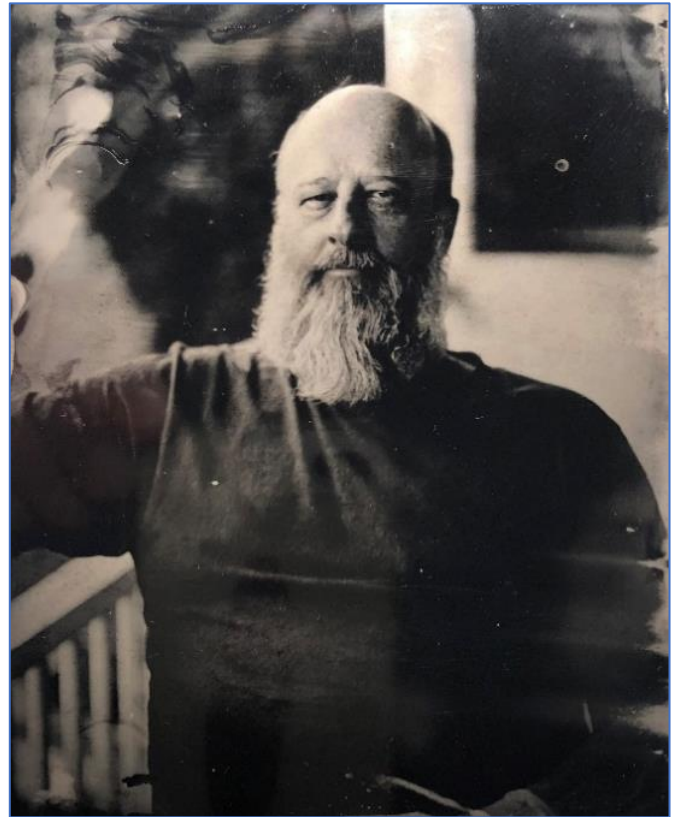
For wet plate photography I (and my friends) use large format cameras like the one pictured at left.

The wet-plate process involves coating a piece of tin plate with a solution of collodion and iodide salts. In the darkroom, the plate is immersed, for a few minutes, in a tank of silver nitrate. (This is where Stu and Ross's tank gets used.) The tin plate, (while it's still wet), is loaded into the camera where it must be exposed and developed in pyrogallic acid within 15 minutes.



I want to thank Stu Reed and Ross Monks who used the Shed West laser cutter to create the components for a developing tank. The finished tank is pictured at above.





Wet plate photographs are unusual in that warm colours (red and yellow) appear dark and cool colours (e.g., blue) appear bright or light. This photographic technique is not a common practice. Photographers use this process because of its detail and clarity. Some galleries like to exhibit these photographs because of their individuality.

Mick Lord

Social Events

Bus Trip to Maleny Wood Expo



Shed West is planning a day trip outing to the Maleny Wood Expo.

If sufficient members are interested, we will hire a bus of suitable size and travel up together.

If you are interested in coming, please get in touch with:

Gerald Barber
Social Events Coordinator
0418 763 637
gerald.barber1@gmail.com



Member Profile

Graeme Curnow (with some shed history thrown in)

Back in 2016, Graeme was the first member of Shed West to be awarded life membership. Graeme was a key figure in the founding of Shed West and served as president during the Shed's early years.

Graeme retired from his employment at Unitab in 2007 and apart from serving as a Citizen's Advocate for a man in his 60's who had suffered from Cerebral Palsy since he was 7 years of age, was looking around for an interest in his post-retirement period.

Graeme was encouraged by Rev Bev Bell, Rector of the Kenmore Anglican Church, who knew of his interest in Men's Issues, to get involved.

In Autumn 2007, Cr Margaret de Witt was organising meetings to gauge the community's interest in starting up a Men's Shed in her Ward. There were about 160 Sheds in the Southern States, but none to Graeme's knowledge in Queensland.

Graeme attended the second Community Consultation Meeting which was briefed by the co-ordinator of the successful Nambucca Heads Men's Shed on what was involved in starting and running a Shed. Various local Churches were involved, plus the local RSL Subbranch.

At the third meeting, the men who had shown sustained interest resolved to form a Steering Committee to establish a Men's Shed in the Pullenvale Ward. Mayor Campbell Newman was very supportive of Margaret's initiative, and Council advised that it would make the Green Shed available as it wanted to create a Community Centre on the redundant Council Depot site, of which the Men's Shed would form a part. The Council made \$12,000 available as seed capital.

A number of planning meetings were held at various locations, with the Scout Hall in Branton Street becoming our temporary home until the bureaucracy finally approved the lease for the Green Shed. Among the members of the original steering committee were Alan Ernst, Richard Francis, Ken Martin, Malcolm Lewis, Malcolm Johnson, with Max Lockwood (who suggested the name Shed West) and Graham Barnard, both of whom have served time as Presidents. Other early members were Don Bray, Don Atkinson, Keith Foy, Horrie Palmer and Charles Smith.

The first official meeting of Shed West was held in December 2007 in the Scout Hall where an attempt was made at making home brew – unsuccessfully, I am told. Weekly attendance was about 12 men, which gradually grew to about 30.

It was in August 2007 that Graeme was sponsored by the Council to attend the second National Conference of the Australian Men's Sheds Association in Manly, NSW, to learn about the establishment of a Shed, and what activities, etc, they could be involved in, and how the administration worked.

The Steering Committee was transformed into the Management Committee and Graeme was elected President, a position he held for 3 years.

Graeme, ably assisted by his newly formed Committee, spent a lot of time negotiating with the Council for access to the Green Shed, which was ultimately approved in October 2009.

From my records, Graeme appears to have served on our Committee until the AGM in 2014, a continuous involvement of some 7 years.

Chris Young

Thank you, Chris, for this contribution. It serves as a valuable reminder of the hard work put in by the foundation members to get Shed West up and going in the early years. At a time when member numbers and member involvement in shed activities have dropped off somewhat (yes, I had heard something about a pandemic) it should also serve as stimulus to us all to get stuck in and revitalise our shed.

Ed.



Safety and Operations

Dust, Dreaded Dust



Dust - The bane of our existence in the shed. But it need not be as bad as it is at the moment. There are things we can do to minimise the hazards of dust:

Firstly, look at the machine you are working on. Is it connected to a dust extraction system? Is it turned on? Is it working properly? Is it trapping all the dust or is it just sending it up into the air for everyone else to endure. If there are copious amounts of dust and shavings around the machine, then there is a fair chance you need to stop work and make some adjustments.

You may need to open the blast gate at the connection to the machine. You may need to adjust, secure, and seal the dust bag. If the machine is connected to one of the smaller vacuum cleaner dust collectors, you may need to empty the cleaner and shake the finer dust particles from the internal filter.

One of the most effective ways of reducing dust in the workshop is to undertake all sanding to the outside apron of the shed. That is the main reason why we have castors on the router table, drum sander and with accompanying dust extraction unit.

Work Safe. Stay safe.

Neil Rogers
Health and Safety Officer

Shed Operations Sub-Committee

The inaugural meeting of the combined supervisors and operations committees has recommended some changes to how the shed functions. These changes have been endorsed by the Management Committee and are described as follows:

- Tuesdays will now be dedicated solely for shed/community projects. We will be undertaking projects to benefit the community and projects which will enhance the operations of the shed. This means personal projects will need to be conducted on Mondays, Wednesdays and Fridays only. Shed Ops committee members will determine the viability of projects. Morning sessions only will be in operation to avoid overlap with the library meetings in the afternoon.
- Thursdays will be set aside for the shed's storage cabinet project and will utilise both morning and afternoon sessions. If we are inundated with volunteers the overflow of workers will work on the shed/community projects described above.
- Working bees will be enacted on the last Friday of every month. Work will be as per normal up until morning tea after which for just an hour and a half we will tidy up, clean up, and stack up our materials.
- Timber and plywood stored in the shed is for shed use and projects. A lot of material sourced and collected from various suppliers by a few dedicated members is making its way to personal projects. Please remember each member is to source their own materials for their own personal projects. Surplus shed materials may be purchased from the shed after asking one of the shed operations committee members.
- Maintenance and repairs are to be logged in the booklet mounted on the door of the office. Gavan and I will endeavour to make the necessary repairs once they are recorded in the booklet.

Members of the Shed Operations Sub-Committee are Neil Rogers (chair), Doug Nissen, Howard White, John Lippiat, David Brown, Gavan Clarke, Doug Wait, David Arnold, Ron Williams, Warren Cameron (also listed in Shed Contacts).

Neil Rogers
Chair

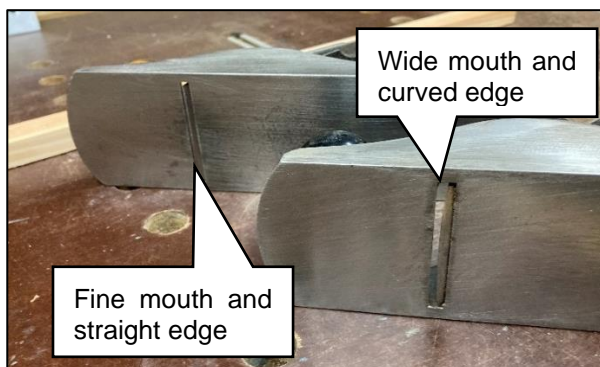


Tool Tips

Bench Planes

Almost all metal body bench planes today are derived from the designs developed by Leonard Bailey over a century ago. Stanley Bailey bench planes were made in a bewildering range of sizes from the diminutive #1 (140mm long and 0.50 kg in weight) up to the massive #8 (610 mm long and a thumping 4.4 kg). However, choosing a suitable plane for the job in hand is relatively simple:

- Larger, longer planes are better for flattening and straightening timber. The long flat sole of the plane rides over the undulations of the stock, and the blade takes off the high spots until eventually the timber is flat. For most woodworkers, a #6 fore plane or a #7 jointer plane will be the weapon of choice.
- Smaller, shorter planes are better for smoothing the surface of timber. The shorter sole allows the plane to take fine shavings off the whole surface of stock that has been previously prepared to size and flattened. The #4 smoothing plane is the most commonly used for this purpose. The #1, #2, and #3 planes are also smoothing planes. For most ham-fisted people like me they are too small to hold comfortably. They are also pretty rare (especially the #1 and #2) and consequently expensive to buy.
- A medium size plane (i.e. the #5 jack plane) is the all rounder of the range. The sole is long enough to do a fair job of flattening timber, but not too long to do an OK job of smoothing. If you can only afford one bench plane, it is the one to have, but you are probably better served having a #6 or #7 for flattening, and a #4 for smoothing.



There are two #4 planes in the picture above.

The plane on the left is set up with a fine mouth opening and the iron is ground with a straight edge. This is set up to take fine, full width shavings for smoothing.

The plane on the right is set up with a wide mouth opening and the iron is ground with a curved edge. This is set up for roughing. The curved iron and large mouth opening allow very coarse shavings to be taken and remove material quickly. Once the stock has been roughly sized and flattened with the roughing plane, a #6 or #7 can be used to true the wood, followed by the #4 for final smoothing.

For a detailed discussion of bench planes and their use, see this excellent article by Christopher Schwartz (thank you Howard White for the link).

[https://www.popularwoodworking.com/article/bench-planes-the-system-of-three/#:~:text=The%20lucky%20thing%20is%20that,than%20any%20other%20bench%20plane.&text=A%20scrub%20plane%20\(foreground\)%20is,the%20guts%20of%20a%20smoother](https://www.popularwoodworking.com/article/bench-planes-the-system-of-three/#:~:text=The%20lucky%20thing%20is%20that,than%20any%20other%20bench%20plane.&text=A%20scrub%20plane%20(foreground)%20is,the%20guts%20of%20a%20smoother)

Patrick's Blood and Gore gives a good rundown on the full range and history of Stanley-Bailey bench planes:

[The Superior Works - Patrick's Blood & Gore: Planes #1 - #8 \(supertool.com\)](http://supertool.com)

DA



Tuesday Talks

Tuesday, March 14th Paul Hobbs - Caring Cuisine

Earlier this month we recently had a very interesting talk given by Paul Hobbs from Caring Cuisine (*previously known as Meals-on-Wheels*). Caring Cuisine is building on its 50-year legacy of supporting clients and families in the local Kenmore community with meals delivered by volunteers anywhere in Brisbane – creating genuine social interaction and welfare checks as part of their service.



For anybody considering this service, their chef-prepared meals are cooked daily with clients able to choose from three main meal options. In addition, Caring Cuisine offers other menu items such as soup, dessert, fresh fruit and a range of sandwich options for clients wanting more options.

Caring Cuisine welcomes anybody willing to help prepare and distribute meals as a volunteer. If you are interested, please phone their volunteering Hotline on 0422-020-747, or email services@caringcuisine.org.au.

Mike Symes



Scheduled Events

Date	Start Time	Finish Time	Event	Venue
Friday, March 24			NEWSLITTER publication	
Tuesday, April 4	2:00 PM	3:30pm	Guest Speaker - Josh Campbell Bodytrack Exercise Physiology	Kenmore Library meeting room
Tuesday, April 11	2:00 PM	3:30pm	Guest Speaker - Luis Cruz Chile Landscapes	Kenmore Library meeting room
Wednesday, April 12	9:00 AM	11:00 AM	Operations Subcommittee Meeting	Donga behind Shed
Tuesday, April 18	12:00 PM	2:00 PM	Barbecue at the Shed	Green Shed
Wednesday, April 19	9:00 AM	12:00 PM	Management Committee Meeting	Kenmore Library meeting room
Friday, April 28			NEWSLITTER publication	
Saturday, April 29	8:30 AM	4:00 PM	Maleny Wood EXPO	Maleny Showgrounds
Monday, May 1	8:30 AM	4:00 PM	Maleny Wood EXPO	Maleny Showgrounds
Tuesday, May 2	2:00 PM	3:30pm	Guest Speaker - Darryl Holden Aussie Dambusters	Kenmore Library meeting room
Tuesday, May 9	2:00 PM	3:30pm	Guest Speaker - Phil Castle (Shed) Who really killed JFK	Kenmore Library meeting room
Wednesday, May 10	9:00 AM	11:00 AM	Operations Subcommittee Meeting	Donga behind Shed
Tuesday, May 16	12:00 PM	2:00 PM	Barbecue at the Shed	Green Shed
Wednesday, May 17	9:00 AM	12:00 PM	Management Committee Meeting	Kenmore Library meeting room
Friday, May 26			NEWSLITTER publication	
Tuesday, June 6	2:00 PM	3:30pm	Guest Speaker - Sandra Lewis Aged Care Client Satisfaction Survey	Kenmore Library meeting room
Tuesday, June 13	2:00 PM	3:30pm	Guest Speaker - Karen Coggan Home Guardian	Kenmore Library meeting room
Wednesday, June 14	9:00 AM	11:00 AM	Operations Subcommittee Meeting	Donga behind Shed
Tuesday, June 20	12:00 PM	2:00 PM	Barbecue at the Shed	Green Shed
Wednesday, June 21	9:00 AM	12:00 PM	Management Committee Meeting	Kenmore Library meeting room
Friday, June 30			NEWSLITTER publication	



Weekly Routine

Date	Start Time	Finish Time	Event	Venue
Monday	9:00 AM	12:00 PM	500 cards	Building behind the Green Shed
Monday	1:30 PM	4:30 PM	Leather work	Blue Shed
Tuesday	8:30 AM	12:00 PM	Community Projects	Green Shed
Tuesday	2:00 PM	3:30 PM	Guest Speaker Program 1st, 2nd Tuesday each month See scheduled events for details	Kenmore Library
Tuesday	12:00 PM	2:00 PM	Monthly barbecue 3rd Tuesday each month	Green shed
Wednesday	9:00 AM	11:00 AM	Operations Subcommittee Meeting 2nd Wednesday of each month (unless scheduled otherwise)	Donga behind Shed
Wednesday	9:00 AM	12:00 PM	Management Committee Meeting 3rd Wednesday of each month (unless scheduled otherwise)	Kenmore Library meeting room
Thursday	8:30 AM	4:30 PM	Shed Improvement Projects	Green Shed
Thursday	9:00 AM	12:00 PM	Pyrography, community projects, good fellowship, and solving the problems of the world	Blue Shed
Friday	7:30 AM		<i>NEWSLITTER</i> publication Friday following the 4th Wednesday of each month	Your morning paper, delivered for breakfast
Friday	9:00 AM	12:00 PM	Computing	Building behind the Green Shed
Friday	1:30 PM	4:30 PM	Woodturning Group	Green Shed
Monday, Wednesday, Friday	8:30 AM	12:00 PM	General woodworking and community projects	Green Shed
Monday - Friday	8:30 AM	12:00 PM	Vehicle restoration	Metalworking bay



Shed Contacts

Position	First Name	Surname	Phone	eMail / web
Management Committee	-			
President	Phil	Batten	0418 715 004	Shedwest.President@gmail.com
Vice President	Mike	Symes	0406 183 431	Shedwest.Pres@gmail.com
Secretary	Jim	Watters	0414 643 639	Shedwest.Sec@gmail.com
Treasurer	Shyam	Verma	0412 669 565	Shedwest.Treas@gmail.com
Committee	Ian	Boudry	0487 420 433	iboudry@gmail.com
	Neil	Rogers	0439 444 018	neiltrogers@optusnet.com.au
	Gerald	Barber	0418 763 637	gerald.barber1@gmail.com
	Gavan	Clarke	0427 171 041	gavan@seehills.net
	Doug	Wait	0418 721 472	dwait@bigpond.net.au
	David	Arnold	0477 300 237	arnoldda@optusnet.com.au
	Stuart	Reed	0404 008 625	stu.reed@outlook.com
	-			
Shed Ops Subcommittee	Neil	Rogers	0439 444 018	neiltrogers@optusnet.com.au
	Doug	Nissen	0412 324 023	dougness@tpg.com.au
	Howard	White	0404 936 462	howpen@tpg.com.au
	John	Lippiatt	0407 574 745	jelippiatt@gmail.com
	Ron	Williams	0479 084 056	chrisronwill@hotmail.com
	David	Brown	0421 594 362	dbrown55@bigpond.com
	Warren	Cameron	0400 006 046	wm.cameron@bigpond.com
	Gavan	Clarke	0427 171 041	gavan@seehills.net
	Doug	Wait	0418 721 472	dwait@bigpond.net.au
	David	Arnold	0477 300 237	arnoldda@optusnet.com.au
	-			
	-			
Re-Development Subcommittee	Mike	Symes	0406 183 431	Shedwest.Pres@gmail.com
	Gerald	Barber	0418 763 637	gerald.barber1@gmail.com
	Chris	Young	0418 794 093	cgyoung@powerup.com.au
	Neil	Rogers	0439 444 018	neiltrogers@optusnet.com.au
	-			
	-			
Shed Supervisors	Neil	Rogers	0439 444 018	neiltrogers@optusnet.com.au
	Gerald	Barber	0418 763 637	gerald.barber1@gmail.com
	David	Brown	0421 594 362	dbrown55@bigpond.com
	Warren	Cameron	0400 006 046	wm.cameron@bigpond.com
	Gavan	Clarke	0427 171 041	gavan@seehills.net
	Alan	Ernst	0408 769 576	ernsts@bigpond.net.au
	Richard	Francis	0409 647 108	rwfran@bigpond.net.au
	Geoff	Haigh	-	big_jude@hotmail.com
	John	Lippiatt	0407 574 745	jelippiatt@gmail.com
	Doug	Wait	0418 721 472	dwait@bigpond.net.au
	Trevor	Ward	0408 678 134	t_j_ward@hotmail.com
	Ron	Williams	0479 084 056	chrisronwill@hotmail.com
	David	Arnold	0477 300 237	arnoldda@optusnet.com.au
	-			



Position	First Name	Surname	Phone	eMail / web
Vehicle Restoration Group Subcommittee	Doug	Wait	0418 721 472	dwait@bigpond.net.au
	Bruce	Woodhouse	0400 815 593	bmwood@bigpond.net.au
	Gerald	Barber	0418 763 637	gerald.barber1@gmail.com
	-			
Special Roles	-			
Shed Office	Malcolm	Douglas	3878 2825	shedwest@bigpond.com https://shedwest.com/
Welfare Officer & Membership Secretary	Ian	Boudry	0487 420 433	iboudry@gmail.com
Shed Safety Officer	Neil	Rogers	0439 444 018	neiltrogers@optusnet.com.au
Induction Training	David	Brown	0421 594 362	dbrown55@bigpond.com
Maintenance Coordinator	Gavan	Clarke	0427 171 041	gavan@seehills.net
Community Projects	-			
Blue Shed Coordinator	Warren	Cameron	0400 006 046	wm.cameron@bigpond.com
Guest Speaker Program and Library Contact	Chris	Wright	0409 278 439	chrisjoan72@yahoo.com.au
Afternoon Tea Coordinator (Guest speaker Tuesdays)	Bob	Ada	0408 768 187	rada8858@bigpond.net.au
Shed Barbeque Coordinator (3rd Tuesdays)	Peter	Nisbet	0417 319 373	jnisbet@bigpond.net.au
Social Events Coordinator	Gerald	Barber	0418 763 637	gerald.barber1@gmail.com
Trotec Laser Coordinator	Ross	Monks	0407 032 282	ross@rossmonks.com
3D Printer Coordinator	Jim	Watters	0414 643 639	jjwatters@gmail.com
CNC Router Coordinator	Neil	Rogers	0439 444 018	neiltrogers@optusnet.com.au
Auditor	Tom	Usher	0435 119 992	tomusher197@gmail.com
IT Consultant / Web Site	Ray	Johnson	-	pamray19@tpg.com.au
Shed Trailer Coordinator	Phil	Batten	0418 715 004	phil.liz.batten@bigpond.com
Newsletter Editor	David	Arnold	0477 300 237	arnoldda@optusnet.com.au
	-			
	-			
Special Interest Groups	-			
Leatherwork	Alan	Ernst	0408 769 576	ernsts@bigpond.net.au
Wood Turning	Gavan	Clarke	0427 171 041	gavan@seehills.net
	-			
	-			



Mens Sheds

Men's Sheds	Address	eMail / web
Bellbowrie Men's Shed	55 Priors Pocket Rd Moggill QLD 4070	FaceBook: Bellbowrie Mens Shed
Indooroopilly Men's Shed	60 A Stamford Rd Indooroopilly QLD 4068	http://www.indroshed.org.au/
Centenary Suburbs Men's Shed	125 Monier Road Seventeen Mile Rocks QLD 4073	http://www.csms.org.au
Oxley Men's Shed	18 California Rd Oxley QLD 4075	FaceBook: Oxley Mens Shed
Ashgrove – The Gap Men's Shed	98 Yoorala Street The Gap QLD 4061	https://www.ashgrovetheshed.com/
Ipswich Men's Shed	34 Mining Street Bundamba	https://ipswichmensshed.org.au/ Facebook: Ipswich-Mens-Shed-Inc
Boonah Activity Shed	-	FaceBook: Boonah Activity Shed