



SHED WEST COMMUNITY MENS SHED INC.

Friday, April 29th 2022
NEWSLITTER

Shed West Community Mens Shed Inc.
98 Brookfield Rd, Kenmore
PO Box 391, Kenmore, Qld 4069
shedwest@bigpond.com
ABN 38 009 395 013

Contents

Shed News	2
From the President	6
Member Project of the Month	7
Social Events	9
Guest Speakers	10
Events around the Ridges	11
Safety and Operations	12
Tool Tips	13
Trading Post	16
Weekly Routine	17
Scheduled Events	18
Shed Contacts	19

What's the Buzz?



A fascinating *Member Project* from Terry Betteridge this month. The story of his recently completed Australian Native Beehive project started way back in 1986!

Covid Update

It has become apparent that several shed members no longer deem the Shed Protocols align with the State Government recommendations. That is a misconception. As of the 14th of April, the Queensland Government Health site states;

*“Vaccination and check-in requirements **are still in effect** for anyone visiting vulnerable settings (hospitals, disability accommodation services, residential aged care and corrective services facilities) **as well as for workers in vulnerable settings** and in high risk settings (including schools, childcare, prisons and airports).”*

The management committee reviews our official Covid Policy at each monthly meeting. The Committee has maintained that **the Shed is a site with “workers in a vulnerable setting”** with many members and/or their partners immuno-compromised.

The current policy, as published in *Newslette* on April 1st will remain in place:

- If you are feeling even slightly unwell – DO NOT GO TO THE SHED.
- Sign in on the sheet. Sign out on exiting.
- Hygiene – wash hands, disinfect tools, etc.
- Social distancing – 1.5m. Where a task requires more than one person you must both/all wear your mask.
- Face masks. To be worn at all times. They may be removed when eating and drinking.
- Face mask exemption. When wearing masks spectacles tend to fog over making clear visibility difficult to attain. This poses a definite safety risk when operating machinery. It is therefore deemed safer to remove the mask for the duration of the operation of the machinery, then reinstate the mask. <https://www.qld.gov.au/health/conditions/health-alerts/coronavirus-covid-19/current-status/public-health-directions/mandatory-masks>



SHED WEST COMMUNITY MENS SHED INC.

- The burden of ensuring the protocols are strictly adhered to falls on the designated session supervisor. Their instructions to members to follow these protocols are in the interests of the health and well-being of all and should be adhered to.
- The morning teas will continue per se, but in the event of worsening conditions these will revert to you supplying your own provisions.
- For entry to the shed, all persons must be either triple vaccinated, or be able to produce a valid medical exemption.

I sincerely wish all members stay well. Adhering to the protocols above will minimise the risks.

Regards
Neil Rogers
Health and Safety Officer

Shed News

Community Projects



This coming week will see our Shed deliver the final tables and bench seats to a local Kindergarten. Some 15 units made by up to nine Shed members, who put in a sterling effort to complete this repeat order over the last two months. A big thank you to all the members involved especially those members who have recently joined Shed West in the past year or so. Their enthusiasm for the task really impressed me!

We can now turn our attention to the other projects that have come in for the magic touch and some T L C! These include three old but much-loved Chairs. Also, a well-worn Squatters Chair that would be over 100 years old along with two timber stands to hold Staghorn Plants. A very ornate Table is also to be built by David Arnold, using select timbers from an old wardrobe. We have also quoted for other projects for which we await confirmation to proceed. You may gather from this summary that we have a very broad skill talent among our many members.

While our Men's Shed provides a valuable community Service to many local Kindergartens, Schools, Volunteer groups, Government Departments, and private households; we in turn get donations of tools, timber, etc from many local residents. We are overwhelmed by the generosity shown by some of these Donors who obviously appreciate our efforts. It's a two-way community liaison that's working well!

Doug Nissen



The marimbas for Rocklea State School are progressing nicely. RSS lost most of their musical instruments in the floods earlier this year, along with a lot of other damage.

Shed West is donating five marimbas to RSS to help the music department get on its feet again.

The Jacaranda carcasses are all made, complete with dovetail joints. The carcasses incorporate end brackets to allow the instruments to be stacked for storage.

The Blackwood keys are cut and are now to be carefully tuned under the expert eye of Graeme Corell. 😊



Blue Shed Shade Awning



The blue shed now has a pair of very attractive and functional shade awnings. Back in February the Management Committee endorsed a budget of \$3000 for this project. We were very fortunate to obtain a pair of “as-new” second hand awnings for only \$500. With a little bit of work from Neil Rogers, Phil Batten, and Ross Monks, the awnings are installed, and the folks in the shed can work and play in the shade 😊.

Wood Turning



Len Walker was busy in the Blue Shed recently turning some Huon Pine on the lathe to make another beautiful pepper grinder

Christmas Stall

Christmas is coming, and we need to start preparing now! At the April Management Committee meeting, a Christmas Stall Subcommittee was formed with Mike Symes as chair. Mike has already developed a detailed draft plan for the preparation and running of this year’s Christmas stall. The subcommittee will meet at 11:00 am on the 2nd Wednesday of each month, in the donga behind the green shed, unless advised otherwise by Mike. High on the agenda for the first meeting will be a post-mortem of last year’s stall, with a view to determining what items to focus on making this year. The call will be going out soon for members to get involved in the production of articles for the stall.

If you are able to help in any capacity, please get in touch with Mike or any of the other folks on the subcommittee (see *Shed Contacts* for the full list of subcommittee members). Ed.



Land Rover Restoration

During the past month we have had a dip in attendance, partly school holidays, partly COVID, partly illness, partly the weather. Agnes has been stripped down to the point where a decision is necessary. The chassis itself is unrepairable. Do we draw the good chassis we have from the super stash, or do we look deeper and seek a short wheelbase from the stash? The hold-up has been the weather. Access to the stash has not been feasible with the ground so boggy and the damage to the local roads. We hope to get on site very soon now, and therefore be in a position to make a prudent judgement. We have been maintaining contact with the landowner and he has been very understanding.



On the plus side, we have been proceeding with cleaning and restoring some small parts and panels. Very little has been spent, as the work has mainly been on the tools. Mike Williams has produced a replacement seat cushion. It looks great, and so the seats look set to proceed.

The workshop has been tidied and is looking better. Looking forward to May being a busier month.

As a result of the recent building maintenance done by the BCC plumbing guys there has been very little rain finding its way into the workshop of late. Thank you BCC 😊.

Doug Wait

New Members

Please welcome our new members this month

Ian Boudry

Alan Russell

Alan is interested in fishing, caravanning, woodwork, and model boat building.

Alan Corkhill

Alan's interests include bridge, walking, and reading groups. He is keen to get a book discussion group going at Shed West (see below).

Book Group

No, we don't have a book group at Shed West. But we could form one!

Alan Corkhill runs a lively fiction discussion group once every six weeks at Ashgrove - The Gap Men's Shed. He is keen to start one at Shed West on Friday afternoons, to meet every six weeks. If you are interested in participating, Alan would love to hear from you

Contact - Alan Corkhill
0450 127 270.



Leatherwork Group

This has been relatively quiet month for leatherwork at the Shed as together with the first Monday in May we have had three Monday public holidays in a row and Monday is our regular meeting day. Therefore, much of the group's work has been at home or left till we return to the Shed. Alan Ernst



The group has continued to develop our templates for use on the Laser which produces a magnificent cut out ready for stitching and finishing. Thanks to Ross, Greg is well underway in being trained on the Laser.



The latest group project is a minimalist wallet which has been very successful. It holds a couple of credit card size cards and a few dollar bills. The wallets have been made from kangaroo hide with the cards adding some rigidity. Small enough to hold the essentials and fit any pocket.

New Apple Computer

Shed West was lucky enough to receive some grant funding in the recent Round 22 of the National Shed Development Programme (NSDP). Following Management Committee approval, we are in the process of using a portion of the grant funding on a new Apple Mini Mac computer to replace the "museum piece" currently located in the Computer Room.

Shed West acknowledges the fundamentally good work undertaken by both the Australian Government's Department of Health and the Australian Men's Shed Association (AMSA) in supporting men's sheds around Australia with generous grants through the National Shed Development Programme (NSDP) – especially in the area of Men's Health and Wellbeing. Mike Symes

From the Editor

Even before I saw Terry Betteridge's fascinating article about bees, I was starting to feel the buzz. The social side of the shed is at last starting to pick up after more than two years of COVID dramas. If you can help out with the Tuesday barbeques and afternoon teas, please get in touch with Peter Nesbit (barbeques) or Bob Ada (afternoon teas).

I hope you are all as impressed as I am with the articles that people are contributing to the newsletters. Keep it up folks, you are making my job easy, the hardest part is fitting it all in!

I am always seeking fresh articles for the *Member Project*, and the *Tool Tips* sections, so please get in touch and send in your contributions! Or, if you see a likely looking character in the shed, give them a prod, or just send me their name!

David Arnold



From the President

Redevelopment of 98 Brookfield Road, Kenmore Hills

This month has certainly been interesting. You will no doubt have read not only the two ABC articles but also the more recent one in the Westside Community News and have been discussing this amongst yourselves in the shed as a direct result. There are always two sides to any disagreement, and this is no different in our situation at this point in time.

What we can say is that, right from the very start in August 2019 when Shed West was awarded the \$1.5M federally funded grant, we fully complied with all the stringent requirements associated with the Community Development Grants Program working closely with the Administrator at all times.

Whilst other organisations claim that they are entitled to a share of our \$1.5M grant, it should be remembered that Shed West purposely clarified this situation with the Grant Delegate at an early stage in the grant process in April 2020 following due process. Official notification from the Administrator clearly stated that (1) there is no intended third-party involvement and (2) the grant funding was not site specific to 98 Brookfield Road, Kenmore Hills. This has never been retracted and still remains valid now, as evidenced in writing.

It is significant to note that, all the time Shed West was the grantee, in all official correspondence, there was no reference to any other parties at all. Furthermore, at no time was Shed West asked to incorporate other entities or amend its drawings. That said, every proposal put forward by Shed West incorporated some “shared community space” but not “permanent facilities” for any other organisations.

After undertaking extensive due diligence and multiple concept drawings for a number of planning options at 98 Brookfield Road, Kenmore Hills, it became abundantly clear that site constraints, coupled with quite onerous Brisbane City Council carparking requirements, prevented any meaningful redevelopment of this complex site. On top of that, the costs associated with underground carparking, and substructure civil works, essentially meant that very little was left over for any facilities at ground level.

When Shed West received official notification from the Federal Government that the grant funding was not site specific to BCC’s site at Kenmore Hills, Shed West quite legitimately pursued another (*far superior*) flat site in Brookfield with full approval to the point of being awarded a draft Deed of Agreement.

It was at this point that Shed West experienced some unwanted political interference. Shed West’s application for a new Men’s Shed in Brookfield was effectively blocked and the management of the grant transferred to Brisbane City Council without any warning, discussion, or consultation.

We are now in a situation where Brisbane City Council’s redevelopment proposal for 98 Brookfield Road has been costed at over \$5 million. Increasing the overall scope of work to incorporate permanent facilities for both the Kenmore Bridge Club and E-Waste Connections has blown out the grant funding to the point where the Council is now seeking additional funding from the Federal Government.

Shed West will continue to liaise with both the Federal Government and Brisbane City Council to reach some kind of solution one way or another. We have a very strong case backed by official documentation and we are confident we will succeed in the end.

We will keep you all posted.

Mike Symes



Member Project of the Month

Australian Stingless Native Bees (Tetragonula Carbonaria)

My first encounter with Australian Native Bees (ANB) was when we purchased an acreage property at Pullenvale in 1986. A hive of ANB was in a hollow tree stump with the stump being approximately one metre high and 700 mm diameter. The hive entrance was approximately 300 mm above ground level, and the top of the hive could be seen and touched from the top of the hollow tree stump.

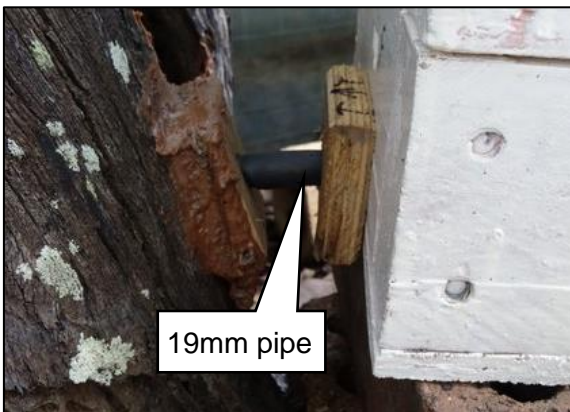
I observed bees flying in and out of the hive entrance for over 30 years. During 2007 a violent storm brought down several large branches from a Eucalypt tree 30 metres from the hive in the stump. Two hives of ANB were in the fallen branches. I cut branches containing hives into 1 metre lengths, relocated the logs with the hives to a vertical position, in shade. One hive survived the relocation. I gave that hive to a shed member during 2020 who successfully relocated the hive in the same log to his home in Kenmore.



In 2016 I duplicated the hive in the stump using the Eduction Method.

I made a box hive based on the OATH design (Original Australian Trigona Hive) designed by Dr Tim Heard.

I placed the box hive in front of the entrance to the hive in the stump and connected the entrance in the stump to the back of the new hive with a short piece of 19mm irrigation pipe.



Bees could only gain entry to the hive through the entrance of the new box hive.

Bees eventually started building comb and occupying the new hive over a period of several months.

I gave that box hive to our neighbour in December 2020 because we were moving to a smaller property in Corinda.



I agreed with our neighbour to split the box hive and made two new boxes in our shed during February 2022.

The box on the left is the new bottom box. Timber bars across the top of that box are to stop brood in the upper box from slipping down after the split.

The two boxes in the middle are the upper boxes for the hive. The three boxes on the right are a new spare hive.



A sheet of Perspex is recessed into the top of the second box with a 25 mm gap at the rear of the hive. This acts as a super to collect honey, with the Perspex allowing inspection with minimal disturbance to the hive.

Native bees produce half to one kilo of honey per year in a healthy hive.

Ron Williams assisted by providing Perspex and advising me how to cut the Perspex with clean edges.

Don Bray assisted by providing pre-cut hive sections he had made and also provided a large piece of Perspex from E Waste.



I split the original box hive in February 2022.

The split hives were left close together after the split, allowing the bees to settle before relocation.



One half of the split hive was relocated to our backyard late in the day after the split to allow most flying bees to return to one of the split hives before being relocated.

ANBs are excellent pollinators and fly approximately 500 metres from the hive.

An ANB contains one laying queen, several virgin queens and approximately 10,000 bees.

When a hive is split, the original queen will continue laying in one of the split hives. A virgin queen will mate and commence laying or the bees will raise a new queen from the existing brood in the other split hive. There is no need to locate the original queen.

Current cost of an ANB hive complete with bees in a box or log varies from \$500 to \$700 (prices obtained from City Chicks, Samford). Members wishing to obtain further information on native bees should refer to the book "The Australian Stingless Native Bee Book" by Author Dr Tim Heard. This book is available from Brisbane City Council Libraries.

I very much enjoyed working on this project in our Kenmore shed. My current storage shed is less than 2 metres square, and I have no covered area to use as a workshop. Attendance at our shed costs only \$3.00 where we gain access to a wide range of well-maintained tools, machinery and a workbench. The shed also provides the opportunity to meet other men who are always prepared to share their knowledge and experience.

Terry Betteridge



Social Events

Visit to Buderim Men's Shed - Thursday 12th May



Buderim Men's Shed have welcomed Shed West to come and visit their shed. This will be a great opportunity to network with another shed and see how they do things. Buderim is reputed to be a very well set up shed, so it should be very educational, as well as being a great social day out.

The plan is to hire a bus, leaving from Kenmore Plaza (the tavern, not Kenmore Village) at **7:00 am**.

The agenda for the day is:

- 7:00 am Depart from Kenmore Plaza. Be there early so we can depart promptly at 7:00.
- 9:15 am Morning tea at the Buderim Men's Shed
- 9:45 am Meeting room talk on Buderim Shed
- 10:00 am Tour of the shed in groups of three.
- 11:00 am Meeting room questions and answers about the shed, and talk about areas of interest, including funding/grants, shed management, health and safety, disabled, health and well-being.
- 12:00 pm Lunch
- 1:00 pm Back on the bus and depart

It is about 1.5 to 2 hours' drive to Buderim shed. Note that masks must be worn on the bus, and visitors to Buderim shed must be vaccinated.

Cost for the bus is \$40/head. Buderim Men's Shed are putting on morning tea and lunch for us. Note that we will be booking a bus with capacity to suit the numbers, so once you have booked your seat, there are **no refunds**.

We need to confirm numbers early so we can book a suitable bus. Please contact:

Phil Batten
0418 715 004
phil.liz.batten@bigpond.com

3rd Tuesday Barbeques Are Back



Barbeques on the 3rd Tuesday of the month are back on at Shed West. We will be kicking off on Tuesday 17th May.

\$7 for a burger and a beer, or soft drink.

Peter Nisbet is the organiser - **He is going to need your support**. So - If you are willing to help in any way, please get in touch with:

Peter Nisbet
0417 319 373
jinisbet@bigpond.net.au



Guest Speakers

April Roundup

April saw three very interesting presentations, commencing with Bob Walker from the Office of Fair Trading who gave us a heads up on protecting ourselves from the latest round of internet and phone scams.

Then Sarah Collins and Helen McCarthy gave us a rundown on the Remondis Energy From Waste proposal for Swanbank Power Station precinct. Inspiring - Great to see the march of technology in addressing the enormous challenges of waste disposal and recycling in a modern society.

Finally, George Hulse gave a vibrant personal account of the role of Engineers (sappers) who were required also to act as infantry in the dire situations presented during the battles of Fire Support Base Coral and Balmoral in Vietnam in 1968. These battles were considerably more complex and protracted than some of the other better-known engagements of the time. They were hardly recognised by, and reported upon, to the Australian public, owing to the political realities at that stage of the war. What was meant to be a very simple, quick roundup and mop up operation turned into a do or die mission slap in the very heart of NVA territory. Boy - What a situation!

Coming Attractions

May 3rd - David Arnold will talk about the off-shore construction of a furnace building for the Port Pirie lead smelter. This 70 m tall building was built in Shanghai and transported to South Australia in 600 tonne modules, then put together using the largest crane in the southern hemisphere. Mega movers on steroids!

May 10th - Phil Castle will tell the story behind the ill-fated Burke and Wills expedition with some typically interesting Phil Castle insights born of deep research.

May 24th - Lewis Hoffman from StrokeSafe Qld. Fresh from receiving the 2022 StrokeSafe Australia Volunteer of the Year award in Melbourne, Lewis will relate his journey as a stroke survivor, and how we might avoid the same fate. He will also talk about how to recognise and respond to a stroke in others.

June 7th - Clare Blake from QIMR Berghofer. QIMR Berghofer are doing some absolutely marvellous and cutting-edge research right here in Brisbane. Clare is a professionally trained medical communicator who will give us the guts of the latest happenings.

Afternoon Teas Are Back!!!

☕ 🏠 Afternoon Teas are back on at Shed West Guest Presentations, Kenmore Library 🍰 🧡 !!

After nearly two years, we have been cleared to reinstate our much-appreciated afternoon teas which have traditionally followed the talk on 1st, 2nd and 4th Tuesdays. Naturally, it is most important that we follow all Covid-safe protocols (physical distancing, hygiene, vaccination etc). We hope to be up and running **from Tuesday 3rd May**. However, to make it happen we need a crew of about six so that each member handles it only once per two months.

The rostered team member merely pops into Coles downstairs and procures the supplies of choice and sets it out before the talk (will be easily reimbursed). Training will be available!

Bob Ada has offered to head up a team and develop a roster.

So - we need YOU to help with this way in which Shed West can enhance our valuing and support of one another. For more information, please contact:

Chris Wright - 0409 278 439 - chris_wright2006@yahoo.com.au

or

Bob Ada - 0408 768 187 - rada8858@bigpond.net.au

Thanks for your support - I'll wear it always... 😊!!

Chris Wright



Events around the Ridges

Craft Timber Sale

Saturday 30th April – Sunday 1st May - Craft timber sale - Wight's Mountain, Samford

25 minutes Northwest of Brisbane CBD. Opening hrs 9 a.m. to 4 p.m. And if you bring beer and snags who knows.

DIY wood supplies 6 mm to 100 mm thick. 95% of my timbers have been air dried for several years. Wood workers paradise: for wood turners, box makers, spoon carvers, carvers, jewellery makers, resin works, knife makers.

Resin table slabs large and small.

Burls, Myrtle, Mallee roots and a few others. Flame She-Oak, Budgeroo and Budgeroo burl, Ring Gidgee, Huon pine, Myrtle, PNG rose wood, Conkerberry, old growth red cedar, silky oak, silver Quangdong, Queensland maple, Inland rose wood, Purple Gidgee, Crows ash, leopard wood, jacaranda and Camphor Laurel.

Black heart and plain Sassafras, pen blanks Sassafras \$1 Huon pine pen blanks \$2 and a heap more.

Small flame she oak and Budgeroo, Queensland maple, silver Guangdong logs available. South American snake wood is on special, 50% off the marked prices which were at the Maleny Wood show 2019.

Premium timbers cast into resin blanks rounds and pen planks knife scales and there's more.

Guy 0419 448 999
Dinkidi Australia
9 Springfield Court, Wights Mountain
4 kilometres from the Samford Village
Drive straight up into our back paddock

Open Gardens

A reminder that this weekend there are open gardens here in the western suburbs.

<p style="text-align: center;">Four beautiful open gardens Brisbane West 30th April & 1st May, 2022, 9.00am to 4.00pm</p>	<p style="text-align: center;">Important information</p> <ul style="list-style-type: none"> • Entry fee \$10 each, \$15 for 2 or \$20 for 3; Witty Rd Garden \$5 each (children free all gardens) • Pocket Farm Garden is wheelchair friendly • Each garden is supporting different local charities • More information: ged.dale@bigpond.net.au (Pocket Farm); bully1949@gmail.com (Sommer Garden); info@coucalsgarden.com (Coucals)
<p style="text-align: center;">Pocket Farm Garden 311 Priors Pocket Rd, Moggill</p>	<p style="text-align: center;">Witty Rd Garden 149 Witty Rd, Moggill</p>
<p style="text-align: center;">Sommer Garden 61 Viner St, Pinjarra Hills</p>	<p style="text-align: center;">Coucals of Mount Crosby 8 Belah ST, Mt Crosby</p>



Safety and Operations

Using The Bandsaw.



Another of our useful items of machinery. Don't be fooled by this somewhat passive looking machine. Like the table, panel and compound mitre saws this also has teeth that can bite. So how do we tame this beast. The following helpful **Safety Survival Strategies** should assist you in being able to count to ten using both hands.

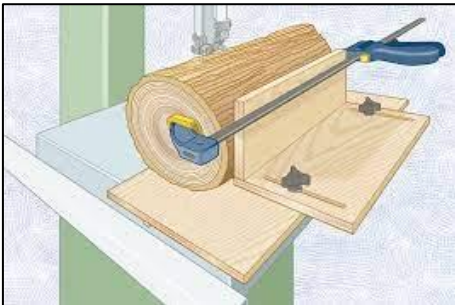
We have a large and a small bandsaw in the Shed. The large bandsaw is used for, cutting larger timber and allows you to achieve gentle curves due to the size of the blade. It is usually 19mm deep. The smaller bandsaw, however should only be used on thin timber, but the advantage here is that greater radiused curves can be achieved because the blade can be as small as 5 - 10mm. The size of the blade makes it a great deal more prone to breaking if forced into the work. So, you need to choose the machine to suit the process you are trying to achieve.

Setting the Bandsaw.

There are a set of guides above and below the table. Their purpose is to guide the blade through the timber and keep the blade rigid and straight. The bottom guides, under the table are set and should only need checking every now and then during maintenance. The top guides are adjustable for height above the timber being cut. Keep the top guides just above the surface of your timber, 10 – 15mm would be suitable.



Using the Bandsaw.

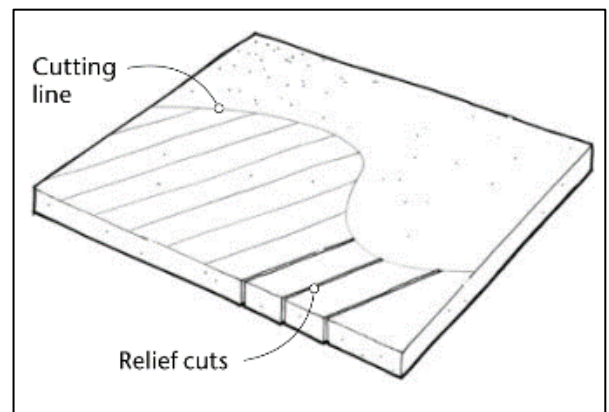


If cutting timber from a log you need to do one of two things to prevent the log from rolling during the cut and most likely snapping the **expensive** blade. Create a cradle to support the log and clamp it in place.



There are many varied types of cradles so do some research, or ask for advice from a supervisor. The alternative is to prepare a flat surface which will run on the table or a vertical support fence. It is even more desirable to have two flat faces square to each other. When ripping longer lengths it is desirable to use the fence to maintain straight cuts.

When cutting radiused curves do not force the blade. "use your ears". If you can hear the bandsaw starting to slow down or the blade is starting to scream and make other unusual noises then you know you are forcing the machine. If trying to make a tight radius cut you need to make several relief cuts to achieve the shape. This allows you to cut out individual segments without the blade being forced.





Other Safety Survival Strategies to consider;

- Never have fingers, hands or arms crossing in front of the blade. Keep hands on each side of the blade and if that means your fingers will be close to the blade you will need to use push sticks.
- Avoid pulling the timber back out of long cuts. If you must, turn the machine off first to avoid pulling the blade out of the guides or off the band wheels.
- If the blade breaks during a cut it will be quite frightening causing you to soil yourself. Turn the bandsaw off and stand back till the machine stops. Advise the supervisor so the blade can be changed.

Please remember the **Safety Survival Strategies** outlined here are just the very basics to ensure a safe bandsaw operation, not a medical operation. For greater details refer to **Training Module #5 - Bandsaw**

If in doubt, ask

Neil Rogers
Health and Safety Officer

Tool Tips

Guide to Assessment and Repair of Flood Damaged Timber



This wood is still sound

If you have been unfortunate enough to have sustained flood or water damage to your house or property, the link below will give you access to some excellent advice put out by Timber Queensland. A lot of good information on assessing damage and what to do about it.

<https://www.publications.qld.gov.au/dataset/north-queensland-small-business-disaster-recovery-february-2019/resource/32913fd7-d699-48e4-9b0d-a046da552b6c>

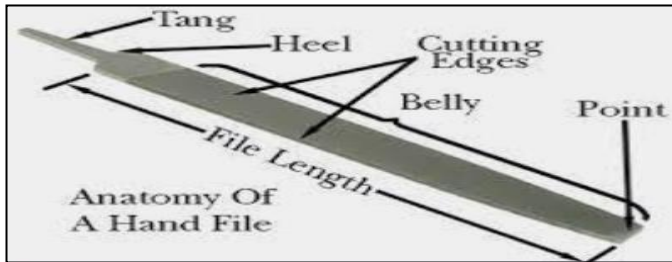


This wood is not sound



Hand Files

There are two different systems of identifying hand files: the American pattern system, which is the most widely used in Australia and, the Swiss pattern system more commonly used by clock and tool makers.

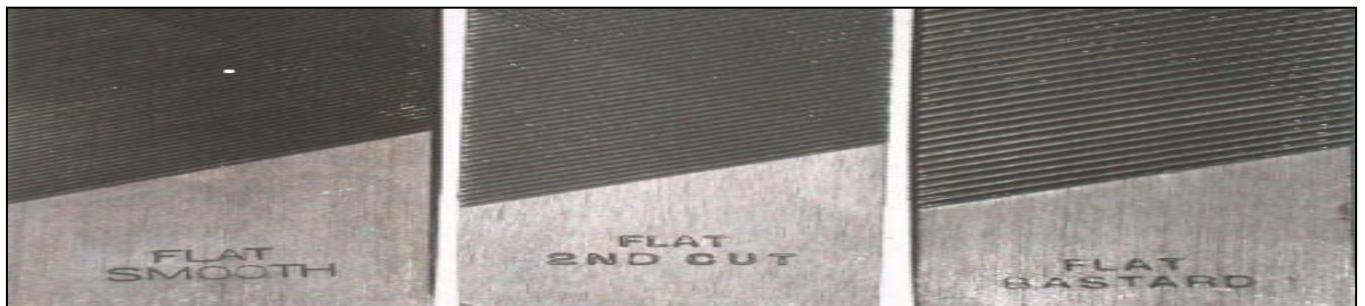
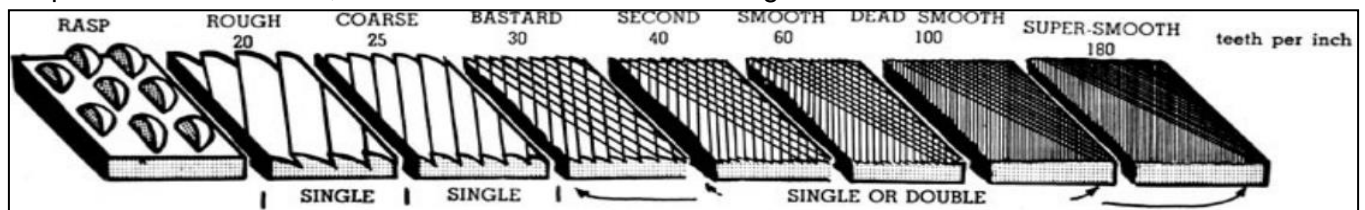


The most commonly used files are the Flat and Mill files. The Flat file has two parallel sides for general filing tasks and the Mill file has tapered sided originally designed for sharpening Mill saws and more recently used as a file that will produce a good quality finish, if used correctly. The file in the photograph at left is a mill cut file. Notice that the

sides of the file are tapered, i.e., not parallel as with a flat file.

There are several attributes of a file to be considered:

- 1) Length – the length from the point to the heel.
- 2) Coarseness – how aggressively the teeth will cut. see Figure 1. Below.
- 3) Cut –the range of aggressiveness from the teeth starting with Rough 20 tpi, Course 25 tpi, Bastard 30 tpi, Second 40 tpi, Smooth 60 tpi, Dead Smooth 100 tpi.
- 4) The most commonly used files are the Bastard, Second and Smooth cuts.
- 5) The longer the file the more aggressive the cut i.e.. bigger, fewer teeth per inch.
- 6) The metal to be filed (soft or harder) will dictate the length of the file, together with the choice of teeth per inch i.e.. Bastard, Second or Smooth cut and a single cut or double cut file.



Storage and maintenance advice:

- Files are best stored separated in a rack, so that they do not damage the teeth of the file.
- Blunt files require more effort to use, and the results are usually less than satisfactory.
- Files wear out and eventually should be consigned to the bin.
- The single most frequent cause of a poor results when filing (scratches on the surface of the work piece) is caused by “pinning”, Pinning is simply the material removed by filing, accumulated in the teeth of the file, which causes scratches and grooves on the work.
- Good work practice is to regularly remove the pinning from the file by using a “file card”. Sometimes it is necessary to use an awl to remove stubborn pinning.



- A short length of 12 mm copper tube, flattened on one end and used to rub across the file, parallel with the teeth to effectively removing the pinning.



Loading the file with chalk is a simple and effective way to reduce the amount of pinning retained in the teeth of a file. The chalk is an effective lubricant and is easily removed with a file card. The file can then be reloaded with chalk before its next use.



The photograph at left is a good example of “pinning” and an awl is being used to remove stubborn filings in the teeth. No, that is not a screw driver being used to remove the filings.



If the file is regularly loaded with chalk a file card will readily remove the pinning.

To improve your filing technique:

- **SAFETY:** Never use a file without a properly fitting handle. The tang of the file can quickly penetrate the palm of your hand and spill blood all over your work.
- Don't allow the file to remain in contact and under pressure with the work piece on the return / back stroke. Engage the work piece on the forward stroke of the file and lift the file from the work piece on the return / back stroke. Dragging the file backwards over the work piece serves only to dull the teeth on the file.
- Use two hands on the file, one hand on the handle and the other gripping the point. Stand with your two legs apart and in line with the vice. Ideally the work surface being filed should be at the height of you elbow.
- Finishing the filing task is usually best done using the “draw filing” technique, which is simply holding the file in two hands across the work piece and moving the file forwards and backwards.

HAPPY FILING!

Gavan Clarke



Trading Post

Surplus Tools from the Shed

We have some surplus power tools at the shed. All the below tools are for sale by donation to Shed West (make us an offer). All are available as is, where is. No delivery, no warranty, no returns. No representations are made as to their condition. However, they have been plugged in and run without any obvious issues apparent. These tools have not been electrically tested and tagged.



Large power planer Makita model 1805B



10" Circular saw Makita model 5900B
We have some spare blades as well.



Small power planer Makita model 1900B



Router Makita model 3608B (1/4" collet)

If you are interested in any of these tools, see the Shed Supervisor or a member of the Operations Subcommittee.

Any Spare Old Sheets and Blankets?

If you have by any chance any sheets and blankets that are currently surplus to your requirements, Mike Symes will donate them to the RSPCA where he volunteers on a regular basis each week looking after dogs of all shapes, breeds, and sizes.

Mike Symes



Weekly Routine

Date	Start Time	Finish Time	Event	Venue
Monday	9:00 AM	12:00 PM	500 cards	Building behind the Green Shed
Monday	1:30 PM	4:30 PM	Leather work	Blue Shed
Tuesday	2:00 PM	4:00 PM	Guest Speaker Program - 1st, 2nd, 4th Tuesday each month, see scheduled events for details	Kenmore Library
Tuesday	12:00 PM	2:00 PM	Monthly barbecue - 3rd Tuesday each month	Green shed
Wednesday	11:00 AM	12:00 PM	Christmas Stall Sub Committee Meeting - 2nd Wednesday each month	Building behind the Green Shed
Wednesday	9:00 AM	12:00 PM	Management Committee Meeting - 3rd Wednesday each month	Kenmore Library meeting room
Thursday	9:00 AM	12:00 PM	Pyrography, community projects, good fellowship, and solving the problems of the world	Blue Shed
Friday	9:00 AM	12:00 PM	Computing	Building behind the Green Shed
Monday to Friday	8:30 AM	12:00 PM	General woodworking and community projects	Green Shed
Monday to Friday	8:30 AM	12:00 PM	Vehicle restoration	Metalworking bay



Scheduled Events

Date	Start Time	Finish Time	Event	Venue
Friday, April 29			<i>Newsletter</i> publication	
Saturday, April 30	9:00 AM	4:00 PM	Open Gardens - Brisbane West	See newsletter for details
Sunday, May 1	9:00 AM	4:00 PM	Open Gardens - Brisbane West	See newsletter for details
Saturday, April 30	9:00 AM	4:00 PM	Craft Timber Sale	9 Springfield Court
Sunday, May 1	9:00 AM	4:00 PM	Craft Timber Sale	Wights Mountain
Tuesday, May 3	2:00 PM	3:30pm	Guest Speaker - David Arnold, retired structural engineer - Modular furnace building, or how to move a 70m tall building from Shanghai to South Australia.	Kenmore Library meeting room
Tuesday, May 10	2:00 PM	3:30pm	Guest Speaker - Phil Castle - Burke and Wills	Kenmore Library meeting room
Wednesday, May 11	11:00 AM	12:00 PM	Christmas Stall Subcommittee Meeting	Donga behind green shed
Thursday, May 12	7:00 AM	3:30 PM	Visit to Buderim Men's Shed	Departing by bus from Kenmore Plaza
Tuesday, May 17			No Guest Speaker Talk (3rd Tuesday)	
Tuesday, May 17	12:00 PM	2:00 PM	Barbecue at the shed	Green Shed
Wednesday, May 18	9:00 AM	12:00 PM	Management Committee Meeting	Kenmore Library meeting room
Tuesday, May 24	2:00 PM	3:30pm	Guest Speaker - Lewis Hoffman, Stroke Safe Queensland - his personal journey following a stroke, how we might recognise and avoid them	Kenmore Library meeting room
Friday, May 27			<i>Newsletter</i> publication	
Tuesday, May 31			No Guest Speaker Talk (5th Tuesday)	
Tuesday, June 7	2:00 PM	3:30pm	Guest Speaker - Clare Blake - QIMR Berghofer	Kenmore Library meeting room
Wednesday, June 8	11:00 AM	12:00 PM	Christmas Stall Subcommittee Meeting	Donga behind green shed
Tuesday, June 14	2:00 PM	3:30pm	Guest Speaker - TBA	Kenmore Library meeting room
Wednesday, June 15	9:00 AM	12:00 PM	Management Committee Meeting	Kenmore Library meeting room
Tuesday, June 21			No Guest Speaker Talk (3rd Tuesday)	
Tuesday, June 21	12:00 PM	2:00 PM	Barbecue at the shed	Green Shed
Friday, June 24			<i>Newsletter</i> publication	
Tuesday, June 28	2:00 PM	3:30pm	Guest Speaker - TBA	Kenmore Library meeting room



Shed Contacts

Position	First Name	Surname	Phone	eMail / web
Management Committee	-			
President	Mike	Symes	0406 183 431	Shedwest.Pres@gmail.com
Vice President	Gerald	Barber	0418 763 637	gerald.barber1@gmail.com
Secretary	Jim	Watters	0414 643 639	Shedwest.Sec@gmail.com
Treasurer	Shyam	Verma	0412 669 565	Shedwest.Treas@gmail.com
Committee	Doug	Nissen	0412 324 023	dougniss@tpg.com.au
	Ian	Boudry	0487 420 433	iboudry@gmail.com
	Neil	Rogers	0439 444 018	neiltrogers@optusnet.com.au
	Phil	Batten	0418 715 004	phil.liz.batten@bigpond.com
	Gavan	Clarke	0427 171 041	gavan@seehills.net
	Doug	Wait	0418 721 472	dwait@bigpond.net.au
	David	Arnold	0477 300 237	arnoldda@optusnet.com.au
	Peter	Merrell	0468 895 901	petermerrell@aapt.net.au
	-			
Shed Ops Subcommittee	Neil	Rogers	0439 444 018	neiltrogers@optusnet.com.au
	Doug	Nissen	0412 324 023	dougniss@tpg.com.au
	Howard	White	0404 936 462	howpen@tpg.com.au
	John	Lippiatt	0407 574 745	jelippiatt@gmail.com
	David	Brown	0421 594 362	dbrown55@bigpond.com
	Phil	Batten	0418 715 004	phil.liz.batten@bigpond.com
	Gavan	Clarke	0427 171 041	gavan@seehills.net
	Doug	Wait	0418 721 472	dwait@bigpond.net.au
	-			
Re-Development Subcommittee	Mike	Symes	0406 183 431	mike_symes_01@hotmail.com
	Gerald	Barber	0418 763 637	gerald.barber1@gmail.com
	Chris	Young	0418 794 093	cgyoung@powerup.com.au
	Neil	Rogers	0439 444 018	neiltrogers@optusnet.com.au
	-			
Shed Supervisors	Neil	Rogers	0439 444 018	neiltrogers@optusnet.com.au
	Alan	Ernst	0408 769 576	ernsts@bigpond.net.au
	David	Brown	0421 594 362	dbrown55@bigpond.com
	Doug	Nissen	0412 324 023	dougniss@tpg.com.au
	Doug	Wait	0418 721 472	dwait@bigpond.net.au
	Gavan	Clarke	0427 171 041	gavan@seehills.net
	Geoff	Haigh	-	big_jude@hotmail.com
	Gerald	Barber	0418 763 637	gerald.barber1@gmail.com
	John	Lippiatt	0407 574 745	jelippiatt@gmail.com
	Phil	Batten	0418 715 004	phil.liz.batten@bigpond.com
	Richard	Francis	0409 647 108	rwfran@bigpond.net.au
	Ron	Williams	0479 084 056	chrisronwill@hotmail.com
	Trevor	Ward	0408 678 134	t_j_ward@hotmail.com
	Warren	Cameron	0400 006 046	wm.cameron@bigpond.com
Land Rover Restoration Subcommittee	Doug	Wait	0418 721 472	dwait@bigpond.net.au
	Bruce	Woodhouse	0400 815 593	bmwood@bigpond.net.au
	Michael	Williams	0412 341 948	mike@better-access.com
	Gerald	Barber	0418 763 637	gerald.barber1@gmail.com



**SHED WEST
COMMUNITY
MENS SHED INC.**

Position	First Name	Surname	Phone	eMail / web
Special Roles	-			
Shed Office	Malcolm	Douglas	3878 2825	shedwest@bigpond.com https://shedwest.com/
Welfare Officer & Membership Secretary	Ian	Boudry	0487 420 433	iboudry@gmail.com
Shed Safety Officer	Neil	Rogers	0439 444 018	neiltrogers@optusnet.com.au
Induction Training	Dave	Brown		
Community Projects	Doug	Nissen	0412 324 023	dougniss@tpg.com.au
Blue Shed Coordinator	Warren	Cameron	0400 006 046	wm.cameron@bigpond.com
Guest Speaker Program and Library Contact	Chris	Wright	0409 278 439	chrisjoan72@yahoo.com.au
Social Events Coordinator	Phil	Batten	0418 715 004	phil.liz.batten@bigpond.com
Trotec Laser Coordinator	Ross	Monks	0407 032 282	ross@rossmonks.com
3D Printer Coordinator	Doug	Wait	0418 721 472	dwait@bigpond.net.au
CNC Router Coordinator	Neil	Rogers	0439 444 018	neiltrogers@optusnet.com.au
Auditor	Vic	Lorenz	0438 430 079	vlorenz@bigpond.net.au
IT Consultant / Web Site	Ray	Johnson	-	pamray19@tpg.com.au
Newsletter Editor	David	Arnold	0477 300 237	arnoldda@optusnet.com.au
	-			
Special Interest Groups	-			
Photography	Paul	Steinmuller	0487 662 094	wildwood@bigpond.net.au
Leatherwork	Alan	Ernst	0408 769 576	ernsts@bigpond.net.au
Wood Turning	Brian	Creese	0447 108 551	brian.creese@bigpond.com
Land Rover Restoration	Doug	Wait	0418 721 472	dwait@bigpond.net.au
Christmas Stall Subcommittee	Mike	Symes	0406 183 431	mike_symes_01@hotmail.com
	Doug	Nissen	0412 324 023	dougniss@tpg.com.au
	Neil	Rogers	0439 444 018	neiltrogers@optusnet.com.au
	Ross	Monks	0407 032 282	ross@rossmonks.com
	Warren	Cameron	0400 006 046	wm.cameron@bigpond.com
	Jim	Watters	0414 643 639	jjwatters@gmail.com

Men's Sheds	Address	eMail / web
Bellbowrie Men's Shed	55 Priors Pocket Rd Moggill QLD 4070	FaceBook: Bellbowrie Mens Shed
Indooroopilly Men's Shed	60 A Stamford Rd Indooroopilly QLD 4068	http://www.indroshed.org.au/
Centenary Suburbs Men's Shed	125 Monier Road Seventeen Mile Rocks QLD 4073	http://www.csms.org.au
Oxley Men's Shed	18 California Rd Oxley QLD 4075	FaceBook: Oxley Mens Shed
Ashgrove – The Gap Men's Shed	98 Yoorala Street The Gap QLD 4061	https://www.ashgrovethegapshed.com/
Boonah Activity Shed	-	FaceBook: Boonah Activity Shed



Rogues Gallery – Your Shed West Management Committee

			
Mike SYMES President	Gerald BARBER Vice-president	Jim WATTERS Secretary	Shyam VERMA Treasurer
			
Doug NISSEN Committee member	Ian BOUDRY Committee member	Neil ROGERS Committee member	Phil BATTEN Committee member
			
Gavan CLARKE Committee member	Doug WAIT Committee member	David ARNOLD Committee member	Peter MERRELL Committee member