



SHED WEST COMMUNITY MENS SHED INC.

28/71/2023

NEWSLITTER

Shed West Community Mens Shed Inc.
98 Brookfield Rd, Kenmore
O Box 391, Kenmore, Qld 4069
shedwest@bigpond.com
ABN 38 009 395 013

Contents

Shed News	1
Membership Fees	7
Events Calendar	7
Member Project of the Month	8
Guest Speakers	9
Social Events	10
Tool Tips	11
Management Matters	13
Scheduled Events	14
Weekly Routine	15
Shed Contacts	16
Mens Sheds	18

Harp Recital at Shed West



See the article for our July barbeque

Shed News

Community Projects



Ron Williams and Brynn Davies looking pleased with the results of their work refurbishing this very nice garden seat.



Another custom sign making project on the CNC router. This one is for Brookies.

It takes years to build relationships with local community groups and businesses, and it is quality projects like this that those relationships are built on.

And even the little jobs are satisfying. A lady came in last week with a piece of plywood and a length of bullnose moulding, marked out for cutting to size. It only took five minutes and five saw cuts for another happy customer to be on her way. Thanks Pam, we were only too happy to help.

Is everybody 'appy? Yer bet yer life we are

Leatherwork Group



Leatherwork has progressed slowly this month with several members away either travelling or otherwise committed. Ross has sent some great photos from the Kimberley and those who have been indisposed are recovering well.

John has continued with the briefcase which was in progress in last month's newsletter.

Greg has been busy cutting out numerous key cases. Then Greg and Alan have been putting together more key cases for either multiple or single keys.

Alan has finalised the processes for building a link belt.

During all this, with our sincere thanks, we have been ably assisted on the Laser by Jacques.

Alan Ernst



Vehicle Restoration Group

Rebuild Progress

With Ollie's chassis back in the workshop, refitting various refurbished parts has commenced. The front and rear suspension and axles are now attached to the chassis, and work is underway installing the front hubs and steering arms. New road wheels and tyres are being progressively fitted.



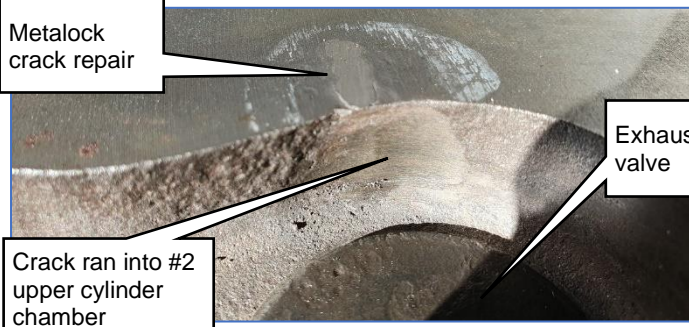
Refurbished rear springs, axle and road wheels



The next stage will see the brake lines installed and the wiring loom run through the chassis box section to the rear of the vehicle. This will then allow the sandblasted and painted bulkhead to be put back in place.

Engine Rebuild

JL Machining have completed their work on the block, and it is back at the Shed. Over the next few weeks, it will have its pistons, crankshaft, camshaft, oil pump, timing gear and other ancillary items installed.



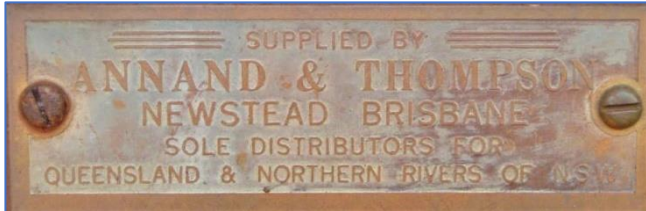
Whilst they were skimming the cylinder head, JL Machining found a 20mm crack running across the cylinder head face and into the #2 upper cylinder chamber. This has been repaired by Metallock in Archerfield using their 'Metallock' process. Metallock is a cold metal stitching technique that can be used on cast iron, aluminium, or steel castings. No heat is required, so no induced stresses or distortions of the parent metal occurs.

The cylinder head is now back with JL Machining for them to finish their work on it before it comes back to the Shed to complete the engine rebuild. Any Shed members who are interested in either observing or being directly involved in the engine rebuild should talk with Pete or Bruce about the timing of the work.



Land Rover Dealers - Annand and Thompson, Newstead

There are only two steel body panels on our Land Rover – the bulkhead which sits between the engine bay and the driver's compartment, and the radiator support panel at the front. All the other panels including the doors, bonnet, wings, sills, floor plates, and rear tub are fabricated from aluminium.



The bulkhead was recently stripped of the balance of its parts prior to going to the sandblasters. During that process, we found a faded label which showed Ollie was originally sold by Annand and Thompson of Newstead, a name from the 60s and 70s that would be very familiar to many Shed members.



Annand and Thompson was located on Breakfast Creek Rd from the 1930s. They sold Rambler, VW, Audi, Peugeot, Rover, and Land Rover vehicles until the 1970s. In 1973, Leyland Truck and Bus took over the distribution of Rovers and Land Rovers in Brisbane. The Breakfast Creek Rd site was subsequently taken over by a Mitsubishi dealership and is now part of the recently opened Bunnings store in Newstead.

Bruce Woodhouse



Jim Watters recently found Bruce deep in thought. It is reassuring that Bruce is reading the instructions, but the way he is scratching his head might be cause for concern?

Ed



Monthly Cleanup



The last Friday of the month is Shed cleanup day. Last month Michael Volz gave the smoko table a good scrub from top to bottom. Always good to see members roll up their sleeves and getting stuck in for the benefit of the Shed.

It is cleanup day again today folks!

As part of the cleanup, we must ensure we leave the donga clean and tidy. Our neighbours from the Kenmore Bridge Club are hosting the Roma Bridge Club next month, and they will be using the donga to cater for the extra players.

Garage Sale



Two weeks ago, we held a garage sale at 98 Brookfield Road. We had been building up to this event for months, sorting through the Shed and setting aside surplus items for the sale.

On Saturday, 15th July, it all came together. It was great to see so many members turn out in the chilly pre-dawn to get everything set up. At 5:00 am, in the middle of winter, most sane people are curled up under the doona. We are made of sterner stuff at Shed West!



The first customer arrived at 6:01 am and departed half an hour later with arms full of tools and a smile on his face.

With a steady stream of customers right throughout the morning, the Eftpos machine was running hot. Howard White and Doug Nissen were particularly active whenever a potential buyer looked like they needed encouragement (*Never mind the quality, feel the width*).

Members kept popping over to Pater and Mick at the barbeque to have a chat (and warm their freezing hands over the hot plate).



Midday, and it was all over. Most of these guys had been at the shed since 5:00 am. Well done gents, solid effort!

Epilogue – On the Monday after the sale, Bellbowrie and Jindalee Men's Sheds were invited to take any unsold items that they liked, and the remainder of the unwanted items were donated to e-waste.



Barbeque and Harp Recital



Why are these people sitting so attentively at the July barbeque? No, they are not waiting for Peter and Mick to finish cooking!

On this occasion, we were privileged to have the company of Graeme Correll's daughter, Bronwyn to add some culture to our lives.



Bronwyn gave us a charming demonstration of a variety of beautiful instruments that had been crafted by Graeme.

The acoustics at the Blue Shed are not ideal (to put it mildly), and the traffic noise did not help, but the mellow tone of the music was sublime. Thank you, Bronwyn!



After putting in a seven hour shift for the garage sale sausage sizzle on the previous Saturday, Peter Nisbet and Mick Giddings backed up three days later for the regular monthly barbeque.

Thank you, Peter and Mick!

**Peter and Mick are heading bush in August
We are looking for a couple of volunteers to fill in and run the barbeque on August 15th**

If you can help out with the August barbeque, please contact

David King
0417 639 337



Storage Project

With the garage sale done and dusted, our shed is now tidier than it has been for years, but we are not going to rest on our laurels. There will be a load of pre-cut plywood arriving at the Shed today for the construction of another four storage cabinets. If you are at the shed today for the monthly cleanup, please lend a hand to unload and stack the plywood.

Storage Project Working Bees kick off again next Thursday, August 3rd

Flying High (or so it seemed)



Mike Symes recently survived another 60 minute session in a real-time flight simulator flying a Boeing F/A-18 "Super Hornet" jet fighter. It's his third time in this particular simulator and after practising multiple offensive and defensive aerobatic manoeuvres – one of which was the "Immelmann Turn" – Mike was tasked with a mid-air refuelling exercise linking up with an airborne aircraft refueller orbiting at 11,000-feet above sea level over Moreton Bay. For those aeronautically-minded, the "Immelmann Turn" comprises an ascending half-loop followed by a half-roll, resulting in level flight in the opposite direction at a higher altitude and is simply called a roll-off-the-top by most pilots.

Membership Fees

This is a reminder to members that your Shed West annual membership fee of \$60 was due at the end of June.

**If you haven't already done so
Please pay \$60 annual membership fee before the end of this month**

Membership fees may be paid by cash or eftpos at the Shed office. If you wish to pay by bank transfer, the Shed West account is:

**Payment can be made by direct debit to Shed West's bank account
BSB 124029 Acc. No. 233 300 18**

If you are paying by bank transfer, please record your name and "membership fees" on the transaction.

Events Calendar

The calendar at the back of our newsletters provides a six to eight week lookahead of shed events. However, a common question asked by members is "when is such and such on, I've lost my newsletter". Fear not, you can always find the monthly newsletter on our website, under *Menu, Newsletters*

NEWSLITTERs are on the Shed West website



Member Project of the Month

Document Box

I was inspired to create this box design by my grandfather who was a simple man working as a printer with the Courier Mail and spending his spare time creating furniture incorporating parquetry. His designs were very detailed and intricate, and they were not small boxes like mine. He created dining room tables, grandfather clocks, coffee tables and so on. Unfortunately, I was too young when he passed away and I never got to meet him, but his legacy lived on in all the houses of his children for whom he made them. Every time I visited a relative, I saw and admired these works of art.

My daughter wanted a document box to house all those important papers in the one place. I looked to use some more exotic timbers. We had some cabinetry made for our home by 2001 Furniture Company which used New Guinea rosewood. I redesigned these cabinets by down-sizing thus giving me a supply of spare timber. The colours were warm with distinct grain structure which I thought would be suitable for the project.



The construction featured mitred corners and reinforced with Jarrah splines. One long length of rosewood was used for all sides so the grain would be continuous and wrap around the box. The plywood base was trenched into the carcass for additional strength. To create the lid the box was then placed on edge and cut along all sides. I opted to lightly chamfer all top and bottom edges of both lid and base.



The parquetry top incorporated Tasmanian Myrtle, Jarrah and more New Guinea rosewood. The purpose here was to try to keep the reds and browns in harmony. To what would have been to my grandfather's dismay I achieved the parquetry design with the aid of the CNC router. I drew the design on paper then transferred the design to a data file for the CNC. The individual segments were duplicated with much greater precision by adopting this approach. The pieces were then glued together onto a plywood base.

This inlaid lid panel was then inset into the top of the box which had been rebated to house the lid. Some minor trimming was required here for the fit.



The internal layout of the box was simple. It had to be large enough to house A4 paper, have a sliding tray for storing smaller items like coins or jewellery and the lid was restrained by a chain to prevent pressure being exerted on the inset hinges should the lid fall back. I would have liked to include a secret compartment but decided the main purpose was simplicity of function.

In total the box had 6 coats of polyurethane satin, the lid 12 coats and the insides had only 4 coats. The project took me nearly 6 months from go to wo with most of the time spent on applying the finishing.

I have promised myself that the next project will be with box dovetails, secret compartment/s and be of even more exotic timbers.

Neil Rogers

Guest Speakers

Tuesday 1st August - Elizabeth Brownlee - Chiropractor

Would you like to improve your mobility and function now that you're getting older? Prefer to relieve pain as you do it?

Our guest speaker next Tuesday might just be able to help!

Elizabeth Brownlee has been a Chiropractor for 27 years. Over this time, she's witnessed the changes the years bring in her long term clients and sees the benefits they've gained from Chiropractic care.

Elizabeth will share insights into how Chiropractic helps maintain mobility and function as we age and isn't just about relieving pain (though it does that too!). She assures us that Chiropractic isn't about fixing a back or neck that's "gone out", as is commonly mentioned, and explains what is really happening when people feel "out", and what happens in the Chiropractors clinic.

Posture improvements for everyday situations and lifestyle tips on staying active will be discussed, and there'll be time to answer specific questions.

Afternoon tea on August 1st will be hosted by John Lippiatt. Stuart Reid will be your MC.

Tuesday 8th August - Jeffrey Batten - Army life: Commandos and beyond

More details on Jeffrey's talk in next week's *Newslette*

Wives and partners are always welcome at our Tuesday talks

Chris Wright



Social Events

Friday 25th August – Visit to Straddie Brewing Company

Thank you for those members who completed the questionnaire sent out a few weeks ago which was aimed at reinvigorating Shed West's social program. Response to the survey was disappointing (only 14 returned questionnaires), but we're going ahead with social events anyway!!

We are aiming to have one social event on offer each month, starting with August's Social Sortie, a trip to Straddie!!

- When:** 25th August 2023
- What:** Day-trip North Stradbroke Island and visit to Straddie Brewing Co. The brewery visit will include a free brew-floor tour by award winning Head Brewer, General Manager and part-owner, Andrew Sydes.
- Details:** Drive yourself (or car-pool) to the Sealink Ferry Terminal at 12 Emmett Drive, Cleveland and catch the passenger ferry to Dunwich on North Stradbroke Island. Then jump on the Translink bus (use your go card) which meets the ferry, and it will drop you at the shops adjacent to the Brewery. Alternatively, it's a 500 metre walk from the ferry terminal to the brewery – they say, 'just enough to build a thirst for that first Straddie-Brewed-Beer'. The brewery not only serves award winning beer and other drinks but also provides a sumptuous lunch. Once you've had an adequate amount of food and beverage, get back on the bus (it leaves every hour) and travel across the island to see the sights of Point Lookout. After taking in the sights of Point Lookout, take the return bus trip to Dunwich and jump back on the ferry for the 30 minute ride back to Cleveland.
- Where to meet:** Make your own way to the Sealink Ferry Terminal, in time to catch the 09:55 ferry to Straddie. Make sure you leave enough time to find a park and buy your tickets – 30 to 35 minutes should suffice. The normal fare to Dunwich is \$21.00 per person, but Seniors and Pension Card holders will get the usual discount.
- Possible side-trip:** A bus trip to Point Lookout could be arranged to either charter a bus (\$20 p/p) or use your go card and jump on the routine Translink bus that meets the ferry and does the trip across the island to Point Lookout and return, which is 30 minutes each way. That would give you an hour at 'the point' before catching the next bus back to the Brewery.
- Who?** The day is open to all members, their wives, and significant others.

Please remember to have a designated driver for your trip home from Cleveland!!

The ferry, bus and brewery are all 'wheelchair friendly' (the brewery has a wheelchair accessible lift), which should open the day up to any members with mobility concerns.

Please Note: If we decide on doing the Point Lookout detour, we will need to get an earlier ferry.

Interested? Please leave your name on the list at the Shed Office or email Shedwest@bigpond.com.
David King

Trust a navy man to kick off his new job as Social Convenor with a sea voyage 😊!

Ed



Tool Tips

Succotash of the Non-Suffering Type

I wonder how many of us who grew up watching Sylvester and Tweety ever knew what succotash was (and was it fair that it might be sufferin'?).

Did you know that according to culinary history the word “succotash” is derived from the Narragansett Indian word *msickquatash* meaning boiled corn kernels? This simple and delicious dish featuring corn, beans and other vegetables is a nourishing dish of Native American origin.

Over the centuries, succotash evolved into a side dish that usually includes tomatoes and lima beans—sometimes in addition to green beans, capsicum, and other veggies. Most recipes also call for salty bacon or pork belly, rich dairy like butter or cream, and fresh herbs.

Here’s a random recipe from the interweb:

Ingredients

- 10 ounces fresh or frozen baby lima beans (2 cups)
- 4 center-cut bacon slices
- 1 cup chopped sweet onion (from 1 small onion)
- 4 ounces fresh okra, cut into ½-inch-thick slices (1 cup)
- 1 garlic clove, finely chopped (1 tsp.)
- 3 cups fresh corn kernels (4 ears)
- 1 ¼ teaspoons salt
- ¼ teaspoon black pepper
- 3 tablespoons butter
- 5 ounces cherry tomatoes, halved (1 cup)
- ¼ cup thinly sliced fresh basil

Directions



Cook lima beans:

Place lima beans in a medium saucepan, and add water to cover. Bring to a boil over medium-high. Reduce to medium-low, and simmer until beans are just tender, 8 to 10 minutes. Drain and set aside.



Cook bacon:

While beans simmer, place bacon slices in a large cast-iron skillet over medium. Cook until crisp, about 8 minutes, turning once after 5 minutes. Transfer bacon to paper towels; crumble and set aside. Reserve drippings in skillet.



Sauté the veggies:

Add chopped onion, fresh okra, and garlic to skillet over medium, and cook, stirring often, until onion is just tender, about 6 minutes.



Stir in fresh corn kernels, salt, pepper, and drained beans, and cook, stirring often, until corn is tender and bright yellow, 5 to 6 minutes. Add butter, and cook, stirring constantly, until butter is melted, about 1 minute. Remove from heat.



Stir in halved cherry tomatoes and sliced basil; sprinkle with crumbled bacon and serve immediately.

Doug Wait



Management Matters

The Shed Management Committee met on 19th July in the Kenmore BCC Library. The winter virus season was evident in that several members could not attend. Hence, the meeting concluded in record time.

Key Items

- A decision to reactivate the Social Program by planning regular excursions and visits to locations of interest was made. The first excursion will be scheduled for 25th August. Details will be publicised shortly.
- Membership continues to grow, currently standing at 139.
- Main projects including the reorganisation of shed resources and construction of storage cabinets are proceeding well. Ollie, the Land Rover is beginning to take shape and is projected to be completed by February or March next year.
- The Operations Sub-committee is working on developing a proposal to take to Council as part of the Redevelopment Project funded by the Commonwealth.
- The committee acknowledge the work done by Doug Wait who organised a successful Garage Sale on Saturday July 15th. The sale of excess material has contributed to Shed Income but more importantly has taken a step towards decluttering the workshop.
- The next meeting will be on 17th August.

Suggestions for inclusion in meeting agenda should be sent to the Secretary.

Jim Watters-
Secretary
ShedWest.sec@gmail.com



Scheduled Events

Date	Start Time	Finish Time	Event	Venue
Tuesday, August 1	2:00 PM	3:30pm	Guest Speaker - Elizabeth Brownlee Chiropractor	Kenmore Library meeting room
Tuesday, August 8	2:00 PM	3:30pm	Guest Speaker - Jeffrey Batten Army life: Commandos and beyond	Kenmore Library meeting room
Thursday, August 10	9:00 AM	11:00 AM	Operations Subcommittee Meeting	Donga behind Shed
Tuesday, August 15	12:00 PM	2:00 PM	Barbecue at the Shed	Green Shed
Thursday, August 17	9:00 AM	12:00 PM	Management Committee Meeting	Kenmore Library meeting room
Friday, August 25	9:30 AM		Social Outing to Straddie Brewing Company	Depart from: Sealink Ferry Terminal 12 Emmett Drive, Cleveland
Friday, August 25			NEWSLITTER publication	
Tuesday, September 5	2:00 PM	3:30pm	Guest Speaker - Warren Cameron (Shed) Domestic Insurance -Traps and Tips	Kenmore Library meeting room
Tuesday, September 12	2:00 PM	3:30pm	Guest Speaker - Brad McGregor UQ Healthy Living Program	Kenmore Library meeting room
Wednesday, September 13	9:00 AM	11:00 AM	Operations Subcommittee Meeting	Donga behind Shed
Sunday, September 17			All British Day Car Show	St Joseph's Playing Fields, Vivian Avenue Tennyson
Tuesday, September 19	12:00 PM	2:00 PM	Barbecue at the Shed	Green Shed
Wednesday, September 20	9:00 AM	12:00 PM	Management Committee Meeting	Kenmore Library meeting room
Friday, September 29			NEWSLITTER publication	
Tuesday, October 3	2:00 PM	3:30pm	Guest Speaker - Elkie McKenzie - Lang Park PCYC Breaking the Cycle - Helping young drivers to improve their skills	Kenmore Library meeting room
Tuesday, October 10	2:00 PM	3:30pm	Guest Speaker - TBA	Kenmore Library meeting room
Wednesday, October 11	9:00 AM	11:00 AM	Operations Subcommittee Meeting	Donga behind Shed



Weekly Routine

Date	Start Time	Finish Time	Event	Venue
Monday	9:00 AM	12:00 PM	500 cards	Building behind the Green Shed
Monday	1:30 PM	4:30 PM	Leather work	Blue Shed
Tuesday	8:30 AM	12:00 PM	Community Projects	Green Shed
Tuesday	2:00 PM	3:30 PM	Guest Speaker Program 1st, 2nd Tuesday each month See scheduled events for details	Kenmore Library
Tuesday	12:00 PM	2:00 PM	Monthly barbecue 3rd Tuesday each month	Green shed
Wednesday	9:00 AM	11:00 AM	Operations Subcommittee Meeting 2nd Wednesday of each month (unless scheduled otherwise)	Donga behind Shed
Wednesday	9:00 AM	12:00 PM	Management Committee Meeting 3rd Wednesday of each month (unless scheduled otherwise)	Kenmore Library meeting room
Thursday	8:30 AM	4:30 PM	Shed Improvement Projects	Green Shed
Thursday	9:00 AM	12:00 PM	Pyrography, community projects, good fellowship, and solving the problems of the world	Blue Shed
Friday	7:30 AM		<i>NEWSLITTER</i> publication Friday following the 4th Wednesday of each month	Your morning paper, delivered for breakfast
Friday	9:00 AM	12:00 PM	Computing	Building behind the Green Shed
Friday	1:30 PM	4:30 PM	Woodturning Group	Green Shed
Friday	9:00 AM	12:00 PM	Shed cleanup Last Friday of each month	
Monday, Wednesday, Friday	8:30 AM	12:00 PM	General woodworking and community projects	Green Shed
Monday - Friday	8:30 AM	12:00 PM	Vehicle restoration	Metalworking bay



Shed Contacts

Position	First Name	Surname	Phone	eMail / web
Management Committee	-			
President	Phil	Batten	0418 715 004	Shedwest.President@gmail.com
Vice President	Mike	Symes	0406 183 431	Shedwest.Pres@gmail.com
Secretary	Jim	Watters	0414 643 639	Shedwest.Sec@gmail.com
Treasurer	Shyam	Verma	0412 669 565	Shedwest.Treas@gmail.com
Committee	Ian	Boudry	0487 420 433	iboudry@gmail.com
	Neil	Rogers	0439 444 018	neiltrogers@optusnet.com.au
	Gerald	Barber	0418 763 637	gerald.barber1@gmail.com
	Gavan	Clarke	0427 171 041	gavan@seehills.net
	Doug	Wait	0418 721 472	dwait@bigpond.net.au
	David	Arnold	0477 300 237	arnoldda@optusnet.com.au
	Stuart	Reed	0404 008 625	stu.reed@outlook.com
	David	King	0417 639 337	dave@thekings.id.au
	-			
Shed Ops Subcommittee	Neil	Rogers	0439 444 018	neiltrogers@optusnet.com.au
	Doug	Nissen	0412 324 023	dougniss@tpg.com.au
	Howard	White	0404 936 462	howpen@tpg.com.au
	John	Lippiatt	0407 574 745	jelippiatt@gmail.com
	Ron	Williams	0479 084 056	willronchris@bigpond.com
	Warren	Cameron	0400 006 046	wm.cameron@bigpond.com
	Gavan	Clarke	0427 171 041	gavan@seehills.net
	Doug	Wait	0418 721 472	dwait@bigpond.net.au
	David	Arnold	0477 300 237	arnoldda@optusnet.com.au
	-			
	-			
Re-Development Subcommittee	Mike	Symes	0406 183 431	Shedwest.Pres@gmail.com
	Gerald	Barber	0418 763 637	gerald.barber1@gmail.com
	Chris	Young	0418 794 093	cgyoung@powerup.com.au
	Neil	Rogers	0439 444 018	neiltrogers@optusnet.com.au
	-			
	-			
Shed Supervisors	Neil	Rogers	0439 444 018	neiltrogers@optusnet.com.au
	Gerald	Barber	0418 763 637	gerald.barber1@gmail.com
	David	Brown	0421 594 362	dbrown55@bigpond.com
	Warren	Cameron	0400 006 046	wm.cameron@bigpond.com
	Gavan	Clarke	0427 171 041	gavan@seehills.net
	Alan	Ernst	0408 769 576	ernsts@bigpond.net.au
	Richard	Francis	0409 647 108	rwfran@bigpond.net.au
	Geoff	Haigh	-	big_jude@hotmail.com
	John	Lippiatt	0407 574 745	jelippiatt@gmail.com
	Doug	Wait	0418 721 472	dwait@bigpond.net.au
	Trevor	Ward	0408 678 134	t_j_ward@hotmail.com
	Ron	Williams	0479 084 056	willronchris@bigpond.com
	David	Arnold	0477 300 237	arnoldda@optusnet.com.au
	-			



Position	First Name	Surname	Phone	eMail / web
Vehicle Restoration Group Subcommittee	Doug	Wait	0418 721 472	dwait@bigpond.net.au
	Bruce	Woodhouse	0400 815 593	bmwood@bigpond.net.au
	-			
Special Roles	-			
Shed Office	Malcolm	Douglas	3878 2825	shedwest@bigpond.com https://shedwest.com/
Welfare Officer & Membership Secretary	Ian	Boudry	0487 420 433	iboudry@gmail.com
Shed Safety Officer	Neil	Rogers	0439 444 018	neiltrogers@optusnet.com.au
Induction Training	David	Brown	0421 594 362	dbrown55@bigpond.com
Maintenance Coordinator	Gavan	Clarke	0427 171 041	gavan@seehills.net
Community Projects	-			
Blue Shed Coordinator	Warren	Cameron	0400 006 046	wm.cameron@bigpond.com
Guest Speaker Program and Library Contact	Chris	Wright	0409 278 439	chrisjoan72@yahoo.com.au
Afternoon Tea Coordinator (Guest speaker Tuesdays)	Bob	Ada	0408 768 187	rada8858@bigpond.net.au
Shed Barbeque Coordinator (3rd Tuesdays)	Peter	Nisbet	0417 319 373	jnisbet@bigpond.net.au
Social Events Coordinator	David	King	0417 639 337	dave@thekings.id.au
Trotec Laser Coordinator	Ross	Monks	0407 032 282	ross@rossmonks.com
3D Printer Coordinator	Jim	Watters	0414 643 639	jjwatters@gmail.com
CNC Router Coordinator	Neil	Rogers	0439 444 018	neiltrogers@optusnet.com.au
Auditor	Tom	Usher	0435 119 992	tomusher197@gmail.com
IT Consultant / Web Site	Ray	Johnson	-	pamray19@tpg.com.au
Shed Trailer Coordinator	Phil	Batten	0418 715 004	phil.liz.batten@bigpond.com
Newsletter Editor	David	Arnold	0477 300 237	arnoldda@optusnet.com.au
Communty Liason Officer	Jim	Watters	0414 643 639	Shedwest.Sec@gmail.com
	-			
Special Interest Groups	-			
Leatherwork	Alan	Ernst	0408 769 576	ernsts@bigpond.net.au
Wood Turning	Gavan	Clarke	0427 171 041	gavan@seehills.net
500 Cards	Ross Phil	Monks Batten	0407 032 282 0418 715 004	ross@rossmonks.com phil.liz.batten@bigpond.com
	-			
	-			
	-			



Mens Sheds

Men's Sheds	Address	eMail / web
Bellbowrie Men's Shed	55 Priors Pocket Rd Moggill QLD 4070	FaceBook: Bellbowrie Mens Shed
Indooroopilly Men's Shed	60 A Stamford Rd Indooroopilly QLD 4068	http://www.indroshed.org.au/
Centenary Suburbs Men's Shed	125 Monier Road Seventeen Mile Rocks QLD 4073	http://www.csms.org.au
Oxley Men's Shed	18 California Rd Oxley QLD 4075	FaceBook: Oxley Mens Shed
Ashgrove – The Gap Men's Shed	98 Yoorala Street The Gap QLD 4061	https://www.ashgrovetheshed.com/
Ipswich Men's Shed	34 Mining Street Bundamba	https://ipswichmensshed.org.au/ Facebook: Ipswich-Mens-Shed-Inc
Boonah Activity Shed	-	FaceBook: Boonah Activity Shed