



The Shed Newsletter

The Newsletter of the Shed West Community Men's Shed (Inc) April 2024

What's been happening in the Shed?

Welcome to the first edition of the Shed Newsletter for 2024. Attempts to recruit a dedicated editor have been unsuccessful and hence the newsletter will be reduced to quarterly editions published by the Shed's Management Committee.

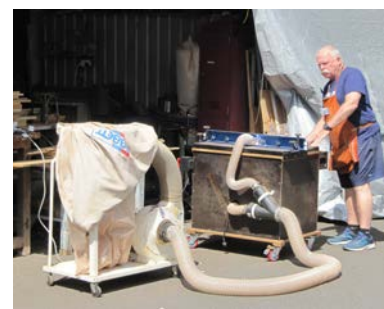
Communicating with members is important. The Newsletter and eMail broadcasts are the main ways that the members of the Shed can be kept up to date on events and activities. In this edition several major projects and events will be reported. These include a substantial project to build bespoke furniture for the Chapel Hill Community Kindergarten, and the construction of storage cabinets. The Shed's social program is underway managed by Dave King.

Negotiations concerning the redevelopment of the Shed site are continuing with key stakeholders. Action is slow but a brief update is provided here by Neil.

Our monthly BBQ has now been moved to the third Thursday of the month and thus follows our monthly Management Committee meeting. This change will provide an opportunity for members to be updated on the Management Committee deliberations.

What's in this Issue:

Latest update	2
Major Project at Chapel Hill	3
Shop Talk	5
ANZAC Poem	8
New Interest Groups	9
Land Rover Rebuild	10
Leather Group	11
Social Activities	12
Bunnings BBQs	13
Why Men's Sheds	15
Scheduled Events	16
Weekly Events	17
Management Committee	18



The Shed needs your help on the 1st, 2nd or 3rd May.

The task is to install new shelving in the timber shed.

Lunch will be provided - BBQ on Thursday 2nd

Latest ...

Report from Neil Rogers

Representatives of the Shed recently had a meeting with the Brisbane City Council design team to review their concept drawings for the re-development of the facilities of not only our Shed, but also that of the Bridge Club and Ewaste. There is still quite a bit of fine tuning to be done but I can declare that they are providing us with a full dust extraction system. The Blue Shed will get a fixed awning over the roller doors, the work area in front of the Main Shed roller doors will be enclosed with roll up screens making it more weatherproof. There are other items which will be disclosed when the details become more specific.

Update on Shed Projects

The final delivery of furniture to the Chapel Hill Kindergarten was well received. This was a large and time-consuming project but the level of workmanship that developed through the process raised our standard of construction from 'glue and screw' to 'mortice and tenon'.

Many were involved in the work with David Arnold steering the work and raising the bar of our capabilities. The storage cabinets are nearly completed with the remaining few to be placed in the Blue Shed. This will see a more organised capacity to store away tools



Speaker Program - Kenmore Library

Remember the Speaker Program runs on the first and second Tuesday of each month. The program for May includes Bruce Woodhouse (May 7) who will talk on "Major Charles Heaphy VC - Draughtsman, Surveyor, Artist, Explorer, Soldier, MP The first colonial soldier to be awarded the Victoria Cross" followed by Drs John and Brunton on May 14 who will discuss "Skin Cancer in S.E. Qld - What is your risk?"

and equipment.

The next project on the agenda is May 1,2 and 3 where we will be reorganising the Storage Shed with the new racking and shelving system. This will require many helpers over the 3 days as the shed needs to be emptied of its contents and shelving then installing the new system and re-instating the contents in a more organised manner. Lunch will be provided by the Shed each day for the willing workers.

Planning is underway to hold a Christmas Stall at Kenmore Village this year.



Community Outreach Projects

Shed West traditionally made contributions to good causes. Some time ago the Management Committee made a decision to revert from “cash” to “kind” support and (generally) restrict contributions to local community organization.

Local elected representatives were canvased. We were approached by the Member for Ryan’s office advising the Chapel Hill Community Kindergarten needed some help. After a visit to the kindy we supplied some possum and bird boxes. Our connection blossomed and we were approached about making some replacement children’s chairs. A visit from President Phil and discussions with Kindy Director Anna resulted in an agreement and revised, improved design.

Coincidentally a grant was available to the kindy through the local Federal Member's office.

The rest is history. Lots of good Shed work and cooperation chairs and other furniture were delivered.

On March 22nd the official hand over took place with lots of happy faces. A detailed account of this major project follows.

Major Shed Project Finished



Gerald Barber, Elizabeth Watson-Brown and Phil Batten with staff and children at Chapel Hill Community Kindergarten for the handover of furniture.

“The chairs are lovely, and they far exceed our expectations”

Anna Hutchings
Centre Director, Chapel Hill Community Kindergarten

In early April, after nearly five months of work, Shed West completed a major furniture project for the Chapel Hill Community Kindergarten. A large portion of this project was the construction of chairs for the children. The chair build team never seemed to be exactly sure how many chairs were required, as the number changed over time??? At any rate, the final delivery was thirty four (34) small chairs, plus four (4) slightly larger chairs for the teachers.

One of the new small chairs is shown at right alongside one of the forty year old chairs that it replaced.



Somewhere around fifteen members were involved in making the chairs off and on. The day to day level of participation fluctuated, with an average of about four or five members each week. On some days participation was up to eight members, but on others it was down to just three members.

However, for those members who participated on a regular basis, the project proved to be a very good opportunity to improve their woodworking skills, and to practice some real joinery.

All the chairs were built from recycled bed slats that had been previously donated to Shed West by a local bedding retailer.

The chairs were constructed using mortice and tenon joinery. The kindy logo was laser etched into the chair backs.

The chair construction utilised almost every machine in the shed, excepting the CNC router, and the woodturning lathes. The Festool Domino and the router table came in for particularly heavy use preparing the joinery.

The small chairs were funded by a community grant that was provided to the kindy by local federal MP Elizabeth Watson Brown.

The larger chairs were donated to the kindy by Shed West.

I would like to personally thank the small, but dedicated group of members who gave so generously of their time over an extended period to complete this outstanding community project. David Arnold



With the help of staff, the children at the kindergarten drew up these pictures which they presented to the Shed and to the local member Elizabeth Watson-Brown.



Shop Talk

Article by Howard White

Since the time of ancient Egypt artisans have used primitive glues based on animal and plant products to join wood to itself or other porous materials. These “organic” glues would, overtime, fail due to environmental conditions.

However, with the coming of the early 20th Century came interest in the development of longer lasting synthetic glues with increased resistance to heat and water. This made them more suitable for furniture assembly and veneering.

Nowadays glues can be grouped into two broad categories: thermosetting and thermoplastic. Thermosetting glues such as epoxy, resorcinol and urea formaldehyde require heat and a chemical reaction (which help to generate that heat).

Thermoplastic glues are condensation polymers which require evaporation of a “solvent” (typically water) to cure. These glues include the majority of white and yellow glues we see used extensively in cabinetmaking. The photos to the side show a range of glues typically used in cabinetmaking today.



Factors which will dictate which glue is most suitable for the task at hand include: wood type (oily or otherwise), environmental factors such as temperature, humidity and water resistance drying time, open (or working) and clamping time and strength of bond.

While there is an ever-increasing range of glues for specific applications coming on the market e.g., CCA, melamine, glues for vertical use, and hot melt glue. I will quickly discuss the four types of glues most commonly used for cabinetmaking.

YELLOW GLUE

The yellow glues I use (Titebond 2 and 3) are aliphatic resins and are essentially all-purpose glues. Because they are cross-linked polymers they are generally stronger than most white PVAs.



Yellow glues have some drawbacks. They have a tendency to “creep” and so are not ideal for veneering as they may open up at the joints in the veneers over time. Another important consideration is open time and clamping time. Titebond 2 (and to a lesser extent Titebond 3) have a relatively short open time which becomes critical in difficult or intricate clamping situations such as in chairmaking. However, short clamping times may be an advantage in some situations.

Titebond 3 (used extensively in the Shed) is not an aliphatic resin but exhibits many of the characteristics of ARs. Virtually waterproof it is an excellent use for external joinery. It has a longer open time than most yellow glues, but as a consequence has longer clamping times (I suggest 1½ to 2 hours minimum). Another drawback is that it has a darker cured glue line than yellow glues which might be problematic when gluing light-coloured timbers.



WHITE GLUE

White PVA glues are best used for bonding simple wood and craft projects. It can remain slightly pliable when dry in warm weather and so can be subject to creep.

POLYURETHANE GLUE

Polyurethane glues have gained acceptance because they are waterproof (above water line), are slow setting (hence longer open time), and have higher strength than some PVAs. Polyurethane glues cure in the presence of moisture, the glue should be applied to one surface only with the other surface dampened slightly with a wet cloth before clamping the two pieces together. Like yellow glues polyurethane glue should be used on perfectly smooth surfaces for best bonding strength. Always apply it thinly.



A significant drawback of using polyurethane glue is its tendency to “foam” outside the joint. This foam is not particularly hard so polyurethane glue should not be considered gap filling as some writers suggest.

A word of caution always wear gloves when using polyurethanes as it can leave fingers blackened for a week or so!

EPOXY GLUE

Epoxy has incredible holding strength, is waterproof and has excellent gap-filling capacity – it will bond almost all surfaces and once completely cured it will not dissolve or soften. Epoxies are available for different curing times but shorter times usually result in lower overall bond strength.

Because of their gap filling qualities epoxies are the go-to glue in boat building as they will maintain their strength and integrity in filling gaps up to 3mm wide. They are best applied to surfaces that have been roughened slightly. Consequently, only moderate pressure should be applied when clamping to avoid squeeze-out.



Thickeners such as fine wood dust can be added to rectify mistakes and repairing, etc. Adding colours such as aniline dyes to match wood colour will help to hide glue lines.

Because epoxies depend on heat for curing it is important to prepare the mix to dissipate any heat generated by the chemical reaction. It is therefore advisable to mix the individual components on a broad open surface such as a paint tin lid rather than mixing in a small container.

HIDE GLUE

Hide glue made by rendering hide, hooves and other animal parts is the oldest glue still in use. In the past hide glue was available in crystal form and mixed with water over a broiler. In today's setting hide glue is available in "ready-2-go" squeeze bottles.

The difficulty with this type of glue is its reversibility. It will soften and release in the presence of heat and water. These properties can be troublesome in general cabinetmaking, but are useful in certain other situations.



Antique chair makers in particular used hide glue to enable quick separation of parts and application of new glue when making repairs. It is easier and cheaper to repair chairs than remake broken components. Musical instrument makers and Conservators use high glue regularly for the same reasons.

Considerations when contemplating this type of glue is its comparatively long open time, a benefit when engaged in complex glue-ups, e.g., chair making. Other uses for hide-glue include veneering and "rub" joints for attaching glue blocks to tabletops and draw stops.

It is invisible under most finishes and cleans up with water.

Product Sources

Titebond glues are available from the following suppliers:

Locally from Paddington Hardware, Woodworking Machinery Plus, Sumner Park and Carbatec.

Online from Carbatec and Timbercon.

There may indeed be others.

Fact Is Stranger Than Fiction

*Australian ANZACS stood shoulder to shoulder
They stood tall and proud
On the wooden wharf at Brisbane, 1941,
In full Australian Army uniforms,
With .303 rifles at the ready,
They knew that these were not for sport,
Waiting, waiting for their troop transport
To ship them
Half-way-round the globe.*

*"Where are we going?" He asked the white
soldier standing near.
"No one knows mate, and in any case it's on a
'Need to Know' basis, and, apparently,
We don't need to know!"
When they arrived
After about a month at sea,
They were allowed to know,
And could plainly see
That this is Tobruk
An Allied port in the Middle East.*

*As part of the 9th Division,
Australian Infantry Forces,
Bill had been one of the first away,
After signing on back in Brisbane,
The "Big Smoke".
He was barely 19 years of age,
And had worked mostly as a drover
On cattle stations over
Birdsville, Bedourie and Boulia way.
Bill did not have a surname,
Not a white-man's surname anyway.*

*When Bill came to enlist
He did not have a Birth Certificate,
But the recruiting Warrant Officer
Looking over his short list of names,
Did not seem to care
And simply said,
"Can you shoot a rifle, son?"
To which Bill replied,
"Since the age of nine.
I once put 2 bullets into the one hole
And that is NO BULL!
It was with a .22 from 25 yards,
With a grouping of 3."*

*The Warrant Officer just laughed,
"Well we will see what you
Can do with a .303!"*

*"What is your surname son?"
"ALLAN", came the snappy reply,
Bill was happy that on the way
He had stopped at the Brisbane GPO,
He had looked up the telephone book,
"ALLAN", was the first surname he saw,
So thought he would adopt it anyway!
Then the Warrant Officer snapped:
"From now on Private ALLAN, you have an
Army Number, QX4184
And don't you ever forget it!"*

*Fast-forward nine months on,
A daily ration of tinned bully-beef,
Red desert sand,
Mixed with a mouthful of flies,
All washed down with a pannikin
Of black billy- tea.
The Aussies had well and truly "dug-in".
The screaming Stuka dive bombers,
Diving day and night,
Made the Aussies dig in with all their might.
The enemy had given them a name:
"RATS of TOBRUK".
This WAR was NOT a game,
The Diggers did not seek fame,
But adopted the name:
"RATS of TOBRUK"
As badge of honour worn with ease,
A shield, if you please,
A shield from the ever present enemy!*

*At 1700 hours sharp
Young Bill was sent out as part of a daily
Patrol to retrieve the
Dead and wounded.
But, the enemy had booby- trapped
A Digger's body with a land mine!
Three were killed there and then,
Young "JOHN", a farmer from Gympie,
Big "BRUCE", the Bren-Gunner from Boonah
Tall "TEX", not sure where "TEX" was from?
Then QX4184 lay mortally wounded with
Shrapnel in his brain.*

*Holding back tears
A merry- go-round of memories
Came flooding back.
Once a boxer in a touring troupe,
Ten quid was his prize in the ring
For taking on all comers
Black and white,
Sometimes four fights in one night!
But he struggled to bring
That last cigarette to his lips.*

*Convolutions of time,
Convolutions of the mind,
Convolutions of tribal memories perhaps?
Embers of those campfires
Were warm on winter nights.
Now Bill felt nothing
Between his cold blue fingers,
As the cigarette burns
Down to the end.*

Based mostly on TRUE events, in Memory of Private QX4184 a "RAT of TOBRUK".

Original poem by Noel Rush,
noelwrush@gmail.com



New Interest Groups

One measure of the health of any men's shed is the variety of interests pursued by members at the shed - shed members sharing skills and enthusiasm. Interest groups don't have to be huge in terms of participant numbers, but what counts is that a few people form a core of expertise (or, at least, the determination to learn), and that the group welcomes others, thus attracting new members to the shed.

Carpentry, cabinetry and woodturning have long been popular at sheds, but there are so many other opportunities waiting for someone to champion their introduction.

If you are of the opinion that you'd be likely to attend the Shed more often if there was an interest activity that aligned with your interests happening, then why not consider inserting a note in a future newsletter, asking for fellow shed members to make themselves known to you if your idea for a new interest group appeals to them.

Then, call a meeting of those who respond and discuss plans. If your proposed new interest group might need support from the Management Committee (MC) then write a brief proposal outlining the actions agreed between you and your (new) group. The MC's job is to find ways to enthuse activities at the shed, so make your case! Don't be shy.

Here are two ideas that I've been mulling over for a while:

1. An electronics interest group and,
2. A orchid growers' group.

If anyone is interested in the above, drop me a line, or just hunt me down for a chat.

Doug Wait dwait@bigpond.net.au

Ollie - Series 2A Land Rover Rebuild

Bruce Woodhouse reports:

Considerable progress has been made with Ollie's rebuild since the last newsletter. At that time, we had just completed overhauling and reinstalling the engine. Since then we have:

1. Overhauled and reinstalled the clutch, gearbox and handbrake.
2. Run new brake lines, clutch lines and installed the master cylinder.
3. Reinstalled the bulkhead and the accelerator, brake and clutch pedals.
4. Refurbished and reinstalled the steering column, steering wheel and direction indicators.
5. Refurbished the carburettor, manifolds and fuel tank.
6. Run the new wiring loom and overhauled the instrument panel.
7. Continued stripping, repairing and painting body panels.

With the engine, gearbox and both diffs/axles/hubs/brakes overhauled and back in place, we have completed all major work on Ollie's four main mechanical components. Work activities are now concentrated on two areas – refurbishing, replacing and reinstalling the many smaller mechanical, electrical and hydraulic items, and preparing, painting and reinstalling some 20+ body panels. In March we secured another tub (the back end of Ollie) which is in better condition than the one donated to us last year.



Over the past week, the tub moving crew assisted with a trial fit up of the 'new' tub, floor panels, tunnel covers and seat box to ensure we have all parts fit correctly prior to further painting.

Following the trial fit up, Russ and Sim commenced dismantling and cleaning the 'new' tub in preparation for painting. Russ claims expertise in this type of work, having already spent many hours preparing the first tub before we abandoned it in favour of the latest one.

You may also have seen Doug working on his 'pallet on wheels' project. Taking a leaf out of Martin's book on how to refurbish a Land Rover tub, Doug made a moveable frame that will support the tub, both in standard and upside-down mode, whilst it is being prepared for painting.



The Leatherwork Group

On Monday afternoons, an active group of Shed members busy themselves with the cutting, stitching and edging of leather. The leatherwork group have been busy with personal projects some of which are shown in the accompanying photos.

Firstly, Greg is busy with lots of stitching to put together a briefcase. This will keep him busy for quite a while.

John has been working with a handbag insert and is now designing and making a leather outer.

Baden has taken on plaiting belts and in the photo is busy stretching, thickening and bevelling the leather for another belt. This is quite a tricky job to ensure you do not cut the lace into many smaller pieces.

For those interested in participating and learning leatherwork contact:

Alan Ernst
0408 769 576
ernsts@bigpond.net.au



Social Sorties at Shed West

Shed West resumed holding a monthly social trip in August 2023 with a focus on providing some interesting (but more importantly, enjoyable) excursions for all its members. The Social Sorties are planned to happen on the last Wednesday of each month – but are subject to change if needed. We have, where possible, included outings so all levels of personal mobility can be accommodated. Importantly, we have also opened the events to wives, partners and/or ‘significant others’.

Past Sorties: The ‘Social Sorties’ until now have included visits to:

- Straddie Brewing Company on Stradbroke Island
- Toowoomba Cobb & Co Museum which was timed to include seeing some of the parks during the Carnival of Flowers



- Bribie Woodcrafters during their Exhibition Week
- A day out on the Brisbane River Cat and a lunch at the Ship Inn and,
- April was a visit to the Caboolture Warplane Museum. This trip, was attended by 15 of our members and everyone found the morning very interesting. It’s amazing what they can cram into one hangar!!

Feedback has been very positive for all the outings, and we would love for more members to attend these days and participate. As the old saying goes, ‘the more the merrier!!’

Sign-on sheets: Each month we have sign-on sheets located in both the Blue and Green Sheds. Those interested in attending are encouraged to put your details down on these sheets. The sign-on form is our ‘source-of-truth’ for final numbers in regards to who is coming and what their needs are for the day.

UPCOMING SORTIES:

May: The Maleny Wood Expo is held from 4th to 6th of May, and we had planned to hire a bus to take members to Maleny. As there was not sufficient interest in the bus hire (only one person), and even though there was some who had indicated they were going to drive to Maleny, we have cancelled the Social Sortie for this month.

June: Who let the dogs out!!! Who, who, who who!!!! For June’s Social Sortie it’s going to be a bit different. We’re going to include our Furry Friends with a get-together at the off-leash, fenced dog park, which is situated off Kensington Circuit, Kenmore Hills. As usual, wives & significant others are absolutely welcome to come along. The day will be held on June 26th from 12 midday and encompass a group bar-b-que lunch. So everyone is welcome. Also, please be aware that you don’t need to own a dog!!!



July: The Social Sortie for July will encompass a look at the Cross River Tunned Information Centre followed by a lunch (venue TBC). This is planned July 31st, but the date may change – so keep an eye out for more details.

For the months after July, a planned program will be forthcoming, *but if you have any ideas or suggestions, please let Dave King know by email at shedwest.social@gmail.com.*

Bunnings BBQ

Over the past six months the Shed has participated in Bunnings Sausage Sizzle program.

These BBQ sessions have been beneficial in at least two ways. First, the sessions have been profitable with profits going to consolidate the Shed's funds, pay insurance and utility costs and to support the range of projects in which the shed is currently involved.

Second, the sessions have been a great experience to manage the logistics and to foster social interaction among those members who participated. Additionally, the profile of the Shed in the community is enhanced.



Members participate in one or two shifts. The first shift starts at the Shed about 6am on a Saturday or Sunday morning to organise food. Bunnings opens at 7:00 and by 7:45 the BBQ is up and running for the early bird customers. The second shift starts about 11:15 and wraps up at 4pm.

It is clear that the cooks enjoy the opportunity to display their culinary skills.

The initiative has been run by "Captain" Phil. Bunnings nominates a key person as "Captain". Our next opportunity will be Friday 26th July. Notices will go out before then to seek volunteers.

Storage Cabinets

David Arnold reports: In March this year, Shed West completed the construction of twelve modular storage cabinets for both the Green Shed and for the Blue Shed. The timeline of this project may be of interest to members.

June 2022

A report was submitted to the Shed West Management Committee titled Proposals for Refurbishment At 98 Brookfield Road (Shed West Redevelopment Project Early Works). The report outlined various proposed measures to reduce clutter and congestion in the Shed West facilities at 98 Brookfield Road. These proposals included:

1. Improved management of tools and equipment, including disposal of surplus items

2. Fitting upgraded castors to portable equipment for easier movement
3. Construct modular storage cabinets to replace the assortment of drawers, cabinets and shadow boards
4. Upgrade the existing workbenches to a standard more suited to joinery work
5. Seek grant funding to install a fully ducted dust extraction system to replace the existing small portable units
6. Revamp the shed layout taking advantage of the increased available floor space provided by a ducted dust extraction system.

Construction of storage cabinets was approved in principle by the Management Committee.

July 2022

A detailed proposal with plans and costings was submitted to the Shed West Management Committee for the construction of modular storage cabinets. The Management Committee approved a budget of \$2900 from Shed funds for the construction of three cabinets.

August 2022

Detailed plans, cutting lists, and control budget were finalised for the construction of three cabinets.

September 2022

Precut plywood was delivered, and construction got under way.

Funding for further cupboards was applied for from the Lord Mayor's Better Suburbs Grant Program.

October 2022

First cabinet completed.

December 2022

Third cabinet completed.

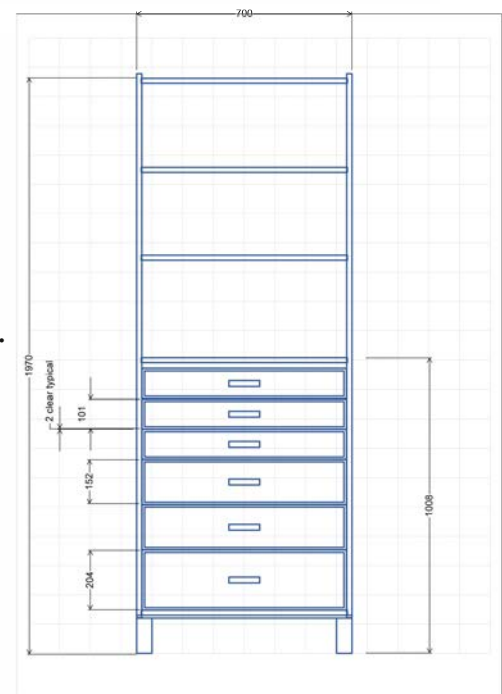
Shed West were awarded \$6,499 under the Lord Mayor's Better Suburbs Grant Program for the construction of storage cabinets.

February 2022

Detailed plans, cutting lists, and control budget were finalised for the construction of nine cabinets using the Better Suburbs Grant funds.

March 2023

Precut plywood delivered for the first five cabinets to be built under the Better Suburbs



Grant. Construction of the cabinets commenced.

August 2023

First five cabinets completed.

July 2023

Precut plywood for remaining four cabinets delivered.

March 2024

The last of the nine cabinets cabinet funded by the Better Suburbs Grant was completed and installed in the Blue Shed. This made a total of nine cabinets installed in the Green Shed, and three cabinets installed in the Blue Shed.



Completion of this major project has been a long hard slog. I would like to personally thank those who turned up to help, especially those who stuck it out for the long haul. The same dedicated few who would turn up on Tuesdays to build the kindy chairs would often back up on Thursdays to build the cabinets. Looking back at the goals proposed in June 2022, only Items 2 and 3 have been achieved so far. Item 1 is still very much a work in progress, and the success of Item 3 will be measured by it. Items 5 and 6 now seem to be a possibility in the foreseeable future. Whether I have the energy left to champion Item 4 remains to be seen... David Arnold

Why Men's Shed?

The slogan adopted by the Australian Men's Shed Association (AMSA) for men's sheds is "Men don't talk face to face, they talk shoulder to shoulder"

There are over 1200 sheds in Australia affiliated with the AMSA. The purpose of men's sheds is to promote, advance, and support an effective and sustainable Men's Shed movement by bringing men together enabling them to lead a positive lifestyle while strengthening communities. Men's shed movement is a health initiative that provides meeting places where men, particularly those retired, can find social support, companionship and camaraderie. Through the activities of men's sheds they enable men to feel positive about themselves through their community outreach activities.



Scheduled Events

Date	Start Time	Finish Time	Event	Venue
21 February	9:00 AM	12:00 PM	Management Committee	Kenmore Library
20 March	9:00 AM	12:00 PM	Management Committee	Kenmore Library
17 April	9:00 AM	12:00 PM	Management Committee	Kenmore Library
7 May	2:00 PM	4:00 PM	Speaker Session Bruce Woodhouse	Kenmore Library
14 May	2:00 PM	4:00 PM	Speaker Session Dr Johns & Dr Brunton	Kenmore Library
15 May	9:00 AM	12:00 PM	Management Committee	Kenmore Library
19 June	9:00 AM	12:00 PM	Management Committee	Kenmore Library
17 July	9:00 AM	12:00 PM	Management Committee	Kenmore Library
21 August	9:00 AM	12:00 PM	Management Committee	Kenmore Library
18 September	9:00 AM	12:00 PM	Management Committee	Kenmore Library
16 October	9:00 AM	12:00 PM	Management Committee	Kenmore Library
20 November	9:00 AM	12:00 PM	Management Committee	Kenmore Library
11 December	9:00 AM	12:00 PM	Management Committee	Kenmore Library
22 October	2:00 PM	4:30 PM	Management Committee	Kenmore Library
5 December	12:00 PM	4:00 PM	Christmas Lunch	Jindalee Hotel

Note that monthly BBQs will be held on Thursdays, the day after the Management Committee meetings. BBQs start at 12:00 and will provide an opportunity for the Management Committee to discuss any issues.

Weekly Events

Date	Start Time	Finish Time	Event	Venue
Monday-Wed-Friday	8:00 AM	12:00	General Woodworking	Green Shed
Monday- Tuesday Thursday-Friday	8:00 AM	12:00 PM	Vehicle Restoration	Metalworking bay
Monday	9:00 AM	12:00 PM	500 Cards	Donga
Monday	1:30 PM	4:30 PM	Leatherwork Group	Blue Shed
Tuesday	8:00 AM	12:00 PM	Community projects	Green Shed
First and Second Tuesday	2:00 PM	4:00 PM	Guest speaker	Kenmore Library
Second Wednesdays	9:00 AM	11:00 PM	Operations Subcommittee	Donga
Third Wednesday	9:00 AM	12:00 PM	Management Committee	Kenmore Library
Thursday	8:00 AM	12:00 PM	Shed improvement projects	Green Shed
Thursday	8:00 AM	12:00 PM	Pyrography Group, Social Round table	Blue Shed
Third Thursday	12:00 PM	1:30 PM	BBQ and Social	Donga
Friday	9:00 AM	12:00 PM	Computing	Donga
Last Friday of Month	10:00 AM	12:00 PM	Shed Cleanup	Green Shed
Friday	1:30 PM	4:30 PM	Woodturning Group	Green Shed

Committee Membership & Responsibilities

Shed West is a community-based, non-commercial organisation that supports the health and mental wellbeing of men particularly seniors. The median age of its 120 members is 75. It provides opportunities for men to engage in social interaction and contribute to a range of community based projects. Shed West is affiliated with the Australian Men's Shed Association and shares its goal of supporting isolated men to become valued and productive members of the community.

President	Phil Batten	shedwest.president@gmail.com
Vice President	Gerald Barber	
Secretary	Jim Watters	shedwest.sec@gmail.com
Treasurer	Shyam Verma	shedwest.treas@gmail.com
Committee Member	Ian Boudry	
Committee Member	Gavan Clarke	
Committee Member	David King	shedwest.social@gmail.com
Committee Member	Stuart Reed	
Committee Member	Neil Rogers	
Committee Member	Mike Symes	
Committee Member	Doug Wait	
Committee Member	Bruce Woodhouse	

Operations SubCommittee

The operations sub-committee is responsible for the management of the Shed. This includes, maintenance and health and safety aspects.

Neil Rogers (Chair)	neiltrogers@optusnet.com.au
David Arnold	arnoldda@optusnet.com.au
Warren Cameron	wm.cameron@bigpond.com
Gavan Clarke	gavan@seehills.net
John Lippiatt	jelippiatt@gmail.com
Peter Merrell	petermerrell@aapt.net.au
Doug Nissen	dougniss@tpg.com.au
Ron Williams	willronchris@bigpond.com
Doug Wait	dwait@bigpond.net.au

Shed Supervisors

Supervisors are responsible, knowledgeable, and courteous individuals responsible for overseeing the day-to-day operations of the shed during open hours. They monitor safe practices and support members on the use of equipment. They are the go-to people when help is needed.

David Arnold	arnoldda@optusnet.com.au	Green Shed
Gerald Barber	gerald.barber1@gmail.com	Green Shed
David Brown	dbrown55@bigpond.com	Green Shed
Warren Cameron	wm.cameron@bigpond.com	Blue Shed
Gavan Clarke	gavan@seehills.net	Green Shed
Alan Ernst	ernsts@bigpond.net.au	Blue Shed
Richard Francis	rwfran@bigpond.net.au	Blue Shed
Geoff Haigh	big_jude@hotmail.com	Blue Shed
John Lippiatt	jelippiatt@gmail.com	Green Shed
Neil Rogers	neiltrogers@optusnet.com.au	Green Shed
Doug Wait	dwait@bigpond.net.au	Green Shed
Trevor Ward	t_j_ward@hotmail.com	Blue Shed
Bruce Woodhouse	bmwood@bigpond.net.au	Metal Workshop
Ron Williams	willronchris@bigpond.com	Green Shed

Other Responsibilities

The following members are point of contact of a range of special tools and functions.

Social Events Coordinator	David King	dave@thekings.id.au
Trotec Laser Coordinator	Ross Monks	ross@rossmonks.com
3D Printer Coordinator	Jim Watters	jjwatters@gmail.com
CNC Router Coordinator	Neil Rogers	neiltrogers@optusnet.com.au
Auditor	Tom Usher	tomusher197@gmail.com
IT Consultant / Web Site	Ray Johnson	pamray19@tpg.com.au
Shed Trailer Coordinator	Phil Batten	phil.liz.batten@bigpond.com
Newsletter Editor	-	
Community Liason Officer	Jim Watters	Shedwest.Sec@gmail.com
Leatherwork	Alan Ernst	ernsts@bigpond.net.au
Wood Turning	Gavan Clarke	gavan@seehills.net
500 Cards	Ross Monks	ross@rossmonks.com

Shed West Community Mens Shed Inc.
98 Brookfield Rd, Kenmore
PO Box 391, Kenmore, Qld 4069
shedwest@bigpond.com
ABN 38 009 395 013
www.shedwest.com

Shed West Community Men's Shed (Inc) is a registered charity and member of the Australian Men's Shed Association and the Queensland Men's Shed Association.



Note:

Our monthly BBQs have moved to the third Thursday of each month.

A special BBQ will be held on 2nd May for those working on the shelving project.

Regular Thursday BBQ will start on 20th June. Join in the conversations and enjoy Pete and Mick's cooking.

Excursions

Dave King is organising interesting outings that generally end up eating in some salubrious surroundings. Here in the Toowoomba excursion members enjoyed the hospitality of the Royal Hotel



Facilities

Activities are spread over three areas of the premises at 98 Brookfield Rd. The Green Shed hosts woodwork and includes wood turning lathes and a CNC Router among other normal workshop tools.

The Blue shed hosts the Trotec Laser, Leatherwork, and toy construction.

The metal workshop is the home for the rebuild of the Series II Land Rover affectionally known as Ollie. In addition card players and computer geeks work in the Donga.

