



HOLY CROSS BEREAVEMENT

Come join us as we work together
and share this journey.
All are Welcome.

Newly Bereaved

Are you grieving the loss of a partner? Struggling to find your way through daily life?

We all experience grief in our own unique way. When someone you love dies, your world suddenly changes, and you find yourself challenged to find new ways to live in it.

Beginning on Wednesday, April 1st, the Parish of the Holy Cross will be offering a **6-week support group for those who have lost a spouse or partner.**

Support can help and make a real difference. Connecting with others to share stories, learning ways to cope all while receiving comprehensive, evidence-informed bereavement support and education can help with the grieving process and to gain ways to move forward.

The group will meet for six (6) consecutive Wednesdays, April 1st - May 6th, from 1:30pm to 3:00pm in the Father Joe Room.

If you are interested in joining, or have questions, please contact Kelley in the Outreach office at 631-265-2200.

You must register before April 1st.



Food Drive 2026 Thank You

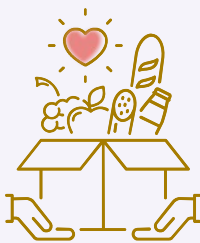
At a time when the need has grown for food assistance on Long Island, our generous community has come through again with their generous support of our Long Island Cares Food Drive. Below is an excerpt from a letter recently received from Long Island Cares.

"Thank you for your gift of 916 pounds of goods, baby supplies, personal essentials, and pet food received on 03/17/2026. Your generosity supports the 313,800 individuals, including 71,000 children, who are food insecure on Long Island."

"Your donation is vital to Long Island Cares carrying out its mission and continuing to help our neighbors in need. Rising cost in food prices has affected Long Island Cares' ability to procure food and supplies as effectively as we have been able to do in the past. Your gift helps to lessen the burden our fellow Long Islanders are experiencing right now and allows for peace of mind for individuals and families who do not know where their next meal is coming from."

***We are truly grateful and proud of our parishioners, who always go the extra mile to help those in need.
Thank you, as always, for your support.***

Parish Outreach



Outreach is currently in need of the following items for the food pantry.

The collection will be the weekend after Easter, April 11th & 12th .

**Pancake Mix - Syrup - Boxed Potatoes
Fruit in a Can - Rice - Bars of Soap**

Thank you for checking expiration dates before donating.

Thank you for your continued support!