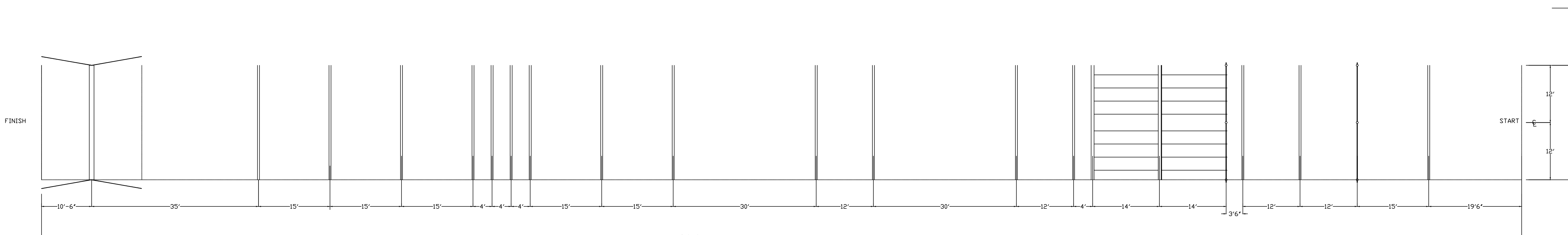
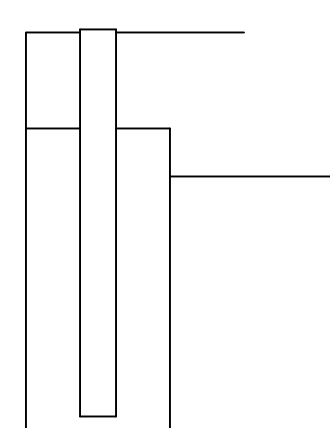
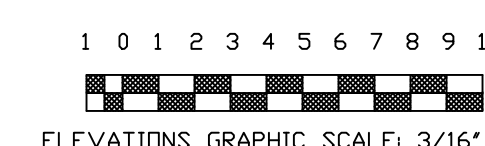
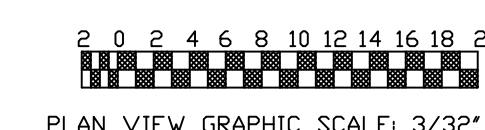
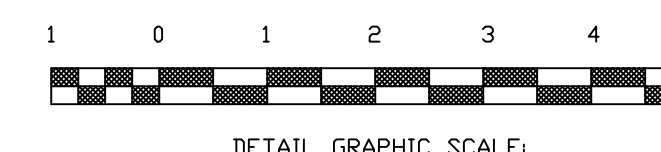


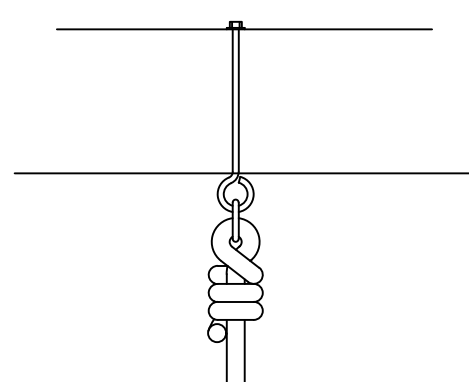
PLANNED SET UP



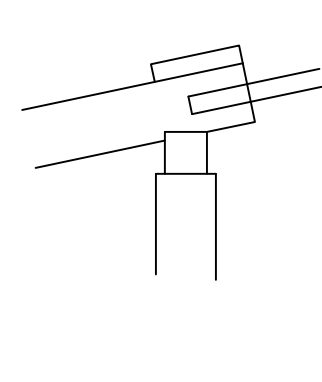
PLAN VIEW



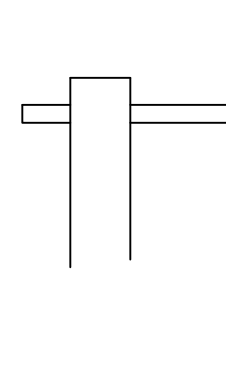
ROPE CLIMB DETAILS



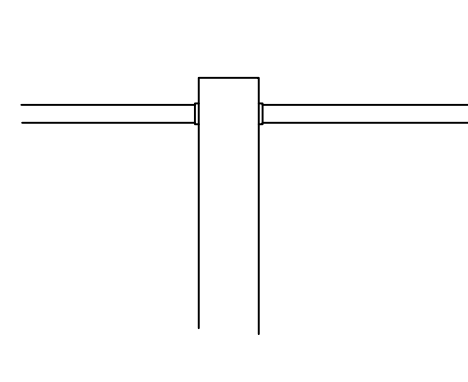
LOG WALL DETAILS



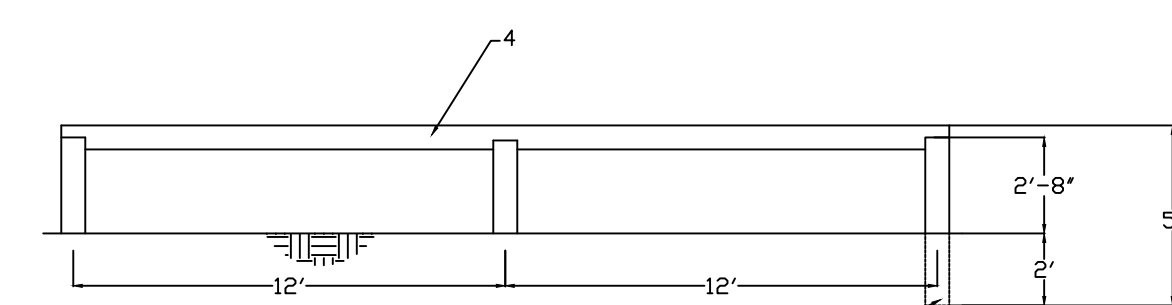
LOG WALKS DETAILS



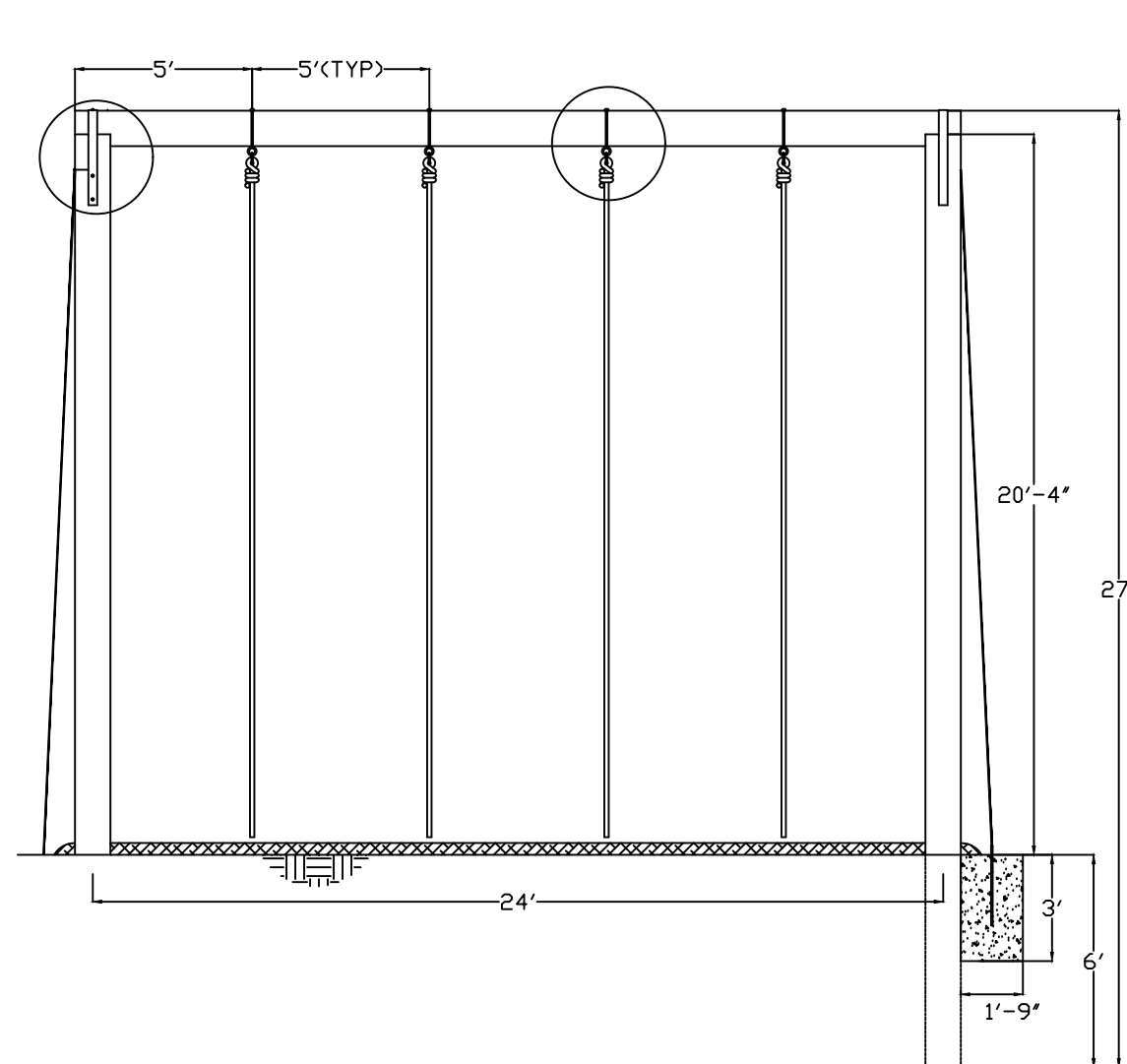
UP AND OVER BAR DETAILS



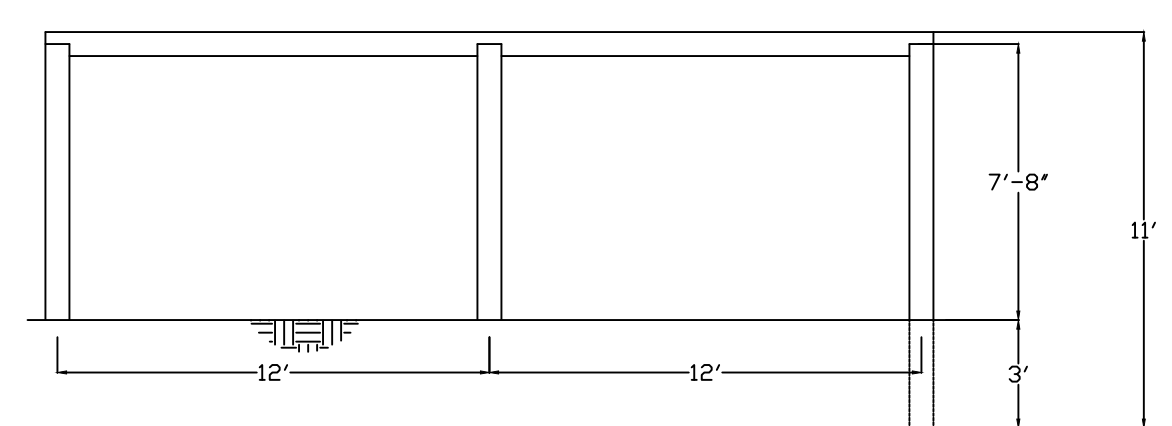
HAND OVER HAND BAR DETAILS



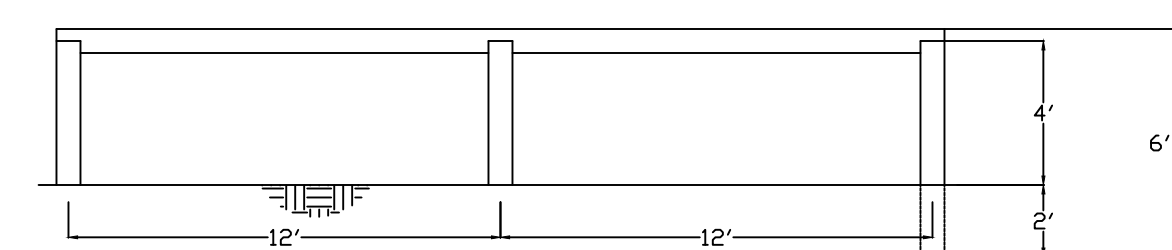
LOW JUMPS



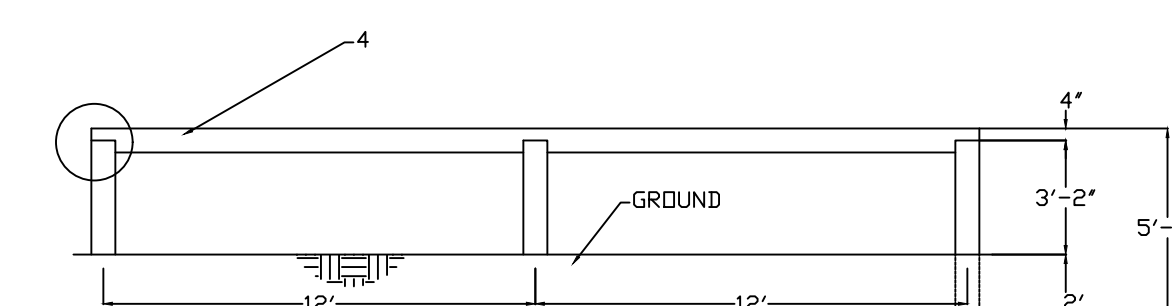
ROPE CLIMB (SIDE)



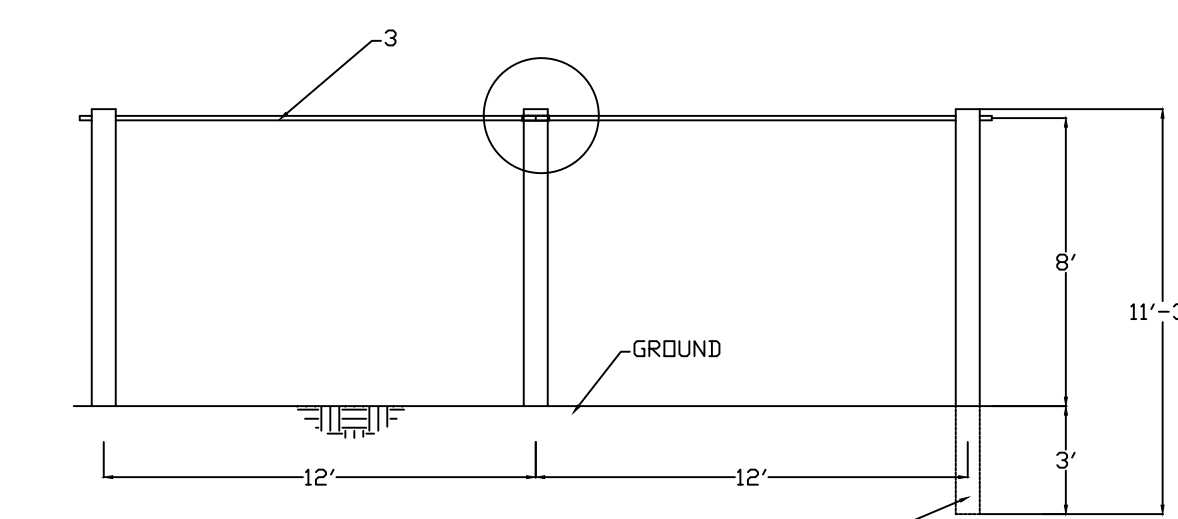
HIGH ROLL OVER LOG



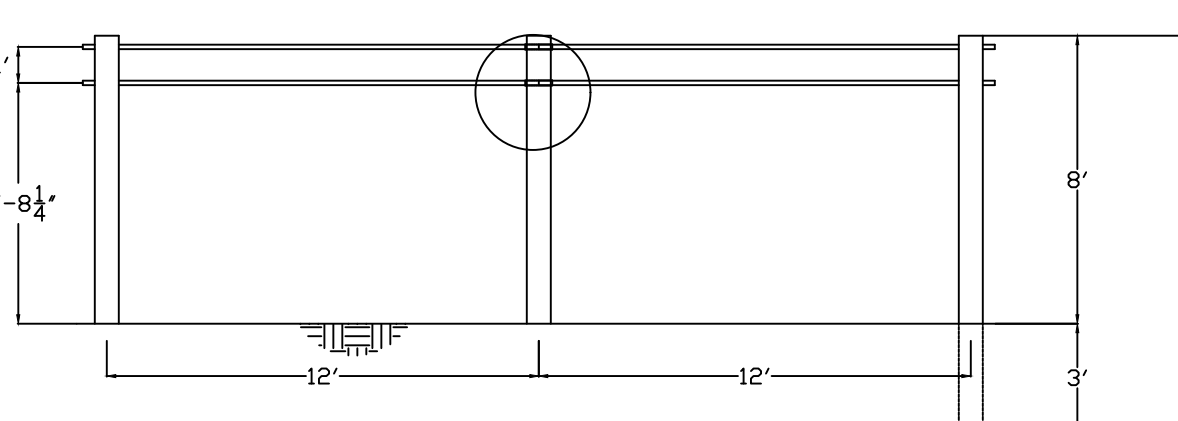
VAULT LOGS (4)



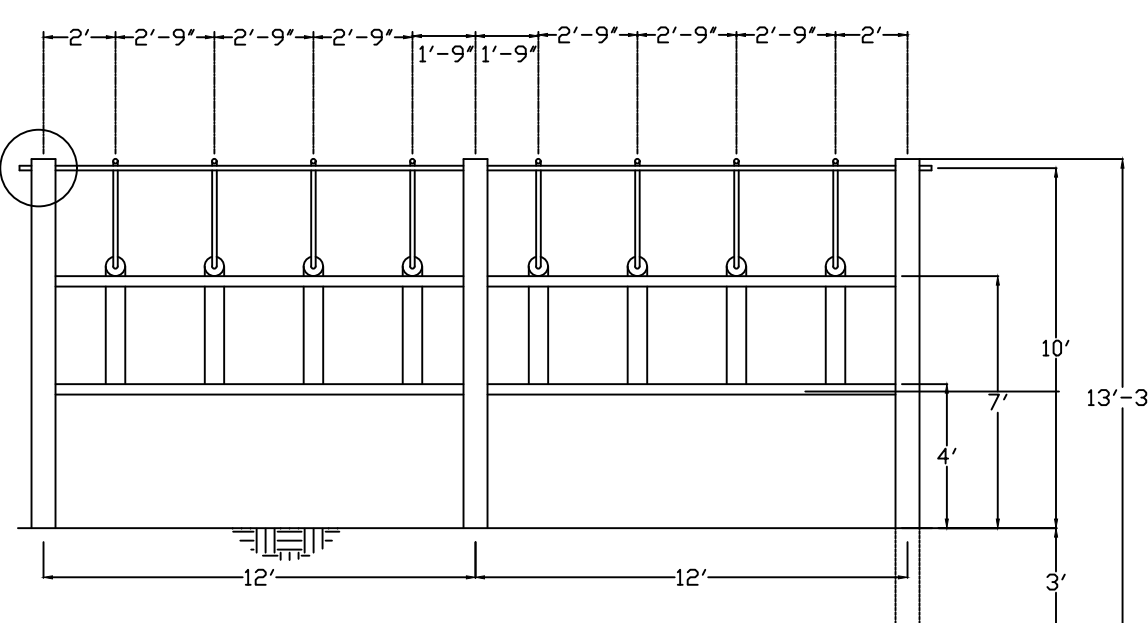
BALANCE LOG



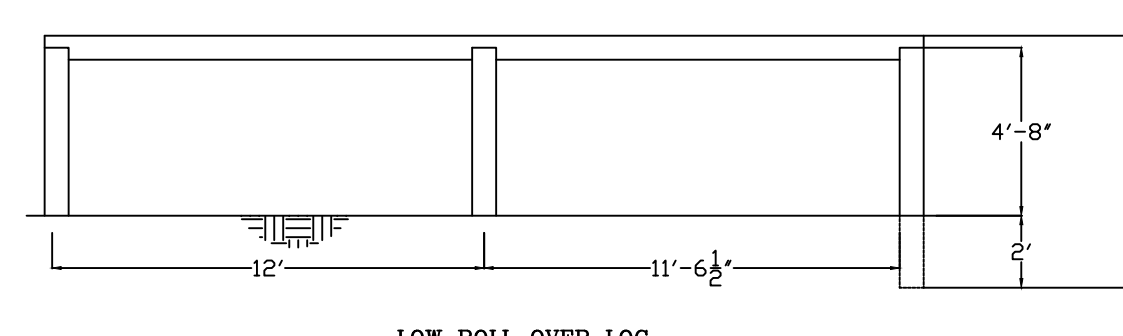
UP & OVER BAR



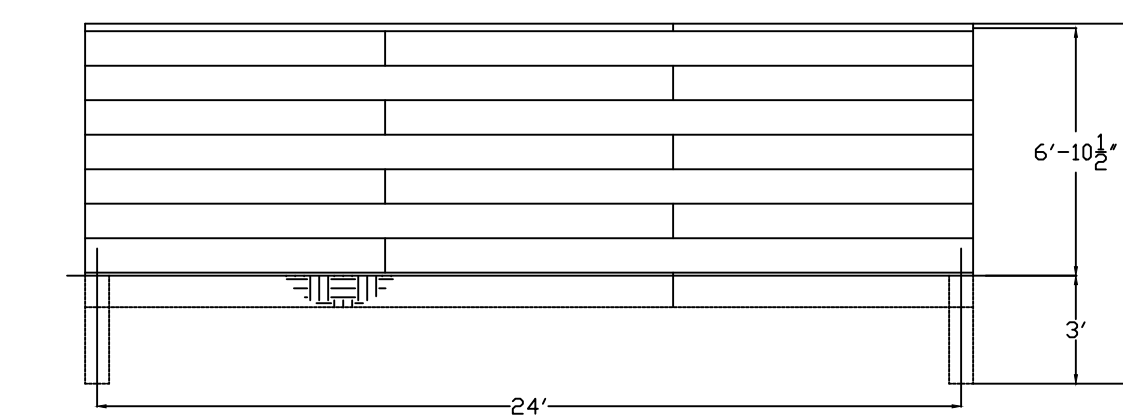
DOUBLE BAR



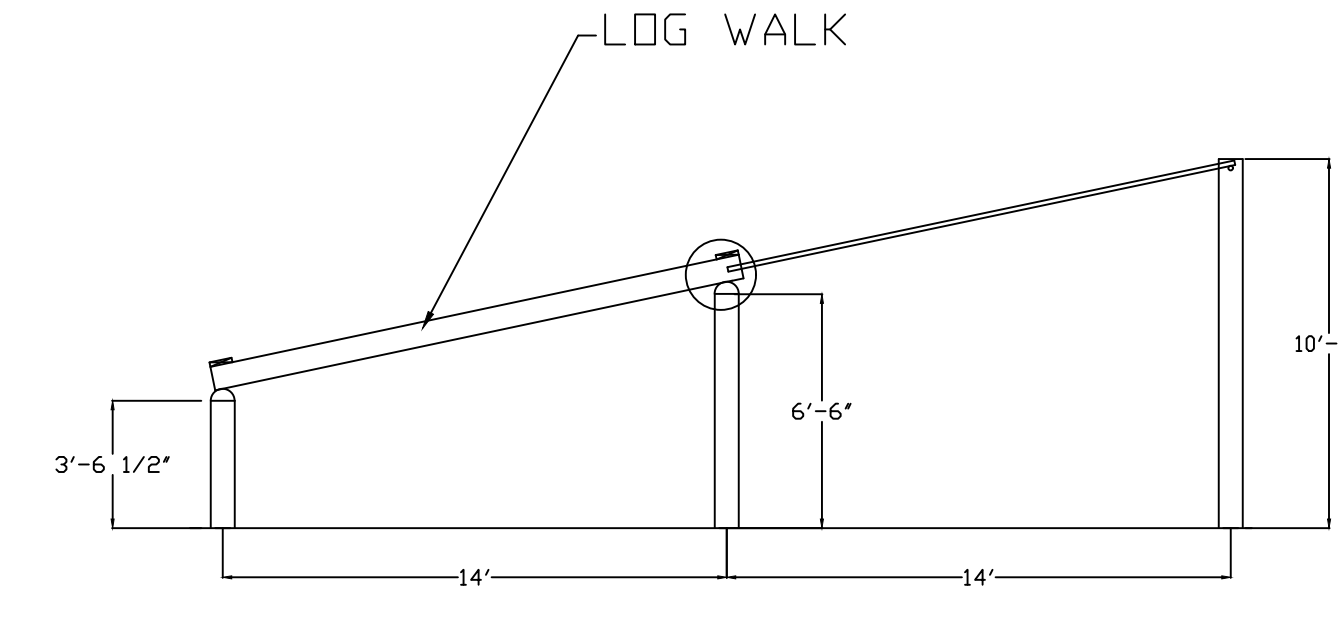
HAND OVER HAND PIPE & LOG WALK FRONT



LOW ROLL OVER LOG



LOG WALK



HAND OVER HAND PIPE & LOG WALK SIDE

MATERIALS LIST

SIZE	DESCRIPTION	QTY/ N	U/I	TTL QTY/P	U/PR	COST	REMARKS
3x12x16'	LUMBER, TREATED	672 BF	EA	14			LOG WALL
10'x8"Ø	POLE	40 LFT	EA	40 LFT			LOG WALL
16p	NAILS, GALV	14 LBS	5LB BX	3			LOG WALL
8'x8"Ø	POLE	24 LFT	EA	3			LOW ROLL OVER
25'x8"Ø	POLE	25 LFT	EA	1			LOW ROLL OVER
60p	SPIKE, RAIL ROAD	3	EA	3			LOW ROLL OVER
15'x8"Ø	POLE	45 LFT	EA	3			HAND OVER HAND PIPE
13'x1.5"Ø	PIPE, STEEL GALV	2	LFT	2			HAND OVER HAND PIPE
13'x1"Ø	PIPE, STEEL GALV	2	LFT	2			HAND OVER HAND PIPE
10'x1.75"Ø	PIPE SLEEVE, STEEL GALV	1	EA	1			HAND OVER HAND PIPE
16'x1.5"Ø	PIPE, STEEL GALV	8	LFT	8			LOG WALK
60p	SPIKE, RAIL ROAD	6	EA	6			LOG WALK
3x12x16'	LUMBER, TREATED	4	EA	4			LOG WALK
3x12x16'	LUMBER, TREATED	4	EA	4			LOG WALK
15'x8"Ø	POLE	8	EA	8			LOG WALK
14'x8"Ø	POLE	2	EA	2			LOG WALK
14'x12"Ø	POLE	2	EA	2			LOG WALK
13'x1.5"Ø	PIPE, STEEL GALV	4	LFT	4			DBL BAR
6'x1.75"Ø	PIPE SLEEVE, STEEL GALV	2	EA	2			DBL BAR
13'x1"Ø	PIPE, STEEL GALV	4	LFT	4			DBL BAR
13'x5"Ø	POLE	3	EA	3			DBL BAR
14'x5"Ø	POLE	3	EA	3			UP & OVER BAR
13'x1"Ø	PIPE, STEEL GALV	2	EA	2			UP & OVER BAR
6'x1.75"Ø	PIPE SLEEVE, STEEL GALV	1	EA	1			UP & OVER BAR
12'x8"Ø	POLE	3	EA	3			HIGH ROLL OVER
13'x8"Ø	POLE	2	EA	2			HIGH ROLL OVER
60p	SPIKE, RAIL ROAD	4	EA	4			HIGH ROLL OVER
13'x8"Ø	POLE	8	EA	8			LOW JUMPS (7)
12'x8"Ø	POLE	10	EA	10			LOW JUMPS (7)
60p	SPIKE, RAIL ROAD	16	EA	16			LOW JUMPS (7)
13'x8"Ø	POLE	8	EA	8			BALANCE LOG
12'x8"Ø	POLE	10	EA	10			BALANCE LOG
60p	SPIKE, RAIL ROAD	16	EA	16			BALANCE LOG
160'x2"	ROPE,	1	EA	1			ROPE CLIMB
26'x12"Ø	POLE	6	EA	6			ROPE CLIMB
12'x12"Ø	POLE	2	EA	2			ROPE CLIMB
60p	SPIKE, RAIL ROAD	8	EA	8			ROPE CLIMB
14'x1/2"Ø	EYE BOLTS W/NUTS & WSHR	6	EA	6			ROPE CLIMB
12'x24'x6"	SAW DUST & WOOD CHIPS	5.33 CU YD	CU YD	6			ROPE CLIMB
1/2"Ø	"O" RINGS, GALV	4	EA	4			ROPE CLIMB
1/2"Øx8"	ANCHOR BOLTS	4	EA	4			ROPE CLIMB
1/2"Øx14"	BOLTS W/WASHERS & NUTS	4	EA	4			ROPE CLIMB
90 LBS BG	QUICK CRETE	5.33 CU YD	BG	5.33 CU YD			ROPE CLIMB
1/2"Øx50'	GUIDE WIRE	1	LFT	1			ROPE CLIMB
90 LBS BG	READY MIX CONCRETE	2 CU YD	BG	2 CU YD			ROPE CLIMB
25'x8"Ø	POLE	1	EA	1			VAULT LOGS (4)
12'x8"Ø	POLE	12	EA	12			VAULT LOGS (4)
60p	SPIKE, RAIL ROAD	6	EA	6			VAULT LOGS (4)

ARCH./ENGR. BAY "D" ENGINEERS	ORGANIZATION XXXXXX	PROJECT / WORK REQUEST NO. XXXXXX	MARINE WING SUPPORT SQUADRON 274 2ND MARINE AIR WING MARINE CORPS AIR STATION, CHERRY POINT, NORTH CAROLINA
ARCH./ENGR. SEAL / LOGO	DRAWN BY SSGT L. L. JELKS	CHECKED BY	CONSTRUCT OBSTACLE COURSE
	SUPERVISOR		ARCHITECTURAL, SITE AND STRUCTURAL PLANS (PROPOSED)
APPROVED BY <i>[Signature]</i>	SIZE F	CODE IDENT NO. 1361	DRAWING NO. XXXXXXXXXX
ENCLOSURE BILLET / TITLE	DATE	SPEC FILE: A:\OBSTCLC.DWG	WORK REQUEST 981801
SCALE: AS NOTED	DATE DRAWN: 921004	SHEET: 1 OF 1	PLOT SCALE: 3/16" = 1'