

# Bismarck Sea data transcription

GeoCom Ltd

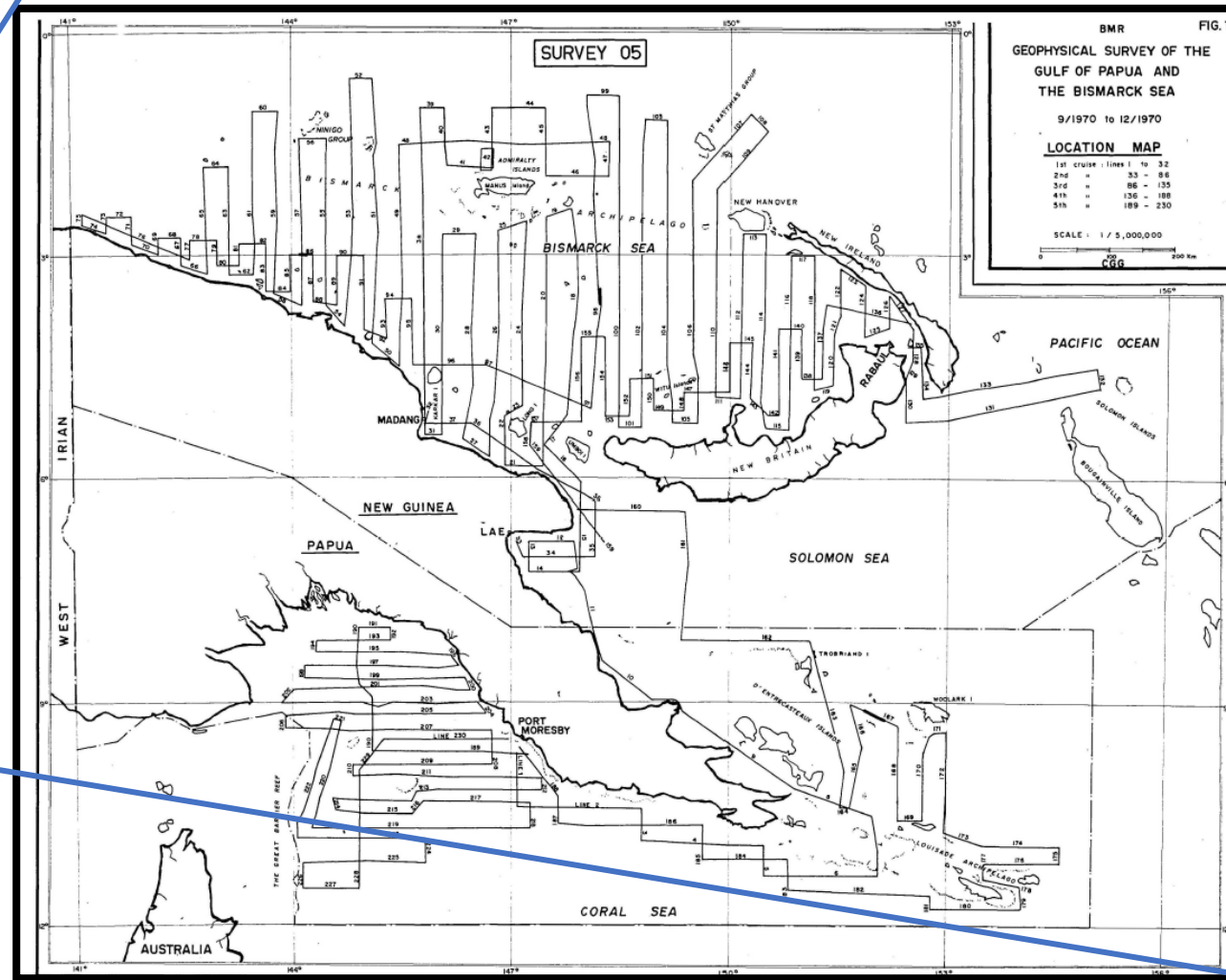
*Subjunctive Geo*



# Summary

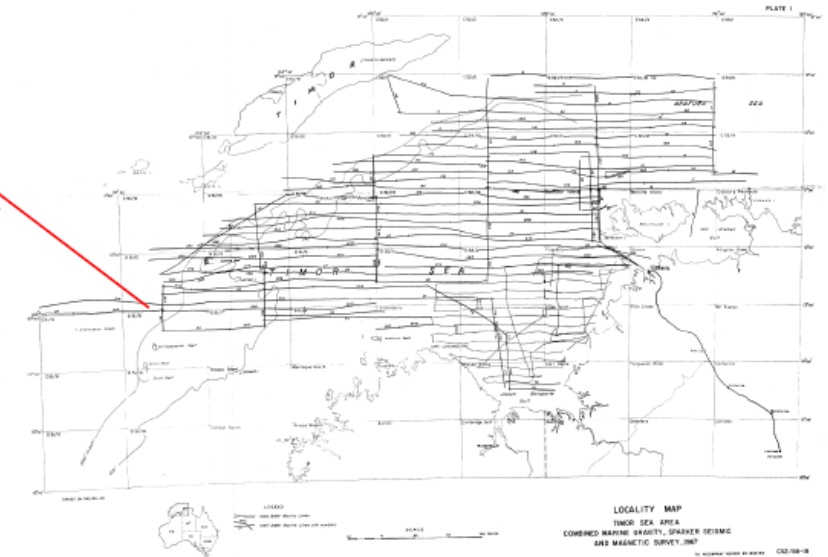
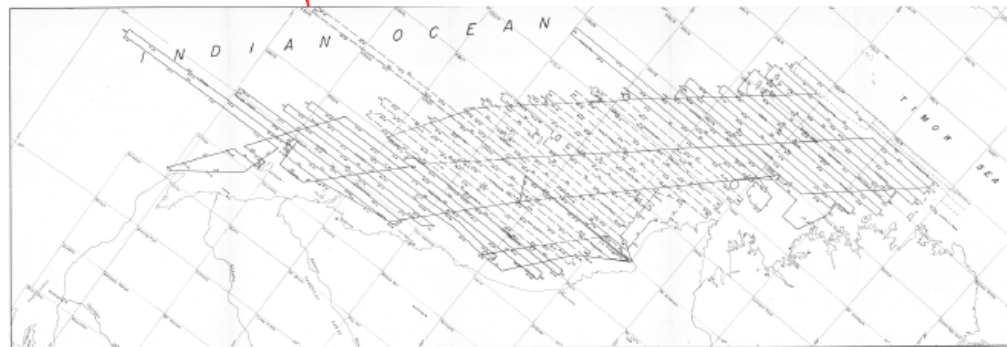
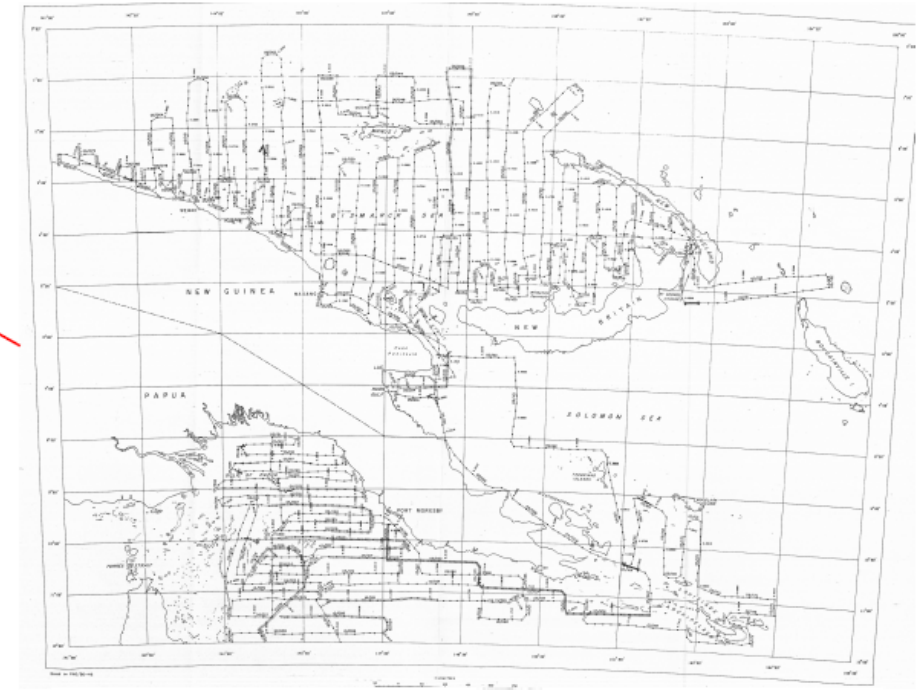
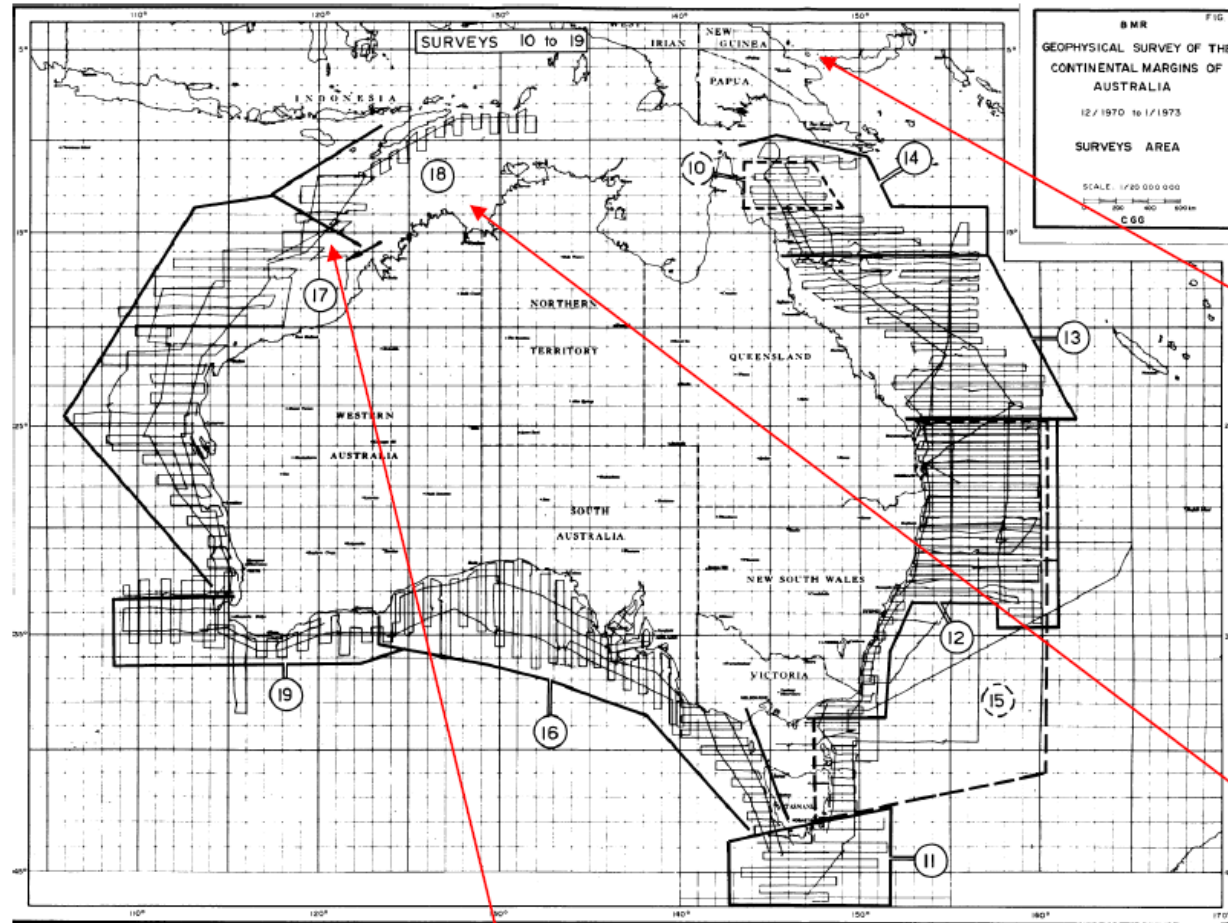
- Data in an area where only old scanned boat monitors available previously
- Multi-fold data suitable for modern seismic data processing
- Data useful for exploration for hydrocarbons, minerals and research studies
- No charge for data, only charge for transcription
- Government approval for release of data

# Bismarck Sea Survey



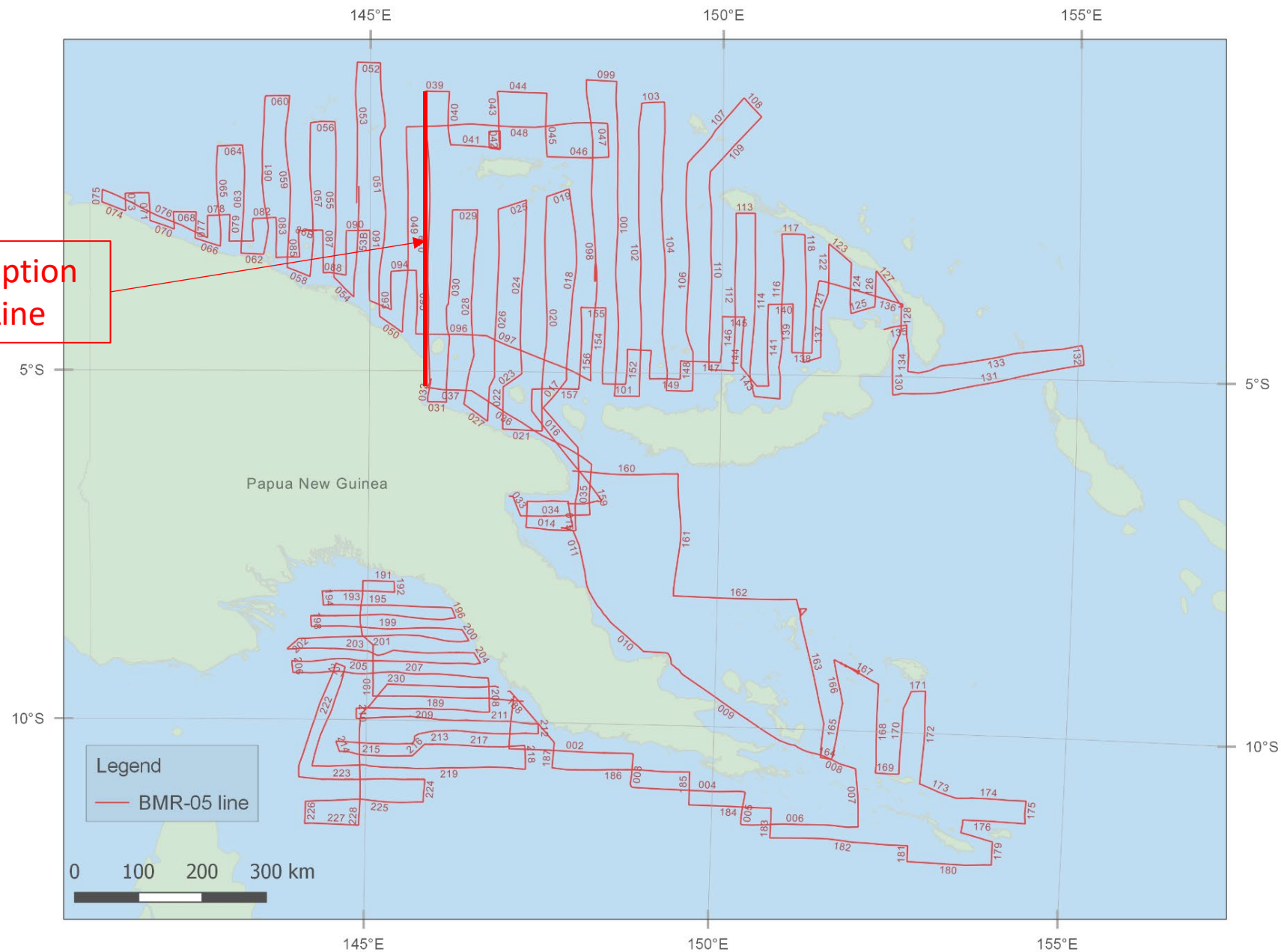
September 1970 to December 1970

# Regional Surveys recorded by BMR in AMPEX analogue format



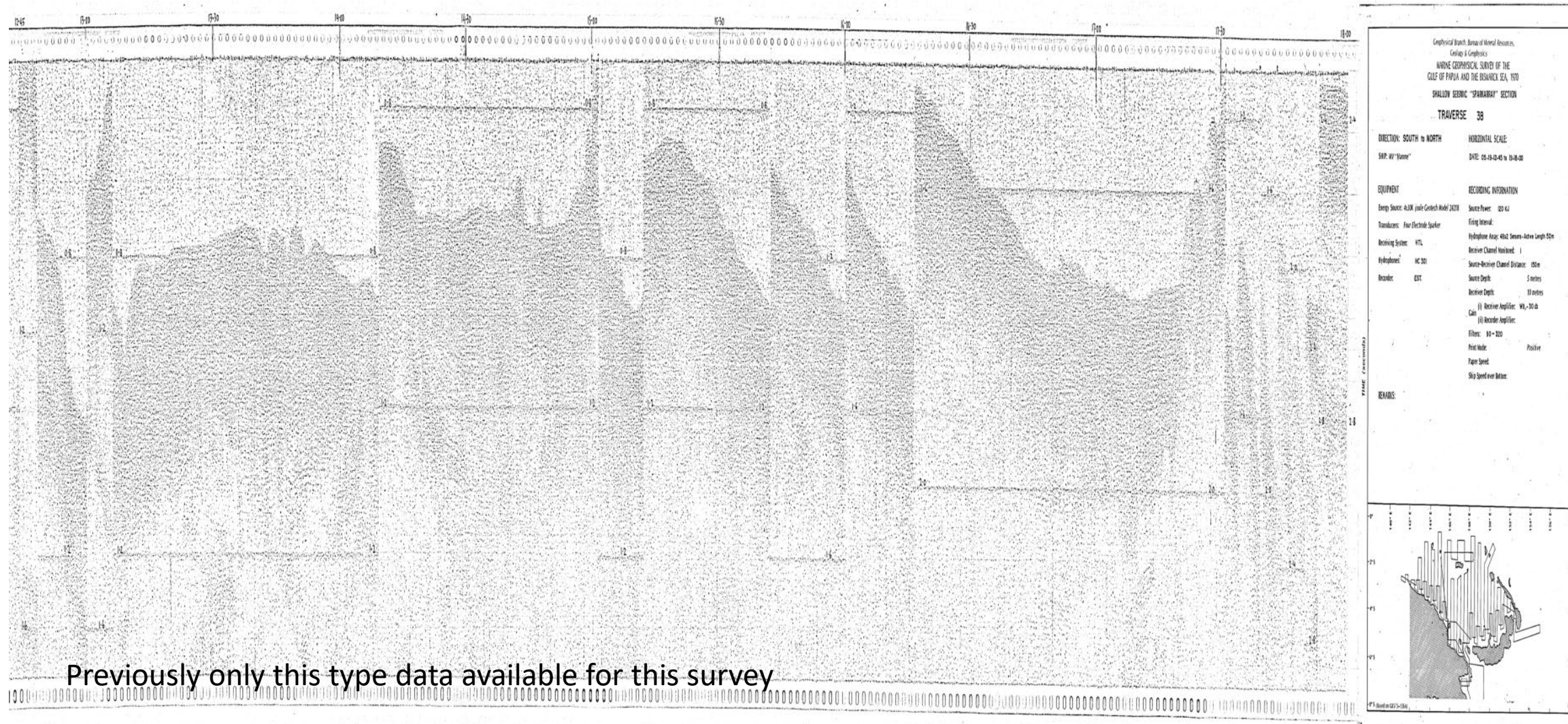
LOCALITY MAP  
TASMAN SEA AREA  
COMBINED MARINE GRAVITY, SPINNER SEISMIC  
AND MAGNETIC SURVEY 1967  
CGO 108-18

Transcription  
Test Line



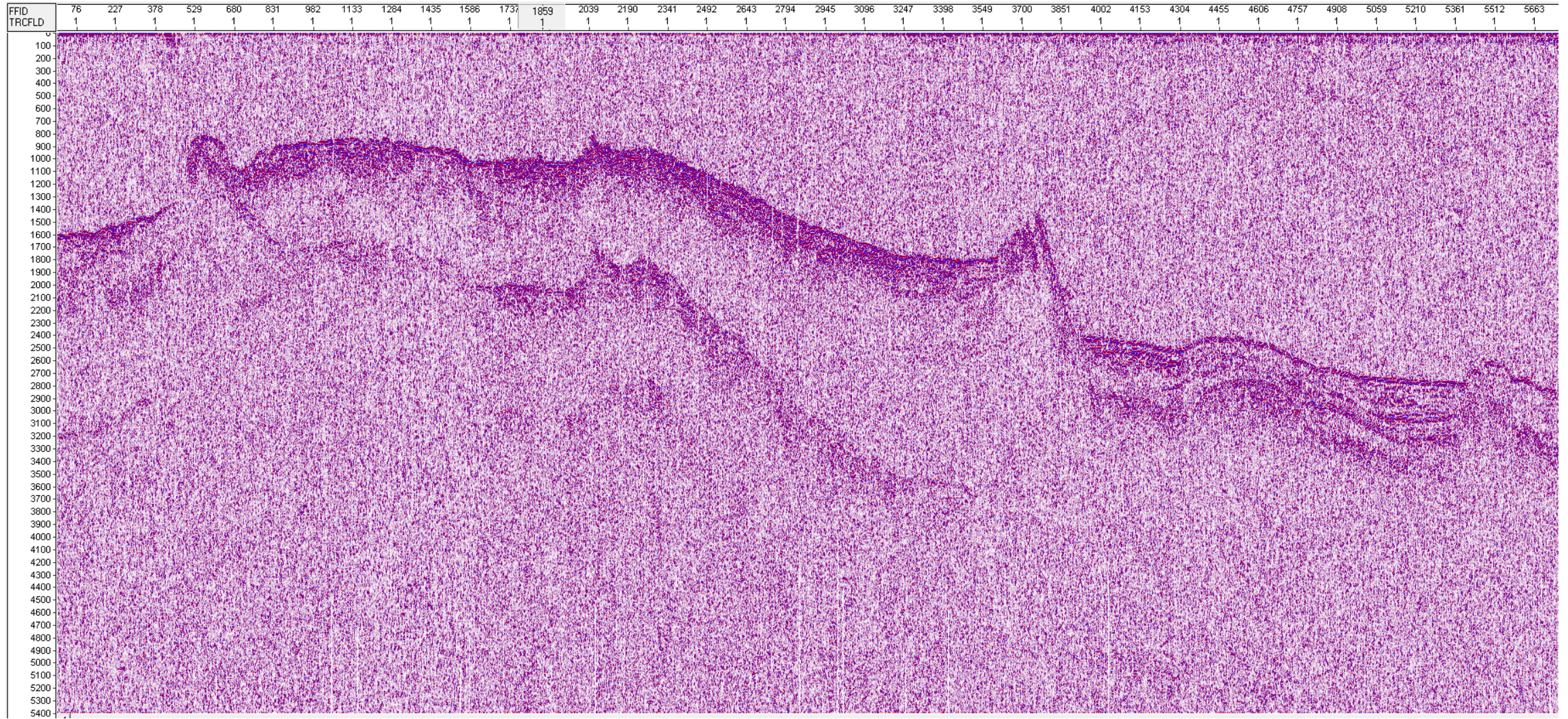


# Scanned boat Monitors



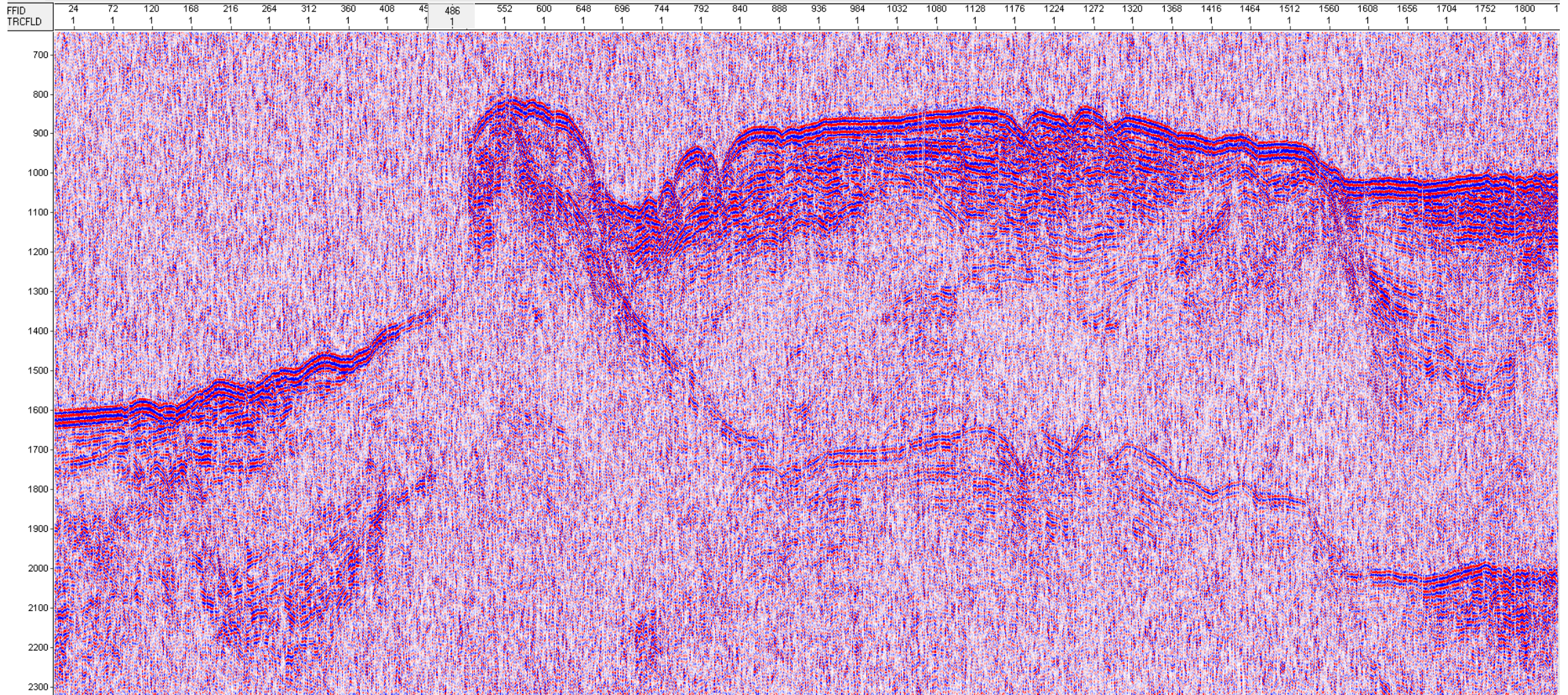


# Near Trace Gather



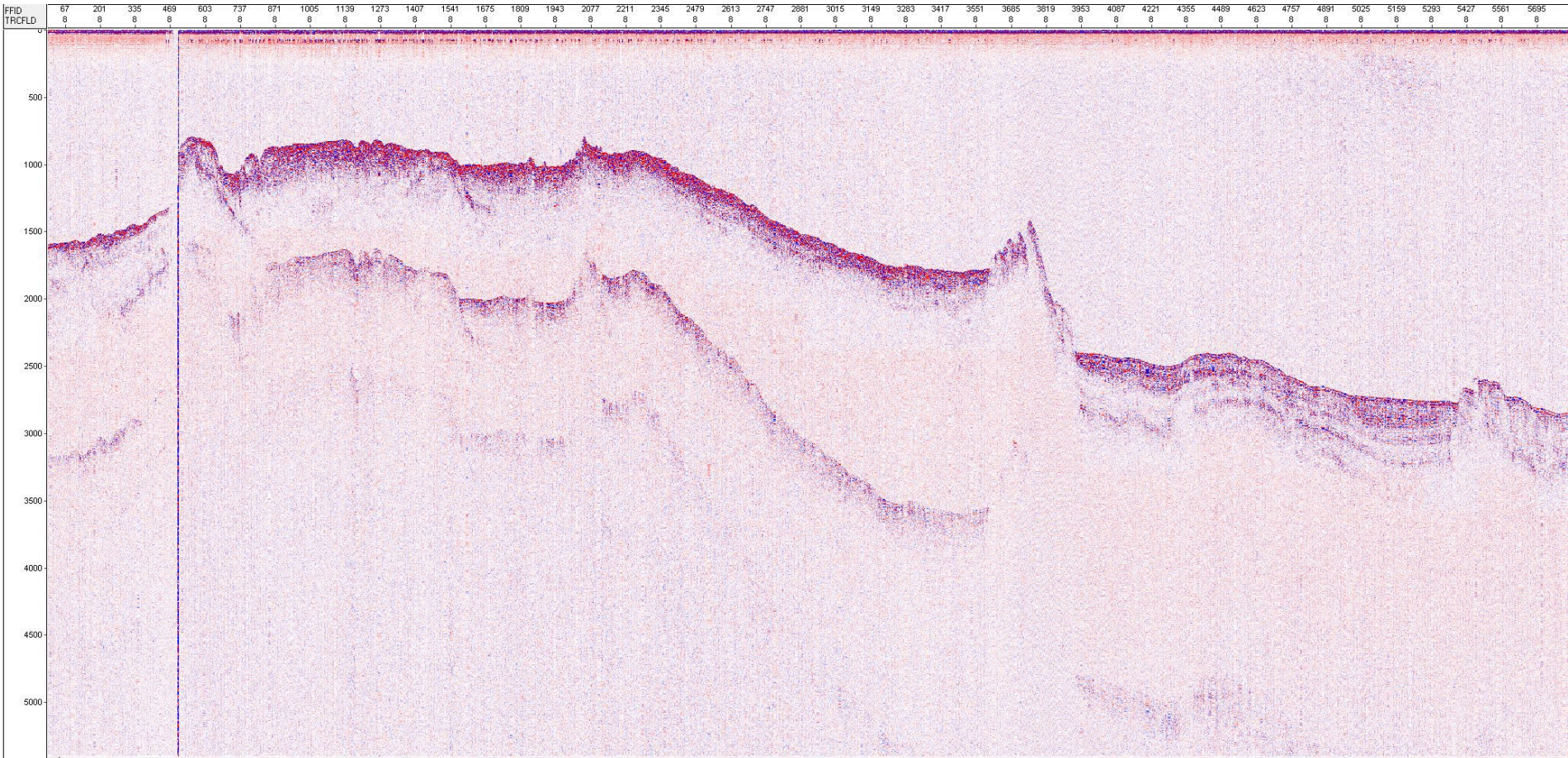


# Near Trace Gather - Zoomed



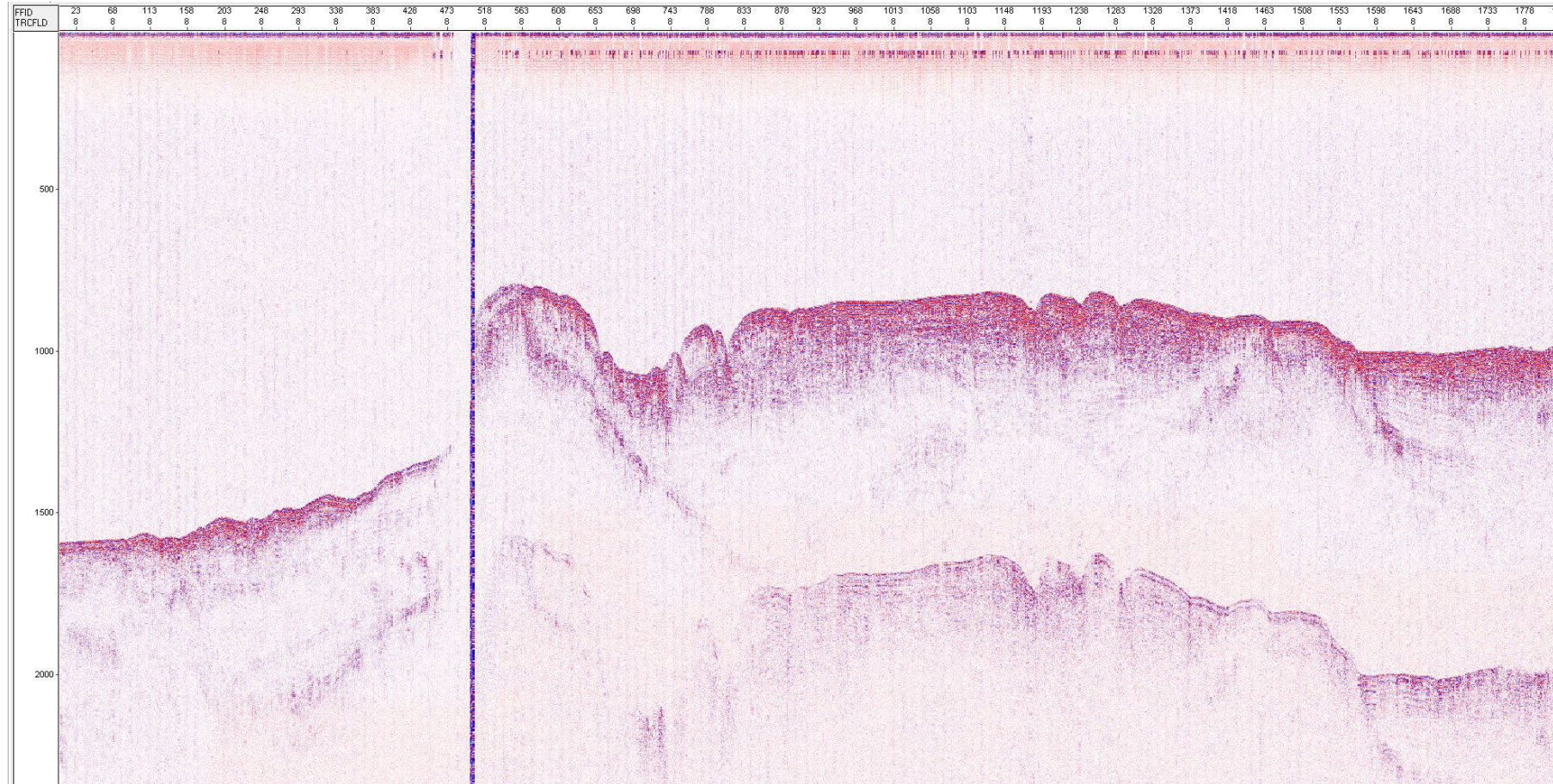


# Geotech Cable





# Geotech Cable Zoomed





# Background

- survey conducted between Sept 1970 and December 1970
- Total data acquired ~33,000 km
- 6 channel 1000m cable with 50m receiver group
- 4 Geotech 30,000 Joule Sparkers Source



# Recording Equipment

## Seismic Recording System

An AMPEX FR 1300 tape recorder was used for all of the surveys. It was capable of recording 14 channels of data to 1 inch magnetic tape with a tape speed of 15/16ths of an inch /second.

The channels recorded were

1	CGG channel 1
2	CGG channel 2
3	CGG channel 3
4	CGG channel 4
5	CGG channel 5
6	CGG channel 6
7	Stacked trace
8	Geotech shallow cable
9	Refraction
10	100Hz
11	Time Break
12	10 minute mark
13	Nil
14	Spit out (move out corrected)



## SPECIFICATIONS:

**Tape Speeds:** 1 $\frac{1}{8}$ , 3 $\frac{3}{4}$ , 7 $\frac{1}{2}$ , 15, 30, 60 ips standard.

**Tape Specifications:**  $\frac{1}{2}$  or 1-inch versions, 10 $\frac{1}{2}$ -inch reels.

**Heads:** 7 on  $\frac{1}{2}$  inch, 14 on 1 inch.

**Recording Modes:** Direct, FM, PDM (IRIG compatible).

**Frequency Response:** Direct: 300 cps to 300 KC  $\pm$  3 db.

FM: DC to 20 KC within 1.0 db. IRIG compatible PDM.

## FR-1300 INSTRUMENTATION RECORDER/REPRODUCER

... the smallest portable 14-track recorder, yet (24 x 18 x 12 $\frac{1}{2}$  inches), offering outstanding instrumentation performance with 300 KC on Direct, 20 KC on FM and IRIG compatible PDM.

## APPLICATIONS:

Full instrumentation capabilities including plug-in amplifiers and heads makes this an ideal recorder for field and laboratory use. Useful for telemetry, materials testing, process control and testing, and related applications in manufacturing, chemical, aircraft, petroleum, medical and aerospace installations.

## FEATURES:

New transport design based on refinements and improvements of time-proven Ampex systems. Unique capstan servo system insures speed accuracy under varying frequency and phase conditions. Electrical switching selects 6 speeds from a single, front panel control. Tape threading is simplified, straight-line path. Tape lifters reduce head wear in fast modes; can be defeated for high speed search. Controls are interlocked to positively prevent tape damage. Available in a rack-mounted version. Uses Ampex's solid-state ES-100 electronics.

AMPEX FR-1300 Instrumentation Recorder/Reproducer— $\frac{1}{2}$ -inch (1.27 cm), 7-Track, IRIG Heads,  
7 Direct Record Amps, 7 Direct Reproduce Amps, 7 Direct Reproduce Equalizers

**SELLING PRICE:**  
\$9,030.00

# Ampex Tapes





# Ampex Tape Drives



# Summary

- Data in an area where only old scanned boat monitors available previously
- Multi-fold data suitable for modern seismic data processing
- Data useful for exploration for hydrocarbons, minerals and research studies
- No charge for data, only charge for transcription
- Government approval for release of data