

# 40KM TRAIL MARATHON & Driver's Course

## Checkpoint / Aid Station Key

CHECKPOINT NAME	DISTANCE FROM START	DROP BAGS
<b>start</b> Walyunga Scenic Lookout	0.0 km	NO
<b>3</b> Nissen Hut	11.5km	YES
<b>4</b> Valley Campground	27.8km	YES
<b>finish</b> Cobbler Pool/ Finish Line Village	40.1km	YES

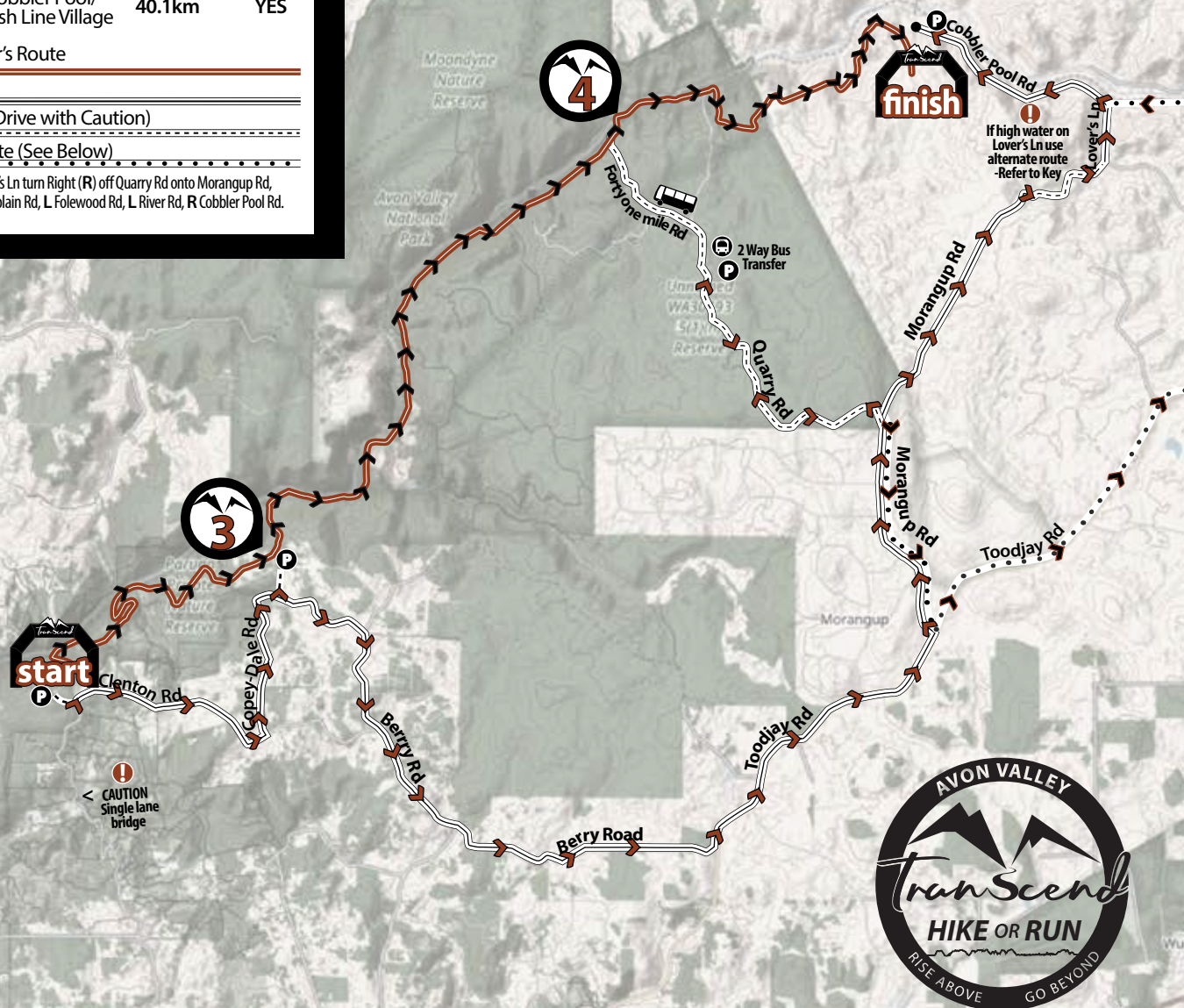
Hiker / Runner's Route

Driver's Route

Gravel Road (Drive with Caution)

Alternate Route (See Below)

If high water on Lover's Ln turn Right (R) off Quarry Rd onto Morangup Rd, L Toodjay Rd, L Sandplain Rd, L Folewood Rd, L River Rd, R Cobbler Pool Rd.



## Race Elevation

