

40km Hike or Run & Driver's Course

Checkpoint / Aid Station Key

CHECKPOINT NAME	DISTANCE FROM START	DROP BAGS
start Walyunga Scenic Lookout	0.0 km	NO
3 Nissen Hut	11.5km	YES
4 Valley Campground	27.9km	YES
finish Cobbler Pool/ Finish Line Village	40.2km	YES

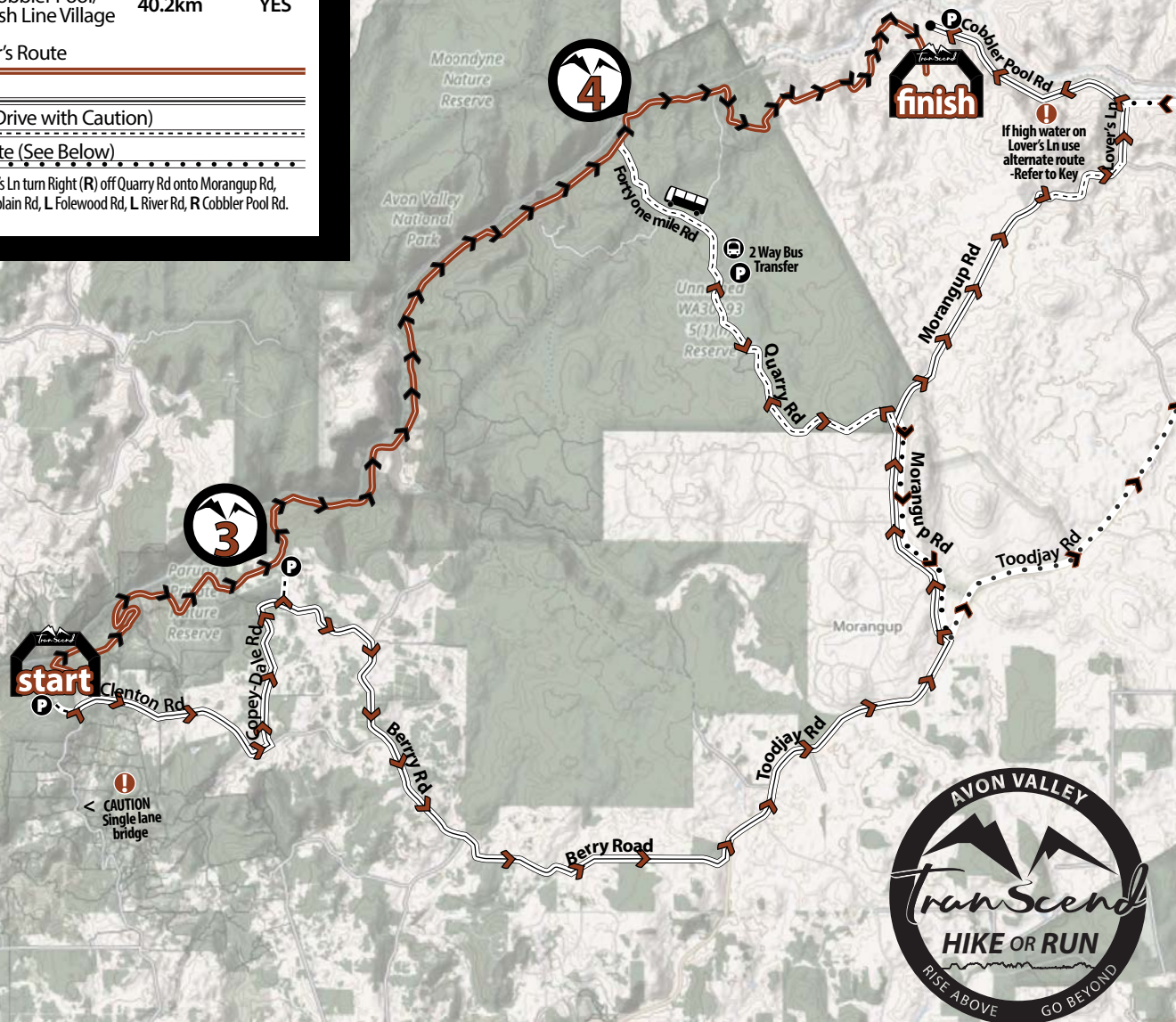
Hiker / Runner's Route

Driver's Route

Gravel Road (Drive with Caution)

Alternate Route (See Below)

If high water on Lover's Ln turn Right (R) off Quarry Rd onto Morangup Rd, L Toodjay Rd, L Sandplain Rd, L Folewood Rd, L River Rd, R Cobbler Pool Rd.



Race Elevation

