



MICHIGAN DEPARTMENT OF
ENVIRONMENT, GREAT LAKES, AND ENERGY

N34th Street Quarterly Update Meeting





Meeting Outline

- New updated maps
- Current Activities
- Upcoming Activities
- Website Update




SEMI-ANNUAL SAMPLING PFAS HEAT MAP AUGUST 2023

Legend

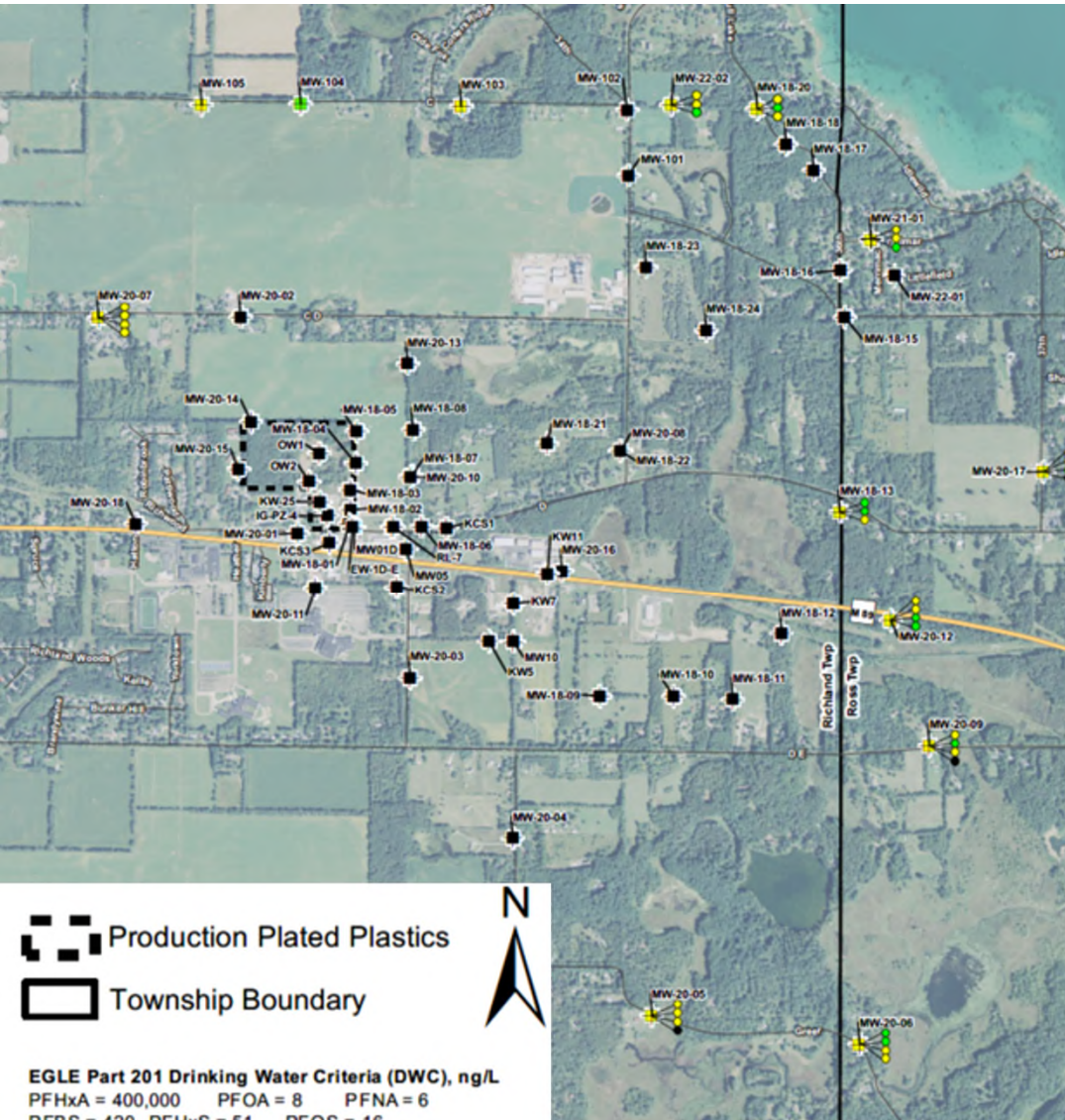
Monitoring Well

-  Non-Detect for Part 201 PFAS Compounds
-  Detection below Part 201 PFAS Criteria, but no Exceedance
-  One or more Part 201 PFAS Criteria Exceeded
-  Not Sampled

Results from nested monitoring wells:

-  Top = Shallow
-  Middle = Intermediate
-  Bottom = Deep

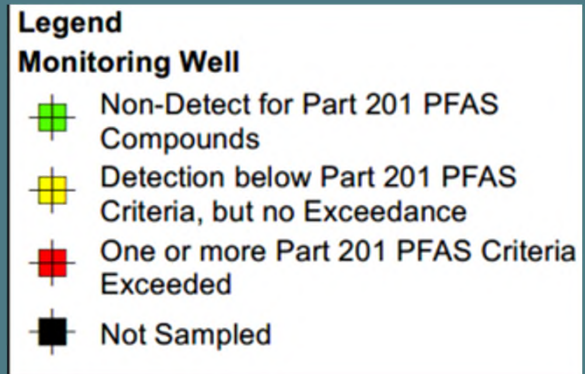
*Locations without depth indicators have only one monitoring well.



EGLE Part 201 Drinking Water Criteria (DWC), ng/L
 PFHxA = 400,000 PFOA = 8 PFNA = 6
 PFBS = 420 PFHxS = 51 PFOS = 16
 HFPO-DA = 370



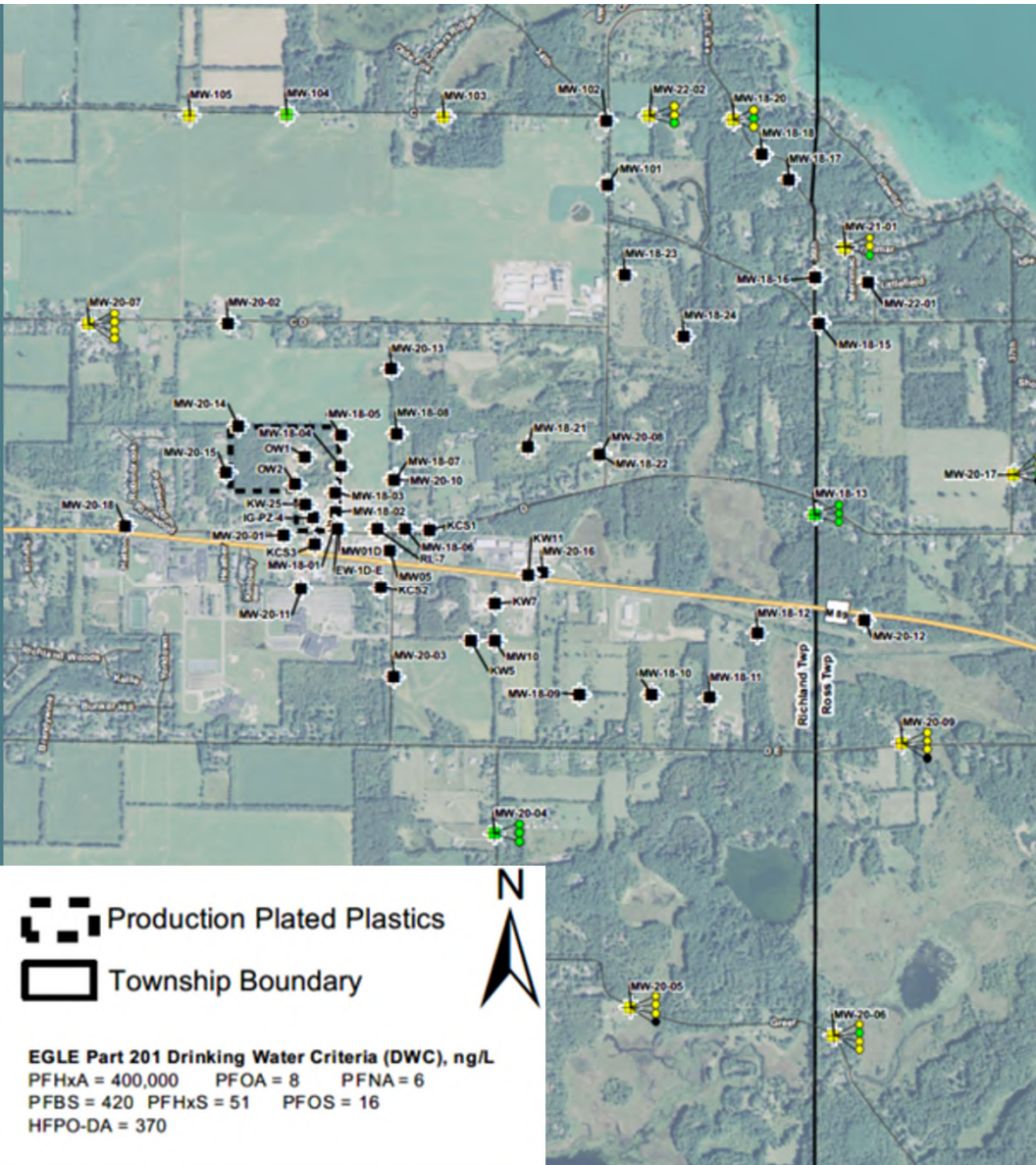
SEMI-ANNUAL SAMPLING PFAS HEAT MAP JUNE 2024



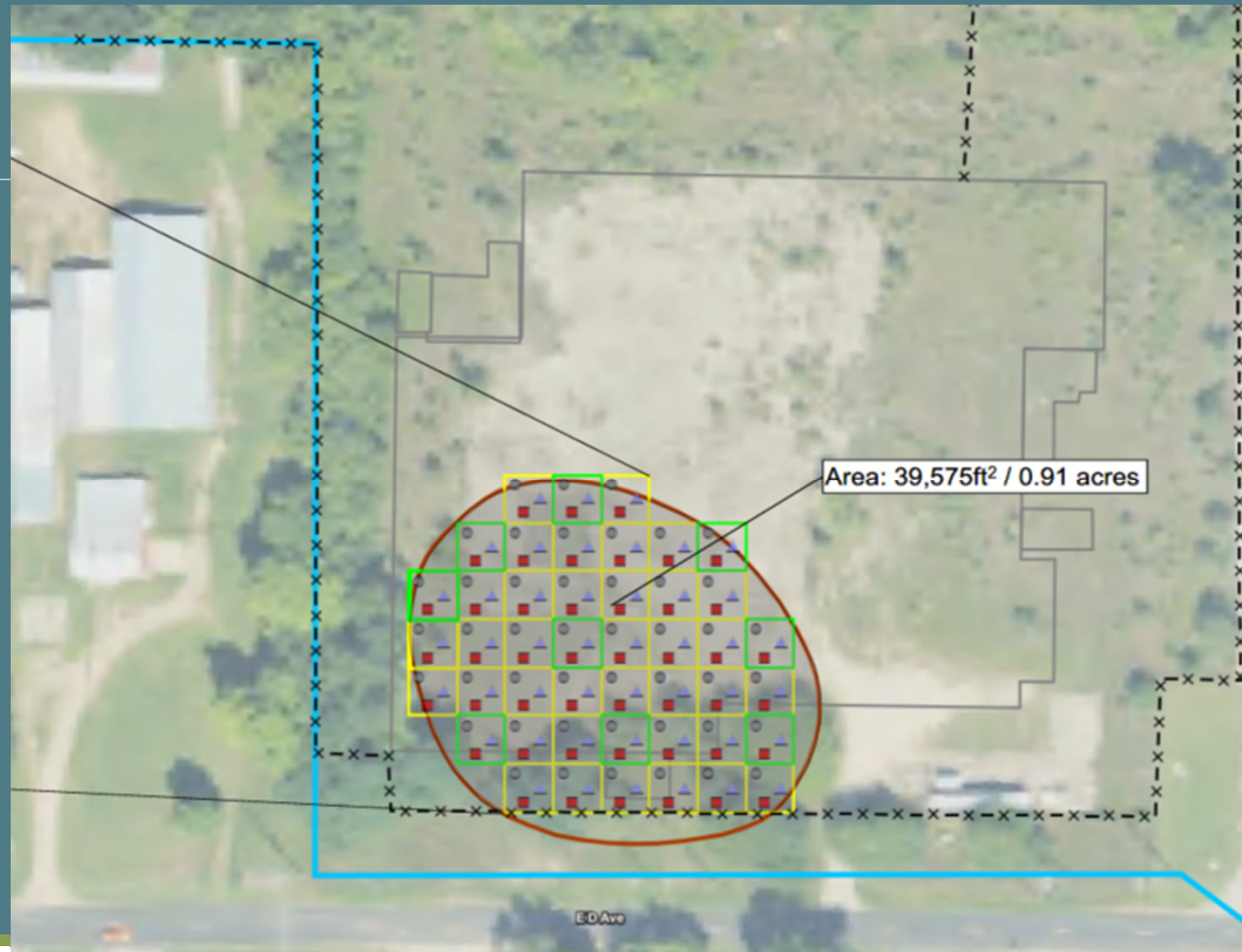
Results from nested monitoring wells:

- Top = Shallow
- Middle = Intermediate
- Bottom = Deep

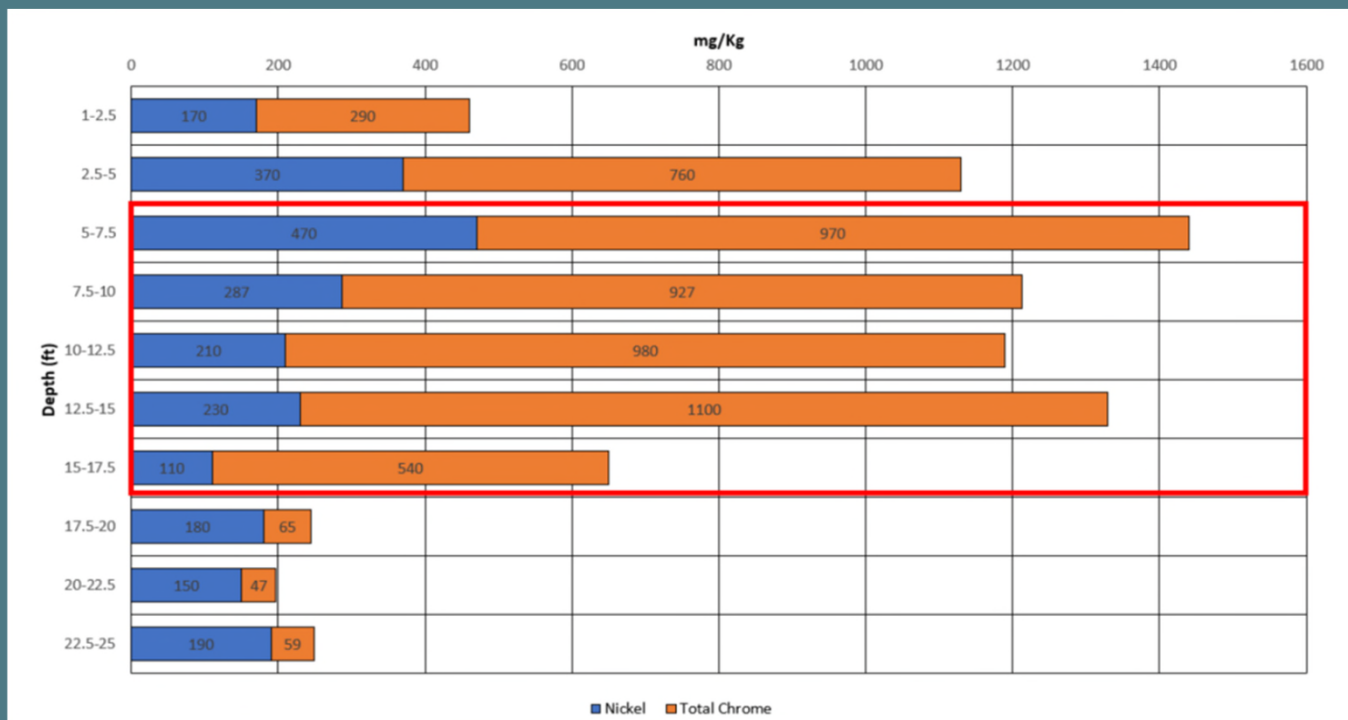
*Locations without depth indicators have only one monitoring well.



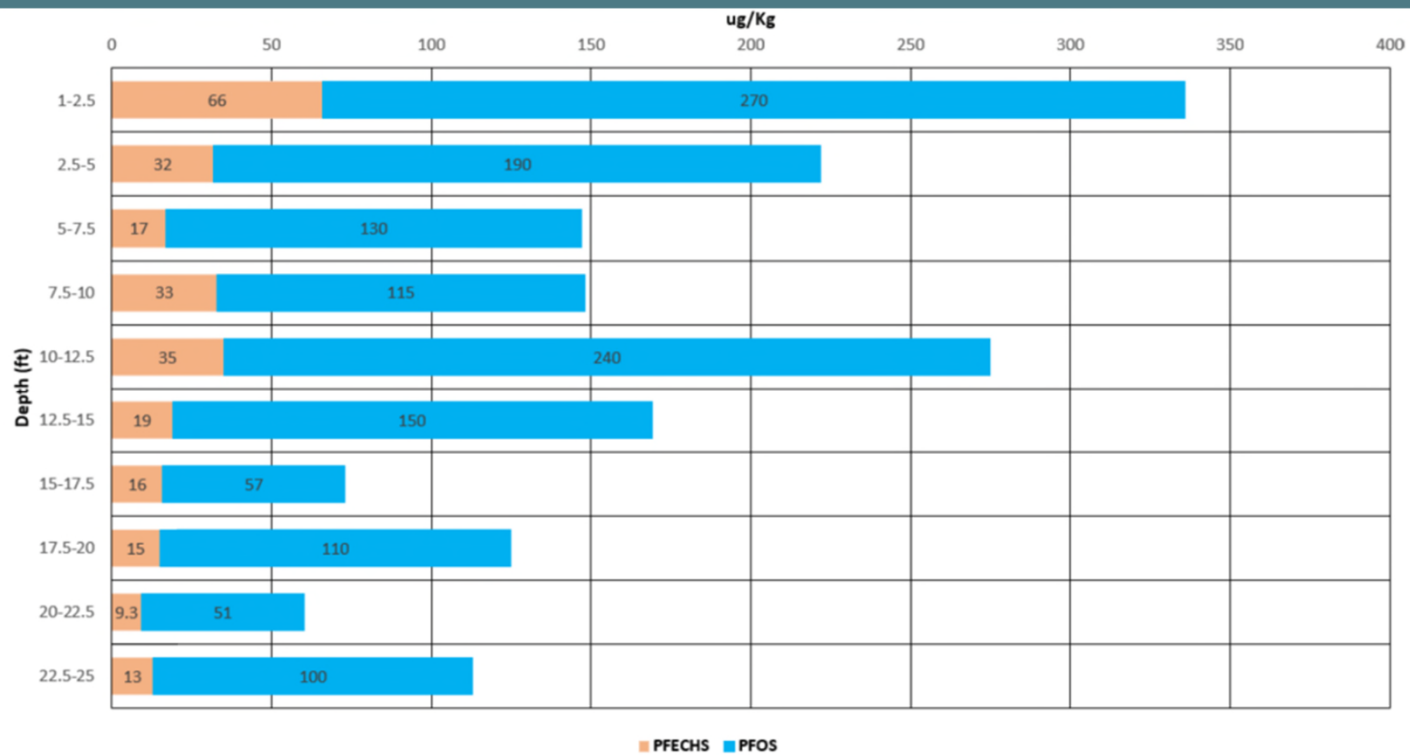
Soil Sampling



Soil Sampling

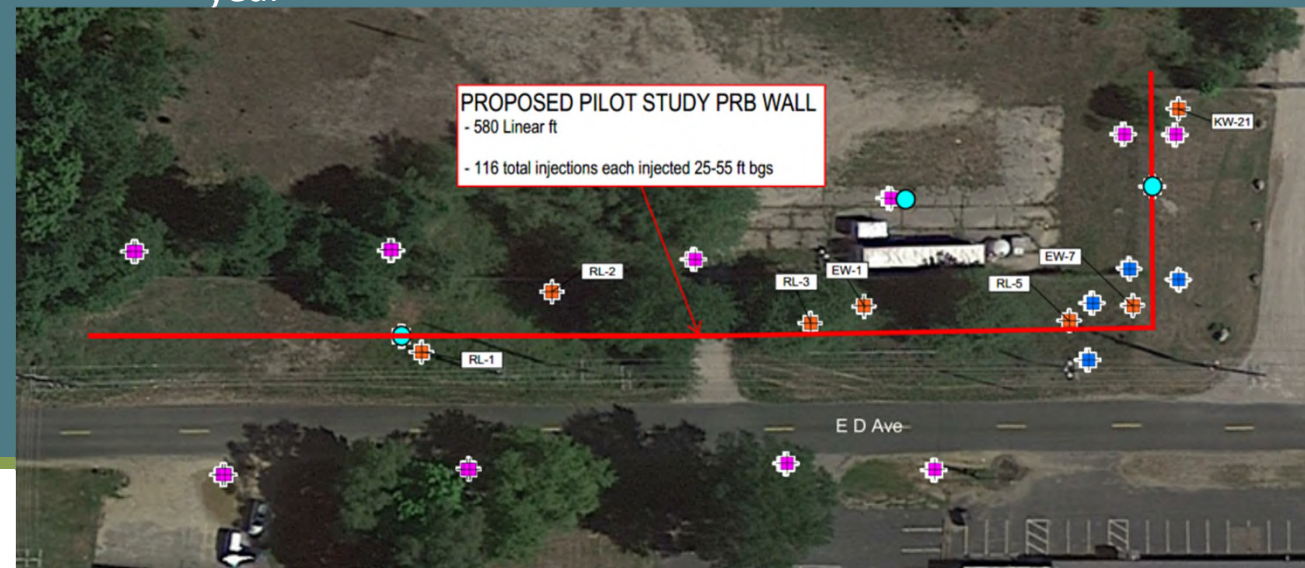


Soil Sampling



Permeable Reactive Barrier

- Mitigate groundwater contaminated with metals from leaving the site
- Complete early September
- Conducting performance monitoring sampling for the next year

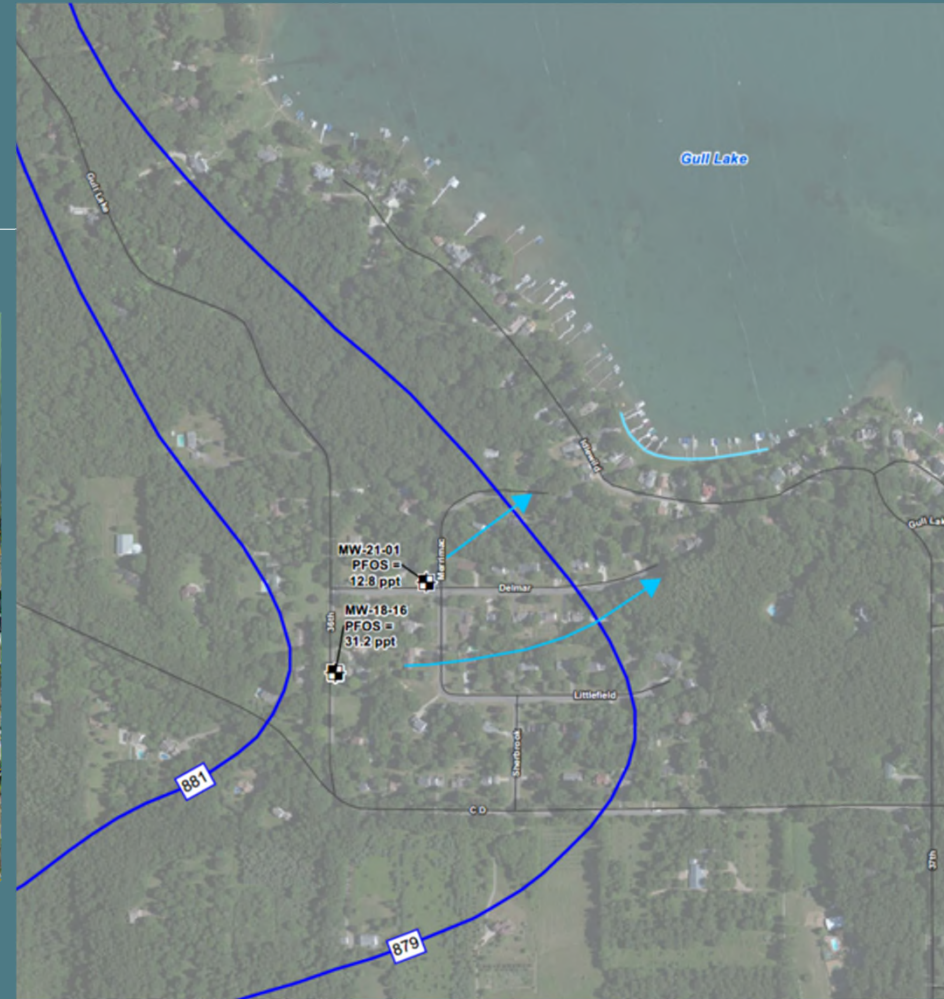




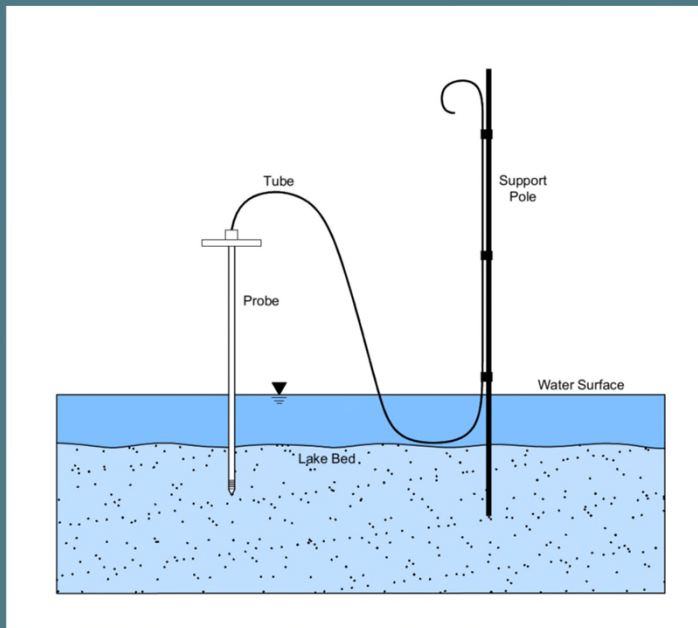
Groundwater Sampling

- Semi annual groundwater sampling for perimeter wells only
- Passive sampler study
 - Second event being conducted early December

Porewater Sampling



Porewater Samplers



Upcoming Activities

- Continued Semi annual groundwater sampling (summer & winter)
- Reports!
- Fish sampling (WRD)
- Requested Funding to evaluate remediation technologies

Webpage

<https://www.michigan.gov/pfasresponse/investigations/sites-aoi/kalamazoo-county/north-34th-street>

Questions
