

# Gull Lake Sewer + Water Authority Workshop

Municipality Presentation

Goals + Objectives Discussion  
2012 + 2013 Budget + Rates Review  
Level of Service Discussion

-----  
Spring - Summer 2012



# Goals + Objectives:

- Narrative:
- This year, unlike the last 4-5 years, finds us with diminishing revenues, increasing costs, Public Act 152 (Senate Bill 7), and the need for our third ever rate increase to match revenues with proposed expenses.
- This does not appear to be a single, one-time, ‘good-for-five’ year rate increase, so this workshop is intended to provide background into our operations – in order to propose a budget and implement rate increases to continue to provide the levels of service we have always provided.
- The necessity of rate increases always causes a ‘reality check’ on our performance.
- Overall goal: Our overall goal for this workshop is to review the proposed rate increases and adopt the resolution regarding rates for an October 1<sup>st</sup> effective date; plus familiarize ourselves with the ordinance changes, and schedule the ordinance adoption for October-November for a December 1<sup>st</sup> effective date.



# Goals + Objectives summary

- Rates:
  - Review proposed rate increases
  - Approve rate increase resolution for 10/1 effective date
- Ordinance
  - Review proposed ordinance changes
  - Schedule approval for 12/1 effective date
  - To be published by the Authority

# Authority Overview

## Questions

- Who are we?
- Why are we?
- What are our top 5 objectives?

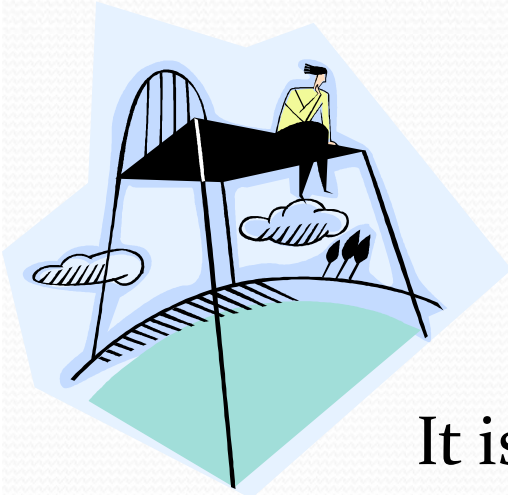
## Answers



# Mission Statement

Existing Mission Statement  
(from web site)

---



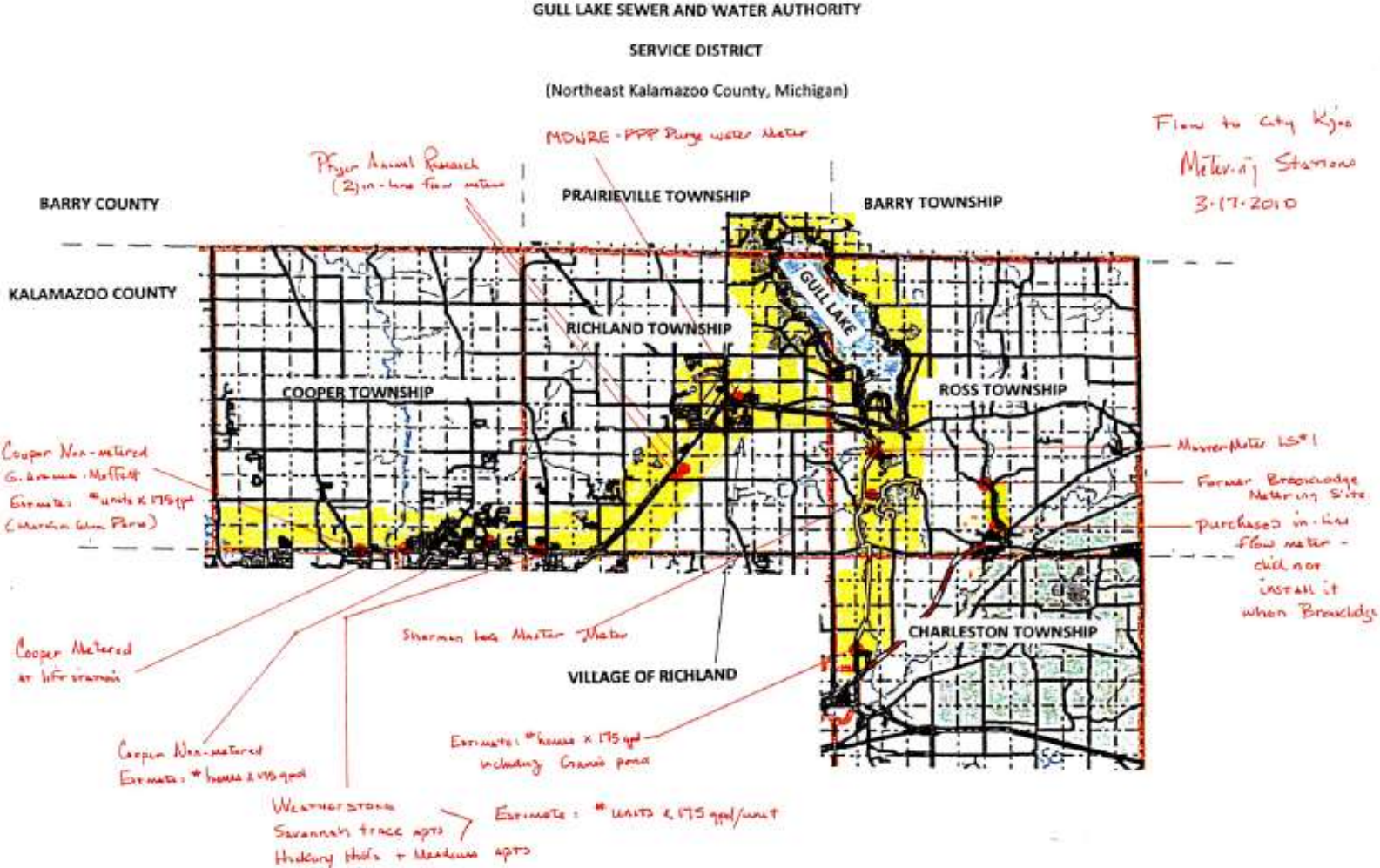
It is the mission of the Authority to surpass the expectations of our customers -- to effectively, efficiently and in observance of all safety and sanitary practices, collect and transport wastewater from our customers to the City of Kalamazoo for treatment and disposal.

## Authority purpose : (from web site)



- Created in 1980 by the Townships of Ross, Richland, Barry and Prairieville, the Authority collects wastewater from over 2000 customers in northeastern Kalamazoo County, Michigan, using a network of over 50 miles of collector sewers, 35 pumping stations and associated trunk sewers. Wastewater is pumped to the City of Kalamazoo for treatment and final disposal. The Authority provides complete system management, maintenance, repair and upgrades.
- The current service district consists of the Townships of Ross, Richland, Cooper, Village of Richland, and a portion of Charleston Township, plus the southerly portion of Barry and Prairieville Townships in Barry County.

# Current Service District + Metering Locations



# Commitment to Excellence

## Gull Lake Sewer and Water Authority Commitment to Excellence

•  
We are in business for our customers' convenience and security, not our own.

•  
We strive to tailor our services to our customers' needs and continuously improve what we do.

•  
We follow the golden rule and treat our customers as we would like to be treated.

•  
We aim for 100% satisfaction. If there is anything you're not satisfied with, we will do everything in our power to make it right.







# Authority top 5 (+1) objectives

- Top five objectives: (plus one)

1. **Utility (Sewer) System Preservation:** Preserve the value of all assets (\$10 million - 1980 original cost - Gull Lake initial system ) - extend system life of all Systems as long as reasonably possible by performing thorough and timely inspection, maintenance and replacement on all equipment + pipe using the latest available technology, recognizing increased costs 'ramping' up with age.
2. **Sewer Transportation:** Transport wastewater safely, effectively and efficiently at the lowest possible cost to maintain expected and necessary service levels. Have zero ("O") back-ups or "incidents" caused by or with the public system.
3. **Sewer Availability:** Protect and preserve our rights to flow to the Kalamazoo Wastewater Plant - to avoid having to construct or pay unnecessary 'premiums' for the right to continue discharging to Kalamazoo (capacity rights).
4. **Sewer Customers:** Achieve and maintain service levels that surpass the expectations of our customers, including in this definition of customers, townships + villages that we service.
5. **Sewer Employees:** Maintain staffing levels with commensurate levels of pay and benefits to remain competitive in both the public and private marketplace, with employees who 'buy into' our Mission and Commitment to Excellence as we provide the levels of service that the Authority has become known for.
6. **Future Service:** Provide quality public utility service = Water + Sewer to all Service Districts - All Customers, including future neighboring jurisdictions as may occur.



# Goals + Objectives : Page 7

## Questions

- Who are we?
- Why are we?
- What are our objectives?

## Answers

- Gull Lake Sewer + Water Authority
- To serve our utility customers
- As noted above

# Gull Lake Sewer + Water Authority Workshop

Budget Workshop

# What's different for FYE 2013 + ?

## Capital re-investment – Replacement portion

- Our systems are aging: 5-30 years old
- Operations and Maintenance fees = \$21.67 per month
- O + M + R – the “R” (replacement) - has almost always been omitted from our quarterly User Rate
- R – has, for the most part, come from new connections – growth
- New connections have decreased from 100 to 20 annually
- \$10 M in asset original cost - 1982
- \$13 M in asset additions – 25 yrs
- Additional asset obligation with contract customers
- Reasonable O + M fees
- In 2010 we inspected 10% of our system manholes + pipe
- We inspected 100% of Charleston + Cooper Township manholes
- Found replacement + upkeep items = \$60,000 - \$80,000 total
- Need to fund and schedule replacement + upkeep of \$40,000 - 60,000 annually more than before
- Need to purchase additional equipment + add staffing to make repairs in-house (more cost-effective)

# What's different for FYE 2013 + ?

Capital re-investment - Replacement portion

- Summarizing what's different:
  - The old adage 'if it ain't broke, don't fix it' is no longer viable nor appropriate
  - Assets are wearing out their useful life daily, and the decline is now measurable
  - The life of assets may be extended by identification of proper maintenance + upkeep
  - We can identify when the asset should be scheduled for replacement

# What's different for FYE 2013 ?

## Expenses + Levels of Service

- New work order system
- Identify rain impact on specific portions of system
- Begin repairing the items found in 2010 (in 2012-2013)
- Manhole inspection + upgrades- begin fye 2014
- New document scanning system
- GIS – Drawing + updating + Web mgmt
- Ensure staff efficiencies
- We had hoped to add a 4-day per week field person – but have postponed this request
- We had hoped to purchase jetter + tractor camera
- We will need a new pole barn to house new equip
- But...for 2012-2013 - 1 new p. time field person 2 day per week – starting in October



# Authority Board

Budget Workshop – 3/22/12 – 10 am

- Revenue + Expense comparative by categories
- Review of 2009 - 2011 expense + revenue
- Extended (pro-forma) 2009 – 2011 budget
- Comparative overview of FYE 2012 budget + revenue
- Comparative overview of 2013 expense + revenue
- Review revenue history 2009-2013
- Review top 40 rate payers – industrial – commercial
- Review budget ‘drivers’ – top expense categories
- Review Senate Bill 7 impacts to employees
- Discuss issues relative to Health Care

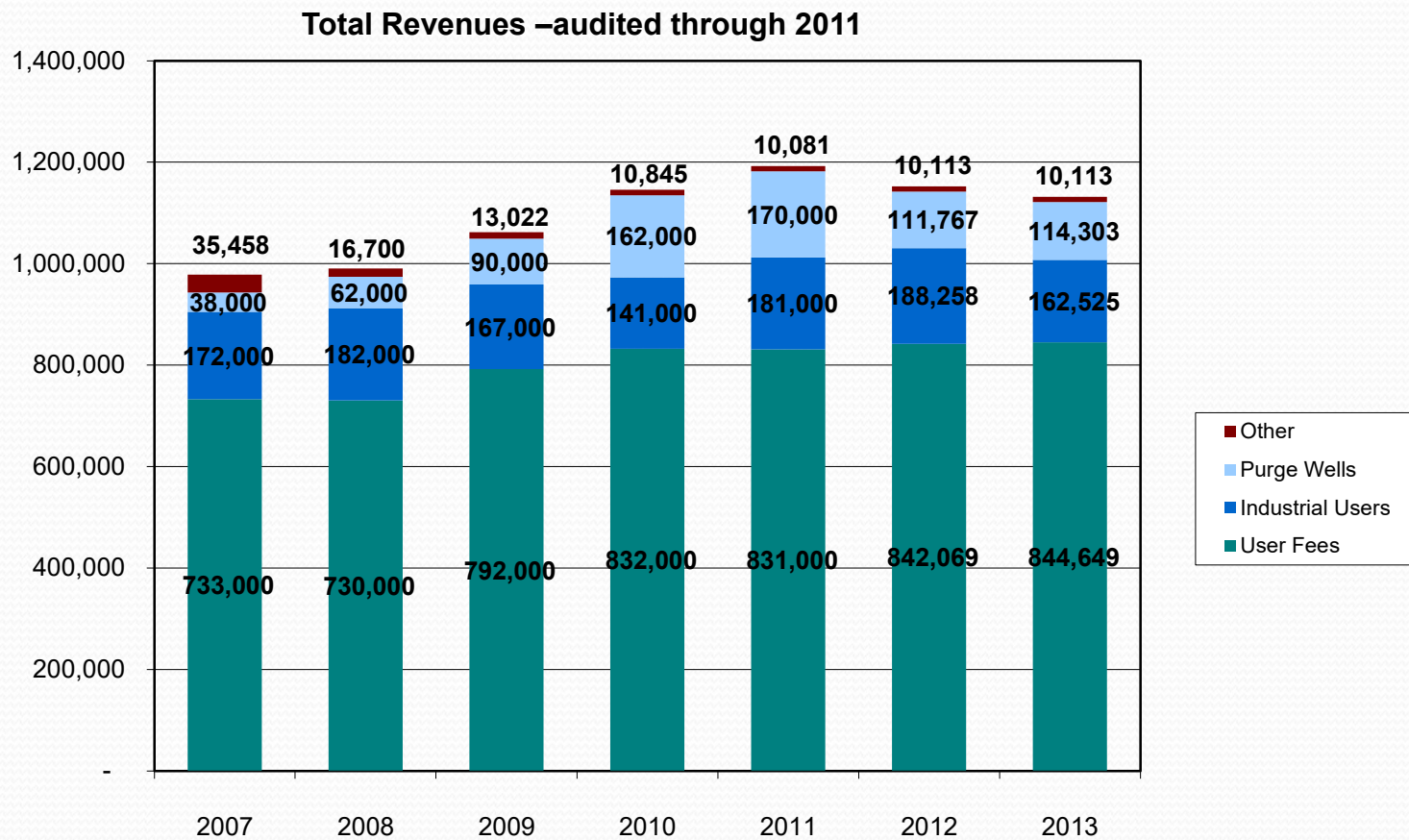


# Revenue Sources : (a) User Fees + (b) Connection Fees

- The Authority has two primary sources of Revenue:
  - USER REVENUES (Quarterly charges) :
    - -- historically paid for O + M expenses
    - -- historically has not contained an “Replacement” component
  - CAPITAL REVENUE (Connection Fees) :
    - -- historically paid for capital improvements / replacement



# User Revenues - total by type / class



# Revenue – top customers: #1-20

	2012 FYE Revenue - Top 40		ANNUAL User Rev
1	Pfizer Animal Farms (Pharmacia-Upjohn)	Richland Township	\$ 188,258
2	MDEQ – State of Michigan (formerly Pr.PI.Plastics)	Richland Township	\$ 111,644
3	Coopers Landing	Cooper Township	\$ 91,742
4	The Meadows	Richland Township	\$ 27,720
5	Savannah Trace	Richland Township	\$ 17,316
6	Gull Lake Ministries (includes 45 residential properties)	Ross Township	\$ 16,518
7	Gull Lake Schools	Richland	\$ 12,219
8	Kellog Bio Station	Ross Township	\$ 11,622
9	Arbor Terrace	Richland Township	\$ 9,986
10	Richland Mobile Home Park	Richland Township	\$ 9,101
11	Ogonowski	Richland Township	\$ 8,528
12	Gull Lake View Golf Club	Ross Township	\$ 8,320
13	Country Management	Richland Township	\$ 7,592
14	Rolling Pines	Richland Township	\$ 7,488
15	Gull Lake Country Club	Richland Township	\$ 6,500
16	Sherman Lake YMCA	Ross Township	\$ 5,369
17	Parker Hannifin Corp	Richland Township	\$ 4,187
18	Spruce Lane Apartments	Richland Village	\$ 4,181
19	Splash N Dash McBain, Wayne	Richland Township	\$ 4,057
20	Hickory Hills Apartment	Richland Township	\$ 4,005

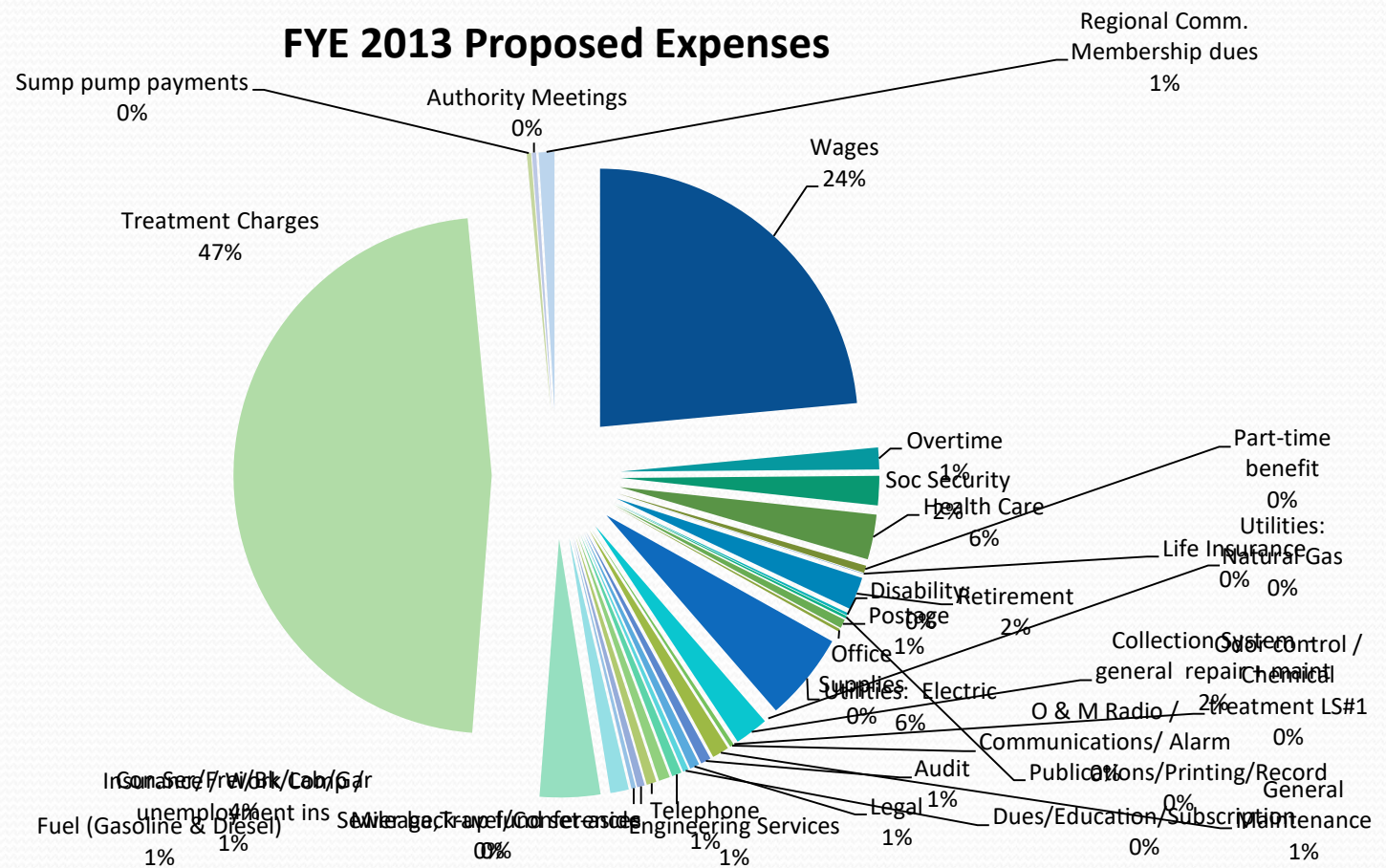
# Revenue – top customers: #21-40

20	Hickory Hills Apartment		\$ 4,005
21	Mission Pointe of Richland	Richland Township	\$ 3,178
22	Galesburg-Augusta High School	Charleston Township	\$ 2,600
23	Wells Aluminum Corporation	Cooper Township	\$ 2,600
24	The Black Hawk Bar and Grill	Richland Township	\$ 2,236
25	Markin Glen Park	Cooper Township	\$ 2,080
26	Americar Inc.	Richland Village	\$ 2,052
27	Parkview Café Liz Enterprices	Richland Village	\$ 1,810
28	McDonalds Store #6023	Richland Village	\$ 1,448
29	Richland Bible Church	Richland Village	\$ 1,326
30	Jack Houtkooper (Sajo's)	Richland Township	\$ 1,248
31	Home Again Child Care Center (PSB)	Richland Village	\$ 1,170
32	Borgess Health Alliance	Richland Village	\$ 1,170
33	Mac's Station	Richland Village	\$ 1,053
34	Richard Griffith - The Commons	Richland Village	\$ 1,040
35	Richland Pub PAKK Pubs. Inc.	Richland Village	\$ 1,040
36	Gull Lake Inn	Ross Township	\$ 1,040
37	Parchment School 5535 Keyers	Cooper Township	\$ 1,040
38	Nash, Inc.	Cooper	\$ 1,040
39	Hardings Market	Richland Village	\$ 1,006
40	Richland Lanes	Richland Township	\$ 1,001
	Total non-residential revenue		\$ 587,533

# Revenue – source summary

	<b>Total non-residential revenue</b>	<b>\$ 587,533</b>	
	<b>Total System Revenue - FYE 2012</b>	<b>\$ 1,142,000</b>	
	<u>Breakdown by customer type</u>		
	Total Non-Residential as a group		54.14%
	Top 40 (above) Non-Residential		
	Industrial		16.48%
	Apartments		16.43%
	Purge Water		9.78%
	Remaining Commercial - Gull Lake Ministries, Schools, etc.		8.75%
	Residential - non apartment, non commercial		45.86%

# Treatment charge - Kalamazoo



# Clean Water Elimination 2014 + (what do we know- where are we?)

- We initially believed:

- There are 100-200 + sump pumps in our system
- That our own system has infiltration, not all from homeowners
- That observation with a \$13,000 pole camera could find sump pumps
- That perhaps as much as \$50,000 savings per year could be realized with a more rigorous inspection, identification, monitoring + enforcement

- We now believe:

- There are 100-200 + sump pumps in our system
- That our own system has infiltration
- That once identified, more expensive camera equip is needed
- That once discovered, 2 of 10 are difficult to enforce
- That inspection of every home is not viable
- That additional measuring science needs to be applied at large
- That there remains significant long-term annual savings of \$50,000 + , requiring long term investment as well as long-term diligence

# Gull Lake Sewer + Water Authority Workshop

2012-2016 :  
Rate Increase Proposal



# Historical perspective

- Rate increases:
  - From 1985-2005 (20 yr period): our sewer use rate = \$18.33 per month per home (unit) (\$55 per qtr).
  - From 2005-2008: our sewer use rate = \$20 per month per home (unit) (\$60 per qtr) (9% increase).
  - From 2008- 2012: our sewer use rate = \$21.67 per month per home (unit) (\$65 per qtr) (8.3% increase).





## Authority Board Recommendation

- Per the Resolution prepared for each municipality:
  - No increase in Connection Fees charged to new construction / connections
  - Growth must pay for Growth (when development occurs)
  - Implement a series of rate increases to catch up the current year and place us ahead of 3% inflation
  - Acknowledge our challenge is to limit budget creep to 3% per year.
  - No debt service on customers except for Little Long Lake and Gull Island
  - Continue with the collection of \$8 per month per home for grinder pump customers (amortized 12 year pump replacement) (no change)
  - No additional charges above Cost of Service – maintaining existing reserve levels

# Proposed Rate Increase

- Rate Resolution: Requesting approval of:
  - Effective Oct 1<sup>st</sup>, 2012: Increase \$5 per quarter  
(\$1.67/mo)
  - Effective Oct 1<sup>st</sup>, 2013: Increase \$4 per quarter  
(\$1.33/mo)
  - Effective Oct 1<sup>st</sup>, 2014: Increase \$4 per quarter  
(\$1.33/mo)

# Proposed Rate Increase

## Letter to customers – mailed early August

### Gull Lake Sewer & Water Authority

7722 N. 37<sup>th</sup> Street  
Richland, Michigan 49083  
Phone: (269) 731-4595  
Fax: (269) 731-2596  
www.glswa.org

August 8, 2012

Attn: Gull Lake Sewer Authority Customers

Re: Update – October 1<sup>st</sup> Rate Increase - \$5 per quarter (\$1.67 per month)

Dear Authority Customer;

Due to increasing costs and lack of new construction/connections, we are writing to announce a \$5 per quarter rate increase to be effective October 1<sup>st</sup> of 2012. We anticipate each municipality adopting the rate increase resolution in August or September; including provisions for subsequent rate increases as detailed below. Should budget projections improve between 2013 + 2014, the rate increases could be modified or not placed into effect.

Additional information is presented below and on page 2, including an attached flyer on clean water -- groundwater discharging to the public sewer (not permitted).

We thank you for your continued support as we celebrate our 29<sup>th</sup> consecutive year of wastewater collection and treatment services.

Respectfully;



Rich Pierson, Director  
Gull Lake Sewer + Water Authority

**Sewer Rate increase:** Current rate = \$21.67 per month per home (per unit): Billed quarterly at \$65/ qtr.

**Phase 1:** Effective October 1, 2012: from \$21.67 per month to \$23.33 per month per home (unit) = \$70 per qtr

**Phase 2:** Effective October 1, 2013: from \$23.33 per month to \$24.67 per month per home (unit) = \$74 per qtr

**Phase 3:** Effective October 1, 2014: from \$24.67 per month to \$26.00 per month per home (unit) = \$78 per qtr

October 1<sup>st</sup>, 2012: Due to (i) increasing treatment costs of the City of Kalamazoo, (ii) lack of new connections (economy), (iii) loss of customers from foreclosures, (iv) increasing repair, utilities/fuel and other costs, and (v) the increasing costs of repairing and replacing our infrastructure, we find it necessary to increase our rates -- based on current economic projections. Dependent upon a number of factors, rates may level off or continue to climb after the next three years.

#### History of rate increases - background:

- From 1985-2005 (20 yrs): our sewer use rate = \$18.33 per month per home (unit) (\$55 per qtr).
- From 2005-2008 (3 yrs): our sewer use rate = \$20.00 per month per home (unit) (\$60 per qtr).
- From 2008- 2012 (4 yrs): our sewer use rate = \$21.67 per month per home (unit) (\$65 per qtr).

# Rate Comparisons - at 6000 gal/month

## Community Water and Sewer Rate Comparisons - December 2011

Community	Contact Email	Date of Last Adj.	Contact #	Pop.	Monthly Water R.T.S. Rate	Water O & M /100glns	Water Other	Monthly Total @ 6,000 glns	Monthly Sewer R.T.S. Rate	Sewer O & M /100glns	Sewer Other	SEWER ONLY		Monthly Total Water & Sewer
												Monthly Total @ 6,000 glns	Quarterly Total @ 6,000 glns	
# Ferrysburg	<a href="mailto:dwierenga@ferrysburg.org">dwierenga@ferrysburg.org</a>	7/1/2008	616-842-5803	3,040	\$8.96	\$2.88	\$0.00	\$26.24	\$4.47	\$2.42	\$0.00	\$18.99	\$56.97	\$45.23
# Paw Paw	<a href="mailto:c.lapper@pawpaw.net">c.lapper@pawpaw.net</a>	7/1/2005	269-657-3148	3,363	\$13.65	\$1.49	\$0.00	\$22.59	\$9.20	\$2.07	\$0.00	\$21.62	\$64.86	\$44.21
	GLSWA	7/26/2012										\$21.67	\$65.00	
# North Muskegon	<a href="mailto:kmattson@cityofnorthmuskegon.com">kmattson@cityofnorthmuskegon.com</a>	4/1/2011	231-744-1621	3,786	\$8.33	\$4.14	\$0.00	\$33.17	\$5.42	\$2.74	\$0.00	\$21.86	\$65.58	\$55.05
# Gun Lake	<a href="mailto:qlasa@fnwusers.com">qlasa@fnwusers.com</a>	1/1/2005	269-672-5588	2,200	\$22.00	\$2.00	\$0.00	\$34.00	\$22.00	\$0.00	\$0.00	\$22.00	\$66.00	\$56.00
# Ithaca	<a href="mailto:ccameron@ithacami.com">ccameron@ithacami.com</a>	7/1/2011	989-875-3200	3,098	\$5.52	\$2.57	\$0.00	\$20.94	\$0.00	\$3.77	\$0.00	\$22.62	\$67.86	\$43.53
5 Birch Run	<a href="mailto:pmoore@villageofbirchrun.com">pmoore@villageofbirchrun.com</a>	7/1/2011	989-624-5711	1,600	\$16.00	\$4.05	\$0.00	\$40.30	\$18.33	\$0.00	\$5.00	\$23.33	\$69.99	\$63.63
	GLSWA	10/1/2012										\$23.33	\$70.00	
# Coopersville	<a href="mailto:klauters@cityofcoopersville.com">klauters@cityofcoopersville.com</a>	3/8/2010	616-997-9731	4,275	\$6.00	\$3.92	\$0.00	\$29.52	\$6.00	\$3.61	\$0.00	\$27.66	\$82.98	\$57.18
# South Haven	<a href="mailto:ksteinman@southhaven.com">ksteinman@southhaven.com</a>	7/1/2011	269-637-0700	5,021	\$8.81	\$2.66	\$0.00	\$24.77	\$7.78	\$3.38	\$0.00	\$28.06	\$84.18	\$52.83
# Greenville	<a href="mailto:speterman@greenvillemi.org">speterman@greenvillemi.org</a>	7/30/2010	616-754-5645	8,481	\$13.85	\$0.00	\$0.00	\$13.85	\$29.10	\$0.00	\$0.00	\$29.10	\$87.30	\$42.75
# Sparta	<a href="mailto:pbuchanan@spartami.org">pbuchanan@spartami.org</a>	12/1/2008	616-887-8251	4,159	\$16.25	\$2.29	\$0.00	\$29.99	\$7.33	\$3.65	\$0.00	\$29.23	\$87.69	\$59.22
# Saint Louis	<a href="mailto:tward@stlouismi.com">tward@stlouismi.com</a>	7/1/2009	989-681-2137	4,494	\$9.90	\$1.98	\$3.03	\$24.81	\$6.49	\$3.96	\$0.00	\$30.25	\$90.75	\$55.06
# Hartford	<a href="mailto:cityclerk@hartfordmi.com">cityclerk@hartfordmi.com</a>	3/1/2006	269-621-2477	2,476	\$5.67	\$2.20	\$3.00	\$21.87	\$1.97	\$4.40	\$2.61	\$30.98	\$92.94	\$52.85
# Vicksburg	<a href="mailto:skiel@vicksburgmi.org">skiel@vicksburgmi.org</a>	7/1/2009	269-649-1919	2,320	\$5.95	\$2.90	\$1.45	\$24.80	\$6.95	\$3.60	\$2.60	\$31.15	\$93.45	\$59.95
# Dowagiac	<a href="mailto:isnow@dowagiac.org">isnow@dowagiac.org</a>	11/1/2010	269-782-2195	6,147	\$8.25	\$2.25	\$0.00	\$21.75	\$13.25	\$2.99	\$0.00	\$31.19	\$93.57	\$52.94
# Parchment	<a href="mailto:records@parchment.org">records@parchment.org</a>	7/1/2010	269-349-3785	1,936	\$5.50	\$2.06	\$0.00	\$17.86	\$3.33	\$4.72	\$0.00	\$31.65	\$94.95	\$49.51
# Hastings	<a href="mailto:broush@hastingsmi.org">broush@hastingsmi.org</a>	7/1/2011	269-945-2468	7,095	\$5.59	\$1.70	\$0.00	\$15.79	\$11.25	\$3.55	\$0.00	\$32.55	\$97.65	\$48.35
9 Cedar Springs	<a href="mailto:debbie@wingsisp.com">debbie@wingsisp.com</a>	7/1/2011	616-896-1330	3,112	\$4.69	\$2.65	\$0.00	\$20.59	\$15.00	\$3.01	\$0.00	\$33.06	\$99.18	\$53.65
# Three Rivers	<a href="mailto:THeath@threeriversmi.org">THeath@threeriversmi.org</a>	6/13/2011	269-273-1075	7,328	\$0.00	\$3.19	\$0.00	\$19.14	\$0.00	\$5.62	\$0.00	\$33.72	\$101.16	\$52.86
# Wayland	<a href="mailto:jbeckwith@cityofwayland.org">jbeckwith@cityofwayland.org</a>	7/1/2008	269-792-2265	4,079	\$7.75	\$1.98	\$0.00	\$19.63	\$12.42	\$3.57	\$0.00	\$33.64	\$101.52	\$53.47
3 Belding	<a href="mailto:s.andres@ci.belding.mi.us">s.andres@ci.belding.mi.us</a>	6/30/2011	616-794-1900	5,757	\$6.73	\$1.31	\$0.00	\$14.59	\$11.83	\$3.68	\$0.00	\$33.91	\$101.73	\$55.23
# Plainwell	<a href="mailto:willfiner@plainwell.org">willfiner@plainwell.org</a>	7/1/2011	269-685-6821	3,804	\$6.64	\$1.88	\$0.00	\$17.92	\$1.50	\$4.20	\$0.00	\$34.20	\$102.60	\$52.12
# Inlay City	<a href="mailto:mfesterman@inlaycity.org">mfesterman@inlaycity.org</a>	9/1/2011	810-724-2135	3,597	\$10.40	\$3.43	\$0.00	\$30.98	\$10.68	\$3.97	\$0.00	\$34.50	\$103.50	\$65.48
# Middleville	<a href="mailto:dentone@villageofmiddleville.org">dentone@villageofmiddleville.org</a>	1/1/2011	269-795-3385	3,200	\$3.53	\$1.36	\$2.49	\$14.18	\$5.54	\$2.67	\$13.23	\$34.79	\$104.37	\$48.97
# Hudsonville	<a href="mailto:alambert@hudsonville.org">alambert@hudsonville.org</a>	7/1/2011	616-669-0200	7,160	\$15.93	\$2.05	\$0.00	\$28.23	\$14.00	\$3.50	\$0.00	\$35.00	\$105.00	\$63.23
# Otsego	<a href="mailto:ljameson@cityofotsego.org">ljameson@cityofotsego.org</a>	7/1/2011	269-694-6146	3,956	\$3.78	\$1.35	\$0.00	\$11.88	\$6.08	\$4.86	\$0.00	\$35.24	\$105.72	\$47.12
# Newaygo	<a href="mailto:aquick@newaygocity.org">aquick@newaygocity.org</a>	1/1/2010	231-652-1657	1,976	\$15.05	\$2.70	\$0.00	\$31.25	\$14.84	\$3.69	\$0.00	\$36.98	\$110.94	\$68.23
# Mattawan	<a href="mailto:offices@mattawanmi.com">offices@mattawanmi.com</a>	7/1/2007	269-668-2128	1,945	\$6.67	\$4.07	\$0.00	\$31.09	\$10.55	\$4.47	\$0.00	\$37.37	\$112.11	\$68.46
# Roosevelt Park	<a href="mailto:deputyclerk@rooseveltpark.org">deputyclerk@rooseveltpark.org</a>	12/1/2008	231-755-3721	3,890	\$8.31	\$3.38	\$0.00	\$28.59	\$9.95	\$4.66	\$0.00	\$37.91	\$113.73	\$66.50
1 Allegan	<a href="mailto:lbasett@cityofallegan.org">lbasett@cityofallegan.org</a>	7/1/2011	269-673-5511	4,998	\$15.42	\$3.39	\$0.00	\$35.76	\$15.81	\$3.79	\$0.00	\$38.55	\$115.85	\$74.31
# Lowell	<a href="mailto:lgerard@ci.lowell.mi.us">lgerard@ci.lowell.mi.us</a>	7/1/2008	616-897-8457	3,783	\$23.68	\$1.45	\$0.00	\$32.38	\$20.10	\$3.38	\$0.00	\$40.38	\$121.14	\$72.76
# Milan	<a href="mailto:sueh@ci.milan.mi.us">sueh@ci.milan.mi.us</a>	12/1/2009	734-439-1501	4,775	\$0.87	\$1.58	\$5.14	\$15.49	\$22.58	\$2.98	\$0.00	\$40.46	\$121.38	\$55.95
7 Buchanan	<a href="mailto:dklug@cityofbuchanan.com">dklug@cityofbuchanan.com</a>	7/1/2009	269-695-3844	4,681	\$7.90	\$3.07	\$0.00	\$26.32	\$7.90	\$5.46	\$0.00	\$40.66	\$121.98	\$66.98
# Portland	<a href="mailto:nmiller@portlandmichigan.org">nmiller@portlandmichigan.org</a>	2/1/2011	517-647-7531	3,789	\$10.12	\$2.62	\$0.00	\$25.84	\$15.62	\$4.20	\$0.00	\$40.82	\$122.46	\$66.66
6 Brighton	<a href="mailto:meierd@brightoncity.org">meierd@brightoncity.org</a>	7/1/2011	810-227-1911	6,701	\$4.13	\$2.71	\$0.00	\$20.39	\$21.79	\$3.38	\$0.00	\$42.07	\$126.21	\$62.46
4 Berrien Springs	<a href="mailto:berriensprings@bcglobal.net">berriensprings@bcglobal.net</a>	10/1/2006	269-473-6921	1,800	\$4.75	\$1.65	\$0.00	\$14.65	\$22.56	\$3.31	\$0.00	\$42.42	\$127.26	\$57.07
# Corunna	<a href="mailto:nsipicer@corunna-mi.gov">nsipicer@corunna-mi.gov</a>	7/1/2011	989-743-3650	3,381	\$13.00	\$2.30	\$8.75	\$35.55	\$10.50	\$2.85	\$15.50	\$43.10	\$129.30	\$78.65
# Sturgis	<a href="mailto:dperrault@sturgismi.gov">dperrault@sturgismi.gov</a>	10/1/2011	269-651-2321	10,994	\$10.40	\$2.20	\$0.00	\$23.60	\$0.00	\$4.40	\$16.90	\$43.30	\$129.90	\$66.90
# Springfield	<a href="mailto:pdejean@springfieldmich.com">pdejean@springfieldmich.com</a>	9/14/2011	269-965-2354	5,189	\$10.00	\$2.55	\$0.00	\$25.30	\$3.66	\$6.80	\$0.00	\$44.46	\$133.38	\$67.76
# Charlotte	<a href="mailto:cmoesner@charlottemi.org">cmoesner@charlottemi.org</a>	7/1/2010	517-543-2750	9,074	\$12.13	\$2.08	\$0.00	\$24.61	\$21.82	\$3.94	\$0.00	\$45.46	\$136.38	\$70.07
# Oxford	<a href="mailto:clerk@villageofoxford.org">clerk@villageofoxford.org</a>	7/1/2010	248-628-2543	3,540	\$18.10	\$3.41	\$0.00	\$31.74	\$22.85	\$3.81	\$0.00	\$45.71	\$137.13	\$77.45
# Clare	<a href="mailto:cdavis@cityofclare.org">cdavis@cityofclare.org</a>	7/1/2011	989-386-7541	3,173	\$10.00	\$2.34	\$1.00	\$25.04	\$20.11	\$4.28	\$0.00	\$45.79	\$137.37	\$70.83
# Constantine	<a href="mailto:mhoneysett@comcast.net">mhoneysett@comcast.net</a>	10/1/2004	269-435-2085	2,095	\$3.90	\$1.48	\$0.00	\$12.78	\$11.25	\$5.80	\$0.00	\$46.05	\$138.15	\$58.83
# Chelsea	<a href="mailto:mpicklesimer@city-chelsea.org">mpicklesimer@city-chelsea.org</a>	7/1/2011	734-475-1771	4,398	\$6.44	\$6.13	\$0.00	\$43.22	\$12.94	\$5.63	\$0.00	\$46.72	\$140.16	\$89.94
# Rockford	<a href="mailto:srogers@rockford.mi.us">srogers@rockford.mi.us</a>	5/1/2010	616-825-5005	5,719	\$9.46	\$2.82	\$0.00	\$26.38	\$11.95	\$3.03	\$17.50	\$47.63	\$142.89	\$74.01
# Durand	<a href="mailto:speters@durandmi.com">speters@durandmi.com</a>	7/1/2011	989-288-3113	3,933	\$13.75	\$4.05	\$0.00	\$38.05	\$21.00	\$4.80	\$0.00	\$49.80	\$149.40	\$87.85
8 Caro	<a href="mailto:caroclerk@centurytel.net">caroclerk@centurytel.net</a>	8/1/2010	989-673-2226	4,145	\$11.00	\$2.18	\$0.00	\$24.08	\$2.00	\$8.40	\$0.00	\$54.80	\$157.20	\$76.48
# Williamston	<a href="mailto:deputyclerk@cablespeed.com">deputyclerk@cablespeed.com</a>	7/1/2011	517-655-2774	3,441	\$21.10	\$2.81	\$0.00	\$37.96	\$20.01	\$5.52	\$0.00	\$53.13	\$159.39	\$91.09
2 Bangor	<a href="mailto:cityhall@bangormi.com">cityhall@bangormi.com</a>	7/1/2008	269-427-5831	1,933	\$9.00	\$3.26	\$0.00	\$28.56	\$0.00	\$6.26	\$3.01	\$55.62	\$166.86	\$84.15
# Essexville	<a href="mailto:treasurer@essexville.org">treasurer@essexville.org</a>	7/1/2010	989-893-7192	3,475	\$3.33	\$5.00	\$0.00	\$33.33	\$17.75	\$7.20	\$0.00	\$60.95	\$182.85	\$94.28
# Holly	<a href="mailto:twalker@hollyvillage.org">twalker@hollyvillage.org</a>	7/1/2011	248-634-9571	6,086	\$0.00	\$6.80	\$20.29	\$61.09	\$0.00	\$6.96	\$28.01	\$61.77	\$245.31	\$142.86
								AVG: \$26.24				AVG: \$38.90		\$64.38

Some conversions were necessary to make an accurate comparison.  
 Information was obtained by phone, fax, or email.  
 Rates were based on one month of service with a usage of 6,000 gallons for water and sewer on a 3/4" metered residential customer.  
 This survey does not take into account a municipality's costs related to the facility and/or type of treatment required.

# Rate Comparisons - at 4000 gal/month

## Community Water and Sewer Rate Comparisons - December 2011

Community	Contact Email	Date of Last Adj.	Contact #	Pop.	Monthly Water R.T.S. Rate	Water O & M /1000gls	Water Other	Monthly Total @ 6,000 glns	Monthly Sewer R.T.S. Rate	Sewer O & M /1000gls	Sewer Other	SEWER ONLY		Monthly Total Water & Sewer	
												Monthly Total @ 4000 glns	Quarterly Total @ 4000 glns		
# Ferrysburg	<a href="mailto:dwierena@ferrysburg.org">dwierena@ferrysburg.org</a>	7/1/2008	616-842-5803	3,040	\$8.96	\$2.88	\$0.00	\$26.24	\$4.47	\$2.42	\$0.00	\$14.15	\$42.45	\$45.23	
# Ithaca	<a href="mailto:ccameron@ithacami.com">ccameron@ithacami.com</a>	7/1/2011	989-875-3200	3,098	\$5.52	\$2.57	\$0.00	\$20.94	\$0.00	\$3.77	\$0.00	\$15.08	\$45.24	\$43.53	
# North Muskegon	<a href="mailto:kmattson@cityofnorthmuskegon.com">kmattson@cityofnorthmuskegon.com</a>	4/1/2011	231-744-1621	3,786	\$8.33	\$4.14	\$0.00	\$33.17	\$5.42	\$2.74	\$0.00	\$16.38	\$49.14	\$55.05	
# Paw Paw	<a href="mailto:c.tapper@pawpaw.net">c.tapper@pawpaw.net</a>	7/1/2005	269-657-3148	3,363	\$13.65	\$1.49	\$0.00	\$22.59	\$9.20	\$2.07	\$0.00	\$17.48	\$52.44	\$44.21	
# Plainwell	<a href="mailto:swillinger@plainwell.org">swillinger@plainwell.org</a>	7/1/2011	269-685-6821	3,804	\$6.64	\$1.88	\$0.00	\$17.92	\$1.50	\$4.20	\$0.00	\$18.30	\$54.90	\$52.12	
# Coopersville	<a href="mailto:kiauters@cityofcoopersville.com">kiauters@cityofcoopersville.com</a>	3/8/2010	616-997-9731	4,275	\$6.00	\$3.92	\$0.00	\$29.52	\$6.00	\$3.61	\$0.00	\$20.44	\$61.32	\$57.18	
# South Haven	<a href="mailto:ksteinman@south-haven.com">ksteinman@south-haven.com</a>	7/1/2011	269-637-0700	5,021	\$8.81	\$2.66	\$0.00	\$24.77	\$7.78	\$3.38	\$0.00	\$21.30	\$63.90	\$52.83	
GLSWA		7/26/2012										\$21.67	\$65.00		
# Sparta	<a href="mailto:pbuchanan@spartami.org">pbuchanan@spartami.org</a>	12/1/2008	616-887-8251	4,159	\$16.25	\$2.29	\$0.00	\$29.99	\$7.33	\$3.65	\$0.00	\$21.93	\$65.79	\$59.22	
# Sun Lake	<a href="mailto:ajasa@fnwaters.com">ajasa@fnwaters.com</a>	1/1/2005	269-672-5588	2,200	\$22.00	\$2.00	\$0.00	\$34.00	\$22.00	\$0.00	\$0.00	\$22.00	\$66.00	\$58.00	
# Hartford	<a href="mailto:cityclerk@hartfordmi.com">cityclerk@hartfordmi.com</a>	3/1/2006	269-621-2477	2,476	\$5.67	\$2.20	\$3.00	\$21.87	\$1.97	\$4.40	\$2.61	\$22.18	\$66.54	\$52.85	
# Parchment	<a href="mailto:records@parchment.org">records@parchment.org</a>	7/1/2010	269-349-3785	1,936	\$5.50	\$2.06	\$0.00	\$17.86	\$3.33	\$4.72	\$0.00	\$22.21	\$66.63	\$49.51	
# Saint Louis	<a href="mailto:ward@stlouismi.com">ward@stlouismi.com</a>	7/1/2009	989-681-2137	4,494	\$9.90	\$1.98	\$3.03	\$24.81	\$6.49	\$3.96	\$0.00	\$22.33	\$66.99	\$55.06	
# Three Rivers	<a href="mailto:THearth@threeriversmi.org">THearth@threeriversmi.org</a>	6/13/2011	269-273-1075	7,328	\$0.00	\$3.19	\$0.00	\$19.14	\$0.00	\$5.62	\$0.00	\$22.48	\$67.44	\$52.86	
5 Birch Run	<a href="mailto:pmoore@villageofbirchrun.com">pmoore@villageofbirchrun.com</a>	7/1/2011	989-624-5711	1,600	\$16.00	\$4.05	\$0.00	\$40.30	\$18.33	\$0.00	\$5.00	\$23.33	\$69.99	\$63.63	
GLSWA		10/1/2012										\$23.33	\$70.00		
# Vicksburg	<a href="mailto:skiel@vicksburgmi.org">skiel@vicksburgmi.org</a>	7/1/2009	269-649-1919	2,320	\$5.95	\$2.90	\$1.45	\$24.80	\$6.95	\$3.60	\$2.60	\$23.95	\$71.85	\$55.95	
# Dowagiac	<a href="mailto:isnow@dowagiac.org">isnow@dowagiac.org</a>	11/1/2010	269-782-2195	6,147	\$8.25	\$2.25	\$0.00	\$21.75	\$13.25	\$2.99	\$0.00	\$25.21	\$75.63	\$52.94	
# Hastings	<a href="mailto:broush@hastingsmi.org">broush@hastingsmi.org</a>	7/1/2011	269-945-2468	7,095	\$5.59	\$1.70	\$0.00	\$15.79	\$11.25	\$3.55	\$0.00	\$25.45	\$76.35	\$48.35	
# Otsego	<a href="mailto:jameson@cityofotsego.org">jameson@cityofotsego.org</a>	7/1/2011	269-694-6146	3,956	\$3.78	\$1.35	\$0.00	\$11.88	\$6.08	\$4.86	\$0.00	\$25.52	\$76.56	\$47.12	
# Belding	<a href="mailto:s.andres@ci.belding.mi.us">s.andres@ci.belding.mi.us</a>	6/30/2011	616-794-1900	5,757	\$6.73	\$1.31	\$0.00	\$14.59	\$11.83	\$3.68	\$0.00	\$26.55	\$79.65	\$55.23	
3 Inlay City	<a href="mailto:mfeisterman@inlaycity.org">mfeisterman@inlaycity.org</a>	9/1/2011	610-724-2135	3,597	\$10.40	\$3.43	\$0.00	\$30.98	\$10.68	\$3.97	\$0.00	\$26.56	\$97.68	\$65.48	
# Wayland	<a href="mailto:lbeckwith@cityofwayland.org">lbeckwith@cityofwayland.org</a>	7/1/2008	269-792-2265	4,079	\$7.75	\$1.98	\$0.00	\$19.63	\$12.42	\$3.57	\$0.00	\$26.70	\$60.10	\$53.47	
9 Cedar Springs	<a href="mailto:debbies@wingspa.com">debbies@wingspa.com</a>	7/1/2011	616-696-1330	3,112	\$4.69	\$2.65	\$0.00	\$20.59	\$15.00	\$3.01	\$0.00	\$27.04	\$81.12	\$53.65	
# Hudsonville	<a href="mailto:alambert@hudsonville.org">alambert@hudsonville.org</a>	7/1/2011	616-669-0200	7,160	\$15.93	\$2.05	\$0.00	\$28.23	\$14.00	\$3.50	\$0.00	\$28.00	\$84.00	\$63.23	
2 Bangor	<a href="mailto:cityhall@bangormi.com">cityhall@bangormi.com</a>	7/1/2008	269-427-5831	1,933	\$9.00	\$3.26	\$0.00	\$28.56	\$0.00	\$6.26	\$3.01	\$28.05	\$84.15	\$84.15	
# Mattawan	<a href="mailto:offices@mattawanmi.com">offices@mattawanmi.com</a>	7/1/2007	269-668-2128	1,945	\$6.67	\$4.07	\$0.00	\$31.09	\$10.55	\$4.47	\$0.00	\$28.43	\$85.29	\$68.46	
# Roosevelt Park	<a href="mailto:deputyclerk@rooseveltpark.org">deputyclerk@rooseveltpark.org</a>	12/1/2008	231-755-3721	3,890	\$8.31	\$3.38	\$0.00	\$28.59	\$9.95	\$4.66	\$0.00	\$28.59	\$85.77	\$66.50	
# Greenville	<a href="mailto:epeterman@greenvillemi.org">epeterman@greenvillemi.org</a>	7/30/2010	616-754-5645	8,481	\$13.65	\$0.00	\$0.00	\$13.65	\$29.10	\$0.00	\$0.00	\$29.10	\$87.30	\$42.75	
# Middleville	<a href="mailto:dentone@villageofmiddleville.org">dentone@villageofmiddleville.org</a>	1/1/2011	269-795-3385	3,200	\$3.53	\$1.36	\$2.49	\$14.18	\$5.54	\$2.67	\$13.23	\$29.45	\$88.35	\$48.97	
# Newaygo	<a href="mailto:aquick@newaygocity.org">aquick@newaygocity.org</a>	1/1/2010	231-652-1657	1,976	\$15.05	\$2.70	\$0.00	\$31.25	\$14.84	\$3.69	\$0.00	\$29.60	\$88.80	\$68.23	
7 Buchanan	<a href="mailto:dkluga@cityofbuchanan.com">dkluga@cityofbuchanan.com</a>	7/1/2009	269-695-3844	4,681	\$7.90	\$3.07	\$0.00	\$26.32	\$7.90	\$5.46	\$0.00	\$29.74	\$89.22	\$66.98	
# Springfield	<a href="mailto:pdejean@springfieldmi.org">pdejean@springfieldmi.org</a>	9/14/2011	269-965-2354	5,189	\$10.00	\$2.55	\$0.00	\$25.30	\$3.66	\$6.80	\$0.00	\$30.86	\$92.58	\$69.76	
1 Allegan	<a href="mailto:lbassett@cityofallegan.org">lbassett@cityofallegan.org</a>	7/1/2011	269-673-5511	4,998	\$15.42	\$3.39	\$0.00	\$35.76	\$15.81	\$3.79	\$0.00	\$30.97	\$92.91	\$66.73	
# Portland	<a href="mailto:nmiller@portlandmi.org">nmiller@portlandmi.org</a>	2/1/2011	517-647-7531	3,789	\$10.12	\$2.62	\$0.00	\$25.84	\$15.62	\$4.20	\$0.00	\$32.42	\$97.26	\$66.66	
# Lowell	<a href="mailto:lcorradi@ci.lowell.mi.us">lcorradi@ci.lowell.mi.us</a>	7/1/2008	616-897-9457	3,783	\$23.68	\$1.45	\$0.00	\$32.38	\$20.10	\$3.38	\$0.00	\$33.62	\$100.86	\$72.76	
# Constantine	<a href="mailto:mhoneysett@comcast.net">mhoneysett@comcast.net</a>	10/1/2004	269-435-2085	2,095	\$3.90	\$1.48	\$0.00	\$12.78	\$11.25	\$5.80	\$0.00	\$34.45	\$103.35	\$58.83	
# Milan	<a href="mailto:sueh@ci.milan.mi.us">sueh@ci.milan.mi.us</a>	12/1/2009	734-439-1501	4,775	\$0.87	\$1.58	\$5.14	\$15.49	\$22.58	\$2.98	\$0.00	\$34.50	\$103.50	\$55.95	
# Sturgis	<a href="mailto:dperrault@sturgismi.gov">dperrault@sturgismi.gov</a>	10/1/2011	269-651-2321	10,994	\$10.40	\$2.20	\$0.00	\$23.60	\$0.00	\$4.40	\$16.90	\$34.50	\$103.50	\$66.90	
6 Brighton	<a href="mailto:meierd@brightontcity.org">meierd@brightontcity.org</a>	7/1/2011	810-227-1911	6,701	\$4.13	\$2.71	\$0.00	\$20.39	\$21.79	\$3.38	\$0.00	\$35.31	\$105.93	\$62.46	
# Chelsea	<a href="mailto:mpicklesimer@city.chelsea.org">mpicklesimer@city.chelsea.org</a>	7/1/2011	734-475-1771	4,398	\$6.44	\$6.13	\$0.00	\$43.22	\$12.94	\$5.63	\$0.00	\$35.46	\$106.38	\$89.94	
8 Caro	<a href="mailto:caroclerk@centurytel.net">caroclerk@centurytel.net</a>	8/1/2010	989-673-2226	4,145	\$11.00	\$2.18	\$0.00	\$24.08	\$2.00	\$8.40	\$0.00	\$35.60	\$106.80	\$76.48	
4 Berrien Springs	<a href="mailto:berriensprings@sbcolobal.net">berriensprings@sbcolobal.net</a>	10/1/2006	269-473-6921	1,800	\$4.75	\$1.65	\$0.00	\$14.65	\$22.56	\$3.31	\$0.00	\$35.80	\$107.40	\$57.07	
# Clare	<a href="mailto:cdivis@cityofclare.org">cdivis@cityofclare.org</a>	7/1/2011	989-386-7541	3,173	\$10.00	\$2.34	\$1.00	\$25.04	\$20.11	\$4.28	\$0.00	\$37.23	\$111.69	\$70.83	
# Corunna	<a href="mailto:nspicer@corunna-mi.org">nspicer@corunna-mi.org</a>	7/1/2011	989-743-3650	5,081	\$13.00	\$2.30	\$8.75	\$35.55	\$10.50	\$2.85	\$15.50	\$37.40	\$112.20	\$78.65	
# Charlotte	<a href="mailto:cmossner@charlottemi.org">cmossner@charlottemi.org</a>	7/1/2010	517-543-2750	3,374	\$12.13	\$2.08	\$0.00	\$24.61	\$21.82	\$3.94	\$0.00	\$37.58	\$112.74	\$70.07	
# Oxford	<a href="mailto:clerk@villageofoxford.org">clerk@villageofoxford.org</a>	7/1/2010	248-628-2543	3,540	\$18.10	\$3.41	\$0.00	\$31.74	\$22.85	\$3.61	\$0.00	\$36.09	\$114.27	\$77.45	
# Durand	<a href="mailto:speters@durandmi.com">speters@durandmi.com</a>	7/1/2011	989-289-3113	3,933	\$13.75	\$4.05	\$0.00	\$38.05	\$21.00	\$4.80	\$0.00	\$40.20	\$120.60	\$87.85	
# Rockford	<a href="mailto:crogers@rockfordmi.us">crogers@rockfordmi.us</a>	5/1/2010	616-825-5005	5,719	\$6.46	\$2.82	\$0.00	\$26.38	\$11.95	\$3.03	\$17.50	\$41.57	\$124.71	\$74.01	
# Williamston	<a href="mailto:deputyclerk@cablespeed.com">deputyclerk@cablespeed.com</a>	7/1/2011	517-655-2774	3,441	\$21.10	\$2.81	\$0.00	\$37.96	\$20.01	\$5.52	\$0.00	\$42.09	\$126.27	\$91.09	
# Essexville	<a href="mailto:ctreasurer@essexville.org">ctreasurer@essexville.org</a>	7/1/2010	989-893-7192	3,475	\$3.33	\$5.00	\$0.00	\$33.33	\$17.75	\$7.20	\$0.00	\$46.55	\$139.65	\$94.28	
# Holly	<a href="mailto:iwalker@hollyvillage.org">iwalker@hollyvillage.org</a>	7/1/2011	248-634-9571	6,086	\$0.00	\$6.80	\$20.29	\$61.09	\$0.00	\$8.96	\$28.01	\$63.85	\$191.55	\$142.86	
								AVG:				\$26.24			\$64.23
													AVG:	\$30.41	\$64.23

Some conversions were necessary to make an accurate comparison.  
 Information was obtained by phone, fax, or email.  
 Rates were based on one month of service with a usage of 6,000 gallons for water and sewer on a 3/4" metered residential customer.  
 This survey does not take into account a municipality's costs related to the facility and/or type of treatment required.

# Rate Comparisons - at 2000 gal/month

## Community Water and Sewer Rate Comparisons - December 2011

Community	Contact Email	Date of Last Adj.	Contact #	Pop.	Monthly Water R.T.S. Rate	Water O & M /1000gals	Water Other	Monthly Total @ 6,000 glns	Monthly Sewer R.T.S. Rate	Sewer O & M /1000glns	Sewer Other	SEWER ONLY	SEWER ONLY	Monthly Total Water & Sewer
												Monthly Total @ 2000 glns	Quarterly Total @ 2000 glns	
# Ithaca	<a href="mailto:ccameron@ithacami.com">ccameron@ithacami.com</a>	7/1/2011	989-875-3200	3,098	\$5.52	\$2.57	\$0.00	\$20.94	\$0.00	\$3.77	\$0.00	\$7.54	\$22.62	\$43.53
# Ferrysburg	<a href="mailto:dwierraga@ferrysburg.org">dwierraga@ferrysburg.org</a>	7/1/2008	616-842-5803	3,040	\$8.96	\$2.88	\$0.00	\$26.24	\$4.47	\$2.42	\$0.00	\$9.31	\$27.93	\$45.23
# Plainwell	<a href="mailto:swillinger@plainwell.org">swillinger@plainwell.org</a>	7/1/2011	269-685-6821	3,804	\$6.64	\$1.88	\$0.00	\$17.92	\$1.50	\$4.20	\$0.00	\$9.90	\$29.70	\$52.12
# North Muskegon	<a href="mailto:kmattson@cityofnorthmuskegon.com">kmattson@cityofnorthmuskegon.com</a>	4/1/2011	231-744-1621	3,786	\$8.33	\$4.14	\$0.00	\$33.17	\$5.42	\$2.74	\$0.00	\$10.90	\$32.70	\$55.05
# Three Rivers	<a href="mailto:THeath@threeriversmi.org">THeath@threeriversmi.org</a>	6/13/2011	269-273-1075	7,328	\$0.00	\$3.19	\$0.00	\$19.14	\$0.00	\$5.62	\$0.00	\$11.24	\$33.72	\$52.86
# Parchment	<a href="mailto:records@parchment.org">records@parchment.org</a>	7/1/2010	269-349-3785	1,936	\$5.50	\$2.06	\$0.00	\$17.86	\$3.33	\$4.72	\$0.00	\$12.77	\$38.31	\$49.51
# Coopersville	<a href="mailto:klauners@cityofcoopersville.com">klauners@cityofcoopersville.com</a>	3/8/2010	616-997-9731	4,275	\$6.00	\$3.92	\$0.00	\$29.52	\$6.00	\$3.61	\$0.00	\$13.22	\$39.66	\$57.18
# Paw Paw	<a href="mailto:c.tapper@pawpaw.net">c.tapper@pawpaw.net</a>	7/1/2005	269-657-3148	3,383	\$13.65	\$1.49	\$0.00	\$22.59	\$9.20	\$2.07	\$0.00	\$13.34	\$40.03	\$44.21
# Hartford	<a href="mailto:cityclerk@hartfordmi.com">cityclerk@hartfordmi.com</a>	3/1/2006	269-621-2477	2,476	\$5.67	\$2.20	\$3.00	\$21.87	\$1.97	\$4.40	\$2.61	\$13.38	\$40.14	\$52.85
# Saint Louis	<a href="mailto:tward@stlouismi.com">tward@stlouismi.com</a>	7/1/2009	989-681-2137	4,494	\$9.90	\$1.98	\$3.03	\$24.81	\$6.49	\$3.96	\$0.00	\$14.41	\$43.23	\$55.06
# South Haven	<a href="mailto:ksteinman@south-haven.com">ksteinman@south-haven.com</a>	7/1/2011	269-637-0700	5,021	\$8.81	\$2.66	\$0.00	\$24.77	\$7.78	\$3.38	\$0.00	\$14.54	\$43.62	\$52.83
# Sparta	<a href="mailto:pbuchanan@spartami.org">pbuchanan@spartami.org</a>	12/1/2008	616-887-8251	4,159	\$16.25	\$2.29	\$0.00	\$29.99	\$7.33	\$3.65	\$0.00	\$14.63	\$43.89	\$59.22
2 Bangor	<a href="mailto:cityhall@bangormi.com">cityhall@bangormi.com</a>	7/1/2008	269-427-5831	1,933	\$9.00	\$3.26	\$0.00	\$28.56	\$0.00	\$6.26	\$3.01	\$15.53	\$46.59	\$84.15
# Otsego	<a href="mailto:jjameson@cityofotsego.org">jjameson@cityofotsego.org</a>	7/1/2011	269-694-6146	3,956	\$3.78	\$1.35	\$0.00	\$11.88	\$6.08	\$4.86	\$0.00	\$15.80	\$47.40	\$47.12
# Vicksburg	<a href="mailto:gkiel@vicksburgmi.org">gkiel@vicksburgmi.org</a>	7/1/2009	269-649-1919	2,320	\$5.95	\$2.90	\$1.45	\$24.80	\$6.95	\$3.60	\$2.60	\$16.75	\$50.25	\$55.95
# Springfield	<a href="mailto:pdjean@springfieldmiich.com">pdjean@springfieldmiich.com</a>	9/14/2011	269-965-2354	5,189	\$10.00	\$2.55	\$0.00	\$25.30	\$3.66	\$6.80	\$0.00	\$17.38	\$51.78	\$69.76
# Hastings	<a href="mailto:brough@hastingsmi.org">brough@hastingsmi.org</a>	7/1/2011	269-945-2468	7,095	\$5.59	\$1.70	\$0.00	\$15.79	\$11.25	\$3.55	\$0.00	\$18.35	\$55.05	\$48.35
# Inlay City	<a href="mailto:nfesterman@inlaycity.org">nfesterman@inlaycity.org</a>	9/1/2011	810-724-2135	3,597	\$10.40	\$3.43	\$0.00	\$30.98	\$10.68	\$3.97	\$0.00	\$18.62	\$55.86	\$65.48
8 Caro	<a href="mailto:caroclerk@centurytel.net">caroclerk@centurytel.net</a>	8/1/2010	989-673-2226	4,145	\$11.00	\$2.18	\$0.00	\$24.08	\$2.00	\$8.40	\$0.00	\$18.80	\$56.40	\$76.48
7 Buchanan	<a href="mailto:dklug@cityofbuchanan.com">dklug@cityofbuchanan.com</a>	7/1/2009	269-695-3844	4,681	\$7.90	\$3.07	\$0.00	\$26.32	\$7.90	\$5.46	\$0.00	\$18.82	\$56.46	\$66.98
3 Belding	<a href="mailto:s.andres@ci.belding.mi.us">s.andres@ci.belding.mi.us</a>	6/30/2011	616-794-1900	5,757	\$6.73	\$1.31	\$0.00	\$14.59	\$11.83	\$3.68	\$0.00	\$19.19	\$57.57	\$55.23
# Dowagiac	<a href="mailto:jnow@downagiac.org">jnow@downagiac.org</a>	11/1/2010	269-782-2195	6,147	\$8.25	\$2.25	\$0.00	\$21.75	\$13.25	\$2.99	\$0.00	\$19.23	\$57.69	\$52.94
# Roosevelt Park	<a href="mailto:deputyclerk@rooseveltpark.org">deputyclerk@rooseveltpark.org</a>	12/1/2008	231-755-3721	3,890	\$8.31	\$3.38	\$0.00	\$28.59	\$9.95	\$4.66	\$0.00	\$19.27	\$57.81	\$66.50
# Mattawan	<a href="mailto:offices@mattawanni.com">offices@mattawanni.com</a>	7/1/2007	269-668-2128	1,945	\$6.67	\$4.07	\$0.00	\$31.09	\$10.55	\$4.47	\$0.00	\$19.49	\$58.47	\$68.46
# Wayland	<a href="mailto:ibeckwith@cityofwayland.org">ibeckwith@cityofwayland.org</a>	7/1/2008	269-792-2265	4,079	\$7.75	\$1.98	\$0.00	\$19.63	\$12.42	\$3.57	\$0.00	\$19.56	\$58.68	\$53.47
# Hudsonville	<a href="mailto:alambert@hudsonville.org">alambert@hudsonville.org</a>	7/1/2011	616-669-0200	7,160	\$15.93	\$2.05	\$0.00	\$28.23	\$14.00	\$3.50	\$0.00	\$21.00	\$63.00	\$63.23
9 Cedar Springs	<a href="mailto:debvie@wingsisp.com">debvie@wingsisp.com</a>	7/1/2011	616-696-1330	3,112	\$4.69	\$2.65	\$0.00	\$20.59	\$15.00	\$3.01	\$0.00	\$21.02	\$63.06	\$53.65
GLSWA		7/26/2012										\$21.67	\$65.00	
# Gun Lake	<a href="mailto:glasa@fnusers.com">glasa@fnusers.com</a>	1/1/2005	269-672-5588	2,200	\$22.00	\$2.00	\$0.00	\$34.00	\$22.00	\$0.00	\$0.00	\$22.00	\$66.00	\$56.00
# Newaygo	<a href="mailto:aquik@newaygocity.org">aquik@newaygocity.org</a>	1/1/2010	231-652-1657	1,976	\$15.05	\$2.70	\$0.00	\$31.25	\$14.84	\$3.69	\$0.00	\$22.22	\$66.66	\$68.23
# Constantine	<a href="mailto:nhonevsett@comcast.net">nhonevsett@comcast.net</a>	10/1/2004	269-435-2085	2,095	\$3.90	\$1.48	\$0.00	\$12.78	\$11.25	\$5.80	\$0.00	\$22.85	\$66.55	\$58.83
GLSWA		10/1/2012										\$23.33	\$70.00	
5 Birch Run	<a href="mailto:pmoore@villageofbirchrun.com">pmoore@villageofbirchrun.com</a>	7/1/2011	989-624-5711	1,600	\$16.00	\$4.05	\$0.00	\$40.30	\$18.33	\$0.00	\$5.00	\$23.33	\$69.99	\$63.63
1 Allegan	<a href="mailto:lbassett@cityofallegan.org">lbassett@cityofallegan.org</a>	7/1/2011	269-673-5511	4,998	\$15.42	\$3.39	\$0.00	\$35.76	\$15.81	\$3.79	\$0.00	\$23.39	\$70.17	\$59.15
# Portland	<a href="mailto:nmiller@portlandmichigan.org">nmiller@portlandmichigan.org</a>	2/1/2011	517-647-7531	3,789	\$10.12	\$2.62	\$0.00	\$25.84	\$15.62	\$4.20	\$0.00	\$24.02	\$72.06	\$66.66
# Middleville	<a href="mailto:denlone@villageofmiddleville.org">denlone@villageofmiddleville.org</a>	1/1/2011	269-796-3385	3,200	\$3.53	\$1.36	\$2.49	\$14.18	\$5.54	\$2.67	\$13.23	\$24.11	\$72.33	\$48.97
# Chelsea	<a href="mailto:npoakes@cityofchelsea.org">npoakes@cityofchelsea.org</a>	7/1/2011	734-475-1771	4,398	\$6.44	\$6.13	\$0.00	\$43.22	\$12.94	\$5.63	\$0.00	\$24.20	\$72.80	\$89.94
# Sturgis	<a href="mailto:deerrault@sturgismi.gov">deerrault@sturgismi.gov</a>	10/1/2011	269-651-2321	10,994	\$10.40	\$2.20	\$0.00	\$23.60	\$0.00	\$4.40	\$16.90	\$25.70	\$77.10	\$66.90
# Lowell	<a href="mailto:loerard@ci.lowell.mi.us">loerard@ci.lowell.mi.us</a>	7/1/2008	616-897-8457	3,783	\$32.68	\$1.45	\$0.00	\$32.38	\$20.10	\$3.30	\$0.00	\$26.86	\$80.58	\$72.76
# Milan	<a href="mailto:sush@ci.milan.mi.us">sush@ci.milan.mi.us</a>	12/1/2009	734-439-1501	4,775	\$0.87	\$1.58	\$5.14	\$15.49	\$22.58	\$2.98	\$0.00	\$28.54	\$85.62	\$55.95
6 Brighton	<a href="mailto:meierd@brightoncity.org">meierd@brightoncity.org</a>	7/1/2011	810-227-1911	6,701	\$4.13	\$2.71	\$0.00	\$20.39	\$21.79	\$3.38	\$0.00	\$28.55	\$85.65	\$62.46
# Clare	<a href="mailto:cdavis@cityofclare.org">cdavis@cityofclare.org</a>	7/1/2011	989-386-7541	3,173	\$10.00	\$2.34	\$1.00	\$25.04	\$20.11	\$4.28	\$0.00	\$28.67	\$86.01	\$70.83
# Greenville	<a href="mailto:speterman@greenvillemi.org">speterman@greenvillemi.org</a>	7/30/2010	616-754-5645	8,481	\$13.65	\$0.00	\$0.00	\$13.65	\$29.10	\$0.00	\$0.00	\$29.10	\$87.30	\$42.75
4 Bernien Springs	<a href="mailto:berniensprings@ebcglobal.net">berniensprings@ebcglobal.net</a>	10/1/2006	269-473-8921	1,800	\$4.75	\$1.65	\$0.00	\$14.65	\$22.56	\$3.31	\$0.00	\$29.18	\$87.54	\$57.07
# Charlotte	<a href="mailto:cmossner@charlottemi.org">cmossner@charlottemi.org</a>	7/1/2010	517-543-2750	9,074	\$12.13	\$2.08	\$0.00	\$24.61	\$21.82	\$3.84	\$0.00	\$29.70	\$89.10	\$70.07
# Oxford	<a href="mailto:clerk@villageofoxford.org">clerk@villageofoxford.org</a>	7/1/2010	248-628-2543	3,540	\$18.10	\$3.41	\$0.00	\$31.74	\$22.85	\$3.81	\$0.00	\$30.47	\$91.41	\$77.45
# Durand	<a href="mailto:speters@durandmi.com">speters@durandmi.com</a>	7/1/2011	989-288-3113	3,933	\$13.75	\$4.05	\$0.00	\$38.05	\$21.00	\$4.80	\$0.00	\$30.60	\$91.80	\$87.85
# Williamston	<a href="mailto:deputyclerk@cablespeed.com">deputyclerk@cablespeed.com</a>	7/1/2011	517-655-2774	3,441	\$21.10	\$2.81	\$0.00	\$37.96	\$20.01	\$5.52	\$0.00	\$31.05	\$93.15	\$91.09
# Corunna	<a href="mailto:nspicer@corunna-mi.gov">nspicer@corunna-mi.gov</a>	7/1/2011	989-743-3650	3,381	\$13.00	\$2.30	\$8.75	\$35.55	\$10.50	\$2.85	\$15.50	\$31.70	\$95.10	\$78.65
# Essexville	<a href="mailto:clrasurer@essexville.org">clrasurer@essexville.org</a>	7/1/2010	989-893-7192	3,475	\$3.33	\$5.00	\$0.00	\$33.33	\$17.75	\$7.20	\$0.00	\$32.15	\$96.45	\$94.28
# Rockford	<a href="mailto:rogers@rockford.mi.us">rogers@rockford.mi.us</a>	5/1/2010	616-825-5005	5,719	\$9.46	\$2.82	\$0.00	\$26.38	\$11.95	\$3.03	\$17.50	\$35.51	\$106.53	\$74.01
# Holly	<a href="mailto:walker@hollyvillage.org">walker@hollyvillage.org</a>	7/1/2011	248-634-9571	6,086	\$0.00	\$6.80	\$20.29	\$61.09	\$0.00	\$8.96	\$28.01	\$45.93	\$137.79	\$142.86
AVG:					\$26.24			\$26.24				\$22.37	\$64.08	

Some conversions were necessary to make an accurate comparison.

Information was obtained by phone, fax, or email.  
Rates were based on one month of services with a usage of 6,000 gallons for water and sewer on a 3/4" metered residential customer.  
This survey does not take into account a municipality's costs related to the facility and/or type of treatment required.

# Gull Lake Sewer + Water Authority Workshop

Ordinance Update Recommendation



# Authority Board Recommendation

## Proposed Ordinance changes

- Ability to add “ready-to-serve” basic flat rate charge
- Ability to use water meter readings for sewer billing
- Add Clean Water Elimination implementation + enforcement
- Add updated Grease Elimination implementation + enforcement
- Add Miscellaneous user fee
- Add permit for tear-down rebuild inspection + camera
- Strengthen definition of Connection Fee
- Allow for disconnection of sewer service for foreclosure or bankruptcy

## Providing for:

- To address foreclosures sitting vacant waiting for sale
- To provide for future water use – sewer billing (import data from Kalamazoo / Parchment-2013)
- For sump pump water to sewer, if it contains chemicals, must be metered to stay connected
- Grease trap enforcement going forward
- Miscellaneous Fee for nuisance costs
- Fee for Tear-down inspection
- Connection Fee to be recommended by Authority prior to establishment
- Ability to collect contract lien or sewer assessment lien that becomes uncollectable.





# Authority Board Recommendation

- Approve the prepared resolution to adopt the revised ordinance on the dates presented below:

: for a December 1<sup>st</sup> effective date (to be confirmed):

- |  |                      |
|--|----------------------|
| • Cooper Township (1 <sup>st</sup> read) | October 8, 2012      |
| • Barry Township                         | November 5(?), 2012  |
| • Cooper Township (2 <sup>nd</sup> read) | November 12(?), 2012 |
| • Richland Village                       | November 12, 2012    |
| • Ross Township                          | November 13, 2012    |
| • Prairieville Township                  | November 14, 2012    |
| • Richland Township                      | November 20, 2012    |
| • Charleston Township                    | November 27, 2012    |



END OF FORMAL PRESENTATION

Thank You.

Gull Lake Sewer + Water Authority