

‘SCI-FI’ Short Film

£2 Million Budget



SYNOPSIS:

A family of three on the run in a new world when unfortunately, their plans of escaping fall short when the dad's curiosity gets the better of him.

- Producing with a £2 million Budget.
- Based in London Area
- Filming at two separate locations
- Shooting 12 days
- Production days 16 days
- Typical Crew Numbers: 51
- Typical Cast Numbers: 3
- Typical Production cost per day:

Contents

Page No.

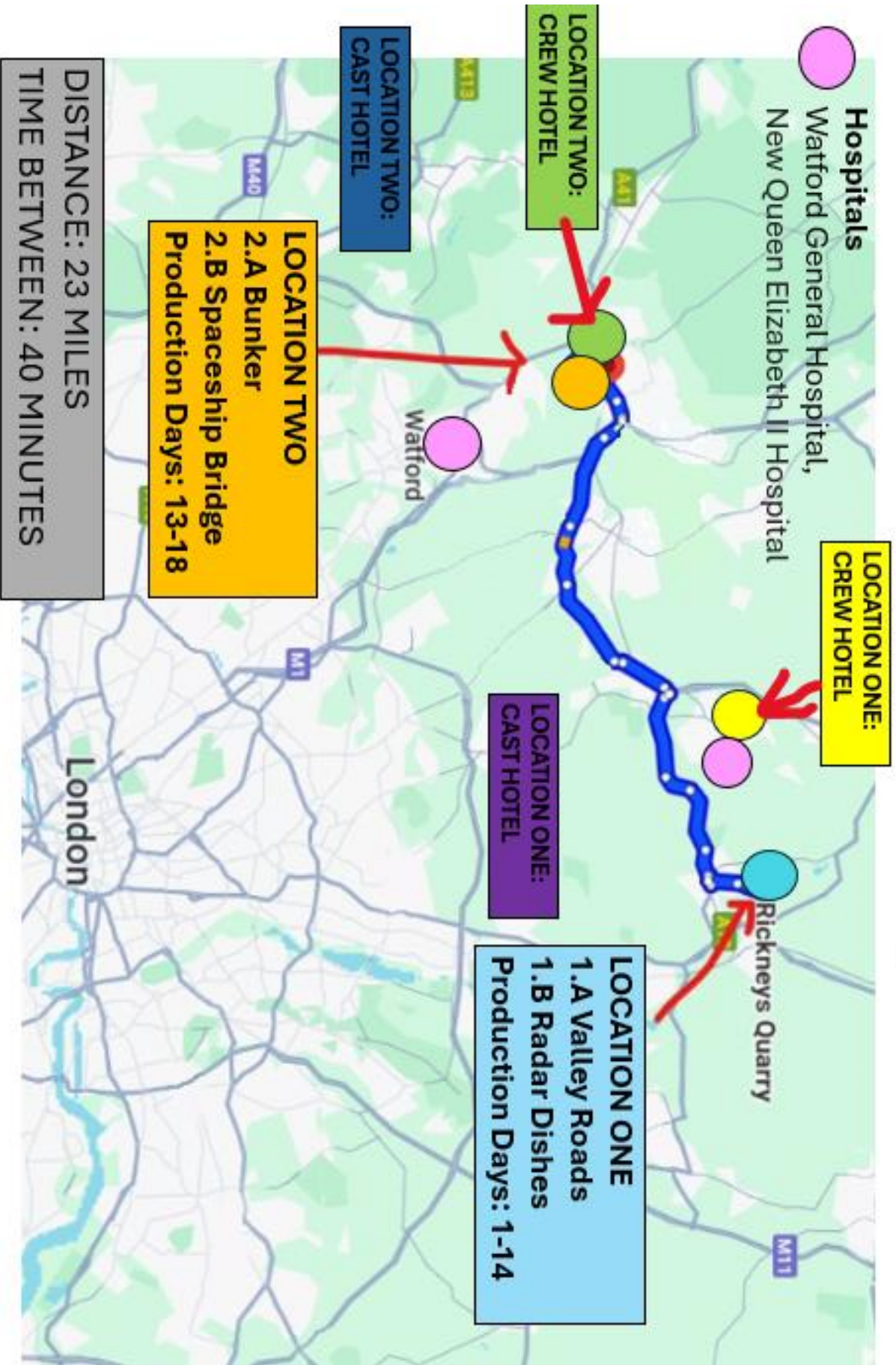
Overall Budget	3
Maps	4
Itinerary	5
Art Department Budget	13
Locations	14
Set Dressing	21
Set Piece	26
Props	27
CGI	28
Costume Hair and Makeup	31
Crew and Equipment Budget	32
Crew	33
Equipment	36
Logistics Budget	37
Accommodation	38
Catering	45
Travel	47
On Set Locations	51
Set Piece Plan	53
Legal Budget	56
Legal	57
Production Schedule	60
Shoot Schedule	65
Call Sheets	68

Overall Budget

£ 2 Million

Department	Amount	Percentage
Art Department	£650,000	32.5%
Crew	£300,000	15%
Equipment	£300,000	15%
Logistics	£400,000	20%
Legal	£150,000	7.5%
Contingency	£200,000	10%
Total	£2,000,000	100%

4



Production Overview

SCIFI SHORT FILM GAANT CHART

[illegible]

Itinerary

Production Days: 18

Days: 1-3

Day 01 Saturday Rickney's Quarry Set Up

Morning

- 0930: Crew arrives from travelling independently to set.
- 0930: Crew Breakfast and Debrief

Afternoon

- 1000: Crew begins set up and set dress.
- 1300: Lunch
- 1400: Resume Set Dressing
- 1500: Delivery of metal garage and construction

Evening

- 1700: Finish for Day
- 1730: Leave Location
- 1800: Arrive at Hotels
- 1900: Dinner

Day 02 Sunday. Rickney's Quarry Set Up

Morning

- 0730: Wake up.
- 0830 breakfast at hotel.
- 0900 crew transports to Rickney's Quarry,
- 0930: Crew Arrive on Set, and brief
- 1000: set dress, and arrival of set peice (Vehicle).

Afternoon

- 1300: lunch,
- 1400: resume set dress
- 17:00: finish

Evening

- 1730 : crew transport back to hotel.
- 1800: Crew arrive at hotel
- 1900: Dinner

Day 03 Monday Rickney's Quarry Shoot

Morning

- 0600: wake up.
- 0700: breakfast.
- 0730: pick up from hotel
- 0800: Arrival on Set, and briefing
- 0815: equipment set up, blocking with actors.

Afternoon

- 0900: first take.
- 1330: break for lunch.

Evening

- 1430: shooting.
- 1900: Finish and Pickup
- 1915: Crew and Cast Leave
- 1945: Back at hotels
- 2000: Dinner at hotel

Itinerary

Production Days: 18

Days: 4-6

Day 04 Tuesday Rickney's Quarry Shoot

- | | |
|------------------|---|
| Morning | <ul style="list-style-type: none">• 0600 Wake up.• 0700 breakfast. |
| Afternoon | <ul style="list-style-type: none">• 0730 hotel pick up• 0800 Arrive on set and brief• 0815 equipment set up, blocking with actors |
| Evening | <ul style="list-style-type: none">• 0900 first take.• 1230 lunch• 1400 shooting.• 1530 finish.• 1545 cast transport back to the hotel.• 1600 crew transport back to the hotel.• 18:00 dinner. |

Day 05 Wednesday Rickney's Quarry Set Up

- | | |
|------------------|--|
| Morning | <ul style="list-style-type: none">• 0600 wake up.• 0700 breakfast. |
| Afternoon | <ul style="list-style-type: none">• 0730 pick up• 0800 On set and brief• 0815 equipment set up, blocking with actors. |
| Evening | <ul style="list-style-type: none">• 0900 first take.• 1330, break for lunch.• 1430 shooting.• 17:30 finish• 17:45 cast transports back to the hotel.• 18:00 crew transports back to the hotel• 1830: Arrive back at hotel.• 19:00 dinner. |

Day 06 Thursday Rickney's Quarry Shoot

- | | |
|------------------|--|
| Morning | <ul style="list-style-type: none">• 0600 wake up.• 0700 breakfast. |
| Afternoon | <ul style="list-style-type: none">• 0730 pick up crew and cast• 0800 Arrive on set and brief• 0815 equipment set up, blocking with actors. |
| Evening | <ul style="list-style-type: none">• 0900 first take.• 1300, break for lunch.• 1400 shooting.• 1830 finish.• 1900 Crew and Cast transport back.• 1945 dinner at the hotel.• |

Itinerary

Production Days: 18

Days: 7

Day 07 Friday		Rickney's Quarry Shoot
Morning	<ul style="list-style-type: none">• 0600 wake up.• 0700 breakfast.• 0730 pick up, arrival on set by• 0800 arrive on set and brief• 0815 equipment set up, blocking with actors.• 0900 first take.• 1230 break for lunch.• 13:30 shooting• 19:00 finish.• 1930 cast and crew travel back to hotel• 2000 Back at hotels• 2015 dinner at hotels	
Afternoon		
Evening		
Day	Saturday	Day off
Day	Sunday	Day off

Itinerary

Production Days: 18

Days: 8-10

Day 08 Monday Rickney's Quarry Shoot

Morning

- 0600 wake up.
- 0700 breakfast.

Afternoon

- 0730 pick up,
- 0800 Arrive on set and brief.
- 0815 equipment set up, blocking with actors.
- 0900 first take.

Evening

- 1230 lunch.
- 1330 shooting.
- 1800 finish.
- 1830 cast and crew leave for hotels
- 1900 arrive back at hotels
- 1915 Dinner at hotels.

Day 09 Tuesday Rickney's Quarry Shoot

Morning

- 0600 wake up.
- 0700 breakfast.

Afternoon

- 0730 pick up
- 0800 arrive on set, and briefing
- 0815 equipment set up, blocking with actors.
- 0900 first take.

Evening

- 1300 lunch.
- 1400 shooting.
- 1900 finish.
- 1930 cast and crew leave for hotels
- 2000 arrive at hotels
- 2015 dinner

Day 10 Wednesday Rickney's Quarry shoot

Morning

- 0600 wake up.
- 0700 breakfast.

Afternoon

- 0730 pick up
- 0800 arrive on set, and briefing
- 0815 equipment set up, blocking with actors.
- 0900 first take.

Evening

- 1230 lunch.
- 1330 shooting.
- 1900 finish.
- 1930 cast and crew leave for hotels
- 2000 arrive at hotels
- 2015 dinner

Itinerary

Production Days: 18

Days: 11-13

Day 11 Thursday Rickney's Quarry Shoot

- | | |
|------------------|--|
| Morning | <ul style="list-style-type: none">• 0600 wake up.• 0700 breakfast. |
| Afternoon | <ul style="list-style-type: none">• 0730 pick up• 0800 arrive on set, and briefing• 0815 equipment set up, blocking with actors. |
| Evening | <ul style="list-style-type: none">• 0900 first take.• 1300 lunch.• 1400 shooting.• 1630 finish.• 1700 cast and crew leave for hotels• 1730 arrive at hotels• 1800 dinner |

Day 12 Friday Rickney's Quarry Shoot

- | | |
|------------------|---|
| Morning | <ul style="list-style-type: none">• 1900: Dinner• 1930 pick up |
| Afternoon | <ul style="list-style-type: none">• 2000 arrive and briefing• 2015 equipment set up, blocking for actors.• 2100 first take. |
| Evening | <ul style="list-style-type: none">• 0000 finish filming• 0000 second dinner• 0030 Packing Up• 0100 crew transports back to the hotel.• 0130 arrive at hotel |

*Set dressing Crew move over to second location

Day 13 Saturday Frogmore Papermill

- | | |
|------------------|--|
| Morning | <p>SET DRESSING PEOPLE</p> <ul style="list-style-type: none">• 0800 Wake Up |
| Afternoon | <ul style="list-style-type: none">• 0900 Breakfast at hotel• 0930 Hotel pickup to Frogmore Paper mill (location)• 0945 Arrival and briefing |
| Evening | <ul style="list-style-type: none">• 1000 Set dress• 1300 lunch• 1400 set dressing• 1700 finish• 1730 pick up to hotel• 1745 arrive at hotel• 1830 dinner |

Itinerary

Production Days: 18

Days: 14-16

Day 14 Sunday Frogmore Papermill Set Up	
Morning	SET DRESSING PEOPLE
	• 0800 Wake Up
	• 0900 Breakfast at hotel
Afternoon	• 0930 Hotel pickup to Frogmore Paper mill (location)
	• 0945 Arrival and briefing
	• 1000 Set dress
Evening	• 1300 lunch
	• 1400 set dressing
	• 1700 finish
	• 1730 pick up to hotel
	• 1745 arrive at hotel
	• 1830 dinner
	*Main Crew and Cast move over day (refer to travel spreadsheet)
Day 15 Monday Frogmore Papermill shoot day	
Morning	• 0615 wake up.
	• 0715 breakfast.
Afternoon	• 0745 pick up
	• 0800 arrival on set and debrief
	• 0815 equipment set up, blocking with acting.
Evening	• 0900 first take.
	• 1200 break for lunch.
	• 1300 shooting.
	• 1800 finish.
	• 1830 crew and cast back to hotel
	• 1845 arrive at hotels
	• 1900 dinner
Day 16 Tuesday Frogmore Papermill shoot day	
Morning	• 0615 Wake Up
	• 0715 Breakfast at hotel
	• 0745 Hotel pickup to Frogmore Paper mill (location)
Afternoon	• 0800 Arrival and briefing
	• 0815 Equipment set up and blocking
	• 0900 shooting
Evening	• 1300 lunch
	• 1400 shooting
	• 1930 finish
	• 2000 pick up to hotel
	• 2015 arrive at hotel
	• 2030 dinner

Itinerary

Production Days: 18

Days: 17-18

Production Days: 18

Day 17 Saturday Frogmore Papermill Pack Down

Morning

Afternoon

Evening

- SET DE-DRESSERS
- 0800 wake up
- 0900 breakfast
- 0930 pick up
- 0945 arrival and brief
- 1000 pack down.
- 1300 lunch.
- 1400pack down.
- 1700 finish and leave
- 1715arrival at hotel.
- 18300 dinner

*Cast and unnecessary crew check out of hotel at 11AM

Day 18 Sunday Frogmore Papermill Pack Down

Morning

Afternoon

Evening

- SET DE-DRESSERS
- 0800 wake up
- 0900 breakfast
- 0930 pick up
- 0945 arrival and brief
- 1000 pack down.
- 1300 lunch.
- 1400pack down.
- 1700 finish and leave
-

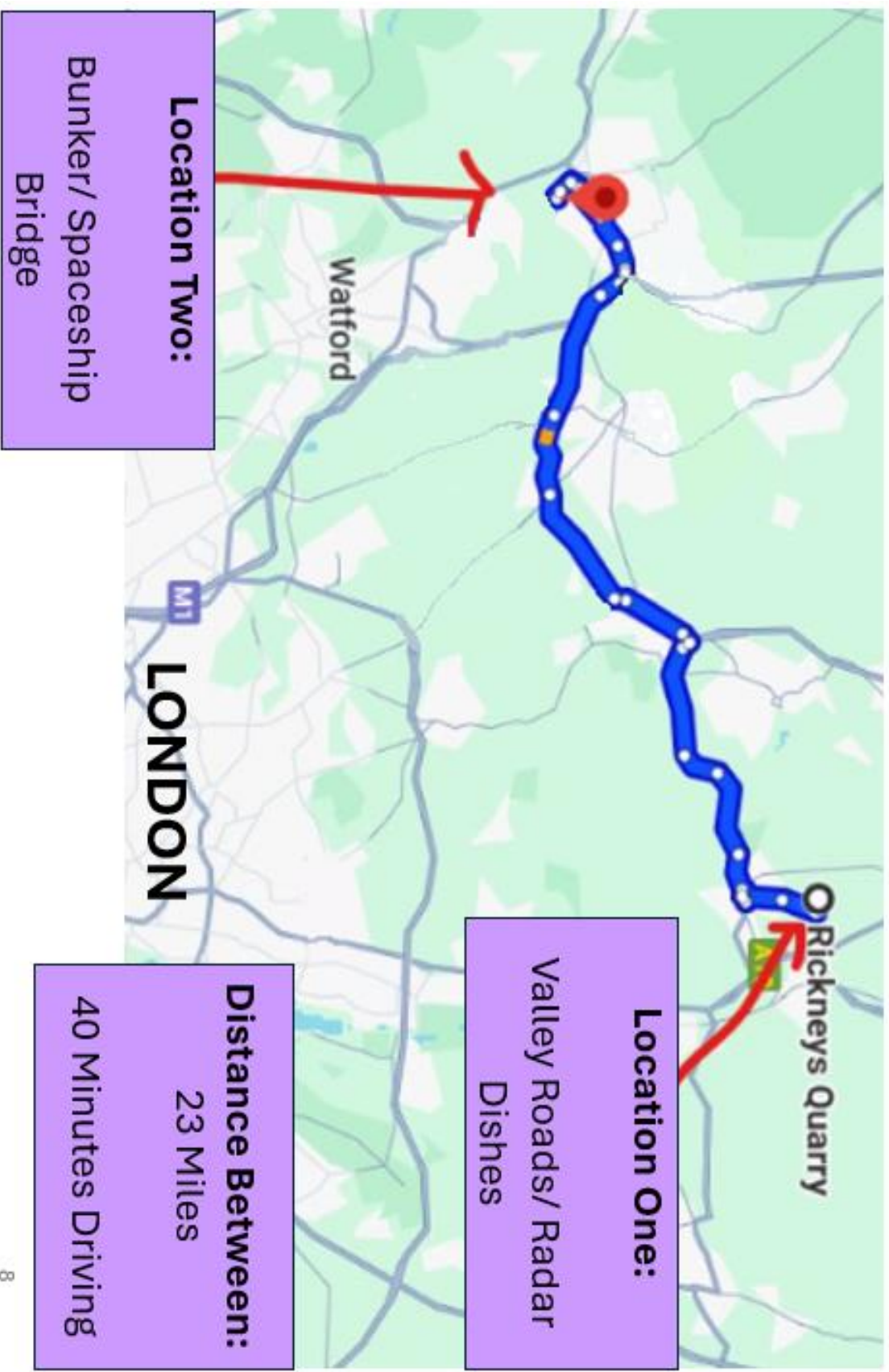
Art Department Budget

Overview

£650,000

Departments	Percentage	Cost
Location Hire (2 Locations)	15%	£100,000
Location 1.A: Valley Track	25%	£25,000
Location 1.B Radar Site	25%	£25,000
Location 2.A: Bunker	25%	£25,000
Location 2.B Spaceship Bridge	25%	£25,000
Set Dressing	31%	£200,000
Set Piece (Vehicle)	15%	£100,000
Props	17%	£120,000
Wardrobe	7%	£30,000
CGI	15%	£100,000

Locations



Location ONE (£50,000)

Valley and Radar Dishes

Location 1:

1.A The Valley,
1.B Radar Dishes,

Where: Rickney's
Quarry

Shoot Days: 1-10

**Production
Days:** 1-14



For the Valley
Wasteland



For the
Radar
dish site

Location TWO (£50,000)

Bunker and Anderson's Spaceship

Location 2:

2.A Bunker

2.B Anderson's Spaceship

Where: Frogmore Paper Mill

Shoot Days: 11-12
Production Days: 13-18

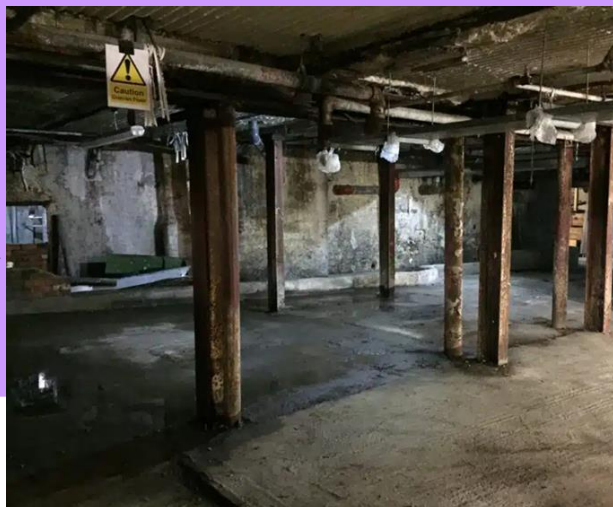
*Items will be cleared for set dressing



For the Bunker



For the
Spaceship
Bridge

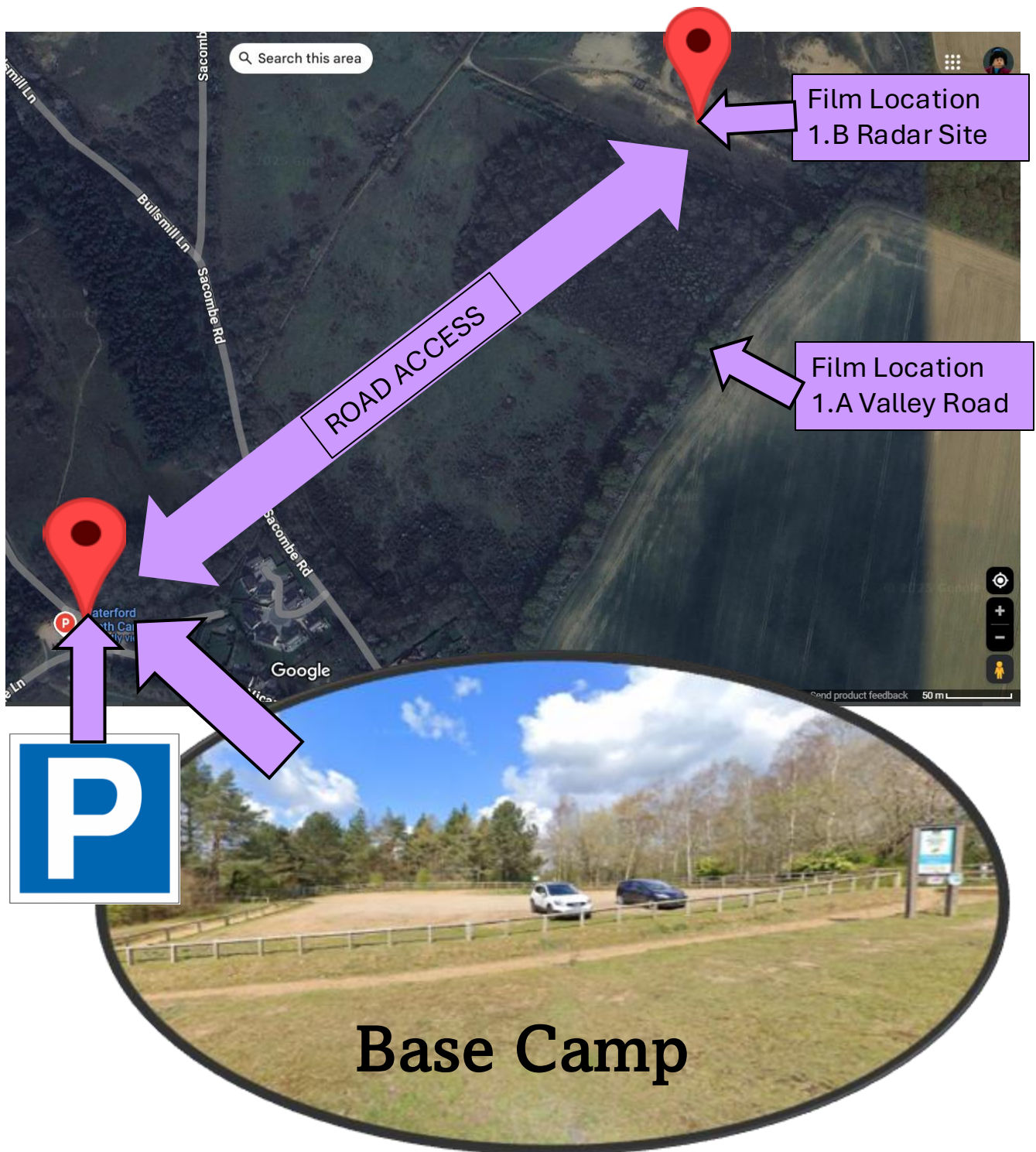


1.A Valley & 1.B Radar Dishes



- Rickney's Quarry
- In Hertford
- £50,000 for Location Hire

Rickney's Quarry: 1.A Valley Roads and 1.B Radar dishes



Reasoning for position of base camp:

- Will be able to see the base camp when filming at the location as it is quite open.
- Base camp is also flatter and allows for space for dining space and recreational space.

2.A Bunker & 2.B Spaceship Bridge



- Frogmore Paper Mill
- In Hemel Hempstead
- £50,000 for Location Hire

Frogmore PM: Bunker and Spaceship Bridge

Outside Frogmore PM (Meet Up Spot and Car Park) ↓



Outside Area for cast and crew when not needed ↓



Set Dressing- £200,000

Overview

Locations	Scenes	Percentage	Budget
Location 1. A Valley Roads	3-7	0%	£0
Location 1. B Radar Dishes	9-19, 21, 23, 25-39	40%	£80,000
Location 2. A Bunker	20, 22,24	40%	£80,000
Location 2. B Spaceship Bridge	21, 23, 25	20%	£40,000

Set Dressing- Location 1.A

Essential Set Dressing

Muddy, Wet ground

Sparce Vegetation and Rocks



Key Notes

Filming on location which is already sparce and a flat field meaning that not much set dressing will have to be done

Set Dressing- Location 1.B Radar dishes

£80,000

Essential Set Dressing

Hatch to bunker

Communications outpost

Littered with Debris

Spoil heap

Abandoned, Broken pieces

Key Notes

Set dressing and building the bottom half of the radars to CGI the rest.

Practical effects such as smoke and air from the opening of the hatch.

CGI

Set Building

Radar dish (without the damaged)



Set Dressing- Location 2.A Bunker

£80,000

Essential Set Dressing

Dark, Dingy, Cold

Abandoned, debris scattered

Screens/ Command controls

Small fires, emergency lights

Dead bodies littered around

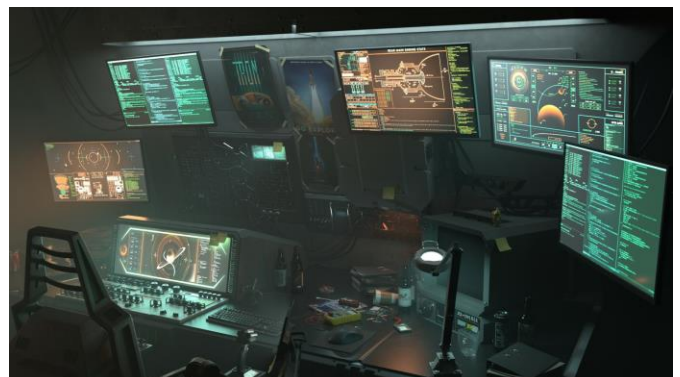
Main trip lever to turn everything on

Cabinets and cases where David gets the rations from

Key Notes

The Screens: will be CGI for the screens so can get old screens that do not work and will add CGI on them.

Concept for the screens



Set Dressing- Location 2.B Spaceship Bridge

£40,000

Essential Set Dressing

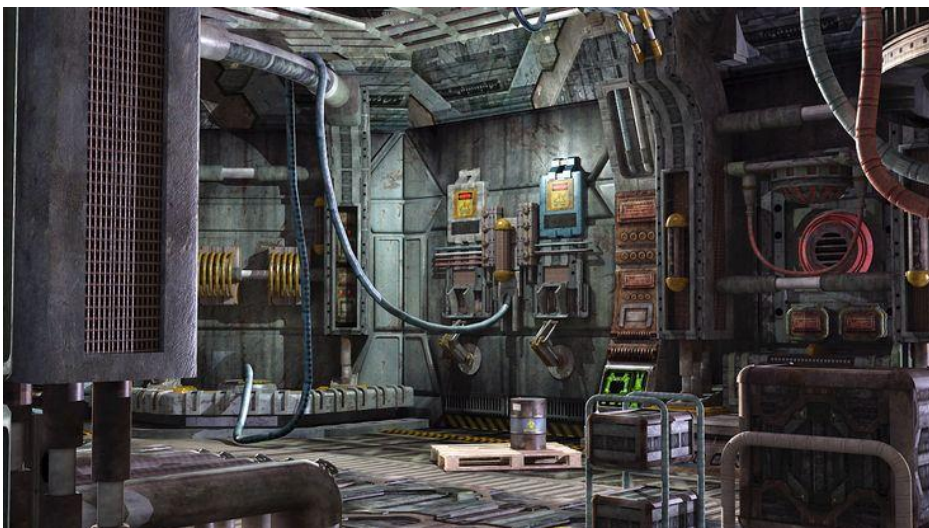
Window to space in the background

Broken and worn out starship bridge

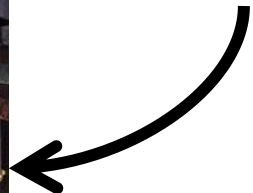
Key Notes

With the window to the stars, this will be green screened with CGI later added for the space effect.

Just set dressing one wall that Anderson will sit against to save time and budget.



Example



Set Piece (Vehicle)

£100,000

Concept



Set building on top of Flatbed

Production Days Needed

2- 12

WHERE: ONLY AT LOCATION 1.

Essential Set Details

Old, Run Down, damaged

Military style vehicle

Canopy at the back

Props- £120,000

Essential Props	Scenes Appeared	Locations
Sarah's Computer Device	04, 21,23	INT VEHICLE
Ben's Blanket	09, 36, 38	INT VEHICLE
Ben's Drawing	08	INT VEHICLE
David's Rifle	10, 22	EXT VEHICLE, BUNKER
Partly Burnt Human Remains	14	EXT RADAR DISHES
Glowing Crystal	17, 28	EXT RADAR DISHES
CONTROL DESK	20,22	INT BUNKER
RATIONS, BATTERIES AND EQUIPMENT	20,22	INT BUNKER
DAVID'S DEVICE	17, 22	RADAR DISHES, INT BUNKER
Smoke Grenades	30	EXT VEHICLE

CGI Plan- £100,000

Essential CGI	Scenes Appeared	Notes
Space Scene	1, 2	Full CGI
Valley Mountains and planets in sky	3, 5, 7	Mountains and Planets in the Sky
Radar dishes	9-19, 25-39	Radar Dishes along with smoke
Bunker	20, 22, 25	Screens, sparks
Anderson's star bridge	21, 23, 25	A window leading out to space
Phoenix EXT	28, 30, 35, 37, 39	The actual ship
Phoenix HUD	29, 33	HUD showing off drone shots of radar

Total Number of Shots CGI Needed: 68

PRICE PER SHOT: £1470.50

Example Pictures:



CGI Plan- £100,000

Scenes for CGI

1. DEEP SPACE - YES (1)
2. NEW EARTH- YES (1)
3. EXT VEHICLE (MOUNTAINS)- YES (3)
4. INT VEHICLE MOVING- NO
5. EXT VEHICLE (MOUNTAINS)- YES (1)
6. INT VEHICLE- yes SPARK, Shooting Star- (2)
7. Valley Road- flash in the distance- (1)
8. INT VEHICLE- NO
9. INT VEHICLE- LOOKING OUT THE WINDOW TO RADAR DISHES (1)
10. EXT VEHICLE- NO
11. INT VEHICLE- NO
12. EXT VEHICLE- YES (1)
13. RADAR DISHES- (3)
14. EXT VEHICLE - NO
15. RADAR DISHES -YES (1)
16. RADAR DISHES- YES (1)|
17. RADAR DISHES- NO
18. HATCHWELL- NO
19. INT VEHICLE- YES (1)
20. BUNKER- YES (5)
21. INT VEHICLE- NO
22. BUNKER- YES (15)
23. INT VEHICLE- (10)
24. HATCHWELL- NO
25. INT VEHICLE- NO
26. RADAR DISHES- YES (2)
27. INT VEHICLE- NO
28. EXT VEHICLE- YES (5)
29. PHOENIX HUD DISPLAY- YES (1)
30. EXT. VEHICLE- YES (1)
31. INT VEHICLE- NO
32. EXT VEHICLE- YES (3)
33. PHOENIX HUD DISPLAY- YES (1)
34. INT VEHICLE- YES (1)
35. EXT VEHICLE- YES (2)
36. VEHICLE- NO
37. PHOENIX FLOATING- YES (1)
38. INT VEHICLE- NO
39. EXT VEHICLE- YES (4)

CGI Plan- £100,000

Plan For CGI

Budget = price per shot x number of shots

$$100,000 = 1470.50 \times 68$$

Total Number of Shots: 68

Price Per Shot: £1470.50

1 Artist costs £50 per hour (£400 per day)

Budget/ price per hour= number of man hours available

$$100,000 / 50 = 2,000$$

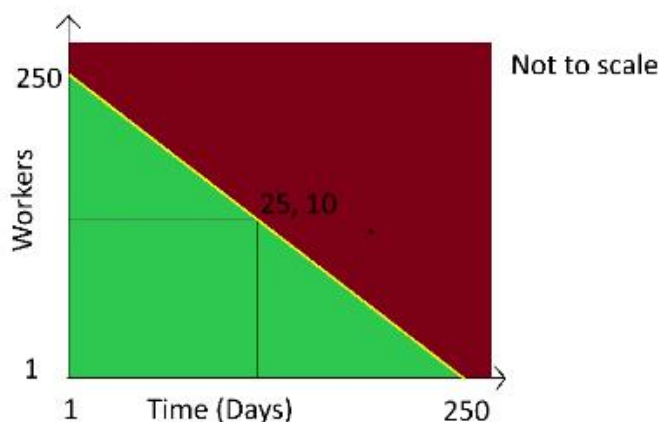
Man Hours Available/ working hours in a day= days

$$2,000 / 8 = 250$$

(MAX ALLOWED IN BUDGET)

10 workers, working for 25 days

68 shots in 25 days = 2.72shots per day



Red= Over Budget
Yellow= Budget Border
Green= Within Budget

Costume, Hair & Make-Up

£30,000

Costuming	Price Per Costume
David Outfit 1 (Undestroyed)	£500
David Outfit 2 (After fight)	£500
Sarah	£500
Ben	£500
Anderson	£100
Crewman (Burnt)	£300

Hair and Make-up	Daily Rate	Shoot Days Needed
Hair artist	£360	12
Make-up artist	£440	12
Touch up make-up artist	£198	12
SFX Artist	£500	1

Total Cost: £12,476

WHY

- Will need an SFX makeup artist for the badly damaged guy in the bunker and also to include battle damage to David after his fight
- Makeup artist is very important as David, Sarah and Ben must look like they have been on the road a long time.

Crew and Equipment Budget

Overview

£600,000

Departments	Percentage	Cost
Crew	50%	£300,000
Equipment	50%	£300,000

Crew

£300,000

Total crew number: 56

Typical shoot day crew number: 48

2	Production Days	1	2	3	4	5	6	7	8	9	10	11	12	13	14	15	16	17	18
3	Shoot days			1	2	3	4	5	6	7	8	9	10			11	12		
4	Days of the week	Sat	Sun	Mon	Tue	Wed	Thur	Fri	Mon	Tue	Wed	Thur	Fri	Sat	Sun	Mon	Tue	Wed	Thur
5	Times of shooting			7:30-19:00	7:30-15:30	7:30-18:30	8:00-18:30	7:30-19:00	7:30-18:00	7:30-19:00	8:00-18:00	19:00-1:30	20:00						
6	Location Set Decorator					Location One										Location two			
7																			
8	Producer																		
9	Director																		
10	Production Manager																		
11	Line Producer																		
12	Floor Runner																		
13	Floor Runner																		
14	Floor Runner																		
15	1st AD																		
16	DOP																		
17	Camera Operator																		
18	1st AC																		
19	Fixer																		
20	Lighting Technician																		
21	Best Boy																		
22	Gaffer																		
23	Rigger																		
24	Rigger																		
25	Logger																		
26	DIT																		
27	Grip																		
28	Senior Art Director																		
29	Senior Set Designer																		
30	Set Decorator																		
31	Location Set Decorator																		
32	Assistant Set Decorator																		
33	Prop Master																		
34	Hair Stylist																		
35	Makeup Artist																		
36	Touch Up Artist																		
37	On-Set Wardrobe Supervisor																		
38	Costume Designer																		
39	Script Editor																		
40	Production Sound Mixer																		
41	Boom Operator																		
42	1st AS																		
43	Focus Puller																		
44	Electrician																		
45	Stunt Coordinator																		
46	Security																		
47	Security																		
48	Security																		
49	Coach Driver																		
50	Location Manager																		
51	SFX Artist																		
52	Clapper Loader																		
53	Medic																		
54	Health and Safety Supervisor																		
55	Child Chauffeur																		
56	Production Runner																		
57	Production Assistant																		
58	Driver																		
59	Vehicle Transport Driver																		
60	Steadicam Operator																		
61	Vehicle Rig Operator																		
62	Drone Operator																		
63	Anderson																		
64	Ben																		
65	Crewman																		
66	David																		
67	Sarah																		

Crew Prices

Total per day: £20,000

Crew Member	Rate per day
Line Producer	£1500
Director of Photography	£2000
Production Manager	£1000
Camera Operator	£550
Production Sound Mixer	£550
Script Editor	£500
Gaffer	£500
Rigger	£500
Focus Puller	£450
First AD	£450
Lighting Technician	£450
Boom Operator	£400
First AC	£400
Production Assistant	£400
DIT	£380
Clapper Loader	£350
Logger	£350
Best Boy	£350
First AS	£350
Runner	£300
Fixer	£300

DOP



Paul Mackay | Director of Photography



'Home' - a short film
Directed by: Daniel Malloy
Produced by: Shpat Deda, Akolabi Kuti, Tim Nash, Scott O'Donnell, Chris Watlin

Paul Mackay Can be hired through the agency - Loop

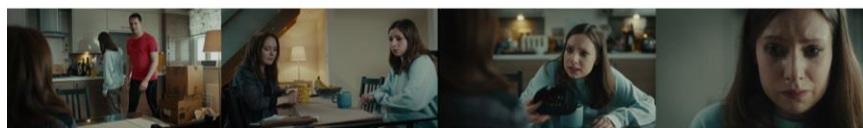
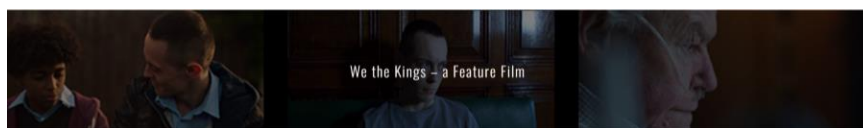
About

Education: BA (Hons) History

Skills: Apart from the obvious I'm good at collaborating and getting the most out of my team. I can operate geared heads, gimbals and I'm up to speed with new technologies. I'm also a deft hand at Asian cooking and have a pretty decent tennis game.

Inspiration: Steven Meizler (The Queen's Gambit, Minority Report) Colin Watkinson (The Handmaid's Tale), Guillermo Navarro (Pan's Labyrinth), Bruno Delbonnel (Amelie, Inside Llewyn Davis) Eduardo Serra (Girl With A Pearl Earring, Harry Potter and The Deathly Hallows)

Career High: Filming above the Serengeti in a hot air balloon. Seeing things not many people ever see. Other career highs include 'Home' winning a BAFTA for Best Short Film, and winning Best British Feature for my first film 'We The Kings' at Raindance.



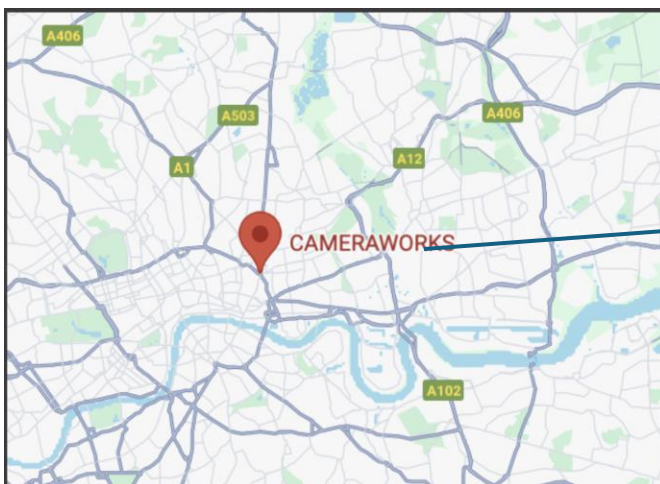
'We the Kings' - a feature film



Equipment

£300,000

Equipment	Percentage	Budget
Camera equipment - Includes camera, Tripod and any equipment a DOP would need - Arri Alexa 35	30%	£90,000 total Budget £4,500 Daily budget
Lighting and Grip equipment - Lights, Stands, C-stands, Flags, Clamps, sandboxes	25%	£75,000 Total budget £3,750 Daily budget
Sound Equipment	15%	£45,000 Total budget
Stabilization and movement equipment - Steadicam, Vehicle rig and Drone (Alta X)	25%	£75,000 Total budget £3,750 Daily budget
Generators	2%	£6000 total budget £500 daily budget
Media Storage	2%	£6000 total budget £500 daily budget
Contingency	1%	£3000 Total budget £250 Daily budget



Where we are
getting the
equipment from

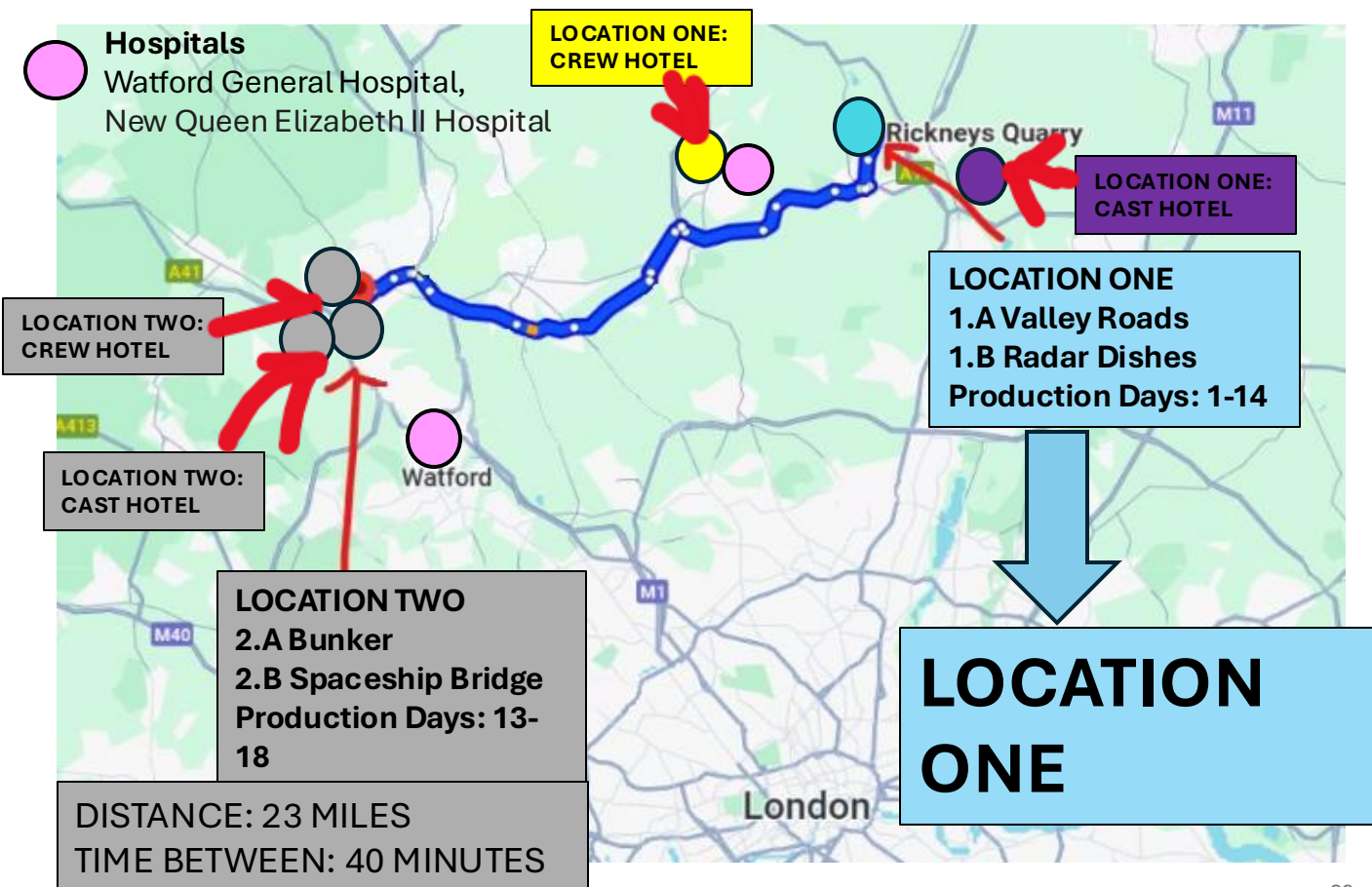
Logistics Budget

Overview

£400,000

Departments	Percentage	Cost
Accommodation	30%	£120,000
Catering	20%	£80,000
Travel	20%	£80,000
Crew Support	5%	£20,000
On set spaces	25%	£100,000

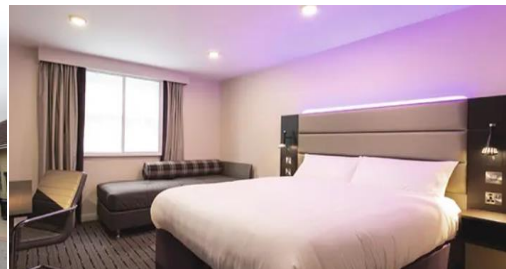
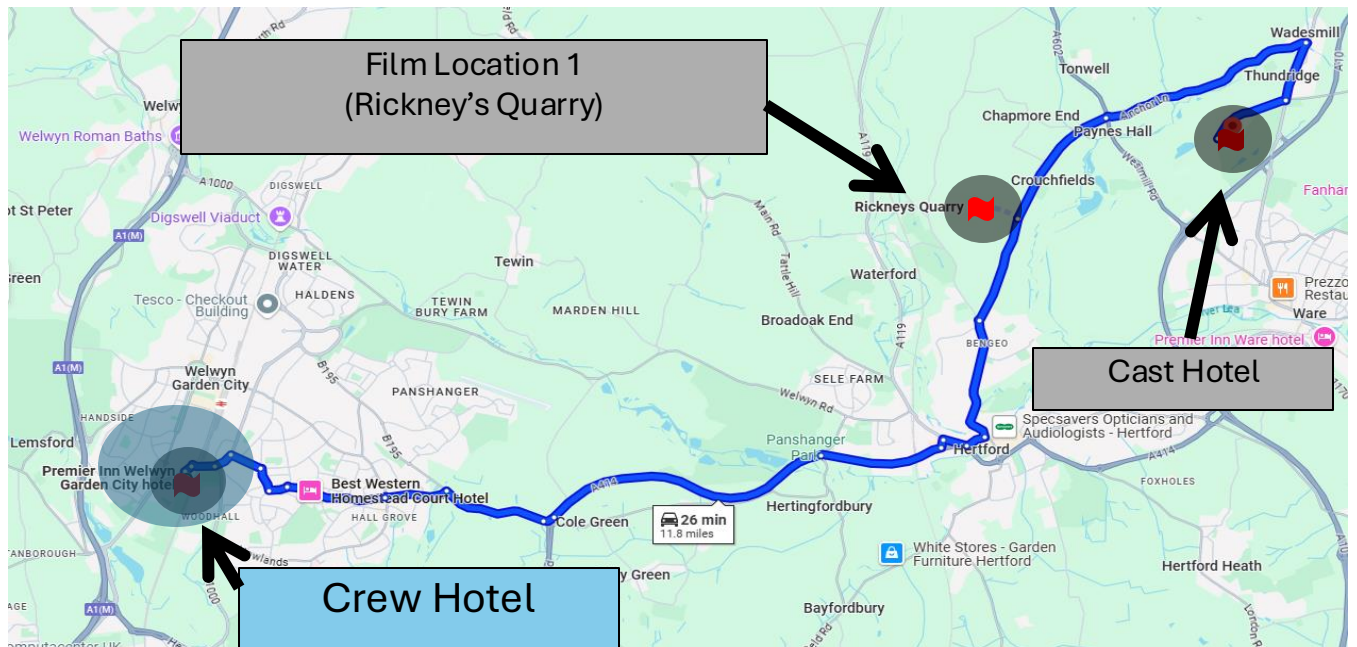
Accommodation Map



Accommodation

FOR LOCATION 1: RICKNEY'S QUARRY: CREW

Welwyn Garden City Premiere Inn

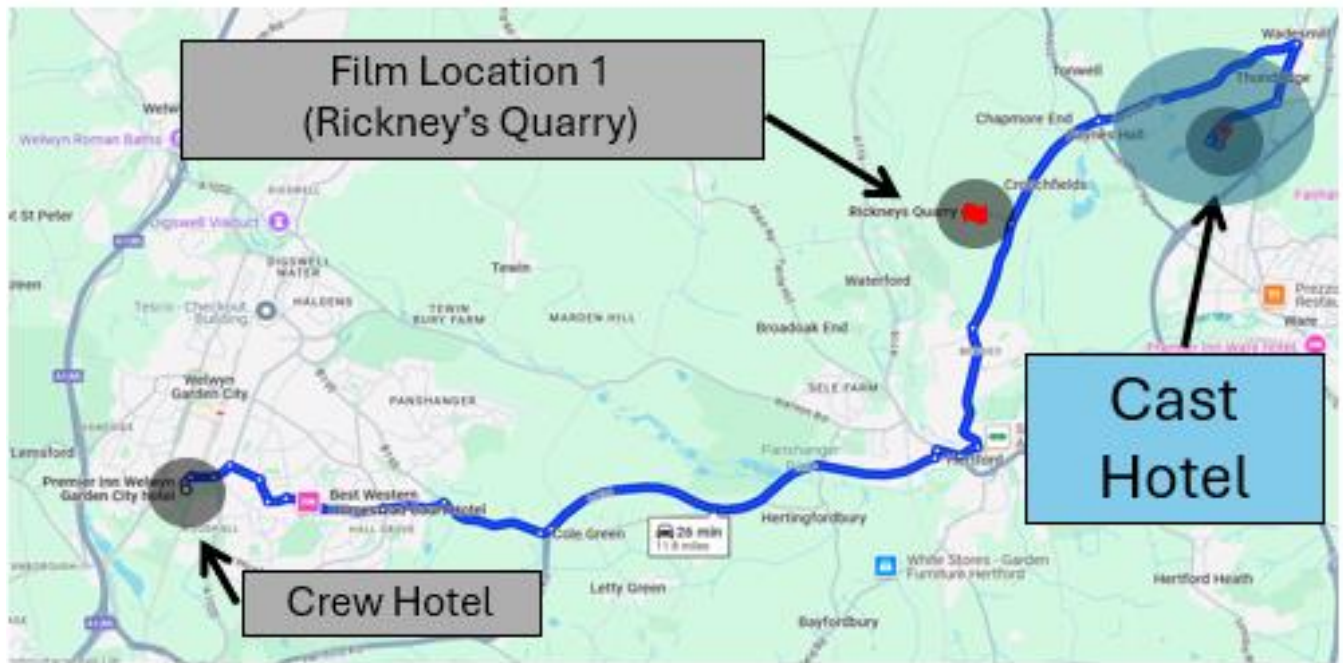


- 120 rooms
- £113 per room
- 12- 15 nights
- 20-minute journey to film site
- 53 crew overall
- Total= **£48,190**

Accommodation

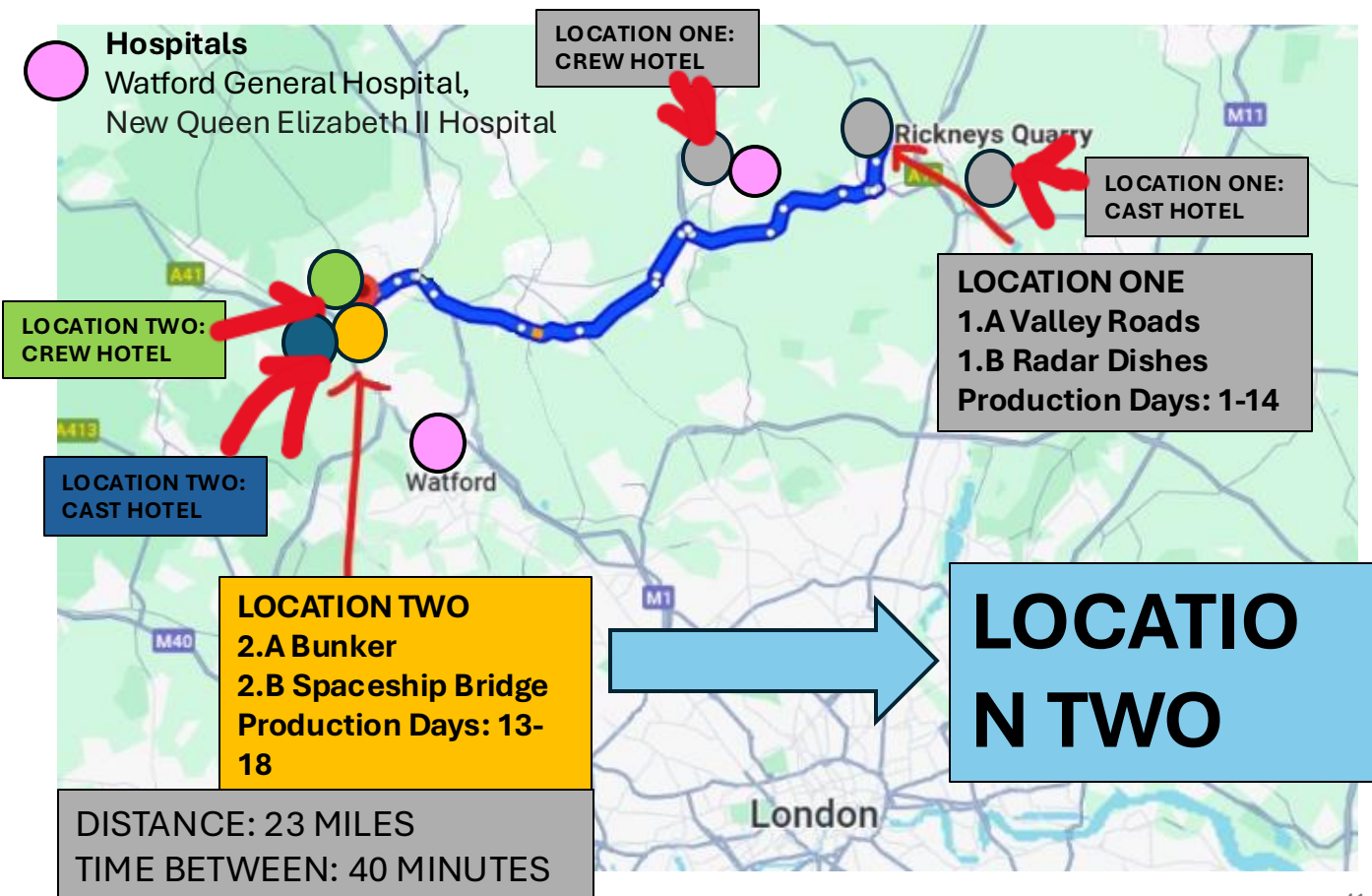
FOR LOCATION 1: RICKNEY'S QUARRY: CAST

Hanbury Manor Marriot Hotel and Country Club



- Cast hotel/ Child Chauffeur
- 10-minute journey to film site
- £160 per room
- 8- 14 nights
- Total: **£9,760**

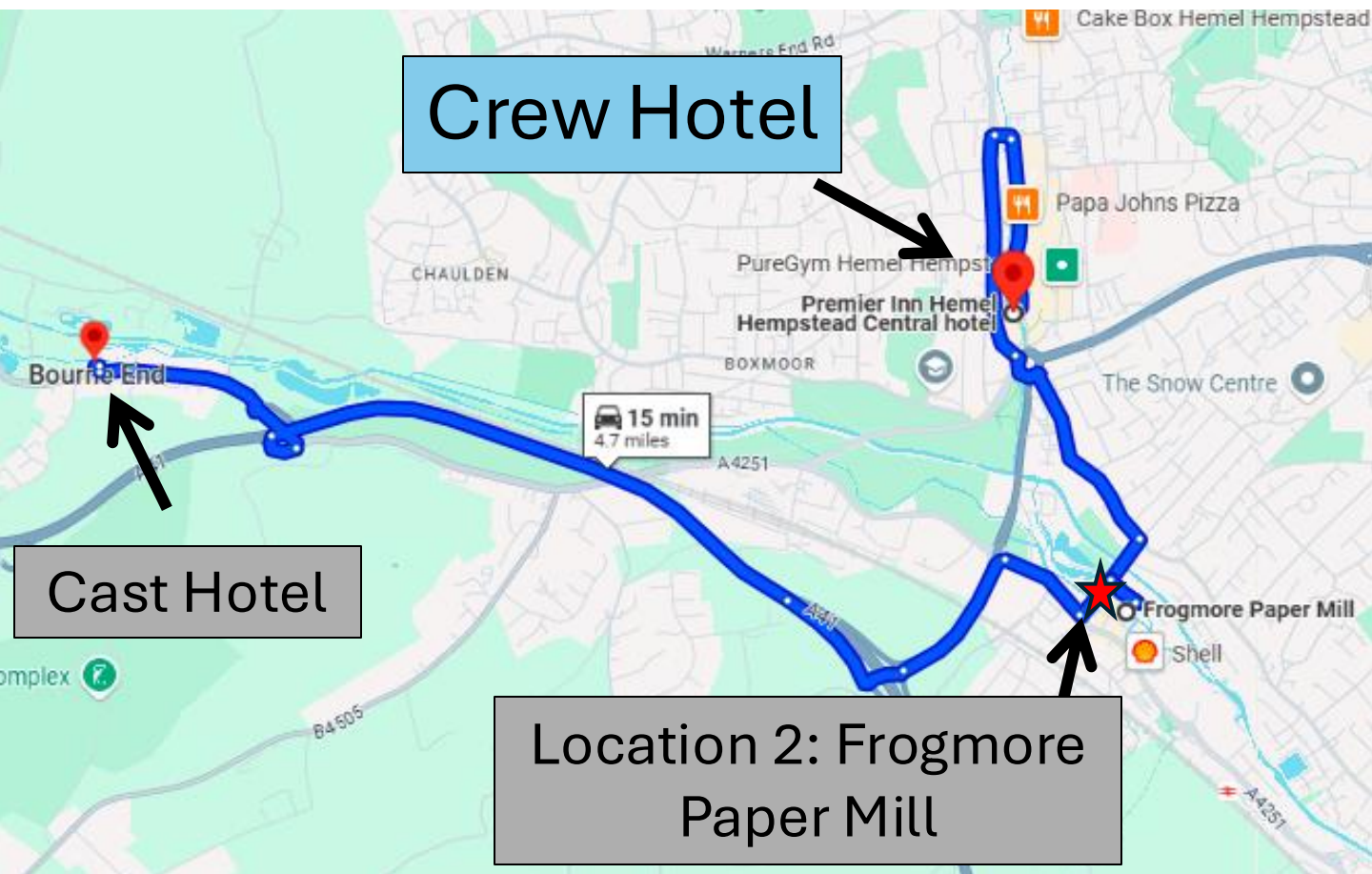
Accommodation Map



Accommodation

FOR LOCATION 2: FROGMORE PAPER MILL: CREW

Hemmel Hempstead Premiere Inn



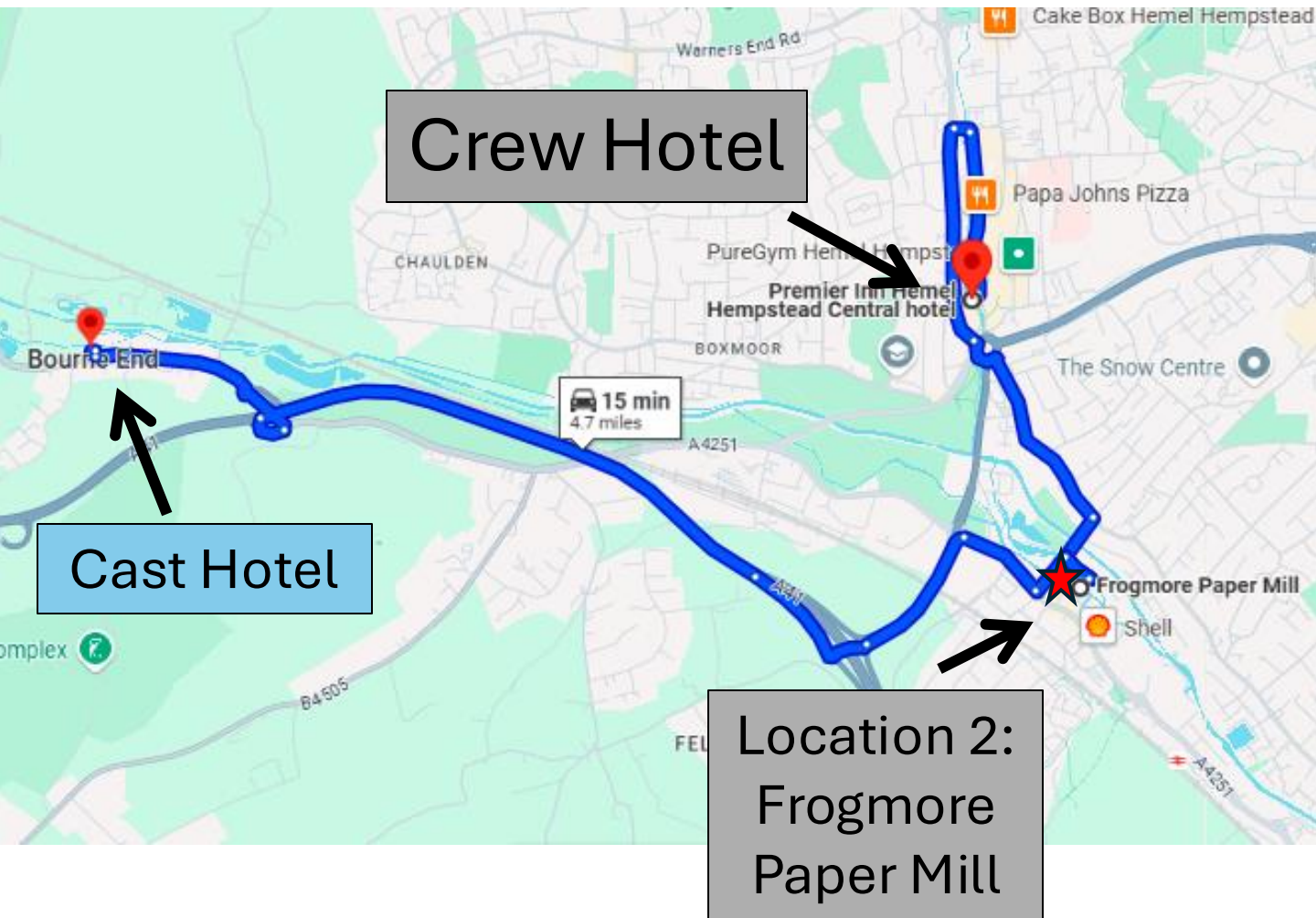
- 7-minute journey
- £94 per room
- 3-7 nights
- 54 people = **£20,022**



Accommodation

FOR LOCATION 2: FROGMORE PAPER MILL: CAST

The Watermill Hotel



- The Watermill Hotel, Hemmel Hempstead
- For location two, Frogmore Paper Mill
- 10 minute journey
- £118 per person, per night
- 1-3 nights
- Total- **£590**



Accommodation

Overview

Acommodation Spreadsheet																				
Production Days	1	2	3	4	5	6	7	8	9	10	11	12	13	14	15	16	17	18	19	20
Shoot days																				
Days of the week	Sat	Sun	Mon	Tue	Wed	Thur	Fri	Sat	Sun	Mon	Tue	Wed	Thur	Fri	Sat	Sun	Mon	Tue	Wed	Thur
Times of shooting			7:30-18:30	7:30-18:30	7:30-18:30	8:00-18:30	7:30-18:30			7:30-18:30	7:30-18:30	8:00-18:30	18:00-5:30		20:00					
Location	Location one- Rickneys Quarry										Location two- Industrial paper mill									
Producer																				
Director																				
Production Manager																				
Line Producer																				
Runner																				
Runner																				
Runner																				
1st AD																				
DOP																				
Camera Operator																				
1st AC																				
Fixer																				
Lighting Technician																				
Best Boy																				
Gaffer																				
Rigger																				
Rigger																				
Logger																				
DIT																				
Grip																				
Senior Art Director																				
Senior Set Designer																				
Set Decorator																				
Location Set Decorator																				
Assistant Set Decorator																				
Prop Master																				
Hair Stylist																				
Makeup Artist																				
Touch Up Artist																				
On-Set Wardrobe Supervisor																				
Costume Designer																				
Script Editor																				
Production Sound Mixer																				
Boom Operator																				
1st AS																				
Focus Puller																				
Electrician																				
Electrician																				
Security																				
Security																				
Security																				
Coach Driver																				
Location Manager																				
SFX Artist																				
Clapper Loader																				
Medic																				
Health and Safety Supervisor																				
Child Chauffeur																				
Script Editor																				
Production Assistant																				
Driver																				
Vehicle Transport Driver																				
Steadicam Operator																				
Vehicle Rig Operator																				
Drone Operator																				
Anderson																				
Ban																				
Crewman																				
David																				
Sarah																				
PRICE PER DAY	£2,373	£8,581.50	£8,016.50	£5,903.50	£5,003.50	£6,093.50	£6,093.50	£6,093.50	£6,093.50	£6,093.50	£6,093.50	£6,206.50	£6,206.50	£6,203.50	£5,385	£4,818	£4,748	£4,936	£1,316	£1,222

	Hanbury Manor Marriot
	Welwyn Premier Inn
	The Watermill Hotel
	Hemmel Hempstead Premier Inn

Total accommodation cost: £105,132.50

Catering

- Using a specific film catering company to provide food on set.
- Provide one meal on set (Lunch or dinner dependant on call time)
- Budget allocated to cover cast and crews other meal expenses
- £15-20 per person per meal – Gluten free/ vegan options
- Breakfast at the hotel- £10.99 per person
- 61 people: 56 crew + 5 cast members
- 12 shooting days, 20 days total (weekends, set building and pack down days included)
- Total cost = £38,243.67

Catering Spreadsheet																					
Production Days	1	2	3	4	5	6	7	8	9	10	11	12	13	14	15	16	17	18	19	20	
Shoot days			1	2	3	4	5			6	7	8	9	10	Main Crew	Build Crew	Main Crew	Build Crew	11	12	
Days of the week	Sat	Sun	Mon	Tue	Wed	Thur	Fri	Sat	Sun	Mon	Tue	Wed	Thur	Fri	Sat	Sat	Sun	Sun	Mon	Tue	Wed
Times of shooting	9:00-20:00	9:00-20:00	9:00-20:00	9:00-15:30	7:30-18:30	9:00-19:30	8:30-20:00	N/A	N/A	9:00-19:00	9:00-20:00	9:30-19:00	9:00-14:30	20:00-0:00		9:00-20:00		9:00-20:00	9:00-18:00	9:00-20:30	9:00-20:00
Location	Location one- Rickneys Quarry														Location two- Industrial paper mill						
Number of Crew	21	56	52	51	51	52	52	52	52	52	52	53	53	52	34	18	33	18	50	52	14
Breakfast	7:15	7:15	7:15	7:15	6:30	7:15	6:45			7:15	7:15	7:30	7:15	9:00		7:15		7:15	7:15	7:15	7:15
Lunch	15:00	15:00	13:30	12:00	12:30	13:00	12:00			12:30	13:00	12:30	13:00	14:00		15:00		15:00	12:30	12:00	15:00
Dinner	AOT	AOT	AOT	AOT	AOT	AOT	AOT			AOT	AOT	AOT	AOT	6:30		AOT		AOT	AOT	AOT	AOT

	At hotel
	On set
	Independant (Paid)
AOT	At own time



Catering



Proposal for Meal Provision

We are delighted to present our meal provision proposal, offering a range of delicious dishes, flexible dietary options, and convenient delivery. Below are three distinct package options, each priced per person for either lunch or dinner.

1. Three-Compartment Tray – £10 per person

What's Included:

- Three freshly prepared meal components (e.g., main dish, side, and vegetable)
- Disposable cutlery (fully recyclable)
- Delivered hot and ready to serve
- Ideal for a straightforward, satisfying meal

2. Three-Compartment Tray with Extras – £13 per person

What's Included:

- The same three components as above
- A bottle of water, choice of fruit **or** a bag of crisps, and a dessert
- Disposable cutlery (fully recyclable)
- Delivered hot and ready to serve

3. Five-Compartment Tray – £15 per person

What's Included:

- Five different items, providing a more extensive meal with extra sides and/or salad options
- Disposable cutlery (fully recyclable)
- Delivered hot and ready to serve
- Perfect for those wanting more variety and larger portions

Daily Menu (Lunch or Dinner)

Below is our 10-day rotating menu. Each day features a new combination of flavours and cuisines:

1. **Day 1:** Italian-Style Chicken, Roasted Potatoes, Cauliflower Cheese
2. **Day 2:** Thai Green Curry, Sweet and Sour Vegetables, White Rice
3. **Day 3:** Railway Lamb Curry, Green Lentils, Plain Rice
4. **Day 4:** Spanish-Spiced Chicken with Olives, Five-Bean Stew, Sweet Potato
5. **Day 5:** Aloo Keema, Pilau Rice, Dal (Yellow Lentil Curry)

Travel

Overview-

- Coach travel to and from set for crew
- Car travel with driver and mini-van driver for cast to and from their own hotel, will use the mini-vans for the smaller crew days also and for carrying equipment
- Minibus Travel for days with smaller crew
- Van company to be employed for moving sets to locations.

Travel For Sets (per van load)		
	Frogmore	Rickneys
Pinewood studios	78.84	116.68
Rickneys Quarry	86.1	
Frogmore Paper Mill		

Estimated Cost Of Set Travel

Coach travel	£16,500
Car/ Mini-Bus Travel	£3,597.40
Moving Vans	£4,788
Petrol	£500
Vehicle Storage	£220.92
Overall cost	£25,606.32

Travel- Vehicles

- Vehicles will be used in various ways during production
- 2 drivers will go to collect the Puller Van and the Prop Van from the London area and we will store them for two weeks in the Bridge Lane Garage
- A van will be employed to collect the equipment the day before shoot day 1
- 2 vans will be employed to transport set pieces from London to location, from location 1 to location 2 and then will be used to dispose of them sustainably after production

Travel Spreadsheet																			
Production Days	14	15	16	17	18	19	20	21	22	23	24	25	26	27	28	29	30	31	1
Shoot days																			
Days of the week	Sat	Sun	Mon	Tue	Wed	Thur	Fri	Sat	Sun	Mon	Tue	Wed	Thur	Fri	Sat	Sun	Mon	Tue	Wed
Times of shooting			8:00-18:00	8:00-18:00	8:00-18:00	8:00-18:00	8:00-18:00			8:00-18:00	8:00-18:00	8:00-18:00	8:00-18:00	8:00-18:00			8:00-18:00	8:00-18:00	8:00-18:00
Location	London Area			Location one- Winerys premier inn/ Hanbury Manor -> Rickneys Quarry										Location two- Hemel Premier inn/ Vintomill -> Industrial paper mill					
Pick up time- Crew	Pick up Puller Truck and Prop Truck	N/A	9:00	7:30	7:30	7:30	7:30	N/A	N/A	7:30	7:30	7:30	7:30	19:30	8:00	9:30	N/A	9:30	7:45
Arrive on set- Crew		N/A	9:30	8:00	8:00	8:00	8:00	N/A	N/A	8:30	8:00	8:00	8:00	20:00	8:40	9:45	N/A	9:45	8:00
Leave at the hotel- Crew	Store in Bridge Lane Garage	17:30	17:30	19:15	18:00	18:00	19:00	19:30	N/A	N/A	18:30	19:30	17:00	17:00	1:00	20:00	17:30	13:00	17:30
Pick up time- Cast		N/A	N/A	7:40	7:40	7:40	7:40	N/A	N/A	7:40	7:40	7:40	7:40	N/A	N/A	N/A	N/A	N/A	7:45
Arrive on set- Cast		N/A	N/A	8:00	8:00	8:00	8:00	N/A	N/A	8:00	8:00	8:00	8:00	N/A	N/A	N/A	N/A	N/A	8:00
Pick up back to hotel- Cast		N/A	N/A	19:10	19:45	17:45	18:40	19:10	N/A	N/A	18:10	19:10	19:15	18:45	N/A	N/A	N/A	13:00	19:10
Arrive at the hotel- Cast		N/A	N/A	19:20	19:00	18:00	18:50	19:20	N/A	N/A	18:20	19:20	19:30	17:00	N/A	N/A	N/A	13:50	18:25
Coach																			
Car																			
Mini-Van																			
Puller Truck																			
Prop Truck																			
Harropport Vans x2																			
Prop mover van x2																			
Equipment mover van																			

	Coach
	Car
	Mini-van
	Puller Truck
	Prop Truck
	Prop mover van
	Equipment Van

Travel- Cast and Crew

Travel Spreadsheet																						
Production Days	1	2	3	4	5	6	7	8	9	10	11	12	13	14	15	16	17	18	19	20		
Shoot days																						
Days of the week	Sat	Sun	Mon	Tue	Wed	Thur	Fri	Sat	Sun	Mon	Tue	Wed	Thur	Fri	Sat	Sun	Mon	Tue	Wed	Thur		
Times of shooting			9:00-20:00	9:00-15:30	9:00-18:30	9:00-19:30	8:30-20:00			8:00-19:00	9:00-20:00	9:30-19:00	9:00-14:30	20:00-8:00	8:00-20:00	Building Crew	Main Crew	Building crew	9:00-18:00	9:00-20:30	9:00-20:00	9:00-20:00
Location			Location one- Welwyn premier inn/ Hanbury Manor -> Rickneys Quarry										Main crew	Building Crew	Location two- Hemel Premier Inn/ Watemill -> Industrial paper mill							
Pick up time- Crew	8:30	9:00	7:30	7:30	7:30	7:30	7:30	N/A	N/A	7:30	7:30	7:30	7:30	19:30	8:00	8:40	N/A	9:30	7:45	7:40	9:30	9:30
Arrive on set- Crew	8:50	9:30	8:00	8:00	8:00	8:00	8:00	N/A	N/A	8:00	8:00	8:00	8:00	20:00	8:40	8:50	N/A	9:45	8:00	8:00	9:45	9:45
Pick-up back to hotel- Crew	17:30	17:30	19:15	16:00	18:00	19:00	19:30	N/A	N/A	18:30	19:30	17:00	17:00	1:00	20:00	20:30	13:00	17:30	18:30	20:00	17:05	17:00
Arrive at the hotel- Crew	18:00	18:00	19:45	16:30	18:30	19:30	20:30	N/A	N/A	19:00	20:00	17:30	17:30	1:30	20:10	20:40	13:40	17:45	18:45	20:15	17:20	17:15
Pick up time- Cast	N/A	N/A	7:40	7:40	7:40	7:40	7:40	N/A	N/A	7:40	7:40	7:40	7:40	N/A	N/A	N/A	N/A	N/A	7:45	7:45	N/A	N/A
Arrive on set- Cast	N/A	N/A	8:00	8:00	8:00	8:00	8:00	N/A	N/A	8:00	8:00	8:00	8:00	N/A	N/A	N/A	N/A	N/A	8:00	8:00	N/A	N/A
Pick-up back to hotel- Cast	N/A	N/A	19:10	15:45	17:45	18:40	19:10	N/A	N/A	18:10	19:10	16:45	16:45	N/A	N/A	N/A	13:00	N/A	18:10	19:40	N/A	N/A
Arrive at the hotel- Cast	N/A	N/A	19:20	16:00	18:00	18:50	19:20	N/A	N/A	18:20	19:20	17:00	17:00	N/A	N/A	N/A	13:50	N/A	18:25	19:55	N/A	N/A
Producer																						
Director																						
Production Manager																						
Line Producer																						
Runner																						
Runner																						
Runner																						
1st AD																						
DOP																						
Camera Operator																						
1st AC																						
Fixer																						
Lighting Technician																						
Best Boy																						
Gaffer																						
Rigger																						
Rigger																						
Logger																						
DIT																						
Grip																						
Senior Art Director																						
Senior Set Designer																						
Set Decorator																						
Location Set Decorator																						
Assistant Set Decorator																						
Prop Master																						
Hair Stylist																						
Makeup Artist																						
Touch Up Artist																						
On-Set Wardrobe Supervisor																						
Costume Designer																						
Script Editor																						
Production Sound Mixer																						
Boom Operator																						
1st AS																						
Focus Puller																						
Electrician																						
Electrician																						
Security																						
Security																						
Security																						
Coach Driver																						
Location Manager																						
SFX Artist																						
Clapper Loader																						
Medic																						
Health and Safety Supervisor																						
Child Chauffeur																						
Script Editor																						
Production Assistant																						
Driver																						
Vehicle Transport Driver																						
Steadicam Operator																						
Vehicle Rig Operator																						
Drone Operator																						
Handy man																						
Handy man																						
Anderson																						
Ben																						
Crewman																						
David																						
Sarah																						
PRICE PER DAY	2,373	6,628.50	6,063.50	5,950.50	5,950.50	6,140.50	6,140.50	6,140.50	6,140.50	6,140.50	6,140.50	6,253.50	6,253.50	4,558.50	1692	5,385	4,912	4,842	4,936	1,316	1,222	

	Hanbury Manor Marriot
	Welwyn Premier Inn
	The Watemill Hotel
	Hemmel Hempstead Premier Inn
	Coach
	Mini-bus
	Car

Travel- Location 1 On Set



Base Camp

- Three drivers
- Use the mini-van and two vans to move cast and crew from base camp to set



On Site Locations



Plan for Crew and Cast

Whilst temporarily not shooting, the crew will be able to take refuge under a storm-proof tent. The tent will be constructed and deconstructed by the on set handy men who will put up the car support

Plan for Equipment

Equipment to be stored on set in a storage container
Delivered on set and removed from set from the shipping container business

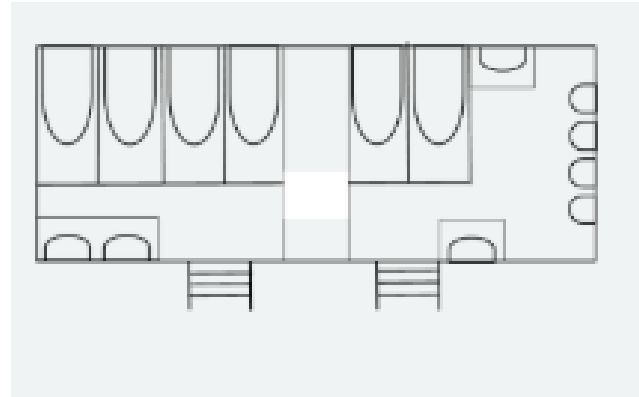
£5000 each



On Site Locations

Honey Wagons (Toilets)

- Luxury Mixed Pod
- Sherwood Hire
- 4 ladies' toilets
- 2 men's toilets and 4 urinals



Plan for Toilets

Set up Production Day 2 at Location 1

On set at Location 1 until production day

On Production day 13, the honey wagon will be towed to location 2 with a hired out tow truck for the day

On Location 2 for production days 13-18

Set Piece Plan (Vehicle)

Stage in Plan	Notes
Obtaining the Set Piece	<ul style="list-style-type: none"> - Purchasing a van ahead of time and in the local area - Average price £5,000 - Held at bridge lane car park, London
Set Building	Building on top of the flatback truck, making it look more military-like.
On Set	<ul style="list-style-type: none"> - Being used as the vehicle on the driving scenes and stationary scenes. - While on set, can be driven though not road safe
After Set	<ul style="list-style-type: none"> - Transport truck can be sold for the same price that it was brought for. - Set piece can be

Set Piece Plan (Vehicle)

Transport

- Using a truck to move around the set piece
- £3,000 for the truck
- Will employ a driver for the truck
- Fuel money will come out of budget



Storage

While on set at Location 1, both the moving truck and set piece need to be stored.

Cost per one: £1,499

Getting 2 for the set piece and the moving truck.

Gets delivered on set but needs building. (2 handymen on set)



Security Plan



Night security	Daily Rate	Overall budget
Secure FM – Standard overnight security.	£13.88 3 Security guards for 16 nights.	£7,994.88

Legal Budget

Overview

£150,000

Departments	Percentage	Cost
Insurance	46%	£70,000
Risk Assessments	14%	£20,000
Child Services	7%	£10,000
Other	33%	£50,000

Risk Assessments

SCRIPT	RISK
Dad DAVID is driving.	There is a law against acting and driving in the UK. The vehicle will need to be road worthy and pulled by a truck that is driven by another.
A SPARK flashes out	Sparks are hard to control and dangerous, better for post-production.
She throws the box behind her	She would need to throw it when Ben (child actor) is not in the back, to avoid hurting him.
dirt track	Trip hazard for crew and unsafe for equipment. Place down plywood to avoid this.
The large military-type vehicle - fully loaded	Making sure all elements are attached, using ropes/bungee cords/zip ties.
David pulls a rifle off the side of the truck	Using an unloaded firearm, fake prop needed.
David pulls a rifle off the side of the truck	Making sure the rest of the items attached stay intact
checking that the ropes holding down the tarpaulins are secure	Actor should be careful not to loosen them.
under the radar dishes.	Set design must be sturdy and secure to the ground as radar dishes are large in size.
BEN disappears behind the spoil heap	He still needs to be in view of a chauffeur and safeguarding officer on set.
The site is littered with debris.	Tripping hazards all over the floor of the set. Make sure cast and crew are safely moving about and aware of hazards.
He lifts some debris in search.	Have a selected piece of set that is safe to be handled without protective clothing.
The Truck horn BLASTS	To be done in post, or if on set, make sure crew and cast are aware and given warning.
David opens the hatch.	Making sure the hatch is made safely to be handled without protective clothing or isn't too heavy for the actor to strain themselves.
David lowers himself down into the "well", the hatch closing behind him.	Safety specialist to oversee this, 'working from heights'.
David lowers himself down into the "well", the hatch closing behind him.	Crash matt at the bottom of the "well".
all dark	Rehearse in the light and make sure the actor knows where to move. Using dim lighting so there is no chance of full darkness.

Risk Assessments

Cont.

SCRIPT	RISK
Small fires	In a confined room, there must be ventilation and extinguishers. Either done in post or on set supervised by a pyrotechnics specialist and safety specialist.
Ben [...] keeps his hands on the wheel.	Engine needs to be turned off.
SUDDENLY a hand grabs his arm	Rehearsed with both actors.
He takes a swing knocking David over. The crewman attacks him only to be pushed back to floor [...] races back towards him [...] The crewman races towards David [...] The crewman tumbles	Rehearsed with both actors. Stunt coordinator needed for rehearsals and shooting. Stunt insurance needed and trip hazards on location eliminated.
David races up the ladder being chased.	Stunt coordination from a specialist and a crash matt needed for 'working at heights'.
Sarah [...] races back to the radar site.	Trip hazards must be eliminated and rehearsals done for the route she must run in.
David slams the hatch door shut.	All actors need to be out of the way to avoid injury. Soft edges to the hatch and sound effects added in post.
Ben is [...] floating 1 metre above the ground.	Attached by a harness and a crash matt beneath him. Both removed in post-production.
A piercing screeching noise is heard	Must be done in post to avoid harming the hearing of cast and crew.
It dives and spirals sharply towards the ground before levelling out and heading towards them.	Must be done in post as it is too dangerous to build and plummet on set.

Legal

Insurance - Public liability Equipment Work High risk activities	3% of overall budget	£60,000
Child Safeguarding Officer		£4,320
Safety Specialist		£2,880
Operational Authorisation of flying a drone		£253
	Total:	£67,453

Health and safety Costs Breakdown

	Quantity	Price
Crash mats -	X3	£90
Oak wood Planks – For the dirt track, in case of wet weather.	X4	£55.96
10mm Rope – Backup for holding vehicle modifications on.	X2	£18.98
100 Zip ties – backup for holding vehicle modifications on.	X1	£4.99
Rubber edge trim – To put around the rim of the hatch door.	X2	£10.50
	Total:	£180.43

Total Overall: **£67,633.43**

Production Schedule

Normal working day schedule

- 0600: Get up
- 0700: Breakfast
- 0730: Pick-up
- 0800: On set
- 0800: Briefing,
- 0815: Set-Up
- 0900: First Take.
- 1200: Lunch (lasts one hour)
- 1900: Average end of Day
- 2000: Back at Hotel

[illegible]

[illegible]

Shooting Schedule

SHT ODR	Sc	DAY	INT/EXT	LOCATION	DAY/NIGHT	8THs	Pg	SHOOT DATE	SHOOT TIME	MINs	DAVID	SARAH	BEN	ANDERSON	RADIO	BROADCAST CREWMAN	NOTES
1	14	2	EXT	RADAR DISHES	DAY	8/8th	7	8-Jul	9:00								
2	13	2	EXT	RADAR DISHES	Day	1/8th	8	8-Jul	11:00		X	X					
3	15	2	EXT	RADAR DISHES	DAY	1/8TH	8	8-Jul	11:45								
		2		LUNCH (PROVIDED)				8-Jul	12:00								
4	16	2	EXT	RADAR DISHES	DAY	1/8TH	8	8-Jul	14:00		X	X					
				FINISH					15:30								
Day 3																	
		3		BREAKFAST (AT HOTEL)					7:00								
1	17	3	EXT	RADAR DISHES	DAY	8/8TH	8,9	9-Jul	9:00		X	X					
		3		LUNCH (PROVIDED)					12:00								
2	17	3	EXT	RADAR DISHES	DAY	8/8TH	10,11	9-Jul	14:30		X	X					
				FINISH					17:30								
Day 4																	
		4		BREAKFAST (AT HOTEL)					7:00								
1	19	4	INT	VEHICLE	DAY	1/8TH	11	10-Jul`	9:00								
2	21	4	INT	RADER DISHES/WASTELAND	DAY	6/8th	12	10-Jul`	10:00		X	X	X				
		4		LUNCH (PROVIDED)				10-Jul`	12:00								
3	21	4	INT	VEHICLE	DAY	8/8TH	13	10-Jul`	14:00		X	X	X				
				FINISH					18:30								
Day 5																	
		5		BREAKFAST (AT HOTEL)				11-Jul	7:00								
1	23	5	INT	VEHICLE	DAY	11/8TH	16,17	11-Jul	9:00		X	X	X				
		5		LUNCH(PROVIDED)				11-Jul	12:30								
2	23	5	INT	VEHICLE	DAY	15/8TH	18,19	11-Jul	13:30		X	X	X				
				FINISH					19:00								
Day 6																	
		6		BREAKFAST (AT HOTEL)				14-Jul	7:00								
1	28	6	EXT	RADAR DISHES/WASTELAND	DAY	10/8th	21,22	14-Jul	9:00		X	X	X				
		6		LUNCH (PROVIDED)				14-Jul	12:30								
2	26	6	EXT	RADAR DISHES/WASTELAND	DAY	3/8th	20	14-Jul	13:30		X	X					
3	25	6	INT	RADAR DISHES/WASTELAND	DAY	1/8th	20	14-Jul	15:30		X	X	X				
4	27	6	INT	VEHICLE	DAY	1/8th	20	14-Jul	16:30		X	X	X				
				FINISH					18:00								
Day 7																	
		7		BREAKFAST (AT HOTEL)				15-Jul	7:00								
1	30	7	EXT	WASTELAND	DAY	1/8TH	22	15-Jul	9:00		X	X					
2	32	7	EXT	WASTELAND	DAY	1/8TH	22	15-Jul	10:00								
3	35	7	EXT	WASTELAND	DAY	1/8TH	23	15-Jul	11:15								
		7		LUNCH(PROVIDED)		1/8TH		15-Jul	13:00								
4	36	7	INT/EXT	WASTELAND	DAY	1/8TH	23	15-Jul	14:00		X	X	X				
5	31	7	INT	VEHICLE	DAY	1/8TH	22	15-Jul	15:00		x	x	x				
6	29	7	INT	PHOENIX	DAY	1/8TH	22	15-Jul	16:00								
7	33	7	INT	PHOENIX	DAY	1/8TH	22	15-Jul	17:30								
8	37		EXT	PHOENIX	DAY	1?8TH	23	15-Jul	18:00								
				FINISH					19:00								
Day 8																	
		8		BREAKFAST (AT HOTEL)				16-Jul	7:00								
1	39	8	EXT	VEHICLE/WASTELAND	DAY	4/8TH	24	16-Jul	9:30		X	X	X				
		8		LUNCH (PROVIDED)				16-Jul	12:30								
2	34	8	INT	VEHICLE	DAY	1/8TH	23	16-Jul	13:30		X	X	X				
3	38	8	INT	VEHICLE	DAY	1/8TH	23	16-Jul	15:00		X	X	X				
4	4	8	INT	VEHICLE	NIGHT	2/8TH	2	16-Jul	16:00								
				FINISH					19:00		X	X	X		X		

SHT	ODR	Sc	DAY	INT/EXT	LOCATION	DAY/NIGHT	8THs	Pg	SHOOT DATE	SHOOT TIME	MINs	DAVID	SARAH	BEN	ANDERSON	RADIO	BROADCAST CREWMAN	NOTES
Day 9																		
		6			BREAKFAST (AT HOTEL)				17-Jul	7:00			X	X	X			
1	6	9	INT		VEHICLE	DAY	12/8TH	3,4	17-Jul	9:00								
		8	9		LUNCH(PROVIDED)				17-Jul	13:00			X	X	X			
2	8	9			VEHICLE	DAY	2/8TH	4,5	17-Jul	14:00								
		9			FINISH				17-Jul	16:30								
Day 10																		
		10			DINNER				18-Jul	19:00								
1	3	10	EXT		VALLY TRACK/ROAD	NIGHT	1/8TH	2	18-Jul	21:00								
2	5	10	EXT		VALLY TRACK/ROAD	NIGHT	2/8TH	2	18-Jul	22:00						X		
2	7	10	EXT		VALLY ROAD/ROAD	NIGHT	1/8th	4	18-Jul	23:00								
		10			FINISH				18-Jul	0:00								
		10			DINNER X2				18-Jul	0:00								
Day 11																		
		11			BREAKFAST (AT HOTEL)				21-Jul	7:15								
1	18	11	INT		HATCH WELL	DAY	1/8TH	11	21-Jul	9:00		X						
2	24	11	INT		HATCH WELL	DAY	1/8th	19	21-Jul	10:15		X						
					LUNCH(PROVIDED)				21-Jul	12:00								
3	20	11	INT		BUNKER CONTROL ROOM	DAY	4/8TH	11,12	21-Jul	13:00								
		11			FINISH				21-Jul	17:00								
Day 12																		
		12			BREAKFAST (AT HOTEL)				22-Jul	7:15								
1	22	12	INT		BUNKER CONTROL ROOM	DAY	8/8TH	14	22-Jul	9:00		X					X	
		12			LUNCH(PROVIDED)				22-Jul	13:00						X		
2	22	12	INT		BUNKER CONTROL ROOM	DAY	12/8TH	15,16	22-Jul	14:00		X					X	
		12			FINISH					19:30								

Shooting Schedule with health and safety

SHT						DAY/ NIGH					DAVID	SARAH	BEN	ANDERSON	RADIO	BROADCAST	CREWMAN	Fire	Legal	Electrical	Falling Objects	Audio Hazard	Ergonomical	Low Light	Trip Hazard
ODR	Sc	DAY	EXT	LOCATION	T	8THs	Pg	SHOOT DATE	TIME																
Day 1																									
		1		BREAKFAST (AT HOTEL)					07:15										X		X				X
1	10	1	EXT	VALLY ROAD/TRACK	DAY	2/8TH	6	07-Jul	09:00	X	X									X				X	
2	12	1	EXT	VALLY TRACK/ROAD	Day	3/8TH	6&7	07-Jul	11:00	X	X														
				LUCH (PROVIDED)					13:30	X	X														
3	9	1	INT	VEHICLE	DAY	7/8th	5&6	07-Jul	14:30									X		X					
4	11	1	INT	VEHICLE	Day	1/8TH	6	07-Jul	15:30	X	X	X						X		X					
				FINISH					19:00																
Day 2																									
		2		BREAKFAST (AT HOTEL)					07:15																
1	14	2	EXT	RADAR DISHES	DAY	8/8th	7	08-Jul	09:00									X		X		X		X	
2	13	2	EXT	RADAR DISHES	Day	1/8th	8	08-Jul	11:00		X	X								X	X	X	X	X	
3	15	2	EXT	RADAR DISHES	DAY	1/8TH	8	08-Jul	11:45											X	X	X	X	X	
		2		LUCH (PROVIDED)				08-Jul	12:30																
4	16	2	EXT	RADAR DISHES	DAY	1/8TH	8	08-Jul	14:00		X	X								X		X		X	
				FINISH					15:30																
Day 3																									
		3		BREAKFAST (AT HOTEL)					06:00																
1	17	3	EXT	RADAR DISHES	DAY	8/8TH	8,9	09-Jul	07:30	X	X							X		X		X	X	X	
		3		LUNCH (PROVIDED)					12:30																
2	17	3	EXT	RADAR DISHES	DAY	8/8TH	10,11	09-Jul	13:30	X	X									X	X	X		X	
				FINISH					18:30																
Day 4																									
		4		BREAKFAST (AT HOTEL)					07:15																
1	19	4	INT	VEHICLE	DAY	1/8TH	11	10-Jul`	09:00									X		X					
2	21	4	INT	RADER DISHES/WASTELAND	DAY	6/8th	12	10-Jul`	10:00		X	X	X							X		X		X	
		4		LUNCH (PROVIDED)				10-Jul`	13:00																
3	21	4	INT	VEHICLE	DAY	8/8TH	13	10-Jul`	14:00		X	X	X					X		X					
Day 5																									
		5		BREAKFAST (AT HOTEL)				11-Jul	06:15																
1	23	5	INT	VEHICLE	DAY	11/8TH	16,17	11-Jul	08:30		X	X	X					X		X	X	X		X	
		5		LUNCH(PROVIDED)				11-Jul	12:30																
2	23	5	INT	VEHICLE	DAY	15/8TH	18,19	11-Jul	13:30		X	X	X					X		X					
				FINISH					19:00																
Day 6																									
		6		BREAKFAST (AT HOTEL)				14-Jul	07:15																
1	28	6	EXT	RADAR DISHES/WASTELAND	DAY	10/8th	21,22	14-Jul	09:00	X	X	X								X		X		X	
		6		LUNCH(PROVIDED)				14_Jul	12:30																
2	26	6	EXT	RADAR DISHES/WASTELAND	DAY	3/8th	20	14-Jul	13:30	X	X									X		X		X	
3	25	6	INT	RADAR DISHES/WASTELAND	DAY	1/8th	20	14-Jul	15:30	X	X	X								X		X		X	
4	27	6	INT	VEHICLE	DAY	1/8th	20	14-Jul	16:30	X	X	X						X		X					
				FINISH					18:00																
Day 7																									
		7		BREAKFAST (AT HOTEL)				15-Jul	07:15																
1	30	7	EXT	WASTELAND	DAY	1/8TH	22	15-Jul	09:00	X	X											X		X	
2	32	7	EXT	WASTELAND	DAY	1/8TH	22	15-Jul	10:00													X		X	
3	35	7	EXT	WASTELAND	DAY	1/8TH	23	15-Jul	11:15													X		X	
		7		LUNCH(PROVIDED)		1/8TH		15-Jul	13:00																
4	36	7	INT/E	WASTELAND	DAY	1/8TH	23	15-Jul	14:00	X	X	X										X		X	
5	31	7	INT	VEHICLE	DAY	1/8TH	22	15-Jul	15:00	x	x	x						X		X					
6	29	7	INT	PHOENIX	DAY	1/8TH	22	15-Jul	16:00													X			
7	33	7	INT	PHOENIX	DAY	1/8TH	22	15-Jul	17:30													X			
8	37		EXT	PHOENIX	DAY	1?8TH	23	15-Jul	18:00													X			
				FINISH					19:00																
Day 8																									
		8		BREAKFAST (AT HOTEL)				16-Jul	07:30																
1	39	8	EXT	VEHICLE/WASTELAND	DAY	4/8TH	24	16-Jul	09:30	X	X	X						X		X		X		X	
		8		LUNCH(PROVIDED)				16-Jul	12:30																
2	34	8	INT	VEHICLE	DAY	1/8TH	23	16-Jul	13:30	X	X	X						X		X					
3	38	8	INT	VEHICLE	DAY	1/8TH	23	16-Jul	15:00	X	X	X						X		X					
4	4	8	INT	VEHICLE	NIGH	2/8TH	2	16-Jul	16:00									X		X					
				FINISH					18:00	X	X	X			X										

SHT ODR	Sc	DAY	INT/ EXT	LOCATION	DAY/ NIGHT	8THs	Pg	SHOOT DATE	SHOOT TIME	DAVID	SARAH	BEN	ANDERSON	RADIO	BROADCAST	CREWMAN	Fire	Legal	Electrical	Falling Objects	Audio Hazard	Ergonomical	Low Light	Trip Hazard
Day 9																								
1																								
	6			BREAKFAST (AT HOTEL)				17-Jul	07:15	X	X	X												
1	6	9	INT	VEHICLE	DAY	12/8TH	3,4	17-Jul	09:00			X	X					X		X				
	8	9		LUNCH(PROVIDED)				17-Jul	13:00	X	X	X												
2	8	9		VEHICLE	DAY	2/8TH	4,5	17-Jul	14:00									X		X				
		9		FINISH				17-Jul	16:30															
Day 10																								
		10		DINNER				18-Jul	20:00															
1	3	10	EXT	VALLY TRACK/ROAD	NIGHT	1/8TH	2	18-Jul	21:00									X		X		X		
2	5	10	EXT	VALLY TRACK/ROAD	NIGHT	2/8TH	2	18-Jul	22:00					X				X		X		X		
2	7	10	EXT	VALLY ROAD/ROAD	NIGHT	1/8th	4	18-Jul	23:00									X		X		X		
		10		FINISH				18-Jul	00:00															
Day 10																								
		10		DINNER				18-Jul	20:00															
1	3	10	EXT	VALLY TRACK/ROAD	NIGHT	1/8TH	2	18-Jul	21:00									X		X		X		
2	5	10	EXT	VALLY TRACK/ROAD	NIGHT	2/8TH	2	18-Jul	22:00					X				X		X		X		
2	7	10	EXT	VALLY ROAD/ROAD	NIGHT	1/8th	4	18-Jul	23:00									X		X		X		
		10		FINISH				18-Jul	00:00															
Day 11																								
		11		BREAKFAST (AT HOTEL)				21-Jul	07:15															
1	18	11	INT	HATCH WELL	DAY	1/8TH	11	21-Jul	09:00	X										X		X	X	X
2	24	11	INT	HATCH WELL	DAY	1/8th	19	21-Jul	10:15	X										X		X	X	X
				LUNCH(PROVIDED				21-Jul	12:30															
3	20	11	INT	BUNKER CONTROL ROOM	DAY	4/8TH	11,12	21-Jul	13:00								X			X		X	X	X
		11		FINISH				21-Jul	18:00															
Day 12																								
		12		BREAKFAST (AT HOTEL)				22-Jul	07:15															
1	22	12	INT	BUNKER CONTROL ROOM	DAY	8/8TH	14	22-Jul	09:00	X					X		X			X		X	X	X
		12		LUNCH(PROVIDED				22-Jul	12:00					X										
2	22	12	INT	BUNKER CONTROL ROOM	DAY	12/8TH	15,16	22-Jul	13:00	X					X		X			X		X	X	X
		12		FINISH				22-Jul	19:30															

Call Sheets

Set up Rickney's Quarry set	Sci-Fi	DATE: Saturday
WEATHER: First Aid kit and fire extinguisher at the craft table.	CALL TIME 09:30 Check grid for individual call times	LUNCH 13:00

Crew Hotel	Nearest Hospital to Set
Stanborough Road, Welwyn Garden City, AL8 6DQ	Hertford County Hospital, North Road, Hertford, SG14 1LP

LOCATIONS				
#	Location	Address	Parking	Contact
1	Rickney's Quarry	Hertford SG12 0HD	Crouchfields Car Park SG12 0PS	Name: - C: ###

Transportation	
Drive self to location and park in the car park	
Catering	
Cast/Crew Breakfast x 25 to be hot and ready @ 7:30	
Catering	
Cast/Crew Lunch x 25 to be Hot & Ready @ 13:30	

SET REQUIREMENTS
Set Dressing: vehicle, radar dishes

DEPT	NAME	IN	DEPT	NAME	IN
PRODUCTION			ART DEPT		
Production Manager	-	09:30	Senior Art Director	-	09:30
Production Assistant	-	09:30	Senior Set Designer	-	09:30
Location Manager	-	09:30	Set Decorator	-	09:30
Production Runner	-	09:30	Location Set Decorator	-	09:30
GRIP & ELECTRIC DEPT			Assistant Set Decorator	-	09:30
Lighting Technician	-	09:30	Prop Master	-	09:30
Fixer	-	09:30	HAIR/MAKEUP/WARDROBE		
Rigger	-	09:30	Costume Designer	-	09:30
Rigger	-	09:30	LOGISTICS		
Handyman	-	09:30	Security	-	09:30
Handyman	-	09:30	Security	-	09:30
Handyman	-	09:30	Security	-	09:30
Electrician	-	09:30	Medic	-	09:30
			Health & Safety Supervisor	-	09:30

Producer: - Director: - Production Manager: - Production Coordinator: - 1 st Assistant Director: -	<h1>Sci-Fi</h1>	DATE: Monday July SHUTTLE INFO: HOTEL PICK UP 07:00
WEATHER: First Aid kit and fire extinguisher at the craft table.	<h2>CALL TIME</h2> <h1>08:00</h1> Check grid for individual call times	<h2>LUNCH</h2> <h1>13:30</h1>

Crew Hotel	Nearest Hospital to Set
Premiere Inn Welwyn Garden City, Stanborough Road, Welwyn Garden City, AL8 6DQ	Hertford County Hospital, North Road, Hertford, SG14 1LP

LOCATIONS					
#	Location	Address	Parking	Contact	
1	Rickney's Quarry	Hertford SG12 0HD	Crouchfields Car Park SG12 0PS	Name: - C: # # #	
Scene and Description			Cast	Pgs	Loc
Scene 10			David & Sarah	6	Valley Road
Scene 12			David & Sarah	6&7	Valley Road
Scene 11			David & Sarsh	6	Vehicle
Scene 9			David, Sarah, & Ben	5&6	Vehicle

#	Cast	Role	Call Time	Pick Up Time	MU/WD	Set Call
1.	-	David	8:00	7:00	8:15	9:00
2.	-	Sarah	8:00	7:00	8:15	9:00
3.	-	Ben	13:30	12:00	14:00	14:30

Transportation
Coach pick up from hotel for and cast 7:00, Car pick up from hotel for David and Sarah 7:00, car pick up from hotel for Ben 12:00
Catering
Cast/Crew Lunch x 60 to be Hot & Ready @ 13:30

SET REQUIREMENTS
Props: Car, rifle, colouring pencils, blanket
Special Effects: Smoke
Vehicles: Car
Wardrobe: Coat
Makeup: Tired makeup
Set Dressing: vehicle, radar dishes

DEPT	NAME	IN	DEPT	NAME	IN
PRODUCTION			ART DEPT		
Producer	-	8:00	Senior Art Director	-	8:00
Director	-	8:00	Senior Set Designer	-	8:00
Production Manager	-	8:00	Set Decorator	-	8:00
Line Producer	-	8:00	Location Set Decorator	-	8:00
Runner	-	8:00	Assistant Set Decorator	-	8:00
Runner	-	8:00	Prop Master	-	8:00

Runner	-	8:00	HAIR/MAKEUP/WARDROBE		
AD'S			Hair stylist	-	8:00
1st Assistant Director	-	8:00	Makeup Artist	-	8:00
CAMERA DEPT			SFX Makeup	-	8:00
Director of Photography	-	8:00	Touch up artist	-	8:00
1st Assistant Camera	-	8:00	Wardrobe Supervisor	-	8:00
Camera Operator	-	8:00	Costume Designer	-	8:00
Fixer	-	8:00	CONTINUITY		
Fixer	-	8:00	Script Editor	-	8:00
GRIP & ELECTRIC DEPT			SOUND		
Lighting Technician	-	8:00	Production Sound Mixer	-	8:00
Best Boy	-	8:00	Boom Operator	-	8:00
Gaffer	-	8:00	1st Assistant Sound	-	8:00
Gaffer	-	8:00	Boom Operator	-	8:00
Rigger	-	8:00	1st Assistant Sound	-	8:00
Rigger	-	8:00			
Logger	-	8:00			
DIT	-	8:00			
Grip	-	8:00			

Producer: - Director: - Production Manager: - Production Coordinator: - 1st Assistant Director: -	<h1>Sci-Fi</h1>	DATE: Monday July SHUTTLE INFO: Crew Pick Up at 19:00
WEATHER: First Aid kit and fire extinguisher at the craft table.	<h2>CALL TIME</h2> <h1>20:00</h1> <p>Check grid for individual call times</p>	<h2>DINNER</h2> <h1>00:30</h1>

Crew Hotel	Nearest Hospital to Set
Premier Inn Stanborough Road, Welwyn Garden City, AL8 6DQ	Hertford County Hospital, North Road, Hertford, Sg14 1LP

LOCATIONS					
#	Location	Address	Parking	Contact	
1	Rickney's Quarry	Hertford SG12 0HD	Crouchfields Car Park SG12 0PS	Name: - C: ###	
Scene and Description			Cast	Pgs	Loc
Scene 10			N/A	2 & 4	Valley Road

Transportation
Coach Pick up 19:00
Catering
Cast/Crew Dinner x 50 hot and ready @ 00:30

SET REQUIREMENTS
Props: Car
Vehicles: Car
Set Dressing: Car

DEPT	NAME	IN	DEPT	NAME	IN
PRODUCTION			ART DEPT		
Producer	-	20:00	Senior Set Designer	-	20:00
Director	-	20:00	Set Decorator	-	20:00
Production Manager	-	20:00	Location Set Decorator	-	20:00
Line Producer	-	20:00	Assistant Set Decorator	-	20:00
Location Manager	-	20:00	Prop Master	-	20:00
Production Assistant	-	20:00	HAIR/MAKEUP/WARDROBE		
Runner	-	20:00	Hair stylist	-	20:00
Runner	-	20:00	Makeup Artist	-	20:00
Runner	-	20:00	Touch up artist	-	20:00
AD'S			Wardrobe Supervisor	-	20:00
1st Assistant Director	-	20:00	Touch up artist	-	20:00
CAMERA DEPT			CONTINUITY		
Director of Photography	-	20:00	Script Editor	-	20:00
1st Assistant Camera	-	20:00	SOUND		
Camera Operator	-	20:00	Production Sound Mixer	-	20:00
Fixer	-	20:00	Boom Operator	-	20:00
GRIP & ELECTRIC DEPT			1st Assistant Sound	-	20:00
Lighting Technician	-	20:00	Boom Operator	-	20:00

Best Boy	-	20:00	LOGISTICS		
Gaffer	-	20:00	Security	-	20:00
Gaffer	-	20:00	Security	-	20:00
Focus Puller	-	20:00	Security	-	20:00
Electrician	-	20:00	Medic	-	20:00
Clapper Loader	-	20:00	Health and Safety Supervisor	-	20:00
Rigger	-	20:00	Health and Safety Supervisor	-	20:00
Logger	-	20:00	Health and Safety Supervisor	-	20:00
DIT	-	20:00	Health and Safety Supervisor	-	20:00
Grip	-	20:00	Health and Safety Supervisor	-	20:00
Steadicam Operator	-	20:00	Driver	-	20:00

Producer: - Director: - Production Manager: - Production Coordinator: - 1 st Assistant Director: -	<h1>Sci-Fi</h1>	DATE: Monday July SHUTTLE INFO: HOTEL PICK UP 07:15
WEATHER: First Aid kit and fire extinguisher at the craft table.	<h1>CALL TIME</h1> <h1>08:00</h1> Check grid for individual call times	<h1>LUNCH</h1> <h1>12:00</h1>

Crew Hotel	Nearest Hospital to Set
Hemel Hempstead Premier Inn, Moor End Road, Hemel Hempstead, HP2 4FW	Watford General Hospital, Vicarage Road, Watford, Wd18 0HB

LOCATIONS					
#	Location	Address	Parking	Contact	
1	Frogmore Paper Mill	Fourdrinier Way, Apsley, HP3 9RY	Museum Car Park Frogmore Paper Mill	Name: - C: ###	
Scene and Description			Cast	Pgs	Loc
Scene 18			David	11	Hatchwell
Scene 24			David	19	Hatchwell
Scene 20			David	11 & 12	Bunker

#	Cast	Role	Call Time	Pick Up Time	MU/WD	Set Call
1.	-	David	8:00	7:45	8:15	9:00

Transportation	
Coach pick up from hotel for and cast 7:15, Car pick up cast from hotel at 7:15	
Catering	
Cast/Crew Breakfast	x 60 to be hot and ready @ 7:30
Catering	
Cast/Crew Lunch	x 60 to be Hot & Ready @ 12:30

SET REQUIREMENTS	
Props: Computers, head torch, rations	
Special Effects: small fired	
Makeup: Tired makeup	
Set Dressing: Emergency Lights, control room, ladder	

DEPT	NAME	IN	DEPT	NAME	IN
PRODUCTION			ART DEPT		
Producer	-	8:00	Senior Art Director	-	8:00
Director	-	8:00	Senior Set Designer	-	8:00
Production Manager	-	8:00	Set Decorator	-	8:00
Line Producer	-	8:00	Location Set Decorator	-	8:00
Runner	-	8:00	Assistant Set Decorator	-	8:00
Runner	-	8:00	Prop Master	-	8:00
Runner	-	8:00	HAIR/MAKEUP/WARDROBE		
AD'S			Hair stylist	-	8:00
1 st Assistant Director	-	8:00	Makeup Artist	-	8:00

CAMERA DEPT			SFX Makeup	-	8:00
Director of Photography	-	8:00	Touch up artist	-	8:00
1st Assistant Camera	-	8:00	Wardrobe Supervisor	-	8:00
Camera Operator	-	8:00	Costume Designer	-	8:00
Fixer	-	8:00	CONTINUITY		
Fixer	-	8:00	Script Editor	-	8:00
GRIP & ELECTRIC DEPT			SOUND		
Lighting Technician	-	8:00	Production Sound Mixer	-	8:00
Best Boy	-	8:00	Boom Operator	-	8:00
Gaffer	-	8:00	1st Assistant Sound	-	8:00
Gaffer	-	8:00	Boom Operator	-	8:00
Rigger	-	8:00	1st Assistant Sound	-	8:00
Rigger	-	8:00			
Logger	-	8:00			
DIT	-	8:00			
Grip	-	8:00			

